

Exam Questions HPE6-A70

Implementing Aruba WLAN (IAW) 8.4

<https://www.2passeasy.com/dumps/HPE6-A70/>



NEW QUESTION 1

An Aruba solution has a WLAN that uses WPA2-Enterprise security. How are encryption keys dynamically managed for the wireless users?

- A. The MM generates and distributes keys to clients and access points (APs).
- B. Administrators configure identical key strings on the Mobility Controllers (MCs) and wireless client 802.1X settings.
- C. Keys are generated and distributed securely during each wireless user authentication process.
- D. Keys are derived from the preshared key configured on the WLAN and on each wireless client.

Answer: C

NEW QUESTION 2

What is a requirement for the Dashboard > Traffic Analysis window on the Aruba Mobility Master (MM) to show data?

- A. Airmatch and ClientMatch must be enabled.
- B. The solution must have active PEFNG licenses.
- C. Firewall policies must include application filtering rules.
- D. WLANs must use the decrypt-tunnel forwarding option.

Answer: B

NEW QUESTION 3

A company has a Mobility Master (MM)-based solution. How does a Mobility Controller (MC) behave if it loses contact with all MM nodes?

- A. The MC loses all licenses and cannot support APs or clients.
- B. The MC retains its current licenses for 30 days.
- C. The MC contacts Aruba Activate and uses the licensing limits defined there.
- D. The MC maintains only licenses that have been locally installed on it.

Answer: B

NEW QUESTION 4

A network administrator wants to use unique digital certificates installed on user devices to authenticate wireless users. Which EAP method should the RADIUS server and clients support?

- A. PEAP and MS-CHAPv2
- B. EAP-TLS
- C. EAP-TTLS and MS-CHAPv2
- D. LEAP

Answer: B

NEW QUESTION 5

Refer to the exhibit.



A network administrator adds a global rule in the area shown in the exhibit. Where does the global rule take effect?

- A. It immediately applies only to the guest role, as part of the final policy applied to the role. Administrators cannot apply the rule to other roles.
- B. It immediately applies to the guest role and other roles, as part of the first policy applied to the role.
- C. It immediately applies to the guest role and other roles, as part of the final policy applied to the role.
- D. It immediately applies only to the guest role and other roles, as part of the first policy applied to the role. Administrators can choose to apply the rule to other roles.

Answer: D

NEW QUESTION 6

Refer to the exhibits.
 Exhibit 1

Exam_Guest

General

VLANs

Security


Access

VLAN:

guest

Hide VLAN details

Named VLANs

NAME	ID(S)	
employee	51	
guest	99	
..	1,55	

+

VLAN IDs

ID	IPV4 ADDRE...	IPV6 ADDRE...	ENABLE NAT	PORT MEM...	ADMIN STATE	OPERATION...	DHCP SETT...
99	Enabled	..	Enabled	N/A	None

Exhibit 2

Exam_Guest

General

VLANs

Security

Access

Clearpass or other external captive portal

Internal captive portal with authentication

Internal captive portal with authentication

Internal captive portal with authentication

A network administrator configures a guest WLAN on an Aruba Mobility Master (MM)-based solution. The exhibits show some of the settings for this WLAN.

Which settings must the administrator configure on each Mobility Controller (MC) at the device level for this configuration to function properly?

- A. an IPsec preshared key
- B. CPsec certificates
- C. a portal page
- D. VLAN 99 IP settings

Answer: D

NEW QUESTION 7

Which deployment option for Aruba Controllers is new to ArubaOS 8?

- A. deployment as virtual appliances
B. deployment in standalone mode
C. deployment in master-local mode
D. deployment as branch office controller

Answer: A

NEW QUESTION 8

A company has an Aruba Mobility Master (MM)-based solution. A network administrator wants to collect and analyze information about clients and access points (APs) over extended periods of time.

What should the administrator do to achieve this goal?

- A. Add Aruba AirWave to the solution.
- B. Run a Traffic Analysis report on the MM.
- C. Make sure that MM has sufficient AppRF licenses.
- D. Enable archival from the MM interface Maintenance windows.

Answer: A

NEW QUESTION 9

Which type of authentication server should administrators select to authenticate users to a ClearPass server?

- A. Windows
B. RADIUS
C. TACACS+
D. LDAP

Answer: B

NEW QUESTION 10

Refer to the exhibits.

Exhibit 1

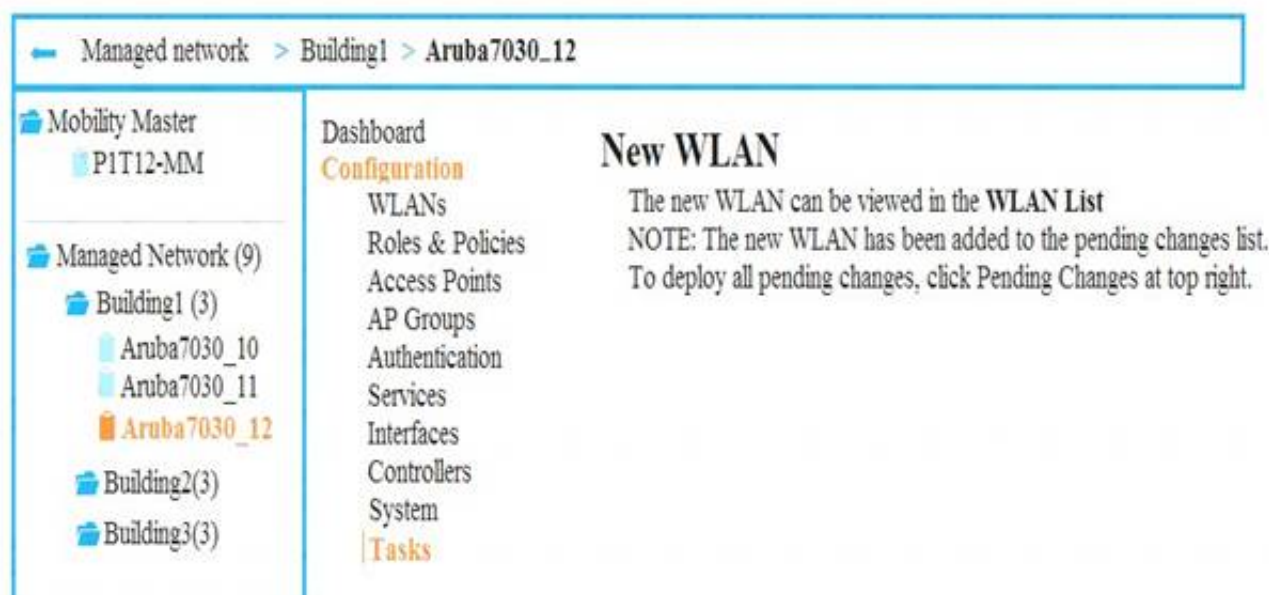
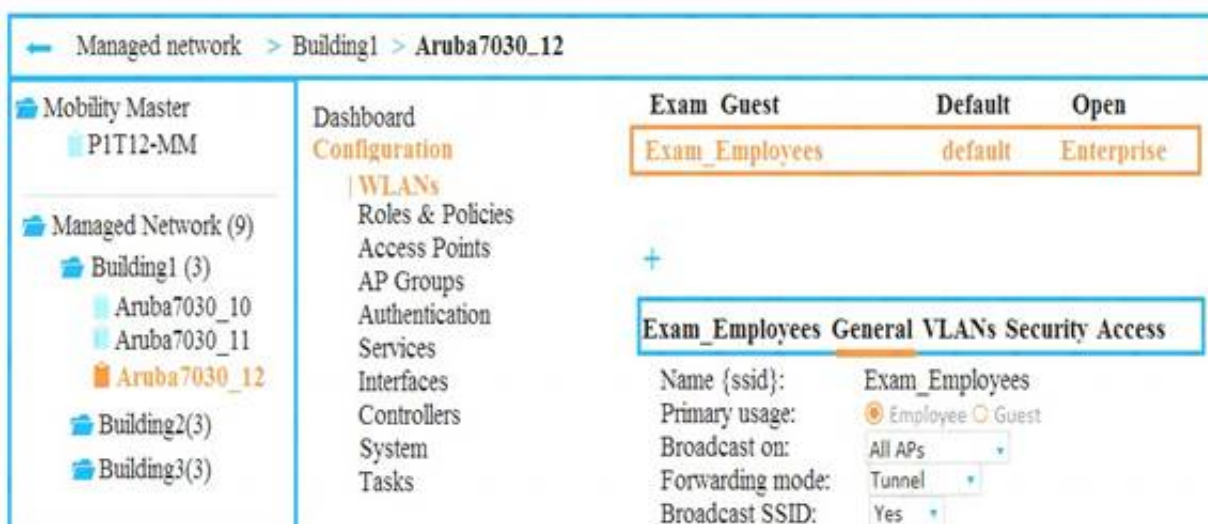


Exhibit 2



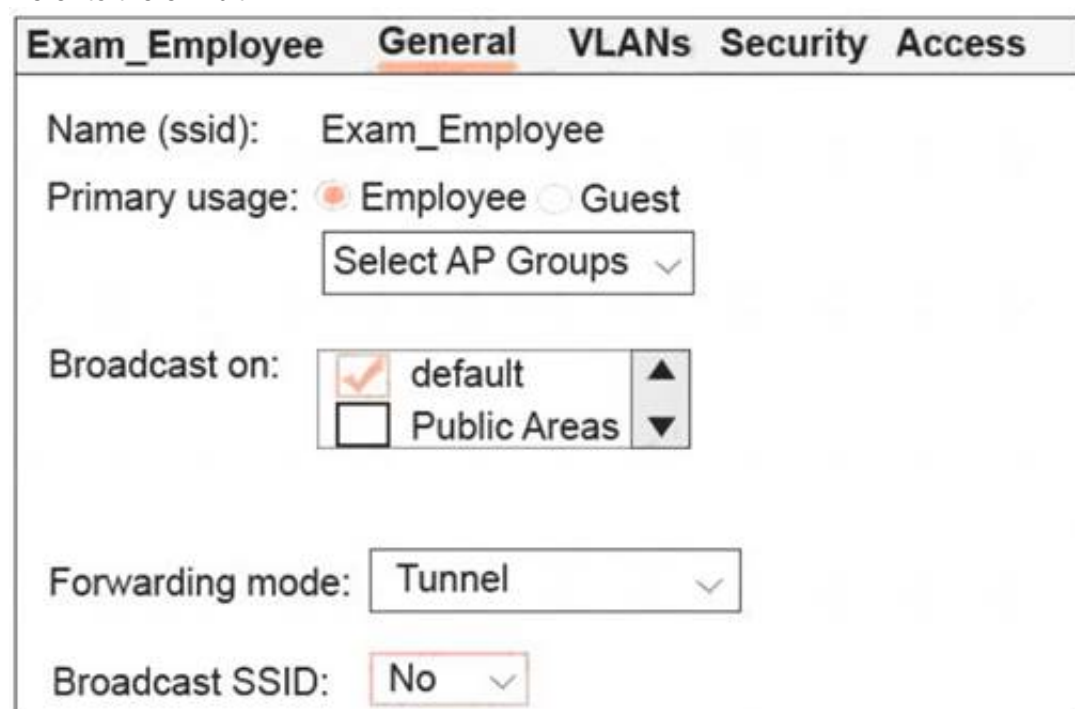
A company has an Aruba Mobility Master (MM)-based solution and needs a new WLAN for the corporate campus. A network administrator completes the creation of this WLAN, as shown in Exhibit 1. When the administrator tries to test a connection to the WLAN in various locations, the WLAN sometimes shows up in the list of WLANs on the client but sometimes does not. The administrator can see the WLAN in the list, as shown in Exhibit 2. What is the error?

- A. The Mobility Master (MM) does not have an active PEFNG license.
- B. The WLAN is configured as a hidden SSID.
- C. The configuration is not deployed to the Mobility Controller (MC).
- D. The WLAN is configured at a lower level in the Managed Network hierarchy.

Answer: D

NEW QUESTION 10

Refer to the exhibit.



What describes the behavior for this WLAN?

- A. APs in the default group broadcast the SSI
- B. Clients can connect to the WLAN on APs in the default group only.
- C. No APs broadcast the SSI
- D. Clients cannot connect to the WLAN until administrators activate it.

- E. No APs broadcast the SSI
- F. Clients can connect to the WLAN on APs in the default group only.
- G. APs in the default group broadcast the SSI
- H. Clients can connect to the WLAN on APs in any group.

Answer: C

NEW QUESTION 14

What is one difference between an Aruba firewall access control rule and an application rule?

- A. An application rule cannot use the packet source and destination IP addresses as part of its match criteria.
- B. An access rule can filter non-IP traffic, as well as IPv4 and IPv6 traffic.
- C. An access rule cannot apply different actions to different types of traffic sent to the same destination.
- D. An application rule can filter traffic at a higher layer beyond the TCP or UDP port.

Answer: D

NEW QUESTION 15

An AP operates on channel 6. Which device causes the most significant and consistent interference with the signal?

- A. cellular phone
- B. weather radar
- C. wireless security camera operating on channel 8
- D. AP operating on channel 11

Answer: C

NEW QUESTION 20

An Aruba solution runs ArubaOS 8 and uses a standalone controller architecture. Which feature can administrators use to optimize the channel and power plan for the APs?

- A. ARM
- B. Rule Based Client Match
- C. AirMatch
- D. AppRF

Answer: A

NEW QUESTION 24

Refer to the exhibits.

Exhibit 1

AAA Profile: Exam_Employees	
AAA Profile:	Exam_Employees ▾
Initial role:	logon ▾
MAC Authentication Default Role:	guest ▾
802.1X Authentication Default Role:	guest ▾
Download Role from CPPM:	<input type="checkbox"/>
Set username from dhcp option 12:	<input type="checkbox"/>
L2 Authentication Fail Through:	<input type="checkbox"/>
Multiple Server Accounting:	<input type="checkbox"/>
User Idle timeout:	<input type="text"/> seconds
Max IPv4 for Wireless user:	2 <input type="text"/>
RADIUS Interim Accounting:	<input type="checkbox"/>

Exhibit 2

Clients(1) Default Columns ▾ ▲								
Client ▾	Health(%) ▾	IP Address ▾	Bond ▾	Radio PHY ▾	Client PHY ▾	Device ▾	Role ▾	Forward Mode ▾
employee	48	10.1.51.150	2.4 GHz	HT 2D MHz	HT 2D MHz	Unknown	guest	Tunnel

An Aruba solution supports a WLAN that uses WPA2-Enterprise security. Exhibit 1 shows the AAA policy for the WLAN. Users are supposed to be assigned to different roles after authentication. Network administrators test a connection with the employee user account. Exhibit 2 shows the status for the client after this test. What is a possible reason for the issue shown in Exhibit 2?

- A. The shared key configured for the ClearPass server is incorrect.
- B. The RADIUS server is not correctly set up to send a user role for the employee account.
- C. MAC authentication is enabled on the WLAN, and the test device does not have an authorized address.
- D. The administrators entered the wrong password for the employee account.

Answer: B

NEW QUESTION 25

Which class of controller is more appropriate in a branch installation with up to 64 APs?

- A. A.-7008B.7030C.7205D.7210

Answer: B

NEW QUESTION 27

Which Mobility Master (MM) dashboard should an administrator access to view a list of rogue and interfering APs?

- A. Potential issues
- B. Security
- C. Performance
- D. Network

Answer: B

NEW QUESTION 32

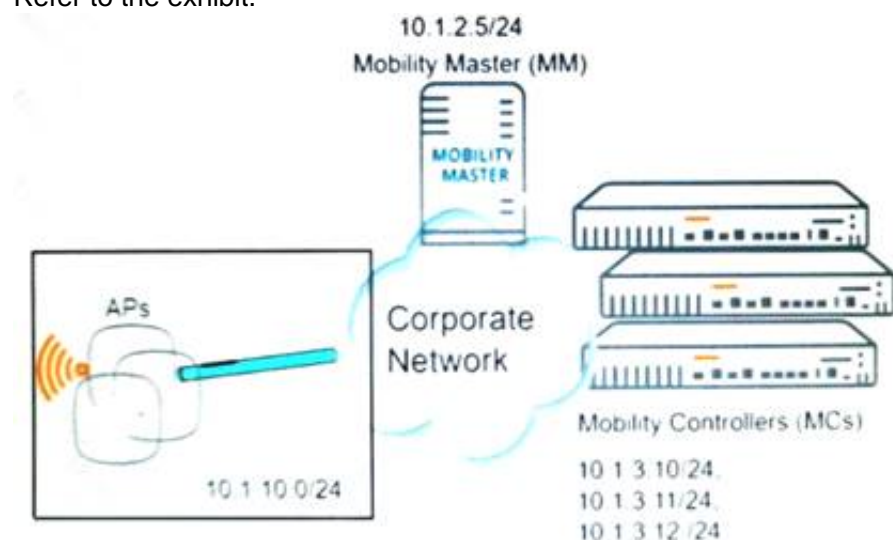
A company has a Mobility Master (MM)-based solution. A network administrator wants to monitor data transfer speed ranges of all currently connected clients. Which dashboard page in the MM interface should the administrator visit?

- A. Security
- B. Performance
- C. Traffic Analysis
- D. Network

Answer: C

NEW QUESTION 35

Refer to the exhibit.



What is a valid way to help the APs discover devices that can control them?

- A. Set up an Aruba Central subscription, and ensure that APs can reach the Internet.
- B. Enable CPSec, and ensure the Mobility Master (MM) and Mobility Controllers (MCs) trust the Aruba certificates installed on the APs at the factory.
- C. Specify the Mobility Master (MM) IP address in DHCP option 43 on the network DHCP server.
- D. Map the Mobility Controller (MC) IP addresses to the aruba-master name on the network DNS server.

Answer: D

NEW QUESTION 36

A network administrator creates a user account on an Aruba Mobility Master (MM) with the guest-provisioning role. Which task does this user have the rights to

perform?

- A. set up portal pages
- B. create guest user accounts
- C. monitor guest clients
- D. create guest WLANs

Answer: B

NEW QUESTION 37

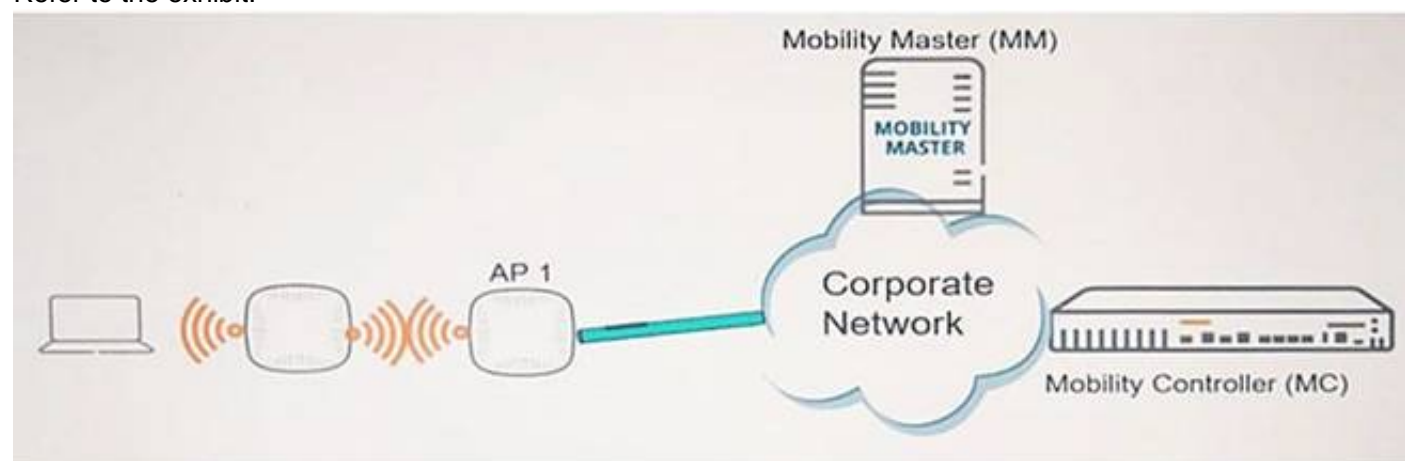
What is a role fulfilled by an Aruba Mobility Master (MM)?

- A. It forwards and routes traffic for wireless users across multiple sites.
- B. It terminates control tunnels for Aruba APs.
- C. It provides an advanced Web portal for onboarding Bring Your Own Device (BYOD) devices.
- D. It manages VLAN and routing configuration for multiple Mobility Controllers (MCs).

Answer: D

NEW QUESTION 38

Refer to the exhibit.



Which role must AP 1 play?

- A. Remote AP (RAP)
- B. Mesh Portal AP
- C. Instant AP (IAP)
- D. Mesh Point AP

Answer: B

NEW QUESTION 42

Refer to the exhibit.

Exam_Employee	General	VLANs	Security	Access
<p>Default role: <input type="text" value="guest"/></p> <p>Server-derived roles: <input checked="" type="checkbox"/></p> <p>Derivation method: <input checked="" type="radio"/> Use value returned from Clearpass or other auth server <input type="radio"/> Use rules defined in table below</p> <p>Show roles</p>				

A network administrator sets up the Exam_Employees WLAN on an Aruba solution with a default role of guest, as shown in the exhibit. To which users does the guest role apply?

- A. users who successfully authenticate and are assigned to the default role by the RADIUS server
- B. users who successfully authenticate and are not assigned a different role by the RADIUS server
- C. users who have connected to the SSID, but have not yet attempted authentication
- D. users who fail authentication

Answer: B

NEW QUESTION 46

What is one networking setting that a network administrator can configure for roles in an Aruba solution?

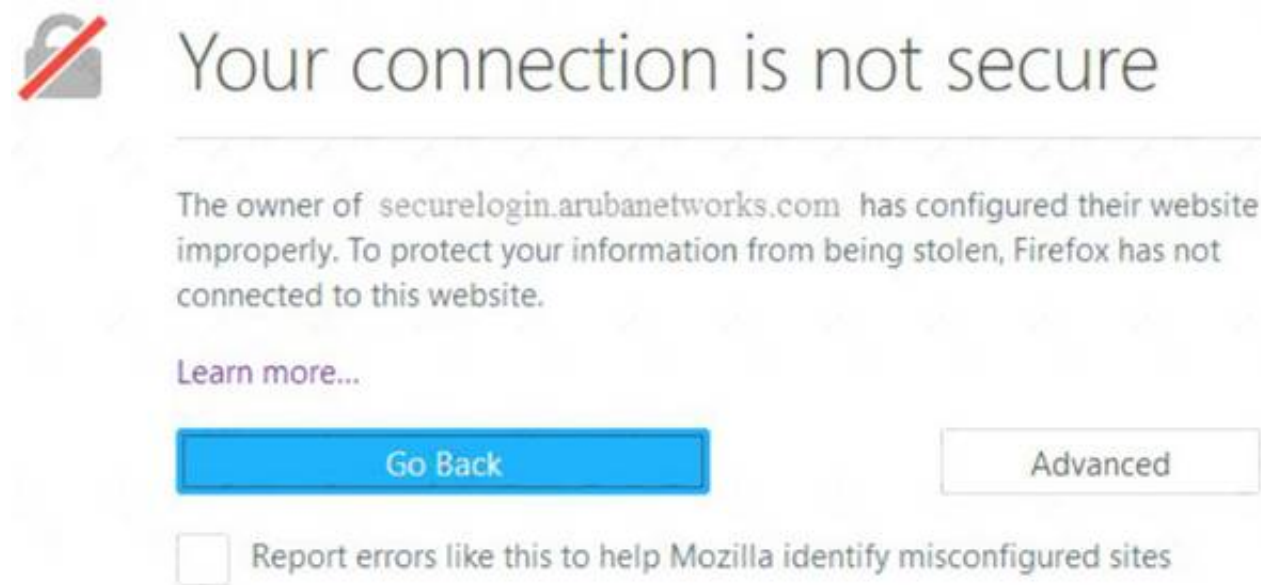
- A. DHCP pool
- B. ClientMatch rules
- C. source NAT

D. bandwidth limit

Answer: D

NEW QUESTION 47

Refer to the exhibit.



A company has a Mobility Master (MM)-based solution with a guest WLAN. During the captive portal redirection, users who access a non-HTTPS Website see the error shown in the exhibit.

How can a network administrator prevent this error?

- A. Enable automatic CPSec certificate deployment.
- B. Replace the default Mobility Master certificate with a certificate that has the correct hostname.
- C. Replace the default server certificate for mobility controllers with a certificate signed by a trusted CA.
- D. Reconfigure the guest WLAN to use EAP methods that rely on passwords rather than certificates.

Answer: C

NEW QUESTION 48

An Aruba solution has a WLAN that uses WPA2-Personal security. How are encryption keys dynamically managed for the wireless users?

- A. The MM generates and distributes keys to clients and access points (APs).
- B. Administrators configure identical key strings on the Mobility Controllers (MCs) and wireless client 802.1X settings.
- C. Keys are generated and distributed securely during each wireless user authentication process.
- D. Keys are derived from the preshared key configured on the WLAN and on each wireless client.

Answer: D

NEW QUESTION 51

A network administrator examines a list of 2.4GHz clients with low performance in the Mobility Master (MM) dashboard. Which property for a client should pose a concern as a potential performance issue?

- A. Radio PHY of HT 20MHz
- B. Max speed of 72Mbps
- C. Goodput data rate of 12 Mbps
- D. Usage of 10 MB

Answer: D

NEW QUESTION 54

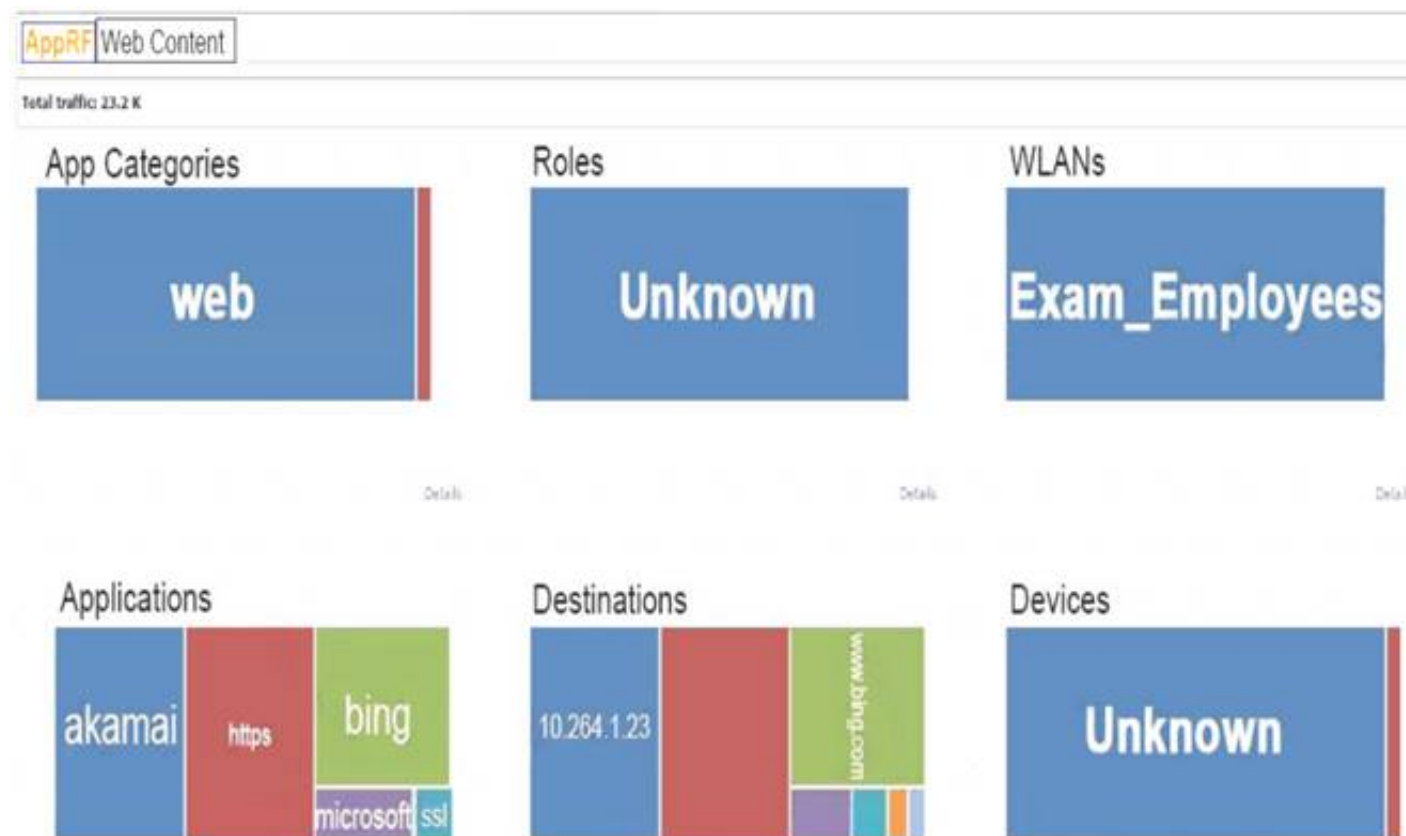
How does a high-gain omni-directional antenna compare to a typical omni-directional antenna?

- A. it provides more multi-user spatial streams.
- B. it provides more coverage in the horizontal direction than in the vertical direction.
- C. it provides more single-user spatial streams.
- D. it provides more coverage in both the horizontal and vertical directions.

Answer: B

NEW QUESTION 58

Refer to the exhibit.



The exhibit shows output from a Mobility Master (MM) dashboard. What is a valid reason for the administrator to click the akamai square under applications?

- A. to create filter rules in order to control wireless user access to this application
- B. to download a report about the usage of this application over time
- C. to see more details about this application, such as a list of aggregated sessions
- D. to see the break down for only roles, destinations, WLANs and devices that use this application

Answer: C

NEW QUESTION 60

A network administrator uses a wireless intrusion detection system (WIDS) to detect 802.11 association floods. At which layer do these attacks occur?

- A. Layer 1
- B. Layer 2
- C. Layer 3
- D. Layer 7

Answer: B

NEW QUESTION 62

Which task can an Aruba Air Monitor (AM) perform?

- A. Analyze wireless traffic patterns at the application level.
- B. Optimize RF through the AP channel and transmit power plans.
- C. Analyze RF signals to determine the cause of non-802.11 interference.
- D. Prevent client connections to rogue APs.

Answer: D

NEW QUESTION 63

A company has an Aruba solution that supports an employee WLAN. How can network administrators control in which subnets users receive IP addresses?

- A. Set the VLANs associated with desired subnets in the WLAN settings.
- B. Configure firewall policies that permit the desired subnet, and add them to the initial role for the WLAN.
- C. In the WLAN settings, configure User role rules with the desired subnet addresses as match criteria.
- D. Assign switch ports connected to APs to VLANs associated with the desired subnets.

Answer: A

NEW QUESTION 67

A network administrator creates the role employees and adds the rule to it: user any any permit

The first several wireless clients assigned to the employees role are assigned IP addresses in the 10.10.10.0/24 subnet. Several other wireless clients with the employees role are then assigned IP addresses in the 10.10.20.0/24.

When the Aruba firewall matches traffic from these clients to the user any any permit rule, what does it do?

- A. It drops traffic from wireless clients in both the 10.10.0/24 subnet and 10.10.20.0/24 subnet.
- B. It permits traffic from wireless clients in both the 10.10.10.0/24 and 10.10.20.0/24 subnet as long as the packet has a source IP.
- C. It permits the traffic from wireless clients in the 10.10.20.0/24 subnet, but drops the traffic from wireless clients in the 10.10.10.0/24 subnet.
- D. It permits the traffic from wireless clients in the 10.10.0/24 subnet, but drops the traffic from wireless clients in the 10.10.20.0/24 subnet.

Answer: B

NEW QUESTION 69

Which IEEE standard provides the highest transmission rates in the 5.0GHz frequency band?

- A. 802.11a
- B. 802.11ac
- C. 802.11g
- D. 802.11n

Answer: D

NEW QUESTION 71

How can network administrators upgrade AirMatch on an Aruba Mobility Master (MM)?

- A. Upgrade Client Match as part of a global software upgrade, and upgrade AirMatch separately as a loadable service module (LSM).
- B. Upgrade Client Match and AirMatch separately as loadable service modules (LSMs).
- C. Upgrade AirMatch and Client Match through a global software upgrade.
- D. Upgrade AirMatch as part of a global software upgrade, and upgrade Client Match separately as a loadable service module (LSM).

Answer: B

NEW QUESTION 73

A network administrator configures this policy:

```
ip access-list session Guest
  user any svc-dhcp permit
  user any network 10.0.0.0 255.0.0.0 deny
  user any any permit
```

Users to which this policy applies are unable to receive IP addresses with DHCP. How should the administrator fix the issue?

- A. Change user to any in the user any svc-dhcp permit rule.
- B. Move the user any svc-dhcp permit rule to the bottom of the list.
- C. Remove the deny rule from the policy.
- D. Use the correct service alias in the user any svc-dhcp permit rule.

Answer: D

NEW QUESTION 77

A network administrator wants to implement MAC filtering for the wireless network of a local financial firm to ensure that only employees can access the wireless network. What is a potential weakness of this solution?

- A. MAC filters cannot be applied with WPA2 encryption.
- B. Authorized MAC addresses are visible in plaintext in the air and can be easily spoofed.
- C. Many popular clients do not have the capability to connect to WLANs that use MAC filters.
- D. MAC filters offer no protection against authorized users who try to connect unauthorized devices.

Answer: B

NEW QUESTION 80

A company currently uses 802.11ac Wave 1 as a wireless solution. They want to upgrade to 802.11ac Wave2. Which new feature will now be available with this upgrade?

- A. band steering
- B. multiple spatial streams
- C. 40MHz channel bonding
- D. multi-user MIMO (MU-MIMO)

Answer: D

NEW QUESTION 82

Which task can an Aruba Air Monitor (AM) perform?

- A. Analyze wireless traffic patterns at the application level.
- B. Optimize RF through the AP channel and transmit power plans.
- C. Analyze RF signals to determine the cause of non-802.11 interference.
- D. Help to detect rogue APs in the environment.

Answer: D

NEW QUESTION 85

Which feature is unique to 802.11ac Wave 2 access points?

- A. band steering
- B. multiple spatial streams
- C. 40MHz channel bonding
- D. multi-user MIMO (MU-MIMO)

Answer: D

NEW QUESTION 88

A WLAN in an Aruba Mobility Master (MM)-based solution uses WPA2-Enterprise security. This WLAN currently authenticates users to Active Directory (AD), and users log in with their Windows domain credentials. Network administrators now want to authenticate the Windows clients as well, based on the client Computer Names.

What should the administrators do on MM to achieve this goal?

- A. Set up Machine Authentication on the WLAN.
- B. Set up Mac Authentication on the WLAN.
- C. Bind individual Mobility Controllers (MCs) to AD at the device level.
- D. Import the computer names from AD to the MM internal database.

Answer: A

NEW QUESTION 90

A network administrator examines a list of 2.4GHz clients with low performance in the Mobility Master (MM) dashboard. Which property for a client should pose a concern as a potential performance issue?

- A. Radio PHY of HT 20MHz
- B. Max speed of 72Mbps
- C. SNR of 18
- D. Usage of 10 MB

Answer: C

NEW QUESTION 91

A Mobility Controller (MC) runs ArubaOS 8. What is a valid reason for an administrator to set the MC to master-local mode?

- A. The company already has a partially hierarchical deployment based on the 6.x code and wants to keep the current architecture.
- B. The company needs to manage third-party network infrastructure devices with the use of the master controller interface.
- C. The company wants a deployment architecture that allows administrators to configure all MC settings from a single location.
- D. The company requires a centralized licensing architecture that provides global license pools.

Answer: A

NEW QUESTION 92

What is the difference between WPA and WPA2 encryption?

- A. WPA encryption uses symmetric keys, and WPA2 encryption uses asymmetric keys.
- B. WPA encryption acts at Layer 3, and WPA2 encryption acts at Layer 2.
- C. WPA encryption works only with preshared key (PSK) authentication, and WPA2 encryption works with both PSK and 802.1X.
- D. WPA encryption uses TKIP by default, and WPA2 encryption uses AES by default.

Answer: D

NEW QUESTION 96

.....

THANKS FOR TRYING THE DEMO OF OUR PRODUCT

Visit Our Site to Purchase the Full Set of Actual HPE6-A70 Exam Questions With Answers.

We Also Provide Practice Exam Software That Simulates Real Exam Environment And Has Many Self-Assessment Features. Order the HPE6-A70 Product From:

<https://www.2passeasy.com/dumps/HPE6-A70/>

Money Back Guarantee

HPE6-A70 Practice Exam Features:

- * HPE6-A70 Questions and Answers Updated Frequently
- * HPE6-A70 Practice Questions Verified by Expert Senior Certified Staff
- * HPE6-A70 Most Realistic Questions that Guarantee you a Pass on Your FirstTry
- * HPE6-A70 Practice Test Questions in Multiple Choice Formats and Updatesfor 1 Year