

## Exam Questions 98-365

Windows Server Administration Fundamentals

<https://www.2passeasy.com/dumps/98-365/>



### NEW QUESTION 1

To convert a disk from dynamic to basic, you must first:

- A. Mirror all disk volumes.
- B. Connect the disk to a different controller.
- C. Delete all disk volumes.
- D. Format all disk volumes in the NTFS file system.

**Answer:** C

#### Explanation:

To change a dynamic disk back to a basic disk using the Windows interface

? Back up all volumes on the disk you want to convert from dynamic to basic.

? In Disk Management, right-click each volume on the dynamic disk you want to convert to a basic disk, and then click Delete Volume for each volume on the disk.

? When all volumes on the disk have been deleted, right-click the disk, and then click Convert to Basic Disk.

### NEW QUESTION 2

#### HOTSPOT

For each of the following statements, select Yes if the statement is true. Otherwise, select No. Each correct selection is worth one point.

#### Answer Area

	Yes	No
A 32-bit client machine can use the 64-bit version of a printer driver.	<input type="radio"/>	<input type="radio"/>
A server can have multiple driver types installed for a single printer.	<input type="radio"/>	<input type="radio"/>
The print server must be 64-bit to support 64-bit and 32-bit clients.	<input type="radio"/>	<input type="radio"/>

- A. Mastered
- B. Not Mastered

**Answer:** A

#### Explanation:

#### Answer Area

	Yes	No
A 32-bit client machine can use the 64-bit version of a printer driver.	<input type="radio"/>	<input checked="" type="radio"/>
A server can have multiple driver types installed for a single printer.	<input checked="" type="radio"/>	<input type="radio"/>
The print server must be 64-bit to support 64-bit and 32-bit clients.	<input checked="" type="radio"/>	<input type="radio"/>

### NEW QUESTION 3

Which type of additional drivers does the Windows 7 installation phase prompt for?

- A. Video
- B. Network
- C. Use
- D. Storage

**Answer:** D

#### Explanation:

You might be prompted for the mass storage device driver. When installing Windows 7, you might see one of the following error messages:

\* No drives were found. Click Load Driver to provide a mass storage driver for installation.

\* Windows Setup could not configure Windows to run on this computer's hardware.

Reference: <http://windows.microsoft.com/en-us/windows7/windows-7-installation-problem-hard-drive-not-found>

### NEW QUESTION 4

This question requires that you evaluate the underlined text to determine if it is correct.

You install a new Windows Server 2008 R2 server for your school athletic department. The installation completes without errors. However, the new server is unable to communicate with the network. After checking cable connections and network configuration, you find that no network connections are listed in the Control Panel/Network Connections applet.

You should use "Device Manager" to investigate a potential problem with the network adapter driver.

Select the correct answer if the underlined text does not make the statement correct. Select "No change is needed" if the underlined text makes the statement

correct

- A. Network and Sharing Center
- B. Control Panel/Network Connections
- C. Server Manager/WMI Control
- D. No change is needed

**Answer:** D

**Explanation:**

The Device Manager is a Control Panel applet in Microsoft Windows operating systems. It allows users to view and control the hardware attached to the computer. When a piece of hardware is not working, the offending hardware is highlighted for the user to deal with.

Reference: [http://en.wikipedia.org/wiki/Device\\_Manager](http://en.wikipedia.org/wiki/Device_Manager)

**NEW QUESTION 5**

Plug and Play is a/an:

- A. Automatic device configuration system.
- B. Automatic system update application.
- C. Method used by developers to create applications.
- D. Multimedia device.

**Answer:** A

**NEW QUESTION 6**

You manage the servers for the School of Business at your university. The school has a Hyper-V server that runs three virtual machines (VMs). Each VM runs Windows Server 2008 R2.

You need to apply the latest Windows server updates to each of the VMs. You need to be able to revert the servers back to their original state before applying the updates.

Which Microsoft Virtualization feature should you use?

- A. Live Migration
- B. Snapshots
- C. VHD Virtual Hard Disks
- D. Failover Cluster

**Answer:** B

**Explanation:**

Snapshots provide a fast and easy way to revert the virtual machine to a previous state.

**NEW QUESTION 7**

What are two functions of the Group Policy loopback feature? (Choose two.)

- A. Apply Group Policy Objects for only the current site.
- B. Apply Group Policy Objects that depend only on the computer the user logs on to.
- C. Apply only the local computer Group Policy Object.
- D. Give higher precedence to computer policy over user policy.

**Answer:** BD

**Explanation:**

Loopback processing of Group Policy has two different modes, Replace and Merge.

\* (B) Replace mode replaces User Configuration with the one applied to the Computer.

\* (D) In Merge mode, if there is a conflict, for example two policies provide different values for the same configuration setting, the Computer's policy has more privilege compared to the user policy.

Reference: <http://kudratsapaev.blogspot.se/2009/07/loopback-processing-of-group-policy.html>

**NEW QUESTION 8**

Your backup plan calls for a full backup every Sunday. Every other day of the week, you need to back up only the changes since the last full backup.

Which backup type should you use for Tuesday?

- A. Daily
- B. Normal
- C. Copy
- D. Differential

**Answer:** D

**NEW QUESTION 9**

You need to limit what a service can access. You should change the service's:

- A. Dependencies
- B. Status
- C. Startup type
- D. Logon options

**Answer:**

D

**Explanation:**

Logon options include:

\* Log on as: No change

Use this setting to keep the service's logon credentials as previously configured.

\* Log on as: Local System account

Use this setting to change the service's logon credentials to the Local System account.

\* Log on as: This account

Use this setting to change the service's logon credentials to a specific local or domain user. This account and Password settings become available once you click this option.

**NEW QUESTION 10**

Which disk types can be used for internal storage?

A. SAN/iSCSI

B. NFS/Distributed File System (DFS)

C. PATA/SATA/SCSI

D. NAS/Fiber-channel

**Answer: C**

**NEW QUESTION 10**

An external storage unit that is self-contained and provides shared file-level access is referred to as:

A. Small Computer System Interface (SCSI).

B. Storage Area Network (SAN).

C. Network Attached Storage (NAS).

D. Direct Attached Storage (DAS).

**Answer: C**

**Explanation:**

Network-attached storage (NAS) is file-level computer data storage connected to a computer network providing data access to a heterogeneous group of clients. NAS not only operates as a file server, but is specialized for this task either by its hardware, software, or configuration of those elements. NAS is often manufactured as a computer appliance – a specialized computer built from the ground up for storing and serving files – rather than simply a general purpose computer being used for the role.

**NEW QUESTION 12**

This question requires that you evaluate the underlined text to determine if it is correct. The "Security" log in Event Viewer shows information regarding server reboots.

Select the correct answer if the underlined text does not make the statement correct. Select "No change is needed" if the underlined text makes the statement correct.

A. Application

B. Setup

C. System

D. No change is needed

**Answer: C**

**Explanation:**

System logs include system events such as server reboots.

**NEW QUESTION 15**

Running a system in safe mode:

A. protects the system from viruses.

B. protects the system from data loss.

C. loads a minimum number of drivers.

D. prevents unauthorized access.

**Answer: C**

**NEW QUESTION 16**

HOTSPOT

For each of the following statements, select Yes if the statement is true. Otherwise, select No. Each correct selection is worth one point.

Answer Area

	Yes	No
An organizational unit can only contain objects within its parent domain.	<input type="radio"/>	<input type="radio"/>
Two organizational units from different domains can share objects.	<input type="radio"/>	<input type="radio"/>
An organizational unit administrator requires domain administrator rights.	<input type="radio"/>	<input type="radio"/>

- A. Mastered
- B. Not Mastered

Answer: A

Explanation:

Answer Area

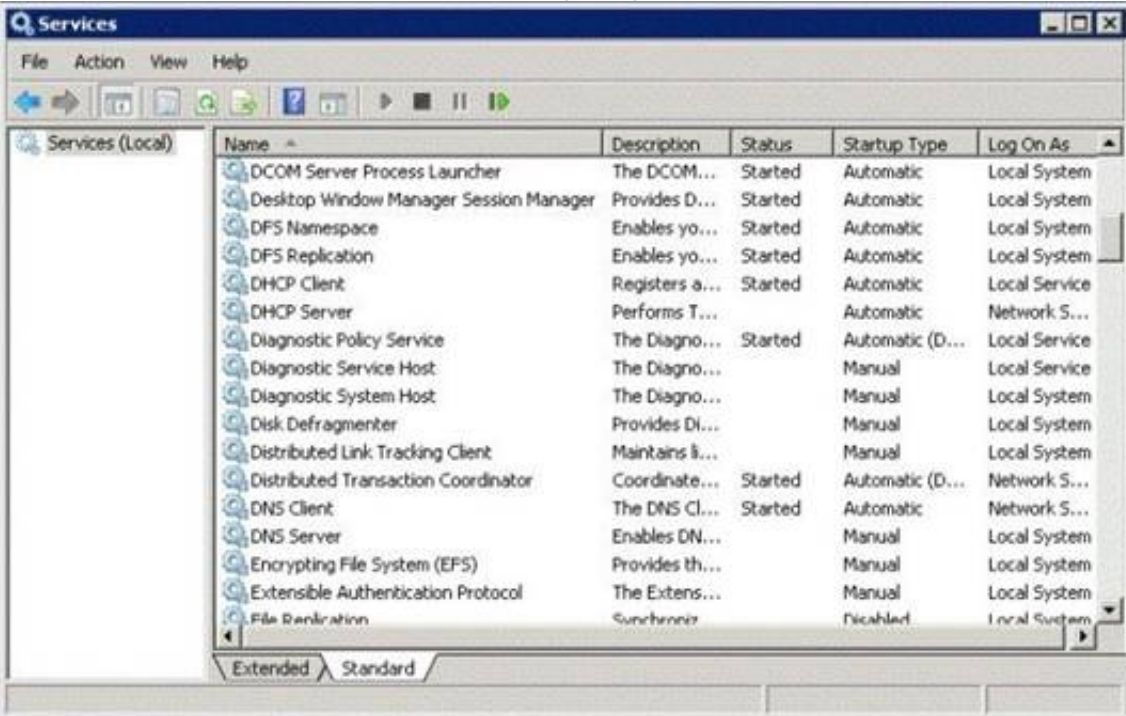
	Yes	No
An organizational unit can only contain objects within its parent domain.	<input checked="" type="radio"/>	<input type="radio"/>
Two organizational units from different domains can share objects.	<input type="radio"/>	<input checked="" type="radio"/>
An organizational unit administrator requires domain administrator rights.	<input type="radio"/>	<input checked="" type="radio"/>

NEW QUESTION 21

HOTSPOT

You restart the Windows Server 2008 R2 server for your computer lab. After the restart, a workstation cannot connect to any local network resource. Other workstations in the lab can connect to local network resources, but cannot browse the Internet.

The Services console is shown in the following image:



Use the drop-down menus to select the answer choice that completes each statement. Each correct selection is worth one point.

Answer Area

Changing the status of the DHCP Server service to [answer choice] allows the users to receive working IP addresses.

Setting the DNS Server service startup type to [answer choice] restores name resolution services when the server is rebooted.

Resume

Automatic

Started

Manual

Automatic

Started

- A. Mastered
- B. Not Mastered

Answer: A



**Explanation:**  
**Answer Area**

Changing the status of the DHCP Server service to **[answer choice]** allows the users to receive working IP addresses.

Setting the DNS Server service startup type to **[answer choice]** restores name resolution services when the server is rebooted.



**NEW QUESTION 22**

Which kind of group is only used for e-mail applications?

- A. Exchange Admins group
- B. Universal group
- C. Security group
- D. Distribution group

**Answer: D**

**Explanation:**

Example:

As an Office 365 Small Business admin, you can create and manage distribution groups for your organization. A distribution group is a collection of two or more people that appears in your organization's address book. When an email message is sent to a distribution group, it goes to all members of the group.

**NEW QUESTION 26**

Which task can you accomplish by using Organizational Units?

- A. Apply shared folder permissions to users
- B. Place different domains in a centralized manageable environment
- C. Create a secondary Active Directory
- D. Logically represent a hierarchical structure of your company

**Answer: D**

**Explanation:**

A particularly useful type of directory object contained within domains is the organizational unit. Organizational units are Active Directory containers into which you can place users, groups, computers, and other organizational units. An organizational unit cannot contain objects from other domains.

An organizational unit is the smallest scope or unit to which you can assign Group Policy settings or delegate administrative authority. Using organizational units, you can create containers within a domain that represent the hierarchical, logical structures within your organization.

**NEW QUESTION 29**

This question requires that you evaluate the underlined text to determine if it is correct. You need to troubleshoot network environment problems. First, you define the issues that

are most likely causing the symptoms. Then you eliminate each issue until the symptoms disappear.

This approach is referred to as "performance" troubleshooting.

Select the correct answer if the underlined text does not make the statement correct. Select "No change is needed" if the underlined text makes the statement correct.

- A. Systematic
- B. Specific
- C. Trial and error
- D. No change is needed

**Answer: A**

**Explanation:**

The ability to troubleshoot effectively reduces downtime and increases safety.

A Systematic approach brings efficiencies to the process of troubleshooting. Preparation

Step 1: Observe Behavior

Step 2: Define Problem Area Step 3: Identify Possible causes

Step 4: Determine Most Probable cause Step 5: Test and Repair

Follow-up

Reference: <http://www.troubleshootingskills.com/how-it-works/systematic-approach/>

**NEW QUESTION 32**

Services that are required to enable another service to run are referred to as service:

- A. Roots
- B. Prerequisites
- C. Dependencies
- D. Parents
- E. Hosts

**Answer: C**

**Explanation:**

Some services have dependency services that do not start until their dependency services start first.

**NEW QUESTION 33**

What is one advantage of application virtualization?

- A. Fewer operating system updates
- B. Improved collaboration
- C. Reduced network traffic
- D. Hardware consolidation

**Answer: B**

**Explanation:**

Some of the key benefits of Application Virtualization (App-V )include:

\* Flexible virtualization: Businesses can connect separately packaged App-V applications, enabling them to communicate with each other and with traditionally installed applications. This gives businesses the best of both worlds, providing isolation – reducing conflict and time spent regression testing – yet allowing applications to interact and communicate when needed.

\* An integrated platform

\* Powerful management of virtualized applications

\* Reference: <https://www.microsoft.com/en-us/windows/enterprise/products-and-technologies/mdop/app-v.aspx>

**NEW QUESTION 35**

This question requires that you evaluate the underlined text to determine if it is correct.

The minimum permission needed to delete other users' documents from a print queue is "Print".

Select the correct answer if the underlined text does not make the statement correct. Select 'No change is needed' if the underlined text makes the statement correct.

- A. Manage Documents
- B. Manage Printers
- C. Deny
- D. No change is needed

**Answer: A**

**Explanation:**

Manage documents. If you have this permission, you can manage all jobs for a printer that are waiting in the print queue, including documents or files that are being printed by other users.

Incorrect:

Not D: With print permissions you can only delete your own documents.

Reference: <http://windows.microsoft.com/en-us/windows-vista/what-are-printer-permissions>

**NEW QUESTION 39**

Which technology is designed to host calendars, contacts, and e-mail on the server?

- A. Microsoft Host Integration Server
- B. Microsoft Expression Studio
- C. Microsoft SQL Server
- D. Microsoft Exchange Server

**Answer: D**

**NEW QUESTION 40**

You need to make a share hidden. Which symbol should you append to the share name?

- A. \_
- B. !
- C. @
- D. #
- E. \$

**Answer: E**

**Explanation:**

The "\$" appended to the end of the share name means that it is a hidden share. Windows will not list such shares among those it defines in typical queries by remote clients to obtain the list of shares. One needs to know the name of an administrative share in order to access it. Not every hidden share is administrative share; in other words, ordinary hidden shares may be created at user's discretion.

**NEW QUESTION 43**

What is required to create a volume mount point?

- A. A dynamic disk
- B. RAID 1 implementation
- C. An NTFS file system volume or partition
- D. Extended volumes

**Answer: C**

**Explanation:**

A volume mount point can be placed in any empty folder of the host NTFS volume.

**NEW QUESTION 47**

You manage a Workgroup. You need to create a group for print administrators. Which type of group should you create?

- A. Domain Local group
- B. Local group
- C. Global group
- D. Universal group

**Answer:** B

**Explanation:**

Many organizations deploy Windows servers and workstations in workgroup configurations and for these organizations, local group policies can play a vital role in simplifying Windows system administration.

Read more at [http://tech.sportstoday.us/windows\\_server/windows-server-2008-r2---planning-workgroup-and-standalone-local-group-policy-configuration.aspx#iV1QJMxpiO0FVQyk.99](http://tech.sportstoday.us/windows_server/windows-server-2008-r2---planning-workgroup-and-standalone-local-group-policy-configuration.aspx#iV1QJMxpiO0FVQyk.99)

**NEW QUESTION 48**

You are an IT technician for a company that has an environment consisting entirely of Windows 2008 Server R2 and Windows 7 laptops. You need to establish a secure method that allows employees to work remotely but still have access to the internal network resources. What are two possible ways to achieve this goal? (Choose two.)

- A. Offline Files
- B. DirectAccess
- C. Network Access Protection (NAP)
- D. Virtual Private Network (VPN)
- E. DFS Namespace

**Answer:** BD

**Explanation:**

B: DirectAccess, also known as Unified Remote Access, is a VPN-like technology that provides intranet connectivity to client computers when they are connected to the Internet.

D: The remote users can get secure remote access through VPN.

Reference: <http://en.wikipedia.org/wiki/DirectAccess>

**NEW QUESTION 51****HOTSPOT**

For each of the following statements, select Yes if the statement is true. Otherwise, select No. Each correct selection is worth one point.

**Answer Area**

	Yes	No
A forest is a complete instance of Active Directory.	<input type="radio"/>	<input type="radio"/>
A leaf can have child objects.	<input type="radio"/>	<input type="radio"/>
A domain is a logical structure used for delegating authority over a collection of objects.	<input type="radio"/>	<input type="radio"/>

- A. Mastered
- B. Not Mastered

**Answer:** A

**Explanation:****Answer Area**

	Yes	No
A forest is a complete instance of Active Directory.	<input checked="" type="radio"/>	<input type="radio"/>
A leaf can have child objects.	<input type="radio"/>	<input checked="" type="radio"/>
A domain is a logical structure used for delegating authority over a collection of objects.	<input checked="" type="radio"/>	<input type="radio"/>



#### NEW QUESTION 54

To change the boot device order of a computer, you should use:

- A. Device Manager.
- B. Disk Management.
- C. BIOS settings.
- D. Computer Policy.

**Answer:** C

#### Explanation:

Example: Change the Boot Order in BIOS

Turn on or restart your computer and watch for a message during the POST about a particular key, usually Del or F2, that you'll need to press to ...enter SETUP.

Press this key as soon as you see the message.

Etc

#### NEW QUESTION 55

Which should you use to manage the working environments of users and computers in an Active Directory infrastructure?

- A. Active Directory Domains and Trusts
- B. Group Policy Objects
- C. Builtin containers
- D. Global security groups

**Answer:** B

#### Explanation:

A Group Policy Object (GPO) is a collection of settings that define what a system will look like and how it will behave for a defined group of users or computers.

#### NEW QUESTION 56

You are logged in as an administrator. You need to recover company documents created by a person who has left the company. You get an "Access Denied" message when you try to access the folder.

What is the first step you should take to access the documents?

- A. Disable inheritance
- B. Take ownership
- C. Enable sharing
- D. Remove the "Read-Only" Attribute
- E. Enable offline files

**Answer:** B

#### Explanation:

The owner of the object controls how permissions are set on the object and to whom permissions are granted.

The Take Ownership permission on an object or the Restore files and directories user right are the minimum requirements to complete this procedure. Review the details in "Additional considerations" in this topic.

To take ownership of a file or folder

? Open Windows Explorer, and then locate the file or folder you want to take ownership of.

? Right-click the file or folder, click Properties, and then click the Security tab.

? Click Advanced, and then click the Owner tab.

? Click Edit, and then do one of the following:

? (Optional) To change the owner of all subcontainers and objects within the tree, select the Replace owner on subcontainers and objects check box.

#### NEW QUESTION 61

Which tool should you use to track real-time system resource utilization?

- A. System Information
- B. Component Services
- C. Device Manager
- D. Perfmon

**Answer:** D

#### Explanation:

Example:

How to use Perfmon to collect Microsoft Windows performance counters

Open the WinX menu in Windows 8 and select Run. Type perfmon.exe and hit Enter to open the Performance Monitor. In the left pane, select the User Defined node, right-click on it and select New > Data Collector Set.

Etc.

#### NEW QUESTION 66

You need to secure a server that you have been working on without disrupting the work of other employees in your company. What should you do?

- A. Log off the server
- B. Hibernate the server
- C. Restart the server
- D. Shut down the server

**Answer:** A

#### NEW QUESTION 71

What is required for a computer to print to either a local or a network printer?

- A. 500 GB of free hard disk space
- B. Printer Device Drivers
- C. 1 GB of RAM
- D. Administration tools

**Answer:** B

#### NEW QUESTION 76

You need to centralize administration of print servers and network printers. What should you use?

- A. Print Management
- B. Printers and Faxes
- C. Device Manager
- D. Print queue

**Answer:** A

#### Explanation:

There are two primary tools that you can use to administer a Windows print server in Windows Server 2008: Server Manager and Print Management.

#### NEW QUESTION 77

You create a new domain. Which two Active Directory objects will be available by default? (Choose two)

- A. Computer
- B. Employee
- C. User
- D. Device
- E. Server

**Answer:** AC

#### Explanation:

An Active Directory structure is an arrangement of information about objects. The objects fall into two broad categories: resources (e.g., printers) and security principals (user or computer accounts and groups). Security principals are assigned unique security identifiers (SIDs).

Note:

\* Install-ADDSDomain

Installs a new Active Directory domain configuration.

#### NEW QUESTION 81

Which RAID level uses parity information to recover data from a failed disk?

- A. RAID 0
- B. RAID 1
- C. RAID 5
- D. RAID 10

**Answer:** :C

#### NEW QUESTION 85

A record of specific aspects of system performance over time is referred to as a/an:

- A. Threshold
- B. Log
- C. Event
- D. Alert

**Answer:** B

#### Explanation:

Working with Performance Logs

Applies To: Windows 7, Windows Server 2008 R2, Windows Server 2012, Windows Vista You can view log files or log data provided by a database in Performance Monitor to see a visual representation of performance data collected by Data Collector Sets.

#### NEW QUESTION 87

Which technology uses digital certificates for secure communications over the Internet?

- A. Fully Qualified Domain Name (FQDN)
- B. Internet Service Manager (ISM)
- C. Secure Sockets Layer (SSL)
- D. File Transfer Protocol (FTP)

Answer: C

#### NEW QUESTION 90

Which Hyper-V network type shares the host's physical network adapter?

- A. External
- B. Public
- C. Private
- D. Internal

Answer: A

#### Explanation:

For Hyper-V host networking, the most common option is to create an external access virtual switch. This allows VMs on the host to access other systems on a traditional VLAN or standard switched network.

#### NEW QUESTION 93

What is the default port for HTTPS?

- A. 21
- B. 80
- C. 135
- D. 443

Answer: D

#### Explanation:

43, TCP, Hypertext Transfer Protocol over TLS/SSL (HTTPS)

#### NEW QUESTION 97

##### HOTSPOT

For each of the following statements, select Yes if the statement is true. Otherwise, select No. Each correct selection is worth one point.

##### Answer Area

	Yes	No
A Windows Server 2008 R2 server that has an operations master role must also be a domain controller.	<input type="radio"/>	<input type="radio"/>
A single Windows Server 2008 R2 server may only be assigned a maximum of one operations master role.	<input type="radio"/>	<input type="radio"/>
Some operations master roles are assigned per domain, while others only need to be assigned to the forest.	<input type="radio"/>	<input type="radio"/>

- A. Mastered
- B. Not Mastered

Answer: A

#### Explanation:

##### Answer Area

	Yes	No
A Windows Server 2008 R2 server that has an operations master role must also be a domain controller.	<input checked="" type="radio"/>	<input type="radio"/>
A single Windows Server 2008 R2 server may only be assigned a maximum of one operations master role.	<input type="radio"/>	<input checked="" type="radio"/>
Some operations master roles are assigned per domain, while others only need to be assigned to the forest.	<input checked="" type="radio"/>	<input type="radio"/>

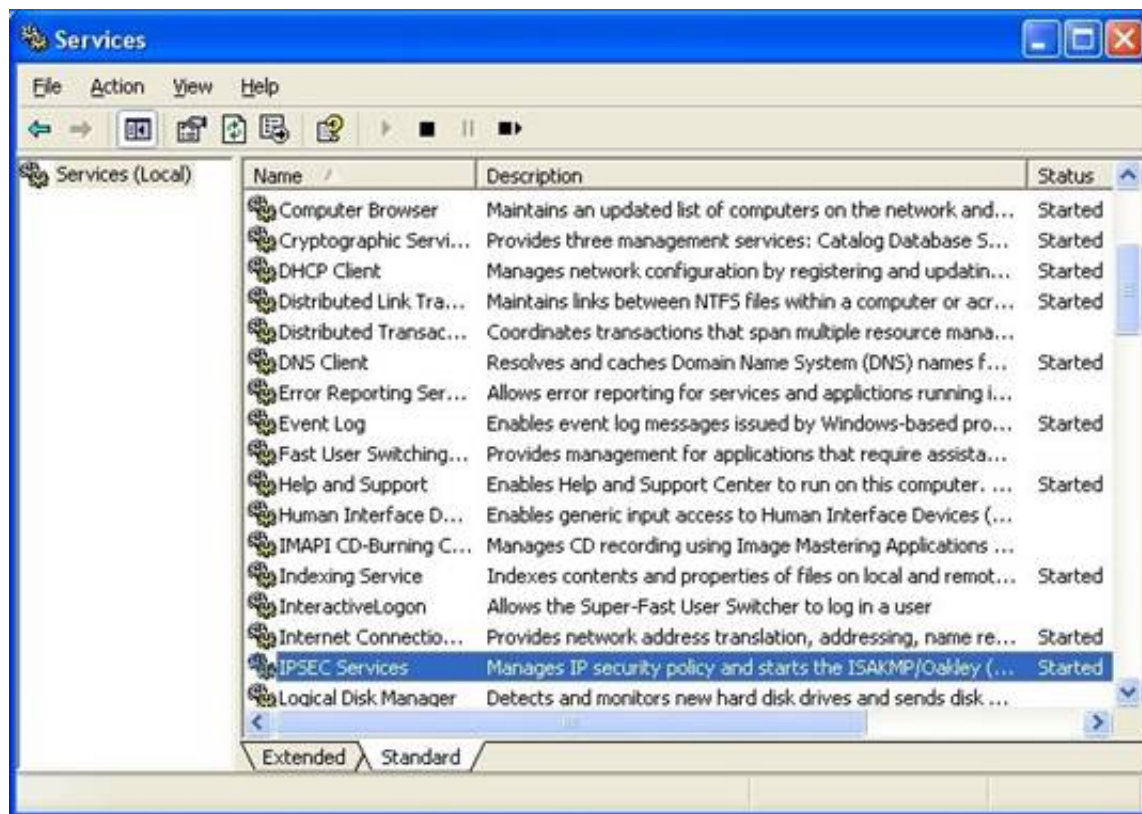
#### NEW QUESTION 98

You are using the Services Management Console. Which term is used to describe a service that is running?

- A. Started
- B. Activated
- C. Engaged
- D. Working

Answer: A

#### Explanation:



<http://www.ucs.cam.ac.uk/docs/leaflets/g53/vpn1.jpg>

#### NEW QUESTION 101

Which two specifications are included in Microsoft's hardware requirements for Windows Server? (Choose two)

- A. USB ports
- B. RAM
- C. Processor speed
- D. Disk I/O

**Answer:** BC

#### Explanation:

Example:

System Requirements for Windows Server 2012 Essentials

\* CPU socket

1.4 GHz (64-bit processor) or faster for single core

1.3 GHz (64-bit processor) or faster for multi-core

\* Memory (RAM) 2 GB

\* Hard disk

\* 160 GB hard disk with a 60 GB system partition

#### NEW QUESTION 105

.....

## THANKS FOR TRYING THE DEMO OF OUR PRODUCT

Visit Our Site to Purchase the Full Set of Actual 98-365 Exam Questions With Answers.

We Also Provide Practice Exam Software That Simulates Real Exam Environment And Has Many Self-Assessment Features. Order the 98-365 Product From:

<https://www.2passeasy.com/dumps/98-365/>

## Money Back Guarantee

### 98-365 Practice Exam Features:

- \* 98-365 Questions and Answers Updated Frequently
- \* 98-365 Practice Questions Verified by Expert Senior Certified Staff
- \* 98-365 Most Realistic Questions that Guarantee you a Pass on Your First Try
- \* 98-365 Practice Test Questions in Multiple Choice Formats and Updates for 1 Year