

# 352-001 Dumps

## CCDE Written Exam

<https://www.certleader.com/352-001-dumps.html>



**NEW QUESTION 1**

The cloud service provider CSP is planning to launch five data centers in Egypt, United Arab Emirates, Saudi Arabia, Qatar and Turkey. CSP is looking for VLAN extension and DCIs between these five data centers to allow for software replication, where original and backup VMs must be on the same subnet. Which tunneling technology must they use?

- A. VPLS
- B. IPsec VPN
- C. VPWS
- D. L2TPv3

**Answer:** A

**NEW QUESTION 2**

What is an implication of using route reflectors in an iBGP topology?

- A. Route reflection limits the total number of iBGP routers.
- B. Route reflection causes traffic to flow in a hub-and-spoke fashion.
- C. The manipulation of BGP attributes is not supported on the other routers than the route reflectors.
- D. Route reflectors can create routing loops when more than one router reflector is used in the same cluster.
- E. Multipath information is difficult to propagate in a route reflector topology.

**Answer:** E

**NEW QUESTION 3**

Which three options are important design functions of IPv6 first-hop security? (Choose three)

- A. It prevents rogue DHCP servers from assigning IPv6 addresses.
- B. It prevents IPv6 packets fragmentation.
- C. It limits IPv6 route advertisement in the network.
- D. It implements a broadcast-control mechanism.
- E. It suppresses excessive multicast neighbor discovery.
- F. It implements multihoming security.

**Answer:** ACE

**NEW QUESTION 4**

Which option lists the cloud service models?

- A. Internet as a Service, Platform as a Service, and Storage as a Service.
- B. Infrastructure as a Service, Platform as a Service, and Storage as a Service.
- C. Infrastructure as a Service, Platform as a Service, and Software as a Service.
- D. Internet as a Service, Product as a Service, and Storage as a Service.
- E. Internet as a Service, Platform as a Service, and Software as a Service.

**Answer:** C

**NEW QUESTION 5**

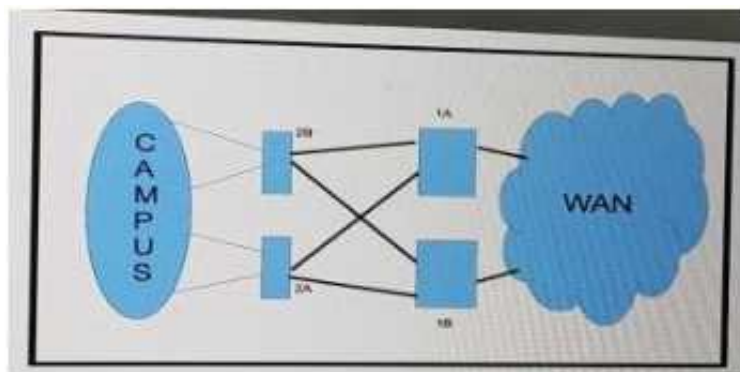
When you design a network that uses IPsec, where can you reduce MTU to avoid network fragmentation?

- A. on both ends of the TCP connection
- B. on the side closest to the client
- C. on the side closest to the server
- D. in the WAN

**Answer:** A

**NEW QUESTION 6**

Refer to the exhibit.



How should you redesign this network running BGP to improve availability of the routers 1A and 1B at the core site?

- A. Deploy BGP PIC
- B. Use link bundles over multiple slots
- C. Enable graceful restart
- D. Create a multichassis system with the two routers

**Answer:** A

#### NEW QUESTION 7

What is a design application of control plane policing?

- A. CPP protects the control plane from reconnaissance and or denial-of-service attacks
- B. CPP protects the forwarding plane by rate –limiting excessive routing protocol traffic
- C. CPP protects the forwarding plane by allowing legitimate traffic and dropping excessive traffic
- D. CPP drop malformed packet that are sent to the CPU

**Answer:** A

#### NEW QUESTION 8

A regional ISP is running MPLS TE. These tunnels are configured manually using paths. Which technology centralizes the traffic engineering decisions to reduce operational complexity?

- A. BGP Link State
- B. DiffServ-TE
- C. TE autobandwidth
- D. Shared Risk link Group

**Answer:** C

#### NEW QUESTION 9

In which two ways is a network design improved by including IP Event Dampening? (Choose two)

- A. Provides sub-second convergence
- B. Quickly detects network failures
- C. Prevent routing loops
- D. Improves network stability
- E. Reduces processing load

**Answer:** DE

#### NEW QUESTION 10

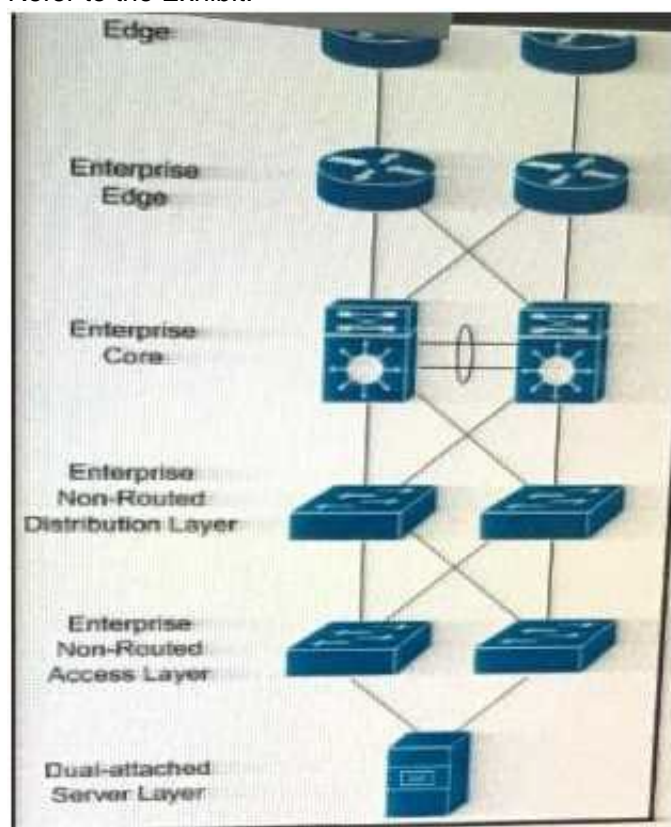
In a routed access hierarchical campus design, the access-to-distribution Layer 2 uplink trunks are replaced with Layer 3 point-to-point routed links. Why is it recommended that VLANs are confined on a single access switch rather than span across multiple access switches?

- A. to allow for better convergence time
- B. to prevent the occurrence of Layer 2 loops
- C. to allow for fault isolation
- D. to prevent routing black holes

**Answer:** D

#### NEW QUESTION 10

Refer to the Exhibit.



In which three Layers should you use nonstop Forwarding to reduce service impact in case of failure? (Choose three)

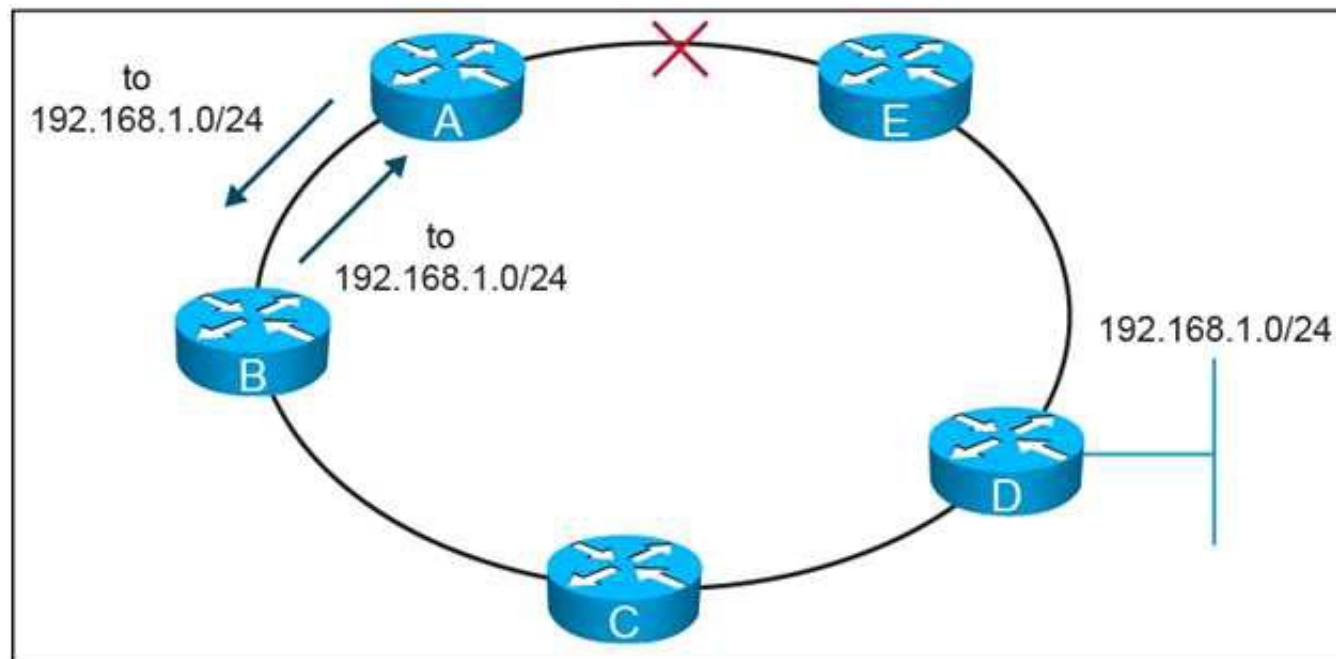
- A. Enterprise Edge
- B. Enterprise Core
- C. Service provider Edge
- D. Dual-attached sever Layer

- E. Enterprise Non-Routed Access Layer
- F. Enterprise Non-Routed Distribution Layer.

**Answer:** ABC

#### NEW QUESTION 11

Refer to the exhibit.



On this MPLS-based network ring, links have failed between router A and router E. These failures formed microloops while the network converged, when A forwarded traffic to B but B forwards it back to

- A. Which technology is the simplest solution to avoid microloops without enabling a new protocol in the network?
- B. TE Fast ReRoute
- C. IP Fast ReRoute
- D. Loop-Free Alternate
- E. Remote Loop-Free Alternate

**Answer:** D

#### NEW QUESTION 14

Which two techniques are used in an OSPF network design to slow down the distribution of topology information caused by a rapidly flapping link? (Choose two)

- A. LSA throttling
- B. SPF throttling
- C. IP event dampening
- D. Link-state incremental SPF
- E. Link-state partial SPF

**Answer:** AC

#### NEW QUESTION 19

Which option is a benefit of using N-Port Virtualization?

- A. reduces the amount of domain IDs that are used in the fabric
- B. does not need to create zoning
- C. reduces latency when using local switching on Fibre Channel ports
- D. allows trunking to the upstream switch
- E. does not need to configure the upstream switches

**Answer:** A

#### NEW QUESTION 21

A financial trading organization plans to monitor the network latency for multicast data feeds on a hop-by-hop basis. Which technology should be added to their design to support this requirement?

- A. SPAN
- B. NBAR
- C. IPFIX
- D. Precision Time Protocol

**Answer:** D

#### NEW QUESTION 26

Which two components are the responsibility of the customers in a platform as a Service offering? (Choose two)

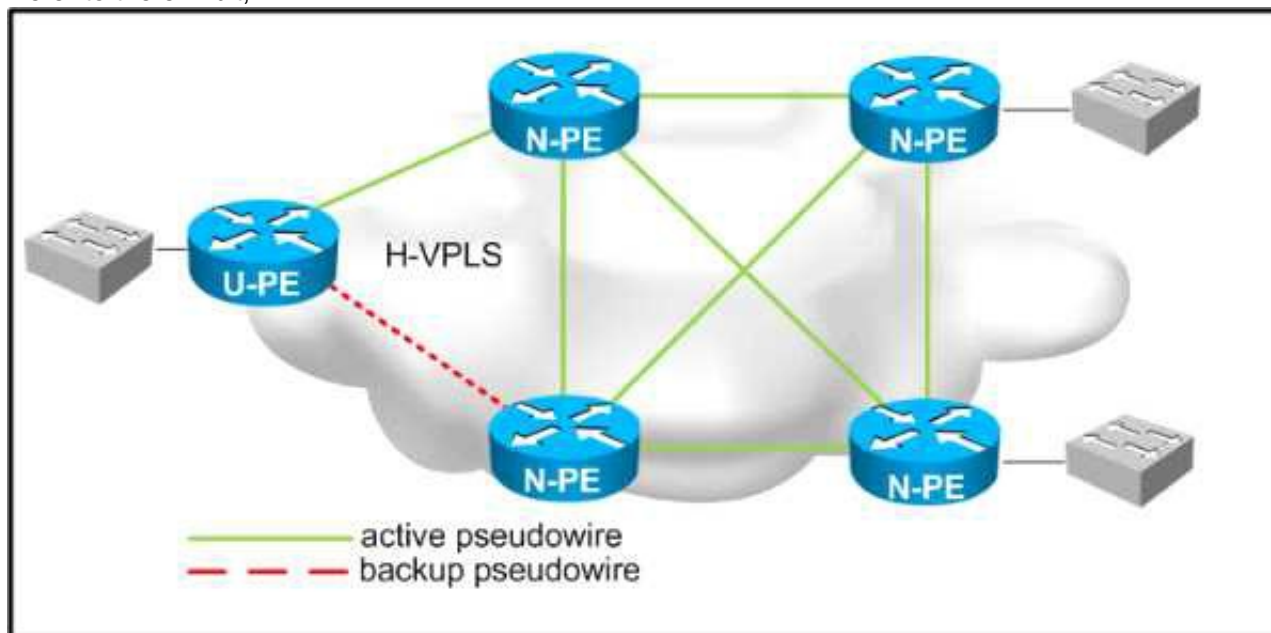
- A. Applications
- B. Infrastructure connectivity

- C. Hardware
- D. Data
- E. APIs

**Answer:** AD

#### NEW QUESTION 28

Refer to the exhibit,



Which two design considerations should be implemented on the pseudowire between N-PE and U-PE routers for a loop-free hierarchical VPLS service? (Choose two)

- A. Disable split horizon towards the U-PE router.
- B. Disable MAC learning on the U-PE router.
- C. Enable split horizon towards the N-PE routers.
- D. Disable MAC learning on the U-PE routers.
- E. Disable MAC learning on the U-PE routers.
- F. Enable split horizon towards the U-PE routers.
- G. Disable split horizon toward the N-PE routers.

**Answer:** AC

#### NEW QUESTION 29

How can a network designer reduce the amount of LSA flooding occurring in a large, single area fully-meshed OSPF topology?

- A. Implemented passive OSPF interfaces on the routers not participating on the DR/BDR election.
- B. Use access control lists to control outbound advertisements.
- C. Ensure DR and BDR routers are placed optimally in the topology.
- D. Place all point-to-point links in their own dedicated areas.

**Answer:** C

#### NEW QUESTION 33

Your customer asks you to assist with their traffic policy design. They want to guarantee a minimum amount of bandwidth to certain traffic classes. Which technique would you advise them to implement?

- A. Modular QoS CLI
- B. committed access Rate
- C. policy-based routing
- D. traffic shaping

**Answer:** A

#### NEW QUESTION 38

Which mechanism should be added to a network design to identify unidirectional Spanning Tree Protocol failures through BPDU loss?

- A. Root guard
- B. BPDU guard
- C. Loop guard
- D. UDLD

**Answer:** C

#### NEW QUESTION 43

Which multicast technology provides a large, many-to-many connectivity for a new application while minimizing load on the existing network infrastructure?

- A. PIM Sparse Mode
- B. Bidirectional PIM



- C. Any-Source Multicast
- D. Source Specific Multicast

**Answer:** B

#### NEW QUESTION 46

At which two networks points is route summarization supported? (Choose two)

- A. At EIGRP AS boundaries
- B. At EIGRP interface boundaries
- C. At OSPF virtual-link boundaries
- D. At EIGRP are boundaries
- E. At OSPF area boundaries
- F. At EIGRP stub interface boundaries

**Answer:** BE

#### NEW QUESTION 51

A Company has these requirements for access to their wireless and wired corporate LANs using 802.1x Clients devices that corporate assets and have joined the active directory domain are allowed access Personal devices must be not allowed access Clients and access servers must be mutually authenticated. Which solution meets these requirements?

- A. Protected EAP/Microsoft CHAP v2 with user authentication
- B. EAP-TLS with machine authentication
- C. EAP-TLS with user authentication
- D. Protected EAP/Microsoft CHAP v2 with Machine authentication

**Answer:** B

#### NEW QUESTION 52

You are consultant network designer for a large GET VPN deployment for a large bank with International coverage. Between 1800 and 2000 remote locations connect to the central location through four hubs using an MPLS backbone and using two keys servers. The bank is concerned with security and replay attacks. Which two actions should you use to tune the GET VPN to meet the bank requirements? (Choose two)

- A. Increase the cryptographic key size.
- B. Replace unicast rekey with multicast rekey.
- C. Reduce the SAR clock interval duration
- D. Increase the TEK and KEK lifetime.
- E. Reduce the Dead Peer Detection periodic timer.

**Answer:** BC

#### NEW QUESTION 54

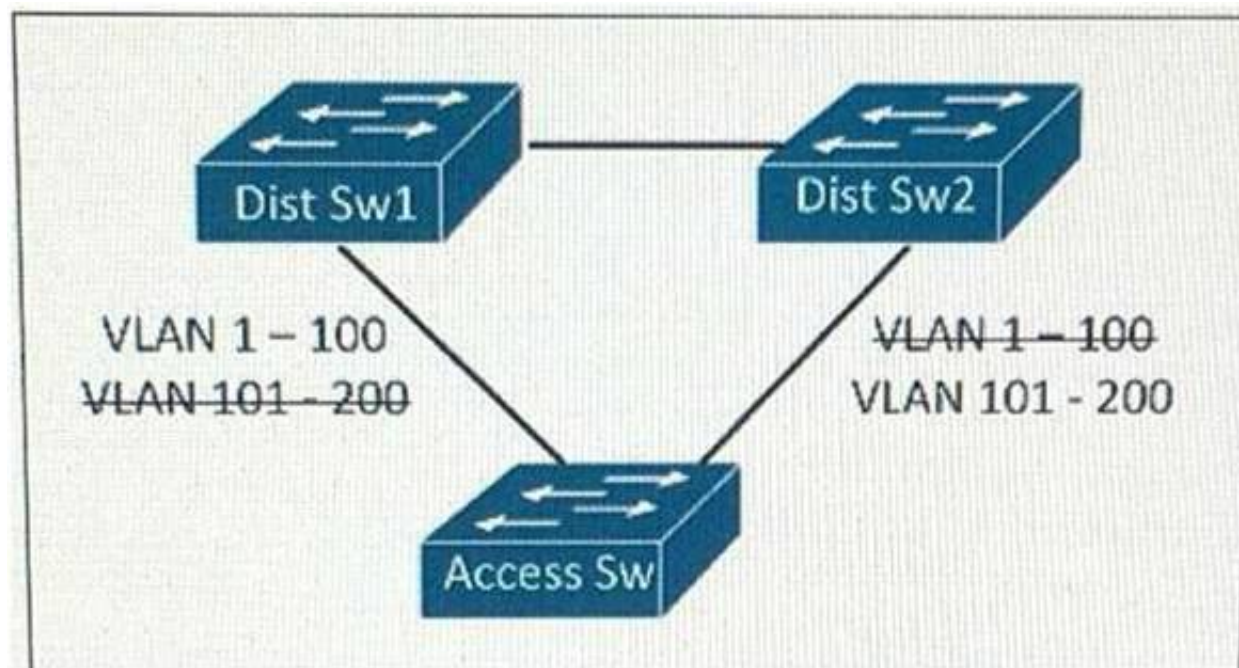
The enterprise customer ABC Corp will deploy a centralized unified communications application to provide voice, and instant messaging to their branch offices. Some of the branch offices are located in remote locations and are connected via a 1.5 Mb/s Layer 3 VPN connection. Which two ways are the most cost-effective to ensure that this new application is implemented properly? (Choose two)

- A. Use a low bitrate codec such as G 711
- B. Set voice activity detection to avoid sending packets when the conversations is silent
- C. Enable VRF-Lite on the CE router to create a separate voice VRF
- D. Set LFI on the WAN connections to interleave the small voice packets with the large data packets
- E. Set WAN optimization on the CE router to compress the voice packets for improved bandwidth utilization and performance
- F. Use a low bitrate codec such as G 729

**Answer:** BF

#### NEW QUESTION 57

Refer to the exhibit.



This layer 2 network is expected to add 150 VLANs over the next year, In addition to the existing 50 VLANs within the network which STP types will support this design requirement the least amount of CPU resource and achieving load balancing?

- A. PVST+
- B. CST
- C. MST
- D. RSTP

**Answer:** C

#### NEW QUESTION 60

You are solving a design failure on a massive Hadoop cluster network that has an application with TCP incast behavior (also known as TCP Throughput collapse) affecting its many-to-one communications with packet loss at the last-hop network device. Which metric must be measured to ensure that the network provides the best performance for this application?

- A. Availability
- B. Bandwidth utilization
- C. Jitter values
- D. Buffer utilization

**Answer:** D

#### NEW QUESTION 65

A customer has a DMVPN network with EIGRP as the overlay protocol. EIGRP timers cannot be shortened, yet the customer requires the detection of lost connectivity between neighbors in less than three seconds. Which action achieves this requirement?

- A. Adjust the GRE keepalive timers
- B. Enable BFD
- C. Deploy IPsec dead peer detection
- D. Adjust the NHRP timers.

**Answer:** B

#### NEW QUESTION 67

Why is a redundant PIM stub router topology a bad network design decision?

- A. Multicast convergence takes long
- B. Multicast traffic duplication will occur
- C. It interferes with IGMP snooping
- D. It interfaces with PIM snooping

**Answer:** B

#### NEW QUESTION 70

Which two general SDN characteristics? (Choose two)

- A. Southbound interfaces are interfaces used between the control plane and the data plane
- B. OpenFlow is considered one of the first Northbound APIs used by SDN controllers
- C. Northbound interfaces are open interfaces used between the control plane and the data plane
- D. The separation of the control plane from the data plane
- E. OVSDB is an application database management protocol

**Answer:** AD

#### NEW QUESTION 72

An network is designed to use OSPF to reach eBGP peers. Which condition should be avoided in the design to potentially prevent the eBGP peers do not flap continuously in case of link failure?

- A. Disable BGP synchronization.
- B. Advertise IP addresses used on eBGP peer statement via a non-backbone OSPF area.
- C. Advertise via eBGP IP addresses used on eBGP peer statements.
- D. Use an ACL to block BGP in one direction.

**Answer:** C

#### NEW QUESTION 73

You are designing an IPv4 any source multicast redundancy solution. Which technology ensures the quickest RP convergence?

- A. Bootstrap router
- B. MSDP anycast RP
- C. Auto-RP
- D. Embedded RP

**Answer:** B

#### NEW QUESTION 75

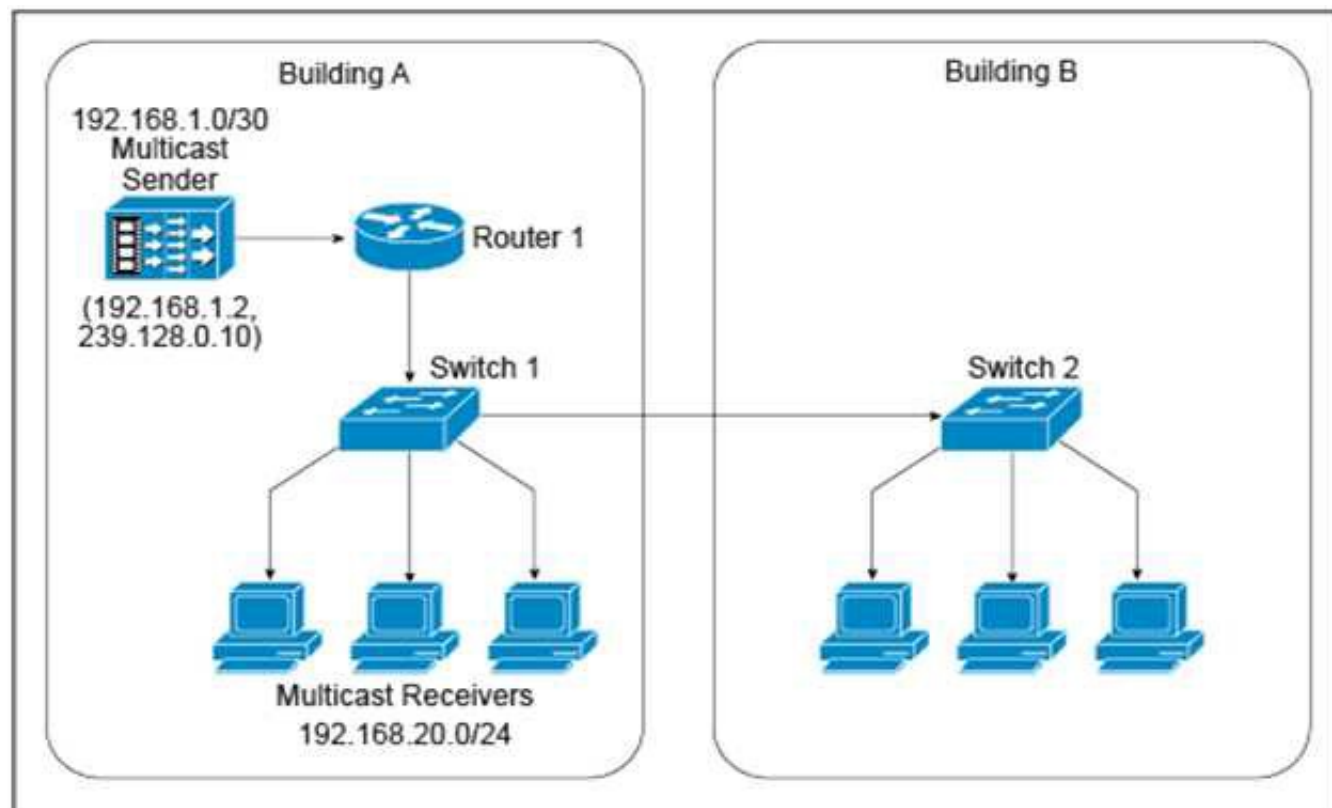
You are designing a new multisite data center network within the same city. You are using the newest routers that run OSPF and DWDM point-to-point interfaces for site-to-site connectivity. Your primary objective is to use the fastest possible method for interface failure detection. Which method achieves this objective?

- A. UDLD
- B. Interface event dampening
- C. LoS/AIS event faults
- D. Fast-hello timers

**Answer: C**

#### NEW QUESTION 78

Refer to the exhibit.



A new IPv4 multicast-based video-streaming service is being provisioned. During the design- validation tests, you realize that the link between the two buildings is carrying multicast traffic even when there are no receivers connected to the switch in Building B and despite IGMP snooping being enabled on both Layer 2 switches and IGMPv2 runs on the hosts. Which design change will prevent the multicast traffic from being unnecessarily flooded throughout the campus network?

- A. Enable PIM snooping on both Layer 2 switches.
- B. Enable multicast storm control on the link between Switch 1 and Switch 2.
- C. Use static Layer 2 MAC forwarding entries on Switch 1.
- D. Change the IPv4 multicast group address such that it excludes the usage of link-local MAC addresses.
- E. Ensure that Switch 1 is an IGMP querier.

**Answer: D**

#### NEW QUESTION 82

Which option is a critical mechanism to optimize convergence speed when using MPLS FRR?

- A. IGP timers
- B. Bandwidth reservation
- C. Shared risk link groups
- D. Down detection

**Answer: D**

#### NEW QUESTION 84

You are designing a solution to connect a primary data center to a disaster recovery site. The hosted applications will be web and email servers that are provided through a virtualized environment. Which connectivity technology should you consider for this design?

- A. L2TPV3.
- B. VPWS.
- C. Point-To-Point GRE tunnels.
- D. VPLS.

**Answer: A**

#### NEW QUESTION 87

Which OSPF design consideration, with regards to simplicity and address preservation, must be considered when connecting two Layer 3 switches directly using 10 GBASE-T cabling and formatting an OSPF neighbor adjacency?

- A. Mesh groups must be included in the design
- B. The OSPF Hello and Dead timers must be tuned to detect failures as quickly as possible
- C. The OSPF network type must be set to point-to-multipoint
- D. An OSPF neighbor adjacency formed over loopback interfaces must be placed in Area 0



E. The OSPF network type must be set to point-to-point

**Answer:** E

#### NEW QUESTION 89

A network is designed to use OSPF to reach eBGP peers. For eBGP peers to stay stable in case of a link failure, what condition should be avoided?

- A. Advertise IP addresses used on eBGP statements via a normal OSPF area
- B. Use an ACL to block BGP in one direction
- C. Disable BGP synchronization
- D. Advertise IP addresses used on eBGP peer statements via eBGP

**Answer:** D

#### NEW QUESTION 91

Which two options are Loop-Free Alternate design considerations? (Choose two)

- A. MPLS TE must be enabled because it is used for building the backup paths
- B. Backup coverage and effectiveness is dependent on the network topology
- C. It can simplify the capacity planning by matching the backup path with the post-convergence path
- D. It provides an optional backup path by avoiding low bandwidth and edge links
- E. It can impact SLA-sensitive appliance by routing traffic to low bandwidth links while IGP convergence is in progress

**Answer:** BE

#### NEW QUESTION 93

You must make IGP redesign recommendations for a client that has old equipment, with low CPU power and memory, that they do not have budget replace. They are very concerned about CPU load on routers. They are using IS-IS as the IGP in a single I1 area and all routers are connected to each other with point-to-point links. Which method do you recommend to reduce or limit CPU overhead caused by IS-IS?

- A. Use mesh groups to limit flooding of LSAs
- B. Implement wide style metrics for IS-IS on all routers
- C. Select a router to act as a pseudowire to limit topology synchronization
- D. Divide the router into multiple areas and implement address summarization

**Answer:** A

#### NEW QUESTION 94

You are hired to assist an enterprise customer to design their global WAN network. A protected DWDM circuit with disjoint fiber routes and guaranteed restoration times is ordered to connect two hub sites. Which option is a BFD design consideration in relation to protected DWDM?

- A. BFD failure detection must be faster than DWDM restoration time
- B. The BFD hello timer must match the DWDM circuit restoration time
- C. BFD failure detection must be longer than DWDM restoration time
- D. BFD cannot be used with protected DWDM

**Answer:** C

#### NEW QUESTION 96

An enterprise customer A with provider-independent address space is dual-homed to two ISP. Which two options , when combined, allow for customer A to efficiently achieve out-bond traffic load- balancing? ( Choose two)

- A. Advertise Customer A subnets with a shorter AS path prepend to one of the ISPs than to the other
- B. Advertise Customer A subnets with different MED values to the two ISPs
- C. Accept a default route from both ISPs
- D. Make the CE connected to both ISPs route reflector
- E. Accept the routes originated on both ISPs and their direct peers

**Answer:** CE

#### NEW QUESTION 100

Across a large WAN network, there will be new video traffic being distributed from a single source at any given time however, the video source might originate from different parts of the multicast domain at different times . Which multicast technology provides for this multicast traffic to be distributed with optimal path selection to the source?

- A. Any source Multicast.
- B. PIM sparse mode.
- C. Bidirectional PIM.
- D. Source Specific Multicast.

**Answer:** D

#### NEW QUESTION 103

Which two options are IoT use cases that require the low-latency and high reliability that 5G

networks provide? (Choose two)

- A. Sports and Fitness
- B. Smart Home
- C. Automotive
- D. Smart Cities
- E. Industrial Automation
- F. Health and wellness

**Answer:** CE

#### NEW QUESTION 106

Refer to the exhibit.



This enterprise customer wants to stream one-way video from their head office to eight branch offices using multicast. Their current service provider provides a Layer 3VPN solution and manages the CE routers, but they do not currently multicast. Which solution quickly allows this multicast traffic to go through while allowing for future scalability?

- A. Enable a GRE tunnel between nodes C1 and C4
- B. Enable a GRE tunnel between nodes CE1 and CE2
- C. Enable a GRE tunnel between nodes C2 and C4
- D. Implement hub and spoke MPLS VPN over DMVPN(also known as 2547oDMVPN) between CE1 and CE2
- E. The service provider must provide a Draft Rosen Solution to enable a GRE tunnel node PE1 and PE2

**Answer:** B

#### NEW QUESTION 109

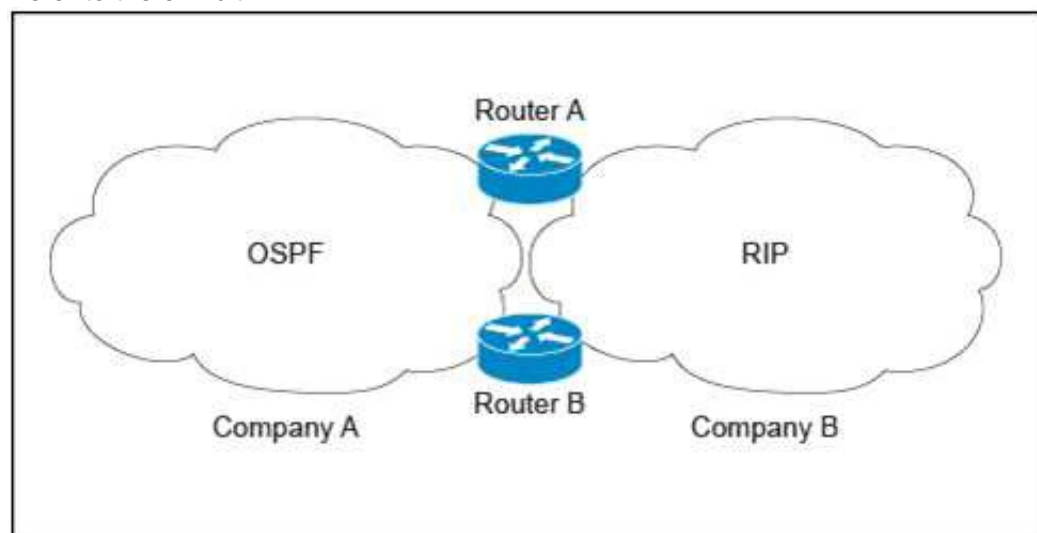
A customer requests that you determine how much of their remote branch traffic into a central data center is related to a call manager that resides in the data center. Which solution do you recommend?

- A. Enable NetFlow on branch routers
- B. Enable netFlow on central data center routers
- C. Perform SNMP polling of central data center routers
- D. Perform SNMP polling of branch routers
- E. Create an ACL on the local call manager switch with logging enabled
- F. Span traffic from the switch port on the call manager to a data analyzer

**Answer:** B

#### NEW QUESTION 113

Refer to the exhibit.



Company A is running a single-area OSPF, and Company B is running RIP as the IGP with no overlapping IP address spaces. Company A has just acquired Company B and both networks must be merged. Which three design components are recommended to guarantee connectivity and redundancy between the two networks? (Choose three.)

- A. Enable mutual redistribution between OSPF and RIP on one border router.
- B. Enable mutual redistribution between OSPF and RIP on Router A and Router B using route tags.
- C. Increase the administrative distance to 130 for the OSPF external prefixes on Router A and Router B.
- D. Implement an ACL on Router A and Router B to prevent OSPF external routes from being installed in the OSPF database.
- E. Filter external routes on Router A and Router B based on route tags.

**Answer:** BCE

#### NEW QUESTION 115

The service provider that you work for wants to offer IPv6 internet service to its customers without upgrading all of its access equipment to support IPv6, which transition technology do you recommend?

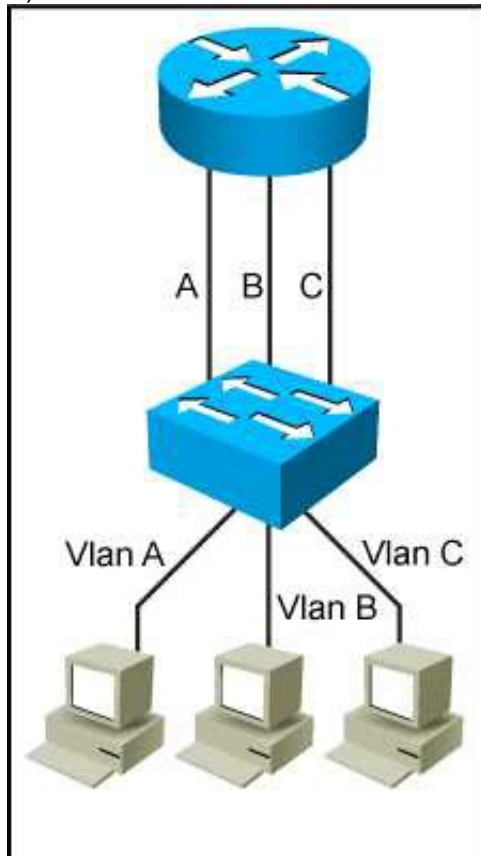
- A. NAT64
- B. CGN
- C. Dual-stack CPE
- D. 6RD

**Answer: D**

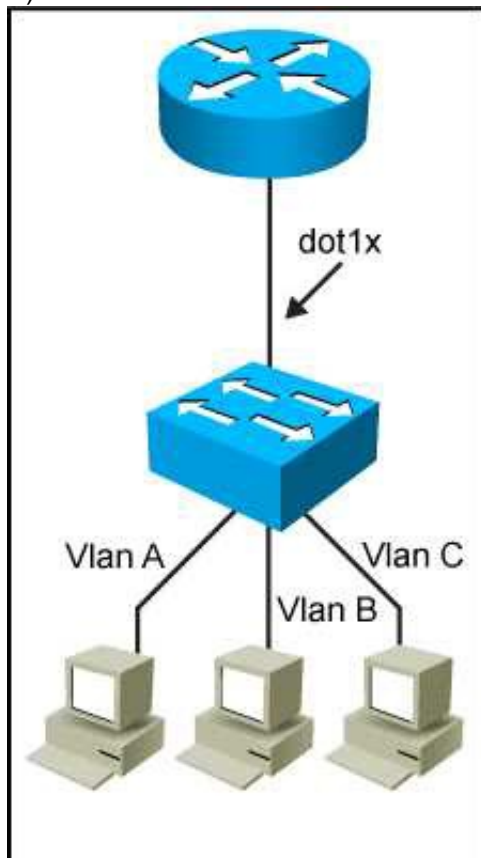
**NEW QUESTION 116**

Which network topology is characterized by a link fate-sharing situation?

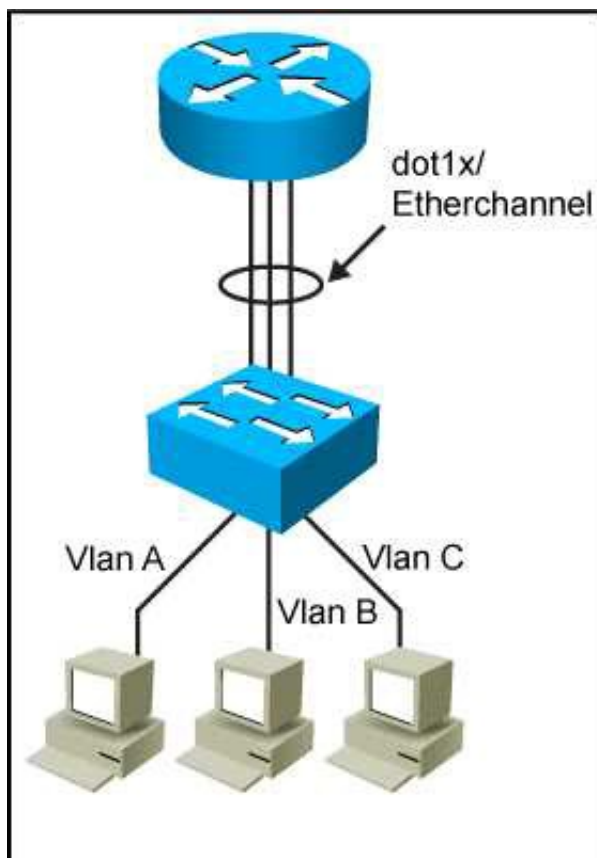
A)



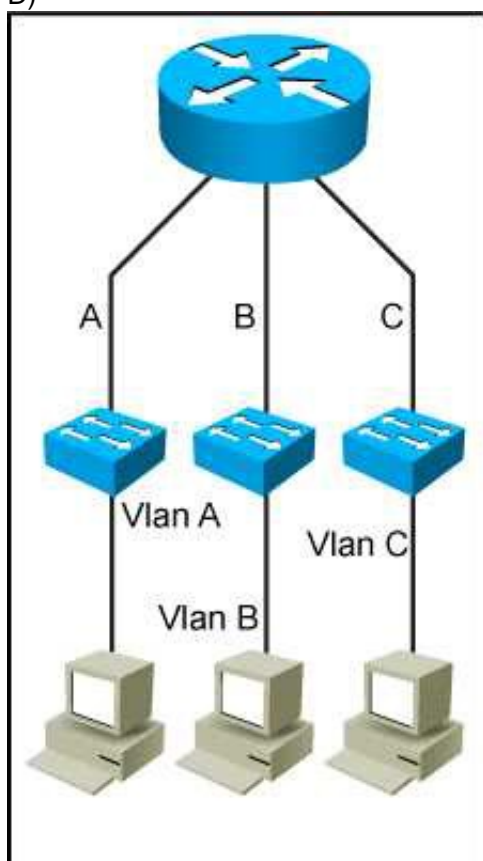
B)



C)



D)



- A. Exhibit A
- B. Exhibit B
- C. Exhibit C
- D. Exhibit D

**Answer: B**

#### NEW QUESTION 119

What is a design aspect regarding multicast transport for MPLS Layer 3 VPNs using the Rosen Draft implementation?

- A. LDP is the multicast control plane protocol.
- B. Multicast traffic is forwarded over GRE tunnels.
- C. Multicast traffic is forwarded over LDP or RSVP signaled LSPs.
- D. Using the MDT SAFI in BGP ensures that PIM can be disabled in the core.

**Answer: B**

#### NEW QUESTION 123

An enterprise network has two core routers that connect to 200 distribution routers and uses full-mesh iBGP peering between these routers as its routing method. The distribution routers are experiencing high CPU utilization due to the BGP process. Which design solution is the most effective?

- A. Increase the memory on the distribution routers
- B. Increase the memory on the core routers
- C. Implement route reflectors on the two core routers
- D. Increase bandwidth between the core routers
- E. Implement eBGP between the core and distribution routers



**Answer:** C

**NEW QUESTION 124**

A healthcare customer requested that health statistics from their infrastructure devices are to be sent over their service provider MPLS network. Which protocol must be enabled?

- A. SNMPv3
- B. Syslog TLS
- C. syslog
- D. SNMPv2
- E. SSH

**Answer:** A

**NEW QUESTION 127**

Which two application requirements are mandatory for traffic to receive proper treatment when placed in the priority queue? (Choose two)

- A. WRED drop treatment
- B. Small transactions (HTTP – like behavior)
- C. Tolerance to packet loss
- D. Intolerance to jitter
- E. TCP based application

**Answer:** CD

**NEW QUESTION 132**

Which two functions are performed at the distribution layer of the three-layer hierarchical network design model? (Choose two).

- A. Fault isolation
- B. QoS classification and marking boundary
- C. Fast transport
- D. Reliability
- E. Load balancing

**Answer:** AE

**NEW QUESTION 136**

Which option reduces jitter in a VoIP network?

- A. Deploy WRED
- B. Deploy call Admission Control
- C. Adjust the playout delay buffer at the receiver
- D. Increase the bandwidth of the links

**Answer:** C

**NEW QUESTION 137**

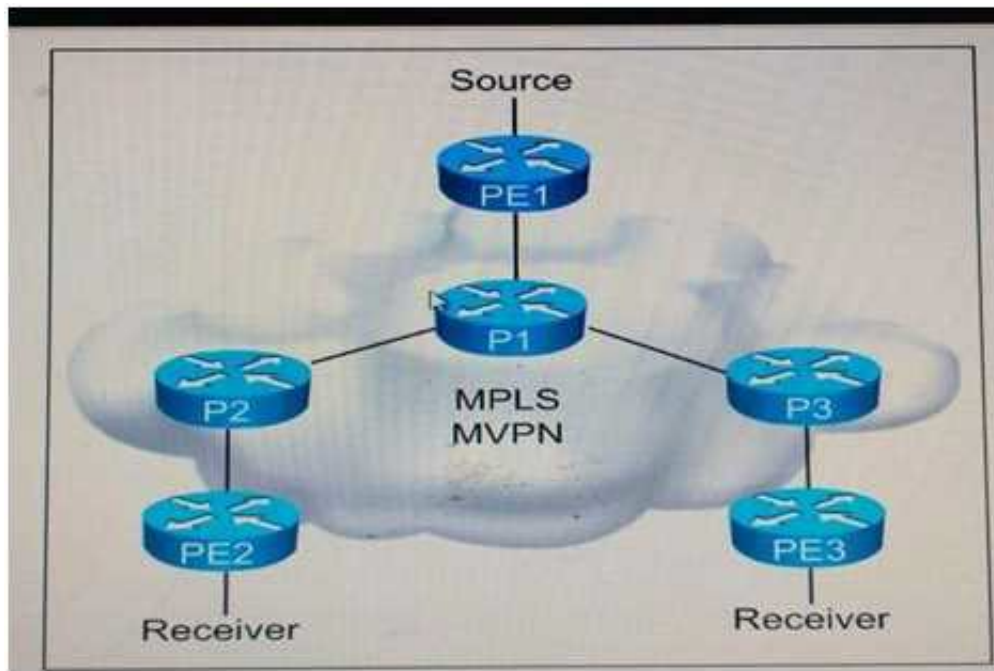
Which option describes the fundamental design differences between an IP-based network design and a SAN-based?

- A. An IP-based design has redundant connectivity in the fabric and high amounts of east-west traffic, whereas a SAN-based design uses redundancy from a dual-attached host, which uses separate fabrics and has very little east-west traffic
- B. An IP-based design has redundancy from the host and high amounts of east-west traffic, whereas a SAN-based design uses redundancy in the fabric and very little east-west traffic
- C. An IP-based design has redundant connectivity in the fabric and high amounts of east-west traffic, whereas a SAN-based design uses zoning based redundancy which uses separate fabrics and has very little east-west traffic
- D. An IP-based design has redundant connectivity in the fabric and very little east-west traffic, whereas a SAN-based design uses redundancy in the host, which uses separate fabrics and has high amounts of east-west traffic

**Answer:** A

**NEW QUESTION 138**

Refer to the exhibit.



You are a network designer who is given these design requirements: Multicast services must be provided for Layer 3 VPN customers  
The same forwarding technology must be used as Layer 3 VPN unicast packets  
Replication of multicast traffic is not allowed on the ingress PE  
Which multicast VPN technology conforms to the design requirements?

- A. Multipoint-to-point LDP
- B. MSDP
- C. MLDP VPN
- D. Rosen Draft using LDP

**Answer: C**

#### NEW QUESTION 139

Which mechanism enables small, unmanaged switches to plug into ports of access switches without risking switch loops?

- A. PortFast
- B. UDLD
- C. Root guard
- D. BPDU guard

**Answer: C**

#### NEW QUESTION 143

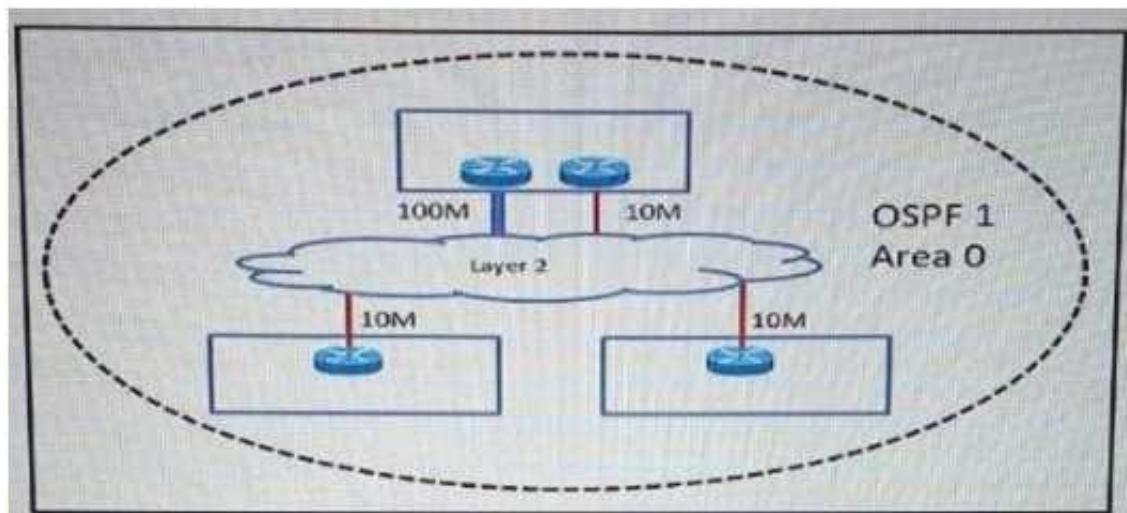
Which main IoT migration aspect should be reviewed for a manufacturing plant?

- A. Sensors
- B. Security
- C. Applications
- D. Wi-Fi Infrastructure
- E. Ethernet Switches

**Answer: A**

#### NEW QUESTION 148

Refer to the exhibit.



An enterprise has three sites over a Layer 2 Metro Ethernet ELAN service. 100Mb/s and 10 Mb/s links have been provisioned to provide redundancy for the head office. When OSPF routing enabled to provide connectivity and the correct bandwidth statement has been applied to each interface, the branch sites observe two equal-cost routes to the head office. The enterprise wants to send all traffic through the 100 Mb/s link and use the 10Mb/S link strictly as a backup. Which OSPF network type must be set to ensure that the head office 100 Mb/s circuit is preferred over the 10 Mb/s circuit, at the same time minimize the amount of configuration required on all of the routers throughout the network?

- A. NBMA
- B. Point-to-multipoint
- C. Point-to-point
- D. Broadcast

**Answer:** C

#### NEW QUESTION 149

Which effect of designing a Layer 2 network using the PortFast fast feature with PVST+ is true?

- A. It shuts down the port when receiving the superior BPDU
- B. It accelerates the network convergence on the trunk uplinks
- C. In combination with BPDU filtering, it causes the switch port to stay in the forwarding state
- D. It moves the switch port directly to the forwarding state

**Answer:** D

#### NEW QUESTION 154

In a design around fast convergence in case of a link failure, what is the justification for using a point-to-point OSPF network type on the Ethernet links between leaf-and-spine switches on a data center fabric?

- A. Link failure tears down neighbor relationships regardless of network type configured
- B. Type 1 LSAs are not generated on a point-to-point network type
- C. Adjacencies can be built faster without a DR/BDR on the segment
- D. The fabric memory requirements are significantly smaller than with a DR/BDR on each leaf and spine segment
- E. The point-to-point network type allows for NSF to be used in this design

**Answer:** C

#### NEW QUESTION 157

A data center design requires monitoring of their business critical voice and video services accessed by remote locations. Which two items are applicable? (Choose two)

- A. If multiple applications share the same DSCP or CoS values, NBAR can be utilized
- B. The applications being monitored must be assigned a unique CoS value
- C. If multiple applications share the same the same DSCP or CoS values, IPFIX can be utilized
- D. The applications being monitored must be assigned a unique QoS profile
- E. The applications being monitored must be assigned unique DSCP values
- F. The reporting data must be assigned to a QoS profile to ensure accurate statistics

**Answer:** CF

#### NEW QUESTION 161

Which MPLS attribute is required for links to carry a given MPLSTE tunnel?

- A. TE tunnel destination address
- B. Tunnel path-selection metric
- C. Affinity
- D. Next-hop backup tunnel

**Answer:** A

#### NEW QUESTION 162

You are working on a network design plan for a company with approximately 2000 sites. The sites will be connected using the public Internet. You plan to use private IP addressing in the network design, which will be routed without NAT through an encrypted WAN network. Some sites will be connected to the Internet with dynamic public IP addresses, and these addresses may change occasionally. Which VPN solution will support these design requirements?

- A. GET VPN must be used, because DMVPN does not scale to 2000 sites.
- B. DMVPN must be used, because GET VPN does not scale to 2000 sites.
- C. GET VPN must be used, because private IP addresses cannot be transferred with DMVPN through the public Internet.
- D. DMVPN must be used, because private IP addresses cannot be transferred with GET VPN through the public Internet.
- E. GET VPN must be used, because DMVPN does not support dynamic IP addresses for some sites.
- F. DMVPN must be used, because GET VPN does not support dynamic IP addresses for some sites.

**Answer:** D

#### NEW QUESTION 164

A Mobile Service Provider would like to design and deploy an Ethernet service which has similar physical link failover/failback characteristics on the active/backup links as the APS/MSP SONET properties. Which Layer 2 service addresses should be considered to address this design feature?

- A. Port-Channel
- B. MLPPP
- C. Flex Link
- D. Ethernet Pseudowire

**Answer:** C

#### NEW QUESTION 165

Which two IoT use cases require the low latency and high reliability that 5G networks provide?

- A. Smart Home
- B. Automotive
- C. Health and Wellness
- D. Smart Cities
- E. Sports and Fitness

**Answer:** BC

#### NEW QUESTION 169

Which aspect is a significant disadvantage of containers?

- A. Security
- B. Time to deploy
- C. Inefficiency
- D. Reduced operational overhead
- E. Resource consumption

**Answer:** A

#### NEW QUESTION 171

Which two statements about VXLAN are true? (Choose two)

- A. VXLAN is a Cisco proprietary solution
- B. VXLAN is an encapsulation method used to create a Layer 3 overlay network
- C. VXLAN can be used to enforce Layer 2 isolation in a multitenant infrastructure
- D. VXLAN uses the Spanning Tree protocol for loop prevention
- E. VXLAN overcomes the 802.1Q virtual LAN address space limitation

**Answer:** BE

#### NEW QUESTION 176

When is it required to leak routes into an IS-IS level 1 area?

- A. When MPLS L3VPN PE devices are configured in the level 1 areas
- B. When unequal cost load balancing is required between the backbone and nonbackbone areas
- C. When a multicast RP is configured in the nonbackbone area
- D. When equal cost load balancing is required between the backbone and nonbackbone areas

**Answer:** A

#### NEW QUESTION 179

A network has several routers running IS-IS L1L2 mode on the same Ethernet segment. Which action reduces to a minimum the number of IS-IS adjacencies in this segment?

- A. Define only the router on the segment to be DIS
- B. Change all routers connected to this segment to a single-level area
- C. Make the interface priority on the backup DIS lower than the primary DIS
- D. Change half the routers to be L1-only and other half to be L2-only on this segment

**Answer:** B

#### NEW QUESTION 183

What is a design benefit of PortFast?

- A. PortFast allows small, unmanaged switches to be plugged into ports of access switches without risking switch loops
- B. PortFast disables spanning-tree on the port, which puts the port into the forwarding state immediately after it is connected
- C. Portfast does not generate a spanning-tree topology change when a station on a port is connected or disconnected
- D. PortFast detects one-way communications on the physical port, when prevents switch loops
- E. PortFast prevents switched traffic from traversing suboptimal paths on the network
- F. PortFast prevents switch loops that are caused by a unidirectional point-to-point link condition on Rapid PVST+ and MST

**Answer:** B

#### NEW QUESTION 185

Which solution suppress the effect of excessive interface flapping events on routing protocols?

- A. IP Event Dampening
- B. SPF Backoff
- C. Carrier Delay
- D. BFD

**Answer:** A

#### NEW QUESTION 186

For a redesign requirement of the service provider network, summarization was implemented at multiple locations for each summary range. Now some customers



of the service provider are complaining of higher latency and performance issues for a server hosted in the summarized are

- A. Which design issues must be considered when creating the summarization?
- B. Summarization adds CPU overhead on the routers sourcing the summarized advertisement.
- C. Summarization prevents the visibility of the metric to the component subnets.
- D. Summarization causes packet loss when RPF is enabled.
- E. Summarization creates routing loops.

**Answer:** B

#### NEW QUESTION 187

A service provider must provide Internet connectivity to an MPLS Layer 3 VPN customer. Which solution allows this customer to have Internet access?

- A. Implement a global default route with a next hop in the VRF late on PE
- B. Implement policy-based routing between PE and CE
- C. Implement a default route in the VRF with a next hop in the global routing table of PE
- D. Implement destination NAT between the VRF and the global RIB of PE

**Answer:** C

#### NEW QUESTION 192

Which two SAN designs appropriate to support large-scale SAN environments? (Choose two)

- A. Edge-core-edge design
- B. Fibre Channel forwarder
- C. Split fabric design
- D. Core-edge design
- E. Dual fabric design

**Answer:** AD

#### NEW QUESTION 194

As part of network design, two geographically separated data centers must be interconnected using Ethernet-over-MPLS pseudowire. The link between the sites is stable, the topology has no apparent loops, and the root bridges for the respective VLANs are stable and unchanging. Which aspect must be the part of the design to mitigate the risk of connectivity issues between the data centers?

- A. Enable Spanning Tree on one data center, and Rapid Reconfiguration of Spanning tree on the other
- B. Ensure that the spanning tree diameter for one or more VLANs is not too large.
- C. Enable UDLD on the link between the data centers.
- D. Enable root guard on the link between the data centers.

**Answer:** B

#### NEW QUESTION 198

Which are two data plane hardening techniques? (Choose two)

- A. Infrastructure ACLs
- B. Control Plane Policing
- C. Redundant AAA servers
- D. Disable unused services
- E. Routing protocol authentication
- F. SNMPv3
- G. Warning banners

**Answer:** AB

#### NEW QUESTION 203

In a network with dynamic mutual redistribution between multiple OSPFv2 and EIGRP boundaries, which two mechanisms avoid suboptimal routing? (Choose two)

- A. Route filtering
- B. AD manipulation
- C. Matching EIGRP process ID
- D. Matching OSPF external routes
- E. Route tagging

**Answer:** AE

#### NEW QUESTION 204

A network design engineer is designing a new storage area network that combines multiple separate legacy SAN environments within a data center. Which technology isolates events within one of the SAN environment from the others?

- A. FCIP tunnels
- B. N-port ID Virtualization
- C. N-Port Virtualization
- D. Virtual SANs

Answer: D

#### NEW QUESTION 205

In an Ethernet link containing five routers with OSPF network interface type configured as broadcast, how many OSPF adjacencies are established on this Ethernet link?

- A. 7
- B. 5
- C. 10
- D. 20
- E. 6

Answer: A

#### NEW QUESTION 207

DRAG DROP

A service provider offers Layer 2 multipoint services to their customers. Drag the protocol on the left to the target on the right to indicate the protocols that can be used to signal pseudowires.

<div style="border: 1px solid black; background-color: #e0ffff; padding: 5px; margin-bottom: 5px; text-align: center;">LDP</div> <div style="border: 1px solid black; background-color: #e0ffff; padding: 5px; margin-bottom: 5px; text-align: center;">RSVP</div> <div style="border: 1px solid black; background-color: #e0ffff; padding: 5px; margin-bottom: 5px; text-align: center;">BGP</div> <div style="border: 1px solid black; background-color: #e0ffff; padding: 5px; text-align: center;">L2TPv3</div>	<div style="border: 1px solid black; width: 20px; height: 20px; margin: 0 auto;"></div>	<div style="border: 1px solid black; background-color: #ffcc00; padding: 5px; text-align: center; margin-bottom: 5px;">Protocols</div> <div style="border: 1px solid black; background-color: #ffffcc; height: 20px; margin-bottom: 5px;"></div> <div style="border: 1px solid black; background-color: #ffffcc; height: 20px;"></div>
---	---	--

- A. Mastered
- B. Not Mastered

Answer: A

Explanation:

Protocols

LDP

BGP

#### NEW QUESTION 209

DRAG DROP

A company recently had an outage after an employee plugged a switch into the corporate network, causing a change in the root bridge selection. You have been tasked to redesign the network to avoid such outages in the future. Drag the Rapid PVST+ features (on the left) that will prevent reoccurrences of this incident and drop them into their definitions on the right.

<div style="border: 1px solid black; background-color: #e0ffff; padding: 5px; text-align: center; margin-bottom: 5px;">Root Guard</div> <div style="border: 1px solid black; background-color: #e0ffff; padding: 5px; text-align: center; margin-bottom: 5px;">BPDU Guard</div> <div style="border: 1px solid black; background-color: #e0ffff; padding: 5px; text-align: center; margin-bottom: 5px;">DTP</div> <div style="border: 1px solid black; background-color: #e0ffff; padding: 5px; text-align: center; margin-bottom: 5px;">VTP Set to Transparent</div> <div style="border: 1px solid black; background-color: #e0ffff; padding: 5px; text-align: center; margin-bottom: 5px;">PortFast</div> <div style="border: 1px solid black; background-color: #e0ffff; padding: 5px; text-align: center;">Spanning-Tree Priority Changed from Default</div>	<div style="border: 1px solid black; background-color: #ffffcc; padding: 5px; margin-bottom: 5px;">A deterministic method to set the root bridge and the backup root bridge for each VLAN</div> <div style="border: 1px solid black; background-color: #ffffcc; padding: 5px; margin-bottom: 5px;">Prevents switches from propagating old or corrupt VLAN information through the Layer 2 network</div> <div style="border: 1px solid black; background-color: #ffffcc; padding: 5px; margin-bottom: 5px;">Puts the interface into an errdisable state if a connected device attempts to participate in STP</div> <div style="border: 1px solid black; background-color: #ffffcc; padding: 5px;">A preventive method of protecting an interface from accepting a superior BPDU</div>
---	--

- A. Mastered
- B. Not Mastered

Answer: A

**Explanation:**

Spanning-Tree Priority Changed from Default
VTP Set to Transparent
BPDU Guard
Root Guard

**NEW QUESTION 212**

**DRAG DROP**

Drag the fast convergence mechanisms on the left and drop them into the objectives that they accomplish.	
Link-State Partial SPF	Fast Detection
IP Event Dampening	Target
BFD	Slow Network Reaction When Events Occur Rapidly
Link-State Incremental SPF	Target
Link-State Exponential Backoff	Target
	Fast Route Calculation
	Target
	Target

- A. Mastered
- B. Not Mastered

**Answer:** A

**Explanation:**

Fast Detection
BFD
Slow Network Reaction When Events Occur Rapidly
IP Event Dampening
Link-State Exponential Backoff
Fast Route Calculation
Link-State Partial SPF
Link-State Incremental SPF

**NEW QUESTION 217**



DRAG DROP

Drag the design requirements on the left to the appropriate tool and protocols on the right. Not all tools and protocols will be used.	
chargeback billing	NetFlow
event collection and correlation	IP SLA
IP applications quality assurance	SNMP
average link utilization monitoring	Syslog
VoIP call quality monitoring	

- A. Mastered  
B. Not Mastered

**Answer:** A

**Explanation:**

chargeback billing
IP applications quality assurance
average link utilization monitoring
event collection and correlation

**NEW QUESTION 218**

DRAG DROP

You are designing a new data center network. Drag and drop new data center requirements on the left into the appropriate design principle on the right.

design a VLAN dedicated for storage traffic	fault isolation
design for server NIC teaming	redundancy
design a single VLAN per access switch	segmentation
design diverse cabling cabinets	

- A. Mastered  
B. Not Mastered

**Answer:** A

**Explanation:**

design a single VLAN per access switch
design for server NIC teaming
design a VLAN dedicated for storage traffic



**NEW QUESTION 222**

**DRAG DROP**

As a network designer for a major multiservice network, your first assignment is to improve the IS-IS convergence to meet application requirements. Drag and drop the convergence tools or techniques to be used on your proposal from the left into the corresponding convergence phase on the right.

SPF throttling

event detection

LSA throttling

event propagation

LSP throttling

event processing

IS-IS hello interval

RIB updating

limit LSP flooding

prefix prioritization

- A. Mastered
- B. Not Mastered

**Answer:** A

**Explanation:**

IS-IS hello interval

LSP throttling

SPF throttling

prefix prioritization

**NEW QUESTION 226**

.....

## Thank You for Trying Our Product

\* 100% Pass or Money Back

All our products come with a 90-day Money Back Guarantee.

\* One year free update

You can enjoy free update one year. 24x7 online support.

\* Trusted by Millions

We currently serve more than 30,000,000 customers.

\* Shop Securely

All transactions are protected by VeriSign!

**100% Pass Your 352-001 Exam with Our Prep Materials Via below:**

<https://www.certleader.com/352-001-dumps.html>