

## 70-741 Dumps

### Networking with Windows Server 2016

<https://www.certleader.com/70-741-dumps.html>



### NEW QUESTION 1

Your network contains an Active Directory domain named contoso.com. The domain contains two servers named Server1 and Server2 that run Windows Server 2016.

Server1 has IP Address Management (IPAM) installed. Server2 has the DHCP Server role installed. The IPAM server retrieves data from Server2.

You create a domain user account named User1.

You need to ensure that User1 can use IPAM to manage DHCP.

Which command should you run on Server1? To answer, select the appropriate options in the answer area.

## Answer Area

	▼		▼	User1 /add
net localgroup		"Server1\IPAM IP Audit Administrators"		
Set-AdGroup		"Server1\IPAM IP Users"		
		"Server1\IPAM MSM Administrators"		
		"Server2\Administrators"		
		"Server2\DHCP Administrators"		

- A. Mastered
- B. Not Mastered

**Answer: A**

**Explanation:**

## Answer Area

	▼		▼	User1 /add
net localgroup		"Server1\IPAM IP Audit Administrators"		
Set-AdGroup		"Server1\IPAM IP Users"		
		"Server1\IPAM MSM Administrators"		
		"Server2\Administrators"		
		"Server2\DHCP Administrators"		

### NEW QUESTION 2

Your network contains an Active Directory domain named contoso.com. The domain contains a member server named Server1 that runs Windows Server 2016.

Server1 has IP Address Management (IPAM) installed. IPAM uses a Windows Internal Database. You install Microsoft SQL Server on Server1.

You plan to move the IPAM database to SQL Server.

You need to create a SQL server login for the IPAM service account.

For which user should you create the login? To answer, select the appropriate options in the answer area.

	▼		▼
CONTOSO\		LOCAL SERVICE	
NT AUTHORITY\		LOCAL SYSTEM	
NT SERVICE		NETWORK SERVICE	
SERVER1\			

- A. Mastered
- B. Not Mastered

**Answer: A**

**Explanation:**



▼	
CONTOSO\	
NT AUTHORITY\	
NT SERVICE	
SERVER1\	

▼	
LOCAL SERVICE	
LOCAL SYSTEM	
NETWORK SERVICE	

### NEW QUESTION 3

You network contains an Active Directory named contoso.com. The domain contains two servers named Server1 and Server2 that run Windows Server 2016. Server1 has IP Address Management (IPAM) installed. Server2 has the DHCP Server role installed. The IPAM server retrieves data from Server2. The domain has two users named User1 and User2 and a group named Group1. User1 is the only member of Group1. Server1 has one IPAM access policy. You edit the access policy as shown in the Policy exhibit. (Click the Exhibit button.)

The DHCP scopes are configured as shown in the Scopes Exhibit. (Click the Exhibit button.)

Utilization	Scope Status	Scope Name	Scope ID	Access Scope	Prefix Length	Lease Duration	Percentage Utilized	Superscope
Under	Active	Scope3	10.0.0.0	\Global\Scope2	8	8:00:00:00	0.00	
Under	Active	Scope1	172.16.0.0	\Global\Scope1	16	8:00:00:00	0.79	
Under	Inactive	Scope2	192.168.1.0	\Global\Scope2	24	8:00:00:00	0.00	

Details View	
Scope3	
Scope Properties	
Description:	
Scope Name:	Scope3
Superscope Name:	
Server Name:	DC1.Contoso.com
Server IP:	172.16.1.10
Start IP Address:	10.10.1.0
End IP Address:	10.10.1.30
Exclusion Ranges:	
Scope ID:	11
Prefix Length:	8
Policy Activation Status:	A
DNS Dynamic Updates:	Ex
Name Protection:	O



For each of the following statements, select Yes if the statement is true. Otherwise, select No.

## Answer Area

Statements	Yes	No
User1 can modify the description of Scope1.	<input type="radio"/>	<input type="radio"/>
User2 can modify the description of Scope1.	<input type="radio"/>	<input type="radio"/>
User1 can modify the description of Scope2.	<input type="radio"/>	<input type="radio"/>

- A. Mastered
- B. Not Mastered

**Answer:** A

**Explanation:**

[https://technet.microsoft.com/en-us/library/dn268500\(v=ws.11\).aspx](https://technet.microsoft.com/en-us/library/dn268500(v=ws.11).aspx)

### NEW QUESTION 4

You have an IP Address Management (IPAM) deployment that is used to manage all of the DNS servers on your network. IPAM is configured to use Group Policy provisioning.

You discover that a user adds a new mail exchanger (MX) record to one of the DNS zones. You want to identify which user added the record.

You open Event Catalog on an IPAM server, and you discover that the most recent event occurred yesterday. You need to ensure that the operational events in the event catalog are never older than one hour.

What should you do?

- A. From the properties on the DNS zone, modify the refresh interval.
- B. From an IPAM\_DNS Group Policy object (GPO), modify the Group Policy refresh interval.
- C. From Task Scheduler, modify the Microsoft\Windows\IPAM\Audit task.
- D. From Task Scheduler, create a scheduled task that runs the Update-IpamServer cmdlet.

**Answer:** C

### NEW QUESTION 5

Your company has a main office in London and a branch office in Seattle. The offices connect to each other by using a WAN link.

In the London office, you have a Distributed File System (DFS) server named FS1 that contains a folder named Folder1.

In the Seattle office, you have a DFS server named FS2. All servers run Windows Server 2016.

You configure replication of Folder1 to FS2.

Users in both offices frequently add files in Folder1.

You monitor DFS Replication, and you discover excessive replication over the WAN link during business hours.

You need to reduce the amount of bandwidth used for replication during business hours. The solution must ensure that the users can continue to save content to Folder1.

What should you do?

- A. Modify the quota settings on Folder1 on FS2.
- B. Modify the properties of the replication group.
- C. Configure the copy of Folder1 on FS2 as read-only.
- D. Modify the replicated folder properties of Folder1 on FS1.

**Answer:** B

### NEW QUESTION 6

You have a server named Server1 that runs Windows Server 2016. You need to configure Server1 as a multitenant RAS Gateway. What should you install on Server1?

- A. the Network Controller server role
- B. the Data Center Bridging feature
- C. the Remote Access server role
- D. the Network Policy and Access Services server role

**Answer:** C

### NEW QUESTION 7

Note: This question is part of a series of questions that present the same scenario. Each question in the series contains a unique solution that might meet the stated goals. Some question sets might have more than one correct solution, while others might not have a correct solution.

After you answer a question in this section, you will NOT be able to return to it. As a result, these questions will not appear in the review screen.

You have a Hyper-V host named Server 1. The network adapters on Server1 have single root I/O virtualization (SR-IOV) enabled.

Server1 hosts a virtual machine named VM1 that runs Windows Server 2016. You need to identify whether SR-IOV is used by VM1.

Solution: You sign in to VM1. You open Device Manager and view the properties of the network adapters.

Does this meet the goal?

- A. Yes
- B. No

**Answer: B**

#### NEW QUESTION 8

You have a server named Server1 that runs Windows Server 2016. Server1 has the following routing table.

Network	Destination	Netmask	Gateway	Interface	Metric
0.0.0.0		0.0.0.0	192.168.2.1	192.168.2.92	10
10.0.0.0		255.0.0.0	On-link	10.10.0.11	261
10.10.0.11		255.255.255.25	On-link	10.10.0.11	261
10.20.200.0		255.255.255.0	10.10.0.2	10.10.0.11	5
10.255.255.255		255.255.255.255	On-link	10.10.0.11	261
127.0.0.0		255.0.0.0	On-link	127.0.0.1	306
127.0.0.1		255.255.255.255	On-link	127.0.0.1	306
127.255.255.255		255.255.255.255	On-link	127.0.0.1	306
172.16.0.0		255.240.0.0	On-link	172.16.0.1	261
172.16.0.1		255.255.255.255	On-link	172.16.0.1	261
172.31.255.255		255.255.255.255	On-link	172.16.0.1	261
192.168.2.0		255.255.255.0	On-link	192.168.2.92	266
192.168.2.92		255.255.255.255	On-link	192.168.2.92	266
192.168.2.255		255.255.255.255	On-link	192.168.2.92	266
224.0.0.0		240.0.0.0	On-link	127.0.0.1	306
224.0.0.0		240.0.0.0	On-link	172.16.0.1	261
224.0.0.0		240.0.0.0	On-link	10.10.0.11	261
224.0.0.0		240.0.0.0	On-link	192.168.2.92	266
255.255.255.255		255.255.255.255	On-link	127.0.0.1	306
255.255.255.255		255.255.255.255	On-link	172.16.0.1	261
255.255.255.255		255.255.255.255	On-link	10.10.0.11	261
255.255.255.255		255.255.255.255	On-link	192.168.2.92	266

What will occur when Server1 attempts to connect to a host that has an IP address of 172.20.10.50?

- A. Server1 will attempt to connect directly to 172.20.10.50.
- B. Server1 will route the connection to 10.10.0.2.
- C. Server1 will silently drop the connection attempt.
- D. Server1 will route the connection to 192.168.2.1.

**Answer: D**

#### Explanation:

<http://www.techrepublic.com/article/understanding-routing-tables/>

#### NEW QUESTION 9

Note: This question is part of a series of questions that present the same scenario. Each question in the series contains a unique solution that might meet the stated goals. Some question sets might have more than one correct solution, while others might not have a correct solution.

After you answer a question in this sections, you will NOT be able to return to it. As a result, these questions will not appear in the review screen.

You have a server named Server1 that has the Network Policy and Access Services server role installed. You create a Shared Secret Network Policy Server (NPS) template named Template1.

You need to view the shared secret string used for Template1.

Solution: From the Network Policy Server console, you export the templates, and you view the exported XML file.

Does this meet the goal?

- A. Yes
- B. No

**Answer: B**

#### NEW QUESTION 10

Note: This question is part of a series of questions that present the same scenario. Each question in the series contains a unique solution that might meet the stated goals. Some question sets might have more than one correct solution, while others might not have a correct solution.

After you answer a question in this sections, you will NOT be able to return to it. As a result, these questions will not appear in the review screen.

Your network contains an Active Directory domain named contoso.com

You need to create a Nano Server image named Nano1 that will be used as a virtualization host. The windows server 2016 source files are located in drive D.

Solution: You run the following cmdlet.

New-NanoServerImage -Edition Datacenter -DeploymentType Host -Package Microsoft-NanoServerCompute-Package -MediaPath 'D:\' -TargetPath C:\Nano1\Nano1.wim -ComputerName Nano1 -DomainName Contoso.com Does this meet the goal?

- A. Yes
- B. NO

**Answer: A**

#### NEW QUESTION 10

Your network contains an Active directory forest named contoso.com. The forest has a Distributed File System (DFS) namespace named \\contoso.com\namespace1.

The domain contains a file server named Server1 that runs Windows Server 2016. You create a folder named Folder1 on Server1.

You need to use Folder1 as a target for Namespace1.

Which two cmdlets should you use? Each correct answer presents part of the solution.  
NOTE: Each correct selection is worth one point.

- A. New-DfsnFolderTarget
- B. Install-WindowsFeature
- C. Grant-DfsnAccess
- D. New-DfsnFolder
- E. New-SmbShare

**Answer:** AC

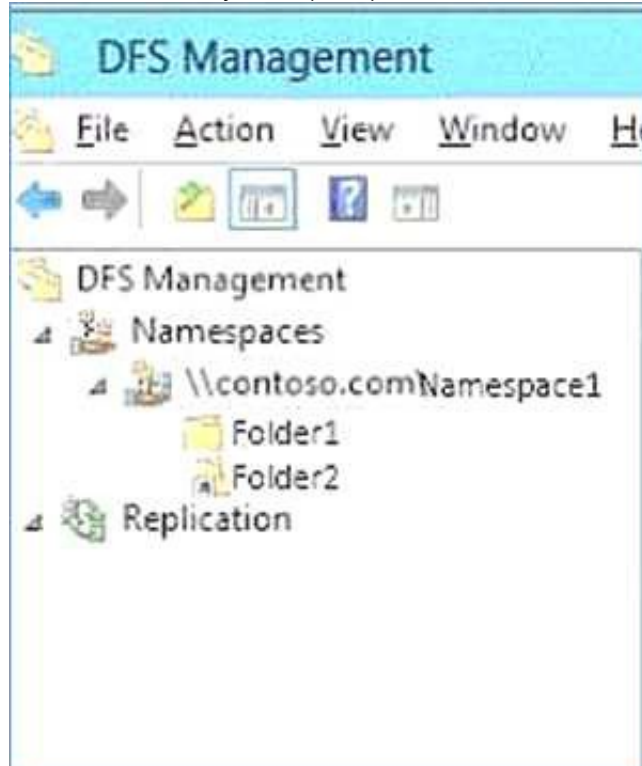
**Explanation:**

References:

<https://docs.microsoft.com/en-us/powershell/module/dfs/new-dfsnfoldertarget?view=win10-ps> <https://docs.microsoft.com/en-us/powershell/module/dfs/grant-dfsnaccess?view=win10-ps>

**NEW QUESTION 15**

Your network contains an Active Directory forest named contoso.com. The forest has three sites named Site1, Site2 and Site3. Distributed File System (DFS) for the forest is configured as shown in the exhibit.



The forest contains a server named Server2 that hosts the DFS namespace.

\\Contoso.com\Namespace1\Folder2 has the following configuration.

```
Destination                :
NamespacePath              : \\contoso.com\namespace1\folder2
TimeToLive                 : 1800
PSComputerName             :
CimClass                   : Root/Microsoft/Windows/dfs:MSFT_DfsNamespaceFolder
CimInstanceProperties      : (Description, Flags, NamespacePath, State...)
CimSystemProperties        : Microsoft.Management.Infrastructure.CimSystemProperties
```

\\Contoso\Namespace1\Folder2 has the targets configured as shown in the following table.

Path	Site	Referral status
\\Server1\Folder2	Site1	True
\\Server2\Folder2	Site2	False
\\Server3\Folder2	Site2	True

For each of the following statement, Select Yes if Statement is true. Otherwise, select No.



## Answer Area

Statements	Yes	No
If users from Site1 connect to \\contoso.com\Namespace\Folder2, the users will always be redirected to Server1.	<input type="radio"/>	<input type="radio"/>
If users from Site2 connect to \\contoso.com\Namespace\Folder2, the users will be redirected to either Server2 or Server3.	<input type="radio"/>	<input type="radio"/>
If users from Site3 connect to \\contoso.com\Namespace\Folder2, the users will be redirected to either Server1, Server2, or Server3.	<input type="radio"/>	<input type="radio"/>

- A. Mastered  
B. Not Mastered

**Answer:** A

**Explanation:**

## Answer Area

Statements	Yes	No
If users from Site1 connect to \\contoso.com\Namespace\Folder2, the users will always be redirected to Server1.	<input checked="" type="radio"/>	<input type="radio"/>
If users from Site2 connect to \\contoso.com\Namespace\Folder2, the users will be redirected to either Server2 or Server3.	<input type="radio"/>	<input checked="" type="radio"/>
If users from Site3 connect to \\contoso.com\Namespace\Folder2, the users will be redirected to either Server1, Server2, or Server3.	<input type="radio"/>	<input checked="" type="radio"/>

### NEW QUESTION 16

Note: This question is part of a series of questions that present the same scenario. Each question in the series contains a unique solution. Determine whether the solution meets the stated goals.

Refer to exhibit:

Private1	Private
Internal1	Internal
External1	External

Server1 has two virtual machines named VM1 and VM that run Windows Server 2016. VM1 connects to Private VM2 has two network adapters.

You need to ensure that VM1 connects to the corporate network by using NAT.

Solution: You connect VM2 to private1 and External1. You install the Remote Access Serverrole on VM2, and you configure NAT in the Routing and Remote Access console. You configure VM1 to use VM2 as the default gateway.

Does this meet the goal?

- A. Yes  
B. No

**Answer:** A

### NEW QUESTION 18

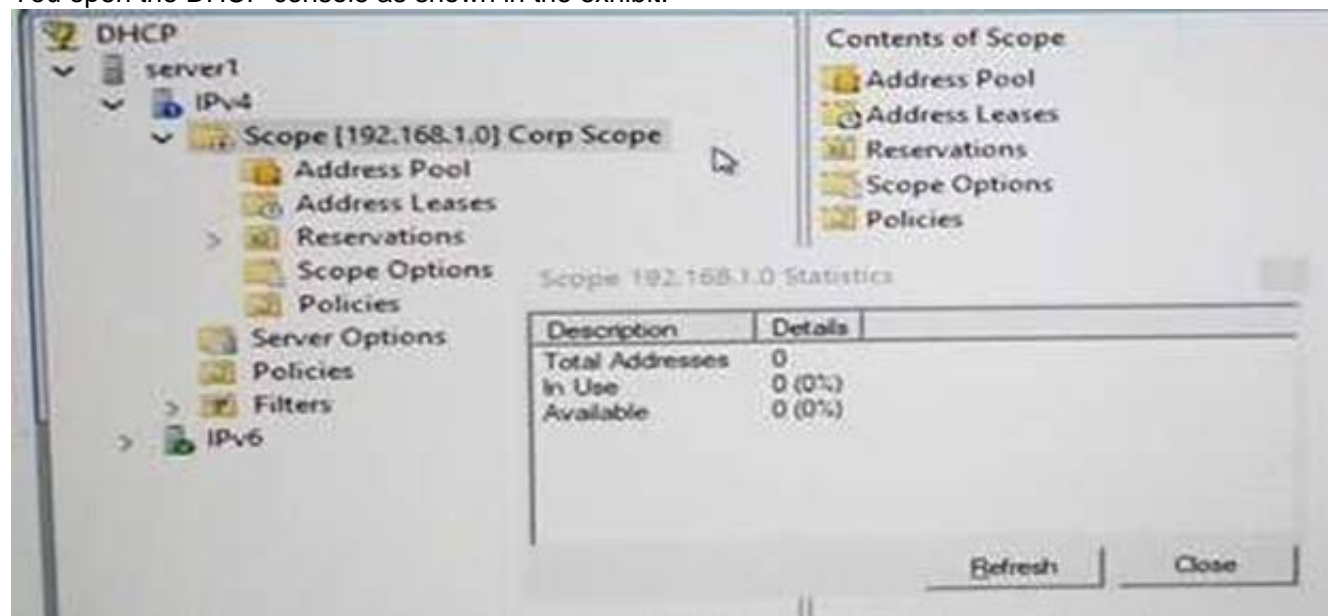
Note: This question is part of a series of questions that present the same scenario. Each question in the series contains a unique solution that might meet the stated goals. Some question sets might have more than one correct solution, while others might not have a correct solution.

After you answer a question in this sections, you will NOT be able to return to it. As a result, these questions will not appear in the review screen.

You network contains an Active Directory domain named contoso.com. The domain contains a DHCP server named Server1. All client computers run Windows 10 and are configured as DHCP clients.

Your helpdesk received calls today from users who failed to access the network from their Windows 10 computer.

You open the DHCP console as shown in the exhibit.



You need to ensure that all of the Windows 10 computers can receive a DHCP lease.

Solution: You authorize the server. Does this meet the goal?

- A. Yes
- B. No

**Answer: B**

#### NEW QUESTION 21

You have two servers named Server1 and Server2 that run Windows Server 2016. Both servers have the DHCP Server server role installed.

Server1 has a DHCP scope named Scope1. Server2 has a DHCP scope named Scope2.

You need to ensure that client computers can get an IP address if a single DHCP server fails. You must be able to control the percentage of requests to which each DHCP server responds during normal network operations.

What should you do?

- A. Add Server1 and Server2 as nodes in a failover cluster, and then configure the DHCP Server server role.
- B. Add Server1 and Server2 as nodes in a failover cluster, and then configure the quorum mode.
- C. On Server1 and Server2, configure DHCP failover for Scope1 and Scope2.
- D. Add Server1 and Server2 as nodes in a failover cluster, and then configure port rules for UDP 67 and UDP 68.

**Answer: C**

#### NEW QUESTION 22

You company has a main office in London. The company has 1,000 users who are located in many countries. You plan to deploy a large remote access solution for the company.

The London office has three servers named Server1, Server2, and Server3 that run Windows Server 2016. You plan to use Server1 as a VPN server, Server2 as a RADIUS proxy, and Server3 as a RADIUS server. You need to configure Server2 to support the planned deployment.

Which three actions should you perform on Server2? Each correct answer presents part of the solution.

- A. Create a connection request policy.
- B. Deploy a Windows container.
- C. Add a RADIUS client.
- D. Create a network policy.
- E. Create a remote RADIUS server group.

**Answer: ACE**

#### Explanation:

<https://ittrainingday.com/2014/01/03/how-to-configure-radius-proxy-servers/>

#### NEW QUESTION 24

You have a DHCP server named Server1 that runs Windows Server 2016. You have a single IP subnet.

Server1 has an IPv4 scope named Scope1. Scope1 has an IP address range of 10.0.1.10 to 10.0.1.200 and a length of 24 bits.

You need to create a second logical IP network on the subnet. The subnet will use an IP address range of 10.1.2.10 to 10.0.2.200 and a length of 24 bits.

What should you do?

- A. Create a second scope, and then create a superscope.
- B. Create a superscope, and then configure an exclusion range in Scope1.
- C. Create a new scope, and then modify the IPv4 bindings.
- D. Create a second scope, and then run the DHCP Split-Scope Configuration Wizard.

**Answer: A**

#### NEW QUESTION 28

You have a test environment that includes two servers named Server1 and Server2. The servers run Windows Server 2016. You need to ensure that you can implement SMB Direct between the servers. Which feature should the servers support?



- A. (RDMA)
- B. Multipath I/O (MPIO)
- C. virtual machine queue (VMQ)
- D. single root I/O virtualization (SR-IOV)

**Answer:** A

**Explanation:**

<https://technet.microsoft.com/en-us/library/jj134210%28v=ws.11%29.aspx?f=255&MSPPError=-2147217396>

**NEW QUESTION 31**

You have a server named Server1 that runs Windows Server 2016 and is configured as a domain controller. You install the DNS Server server role on Server1. You plan to store a DNS zone in a custom Active Directory partition. You need to create a new Active Directory partition for the zone. What should you use?

- A. Set-DnsServer
- B. Active Directory Sites and Services
- C. Dns.exe
- D. Dnscmd.exe

**Answer:** D

**Explanation:**

[https://technet.microsoft.com/en-us/library/ee649181\(v=ws.10\).aspx](https://technet.microsoft.com/en-us/library/ee649181(v=ws.10).aspx)

**NEW QUESTION 36**

Note: This question is part of a series of questions that use the same scenario. For your convenience, the scenario is repeated in each question. Each question presents a different goal and answer choices, but the text of the scenario is exactly the same in each question in this series.

Your network contains an Active Directory domain named contoso.com. The functional level of the domain is Windows Server 2012.

The network uses an address space of 192.168.0.0/16 and contains multiple subnets. The network is not connected to the Internet.

The domain contains three servers configured as shown in the following table.

Server name	Configuration
Server1	Domain controller and DNS server
Server2	Member server
Server3	DHCP server

Client computers obtain TCP/IP settings from Server3.

You add a second network adapter to Server2. You connect the new network adapter to the Internet. You install the Routing role service on Server2.

Server1 has four DNS zones configured as shown in the following table.

DNS zone name	Type	Zone file name
Contoso.com	Active Directory-integrated	None
Fabrikam.com	Primary	Fabrikam.com.dns
Tailspintoys.com	Primary	Tailspintoys.com.dns
168.192.in-addr.arpa	Primary	168.192.in-addr.arpa.dns

What should you do to enable Server2 as a NAT server?

- A. From Routing and Remote Access, add an interface.
- B. From Windows PowerShell, run the New-RoutingGroupConnector cmdlet.
- C. From Routing and Remote Access, add a routing protocol.
- D. From Windows PowerShell, run the Install-WindowsFeature cmdlet.

**Answer:** A

**Explanation:**

[https://technet.microsoft.com/en-us/library/dd469812\(v=ws.11\).aspx](https://technet.microsoft.com/en-us/library/dd469812(v=ws.11).aspx)

**NEW QUESTION 39**

Note: This question is part of a series of questions that present the same scenario. Each question in the series contains a unique solution that might meet the stated goals. Some question sets might have more than one correct solution, while others might not have a correct solution.

After you answer a question in this section, you will NOT be able to return to it. As a result, these questions will not appear in the review screen.

You have a Hyper-V host named Server 1. The network adapters on Server1 have single root I/O virtualization (SR-IOV) enabled.

Server1 hosts a virtual machine named VM1 that runs Windows Server 2016. You need to identify whether SR-IOV is used by VM1.

Solution: You sign in to VM1. You run the Get-NetAdapterSriov cmdlet.

Does this meet the goal?

- A. Yes
- B. No

**Answer:** A

**Explanation:**

References:

<https://docs.microsoft.com/en-us/powershell/module/netadapter/get-netadaptersriov?view=win10-ps>

**NEW QUESTION 44**

You have an application named App1. App1 is distributed to multiple Hyper-V virtual machines in a multitenant environment. You need to ensure that the traffic is distributed evenly among the virtual machines that host App1. What should you include in the environment?

- A. Network Controller and Windows Server Network Load Balancing (NLB) nodes
- B. an RAS Gateway and Windows Server Software Load Balancing (SLB) nodes
- C. an RAS Gateway and Windows Server Network Load Balancing (NLB) nodes
- D. Network Controller and Windows Server Software Load Balancing (SLB) nodes

**Answer: B**

**Explanation:**

[https://technet.microsoft.com/en-us/library/mt403307\(v=ws.11\).aspx#bkmk\\_slb](https://technet.microsoft.com/en-us/library/mt403307(v=ws.11).aspx#bkmk_slb)

**NEW QUESTION 48**

You have a server named Server1 that runs Windows Server 2016. Server1 is a Hyper-V host. You have two network adapter cards on Server1 that are Remote Direct Memory Access (RDMA)-capable. You need to aggregate the bandwidth of the network adapter cards for a virtual machine on Server1. The solution must ensure that the virtual machine can use the RDMA capabilities of the network adapter cards. Which command should you run first? To answer, select the appropriate options in the answer area.

**Answer Area**

<div>▼</div> <div>Add-NetLbfoTeamNic</div> <div>Add-VmNetworkAdapter</div> <div>Add-VmSwitch</div> <div>New-NetLbfoTeam</div>	<b>-Name Production -NetAdapterName "NIC 1", "NIC 2"</b>	<div>▼</div> <div>EnableEmbeddedTeaming</div> <div>EnableIov</div> <div>EnablePacketDirect</div>
---	--	--

- A. Mastered
- B. Not Mastered

**Answer: A**

**Explanation:**

<https://technet.microsoft.com/en-us/library/mt403349.aspx>

**NEW QUESTION 51**

You install the DHCP Server role on a server1. You create a new scope on Server1. The scope properties are configured as shown in the following exhibit.

Use the drop down menus to select the answer choice that completes each statement based on the information presented in the graphics.

If a DHCP client requests an IP address from Server1, the client will [answer choice].

	▼
fail to receive an IP address	
receive an IP address of 192.168.213.1	
receive an IP address of 192.168.213.6	

If a client computer that runs Windows 10 receives an IP address from myScope, the first attempt to renew the lease will be in [answer choice] days.

	▼
two	
four	
six	
eight	

- A. Mastered  
B. Not Mastered

**Answer:** A

**Explanation:**

If a DHCP client requests an IP address from Server1, the client will [answer choice].

	▼
fail to receive an IP address	
receive an IP address of 192.168.213.1	
receive an IP address of 192.168.213.6	

If a client computer that runs Windows 10 receives an IP address from myScope, the first attempt to renew the lease will be in [answer choice] days.

	▼
two	
four	
six	
eight	

#### NEW QUESTION 56

Note: This question is part of a series of questions that present the same scenario. Each question in the series contains a unique solution that might meet the stated goals. Some questions sets might have more than one correct solutions, while others might not have a correct solution.

After you answer a question in this section, you will NOT be able to return to it. As a result, these questions will not appear in the review screen.

You have a server named Server1 that runs Windows Server 2016. Server1 is configured as a VPN server. Server1 is configured to allow domain users to establish VPN connections from 06:00 to 18:00 everyday of the week.

You need to ensure that domain users can establish VPN connections only between Monday and Friday.

Solution: From Server Manager, You modify the Access Policies on Server1.

Does this meet the goal?

- A. Yes  
B. No

**Answer:** A

#### NEW QUESTION 59

Note: This question is part of a series of questions that present the same scenario. Each question in the series contains a unique solution that might meet the stated goals. Some question sets might have more than one correct solution, while others might not have a correct solution.

After you answer a question in this sections, you will NOT be able to return to it. As a result, these questions will not appear in the review screen.

You have an IP Address Management (IPAM) server named IPAM1 that runs Windows Server 2016. IPAM1 manages all of the DHCP servers on your network.

You are troubleshooting an issue for a client that fails to receive an IP address from DHCP.

You need to ensure that from IPAM1, you can view all of the event data for the DHCP leases from the last 24 hours.

Solution: From Task Scheduler, you run the Microsoft\Windows\IPAM\Audit task. Does this meet the goal?

- A. Yes  
B. No

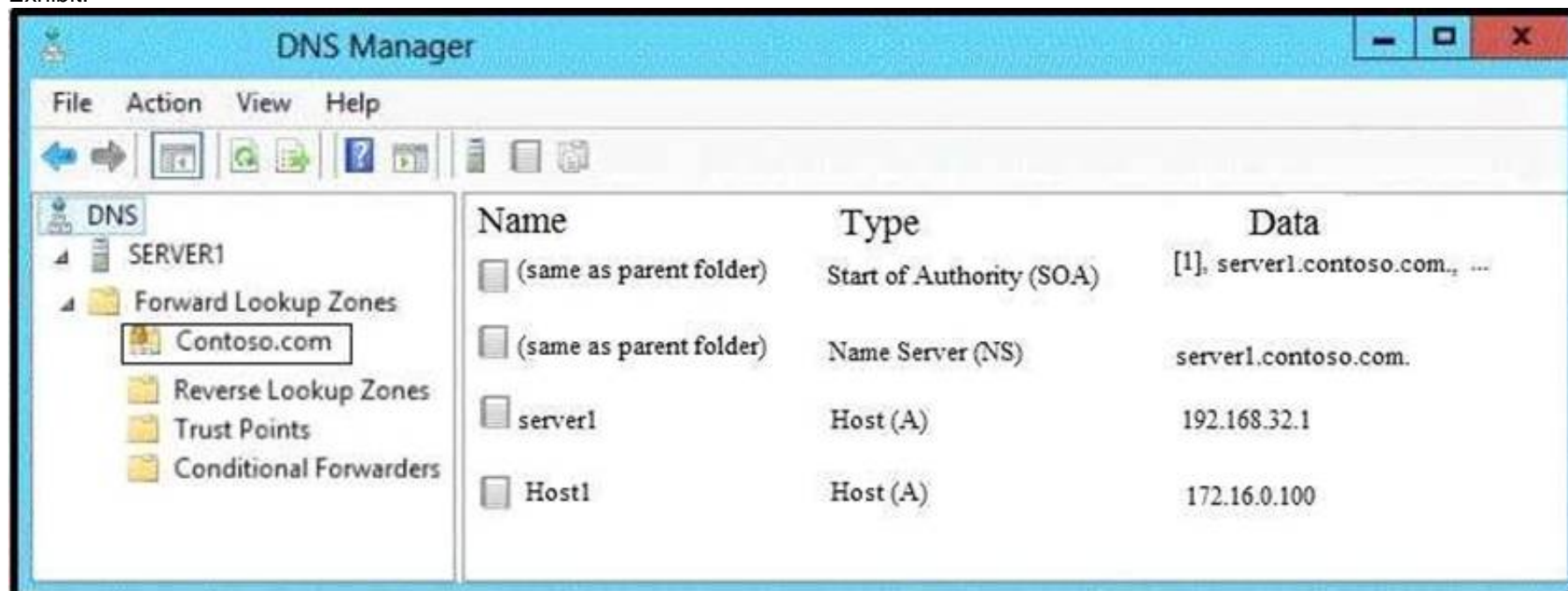


Answer: B

#### NEW QUESTION 61

You have a DNS server named Server1 that runs Windows Server 2016. Server 1 has a forward lookup scope for Contoso.com. The records in the zone are shown in the exhibit. (Click the Exhibit button.)

Exhibit:



You run the following commands on Server1.

```
Add-DnsServerClientSubnet -Name "Subnet1" -Ipv4Subnet "172.16.0.0/24"
Add-DnsServerClientSubnet -Name "Subnet2" -Ipv4Subnet "172.16.1.0/24"
Add-DnsServerZoneScope -ZoneName "Contoso.com" -Name "Scope1"
Add-DnsServerResourceRecord -ZoneName "Contoso.com" -A -Name "Host2"
-IPv4Address "172.16.99.99" -ZoneScope "Scope1"
Add-DnsServerQueryResolutionPolicy -Name "Policy1" -Action ALLOW
-ClientSubnet "EQ,Subnet1" -ZoneScope "Scope1,1" -ZoneName "Contoso.com"
Add-DnsServerQueryResolutionPolicy -Name "Policy2" -Action IGNORE
-ClientSubnet "NE,Subnet2" -FQDN "EQ,host1.contoso.com"
```

What are two results of the configuration? Each correct answer presents a complete solution. NOTE: Each correct selection is worth one point.

- A. When a client computer that has an IP address of 172.16.0.10 attempts to resolve host1.contoso.com, host1.contoso.com resolves to 172.16.99.99.
- B. When a client computer that has an IP address of 172.16.0.10 attempts to resolve host1.contoso.com, the name resolution fails to return an IP address.
- C. When a client computer that has an IP address of 172.16.1.56 attempts to resolve host1.contoso.com, host1.contoso.com resolves to 172.16.99.99.
- D. When a client computer that has an IP address of 172.16.1.56 attempts to resolve host1.contoso.com, host1.contoso.com resolves to 172.16.0.100.
- E. When a client computer that has an IP address of 172.16.1.56 attempts to resolve host1.contoso.com, the name resolution fails to return an IP address.
- F. When a client computer that has an IP address of 172.16.0.10 attempts to resolve host1.contoso.com, host1.contoso.com resolves to 172.16.0.100.

Answer: BE

#### Explanation:

References:

<https://docs.microsoft.com/en-us/powershell/module/dnsserver/add-dnsserverqueryresolutionpolicy?view=win1>

#### NEW QUESTION 64

Note: This question is part of a series of questions that present the same scenario. Each question in the series contains a unique solution that might meet the stated goals. Some question sets might have more than one correct solution, while others might not have a correct solution.

After you answer a question in this sections, you will NOT be able to return to it. As a result, these questions will not appear in the review screen.

You network contains an Active Directory domain named contoso.com. The domain contains a member server named Server1 that runs Windows Server 2016 and has the DNS Server role installed. Automatic scavenging of state records is enabled and the scavenging period is set to 10 days.

All client computers dynamically register their names in the contoso.com DNS zone on Server1.

You discover that the names of multiple client computers that were removed from the network several weeks ago can still be resolved.

You need to configure Server1 to automatically remove the records of the client computers that have been offline for more than 10 days.

Solution: You set the Expires after value of the zone. Does this meet the goal?

- A. Yes
- B. No

Answer: B

#### Explanation:

[https://technet.microsoft.com/en-us/library/cc772069\(v=ws.11\).aspx](https://technet.microsoft.com/en-us/library/cc772069(v=ws.11).aspx)

#### NEW QUESTION 65

Note: This question is part of a series of questions that present the same scenario. Each question in the series contains a unique solution that might meet the stated goals. Some questions sets might have more than one correct solutions, while others might not have a correct solution.

After you answer a question in this section, you will NOT be able to return to it. As a result, these questions will not appear in the review screen.

Your network contains an Active Directory forest named contoso.com. The forest has three sites located in London, Paris and Berlin.

The London site contains a web server named Web1 that runs Windows Server 2016.

You need to configure Web1 as an HTTP content server for the hosted cache servers located in the Paris and Berlin sites.

Solution: You install the DFS Replication role service, and then you start the Network Connections service. Does this meet the goal?

- A. Yes
- B. No

**Answer: B**

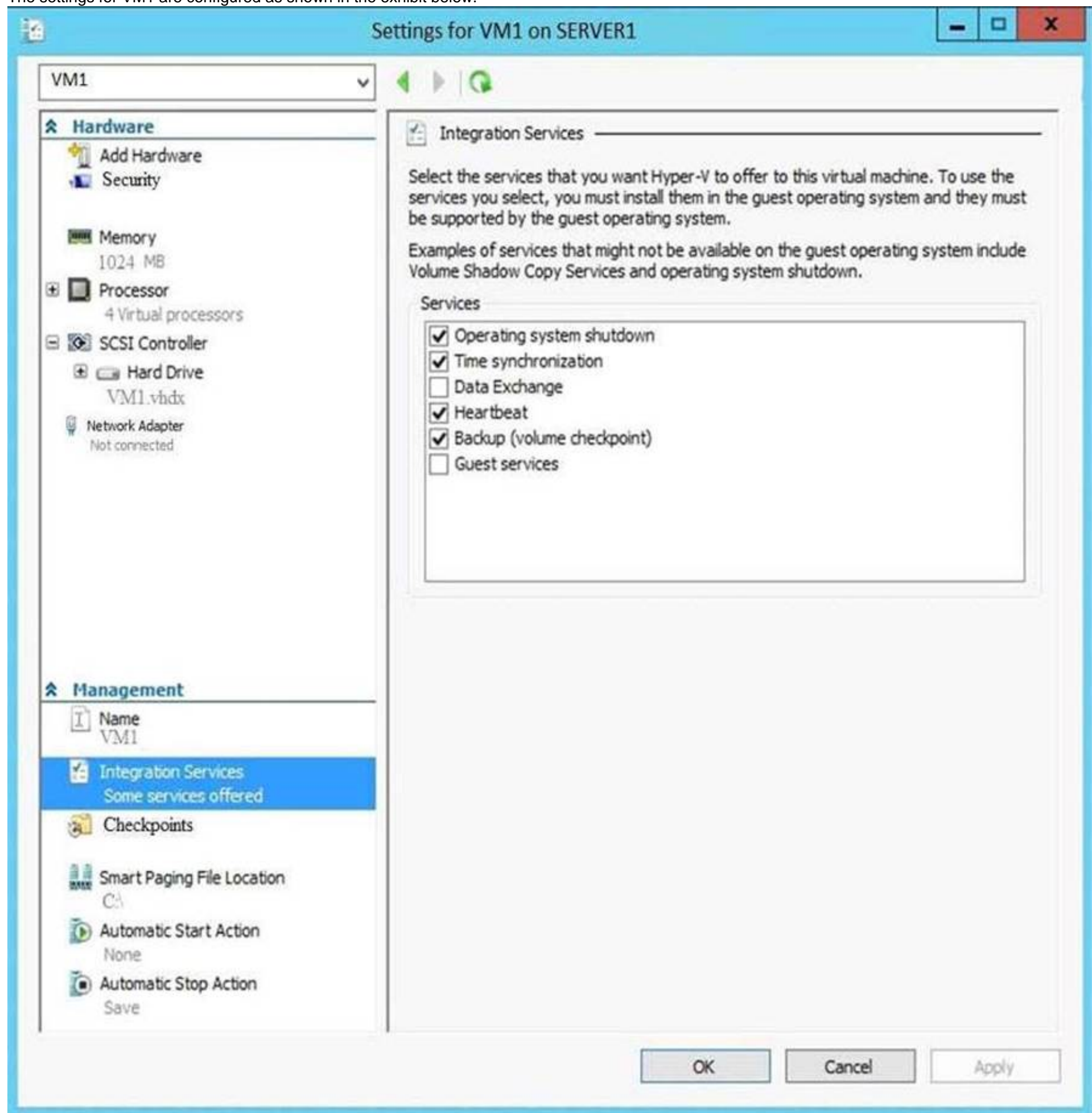
#### NEW QUESTION 69

Note: This question is part of a series of questions that present the same scenario. Each question in the series contains a unique solution that might meet the stated goals. Some question sets might have more than one correct solution, while others might not have a correct solution.

After you answer a question in this sections, you will NOT be able to return to it. As a result, these questions will not appear in the review screen.

You have a Hyper-V host named Server1 that hosts a virtual machine named VM1. Server1 and VM1 run Windows Server 2016.

The settings for VM1 are configured as shown in the exhibit below.



You need to ensure that you can use the Copy-VMFile cmdlet on Server1 to copy files from VM1.

Solution: You need to enable the Guest Service integration service for VM1. Does this meet the goal?

- A. YES
- B. NO

**Answer:** A

#### NEW QUESTION 74

You have a server named Host1 that runs Windows Server 2016.

You configure Host1 as a virtualization host and create 20 new virtual machines on Host1. You need to ensure that all of the virtual machines can connect to the Internet through Host1.

Which three actions should you perform? Each correct answer presents part of the solution.

- A. On a virtual machine, install the Remote Access server role.
- B. From the properties of each virtual machine, enable virtual LAN identification.
- C. From the properties of each virtual machine, connect to the virtual machine switch.
- D. On Host1, configure the network address translation (NAT) network.
- E. On Host1, create an internal virtual machine switch and specify an IP address for the switch.

**Answer:** CDE

#### Explanation:

[https://technet.microsoft.com/en-us/library/ee449441\(v=ws.10\).aspx](https://technet.microsoft.com/en-us/library/ee449441(v=ws.10).aspx)

#### NEW QUESTION 75

Note: This question is part of a series of questions that present the same scenario. Each question in the series contains a unique solution. Determine whether the solution meets the stated goals.

Your network contains an Active Directory domain named contoso.com. The domain contains a DNS server named Server1. All client computers run Windows 10. On Server1, you have the following zone configuration.

ZoneName	ZoneType	IsAutoCreated	IsDsIntegrated	IsReverseLookupZone	IsSigned
_nsdcs.contoso.com	Primary	False	True	False	False
0.in-addr.arpa	Primary	True	False	True	False
127.in-addr.arpa	Primary	True	False	True	False
255.in-addr.arpa	Primary	True	False	True	False
adatum.com	Forwarder	False	False	False	
contoso.com	Primary	False	True	False	False
fabrikam.com	Primary	False	True	False	True
TrustAnchors	Primary	False	True	False	False

You need to ensure that all of the client computers in the domain perform DNSSEC validation for the fabrikam.com namespace.

Solution: From a Group Policy object (GPO) in the domain, you modify the Network List Manager Policies. Does this meet the goal?

- A. Yes
- B. No

**Answer:** B

#### Explanation:

Network List Manager Policies are security settings that you can use to configure different aspects of how networks are listed and displayed on one computer or on many computers.

Network List Manager Policies are not related to DNSSEC.

References: [https://technet.microsoft.com/en-us/library/jj966256\(v=ws.11\).aspx](https://technet.microsoft.com/en-us/library/jj966256(v=ws.11).aspx)

#### NEW QUESTION 79

Your network contains multiple wireless access points (WAPs) that use WPA2-Personal authentication. The network contains an enterprise root certification authority (CA).

The security administrator at your company plans to implement WPA2-Enterprise authentication on the WAPs.

To support the authentication change, you deploy a server that has Network Policy Server (NPS) installed. You need to configure NPS to authenticate the wireless clients.

What should you do on the NPS server?

- A. Add RADIUS clients and configure network policies.
- B. Create a remote RADIUS server group and configure connection request policies.
- C. Create a remote RADIUS server group and install a server certificate.
- D. Add RADIUS clients and configure connection request policies.

**Answer:** A

#### Explanation:

<https://ittrainingday.com/2013/12/25/how-to-configure-a-windows-radius-server-for-802-1x-wireless-or-wired-c>

#### NEW QUESTION 84

You have a server named Server1 that runs Windows Server 2016. Server1 is a Hyper-V host. You run the commands shown in the following graphic:



```
Windows PowerShell
Copyright (C) 2016 Microsoft Corporation. All rights reserved.

PS C:\Users\ServerAdmin> New-VmSwitch -Name TEAM1 -NetAdapterName "NIC 1", "NIC 2" -EnableEmbeddedTeaming
PS C:\Users\ServerAdmin> Set-VmSwitch -Name TEAM1 -NetAdapterName "NIC 3"
```

Use the drop-down menus to select the answer choice that completes each statement based on the information presented in the graphic.

After running the commands, TEAM1 contains [answer choice] network adapters.

▼

one

two

three

If you run **Add-VmSwitchTeamMember-VmSwitchName TEAM1 -NetAdapterName "NIC4"**, TEAM1 will contain [answer choice] network adapters.

▼

one

two

three

four

- A. Mastered
- B. Not Mastered

Answer: A

Explanation:

After running the commands, TEAM1 contains [answer choice] network adapters.

▼

one

two

three

If you run **Add-VmSwitchTeamMember-VmSwitchName TEAM1 -NetAdapterName "NIC4"**, TEAM1 will contain [answer choice] network adapters.

▼

one

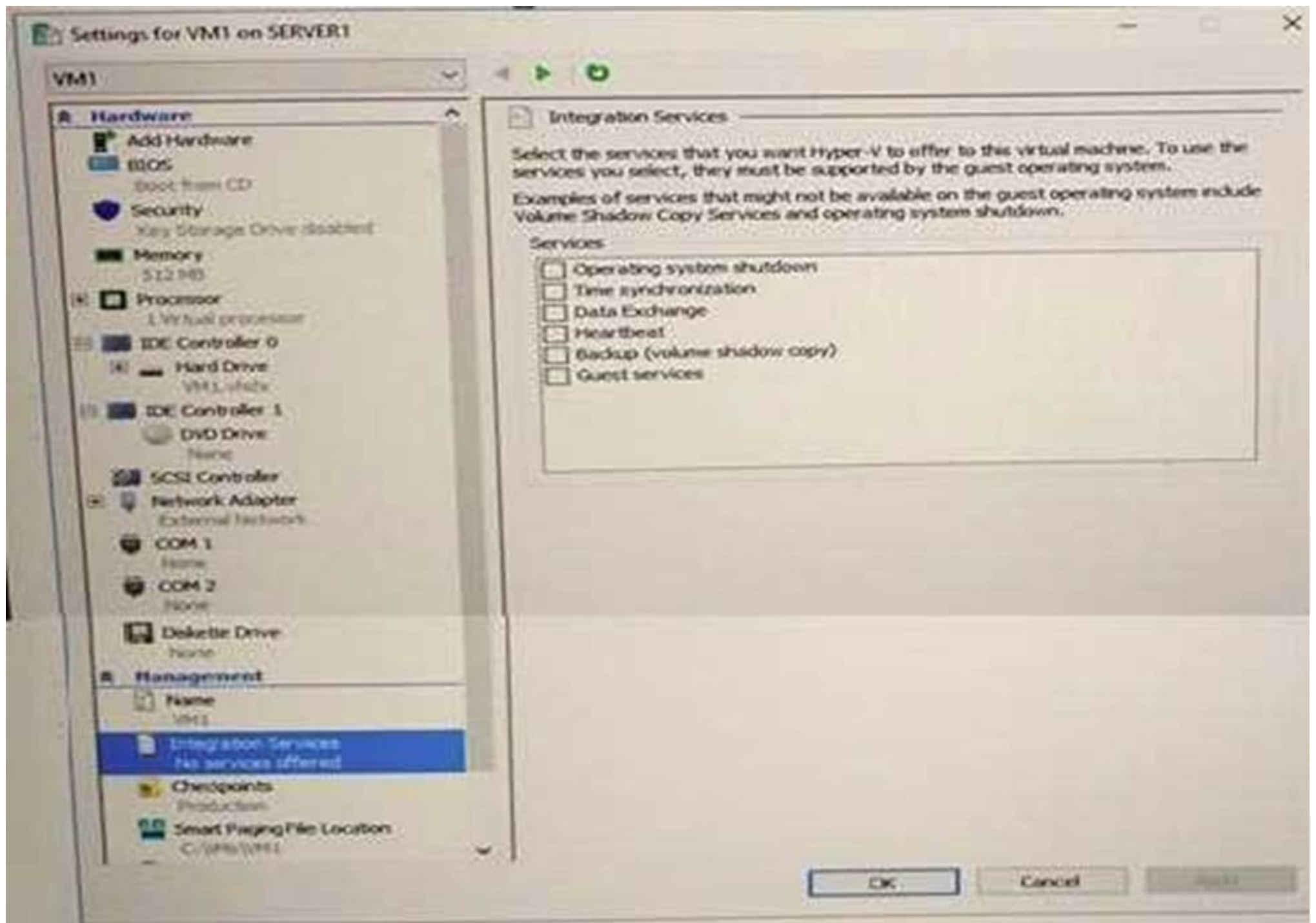
two

three

four

NEW QUESTION 88

You have a Hyper-V host named Server1 that runs Windows Server 2016. Server1 has multiple network adapters that have virtual machine queue (VMQ) enabled. On Server1, you create a virtual machine named VM1 as shown in the exhibit.



You need to ensure that you can use virtual Receive-side Scaling (vRSS) on VM1.  
What should you do?

- A. Add additional memory.
- B. Add additional processors.
- C. Add additional network adapters.
- D. Enable the Data Exchange integration service.

**Answer: B**

**Explanation:**

References: <https://docs.microsoft.com/en-us/windows-server/networking/technologies/vrss/vrss-top>

**NEW QUESTION 92**

Refer to Exhibit:

### Administrator: Windows PowerShell

```
PS C:\> Get-DfsnRoot- namespace\\ Server1.Adatum. com\Namespace1 | fl
```

```
State                : Online
Flags                : {Site Costing, AccessBased Enumeration}
Type                 : Standalone
Path                 : \\Server1.Adatum.com\ Namespace1
TimeToLiveSec        : 300
Description           :
NamespacePath         : \\Server1.Adatum.com\Namespace1
TimeToLive            : 300
GrantAdminAccess      : {BUILTIN\Administrators, NT AUTHORITY\SYSTEM}
PSComputerName         :
CimClass              : ROOT/Microsoft/Windows/dfs: MSFT_DFSNamespace
CimInstanceProperties : {Description, Flags, NamespacePath, State...}
CimSystemProperties    : Microsoft.Management.Infrastructure.CimSystemProperties
```

```
PS C:\>
```

\\Server1.adatum.com\namespace1 has a folder target named Folder1. A user named User1 has Full Control share and NTFS permissions to Folder1. Folder1 contains a file named File1.doc. User1 has only Write NTFS permissions to File1.doc. Use the drop-down menus to select the answer choice that completes each statement based on the information presented in the graphic.

When you want to provide redundancy for the DFS namespace on Server1, you must [answer choice].

	▼
implement DFS Replication	
implement Failover Clustering	
install an additional domain controller	

User1 will be [answer choice].

	▼
Able to see File1.doc in File Explorer and will be able to open the file	
Able to see File1.doc in File Explorer and will be prevented from opening the file	
Prevented from seeing File1.doc in File Explorer but will be able to delete the file	

- A. Mastered
- B. Not Mastered

**Answer:** A

**Explanation:**



When you want to provide redundancy for the DFS namespace on Server1, you must [answer choice].

- implement DFS Replication
- implement Failover Clustering
- install an additional domain controller

User1 will be [answer choice].

- Able to see File1.doc in File Explorer and will be able to open the file
- Able to see File1.doc in File Explorer and will be prevented from opening the file
- Prevented from seeing File1.doc in File Explorer but will be able to delete the file

#### NEW QUESTION 94

You have a server named Server1 that runs Windows Server 2016. You install the DHCP Server server role on Server1. You need to authorize DHCP on Server1. What should you run?

- A. dism.exe
- B. dns.exe
- C. dnscmd.exe
- D. netsh.exe
- E. Set-DhcpServerDatabase
- F. Set-DhcpServerv4DnsSetting
- G. Set-DhcpServerv6DnsSetting
- H. Set-DNSServerSetting

**Answer: D**

#### NEW QUESTION 96

Note: This question is part of a series of questions that use the same scenario. For your convenience, the scenario is repeated in each question. Each question presents a different goal and answer choices, but the text of the scenario is exactly the same in each question in this series.

Your network contains an Active Directory domain named contoso.com. The functional level of the domain is Windows Server 2012.

The network uses an address space of 192.168.0.0/16 and contains multiple subnets. The network is not connected to the Internet.

The domain contains three servers configured as shown in the following table.

Server name	Configuration
Server1	Domain controller and DNS server
Server2	Member server
Server3	DHCP server

Client computers obtain TCP/IP settings from Server3.

You add a second network adapter to Server2. You connect the new network adapter to the Internet. You install the Routing role service on Server2.

Server1 has four DNS zones configured as shown in the following table.

DNS zone name	Type	Zone file name
Contoso.com	Active Directory-integrated	None
Fabrikam.com	Primary	Fabrikam.com.dns
Tailspintoys.com	Primary	Tailspintoys.com.dns
168.192.in-addr.arpa	Primary	168.192.in-addr.arpa.dns

You need to ensure that when a computer is removed from the network, the associated records are deleted automatically after 15 days.

Which two actions should you perform? Each correct answer presents part of the solution.

- A. Create a scheduled task that runs the Remove-Computer cmdlet.
- B. Modify the Zone Aging/Scavenging Properties of the zone.
- C. Modify the Time to live (TTL) value of the start of authority (SOA) record.
- D. Set the Scavenging period of Server1.
- E. Modify the Expires after value of the start of authority (SOA) record.

**Answer: BD**

#### Explanation:

[https://technet.microsoft.com/en-us/library/cc771362\(v=ws.10\).aspx](https://technet.microsoft.com/en-us/library/cc771362(v=ws.10).aspx)

**NEW QUESTION 99**

You are implementing a secure network. The network contains a DHCP server named Server1 that runs Windows Server 2016. You create a DHCP allow filter that contains all of the computers on the network that are authorized to receive IP addresses. You discover that unauthorized computers can obtain an IP address from Server1. You need to ensure that only authorized computers can receive an IP address from Server1. Solution: You run the following command. Add-DHCPServer4Filter -ComputerName Server1 -MacAddress -List Deny Does this meet the goal?

- A. Yes
- B. No

**Answer: B**

**Explanation:**

References:

<https://docs.microsoft.com/en-us/powershell/module/dhcpserver/add-dhcpserverv4filter?view=win10-ps>

**NEW QUESTION 103**

You have a DNS server named Server1 that runs Windows Server 2016. Server1 has an Active Directory-integrated zone named adatum.com. All client computers run Windows 10. You recently encountered unexpected responses to DNS client queries in the adatum.com zone. You need to log all the records written to the zone. Which cmdlet should you run?

- A. Set-DnsServerDsSetting
- B. Set-DnsServerDiagnostics
- C. Set-DnsServer
- D. Add-DnsServerQueryResolutionPolicy

**Answer: B**

**NEW QUESTION 104**

Note: This question is part of a series of questions that use the same scenario. For your convenience, the scenario is repeated in each question. Each question presents a different goal and answer choices, but the text of the scenario is exactly the same in each question in this series.

Start of the repeated scenario

Your network contains an Active Directory domain named contoso.com. The functional level of the domain is Windows Server 2012.

The network uses an address space of 192.168.0.0/16 and contains multiple subnets. The network is not connected to the Internet.

The domain contains three servers configured as shown in the following table.

Server name	Configuration
Server1	Domain controller and DNS server
Server2	Member server
Server3	DHCP server

Client computers obtain TCP/IP settings from Server3.

You add a second network adapter to Server2. You connect the new network adapter to the Internet. You install the Routing role service on Server2.

Server1 has four DNS zones configured as shown in the following table.

DNS zone name	Type	Zone file name
Contoso.com	Active Directory-integrated	None
Fabrikam.com	Primary	Fabrikam.com.dns
Tailspintoys.com	Primary	Tailspintoys.com.dns
168.192.in-addr.arpa	Primary	168.192.in-addr.arpa.dns

End of the repeated scenario

You need to ensure that when computers query for records in tailspintoys.com, the query results are based on the subnet of the computer that generates the query.

What should you do?

- A. Enable DNS round robin.
- B. Configure DNS policies.
- C. Create zone delegation records.
- D. Modify the Priority settings of each resource record.

**Answer: B**

**NEW QUESTION 107**

Note: This question is part of a series of questions that present the same scenario. Each question in the series contains a unique solution that might meet the stated goals. Some question sets might have more than one correct solution, while others might not have a correct solution.

After you answer a question in this sections, you will NOT be able to return to it. As a result, these questions will not appear in the review screen.

Your network contains an Active Directory domain named adatum.com. The domain contains two DHCP servers named Server1 and Server2.

Server1 has the following IP configuration.

```
PS C:\> Get-DhcpServerv4Scope | fl ScopeId, SubnetMask, StartRange, EndRange, ActivatePolicies ; Get-DhcpServerSetting
```

```
ScopeId          : 172.16.0.0
SubnetMask        : 255.255.0.0
StartRange        : 172.16.0.20
EndRange          : 172.16.0.100
ActivatePolicies  : True
```

```
IsDomainJoined    : True
IsAuthorized       : False
DynamicBootp      : True
RestoreStatus     : False
ConflictDetectionAttempts : 0
NpsUnreachableAction : Full
NapEnabled        : False
ActivatePolicies  : True
```

Server2 has the following IP configuration.

```
PS C:\> Get-DhcpServerv4Scope | fl ScopeId, SubnetMask, StartRange, EndRange, ActivatePolicies ; Get-DhcpServerSetting
```

```
ScopeId          : 172.16.0.0
SubnetMask        : 255.255.0.0
StartRange        : 172.16.0.80
EndRange          : 172.16.0.150
ActivatePolicies  : True
```

```
IsDomainJoined    : True
IsAuthorized       : False
DynamicBootp      : True
RestoreStatus     : False
ConflictDetectionAttempts : 3
NpsUnreachableAction : Full
NapEnabled        : False
ActivatePolicies  : True
```

Some users report that sometimes they cannot access the network because of conflicting IP addresses. You need to configure DHCP to avoid leasing addresses that are in use already.

Solution: On Server2, you modify the ConflictDetectionAttempts value for IPv4. Does this meet the goal?

- A. Yes
- B. No

**Answer:** B

#### NEW QUESTION 111

You are configuring the network for a small branch office. Currently, the branch office does not connect directly to the Internet.

In the branch office, you deploy a new server named Server1 that has a server Core installation of Windows Server 2016. Server1 has two network adapters configured as shown in the following table.

Network adapter name	IP address	Connects to
NIC1	192.168.1.1/24	The branch office network
NIC2	131.107.10.1/29	The Internet

You plan to use Server1 to provide Internet connectivity for the branch office.

Routing and Remote Access (RRAS) is installed and configured for VPN remote access on Server1. You need to configure RRAS on Server1 to provide network address translation (NAT).

Which command or cmdlet should you use first?

- A. New-NetNat Nat1 -ExternalIPInterfaceaddressPrefix 131.107.10.1/29
- B. netsh.exe routing ip nat install
- C. route.exe add 192.168.1.1 255.255.255.0 131.107.10.1 metric 1
- D. Enable-NetNatTransitionConfiguration

**Answer:** B

#### Explanation:

References:

<https://social.technet.microsoft.com/Forums/exchange/en-US/5cd50748-af62-4d29-ab92-1a010b9a1a9f/how-to->



#### NEW QUESTION 112

You have a server named Server1 that runs Windows Server 2016. Server1 will be used as a VPN server. You need to configure Server1 to support VPN Reconnect. Which VPN protocol should you use?

- A. IKEv2
- B. L2TP
- C. PPTP
- D. SSTP

**Answer: B**

#### NEW QUESTION 115

You have two Hyper-V hosts named Server1 and Server2 that run Windows Server 2016. Server1 and Server2 are connected to the same network. On Server1 and Server2, you create an external network switch named Switch1. You have the virtual machine shown in the following table.

Virtual machine name	IP address	Subnet mask	Hyper-V host
VM1	192.168.1.16	255.255.255.0	Server1
VM2	192.168.1.32	255.255.255.0	Server2
VM3	192.168.1.48	255.255.255.0	Server2

All three virtual machines are connected to Switch1.

You need to prevent applications in VM3 from being able to capture network traffic from VM1 or VM2. The solution must ensure that VM1 retains network connectivity.

What should you do?

- A. Configure network virtualization for VM1 and VM2.
- B. Modify the subnet mask of VM1 and VM2.
- C. On Server2, configure the VLAN ID setting of Switch1.
- D. On Server2, create an external switch and connect VM3 to the switch.

**Answer: A**

#### Explanation:

<https://blogs.technet.microsoft.com/networking/2016/10/26/network-virtualization-with-ws2016-sdn/>

#### NEW QUESTION 118

Your network contains an Active Directory forest named contoso.com. The forest contains a Network Policy Server (NPS) server named Radius1 that runs Windows Server 2016.

You need to create a new connection request policy that will allow only Secure Socket Tunneling Protocol (SSTP) connections. Radius1 will manage all authentication requests.

Which NAS port type and which authentication method should you configure in the connection request policy? To answer, select the appropriate options in the answer area.

NOTE: Each correct selection is worth one point.

Authentication method:

	▼
Accept users without validating credentials	
Authenticate requests on this server	
Forward requests to remote RADIUS server group	

NAS port type:

	▼
Async (Modem)	
Cable	
Virtual (VPN)	

- A. Mastered
- B. Not Mastered

**Answer: A**

#### Explanation:

Authentication method:

	▼
Accept users without validating credentials	
Authenticate requests on this server	
Forward requests to remote RADIUS server group	

NAS port type:

	▼
Async (Modem)	
Cable	
Virtual (VPN)	

#### NEW QUESTION 122

Your network contains an Active Directory forest named contoso.com. The forest contains the VPN servers configured as shown in the following table.

VPN server name	IP address
VPN1	172.16.0.254
VPN2	172.16.1.254
VPN3	10.10.0.254

You are configuring a Network Policy Server (NPS) server named Server1. Server1 has the following RADIUS clients.

Name	: NPSCClient1
Address	: 172.16.0.254
AuthAttributeRequired	: True
SharedSecret	: Pa\$\$wOrd
VendorName	: RADIUS Standard
Enabled	: False
Name	: NPSCClient2
Address	: 172.16.1.254
AuthAttributeRequired	: False
SharedSecret	: Pa\$\$wOrd
VendorName	: RADIUS Standard
Enabled	: True
Name	: NPSCClient3
Address	: 131.107.0.10
AuthAttributeRequired	: True
SharedSecret	: Pa\$\$wOrd
VendorName	: RADIUS Standard
Enabled	: True

All three VPN servers are configured to use Server1 for RADIUS authentication. All of the users in comtoso.com are allowed to establish a VPN connection. For each of the following statements, select YES if the statement is true. Otherwise, select No.

NOTE: Each correct selection is worth one point.

Statements	Yes	No
The contoso.com users can authenticate successfully when they establish a VPN connection to VPN1.	<input type="radio"/>	<input type="radio"/>
The contoso.com users can authenticate successfully when they establish a VPN connection to VPN2.	<input type="radio"/>	<input type="radio"/>
The contoso.com users can authenticate successfully when they establish a VPN connection to VPN3.	<input type="radio"/>	<input type="radio"/>

- A. Mastered  
B. Not Mastered

**Answer:** A

**Explanation:**

References:

<https://docs.microsoft.com/en-us/windows-server/remote/remote-access/vpn/always-on-vpn/deploy/vpn-deploy->

**NEW QUESTION 126**

You have a Hyper-V host named Server1 that runs Windows Server 2016. Server1 has two network adaptors named NK1 and NIC2. Server2 has two virtual switches named vSwitch1 and vSwitch2. N1C1 connects to vSwitch1. NIC2 connects to vSwitch2  
Server1 hosts a virtual machine named VM1. VM1 has two network adapters named vmNIC1 and vmNIC1. VmNIC1 connects to vSwitch1. VmNIC2 connects to vSwitch2.

You need to create a NIC team on VM1.

What should you run on VM1? To answer, select the appropriate options in the answer area. NOTE: Each correct selection is worth one point.

\$var1 =

\$var2=

- A. Mastered  
B. Not Mastered

**Answer:** A

**Explanation:**

Name NICTEAM1 TeamMembers vmNIC1, vmNIC2 –TeamingMode \$var1 –LoadBalancingAlgorithm \$var2

**NEW QUESTION 129**

You have a DNS server named Server1 that runs Windows Server 2016. Server1 has two Active Directory-integrated zones named contoso.com and adatum.com. All client computers run Windows 10.

Server1 recently experienced millions of erroneous DNS queries causing a denial of service.

You need to reduce the likelihood that a similar attack will cause a denial of service. The solution must ensure that Server1 continues to resolve names for clients. What should you do?

- A. Sign both adatum.com and contoso.com zones.  
B. Implement DNS-based Authentication of named Entities (DANS).  
C. Configure DNS policies on Server1.  
D. Enable Response Rate Limiting (RRL) on Server1.

**Answer:** D

**NEW QUESTION 131**



You have a virtual machine named VM1 that runs Windows Server 2016, VM1 hosts a service that requires high network throughput. VM1 has a virtual network adapter that connects to a Hyper-V switch named vSwitch1. vSwitch1 has one network adapter. The network adapter supports Remote Direct Memory Access (RDMA), the single root I/O virtualization (SR-IOV) interface, Quality of Service? (QoS), and Receive Side Scaling (RSS). You need to ensure that the traffic from VM1 can be processed by multiple networking processors. Which Windows PowerShell command should you run on the host of VM1?

- A. Set-NetAdapterRss
- B. Set-NetAdapterRdma
- C. Set-NetAdapterQos
- D. Set-NetAdapterSriov

**Answer:** A

#### NEW QUESTION 136

Note: This question is part of a series of questions that present the same scenario. Each question in the series contains a unique solution that might meet the stated goals. Some question sets might have more than one correct solution, while others might not have a correct solution.

After you answer a question in this sections, you will NOT be able to return to it. As a result, these questions will not appear in the review screen.

Your network contains an Active Directory domain named adatum.com. The domain contains two DHCP servers named Server1 and Server2.

Server1 has the following IP configuration.

```
PS C:\> Get-DhcpServerv4Scope | fl ScopeId, SubnetMask, StartRange, EndRange,
ActivatePolicies ; Get-DhcpServerSetting
```

```
ScopeId           : 172.16.0.0
SubnetMask         : 255.255.0.0
StartRange         : 172.16.0.20
EndRange           : 172.16.0.100
ActivatePolicies   : True
```

```
IsDomainJoined     : True
IsAuthorized        : False
DynamicBootp        : True
RestoreStatus       : False
ConflictDetectionAttempts : 0
NpsUnreachableAction : Full
NapEnabled          : False
ActivatePolicies    : True
```

Server2 has the following IP configuration.

```
PS C:\> Get-DhcpServerv4Scope | fl ScopeId, SubnetMask, StartRange, EndRange,
```

```
ActivatePolicies ; Get-DhcpServerSetting
```

```
ScopeId           : 172.16.0.0
SubnetMask         : 255.255.0.0
StartRange         : 172.16.0.80
EndRange           : 172.16.0.150
ActivatePolicies   : True
```

```
IsDomainJoined     : True
IsAuthorized        : False
DynamicBootp        : True
RestoreStatus       : False
ConflictDetectionAttempts : 3
NpsUnreachableAction : Full
NapEnabled          : False
ActivatePolicies    : True
```

Some users report that sometimes they cannot access the network because of conflicting IP addresses. You need to configure DHCP to avoid leasing addresses that are in use already.

Solution: On Server2, you modify the StartRange IP address of the scope. Does this meet the goal?

- A. Yes
- B. No

**Answer:** A

#### NEW QUESTION 138

You have a virtual machine named Server1 that runs Windows Server 2016.  
You plan to use Server1 as part of a Software Defined Networking (SDN) solution.  
You need to implement the Border Gateway Protocol (BGP) on Server1. What should you install?

- A. the peer Name Resolution Protocol (PNRP)feature
- B. the Routing role service
- C. the Network Device Enrollment Service role service
- D. the Network Policy and access Services server role

**Answer: B**

#### Explanation:

References:

<https://docs.microsoft.com/en-us/windows-server/remote/remote-access/bgp/border-gateway-protocol-bgp>

#### NEW QUESTION 140

Note: This question is part of a series of questions that present the same scenario. Each question in the series contains a unique solution. Determine whether the solution meets the stated goals.

Refer to exhibit:

Private1	Private
Internal1	Internal
External1	External

Server1 has two virtual machines named VM1 and VM that run Windows Server 2016. VM1 connects to Private1. VM2 has two network adapters.

You need to ensure that VM1 connects to the corporate network by using NAT.

Solution: You connect VM2 to Private1 and External1. You install the Remote Access server on VM2, and you configure NAT in the Routing and Remote Access console. You configure VM1 and VM2 as the default gateway.

Does this meet the goal?

- A. Yes
- B. No

**Answer: B**

#### NEW QUESTION 144

You have a DNS server named Server1 that runs Windows Server 2016. Server1 has network interfaces that have the following IP addresses:  
-10.0.0.100  
-131.107.0.100

The internal network uses an IP address space of 10.0.0.0/16.

Server1 provides DNS name resolution to both internal and external clients. Server1 hosts the primary zone for contoso.com.

You need to configure Server1 to meet the following requirements:

- \* Internal clients must be able to use Server 1 to resolve internal-based DNS names.
- \* External clients must not be able to use Server1 to resolve Internal-based DNS names.
- \* External clients must able to use Server1 to resolve names in the contoso.com zone.

Which commands should you run on Server1.? To answer select the appropriate option in answer area.

Add-DnsServerRecursionScope

▼

-Name. -EnableRecursion \$false

-Name 'scope1' -EnableRecusrion \$true

Set-DnsServerRecursionScope

▼

-Name. -EnableRecursion \$false

-Name 'scope1' -EnableRecusrion \$true

Add-DnsServerQueryResolutionPolicy -Name 'policy1' -Action ALLOW

-ApplyOnRecursion -RecursionScope 'scope1'

▼

-ClientSubnet 'EQ, internal'

-ServerInterfaceIP 'EQ.10.0.0.100'

-ServerInterfaceIP 'EQ.131.107.0.100'

- A. Mastered
- B. Not Mastered

**Answer: A**

#### Explanation:

The Leader of IT Certification

visit - <https://www.certleader.com>

Add-DnsServerRecursionScope

-Name. -EnableRecursion \$false
-Name 'scope1' -EnableRecursion \$true

Set-DnsServerRecursionScope

-Name. -EnableRecursion \$false
-Name 'scope1' -EnableRecursion \$true

Add-DnsServerQueryResolutionPolicy -Name 'policy1' -Action ALLOW

-ApplyOnRecursion -RecursionScope 'scope1'

-ClientSubnet 'EQ, internal'
-ServerInterfaceIP 'EQ.10.0.0.100'
-ServerInterfaceIP 'EQ.131.107.0.100'

#### NEW QUESTION 147

Note: This question is part of a series of questions that use the same or similar answer choices. An answer choice may be correct for more than one question in the series. Each question is independent of the other questions in this series. Information and details provided in a question apply only to that question. Your network contains an Active Directory domain named contoso.com. The domain contains a server named Server2 that runs Windows Server 2016. The DHCP Server server role is installed on Server2. The DNS server role is installed on a server named Server3. The network contains 500 non-Windows devices that are registered in the DNS zone of contoso.com. You configure Server2 to lease IP addresses to the non-Windows devices. You need to prevent Server2 from overwriting the host (A) records for the non-Windows devices. What should you run?

- A. dns.exe
- B. dnscmd.exe
- C. netsh.exe
- D. Set-DhcpServerDatabase
- E. Set-DhcpServerv4DnsSetting
- F. Set-DhcpServerv6DnsSetting
- G. Set-DNSServerSetting

**Answer: C**

#### Explanation:

References:

<https://docs.microsoft.com/en-us/windows-server/administration/windows-commands/dnscmd>

#### NEW QUESTION 151

Note: This question is part of a series of questions that present the same scenario. Each question in the series contains a unique solution that might meet the stated goals. Some question sets might have more than one correct solution, while others might not have a correct solution. After you answer a question in this sections, you will NOT be able to return to it. As a result, these questions will not appear in the review screen.

Your network contains an Active Directory domain named contoso.com

You need to create a Nano Server image named Nano1 that will be used as a virtualization host. The windows server 2016 source files are located in drive D.

Solution: You run the following cmdlet.

```
New-NanoServerImage -Edition Datacenter -DeploymentType Host -Package
Microsoft-NanoServerSCVMM-Package -MediaPath 'D:\' -TargetPath C:\nano1\Nano1.wim
-ComputerName Nano1 -Domainname Contoso.com
```

Does this meet the goal?

- A. Yes
- B. NO

**Answer: B**

#### NEW QUESTION 154

You need to implement network virtualization.

On which object should you configure the virtual subnet ID?

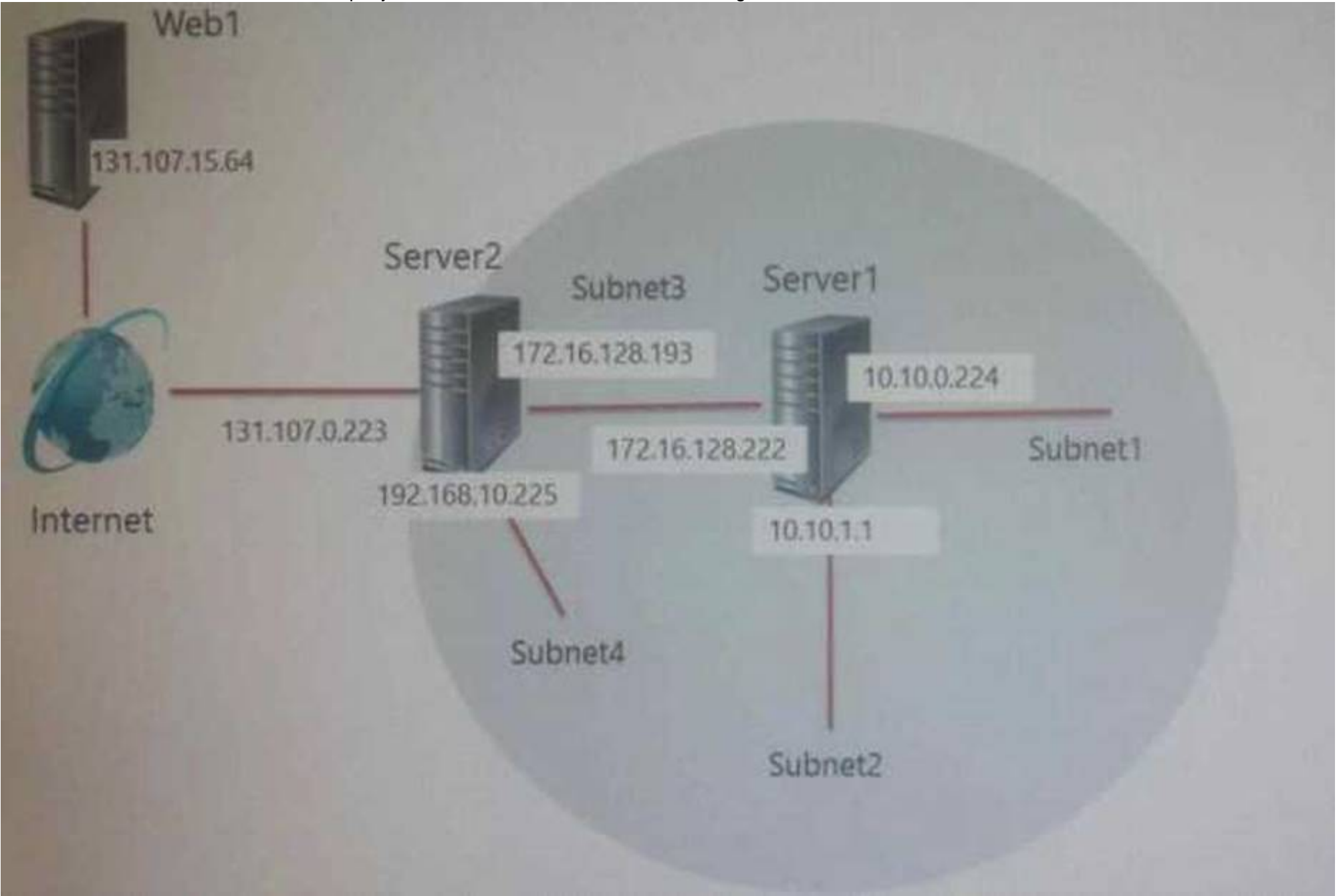
- A. Virtual switch
- B. Hyper-V server
- C. VM
- D. Virtual network adapter

**Answer: D**

#### NEW QUESTION 157



Scenario:  
You are a network administrator for a company named Contoso,Ltd. The network is configured as shown in the exhibit.



You install the Remote Access server role on Server2. Server2 has the following configured.

- \*Network address translation (NAT)
- \*The DHCP Server server role

The Security Policy of Contoso states that only TCP ports 80 and 443 are allowed from the internet to server2 You identify the following requirements:

- \* Add 28 devices to subnet2 for a temporary project.
- \* Configure Server2 to accept VPN connections from the internet.
- \* Ensure that devices on Subnet2 obtain TCP/IP settings from DHCP on Server2.

End of Scenario:  
You need to identify which subnet mask you must use for subnet2. The solution must minimize the number of available IP addresses on Subnet2.  
What subnet mask should you identify? To answer, select the appropriate options in the answer area.

255.255.

	▼
128	
192	
224	
240	
248	
252	
254	
255	

.

	▼
0	
128	
192	
224	
240	
248	
252	
254	

- A. Mastered
- B. Not Mastered

Answer: A

Explanation:

255.255.

▼

128

192

224

240

248

252

254

255

.

▼

0

128

192

224

240

248

252

254

**NEW QUESTION 162**  
You have an Active Directory domain that contains several Hyper-V hosts that run Windows Server 2016. You plan to deploy network virtualization and to centrally manage Datacenter Firewall policies.  
Which component must you install for the planned deployment?

A. the Data Center Bridging feature

B. the Network Controller server role

C. the Routing role service

D. the Canary Network Diagnostics feature

**Answer:** B  
  
**Explanation:**  
[https://technet.microsoft.com/en-us/library/mt403307\(v=ws.11\).aspx#bkmk\\_slb](https://technet.microsoft.com/en-us/library/mt403307(v=ws.11).aspx#bkmk_slb)

**NEW QUESTION 165**  
.....

## Thank You for Trying Our Product

\* 100% Pass or Money Back

All our products come with a 90-day Money Back Guarantee.

\* One year free update

You can enjoy free update one year. 24x7 online support.

\* Trusted by Millions

We currently serve more than 30,000,000 customers.

\* Shop Securely

All transactions are protected by VeriSign!

**100% Pass Your 70-741 Exam with Our Prep Materials Via below:**

<https://www.certleader.com/70-741-dumps.html>