

## 98-367 Dumps

### MTA Security Fundamentals Practice Test

<https://www.certleader.com/98-367-dumps.html>



#### NEW QUESTION 1

You are an intern at Wide World Importers and help manage 1000 workstations. All the workstations are members of an Active Domain. You need to push out an internal certificate to Internet Explorer on all workstations. What is the quickest method to do this?

- A. Local policy
- B. Logon script
- C. Windows Update
- D. Group policy

**Answer:** A

#### NEW QUESTION 2

Which type of firewall allows for inspection of all characteristics of a packet?

- A. NAT
- B. Stateful
- C. Stateless
- D. Windows Defender

**Answer:** B

#### Explanation:

Reference: [http://en.wikipedia.org/wiki/Stateful\\_firewall](http://en.wikipedia.org/wiki/Stateful_firewall)

#### NEW QUESTION 3

The Active Directory controls, enforces, and assigns security policies and access rights for all users.

Select the correct answer if the underlined text does not make the statement correct. Select "No change is needed" if the underlined text makes the statement correct.

- A. NTFS permissions
- B. User Account Control
- C. Registry
- D. No change is needed

**Answer:** D

#### NEW QUESTION 4

HOTSPOT

For each of the following statements, select Yes if the statement is true. Otherwise, select No. Each correct selection is worth one point.

#### Answer Area

	Yes	No
Honey pots are primarily used to attract potential attackers or hackers.	<input type="radio"/>	<input type="radio"/>
By setting up a honey pot, an administrator can get insightful information about the attacker, such as the IP address.	<input type="radio"/>	<input type="radio"/>
A honey pot is an appliance or piece of software that allows or denies network access based on a preconfigured set of rules.	<input type="radio"/>	<input type="radio"/>

- A. Mastered
- B. Not Mastered

**Answer:** A

#### Explanation:

## Answer Area

	Yes	No
Honey pots are primarily used to attract potential attackers or hackers.	<input checked="" type="radio"/>	<input type="radio"/>
By setting up a honey pot, an administrator can get insightful information about the attacker, such as the IP address.	<input checked="" type="radio"/>	<input type="radio"/>
A honey pot is an appliance or piece of software that allows or denies network access based on a preconfigured set of rules.	<input type="radio"/>	<input checked="" type="radio"/>

### NEW QUESTION 5

Dumpster diving refers to a physical threat that a hacker might use to look for information about a computer network.

Select the correct answer if the underlined text does not make the statement correct. Select "No change is needed" if the underlined text makes the statement correct.

- A. Phishing
- B. Malware
- C. Reverse Social engineering
- D. No change is needed

**Answer:** D

### NEW QUESTION 6

The primary purpose of Network Access Protection (NAP) is to prevent:

- A. Loss of data from client computers on a network.
- B. Non-compliant systems from connecting to a network.
- C. Users on a network from installing software.
- D. Unauthorized users from accessing a network.

**Answer:** B

#### Explanation:

NAP enforces health policies by inspecting and assessing the health of client computers, restricting network access when client computers are noncompliant with health policy, and remediating noncompliant client computers to bring them into compliance with health policy before they are granted full network access. NAP enforces health policies on client computers that are attempting to connect to a network; NAP also provides ongoing health compliance enforcement while a client computer is connected to a network. Reference: [http://technet.microsoft.com/en-us/library/cc754378\(v=ws.10\).aspx](http://technet.microsoft.com/en-us/library/cc754378(v=ws.10).aspx)

### NEW QUESTION 7

You have a Windows 7 desktop computer, and you create a Standard User account for your roommate so that he can use the desktop from time to time. Your roommate has forgotten his password.

Which two actions can you take to reset the password? (Choose two.)

- A. Use your password reset disk.
- B. Use your administrator account.
- C. Boot into Safe Mode with your roommate's account.
- D. From your roommate's account press CTRL+ALT+DELETE, and then click Change a password.

**Answer:** AB

### NEW QUESTION 8

The company that you work for wants to set up a secure network, but they do not have any servers.

Which three security methods require the use of a server? (Choose three.)

- A. 802.1x
- B. WPA2 Personal
- C. WPA2 Enterprise
- D. RADIUS
- E. 802.11ac

**Answer:** ACD

### NEW QUESTION 9

E-mail spoofing:

- A. Forwards e-mail messages to all contacts
- B. Copies e-mail messages sent from a specific user
- C. Obscures the true e-mail sender
- D. Modifies e-mail routing logs

**Answer:** C

**Explanation:**

Reference: <http://www.microsoft.com/mscorp/safety/technologies/senderid/technology.msp>x

**NEW QUESTION 10**

You are an intern at Litware, Inc. Your manager asks you to make password guess attempts harder by limiting login attempts on company computers. What should you do?

- A. Enforce password sniffing.
- B. Enforce password history.
- C. Make password complexity requirements higher.
- D. Implement account lockout policy.

**Answer:** D

**Explanation:**

Reference: <http://technet.microsoft.com/en-us/library/dd277400.aspx>

**NEW QUESTION 10**

Which enables you to change the permissions on a folder?

- A. Take ownership
- B. Extended attributes
- C. Auditing
- D. Modify

**Answer:** D

**NEW QUESTION 11**

E-mail bombing attacks a specific entity by:

- A. Redirecting all e-mail to another entity
- B. Sending high volumes of e-mail
- C. Tracing e-mail to the destination address
- D. Triggering high levels of security alerts

**Answer:** B

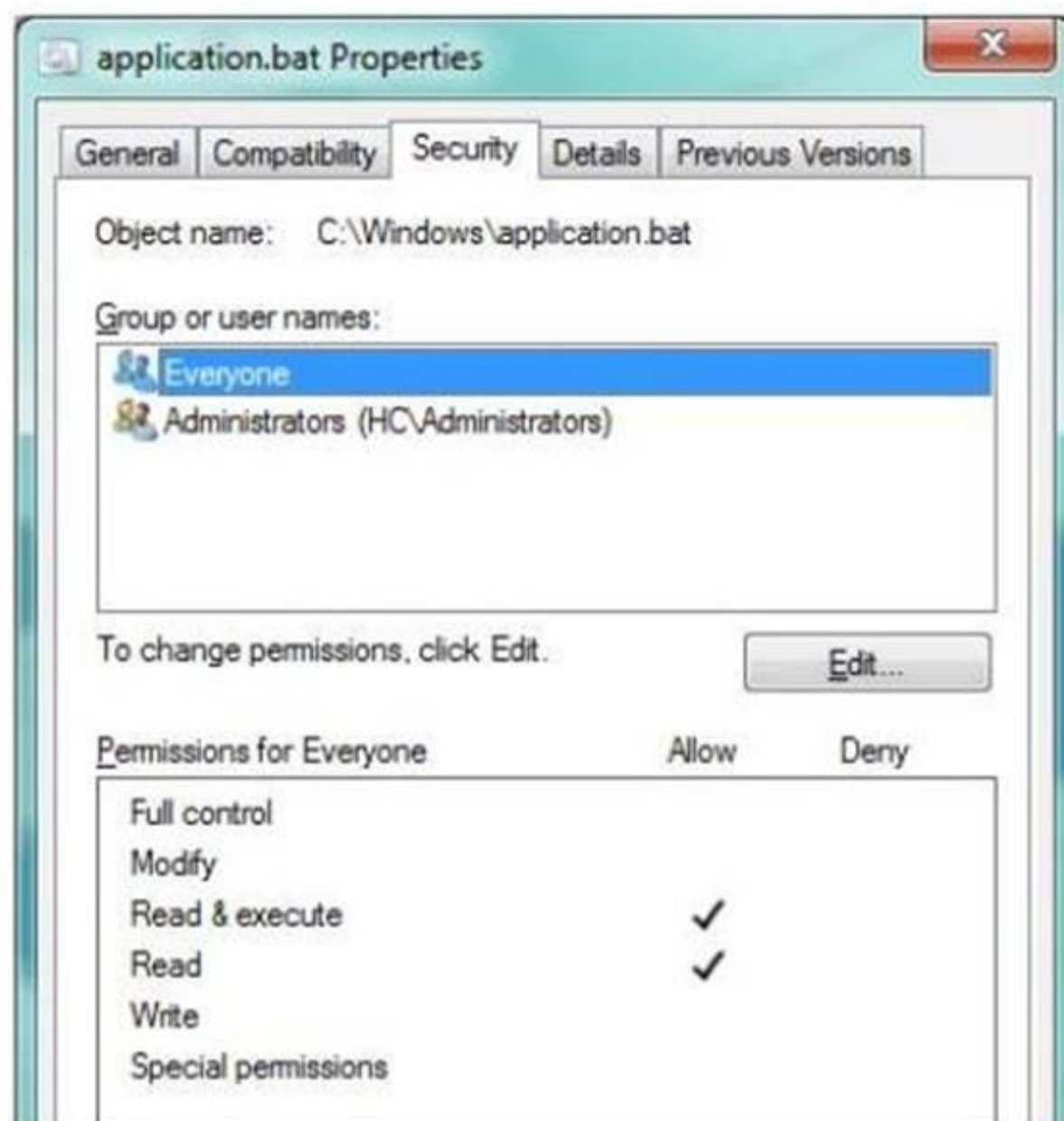
**Explanation:**

In Internet usage, an email bomb is a form of net abuse consisting of sending huge volumes of email to an address in an attempt to overflow the mailbox or overwhelm the server where the email address is hosted in a denial-of-service attack.

**NEW QUESTION 12**

HOTSPOT

Your supervisor asks you to review file permission settings on the application.bat file. You need to report which file system the file is on and the type of permission the file has. You review the application Properties dialog box shown in the following image:



Use the drop-down menus to select the answer choice that completes each statement. Each correct selection is worth one point.

## Answer Area

The "cygwin.bat" file in the image is currently on the **[answer choice]** file system.

**[answer choice]** permissions are currently being displayed for the "cygwin.bat" file.

## Answer Area

The "cygwin.bat" file in the image is currently on the **[answer choice]** file system.

  
FAT16  
FAT32  
NTFS

**[answer choice]** permissions are currently being displayed for the "cygwin.bat" file.

  
Basic  
Advanced  
Full Control

- A. Mastered
- B. Not Mastered

**Answer:** A

**Explanation:**

## Answer Area

The "cygwin.bat" file in the image is currently on the **[answer choice]** file system.

**[answer choice]** permissions are currently being displayed for the "cygwin.bat" file.

The image shows a Windows File Explorer window. The top dropdown menu for file system is open, showing FAT16, FAT32, and NTFS, with NTFS selected. The bottom dropdown menu for permissions is also open, showing Basic, Advanced, and Full Control, with Full Control selected.

### NEW QUESTION 16

Many Internet sites that you visit require a user name and password. How should you secure these passwords?

- A. Save them to a text file
- B. Enable session caching
- C. Configure the browser to save passwords
- D. Save them to an encrypted file
- E. Reuse the same password

**Answer:** D

### NEW QUESTION 19

The purpose of a digital certificate is to verify that a:

- A. Public key belongs to a sender.
- B. Computer is virus-free.
- C. Private key belongs to a sender.
- D. Digital document is complete.

**Answer:** A

#### Explanation:

In cryptography, a public key certificate (also known as a digital certificate or identity certificate) is an electronic document that uses a digital signature to bind a public key with an identity.

### NEW QUESTION 21

#### HOTSPOT

For each of the following statements, select Yes if the statement is true. Otherwise, select No. Each correct selection is worth one point.

## Answer Area

	Yes	No
FAT32 has built-in security features that control user access.	<input type="radio"/>	<input type="radio"/>
NTFS has built-in security features that control file access.	<input type="radio"/>	<input type="radio"/>
All users on the same FAT32 file system have access rights to all files.	<input type="radio"/>	<input type="radio"/>

- A. Mastered
- B. Not Mastered

**Answer:** A

#### Explanation:

## Answer Area

	Yes	No
FAT32 has built-in security features that control user access.	<input type="radio"/>	<input checked="" type="radio"/>
NFTS has built-in security features that control file access.	<input checked="" type="radio"/>	<input type="radio"/>
All users on the same FAT32 file system have access rights to all files.	<input checked="" type="radio"/>	<input type="radio"/>

### NEW QUESTION 24

Phishing is an attempt to:

- A. Obtain information by posing as a trustworthy entity.
- B. Limit access to e-mail systems by authorized users.
- C. Steal data through the use of network intrusion.
- D. Corrupt e-mail databases through the use of viruses.

**Answer:** A

#### Explanation:

Phishing is the act of attempting to acquire sensitive information such as usernames, passwords, and credit card details (and sometimes, indirectly, money) by masquerading as a trustworthy entity in an electronic communication.

### NEW QUESTION 27

What does implementing Windows Server Update Services (WSUS) allow a company to manage?

- A. Shared private encryption key updates
- B. Updates to Group Policy Objects
- C. Active Directory server replication
- D. Windows updates for workstations and servers

**Answer:** D

### NEW QUESTION 28

Before you deploy Network Access Protection (NAP), you must install:

- A. Internet Information Server (IIS)
- B. Network Policy Server (NPS)
- C. Active Directory Federation Services
- D. Windows Update Service

**Answer:** B

#### Explanation:

Reference: <http://technet.microsoft.com/en-us/library/bb681008.aspx>

### NEW QUESTION 31

The Graphic Design Institute hires you to help them set up a server for their 20-person team.

As a general practice of hardening the server, you start by performing which two tasks? (Choose two.)

- A. Disable the guest account.
- B. Rename the admin account.
- C. Remove the account lockout policy.
- D. Format partitions with FAT32.

**Answer:** AB

### NEW QUESTION 32

A network sniffer is software or hardware that:

- A. Records user activity and transmits it to the server
- B. Captures and analyzes network communication
- C. Protects workstations from intrusions
- D. Catalogs network data to create a secure index

**Answer:** B

**Explanation:**

A network sniffer is a computer tool that captures network data in the form of low-level packets. Network sniffers can be used for technical troubleshooting and analyzing the communication.

**NEW QUESTION 33**

You have two servers that run Windows Server. All drives on both servers are formatted by using NTFS. You move a file from one server to the other server. The file's permissions in the new location will:

- A. Enable full access to the everyone group
- B. Restrict access to the Administrators group
- C. Inherit the destination folder's permissions
- D. Retain the original folder's permissions

**Answer:** C

**Explanation:**

You can modify how Windows Explorer handles permissions when objects are copied or moved to another NTFS volume. When you copy or move an object to another volume, the object inherits the permissions of its new folder.

**NEW QUESTION 35**

You create a new file in a folder that has inheritance enabled. By default, the new file:

- A. Takes the permissions of the parent folder
- B. Does not take any permissions
- C. Takes the permissions of other folders in the same directory
- D. Takes the permissions of other files in the same directory

**Answer:** A

**Explanation:**

Reference:

[https://www.microsoft.com/resources/documentation/windows/xp/all/proddocs/en-us/acl\\_inherit\\_permissions.mspx?mfr=true](https://www.microsoft.com/resources/documentation/windows/xp/all/proddocs/en-us/acl_inherit_permissions.mspx?mfr=true)

**NEW QUESTION 38**

You are trying to connect to an FTP server on the Internet from a computer in a school lab. You cannot get a connection. You try on another computer with the same results. The computers in the lab are able to browse the Internet.

You are able to connect to this FTP server from home. What could be blocking the connection to the server?

- A. A layer-2 switch
- B. A wireless access point
- C. A firewall
- D. A layer-2 hub

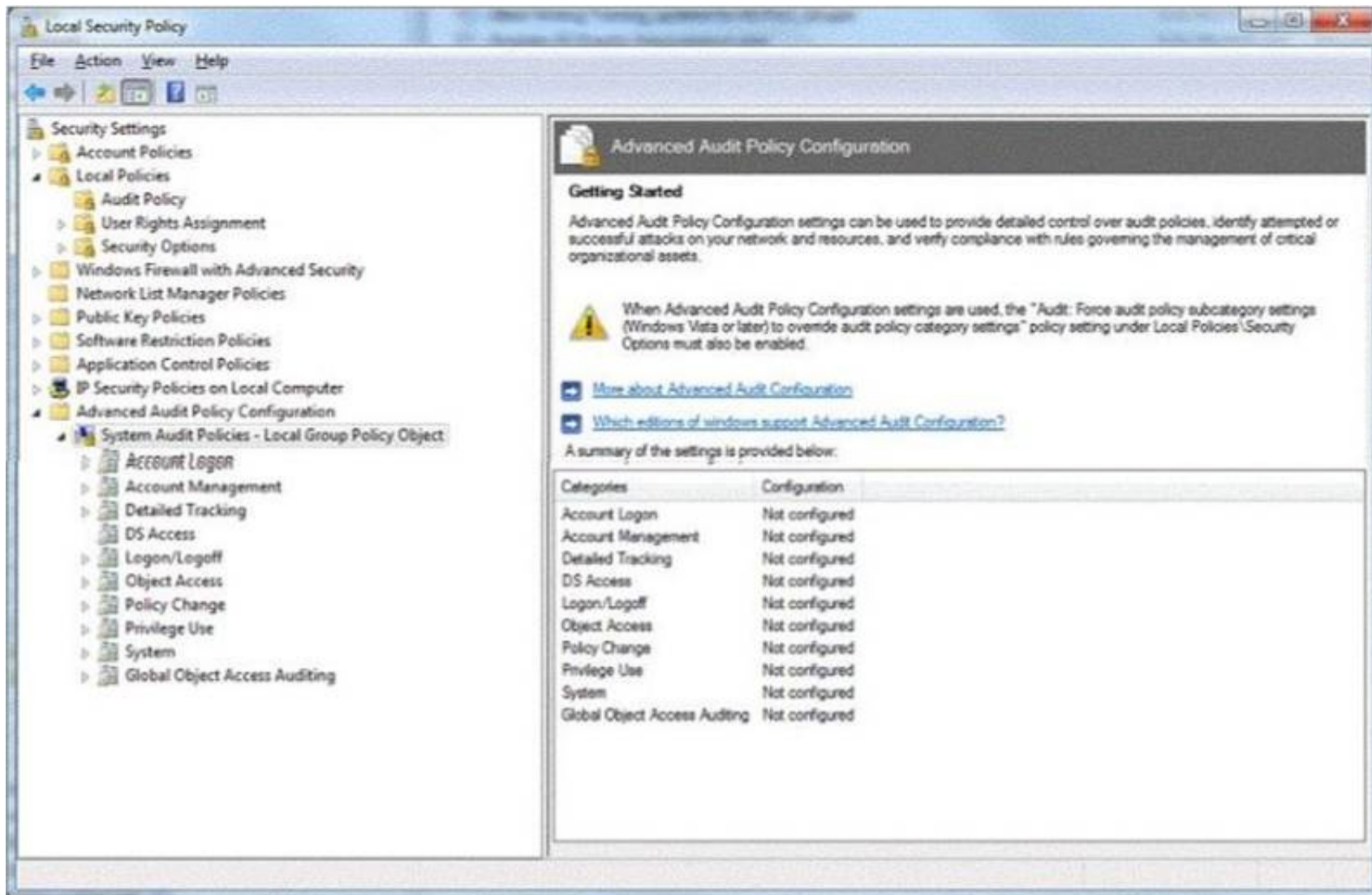
**Answer:** C

**NEW QUESTION 40**

HOTSPOT

You are preparing an audit policy for the workstations at Contoso, Ltd. Currently, no advanced auditing is enabled. The workstations are not members of the domain.

The settings of your Advanced Audit Policy Configuration are shown in the following image:



Use the drop-down menus to select the answer choice that completes each statement. Each correct selection is worth one point.

### Answer Area

To enable auditing of all local login events, you need to turn on the **[answer choice]** Advanced Audit Policy.

You need to know when someone accesses files in the c:\temp directory. Auditing is turned on for this directory. You need to enable the **[answer choice]** Advanced Audit Policy to log these events.

### Answer Area

To enable auditing of all local login events, you need to turn on the **[answer choice]** Advanced Audit Policy.

Logon/Logoff  
Account Logon  
System

You need to know when someone accesses files in the c:\temp directory. Auditing is turned on for this directory. You need to enable the **[answer choice]** Advanced Audit Policy to log these events.

Object Access  
Privilege Use  
System

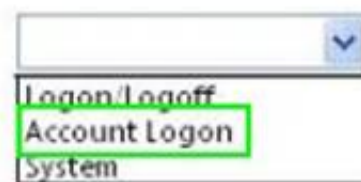
- A. Mastered
- B. Not Mastered

Answer: A

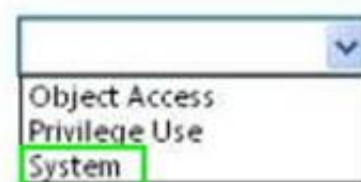
Explanation:

## Answer Area

To enable auditing of all local login events, you need to turn on the **[answer choice]** Advanced Audit Policy.



You need to know when someone accesses files in the c:\temp directory. Auditing is turned on for this directory. You need to enable the **[answer choice]** Advanced Audit Policy to log these events.



### NEW QUESTION 41

To prevent users from copying data to removable media, you should:

- A. Lock the computer cases
- B. Apply a group policy
- C. Disable copy and paste
- D. Store media in a locked room

**Answer:** B

#### Explanation:

Reference: <http://blogs.technet.com/b/askds/archive/2008/08/25/removable-storage-group-policy-and-windows-server-2008-and-windows-vista.aspx>

### NEW QUESTION 43

You need to limit the programs that can run on client computers to a specific list. Which technology should you implement?

- A. Windows Security Center
- B. Security Accounts Manager
- C. System Configuration Utility
- D. AppLocker group policies

**Answer:** A

### NEW QUESTION 46

The manager of a coffee shop hires you to securely set up WiFi in the shop.

To keep computer users from seeing each other, what should you use with an access point?

- A. Client bridge mode
- B. Client isolation mode
- C. MAC address filtering
- D. Client mode

**Answer:** B

#### Explanation:

Wireless Client Isolation is a unique security feature for wireless networks. When Client Isolation is enabled any and all devices connected to the wireless LAN will be unable to talk to each other.

### NEW QUESTION 47

Humongous Insurance is an online healthcare insurance company. During an annual security audit a security firm tests the strength of the company's password policy and suggests that Humongous Insurance implement password history policy.

What is the likely reason that the security firm suggests this?

- A. Past passwords were easily cracked by the brute force method.
- B. Past passwords of users contained dictionary words.
- C. Previous password breaches involved use of past passwords.
- D. Past passwords lacked complexity and special characters.

**Answer:** B

### NEW QUESTION 51

#### HOTSPOT

For each of the following statements, select Yes if the statement is true. Otherwise, select No. Each correct selection is worth one point.

## Answer Area

	Yes	No
By using NAP, administrators can place non-compliant computers onto restricted networks.	<input type="radio"/>	<input type="radio"/>
All computers that are not in compliance with NAP policies require manual intervention to be brought into compliance.	<input type="radio"/>	<input type="radio"/>
NAP can enforce that client computers are running a firewall.	<input type="radio"/>	<input type="radio"/>

- A. Mastered  
B. Not Mastered

**Answer:** A

**Explanation:**

## Answer Area

	Yes	No
By using NAP, administrators can place non-compliant computers onto restricted networks.	<input checked="" type="radio"/>	<input type="radio"/>
All computers that are not in compliance with NAP policies require manual intervention to be brought into compliance.	<input type="radio"/>	<input checked="" type="radio"/>
NAP can enforce that client computers are running a firewall.	<input checked="" type="radio"/>	<input type="radio"/>

### NEW QUESTION 52

What is the primary advantage of using Active Directory Integrated Zones?

- A. Zone encryption  
B. Password protection  
C. Non-repudiation  
D. Secure replication

**Answer:** D

**Explanation:**

Reference: <http://books.google.com/books?id=CYy-2LBZCVgC&pg=PA201&dq=%22Active+Directory+Integrated+Zones%22,+Secure+replication&hl=en&sa=X&ei=9s92U-v1KI-zyASjzILIDg&ved=0CE0Q6AEwAQ#v=onepage&q=%22Active%20Directory%20Integrated%20Zones%22%2C%20Secure%20replication&f=false>

### NEW QUESTION 55

The certificate of a secure public Web server on the Internet should be:

- A. Issued by a public certificate authority (CA)  
B. Signed by using a 4096-bit key  
C. Signed by using a 1024-bit key  
D. Issued by an enterprise certificate authority (CA)

**Answer:** A

### NEW QUESTION 60

Which three elements does HTTPS encrypt? (Choose three.)

- A. Browser cookies  
B. Server IP address

- C. Port numbers
- D. Website URL
- E. Login information

**Answer:** ADE

**Explanation:**

Reference: <http://stackoverflow.com/questions/499591/are-https-urls-encrypted>

#### NEW QUESTION 65

You sign up for an online bank account. Every 6 months, the bank requires you to change your password. You have changed your password 5 times in the past. Instead of coming up with a new password, you decide to use one of your past passwords, but the bank's password history prevents you on doing so. Select the correct answer if the underlined text does not make the statement correct Select "No change is needed" if the underlined text makes the statement correct.

- A. Minimum password age
- B. Maximum password duration
- C. Password complexity
- D. No change is needed.

**Answer:** D

#### NEW QUESTION 70

HOTSPOT

For each of the following statements, select Yes if the statement is true. Otherwise, select No. Each correct selection is worth one point.

#### Answer Area

	Yes	No
If your computer is on a domain, your network administrator can reset your password.	<input type="radio"/>	<input type="radio"/>
An administrator account can reset a password for a standard user account.	<input type="radio"/>	<input type="radio"/>
There is a risk of losing access to encrypted files if a password is reset.	<input type="radio"/>	<input type="radio"/>

- A. Mastered
- B. Not Mastered

**Answer:** A

**Explanation:**

#### Answer Area

	Yes	No
If your computer is on a domain, your network administrator can reset your password.	<input checked="" type="radio"/>	<input type="radio"/>
An administrator account can reset a password for a standard user account.	<input checked="" type="radio"/>	<input type="radio"/>
There is a risk of losing access to encrypted files if a password is reset.	<input checked="" type="radio"/>	<input type="radio"/>

#### NEW QUESTION 71

This question requires that you evaluate the underlined text to determine if it is correct. The first line of defense against attacks from the Internet is a software firewall.

Select the correct answer if the underlined text does not make the statement correct. Select "No change is needed" if the underlined text makes the statement correct.

- A. hardware firewall
- B. virus software
- C. radius server
- D. No change is needed

**Answer:** A

**NEW QUESTION 72**

The WPA2 PreShared Key (PSK) is created by using a passphrase (password) and salting it with the WPS PIN.

Select the correct answer if the underlined text does not make the statement correct. Select "No change is needed" if the underlined text makes the statement correct.

- A. Service Set Identifier (SSID)
- B. Admin password
- C. WEP key
- D. No change is needed

**Answer:** A

**NEW QUESTION 76**

What are two attributes that an email message may contain that should cause a user to question whether the message is a phishing attempt? (Choose two.)

- A. An image contained in the message
- B. Spelling and grammar errors
- C. Threats of losing service
- D. Use of bold and italics

**Answer:** BC

**Explanation:**

Reference: <http://www.microsoft.com/security/online-privacy/phishing-symptoms.aspx>

**NEW QUESTION 77**

Which is the minimum requirement to create BitLocker-To-Go media on a client computer?

- A. Windows XP Professional Service Pack 3
- B. Windows Vista Enterprise Edition
- C. Windows 7 Enterprise Edition
- D. Windows 2000 Professional Service Pack 4

**Answer:** A

**NEW QUESTION 78**

Which two are included in an enterprise antivirus program? (Choose two.)

- A. Attack surface scanning
- B. On-demand scanning
- C. Packet scanning
- D. Scheduled scanning

**Answer:** BD

**NEW QUESTION 83**

HOTSPOT

For each of the following statements, select Yes if the statement is true. Otherwise, select No. Each correct selection is worth one point.

**Answer Area**

	Yes	No
An intruder can spoof MAC addresses to get around MAC address filtering.	<input type="radio"/>	<input type="radio"/>
Intruders can find a wireless network if the Service Set Identifier (SSID) is hidden.	<input type="radio"/>	<input type="radio"/>
WEP security is strong as long as it has a 128-bit key.	<input type="radio"/>	<input type="radio"/>

- A. Mastered  
B. Not Mastered

**Answer:** A

**Explanation:**

**Answer Area**

	Yes	No
An intruder can spoof MAC addresses to get around MAC address filtering.	<input checked="" type="radio"/>	<input type="radio"/>
Intruders can find a wireless network if the Service Set Identifier (SSID) is hidden.	<input checked="" type="radio"/>	<input type="radio"/>
WEP security is strong as long as it has a 128-bit key.	<input type="radio"/>	<input checked="" type="radio"/>

**NEW QUESTION 86**

**HOTSPOT**

An employee where you work is unable to access the company message board in Internet Explorer. You review her Internet Options dialog box, as shown in the following image:



Use the drop-down menus to select the answer choice that completes each statement. Each correct selection is worth one point.

## Answer Area

The message board, <http://mkteam/>, would be affected by settings under the **[answer choice]** security zone.

The employee can see the site, but ActiveX controls will not load. You have to **[answer choice]**

## Answer Area

The message board, <http://mkteam/>, would be affected by settings under the **[answer choice]** security zone.

Internet  
Local Intranet  
Restricted Sites

The employee can see the site, but ActiveX controls will not load. You have to **[answer choice]**

change the security level on Local Intranet.  
change the security level on Internet.  
uncheck Enable Protected Mode.

- A. Mastered
- B. Not Mastered

Answer: A

Explanation:

## Answer Area

The message board, <http://mkteam/>, would be affected by settings under the **[answer choice]** security zone.

Internet  
Local Intranet  
Restricted Sites

The employee can see the site, but ActiveX controls will not load. You have to **[answer choice]**

change the security level on Local Intranet.  
change the security level on Internet.  
uncheck Enable Protected Mode.

## NEW QUESTION 88

HOTSPOT

For each of the following statements, select Yes if the statement is true. Otherwise, select No. Each correct selection is worth one point.

## Answer Area

	Yes	No
IPsec requires network applications to be IPsec aware.	<input type="radio"/>	<input type="radio"/>
IPsec encrypts data.	<input type="radio"/>	<input type="radio"/>
IPsec adds overhead for all network communications for which it is used.	<input type="radio"/>	<input type="radio"/>

- A. Mastered
- B. Not Mastered

**Answer:** A

**Explanation:**

### Answer Area

	Yes	No
IPsec requires network applications to be IPsec aware.	<input type="radio"/>	<input checked="" type="radio"/>
IPsec encrypts data.	<input checked="" type="radio"/>	<input type="radio"/>
IPsec adds overhead for all network communications for which it is used.	<input checked="" type="radio"/>	<input type="radio"/>

### NEW QUESTION 93

The purpose of User Account Control (UAC) is to:

- A. Encrypt the user's account
- B. Limit the privileges of software
- C. Secure your data from corruption
- D. Facilitate Internet filtering

**Answer:** B

**Explanation:**

User Account Control (UAC) is a technology and security infrastructure introduced with Microsoft's Windows machines. It aims to improve the security of Microsoft Windows by limiting application software to standard user privileges until an administrator authorizes an increase or elevation. In this way, only applications trusted by the user may receive administrative privileges, and malware should be kept from compromising the operating system.

### NEW QUESTION 94

A digitally signed e-mail message:

- A. Validates the recipient
- B. Validates the sender
- C. Is encrypted
- D. Is virus-free

**Answer:** B

**Explanation:**

By digitally signing a message, you apply your unique digital mark to the message. The digital signature includes your certificate and public key. This information proves to the recipient that you signed the contents of the message and not an imposter, and that the contents have not been altered in transit.

Reference: <http://office.microsoft.com/en-us/outlook-help/secure-messages-with-a-digital-signature-HP001230539.aspx>

### NEW QUESTION 99

A mail system administrator scans for viruses in incoming emails to increase the speed of mail processing.

Select the correct answer if the underlined text does not make the statement correct. Select "No change is needed" if the underlined text makes the statement correct.

- A. Decrease the chances of a virus getting to a client machine
- B. Verify that the senders of the messages are legitimate
- C. Ensure that all links in the messages are trustworthy
- D. No change is needed.

**Answer:** A

### NEW QUESTION 101

HOTSPOT

For each of the following statements, select Yes if the statement is true. Otherwise, select No. Each correct selection is worth one point.

## Answer Area

	Yes	No
There are several built-in basic audit policies and advanced audit policies in Windows.	<input type="radio"/>	<input type="radio"/>
Advanced audit policies applied by a Group Policy are compatible with a basic audit policy.	<input type="radio"/>	<input type="radio"/>
A system access control list (SACL) enables administrators to log attempts to access a secured object.	<input type="radio"/>	<input type="radio"/>

- A. Mastered  
B. Not Mastered

**Answer:** A

**Explanation:**

## Answer Area

	Yes	No
There are several built-in basic audit policies and advanced audit policies in Windows.	<input checked="" type="radio"/>	<input type="radio"/>
Advanced audit policies applied by a Group Policy are compatible with a basic audit policy.	<input type="radio"/>	<input checked="" type="radio"/>
A system access control list (SACL) enables administrators to log attempts to access a secured object.	<input checked="" type="radio"/>	<input type="radio"/>

### NEW QUESTION 103

How does the sender policy framework (SPF) aim to reduce spoofed email?

- A. It provides a list of IP address ranges for particular domains so senders can be verified.  
B. It includes an XML policy file with each email that confirms the validity of the message.  
C. It lists servers that may legitimately forward mail for a particular domain.  
D. It provides an encryption key so that authenticity of an email message can be validated

**Answer:** A

### NEW QUESTION 106

Coho Winery wants to increase their web presence and hires you to set up a new web server. Coho already has servers for their business and would like to avoid purchasing a new one.

Which server is best to use as a web server, considering the security and performance concerns?

- A. SQL Server  
B. File Server  
C. Domain Controller  
D. Application Server

**Answer:** C

### NEW QUESTION 110

.....

## Thank You for Trying Our Product

\* 100% Pass or Money Back

All our products come with a 90-day Money Back Guarantee.

\* One year free update

You can enjoy free update one year. 24x7 online support.

\* Trusted by Millions

We currently serve more than 30,000,000 customers.

\* Shop Securely

All transactions are protected by VeriSign!

**100% Pass Your 98-367 Exam with Our Prep Materials Via below:**

<https://www.certleader.com/98-367-dumps.html>