

Exam Questions 70-740

Installation, Storage, and Compute with Windows Server 2016

<https://www.2passeasy.com/dumps/70-740/>



NEW QUESTION 1

You have a server that runs Windows Server 2016 Standard.

You create a new three-way mirror storage space. You format the storage space by using ReFS.

Which two features can you use on the new storage space? Each correct answer presents a complete solution.

- A. file and folder permissions
- B. disk quotas
- C. Encrypting File System (EFS)
- D. long file names
- E. Data Deduplication

Answer: AE

NEW QUESTION 2

Note: This question is part of a series of questions that present the same scenario. Each question in the series contains a unique solution that might meet the stated goals. Some question sets might have more than one correct solution, while others might not have a correct solution.

After you answer a question in this section, you will NOT be able to return to it. As a result, these questions will not appear in the review screen.

You have two servers that run Windows Server 2016.

You have a server named Server1 that runs Windows Server 2016. Server1 has the Hyper-V server role and Docker installed.

You pull the Microsoft/iis Docker image to Server1.

You need to view the available space in the Microsoft/iis Docker image. Solution: You run the following commands.

```
docker run --name container1 --isolation hyperv --d Microsoft/iis docker exec -i container1 cmd.exe dir
```

Does this meet the goal?

- A. Yes
- B. No

Answer: B

NEW QUESTION 3

You have two Hyper V hosts named Server1 and Server2 that run Windows Server 2012 R2. The servers are nodes in a failover cluster named Cluster1.

You perform a rolling upgrade of the cluster nodes to Windows Server 2016.

You need to ensure that you can implement the Virtual Machine Load Balancing feature. Which cmdlet should you use?

- A. Update-ClusterNetWorkNameResource
- B. Set-GusterGroupSet
- C. Update-ClusterFunctionalLevel
- D. Set-CauClosterRole

Answer: C

Explanation:

<https://docs.microsoft.com/en-us/windows-server/failover-clustering/cluster-operating-system-rollingupgrade#cluster-os-rolling-upgrade-process>

NEW QUESTION 4

You have a Hyper-V host named Server1 that runs Windows Server 2016. Server1 hosts a virtual machine named VM1 that runs Windows Server 2016.

On VM1, Dynamic Memory is disabled, MAC spoofing is enabled for the virtual network adapter, and checkpoints are disabled. You need to ensure that you can install the Hyper-V server role on VM1. What should you do?

- A. Shut down VM1, enable Dynamic Memory on VM1 and then start VM1.
- B. Configure VM1 to use standard checkpoints.
- C. Disable Hyper-V integration services for VM1 and then restarts VM1.
- D. Shut down VMI, run the Set-VMProcessor cmdlet and then start VM1.

Answer: D

Explanation:

References:

<https://docs.microsoft.com/en-us/virtualization/hyper-v-on-windows/user-guide/nested-virtualization>

NEW QUESTION 5

You have a server named Server 1 that runs Windows Server 2016 Window, Defender is enabled on Server1.

Server1 runs an application named App that stores various types of files in Microsoft OneDrive for Business, Microsoft OneDrive, and Microsoft SharePoint Online.

Appt also Interacts with several local services,

You need to prevent Windows Defender from scanning any files opened by Appl. Should you do on Server1?

- A. Run the Set-ExecutionPolicy cmdlet
- B. Form the Windows Defender settings, configure a file exclusion.
- C. From the Windows Defender settings, configure a process exclusion.
- D. Modify the cloud-based protection settings in Windows Defender.

Answer: B

Explanation:

References:

<https://www.windowscentral.com/how-exclude-files-and-folders-windows-defender-antivirus-scans>

NEW QUESTION 6

You have a server named Server1 that runs Windows Server 2016. Windows Defender is enabled on Server1.

Server1 runs an application named App1 that stores various types of files in Microsoft OneDrive for Business, MicrosoftOneDrive, and Microsoft SharePoint Online. App1 also interacts with several local services.

You need to prevent Windows Defender from scanning any files opened by App1. What should you do on Server1?

- A. From the Windows Defender settings, configure a file exclusion.
- B. Run the New-CiPolicy cmdlet.
- C. Modify the real-time protection settings in Windows Defender.
- D. From the Windows Defender settings, configure a process exclusion.

Answer: A

NEW QUESTION 7

You have a Hyper-V server named Server1 that runs Windows Server 2012 R2.

Server1 hosts a virtual machine named VM1 that runs Windows Server 2016. VM1 connects to an external virtual switch named Switch1.

You can ping VM1 from Server1.

You upgrade Server1 to Windows Server 2016.

You need to ensure that you can connect to VM1 by using PowerShell Direct. What should you do?

- A. Configure the firewall rules on Server1.
- B. Enable the Hyper-V extensible switch extensions on Server1.
- C. Upgrade the configuration version of VM1.
- D. Configure the firewall rules on VM1.

Answer: C

NEW QUESTION 8

You have a Nano Server named Nano1.

Which cmdlet should you use to identify whether the DNS Server role is installed on Nano1?

- A. Find-NanoServerPackage
- B. Get-Package
- C. Find-Package
- D. Get-WindowsOptionalFeature

Answer: B

NEW QUESTION 9

You deploy a Hyper-V server named Served in an isolated test environment The test environment is prevented from accessing the Internet Server1 runs the Datacenter edition of Windows Server 2016. You plan to deploy the following guest virtual machines on the server

Quantity	Operating system	Domain member
10	Windows Server 2012 R2	Yes
4	Windows Server 2016	No
5	Windows Server 2016	Yes

Which activation model should you use for the virtual machines'?

- A. Multiple Activation Key (MAK)
- B. Automatic Virtual Machine Activation (AVMA)
- C. Original Equipment Manufacturer (OEM) key
- D. Key Management Service (KMS)

Answer: B

NEW QUESTION 10

DRAG DROP

You are deploying DirectAccess to a server named DA1. Da1 will be located behind a firewall and will have a single network adapter The intermediary network will be IPv4.

You need to configure firewall to support DirectAccess.

Which firewall rules should you create for each type of traffic? To answer, drag the appropriate ports and protocols to the correct traffic types. Each port and protocol may be used once, more than once, or not at all. You may need to drag the split bar between panes or scroll to view content

Ports and Protocols

IP protocol ID 1

TCP 443

IP Protocol ID 41

UDP 3544

Answer Area

Teredo traffic:

6to4 traffic:

IP-HTTPS:

- A. Mastered
- B. Not Mastered

Answer: A

Explanation:

Ports and Protocols

IP protocol ID 1

TCP 443

IP Protocol ID 41

UDP 3544

Answer Area

Teredo traffic:

6to4 traffic:

IP-HTTPS:

UDP 3544

IP Protocol ID 41

TCP 443

NEW QUESTION 10

You have a Nano Server named Nano1.
You deploy several containers to Nano1 that use an image named Image1. You need to deploy a new container to Nano1 that uses Image1.
What should you run?

- A. the Install-NanoServerPackage cmdlet
- B. theInstall-WindowsFeaturecmdlet
- C. the docker load command
- D. the docker run command

Answer: D

NEW QUESTION 12

DRAG DROP
You have a server named Server1 that runs Windows Server 2016.
You plan to deploy Internet Information Services (US) in a Windows container. You need to prepare Server1 for the planned deployment.
Which three actions should you perform in sequence? To answer, move the appropriate actions from the list of actions to the answer area and arrange them in the correct order

Actions

Install the Hyper-V server role.

Install the Base Container Images.

Install the Container feature.

Install the Web Server role.

Install Docker.

Answer Area

1.

2.

3.

>

<

⬆

⬇

- A. Mastered
- B. Not Mastered

Answer: A

Explanation:

Answer Area

1.

Install the Container feature.

2.

Install Docker.

3.

Install the Base Container Images.

NEW QUESTION 13

You have a server named Served that runs Windows Server 2016. Server1 will be used as a VPN server. You need to configure Server1 to support VPN Reconnect. Which VPN protocol should you use?

- A. PPTP
- B. L2TP
- C. SSTP
- D. IKEv2

Answer: D

NEW QUESTION 14

HOTSPOT

You have a server that runs Windows Server 2016.
You run the commands shown in the following output.

Passing Certification Exams Made Easy

visit - <https://www.2PassEasy.com>

```
PS G:\> Get-DedupVolume | fl

Volume                : G:
VolumeId              : \\?\Volume{2efa2f6e-db4a-4bb1-aal5-31ae8b073d16}\
Enabled               : True
UsageType             : Default
DataAccessEnabled     : True
Capacity              : 923.87 GB
FreeSpace             : 393.98 GB
UsedSpace             : 529.89 GB
UnoptimizedSize       : 1008.7 GB
SavedSpace            : 478.82 GB
SavingRate            : 47 %
MinimumFileAgeDays    : 3
MinimumFileSize       : 32768
NoCompress            : False
ExcludeFolder         : 
ExcludeFileType       : 
ExcludeFileTypeDefault : {edb, jrs}
NoCompressionFileType : {asf, mov, wma, wmv...}
ChunkRedundancyThreshold : 100
Verify               : False
OptimizeInUseFiles    : False
OptimizePartialFiles  : False

PS G:\> Get-Date
Tuesday, June 21, 2016 5:29:58 PM

PS G:\DC01> dir | select Mode,LastWriteTime,Length,Name | ft -AutoSize

Mode      LastWriteTime           Length      Name
-----
d-----  2/18/2015 11:54:56 AM              Snapshots
d-----  2/18/2015 12:11:42 PM            Virtual Machines
-a---    6/21/2016  5:27:40 PM    51539608064 DC01.vhd
-a---    6/18/2016  7:00:00 AM     12400      Readme.txt
-a---    1/5/2015   7:00:00 AM    3939235840   Software.iso
```

For each of the following statements, select Yes if the statement is true. Otherwise, select No.

Answer Area

Statements	Yes	No
DC01.vhd will be processed by deduplication.	<input type="radio"/>	<input type="radio"/>
Readme.txt will be processed by deduplication.	<input type="radio"/>	<input type="radio"/>
Software.iso will be processed by deduplication.	<input type="radio"/>	<input type="radio"/>

- A. Mastered
- B. Not Mastered

Answer: A

Explanation:

Answer Area

Statements	Yes	No
DC01.vhd will be processed by deduplication.	<input type="radio"/>	<input checked="" type="radio"/>
Readme.txt will be processed by deduplication.	<input type="radio"/>	<input checked="" type="radio"/>
Software.iso will be processed by deduplication.	<input checked="" type="radio"/>	<input type="radio"/>

NEW QUESTION 17

You have a server that runs Windows Server 2016.

The server contains a storage pool named Pool1. Pool1 contains five physical disks named Disk1, Disk2, Disk3, Disk4, and Disk5.

A virtual disk named VirtualDisk1 is stored in pool1. VirtualDisk1 uses the parity storage layout. Disk3 fails.

You need to remove Disk3 from Pool1.

Which two commands should you run? Each correct answer presents part of the solution.

- A. Update-StoragePool -FriendlyName Pool1
- B. Set-ResiliencySetting -StoragePool Pool1 -PhysicalDiskRedundancyDefault 4
- C. Reset-PhysicalDisk -FriendlyName Disk3
- D. Set-PhysicalDisk -FriendlyName Disk3 -Usage Retired
- E. Remove-PhysicalDisk -FriendlyName Disk3

Answer: BE

NEW QUESTION 21

Your network contains an Active Directory domain named contoso.com. The domain contains two servers named Server1 and Server2 that have the same hardware configuration.

You need to asynchronously replicate volume F: from Server1 to Server2. What should you do?

- A. Run New-SRPartnership and specify the -ReplcationMode parameter.
- B. Install the Failover Clustering feature and create a new cluster resource group.
- C. Install the Failover Clustering feature and use Cluster Shared Volumes (CSV).
- D. Run Set-DfsrServiceConfiguration and specify the -RPCPort parameter.

Answer: A

NEW QUESTION 25

HOTSPOT

Your network contains an Active Directory domain named contoso.com. The domain contains four servers named Server1, Server2, Server3, and Server4 that run Windows Server 2016.

Server1 and Server2 are nodes in a Hyper-V cluster named Cluster1. You have a highly available virtual machine named VM1.

Server1 is the owner node of VM1. Server3 and Server4 are nodes of a scale-out file server named Cluster2.

The storage on Server1 is configured as shown in the following table.

Location	Type
C:\ClusterStorage\Volume1	iSCSI Cluster Shared Volumes (CSV)
D:\	A locally attached disk
E:\	An iSCSI LUN
\\Cluster2\Share1	A file share on Cluster2

You need to move the virtual disk of VM1 to a different location.

What should you do? To answer, select the appropriate options in the answer area.

Tool you should move the virtual disk of VM1:

▼

Disk Management
Failover Cluster Manager
Hyper-V Manager
Server Manager

Location to which you should move the virtual disk of VM1:

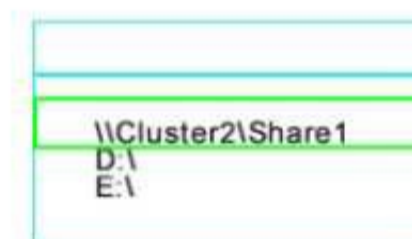
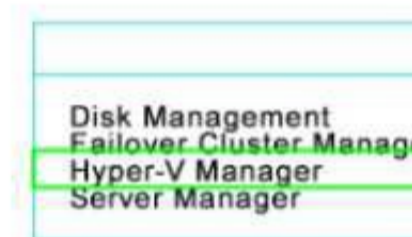
▼

\\Cluster2\Share1
D:\
E:\

- A. Mastered
- B. Not Mastered

Answer: A

Explanation:



NEW QUESTION 30

DRAG DROP

You have a server named Server1 that runs Windows Server 2016.

You need to deploy the first node cluster of a Network Controller cluster

Which four cmdlets should you run in sequence? To answer, move the appropriate cmdlets from the list of cmdlets to the answer area and arrange them in the correct order

Actions	Answer Area
Install-WindowsFeature	1. <input type="text"/>
New-NetworkControllerNodeObject	2. <input type="text"/>
Enable-NetworkControllerNode	3. <input type="text"/>
Install-NetworkController	4. <input type="text"/>
Install-NetworkControllerCluster	

- A. Mastered
 B. Not Mastered

Answer: A

Explanation:

Install-WindowsFeature
New-NetworkControllerNodeObject
Install-NetworkControllerCluster
Install-NetworkController

NEW QUESTION 35

You have an application named App1. App1 is distributed to multiple Hyper-V virtual machines in a multitenant environment. You need to ensure that the traffic is distributed evenly among the virtual machines that host App1. What should you include in the environment?

- A. Network Controller and Windows Server Network Load Balancing (NLB) nodes
 B. Network Controller and Windows Server Software Load Balancing (SLB) nodes
 C. an RAS Gateway and Windows Server Network Load Balancing (NLB) nodes
 D. an RAS Gateway and Windows Server Software Load Balancing (SLB) nodes

Answer: D

NEW QUESTION 37

Your company has 10 offices. Each office has a local network that contains several Hyper-V hosts that run Windows Server 2016. All of the offices are connected by high speed, low latency WAN links.

You need to ensure that you can use QoS policies for Live Migration traffic between the offices. Which component should you install?

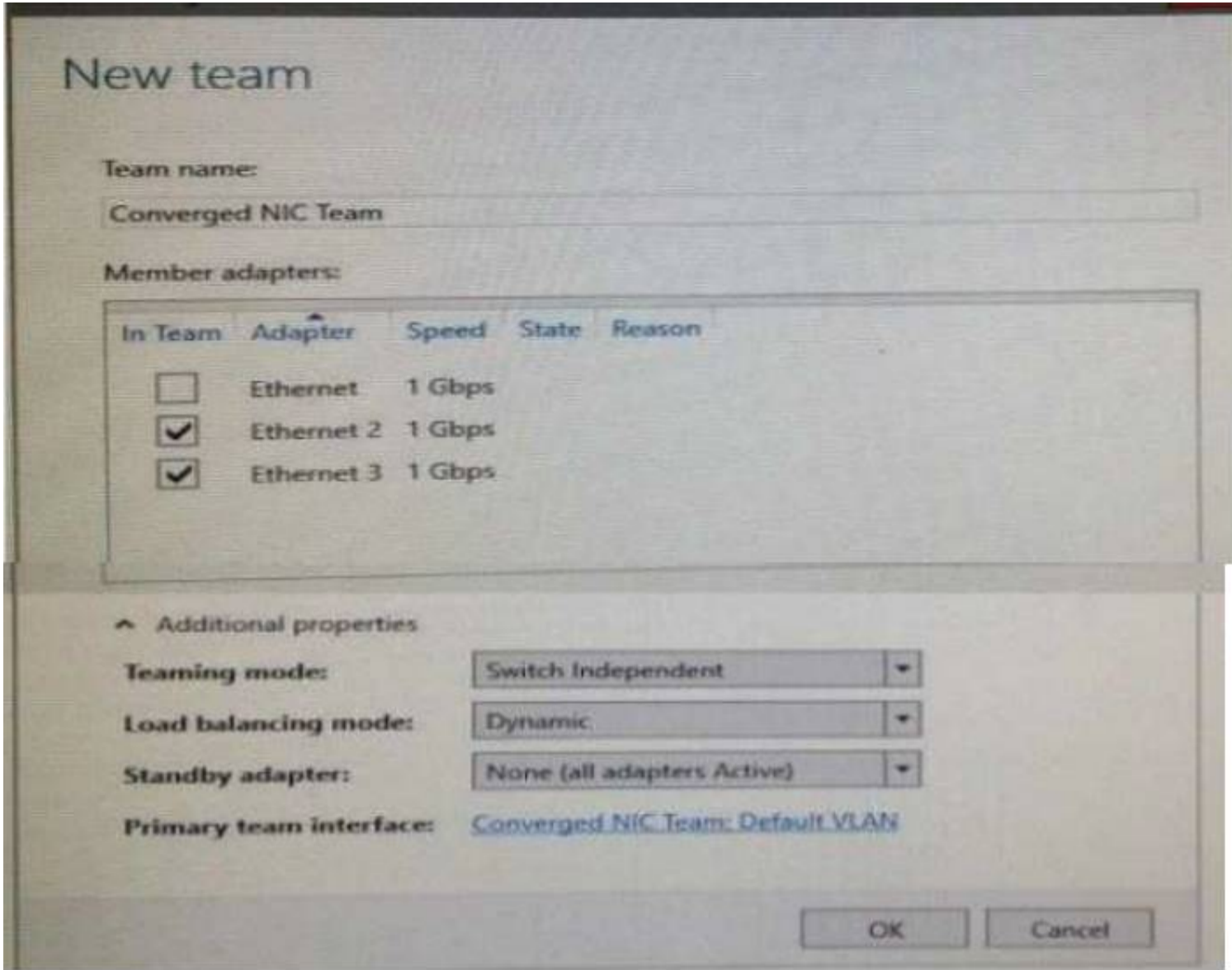
- A. the Multipath I/O feature
 B. the Routing role service
 C. the Network Controller server role
 D. the Canary Network Diagnostics feature
 E. the Data Center Bridging feature

Answer: CE

NEW QUESTION 40

You have a server named Server1 that runs Windows Server 2016. Server1 is a Hyper-V host that hosts a virtual machine named VM1. Server1 has three network adapter cards that connect to a virtual switch named vSwitch1.

You configure NIC Teaming on VM1 as shown in the exhibit.



You need to ensure that VM1 will retain access to the network if a physical adapter card fails on Server1. What should you do?

- A. From Hyper-V Manager on Server1, modify the settings of VM1.
- B. From Windows PowerShell on Server1, run theSet-VmSwitchcmdlet.
- C. From the properties of the NIC team on VM1, add the adapter named Ethernet to the NIC tea
- D. D.From the properties of the NIC team on VM1. change the load balancing of the NIC team.

Answer: A

NEW QUESTION 43

HOTSPOT

You have a machine named VM1 that runs Windows Server 2016 VM1 is a Remote Desktop Services (RDS) server. You need to ensure that only TCP port 3389 can be used to connect to VM1 over the network. Which command should you run on the Hyper-V host? To answer, select the appropriate options in the answer area.

▼

Add-VmNetworkAdapterAcl
Add-VmNetworkAdapterExtendedAcl
Set-VmNetworkAdapter
Set-VmNetworkAdapterRoutingDomain
Mapping

-VMName VM1 -Direction

▼

Inbound
Outbound

- A. Mastered
- B. Not Mastered

Answer: A

Explanation:

▼

Add-VmNetworkAdapterAcl
Add-VmNetworkAdapterExtendedAcl
Set-VmNetworkAdapter
Set-VmNetworkAdapterRoutingDomain
Mapping

-VMName VM1 -Direction

▼

Inbound
Outbound

-Action Allow -LocalPort 3389 -Protocol TCP -Weight 10

NEW QUESTION 47

HOTSPOT

You have a server named Server1 that runs Windows Server 2016 Server1 is a Hyper-V host
You have two network adapter cards on Server1 that are Remote Direct Memory Access (RDMA) - capable.
You need to aggregate the bandwidth of the network adapter cards for a virtual machine on Server1. The solution must ensure that the virtual machine can use the RDMA capabilities of the network adapter cards
Which command should you run first? To answer, select the appropriate options in the answer area.

▼

Add-NetLbfoTeamNic
Add-VmNetworkAdapter
New-NetLbfoTeam
Add-VmSwitch

-Name Production -NetAdapterName "NIC 1", "NIC 2"

▼

-EnableEmbeddedTeaming
-EnableIov
-EnablePacketDirect

\$true

- A. Mastered
- B. Not Mastered

Answer: A

Explanation:

▼

Add-NetLbfoTeamNic
Add-VmNetworkAdapter
New-NetLbfoTeam
Add-VmSwitch

-Name Production -NetAdapterName "NIC 1", "NIC 2"

▼

-EnableEmbeddedTeaming
-EnableIov
-EnablePacketDirect

\$true

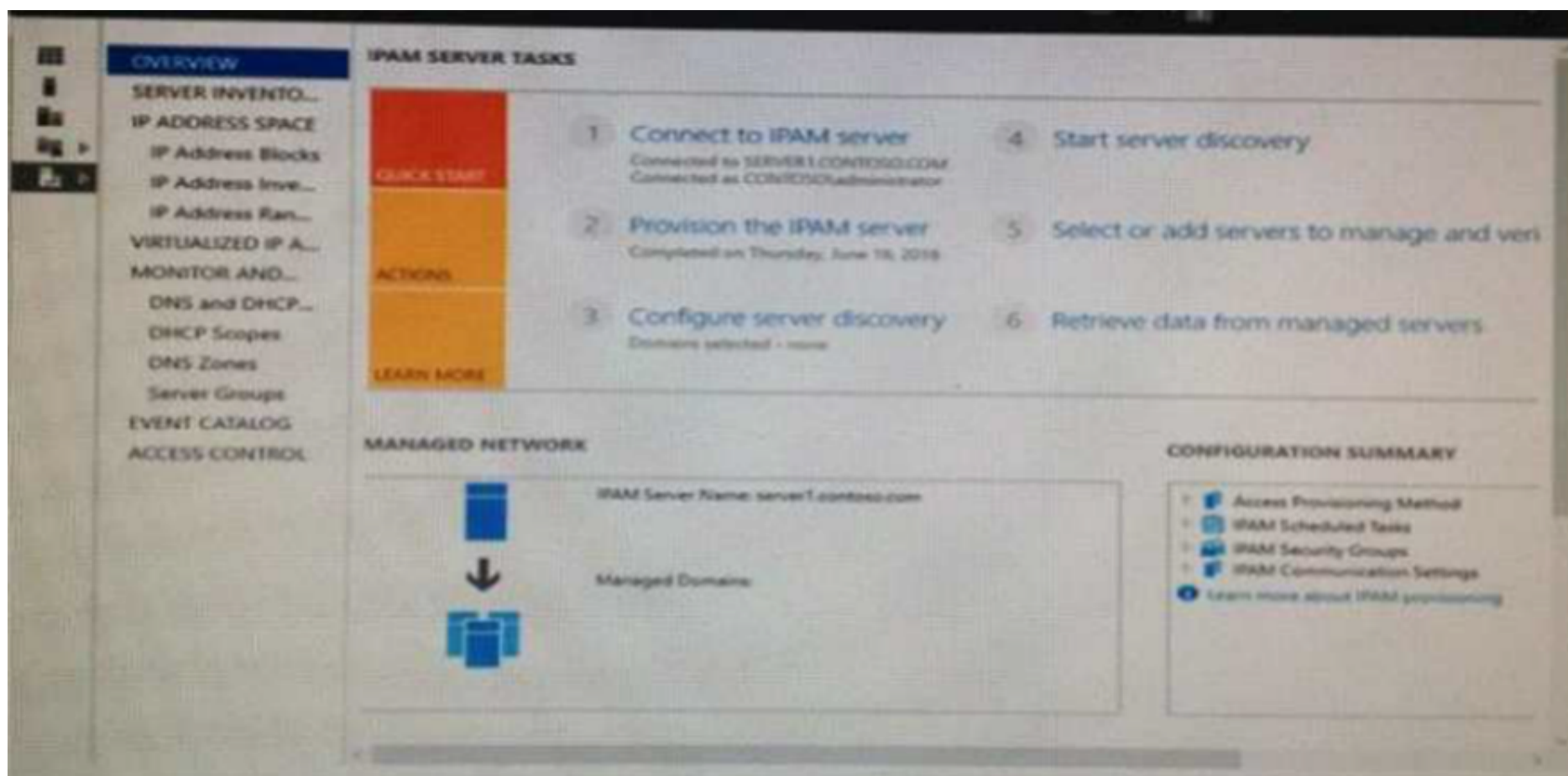
NEW QUESTION 52

HOTSPOT

Your company has a testing environment that contains an Active Directory domain named contoso.com The domain contains a server named Server1 that runs Windows Server 2016. Server1 has IP Address Management (IPAM) installed IPAM has the following configuration.

Version	: 6.3.0.1
Port	: 4885
ProvisioningMethod	: Automatic
GpoPrefix	: IPAM
HMACKey	: System.Security.SecureString

The IPAM Overview page from Server Manager is shown in the IPAM Overview exhibit.



The group policy configurations are shown in the GPO exhibit.



For each of the following statements, select Yes if the statement is true Otherwise, select No

Statements	Yes	No
If a DNS server is added to contoso.com, the server will be discovered by IPAM automatically.	<input type="radio"/>	<input type="radio"/>
If you manually add a DHCP server named Server3 to IPAM and set the Manageability status to Managed, the IPAM_DHCP Group Policy will apply to Server3.	<input type="radio"/>	<input type="radio"/>
If you click Start server discovery, the domain controllers in contoso.com will be discovered by IPAM.	<input type="radio"/>	<input type="radio"/>

- A. Mastered
- B. Not Mastered

Answer: A

Explanation:

Statements	Yes	No
If a DNS server is added to contoso.com, the server will be discovered by IPAM automatically.	<input type="radio"/>	<input checked="" type="radio"/>
If you manually add a DHCP server named Server3 to IPAM and set the Manageability status to Managed, the IPAM_DHCP Group Policy will apply to Server3.	<input checked="" type="radio"/>	<input type="radio"/>
If you click Start server discovery, the domain controllers in contoso.com will be discovered by IPAM.	<input type="radio"/>	<input checked="" type="radio"/>

NEW QUESTION 57

You need to ensure that VM1 and VM2 can communicate with each other only. The solution must prevent VM1 and VM2 from communicating with Server1. Which cmdlet should you use?

- A. Set-NetNeighbor
- B. Remove-VMSwitchTeamMember
- C. Set-VMSwitch
- D. Enable-VMSwitchExtension

Answer: C

NEW QUESTION 59

HOTSPOT

Your network contains an Active Directory domain named contoso.com. The domain contains a domain controller named Server1 and a member server named Server2.

Server1 has the DNS Server role installed Server2 has IP Address Management IPAM installed The IPAM server retrieves zones from Server1 as shown in the following table

Zone name	Dynamic update setting	Access scope
Adatum.com	Secure	\Global
Fabrikam.com	None	\Global\Scope1

The IPAM server has one access policy configured as shown in the exhibit.



For each of the following statements, select Yes, if the statement is true. Otherwise, select No.

Answer Area

Statements	Yes	No
User1 can add a host (A) record) to adatum.com.	<input type="radio"/>	<input type="radio"/>
User1 can add a host (A) record to fabrikam.com.	<input type="radio"/>	<input type="radio"/>
User1 can delete the fabrikam.com zone.	<input type="radio"/>	<input type="radio"/>

- A. Mastered
- B. Not Mastered

Answer: A

Explanation:

Statements	Yes	No
User1 can add a host (A) record) to adatum.com.	<input type="radio"/>	<input checked="" type="radio"/>
User1 can add a host (A) record to fabrikam.com.	<input type="radio"/>	<input checked="" type="radio"/>
User1 can delete the fabrikam.com zone.	<input checked="" type="radio"/>	<input type="radio"/>

NEW QUESTION 64

DRAG DROP

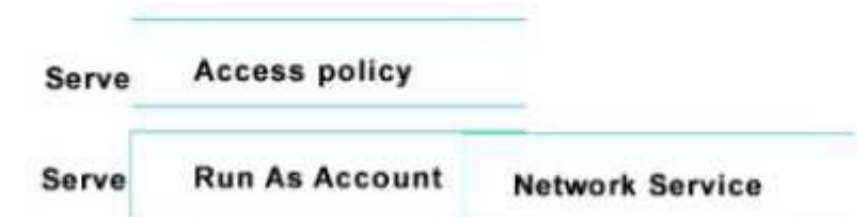
Your network contains an Active Directory domain named contoso.com. The domain contains two servers named Server1 and Server2 that run Windows Server 2016. Server1 has IP Address Management (IPAM) installed. Server2 has Microsoft System Center 2016 Virtual Machine Manager (VMM) installed. You need to integrate IPAM and VMM. Which types of objects should you create on each server? To answer, drag the appropriate object types to the correct servers. Each object type may be used once, more than once, or not at all. You may need to drag the split bar between panes or scroll to view content.



- A. Mastered
- B. Not Mastered

Answer: A

Explanation:



NEW QUESTION 65

Note: This question is part of a series of questions that use the same similar answer choices An answer choice may be correct for more than one question in the series Each question is independent of the other questions in this series. Information and details provided in a question apply only to that question

You have a Hyper-V host named Server1 that runs Windows Server 2016 and a two-node scale-out file server cluster named Cluster1

A virtual machine named VM1 runs on Server1

You need to migrate the storage on VM1 to Cluster1 Which tool should you use?

- A. the clussvc.exe command
- B. the cluster.exe command
- C. the Computer Management console
- D. the configurehyperv.exe command
- E. the Disk Management console
- F. the Failover Cluster Manager console
- G. the Hyper-V Manager console
- H. the Server Manager Desktop app

Answer: G

NEW QUESTION 69

Note: This question is part of a series of questions that use the same similar answer choices An answer choice may be correct for more than one question in the series Each question is independent of the other questions in this series. Information and details provided in a question apply only to that question

You have a two-node Hyper-V cluster named Cluster1 As virtual machine named VM1 runs on Cluster1

You need to configure monitoring of VM1 The solution must move VM1 to a different node if the Print Spooler service on VM1 stops unexpectedly

Which tool should you use?

- A. the clussvc.exe command
- B. the cluster.exe command
- C. the Computer Management console
- D. the configurehyperv.exe command
- E. the Disk Management console
- F. the Failover Cluster Manager console
- G. the Hyper-V Manager console
- H. the Server Manager Desktop app

Answer: F

NEW QUESTION 71

Note: This question is part of a series of questions that use the same similar answer choices An

answer choice may be correct for more than one question in the series Each question is independent of the other questions in this series. Information and details provided in a question apply only to that question

You have three servers named Server1, Server2. Server3 that run Windows Server 2016 Server1 and Server2 have the Hyper-V server role installed Server3 has the iSCSI Target Server role service installed.

Server name	Components installed
Server1	Hyper-V server role
Server2	Hyper-V server role
Server3	iSCSI Target Server role service

You need to create a Hyper-V cluster Which tool should you use first?

- A. the clussvc.exe command
- B. the cluster.exe command
- C. the Computer Management console
- D. the configurehyperv.exe command
- E. the Disk Management console
- F. the Failover Cluster Manager console
- G. the Hyper-V Manager console
- H. the Server Manager Desktop app

Answer: H

NEW QUESTION 74

Note: This question is part of a series of questions that use the same similar answer choices An answer choice may be correct for more than one question in the series Each question is independent of the other questions in this series. Information and details provided in a question apply only to that question

You have a two-node Hyper-V cluster named Cluster1 at a primary location and a stand-alone Hyper- V host named Server1 at a secondary location

A virtual machine named VM1 runs on Cluster1 You configure a Hyper-V Replica of VM1 to Server1 You need to perform a Test Fai lover of VM1. Which tool should you use?

- A. the clussvc.exe command
- B. the cluster.exe command
- C. the Computer Management console
- D. the configurehyperv.exe command
- E. the Disk Management console
- F. the Failover Cluster Manager console
- G. the Hyper-V Manager console
- H. the Server Manager Desktop app

Answer: G

NEW QUESTION 75

Note: This question is part of a series of questions that use the same similar answer choices. An answer choice may be correct for more than one question in the series. Each question is independent of the other questions in this series. Information and details provided in a question apply only to that question.

You have an Active Directory domain that contains two Hyper-V servers named Server1 and Server2. Server1 has Windows Server 2016 installed. Server2 has Windows Server 2012 R2 installed.

Each Hyper-V server has three network cards. Each network card is connected to a different subnet. Server1 contains a dedicated migration network.

Server2 contains a virtual machine named VM5.

You plan to perform a live migration of VM5 to Server1.

You need to ensure that Server1 uses all available networks to perform the live migration of VM5. What should you run1?

- A. the Mount-VHD cmdlet
- B. the Diskpart command
- C. the Set-VHD cmdlet
- D. the Set-VM cmdlet
- E. the Set-VMHost cmdlet
- F. the Set-VMProcessor cmdlet
- G. the Install-WindowsFeature cmdlet
- H. the Optimize-VHD cmdlet

Answer: E

NEW QUESTION 76

Note: This question is part of a series of questions that use the same similar answer choices. An answer choice may be correct for more than one question in the series. Each question is independent of the other questions in this series. Information and details provided in a question apply only to that question.

You have a Hyper-V host named Server1 that runs Windows Server 2016. Server1 contains a virtual machine named VM1.

You need to ensure that you can use nested virtualization on VM1. What should you run on Server1?

- A. the Mount-VHD cmdlet
- B. the Diskpart command
- C. the Set-VHD cmdlet
- D. the Set-VM cmdlet
- E. the Set-VMHost cmdlet
- F. the Set-VMProcessor cmdlet
- G. the Install-WindowsFeature cmdlet
- H. the Optimize-VHD cmdlet

Answer: F

NEW QUESTION 78

Note: This question is part of a series of questions that use the same similar answer choices An answer choice may be correct for more than one question in the series Each question is independent of the other questions in this series. Information and details provided in a question apply only to that question

You have a Hyper-V host named Server1 that runs Windows Server 2016 Server1 has a dynamically expanding virtual hard disk (VHD) file that is 900 GB The VHD contains 400 GB of free space.

You need to reduce the amount of disk space used by the VHD. What should you run?

- A. the Mount-VHD cmdlet
- B. the Diskpart command
- C. the Set-VHD cmdlet
- D. the Set-VM cmdlet
- E. the Set-VMHost cmdlet
- F. the Set-VMProcessor cmdlet
- G. the Install-WindowsFeature cmdlet
- H. the Optimize-VHD cmdlet

Answer: H

NEW QUESTION 82

Note: This question is part of a series of questions that use the same similar answer choices An answer choice may be correct for more than one question in the series Each question is independent of the other questions in this series. Information and details provided in a question apply only to that question

You have a Hyper-V host named Server1 that runs Windows Server 2016 You plan to deploy several shielded virtual machines on Server1

You deploy a Host Guardian on a new server

You need to ensure that Server1 can host shielded virtual machines. What should you run first?

- A. the Mount-VHD cmdlet
- B. the Diskpart command
- C. the Set-VHD cmdlet
- D. the Set-VM cmdlet
- E. the Set-VMHost cmdlet
- F. the Set-VMProcessor cmdlet
- G. the Install-WindowsFeature cmdlet
- H. the Optimize-VHD cmdlet

Answer: G

NEW QUESTION 85

In this section, you'll see one or more sets of questions with the same scenario and problem Each

question presents a unique solution to the problem, and you must determine whether the solution meets the stated goals. Any of the solutions might solve the problem. It is also possible that none of the solutions solve the problem.

Once you answer a question in this section, you will NOT be able to return to it. As a result, these questions will not appear in the review screen

Note: This question is part of a series of questions that present the same scenario. Each question in the series contains a unique solution. Determine whether the solution meets the stated goals.

Your network contains an Active Directory domain named contoso.com. The domain contains a DNS server named Server1. All client computers run Windows 10. On Server1, you have the following zone configuration

ZoneName	ZoneType	IsAutoCreated	IsDsIntegrated	IsReverseLookupZone	IsSign
-----	-----	-----	-----	-----	-----
_msdcs.contoso.com	Primary	False	True	False	False
adatum.com	Forwarder	False	False	False	False
contoso.com	Primary	False	True	False	False
fabrikam.com	Primary	False	False	False	True
TrustAnchors	Primary	False	True	False	False

You have the following subnets defined on Server1.

Name	IPv4Subnet	IPv6Subnet
----	-----	-----
Subnet1	{10.0.0.0/24}	
Subnet2	{10.0.1.0/24}	
Subnet3	{192.168.15.0/24}	
Subnet4	{172.16.1.0/24}	

You need to prevent Server1 from resolving queries from DNS clients located on Subnet4 Server1

must resolve queries from all other DNS clients

Solution From the Security setting of each zone on Server1, you modify the permissions Does this meet the goal?

- A. Yes
- B. No

Answer: B

NEW QUESTION 86

Note: This question is part of a series of questions that present the same scenario. Each question in the series contains a unique solution that might meet the stated goals. Some question sets might have more than one correct solution, while others might not have a correct solution.

After you answer a question in this section, you will NOT be able to return to it. As a result, these questions will not appear in the review screen.

You have two servers that run Windows Server 2016.

You plan to create a Network Load Balancing (NLB) cluster that will contain both servers. You need to configure the network cards on the servers for the planned NLB configuration.

Solution: You configure the network cards to be on the same subnet and to have static IP addresses. You configure the cluster to use unicast.

Does this meet the goal?

A. Yes

B. No

Answer: A

Explanation:

References:

<https://technet.microsoft.com/en-us/windows-server-docs/networking/technologies/network-load-balancing>

NEW QUESTION 90

Note: This question is part of a series of questions that present the same scenario. Each question in the series contains a unique solution that might meet the stated goals. Some question sets might have more than one correct solution, while others might not have a correct solution.

After you answer a question in this section, you will NOT be able to return to it. As a result, these questions will not appear in the review screen.

You are a server administrator at a company named Contoso, Ltd.

Contoso has a Windows Server 2016 Hyper-V environment configured as shown in the following table.

Hyper-V host name	Configuration	Virtual switch name
Host1	- Uses an Intel processor - Is a member of a SAN named SAN1	Switch1
Host2	- Uses an AMD processor - Has local storage only	Switch2
Host3	- Uses an Intel processor - Is a member of a SAN named SAN1	Switch1
Host4	- Uses an Intel processor - Has local storage only	Switch2

All of the virtual switches are of the external type.

You need to ensure that you can move virtual machines between the hosts without causing the virtual machines to disconnect from the network.

Solution: You implement live migration by using Host3 and Host4. Does this meet the goal?

A. Yes

B. No

Answer: A

NEW QUESTION 95

Note: This question is part of a series of questions that present the same scenario. Each question in the series contains a unique solution that might meet the stated goals. Some question sets might have more than one correct solution, while others might not have a correct solution.

Your network contains an Active Directory forest

You install Windows Server 2016 on 10 virtual machines.

You need to deploy the Web Server (IIS) server role identically to the virtual machines.

Solution: You use Windows PowerShell Desired State Configuration (DSC) to create a default configuration and then you apply the configuration the virtual

,

A. Yes

B. No

Answer: A

Explanation:

References:

<https://www.simple-talk.com/sysadmin/powershell/powershell-desired-state-configuration-the-basics/>

NEW QUESTION 100

HOTSPOT

You have a server named Server1 that runs Windows Server 2016 server.

Server1 has the Docker daemon configured and has a container named Container1.

You need to mount the folder C:\Folder1 on Server1 to C:\ContainerFolder in Container1.

Which command should you run? To answer, select the appropriate options in the answer area.

Answer Area

▼	▼	▼	▼
Copy-ContainerFile	-Name Container1 -Path	C:\Folder1:C:\ContainerFolder	Container1
Docker	run -it -v	%windir%\ContainerFolder	Server1
Set-Service			

- A. Mastered
- B. Not Mastered

Answer: A

Explanation:

Answer Area

▼	▼	▼	▼
Copy-ContainerFile	-Name Container1 -Path	C:\Folder1:C:\ContainerFolder	Container1
Docker	run -it -v	%windir%\ContainerFolder	Server1
Set-Service			

NEW QUESTION 104

You have an Active Director domain named Contoso.com. The domain contains servers named Server 1, Server2 and Server3 that run Windows Server 2016. Server1 and Server2 are nodes in a Hyper V cluster named Cluster1. You add a Hyper V Replica Broker role named Broker 1 to Cluster 1. Server3 is a Hyper-V server. A virtual machine named VM1 runs on Server3.

Live Migration is enabled on all three servers and it is configured to use Kerberos authentication only. You need to ensure that you can perform the migration of VM1 to Server2.

What should you do?

- A. Modify the Storage Migration settings on Server3
- B. Modify the Cluster Permissions for Cluster1.
- C. Add the Server3 computer account to the Replicator group on Server1 and Server2.
- D. Modify the Delegation settings for the Server3 computer account.

Answer: D

Explanation:

References:

[https://technet.microsoft.com/en-us/library/jj134199\(v=ws.11\).aspx#BKMK_Step1](https://technet.microsoft.com/en-us/library/jj134199(v=ws.11).aspx#BKMK_Step1)

NEW QUESTION 108

HOTSPOT

You implement a Windows Server 2016 failover cluster named Cluster1 as a highly available file server.

You run the Get-Cluster cmdlet and receive the following output.

AddEvictDelay	: 60
AdministrativeAccessPoint	: Dns
AutoAssignNodeSite	: 0
AutoBalancerMode	: 2
AutoBalancerLevel	: 1
ClusSvcHangTimeout	: 135
ClusSvcRegroupStageTimeout	: 5
ClusSvcRegroupTickInMilliseconds	: 300
ClusterEnforcedAntiAffinity	: 0
ClusterFunctionalLevel	: 9
ClusterUpgradeVersion	: 7
ClusterGroupWaitDelay	: 120
ClusterLogLevel	: 3
ClusterLogSize	: 300
DatabaseReadWriteMode	: 0
DefaultNetworkRole	: 3
Description	:
Domain	: contoso.com
EnableSharedVolumes	: Enabled
FixQuorum	: 0
Id	: ec6121be-f816-426b-b550-72cafb943f1b
Name	: cluster1

Use the drop-down menus to select the answer choice that completes each statement based on the information presented in the graphic.

Answer Area

You can perform Cluster-Aware Updating (CAU) in **[answer choice]**.

	▼
self-updating mode only	
remote-updating mode only	
remote-updating mode and self-updating mode	

You can use **[answer choice]** to create a file share in Cluster1.

	▼
DFS Management	
Failover Cluster Manager	
File Server Resource Manager	
Server Manager	

- A. Mastered
- B. Not Mastered

Answer: A

Explanation:

Answer Area

You can perform Cluster-Aware Updating (CAU) in [answer choice].

▼

self-updating mode only

remote-updating mode only

remote-updating mode and self-updating mode

You can use [answer choice] to create a file share in Cluster1.

▼

DFS Management

Failover Cluster Manager

File Server Resource Manager

Server Manager

NEW QUESTION 110

DRAG DROP

Note: This question is part of a series of questions that use the same scenario. For your convenience, the scenario is repeated in each question. Each question presents a different goal and answer choices, but the text of the scenario is exactly the same in each question in this series.

Your network contains an Active Directory domain named contoso.com. The functional level of the forest and the domain is Windows Server 2008 R2. All servers in the domain run Windows Server 2016 Standard. The domain contains 300 client computers that run either Windows 8.1 or Windows 10.

The domain contains nine servers that are configured as shown in the following table.

Name	Configuration	Planned changes
Server1	Domain controller	None
Server2	File server	Run Failover Clustering and Storage Spaces Direct
Server3	File server	Run Failover Clustering and Storage Spaces Direct
Server4	Hyper-V host	Run shielded virtual machines
Server5	Hyper-V host	None
Server6	Member server	Run Active Directory Federation Services (AD FS)
VM1	Virtual machine hosted on Server5	None
VM2	Virtual machine hosted on Server5	None
VM3	Virtual machine hosted on Server5	None

The virtual machines are configured as follows:

- Each virtual machine has one virtual network adapter.
- VM1 and VM2 are part of a Network Load Balancing (NLB) cluster.
- All of the servers on the network can communicate with all of the virtual machines.

You need to install the correct edition of Windows Server 2016 to support the planned changes for Server2, Server3, Server4, and Server5.

Which edition or editions should you choose for each server? To answer, drag the appropriate editions to the correct servers. Each edition may be used once, more than once, or not at all. You may need to drag the split bar between panes or scroll to view content.

Editions

Standard only

Datacenter only

Standard or Datacenter

Answer Area

Server2: Edition

Server3: Edition

Server4: Edition

Server6: Edition

- A. Mastered
B. Not Mastered

Answer: A

Explanation:

Editions

Standard only

Datacenter only

Standard or Datacenter



Answer Area

Server2: Datacenter only

Server3: Datacenter only

Server4: Datacenter only

Server6: Standard or Datacenter

NEW QUESTION 113

Your network contains a new Active Directory domain named contoso.com.

You have a security policy that states that new servers should run Nano Server whenever possible. Which server role can be deployed on a Nano Server?

- A. Active Directory Domain Services
- B. DHCP Server
- C. Network Policy and Access Services
- D. DNSServer / Web Server (IIS)

Answer: D

NEW QUESTION 116

You have a server named Server1 that runs Windows Server 2016.

The Windows Server 2016 installation media is mounted as drive D.

You copy the NanoServerImageGenerator folder from the D:\NanoServer folder to the C:\NanoServer folder.

You need to create a custom Nano Server image that includes the Hyper-V server role. The image will be used to deploy Nano Servers to physical servers.

Which two commands should you run? Each correct answer presents part of the solution.

- A. New-NanoServerImage -Edition Standard -DeploymentType Guest -MediaPath D:\ -TargetPath.\NanoServerImage\NanoServer.wim -Compute
- B. Install-PackageProvider NanoServerPackage
- C. Import-PackageProvider NanoServerPackage
- D. New-NanoServerImage -Edition Standard -DeploymentType Host -MediaPath D:\ -TargetPath.\NanoServerImage\NanoServer.wim-Compute
- E. Import-Module C:\NanoServer\NanoServerImageGenerator

Answer: DE

NEW QUESTION 117

You have a server named Server 1 that runs Windows Server 2016 and has the Hyper-V server role installed.

On Server1, you plan to create a virtual machine named VM1. You need to ensure that you can start VM1 from the network.

What are two possible ways to achieve the goal? Each correct answer presents a complete solution.

- A. Create a generation 2 virtual machine.
- B. Create a generation 1 virtual machine and run theEnable-NetAdapterPackageDirectcmdlet.
- C. Create a generation 1 virtual machine that has a legacy network adapter.
- D. Create a generation 1 virtual machine and configure a single root I/O virtualization (SRV-IO) interface for the network adapter.

Answer: AC

NEW QUESTION 120

You have a Hyper-V host named Server1 that runs Windows Server 2016. Server1 contains four virtual machines that are configured as shown in the following table.

Virtual machine name	Configuration
VM1	A shielded virtual machine that runs Windows Server 2012 R2
VM2	A shielded virtual machine that runs Windows Server 2016
VM3	A virtual machine that runs Windows Server 2012 R2 and has Secure Boot enabled
VM4	A virtual machine that runs Windows Server 2016 and has all of its drivers protected by using BitLocker Drive Encryption (BitLocker)

To which machine or machines can you connect by using Virtual Machine Connection from Hyper-V Manager?

- A. VM1, VM2, VM3 and VM4
- B. VM4 only

- C. VM1 and VM2 only
- D. VM3 and VM4 only
- E. VM2 only

Answer: D

NEW QUESTION 123

Note: This question is part of a series of questions that present the same scenario. Each question in the series contains a unique solution that might meet the stated goals. Some question sets might have more than one correct solution, while others might not have a correct solution.

After you answer a question in this section, you will NOT be able to return to it. As a result, these questions will not appear in the review screen.

You have a server named Server1 that runs Windows Server 2016.

Server1 hosts a line-of-business application named App1. App1 has a memory leak that occasionally causes the application to consume an excessive amount of memory.

You need to log an event in the Application event log whenever App1 consumes more than 4 GB of memory.

Solution: You create a performance counter alert data collector. Does this meet the goal?

- A. Yes
- B. No

Answer: A

NEW QUESTION 125

After you answer a question in this section, you will NOT be able to return to it. As a result, these questions will not appear in the review screen.

You have a server named Server1 that runs Windows Server 2016.

You plan to use Windows Server Backup to back up all of the data on Server1. You create a new volume on Server1.

You need to ensure that the new volume can be used as a backup target. The backup target must support incremental backups.

Solution: You mount the volume to C:\Backup, and you format the volume by using FAT32. Does this meet the goal?

- A. Yes
- B. No

Answer: A

NEW QUESTION 126

After you answer a question in this section, you will NOT be able to return to it. As a result, these questions will not appear in the review screen.

You have a server named Server1 that runs Windows Server 2016.

You plan to use Windows Server Backup to back up all of the data on Server1. You create a new volume on Server1.

You need to ensure that the new volume can be used as a backup target. The backup target must support incremental backups.

Solution: You mount the volume to C:\Backup, and you format the volume by using exFAT. Does this meet the goal?

- A. Yes
- B. No

Answer: B

NEW QUESTION 130

HOTSPOT

You deploy a new Hyper-V host named Server1 that runs Windows Server 2016. You implement receive side scaling (RSS) on Server1.

The chipset on Server1 does not support NetDMA.

All of the equipment on your network supports 10-Gbps connectivity. On Server1, you deploy a virtual machine named VM1.

You configure VM1 to aggregate all of the Windows and non-Windows log files for all of the servers on the network.

VM1 has four virtual processors.

You discover that VM1 drops packets.

Which two options should you run? To answer, select the appropriate options in the answer area.

Answer Area

First action:

Enable TCP Chimney Offload on Server1.
Enable single root I/O virtualization (SR-IOV) on VM1.
Enable virtual machine queue (VMQ) on Server1 and VM1.

Second action:

Enable virtual TCP Chimney Offload on VM1.
Enable virtual Receive-side Scalling (vRSS) on VM1.
Enable single root I/O virtualization (SR-IOV) on Server1.

- A. Mastered
- B. Not Mastered

Answer: A

Explanation:

Answer Area

First action:

Enable TCP Chimney Offload on Server1.
Enable single root I/O virtualization (SR-IOV) on VM1.
Enable virtual machine queue (VMQ) on Server1 and VM1.

Second action:

Enable virtual TCP Chimney Offload on VM1.
Enable virtual Receive-side Scalling (vRSS) on VM1.
Enable single root I/O virtualization (SR-IOV) on Server1.

NEW QUESTION 133

You have a Nano Server that runs Windows Server 2016. The Nano Server runs on a physical machine. You have not Installed any packages on the server. You attach a new disk to the server, and you initialize the disk as a GPT disk. You need to create an RefS-formatted volume on the new disk. What should you do first?

- A. From the physical server, log on to the Nano Server Recovery Console.
- B. Install the Microsoft-Nano'Server-Host-Package package.
- C. Run me Format-Vokime cmdlet and specify the -FileSystem switch.
- D. Install the Microsoft NanoServef-Storage-Package package.

Answer: C

NEW QUESTION 138

You have a server named Server1 that runs Windows Server 2016. The disks on Server1 are configured as shown in the following table.

Volume	Type	File System	Capacity
C:	Attached locally	NTFS	150 GB
D:	Attached locally	exFAT	100 GB
E:	Attached locally	NTFS	20 GB
F:	Attached locally	ReFS	1 TB
G:	iSCSI LUN	NTFS	2 TB

Windows Server 2016 is installed in C:\Windows.

On which two volumes can you enable data deduplication? Each correct answer presents a complete solution.

- A. C:
- B. D:
- C. E:
- D. F:
- E. G:

Answer: CE

NEW QUESTION 143

You have two servers named Server1 and Server2 that run Windows Server 2016.

You plan to implement Storage Replica to replicate the contents of volumes on Server1 to Server2. You need to ensure that the replication traffic between the servers is limited to a maximum of 100 Mbps.

Which cmdlet should you run?

- A. New-NetQosPolicy
- B. Set-NetworkController
- C. New-NetTransportFilter
- D. New-StorageQosPolicy

Answer: A

Explanation:

References: [https://technet.microsoft.com/en-us/library/hh967471\(v=wps.630\).aspx](https://technet.microsoft.com/en-us/library/hh967471(v=wps.630).aspx)

NEW QUESTION 147

DRAG DROP

You have a Hyper-V host named Server1 that runs Windows Server 2016. Server 1 hosts a virtual machine named VM1 that runs Windows Server 2016. Server1 has a USB 3.0 device attached to a PCI Express (PCIe) bus.

You need to provide VM1 with pass-through access to the USB 3.0 device.

Which three actions should you perform in sequence? To answer, move the appropriate actions from the list of actions to the answer area and arrange them in the correct order.

Actions

Answer Area

- On Server1, run the **Dismount-VMHostAssignableDevice** cmdlet.
- On Server1, run the **Add-VMHostAssignableDevice** cmdlet
- On Server1, run the **Disable-PnPDevice** cmdlet
- On VM1, run the **Enable-PnPDevice** cmdlet
- On VM1, ran the **Mount-VMHostAssignable Device** cmdlet

1

2

3

- A. Mastered
- B. Not Mastered

Answer: A

Explanation:

Actions

On Server1, run the **Dismount-VMHostAssignableDevice** cmdlet.

On Server1, run the **Add-VMAssignableDevice** cmdlet

Answer Area

1

On VM1, ran the **Mount-VMHostAssignable Device** cmdlet

2

On VM1, run the **Enable-PnPDevice** cmdlet

3

On Server1, run the **Disable-PnPDevice** cmdlet

NEW QUESTION 152

You have a Hyper-V host named Server1 that runs Windows Server 2016. Server1 hosts a virtual machine. You need to provide VM1 with direct access to a graphics processing unit (GPU) on Server1. What should you do first?

- A. On VM1, install the QUzility Windows Audio Video Experience (qWave) feature.
- B. Dismount the display adapter on Server1.
- C. In the settings of VM1, add a RemoteFX 3D Video Adapter.
- D. Disable the display adapter device on Server1.

Answer: D

Explanation:

Before the physical device is allowed to be passed through to the VM, the device must be disabled on the host system. The physical device must be accessible/available exclusively to the VM only. References:

Introduction to Windows Server 2016 Hyper-V DiscreteDevice Assignment, page 5 <https://lenovopress.com/lp0088.pdf>

NEW QUESTION 156

DRAG DROP

You install a new Nano Server named Nano1. Nano1 is a member of a workgroup and has an IP address of 192.168.1.10.

You have a server named Server1 that runs Windows Server 2016.

From Server1, you need to establish a Windows PowerShell session to Nano1.

How should you complete the PowerShell script? To answer, drag the appropriate cmdlets to the correct targets. Each cmdlet may be used once, more than once, or not at all. You may need to drag the split bar between panes or scroll to view content.

Cmdlets

Enable-PSRemoting

Enter-PSSession

Set-Item

Set-ItemProperty

Set-LocalUser

Answer Area

\$ip = "192.168.1.10"

\$user = "Administrator"

Cmdlet

WSMan:\localhost\Client\TrustedHosts "192.168.1.10"

Cmdlet

-ComputerName \$ip -Credential \$user

- A. Mastered
- B. Not Mastered

Answer: A

Explanation:

How to access Nano Server

Because Nano Server does not support a local session, it must be accessed remotely. References: [https://msdn.microsoft.com/en-us/library/mt708805\(v=vs.85\).aspx](https://msdn.microsoft.com/en-us/library/mt708805(v=vs.85).aspx)

NEW QUESTION 161

HOTSPOT

You have a server named Server1 that runs Windows Server 2016. Server1 is a Hyper-V host. You run the commands shown in the following graphic:

```

Windows PowerShell
Copyright (C) 2016 Microsoft Corporation. All rights reserved.

PS C:\Users\ServerAdmin> New-VmSwitch -Name TEAM1 -NetAdapterName "NIC 1", "NIC 2" -EnableEmbeddedTeaming $true
PS C:\Users\ServerAdmin> Set-VmSwitch -Name TEAM1 -NetAdapterName "NIC 1"
    
```

Use the drop-down menus to select the answer choice that completes each statement based on the information presented in the graphic.

Answer Area

After running the commands, TEAM1 contains [answer choice] network adapters.

	▼
one	
two	
three	

If you run **Add-VmSwitchTeamMember -VmSwitchName TEAM1 -NetAdapterName "NIC4"**, TEAM1 will contain [answer choice] network adapters.

	▼
one	
two	
three	
four	

- A. Mastered
- B. Not Mastered

Answer: A

Explanation:

Answer Area

After running the commands, TEAM1 contains [answer choice] network adapters.

	▼
one	
two	
three	

If you run **Add-VmSwitchTeamMember -VmSwitchName TEAM1 -NetAdapterName "NIC4"**, TEAM1 will contain [answer choice] network adapters.

	▼
one	
two	
three	
four	

NEW QUESTION 164

Note: This question is part of a series of questions that use the same or similar answer choices. An answer choice may be correct for more than one question in the series. Each question is independent of the other questions in this series. Information and details provided in a question apply only to that question.
 You have two servers named Server1 and Server2 that run Windows Server 2016. Server1 and Server2 have the Hyper-V server role installed and are nodes in a failover cluster.

On Server1, an administrator creates a virtual machine named VM1. You need to configure VM1 for high availability.
 Which tool should you use?

- A. the clussvc.exe command
- B. the cluster.exe command
- C. the Computer Management snap-in
- D. the configurehyperv.exe command

- E. the Disk Management snap-in
- F. the Failover Cluster Manager snap-in
- G. the Hyper-V Manager snap-in
- H. the Server Manager app

Answer: F

Explanation:

References:

<http://windowsitpro.com/hyper-v/make-vm-highly-available-windows-server-2012>

NEW QUESTION 166

Note: This question is part of a series of questions that use the same or similar answer choices. An answer choice may be correct for more than one question in the series. Each question is independent of the other questions in this series. Information and details provided in a question apply only to that question.

You have two servers named Server1 and Server2 that run Windows Server 2016. Server1 and Server2 have the Hyper-V server role installed.

An iSCSI SAN connects to the network.

You create a LUN on the SAN and configure both servers to connect to the iSCSI target.

You create a failover cluster and add Server1 and Server2 to the cluster. You connect both servers to the iSCSI target and format the shared storage.

You need to add the shared storage to the cluster. The solution must ensure that virtual machines running on both nodes can access the shared storage simultaneously.

Which tool should you use?

- A. the clussvc.exe command
- B. the cluster.exe command
- C. the Computer Management snap-in
- D. the configurehyperv.exe command
- E. the Disk Management snap-in
- F. the Failover Cluster Manager snap-in
- G. the Hyper-V Manager snap-in
- H. the Server Manager app

Answer: F

Explanation:

References:

[https://technet.microsoft.com/en-us/library/jj612868\(v=ws.11\).aspx](https://technet.microsoft.com/en-us/library/jj612868(v=ws.11).aspx)

NEW QUESTION 170

DRAG DROP

Your network contains an Active Directory domain. The domain contains two domain controllers named DC1 and DC2. DC2 is a virtual machine that is hosted on a Hyper-V host named HyperV1. DC1 holds the PDC emulator operations master role.

You need to create a new domain controller named DC3 by using domain controller cloning.

Which five actions should you perform in sequence before you can import the cloned virtual machine? To answer, move the appropriate actions from the list of actions to the answer area and arrange them in the correct order.

NOTE: More than one order of answer choices is correct. You will receive credit for any of the correct orders you select.

Actions

Stop DC2.

Run the **New-ADDCCloneConfigFile** cmdlet.

Modify the group membership of DC3.

Export DC2.

Run the **Get-ADDCCloningExcludedApplicationList** cmdlet.

Modify the group membership of DC2.

Answer Area



A. Mastered

B. Not Mastered

Answer: A

Explanation:

Actions

Stop DC2.

Run the **New-ADDCCloneConfigFile** cmdlet.

Modify the group membership of DC3.

Export DC2.

Run the **Get-ADDCCloningExcludedApplicationList** cmdlet.

Modify the group membership of DC2.

Answer Area

Modify the group membership of DC2.

Run the **Get-ADDCCloningExcludedApplicationList** cmdlet.

Run the **New-ADDCCloneConfigFile** cmdlet.

Stop DC2.

Export DC2.

NEW QUESTION 175

You have a server named Server1 that runs Windows Server 2016. You need to configure Server1 as a Web Application Proxy. Which server role or role service should you install on Server1?

- A. Web Server (IIS)
- B. Network Policy and Access Services
- C. Direct Access and VPN (RAS)
- D. Active Directory Federation Services
- E. Remote Access

Answer: E

NEW QUESTION 180

Note: This question is part of a series of questions that present the same scenario. Each question in the series contains a unique solution that might meet the stated goals. Some question sets might have more than one correct solution, while others might not have a correct solution. After your answer a question in this section, you will NOT be able to return to it. As a result, these questions will not appear in the review screen. Your network contains an Active Directory forest named contoso.com. You need to identify which server is the schema master. Solution: From Windows PowerShell, you run Get-ADDomainController -Discover -Service 2. Does this meet the goal?

- A. Yes
- B. No

Answer: B

Explanation:

References:
[https://blogs.technet.microsoft.com/mempson/2007/11/08/how-to-find-out-who-has-your-fsmo- roles/](https://blogs.technet.microsoft.com/mempson/2007/11/08/how-to-find-out-who-has-your-fsmo-roles/)

NEW QUESTION 184

Note: This question is part of a series of questions that present the same scenario. Each question in the series contains a unique solution that might meet the stated goals. Some question sets might have more than one correct solution, while others might not have a correct solution. After your answer a question in this section, you will NOT be able to return to it. As a result, these questions will not appear in the review screen. Your network contains an Active Directory forest named contoso.com. You need to identify which server is the schema master. Solution: From a command prompt, you run netdom query fsmo. Does this meet the goal?

- A. Yes
- B. No

Answer: A

Explanation:

References: <https://blogs.technet.microsoft.com/mempson/2007/11/08/how-to-find-out-who-has-your-fsrm-roles/>

NEW QUESTION 189

You have a server named Server1 that runs Windows Server 2016 and is configured as a domain controller.

You install the DNS Server server role on Server1.

You plan to store a DNS zone in a custom Active Directory partition. You need to create a new Active Directory partition for the zone. What should you use?

- A. Set-DnsServer
- B. Active Directory Sites and Services
- C. Dns.exe
- D. Dnscmd.exe

Answer: D

Explanation:

[https://technet.microsoft.com/en-us/library/ee649181\(v=ws.10\).aspx](https://technet.microsoft.com/en-us/library/ee649181(v=ws.10).aspx)

NEW QUESTION 194

HOTSPOT

Your network contains an Active Directory named contoso.com. The domain contains two servers named Server1 and Server2 that run Windows Server 2016.

Server1 has IP Address Management (IPAM) installed. Server2 has the DHCP Server role installed. The IPAM server retrieves data from Server2.

The domain has two users named User1 and User2 and a group named Group1. User1 is the only member of Group1.

Server1 has one IPAM access policy. You edit the access policy as shown in the Policy exhibit. (Click the Exhibit button.)

Edit Access Policy

Show All

User Settings

Access Settings

Click Add to add a user

* User alias: CONTOSO\Group1 Add

Description:

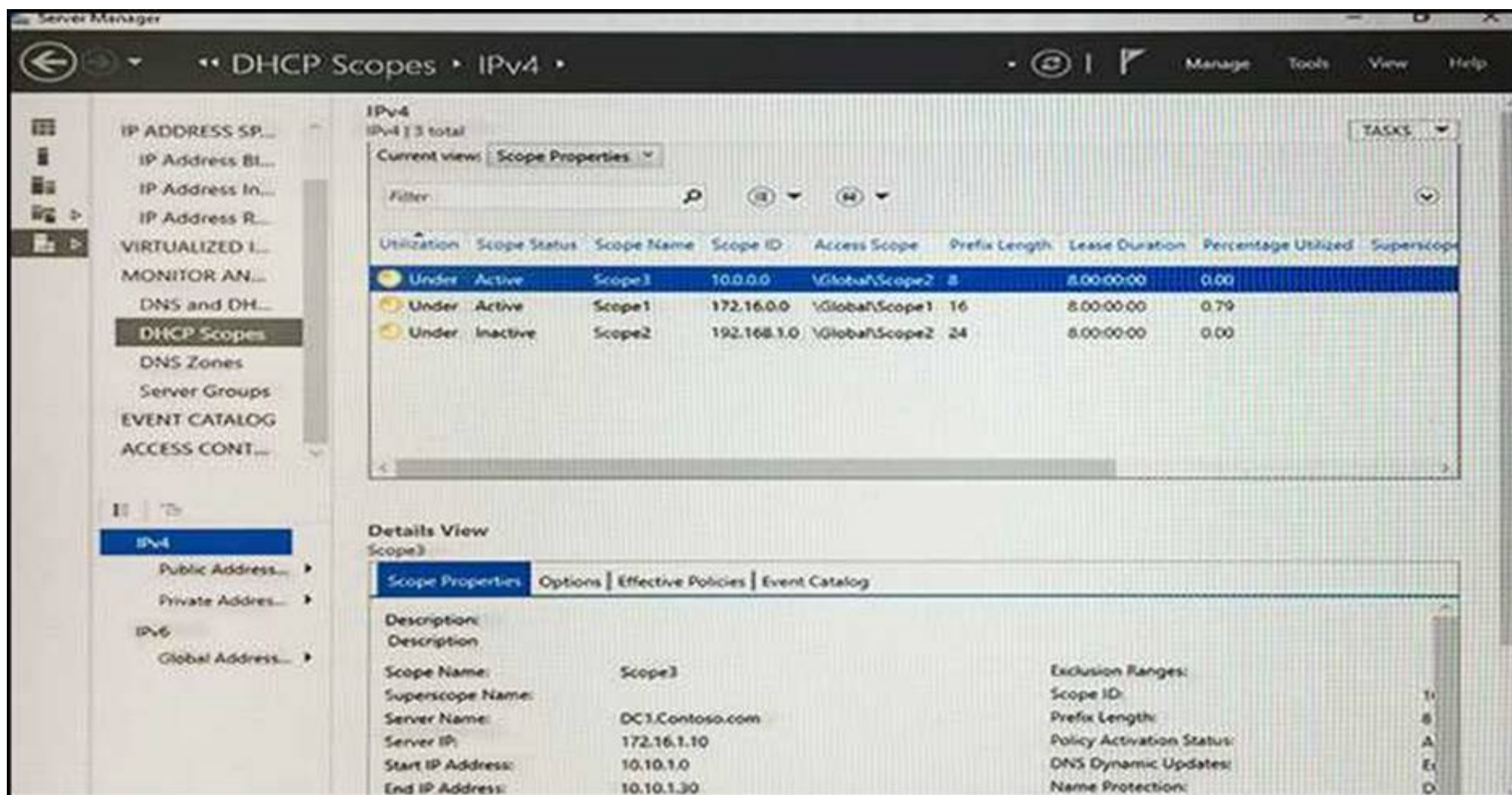
Access Settings

Specify the access settings for the access policy:

Role	Access Scope
IPAM DHCP Scope Administra...	\Global\Scope2

OK Cancel Apply

The DHCP scopes are configured as shown in the Scopes Exhibit. (Click the Exhibit button.)



For each of the following statements, select Yes if the statement is true. Otherwise, select No.

Answer Area

Statements

Yes

No

User1 can modify the description of Scope1.

☐
☐

User2 can modify the description of Scope1.

☐
☐

User1 can modify the description of Scope2.

☐
☐

- A. Mastered
- B. Not Mastered

Answer: A

Explanation:

[https://technet.microsoft.com/en-us/library/dn268500\(v=ws.11\).aspx](https://technet.microsoft.com/en-us/library/dn268500(v=ws.11).aspx)

NEW QUESTION 196

You have two servers named Server1 and Server2 that run Windows Server 2016.

You plan to implement Storage Replica to replicate the contents of volumes on Server1 to Server2. You need to ensure that the replication traffic between the servers is limited to a maximum of 100 Mbps.

Which cmdlet should you run?

- A. Set-NetUDPSetting
- B. New-StorageQosPolicy
- C. Set-SmbBandwidthLimit
- D. Set-NetTCPSetting

Answer: C

NEW QUESTION 198

A company named Contoso, Ltd has five Hyper-V hosts that are configured as shown in the following table.

Hyper-V host name	Configuration
Server1	Windows Sever 2012 R2 and an Intel Xeon E7 processor
Server2	Windows Sever 2012 R2 and an Intel i7 processor
Server3	Windows Sever 2016 and an Intel i7 processor
Server4	Windows Sever 2016 and an AMD Opteron processor
Server5	Windows Sever 2012 R2 and an Intel Xeon E7 processor

What are two valid live migration scenarios for virtual machines in your environment? Each correct answer presents a complete solution.

- A. from Server4 to Server5
- B. from Server1 to Server5
- C. from Server3 to Server4
- D. from Server2 to Server3

Answer: BD

NEW QUESTION 199

You have a Hyper-V host named Server1 that runs Windows Server 2016. Server1 hosts a virtual machine named VM1. VM1 is in a workgroup. VM1 is currently in a running state.

You need to create 10 copies of VM1 on Server1 in the least amount of time possible. Which cmdlets should you use?

- A. Stop-VM, and then Import-VM
- B. Export-VM, and then Import-VM
- C. Checkpoint-VM, and then New-VM
- D. Copy-VMFile, and then New-VM

Answer: B

NEW QUESTION 203

You deploy two servers that run Windows Server 2016. You install the Failover Clustering feature on both servers. You need to create a workgroup cluster. What should you do?

- A. Configure both of the server to be in a workgroup named Workgrou
- B. Configure the Cluster Service to log on as Network Servic
- C. Run the New-Cluster cmdlet and specify an administrative access point of None.
- D. Create matching local administrative accounts on both of the server
- E. Assign the same primary DNS suffix to both of the server
- F. Run the New-Cluster cmdlet and specify an administrative access point of DNS.
- G. Configure both of the server to be in a workgroup named Workgrou
- H. Configure the Cluster Service to log on as Network Servic
- I. Run the New-Cluster cmdlet and specify an administrative access point of DNS.
- J. Create matching local administrative accounts on both of the server
- K. Assign the same primary DNS suffix to both of the server
- L. Run the New-Cluster cmdlet and specify an administrative access point of None

Answer: B

Explanation:

References:

<https://rlevchenko.com/2015/09/07/workgroup-and-multi-domain-clusters-in-windows-server-2016/>

NEW QUESTION 204

HOTSPOT

You have a Windows Server 2016 failover cluster that contains two servers named Server1 and Server2.

You need to apply patches to Server1.

Which two commands should you run before you apply the patches? To answer, select the appropriate options in the answer area.

Answer Area

First command:

	▼
Invoke-Command Server2 { Start-ClusterGroup }	
Invoke-Command Server2 { Start-ClusterResource }	
Move-ClusterGroup -Node Server2	
Set-ClusterOwnerNode -Owner Server2	
Set-ClusterParameter -Name Owner -Value Server2	

Second command:

	▼
Stop-ClusterGroup	
Stop-ClusterResource	
Suspend-ClusterNode	
Suspend-ClusterResource	

- A. Mastered
- B. Not Mastered

Answer: A

Explanation:

Answer Area

First command:

	▼
Invoke-Command Server2 { Start-ClusterGroup }	
Invoke-Command Server2 { Start-ClusterResource }	
Move-ClusterGroup -Node Server2	
Set-ClusterOwnerNode -Owner Server2	
Set-ClusterParameter -Name Owner -Value Server2	

Second command:

	▼
Stop-ClusterGroup	
Stop-ClusterResource	
Suspend-ClusterNode	
Suspend-ClusterResource	

NEW QUESTION 209

DRAG DROP

You have a file server named Server1 that runs Windows Server 2016.

You need to create a report that lists all of the share permissions assigned to the security principals on Server1.

How should you complete the command? To answer, drag the appropriate cmdlets to the correct targets. Each cmdlet may be used once, more than once, or not at all. You may need to drag the split bar between panes or scroll to view content.

Cmdlets

- Get-Acl
- Get-SmbClientConfiguration
- Get-SmbShare
- Set-SmbPathAcl
- Get-Credential
- Get-SmbDelegation
- Get-SmbShareAccess

Answer Area

Cmdlet

|

Cmdlet

- A. Mastered
B. Not Mastered

Answer: A

Explanation:

Cmdlets

- Get-Acl
- Get-SmbClientConfiguration
- Get-SmbShare
- Set-SmbPathAcl
- Get-Credential
- Get-SmbDelegation
- Get-SmbShareAccess

Answer Area

Get-SmbShare

|

Get-SmbShareAccess

NEW QUESTION 210

Nano Server is foundational to the modern datacenter and is useful in two core scenarios: As a private cloud infrastructure it's particularly useful for clustered Hyper-V, clustered storage and core networking services scenarios; or as an application platform it's highly optimized for modern distributed and cloud-based apps which leverage containers and micro service architectures.
Is the following statement TRUE or FALSE?
A local interface with UI support is available for offline management of Nano Servers?

- A. TRUE
B. FALSE

Answer: B

Explanation:

A local interface with UI support is NOT available for Nano servers. You must administer them remotely using PowerShell.

NEW QUESTION 215

Virtual Network Manager (available from the Hyper-V Manager snap-in) offers three types of virtual networks that you can use to define various networking topologies for virtual machines and the virtualization server.
Which type of virtual network is isolated from all external network traffic on the virtualization server, as well any network traffic between the management operating system and the external network.

- A. Private virtual network
- B. Internal virtual network

Answer: A

NEW QUESTION 217

You have decided to install Windows Server 2016 by choosing the Service Core Installation option. If you want to install, configure or uninstall server roles remotely, what tool would you use?

- A. Any of these
- B. Windows PowerShell
- C. Remote Server Administration Tools (RSAT)
- D. Server Manager

Answer: A

NEW QUESTION 222

When you create a new SET team, you must configure the following team properties: Member adapters and Load balancing mode. Which Load balancing mode ensures that outbound loads are distributed based on a hash of the TCP Ports and IP addresses. This mode also re-balances loads in real time so that a given outbound flow can move back and forth between SET team members.

- A. Dynamic
- B. Hyper-V Port

Answer: A

NEW QUESTION 225

You want to boot a Linux Operating System with the Secure Boot option enabled in a virtual machine. This will be the first time you boot the OS. What must you do?

- A. Set the -BootOrder to HardDiskDrive
- B. Configure the virtual machine to use the Microsoft UEFI Certificate Authority
- C. You can't enable Secure Boot with Linux
- D. Set -EnableSecureBoot without specifying a template

Answer: B

Explanation:

Linux operating systems running on newer generation virtual machines can boot with the Secure Boot option enabled. Before you boot the virtual machine for the first time, you must configure the virtual machine to use the Microsoft UEFI Certificate Authority. You can do this from Hyper-V Manager, Virtual Machine Manager, or an elevated Windows Powershell session.

NEW QUESTION 226

HOTSPOT

You have two servers named Server1 and Server2 that run Windows Server 2016. Server1 hosts two containers named Container1 and Container2. The servers and the containers are configured as shown in the following table.

Name	IP address	IP subnet mask
Server1	10.10.50.20	255.255.255.0
Server2	10.10.50.21	255.255.255.0
Container1	172.16.1.100	255.255.255.0
Container2	172.16.1.101	255.255.255.0

Container1 hosts a website on port 8080.

You create a port mapping between port 8080 on Container1 and port 80 on Server1.

Which URL can you use to access the website from Server1, Server2, and Container2? To answer, select the appropriate options in the answer area.

NOTE: Each correct selection is worth one point.

Answer Area

Server1:

http://10.10.50.20:80 only
http://10.10.50.20:8080 only
http://172.16.1.100:80 only
http://172.16.1.100:8080 only
http://10.10.50.20:80 and http://172.16.1.100:8080
http://10.10.50.20:8080 and http://172.16.1.100:80

Server2:

http://10.10.50.20:80 only
http://10.10.50.20:8080 only
http://172.16.1.100:80 only
http://172.16.1.100:8080 only
http://10.10.50.20:80 and http://172.16.1.100:8080
http://10.10.50.20:8080 and http://172.16.1.100:80

Server3:

http://10.10.50.20:80 only
http://10.10.50.20:8080 only
http://172.16.1.100:80 only
http://172.16.1.100:8080 only
http://10.10.50.20:80 and http://172.16.1.100:8080
http://10.10.50.20:8080 and http://172.16.1.100:80

- A. Mastered
- B. Not Mastered

Answer: A

Explanation:

Answer Area

Server1:

http://10.10.50.20:80 only
http://10.10.50.20:8080 only
http://172.16.1.100:80 only
http://172.16.1.100:8080 only
http://10.10.50.20:80 and http://172.16.1.100:8080
http://10.10.50.20:8080 and http://172.16.1.100:80

Server2:

http://10.10.50.20:80 only
http://10.10.50.20:8080 only
http://172.16.1.100:80 only
http://172.16.1.100:8080 only
http://10.10.50.20:80 and http://172.16.1.100:8080
http://10.10.50.20:8080 and http://172.16.1.100:80

Server3:

http://10.10.50.20:80 only
http://10.10.50.20:8080 only
http://172.16.1.100:80 only
http://172.16.1.100:8080 only
http://10.10.50.20:80 and http://172.16.1.100:8080
http://10.10.50.20:8080 and http://172.16.1.100:80

NEW QUESTION 229

You plan to install a Nano Server on a physical server named Nano1. Nano1 will host several virtual machines that will use live migration. Which package should you install on Nano1?

- A. Microsoft-NanoServer-SecureStartup-Package
- B. Microsoft-NanoServer-ShieldedVM-Package
- C. Microsoft-NanoServer-Compute-Package
- D. Microsoft-NanoServer-FailoverCluster-Package
- E. Microsoft-NanoServer-Storage –Package

Answer: C

NEW QUESTION 232

You create a Storage Spaces Direct hyper-converged failover cluster. The cluster contains three nodes and a 1-TB Storage Spaces Direct volume. The cluster will store virtual machines.

You plan to extend the volume by adding an additional 3 TB.

What is the minimum amount of extra disk capacity required to accommodate extending the volume?

- A. 3TB on the coordinator node
- B. 3 TB per node
- C. 4 TB per node
- D. 4 TB on the coordinator node

Answer: B

Explanation:

References:

<https://docs.microsoft.com/en-us/windows-server/storage/storage-spaces/drive-symmetry-considerations>

NEW QUESTION 234

You have a Hyper-V host that runs Windows Server 2016.

You need to identify the amount of processor resources consumed by Hyper-V and virtual machines. Which counter should you use from Performance Monitor?

- A. \Hyper-V Hypervisor\Logical Processor

- B. \Hyper-V Hypervisor Root Virtual Processor(_Total)\% Guest Run Time
- C. \Hyper-V Hypervisor Virtual Processor(_Total)\% Hypervisor Run Time
- D. \Hyper-V Hypervisor Virtual Processor(_Total)\% Total Run Time
- E. \Hyper-V Hypervisor Logical Processor(_Total)\% Total Run Time

Answer: A

Explanation:

References:

[https://msdn.microsoft.com/en-us/library/cc768535\(v=bts.10\).aspx](https://msdn.microsoft.com/en-us/library/cc768535(v=bts.10).aspx)

NEW QUESTION 237

You have a server named Server1 that runs Windows Server 2016.

On Server1, you use the Basic template to create a new Data Collector Set named CollectorSet1. You need to configure CollectorSet1 to generate performance alerts.

What should you do before you start CollectorSet1?

- A. Modify the performance counter data collector of CollectorSet1.
- B. Add a new data collector to CollectorSet1.
- C. Modify the configuration data collector of CollectorSet1.
- D. Add a new task to CollectorSet1.

Answer: A

Explanation:

[https://technet.microsoft.com/en-us/library/cc722414\(v=ws.11\).aspx](https://technet.microsoft.com/en-us/library/cc722414(v=ws.11).aspx)

NEW QUESTION 242

You have a Hyper-V host named Server1 that runs Windows Server 2016. Server1 hosts a virtual machine named VM1 that runs Windows Server 2016. You install the Hyper-V server role on VM1.

You need to ensure that the virtual machines hosted on VM1 can communicate with the virtual machines hosted on Server1.

What should you do?

- A. On Server1, run the Set-VmNetworkAdapterIsolation cmdlet and specify the –MultiTenantStack Off parameter.
- B. On VM1, run the Set-VMNetworkAdapter cmdlet and specify the –MacAddressSpoofing Off parameter.
- C. On VM1, run the Set-VmNetworkAdapterIsolation cmdlet and specify the –MultiTenantStack On parameter.
- D. On Server1, run the Set-VMNetworkAdapter cmdlet and specify the –MacAddressSpoofing On parameter.

Answer: C

Explanation:

References: <https://docs.microsoft.com/en-us/powershell/module/hyper-v/set-vmnetworkadapterisolation?view=win10-ps>

NEW QUESTION 243

You have two Hyper-V hosts named Server1 and Server2 that run Windows Server 2016. Server1 hosts a virtual machine named VM1 that is in a Running state.

On Server1, you export VM1 and then you import VM1 on Server2. What is the current state of VM1 on Server2?

- A. Off
- B. Running
- C. Paused
- D. Saved

Answer: B

NEW QUESTION 246

HOTSPOT

You have a Windows Server 2016 failover cluster that has a cluster network named ClusterNetwork1. You need to ensure that ClusterNetwork1 is enabled for cluster communication only.

What command should you run? To answer, select the appropriate options in the answer area.

Answer Area

(

Get-ClusterNetwork
Get-ClusterResource
Set-ClusterParameter
Update-ClusterIPResource

 ClusterNetwork1) .

ID
Metric
Role
State

 =1

- A. Mastered
- B. Not Mastered

Answer: A

Explanation:

Answer Area

() . =1

Get-ClusterNetwork	ID
Get-ClusterResource	Metric
Set-ClusterParameter	Role
Update-ClusterIPResource	State

NEW QUESTION 251

HOTSPOT

You are deploying Network Load Balancing (NLB) to three web servers named Server1, Server2, and Server3. The web servers have the following IP addresses:

Server1: 192.168.2.101

Server2: 192.168.2.102 Server3:192.168.2.103

The IP address used by NLB is 192.168.2.120.

Which IP address or addresses will be configured on each server? To answer, select the appropriate options in the answer area.

Answer Area

Server1:

<input type="text"/>
192.168.2.101 only
192.168.2.120 only
192.168.2.101 and 192.168.2.120 only
192.168.2.101, 192.168.2.102, and 192.168.2.103 only
192.168.2.101, 192.168.2.102, 192.168.2.103 and 192.168.2.120

Server2:

<input type="text"/>
192.168.2.102 only
192.168.2.120 only
192.168.2.102 and 192.168.2.120 only
192.168.2.101, 192.168.2.102, and 192.168.2.103 only
192.168.2.101, 192.168.2.102, 192.168.2.103 and 192.168.2.120

Server3:

<input type="text"/>
192.168.2.103 only
192.168.2.120 only
192.168.2.103 and 192.168.2.120 only
192.168.2.101, 192.168.2.102, and 192.168.2.103 only
192.168.2.101, 192.168.2.102, 192.168.2.103 and 192.168.2.120

- A. Mastered
- B. Not Mastered

Answer: A

Explanation:

Answer Area

Server1:	<div>▼</div> <div>192.168.2.101 only</div> <div>192.168.2.120 only</div> <div>192.168.2.101 and 192.168.2.120 only</div> <div>192.168.2.101, 192.168.2.102, and 192.168.2.103 only</div> <div>192.168.2.101, 192.168.2.102, 192.168.2.103 and 192.168.2.120</div>
Server2:	<div>▼</div> <div>192.168.2.102 only</div> <div>192.168.2.120 only</div> <div>192.168.2.102 and 192.168.2.120 only</div> <div>192.168.2.101, 192.168.2.102, and 192.168.2.103 only</div> <div>192.168.2.101, 192.168.2.102, 192.168.2.103 and 192.168.2.120</div>
Server3:	<div>▼</div> <div>192.168.2.103 only</div> <div>192.168.2.120 only</div> <div>192.168.2.103 and 192.168.2.120 only</div> <div>192.168.2.101, 192.168.2.102, and 192.168.2.103 only</div> <div>192.168.2.101, 192.168.2.102, 192.168.2.103 and 192.168.2.120</div>

NEW QUESTION 255

HOTSPOT

You plan to deploy three servers named Server1, Server2, and Server3 that will run Windows Server 2016. The servers will have the following disk configurations:

Server1 will have a C: drive of 2 TB.

Server2 will have two disks. The C: drive will be 2 TB. The D: drive will be 1TB. D: must support file system-based compression.

Server3 will have two disks. The C: drive will be 2 TB. The D: drive will be 1TB and must support file- system based quotas.

Which file system can you use for each drive? To answer, select the appropriate options in the answer area.

Answer Area

C: on all servers:	<div>▼</div> <div>NTFS only</div> <div>ReFS only</div> <div>Either NTFS or ReFS</div>
D: on Server2:	<div>▼</div> <div>NTFS only</div> <div>ReFS only</div> <div>Either NTFS or ReFS</div>
D: on Server3:	<div>▼</div> <div>NTFS only</div> <div>ReFS only</div> <div>Either NTFS or ReFS</div>

- A. Mastered
- B. Not Mastered

Answer: A

Explanation:

Answer Area

C: on all servers:

▼

NTFS only

ReFS only

Either NTFS or ReFS

D: on Server2:

▼

NTFS only

ReFS only

Either NTFS or ReFS

D: on Server3:

▼

NTFS only

ReFS only

Either NTFS or ReFS

NEW QUESTION 256

You have a Windows container host named Server1.
On Server1, you create a container named Container1.
You need to mount C:\ContainerFiles from Server1 to Container1. What should you run?

- A. dockerd --storage-opt dm.mountopt=ContainerFiles
- B. docker run -it -v c:\ContainerFiles Container1
- C. dockerd --storage-opt dm.datadev=/c/ContainerFiles
- D. docker run -it -vc:\ContainerFiles:c:\ContainerFiles Container1

Answer: D

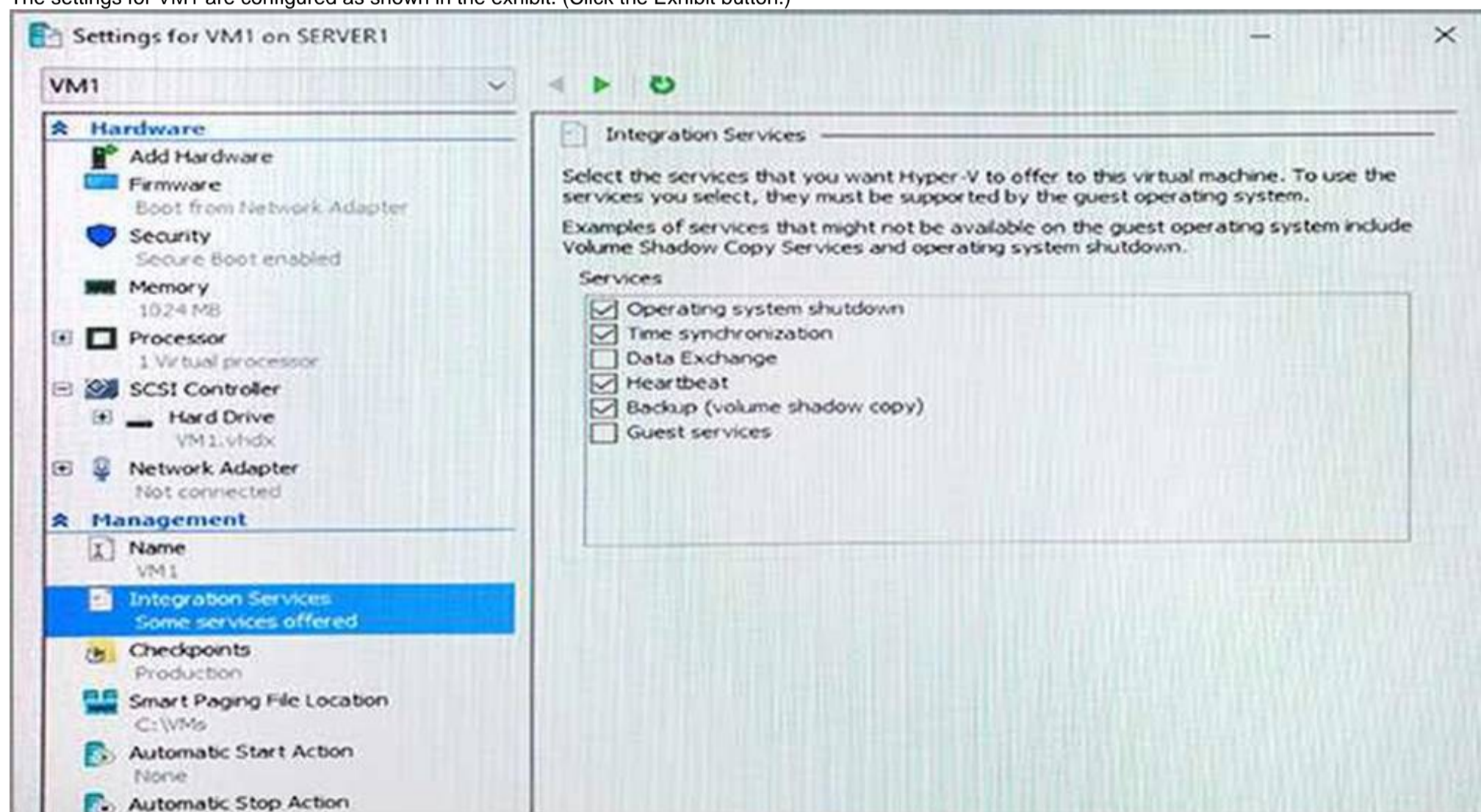
NEW QUESTION 261

Note: This question is part of a series of questions that present the same scenario. Each question in the series contains a unique solution that might meet the stated goals. Some question sets might have more than one correct solution, while others might not have a correct solution.

After you answer a question in this section, you will NOT be able to return to it. As a result, these questions will not appear in the review screen.

You have a Hyper-V host named Server1 that hosts a virtual machine named VM1. Server1 and VM1 run Windows Server 2016.

The settings for VM1 are configured as shown in the exhibit. (Click the Exhibit button.)



You need to ensure that you can use the Copy-VMFile cmdlet on Server1 to copy files from VM1. Solution: You enable the Data Exchange integration service for VM1.
 Does this meet the goal?

- A. Yes
- B. No

Answer: B

Explanation:

References:

[https://technet.microsoft.com/en-us/library/dn798297\(v=ws.11\).aspx](https://technet.microsoft.com/en-us/library/dn798297(v=ws.11).aspx)

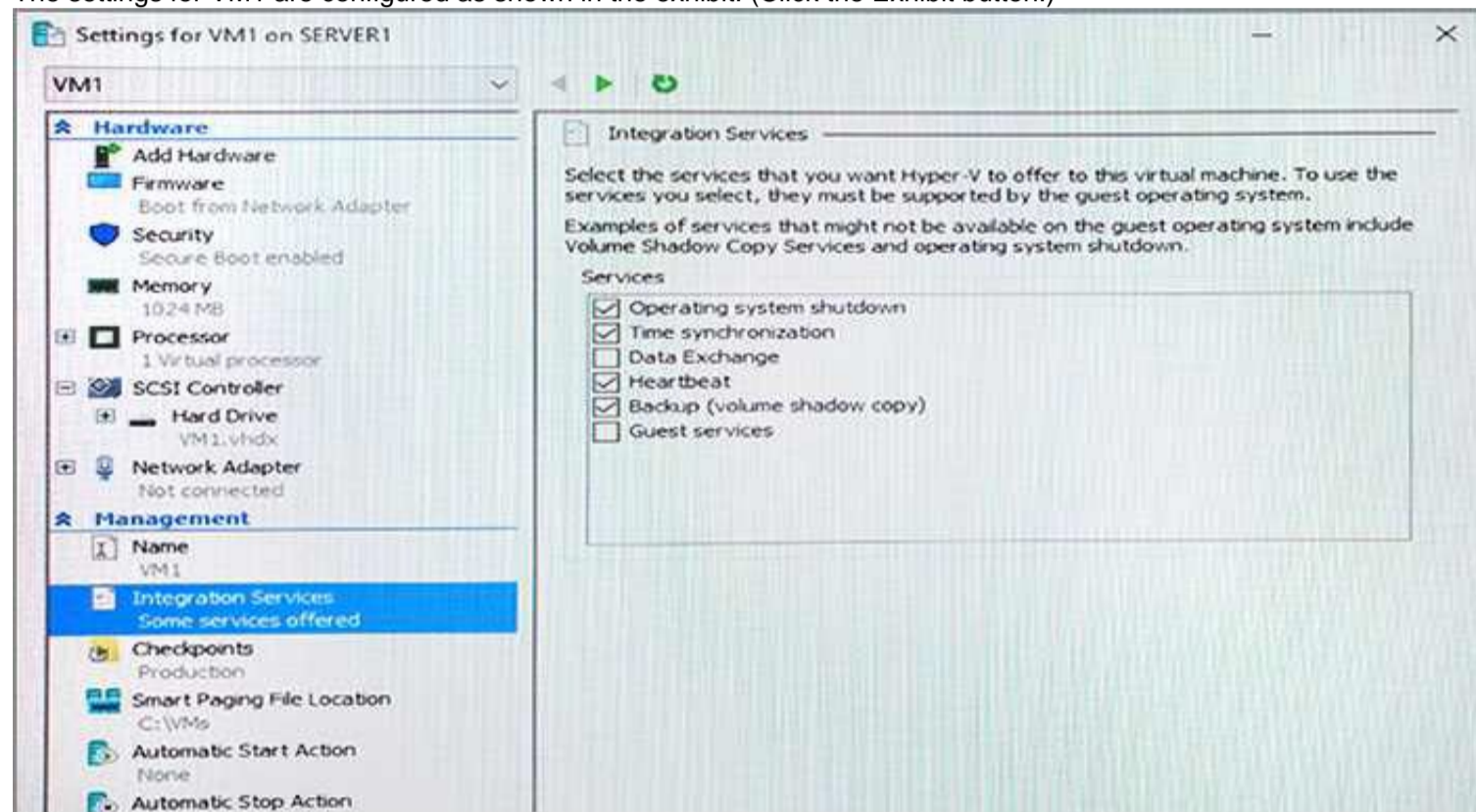
NEW QUESTION 266

Note: This question is part of a series of questions that present the same scenario. Each question in the series contains a unique solution that might meet the stated goals. Some question sets might have more than one correct solution, while others might not have a correct solution.

After you answer a question in this section, you will NOT be able to return to it. As a result, these questions will not appear in the review screen.

You have a Hyper-V host named Server1 that hosts a virtual machine named VM1. Server1 and VM1 run Windows Server 2016.

The settings for VM1 are configured as shown in the exhibit. (Click the Exhibit button.)



You need to ensure that you can use the Copy-VMFile cmdlet on Server1 to copy files from VM1.

Solution: You start the Hyper-V Guest Service Interface service on VM1. Does this meet the goal?

- A. Yes
- B. No

Answer: A

Explanation:

References:

[https://technet.microsoft.com/en-us/library/dn798297\(v=ws.11\).aspx](https://technet.microsoft.com/en-us/library/dn798297(v=ws.11).aspx)

NEW QUESTION 268

Note: This question is part of a series of questions that present the same scenario. Each question in the series contains a unique solution that might meet the stated goals. Some question sets might have more than one correct solution, while others might not have a correct solution.

After you answer a question in this section, you will NOT be able to return to it. As a result, these questions will not appear in the review screen.

You have a server named Server1 that runs Windows Server 2016.

Server1 hosts a line-of-business application named App1. App1 has a memory leak that occasionally causes the application to consume an excessive amount of memory.

You need to log an event in the Application event log whenever App1 consumes more than 4 GB of memory.

Solution: You create an event trace data collector. Does this meet the goal?

- A. Yes
- B. No

Answer: B

NEW QUESTION 271

Note: This question is part of a series of questions that present the same scenario. Each question in the series contains a unique solution that might meet the stated goals. Some question sets might have more than one correct solution, while others might not have a correct solution.

After you answer a question in this section, you will NOT be able to return to it. As a result, these questions will not appear in the review screen.

You are a server administrator at a company named Contoso, Ltd.

Contoso has a Windows Server 2016 Hyper-V environment configured as shown in the following table.

Hyper-V host name	Configuration	Virtual switch name
Host1	- Uses an Intel processor - Is a member of a SAN named SAN1	Switch1
Host2	- Uses an AMD processor - Has local storage only	Switch2
Host3	- Uses an Intel processor - Is a member of a SAN named SAN1	Switch1
Host4	- Uses an Intel processor - Has local storage only	Switch2

All of the virtual switches are of the external type.

You need to ensure that you can move virtual machines between the hosts without causing the virtual machines to disconnect from the network.

Solution: You implement live migration by using Host1 and Host3. Does this meet the goal?

A. Yes

B. No

Answer: A

NEW QUESTION 272

Note: This question is part of a series of questions that present the same scenario. Each question in

the series contains a unique solution that might meet the stated goals. Some question sets might have more than one correct solution, while others might not have a correct solution.

After you answer a question in this section, you will NOT be able to return to it. As a result, these questions will not appear in the review screen.

You are a server administrator at a company named Contoso, Ltd.

Contoso has a Windows Server 2016 Hyper-V environment configured as shown in the following table.

Hyper-V host name	Configuration	Virtual switch name
Host1	- Uses an Intel processor - Is a member of a SAN named SAN1	Switch1
Host2	- Uses an AMD processor - Has local storage only	Switch2
Host3	- Uses an Intel processor - Is a member of a SAN named SAN1	Switch1
Host4	- Uses an Intel processor - Has local storage only	Switch2

All of the virtual switches are of the external type.

You need to ensure that you can move virtual machines between the hosts without causing the virtual machines to disconnect from the network.

Solution: You implement live migration by using Host2 and Host4. Does this meet the goal?

A. Yes

B. No

Answer: A

NEW QUESTION 275

Note: This question is part of a series of questions that present the same scenario. Each question in

the series contains a unique solution that might meet the stated goals. Some question sets might have more than one correct solution, while others might not have a correct solution.

After you answer a question in this section, you will NOT be able to return to it. As a result, these questions will not appear in the review screen.

After you answer a question in this section, you will NOT be able to return to it. As a result, these questions will not appear in the review screen.

Your network contains an Active Directory domain. The domain contains a new file server named Server1 that runs a Server Core installation of Windows Server 2016.

Server1 has an ReFS-formatted volume D: and an NTFS-formatted volume E:. the- volumes do not contain any data.

You Install the Data Deduplication role service on Server1.

You need to implement Data Deduplication for volumes on D: and E:.

Solution; From Windows PowerShell. you run Format-Volume D: -FileSystem NTFS and Enable- DeDupVolume-Volume D:;E:.

Does this meet the goal?

A. Yes

B. No

Answer: A

NEW QUESTION 278

Note: This question is part of a series of questions that present the same scenario. Each question in the series contains a unique solution that might meet the stated goals. Some question sets might have more than one correct solution, while others might not have a correct solution.

After you answer a question in this section, you will NOT be able to return to it. As a result, these questions will not appear in the review screen.

You have a server named Server 1 that runs Windows Server 2016.

You plan to use Windows Server Backup to back up all of the data on Server 1. You create a new volume on Server 1.

You need to ensure that the new volume can be used as a backup target. The backup target must support incremental backups.

Solution: You assign a drive letter to the volume, and you format the volume by using ex FAT. Does this meet the goal?

A. Yes

B. No

Answer: B

NEW QUESTION 283

Note: This question is part of a series of questions that present the same scenario. Each question in the series contains a unique solution that might meet the stated goals. Some question sets might have more than one correct solution, while others might not have a correct solution.

After you answer a question in this section, you will NOT be able to return to it. As a result, these questions will not appear in the review screen.

You have a server named Server 1 that runs Windows Server 2016.

You plan to use Windows Server Backup to back up all of the data on Server 1. You create a new volume on Server 1.

You need to ensure that the new volume can be used as a backup target. The backup target must support incremental backups.

Solution: You mount the volume to C:\backup. and you format the volume by using FAT32. Does this meet the goal?

A. Yes

B. No

Answer: B

NEW QUESTION 287

You have Nano Server image named Disk1.vhdx.

You mount Disk1.vhdx.

You need to add a folder that contains several files to the image. Which tool or cmdlet you should use?

A. File Explore.

B. Add-Windows Image

C. Nano Server Image Builder

D. Server Manager

Answer: D

NEW QUESTION 292

DRAG DROP

Note: This question is part of a series of questions that use the same scenario. For your convenience, the scenario is repeated in each question. Each question presents a different goal and answer choices, but the text of the scenario is exactly the same in each question in this series.

A company named Contoso, Ltd. has several servers that run Windows Server 2016. Contoso has a Hyper-V environment that uses failover clustering and Windows Server Update Services (WSUS). The environment contains several Windows containers and several virtual machines.

The WSUS deployment contains one upstream server that is located on the company's perimeter network and several downstream servers located on the internal network. A firewall separates the upstream server from the downstream servers.

You plan to deploy a human resources application to a new server named HRServer5. HRServer5 contains a FAT32-formatted data volume.

The CIO of Contoso identifies the following requirements for the company's IT department: Deploy a failover cluster to two new virtual machines.

Store all application databases by using Encrypted File System (EFS).

Ensure that each Windows container has a dedicated IP address assigned by a DHCP server.

Produce a report that lists the processor time used by all of the processes on a server named Server1 for five hours.

Encrypt all communication between the internal network and the perimeter network, including all WSUS communications.

Automatically load balance the virtual machines hosted in the Hyper-V cluster when processor utilization exceeds 70 percent.

You need to configure the storage solution for the planned failover cluster.

You create two new generations 2 virtual machines on two separate Hyper-V hosts named VM11 and VM12.

Which three actions should you perform in sequence next? To answer, move the appropriate actions from the list of actions to the answer area and arrange them in the correct order.

Actions

Answer Area

For each virtual machine, create a new system disk that uses the VNDX format and store the disks in Share1.

Create a VHDX file and store the file in the Clustered Shared Volume (CSV).

For each virtual machine, create a new system disk that uses the VHDX format and store the virtual machines on the Cluster Shared Volume (CSV).

Create a network share named Share1.

Create a Clustered Shared Volume (CSV).

To each virtual machine, add the VHDX file as a shared drive.

1	
2	
3	

- A. Mastered
 B. Not Mastered

Answer: A

Explanation:

Actions

Answer Area

For each virtual machine, create a new system disk that uses the VNDX format and store the disks in Share1.

Create a network share named Share1.

To each virtual machine, add the VHDX file as a shared drive.

1	Create a Clustered Shared Volume (CSV).
2	For each virtual machine, create a new system disk that uses the VHDX format and store the virtual machines on the Cluster Shared Volume (CSV).
3	Create a VHDX file and store the file in the Clustered Shared Volume (CSV).

NEW QUESTION 296

Note This question is part of a series of questions that use the same scenario. For your convenience, the scenario is repeated in each question. Each question

presents a different goal and answer choices, but the text of the scenario is exactly the same in each question in this series.

Start of Repeated Scenario:

A company named Contoso, Ltd. has several servers that run Windows Server 2016 Contoso has a Hyper V environment that uses failover clustering and Windows Server Update Services (WSUS). The environment contains several Windows containers and several virtual machines.

The WSUS deployment contains one upstream server that is located on the company's perimeter network and several downstream servers located on the internal network, A firewall separates the upstream server from the downstream servers.

You plan to deploy a human resources application to a new server named HRServer5. HRServer5 contains a FAT32-formatted data volume.

The CIO of Contoso identifies the following requirements for the company's IT department:

- Deploy failover cluster to two new virtual machines.
- Store all application databases by using Encrypted File System (EFS).
- Ensure that each Windows container has a dedicated IP address assigned by a DHCP server
- Produce a report that lists the processor time used by all of the processes on a server named Server 1 for five hour.

Encrypt all communication between the internal network and the perimeter network, including all WSUS communications.

- Automatically load balance the virtual machines hosted in the Hyper-V cluster when processor utilization exceeds 70 percent.

End of Repeated Scenario.

You need to modify the Hyper V cluster to meet the load balancing requirement for the virtual machine. Which command should you run?

- A. Create a firewall rule 10 allow TCP port 443.
- B. Create a firewall rule to allow TCP port 8531.
- C. Require- SSI Oil the Client WebService virtual directory.
- D. Require SSI on the Inventory virtual directory.

Answer: D

NEW QUESTION 298

Note This question is part of a series of questions that use the same scenario. For your convenience, the scenario is repeated in each question. Each question presents a different goal and answer choices, but the text of the scenario is exactly the same in each question in this series.

Start of Repeated Scenario:

A company named Contoso, Ltd. has several servers that run Windows Server 2016 Contoso has a Hyper V environment that uses failover clustering and Windows Server Update Services (WSUS). The environment contains several Windows containers and several virtual machines.

The WSUS deployment contains one upstream server that is located on the company's perimeter network and several downstream servers located on the internal network, A firewall separates the upstream server from the downstream servers.

You plan to deploy a human resources application to a new server named HRServer5. HRServer5 contains a FAT32-formatted data volume.

The CIO of Contoso identifies the following requirements for the company's IT department:

- Deploy failover cluster to two new virtual machines.
- Store all application databases by using Encrypted File System (EFS).
- Ensure that each Windows container has a dedicated IP address assigned by a DHCP server
- Produce a report that lists the processor time used by all of the processes on a server named Server 1 for five hour.

Encrypt all communication between the internal network and the perimeter network, including all WSUS communications.

- Automatically load balance the virtual machines hosted in the Hyper-V cluster when processor utilization exceeds 70 percent.

End of Repeated Scenario.

You need to modify the Hyper V cluster to meet the load balancing requirement for the virtual machine. Which command should you run?

- A. network address translation (NAT)
- B. I2bridge
- C. I2tunnel
- D. transparent

Answer: A

NEW QUESTION 303

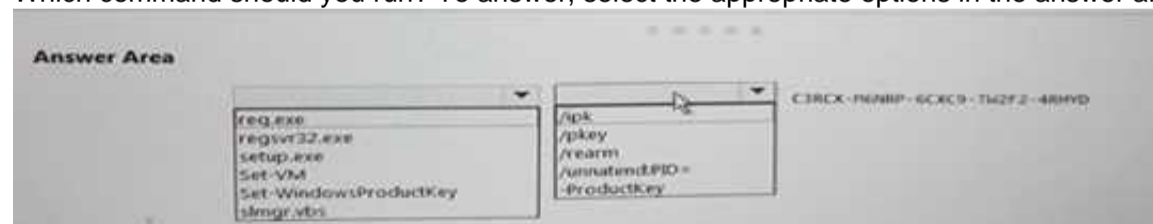
HOTSPOT

You have a Hyper-V host named Server1 that runs Windows Server 2016 Datacenter. Server1 is activated.

On Server 1. you deploy a virtual machine named VM1 that has a Server Core installahon of Windows Server 2016 Standard.

You need to activate VMI try using Automatic Virtual Machine- Activation (AVMA).

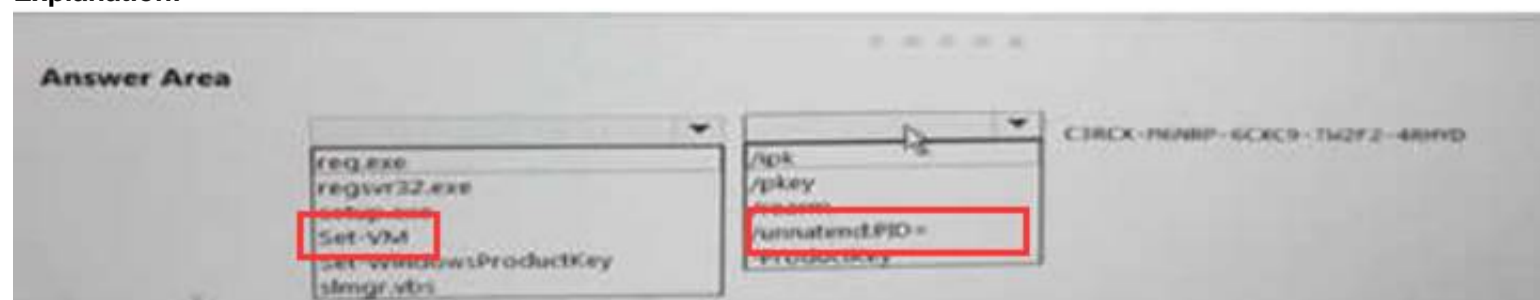
Which command should you run? To answer, select the appropriate options in the answer area. NOTE: Each correct selection is worth one point.



- A. Mastered
- B. Not Mastered

Answer: A

Explanation:



NEW QUESTION 307

You have a Windows Server 2016 fail over cluster named that contains four nodes named Server 1, Server2. Server3. and Server4. Cluster1 hosts 40 virtual machines that are distributed evenly across the nodes.

Server 1 and Server2 are located in a data center in Madrid. Server1 and Server4 are located in a data center in Barcelona.

You need to ensure that when you pause a node, the clustered virtual machines will always attempt to move automatically to another node in the same data center before attempting to move to a node in the other data center.

Which two actions should you perform?

Each correct answer presents part of the solution.

- A. Run the New-ClusterFaultDomain cmdlet.
- B. Configure a file share witness for each data center.
- C. Create an Active Directory site for each data center.
- D. Run the Set-Cluster FaultDomain cmdlet.
- E. Run the Add-ClusterGroup cmdlet.
- F. Change the quorum configuration of the cluster to Node Majority.

Answer: CE

NEW QUESTION 310

Your network contains an Active Directory domain.

The domain contains two Hyper-V hosts.

You plan to perform live migrations between the hosts.

You need to ensure that the live migration traffic is authenticated by using Kerberos. What should you do first?

- A. From Server Manager, install the Host Guardian Service server role on a domain controller.
- B. From Active Directory Users and Computers, add the computer accounts for both servers to the Cryptographic Operators group.
- C. From Active Directory Users and Computers, modify the Delegation properties of the computer accounts for both servers.
- D. From Server Manager, install the Host Guardian Service server role on both servers.

Answer: C

Explanation:

If you have decided to use Kerberos to authenticate live migration traffic, configure constrained delegation before you proceed to the rest of the steps.

NEW QUESTION 315

You have a Windows Server 2016 failover cluster named Ousted that contains three nodes named

Server 1, Server 2, and Server 3. Each node hosts several virtual machines. The virtual machines are configured to fail over to another node in Ousted if the hosting node fails.

You need to ensure that if the Cluster service fails on one of the nodes, the virtual machine of that node will fail over immediately.

Which setting should you configure?

- A. failureConditionLevel
- B. QuarantineDuration
- C. Resiliency Period
- D. ResiliencyLevel

Answer: B

NEW QUESTION 319

DRAG DROP

You have a server named Server1 that runs Windows Server 2016.

You open a command prompt on Server1 and run the following commands.

C:\>diskpart

Microsoft DiskPart version 10.0.14393.0

Copyright (c) 1999-2013 Microsoft Corporation.
 On computer: SERVER1

DISKPART> list disk

Disk ###	Status	Size	Free	Dyn	Gpt
Disk 0	Online	127 GB	0 B		
Disk 1	Online	1800 GB	0 B		

DISKPART> select disk 1

Disk 1 is now the selected disk.

DISKPART> list partition

Partition ###	Type	Size	Offset
Partition 1	Primary	1799 GB	1024 KB

You back up the data on Disk 1.

You plan to convert Disk 1 to a GPT disk, and then to restore the data to Disk 1.

Which four DiskPart commands should you run in sequence before you restore the data? To answer, move the appropriate commands from the list of commands to the answer area and arrange them in the correct order.

Commands

Answer Area

convert dynamic

select disk 1

format fs=ntfs

create partition logical

create partition primary

convert gpt

clean



- A. Mastered
- B. Not Mastered

Answer: A

Explanation:

References: <https://www.remotesoftware.com/info/convert-gpt-mbr-without-data-loss> <https://docs.microsoft.com/en-us/windows-server/administration/windows-commands/create-partition-primary>

NEW QUESTION 322

Your network contains an Active Directory domain named adatum.com. The domain contains a Network Load Balancing (NLB) cluster as shown in the exhibit. (Click the Exhibit button.)
 Which hosts will respond to requests sent to nlb.adatum.com?

Log Entry	Date	Time	Cluster	Host	Description
0040	7/8/2017	2:07:53 AM	192.168.10...	SERVER2	End configuration change
00401	7/8/2017	2:07:53 AM	192.168.10...	SERVER1	Update 6 succeeded [double click
0042	7/8/2017	2:07:53 AM	192.168.10...	SERVER1	End configuration change

- A. Server1 only
- B. Server2 only
- C. Server1 and Server2 only
- D. Server1, Server2

Answer: B

NEW QUESTION 324

You have a Hyper-V host named Server1 that runs Windows Server 2016. Server1 hosts a virtual machine named VM1. VM1 has the following settings: Nested virtualization is enabled. Dynamic Memory is disabled. VM1 is currently running. You need to adjust the amount of memory assigned to VM1 as quickly as possible. What should you do first?

- A. Change the memory buffer setting of VM1.
- B. Pause VM1.
- C. Shut down VM1.
- D. Enable Dynamic Memory for VM1.

Answer: D

NEW QUESTION 329

DRAG DROP
 Your network contains an Active Directory domain named contoso.com. The domain has two clusters named FC1 and FC2. The domain contains servers that run Windows Server 2016. The servers are configured as shown in the following table.

Server name	Processor	Memory	Cluster
Server1	Intel Xeon E3	128 GB	FC1
Server2	Intel Xeon E3	128 GB	FC1
Server3	Intel Xeon E3	256 GB	FC2
Server4	Intel Xeon E3	256 GB	FC2

Server1 hosts a highly available virtual machine named VM1. You need to move VM1 from Server1 to Server3 by using live migration. Which three actions should you perform in sequence? To answer, move the appropriate actions from the list of actions to the answer area and arrange them in the correct order.

Actions

Answer Area

Add the Virtual Machine role

Add the Hyper-V Replica Broker role to FC1 and FC2

Remove VM1 from FC1

Perform live migration from Failover Cluster Manager

Perform live migration from Hyper-V Manager



- A. Mastered
- B. Not Mastered

Answer: A

Explanation:

References: <http://www.checkyourlogs.net/?p=16401>

NEW QUESTION 332

You have a Hyper-V host named Server1 that runs Windows Server 2016. Server1 has an external virtual switch named Switch1. Server1 hosts a virtual machine named VM1 that runs Windows Server 2016. VM1 has one network adapter. The network adapter connects to Switch1.

You need to limit the maximum network bandwidth available to VM1 to 100 Mbps. The solution must limit the bandwidth for VM1 only.

Which cmdlet should you run?

- A. Set-NetAdapter
- B. Set-VMNetworkAdapter
- C. Set-VM
- D. Set-NetAdapterVmq
- E. Set-NetworkSwitchPortProperty

Answer: B

Explanation:

The Set-VMNetworkAdapterVlan cmdlet configures virtual LAN settings for the traffic through a virtual network adapter.

NEW QUESTION 335

NOTE: This Question is a part of a series of questions that use the same or similar answer choices. An answer choice may be correct for more than one question in the series. Each question is independent of the other questions in this series. Information and details provided in a question apply only to that question.

You have a Hyper-V host named server 1 that runs Windows Server 2016 and a two-node scale-out file server cluster named Cluster1.

You need to migrate the storage on VM1 to Cluster1. Which tool should you use?

- A. the clussvc.exe command
- B. the Cluster.exe command
- C. the Computer Management snap-in
- D. the configure hyperv.exe command
- E. the Disk Management snap-in
- F. the Failover Cluster Manager snap-in
- G. the Hyper-V Manager snap-in
- H. the Server Manager app

Answer: G

NEW QUESTION 336

You have a server named Server1 that runs Windows Server 2016.

Server1 has four SCSI disks and a storage pool named Pool1 that contains three disks. You create a virtual disk named Disk 1 that uses a mirrored layout.

You create a partition named Partition1 that uses all of the available space on Disk 1. You need to extend Partition1.

What should you do first?

- A. From Windows PowerShell, run the Resize-Partition cmdlet.
- B. From Disk Management, modify the properties of Partition1.
- C. From the Storage Pools page in Server Manager, extend a virtual disk.
- D. From Disk Management, extend a volume.

Answer: C

Explanation:

References: <https://charbelnemnom.com/2015/03/step-by-step-how-to-extend-and-resize-a-two-way-mirrored-storage-tiered-space-storage-spaces-ws2012r2/>

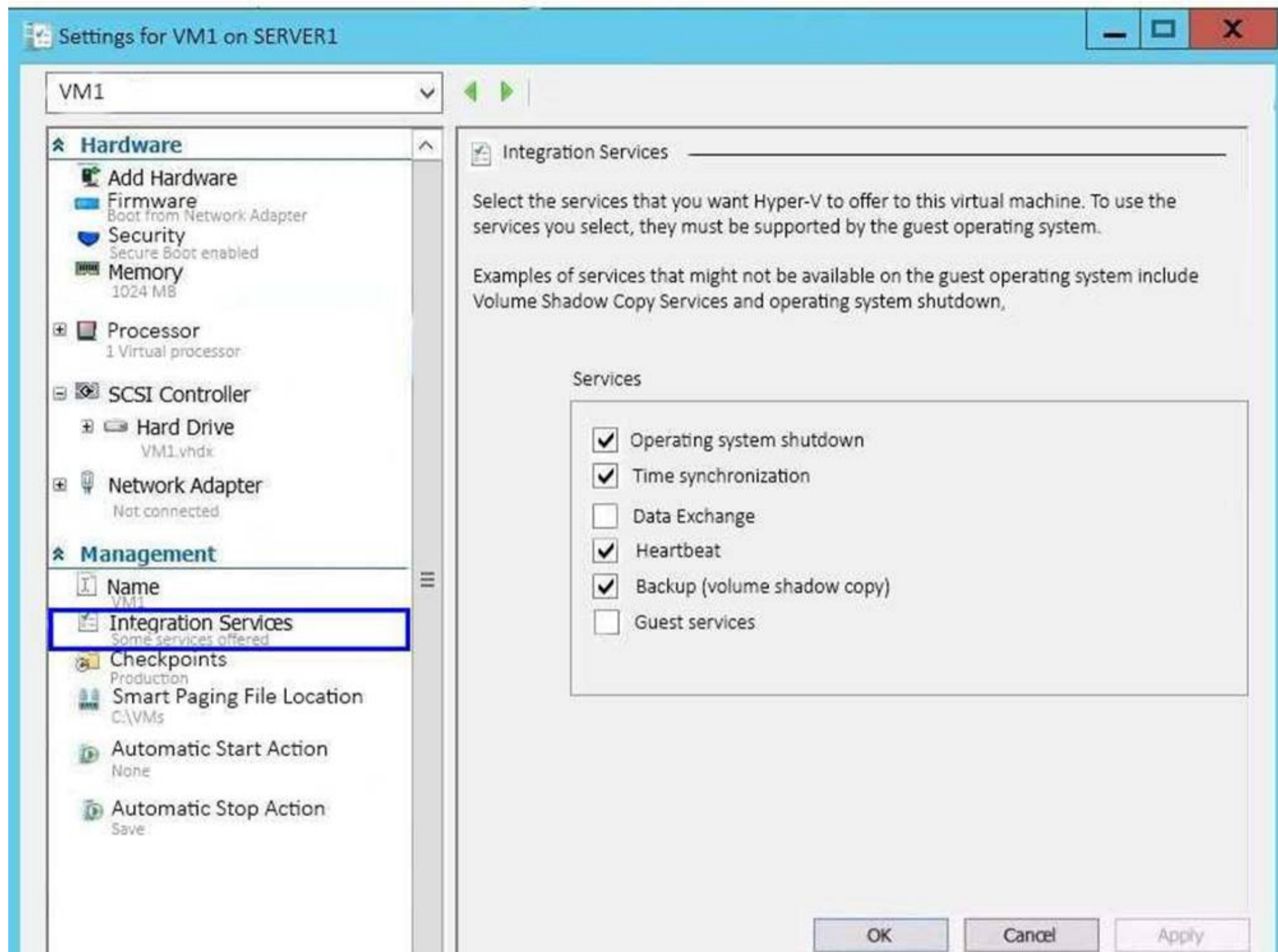
NEW QUESTION 337

Note: This question is part of a series of questions that present the same scenario. Each question in the series contains a unique solution that might meet the stated goals. Some question sets might have more than one correct solution, while others might not have a correct solution.

After you answer a question in this section, you will NOT be able to return to it. As a result, these questions will not appear in the review screen.

You have a Hyper-V host named Server1 that hosts a virtual machine named VM1. Server1 and VM1 run Windows Server 2016.

The settings for VM1 are configured as shown in the exhibit. (Click the Exhibit button.)



You need to ensure that you can use the Copy-VMFile cmdlet on Server1 to copy files from VM1. Solution: You enable the Guest services integration service for VM1.

Does this meet the goal?

- A. Yes
- B. No

Answer: A

Explanation:

References: [https://technet.microsoft.com/en-us/library/dn798297\(v=ws.11\).aspx](https://technet.microsoft.com/en-us/library/dn798297(v=ws.11).aspx)

NEW QUESTION 338

Your network contains an Active Directory domain named contoso.com. The domain contains a Hyper-V host named Server1 that runs Windows Server 2016. Server1 hosts four virtual machines that are members of the domain. The virtual machines are configured as shown in the following table.

Virtual machine name	Operating system	Virtual machine generation	Type of VHD file
VM1	Windows 10	2	VHD
VM2	Windows Server 2016	2	VHD
VM3	Windows Server 2012 R2	2	VHDx
VM4	Windows Server 2016	1	VHDx

Which virtual machines can you manage by using PowerShell Direct?

- A. VM1, VM2, and VM3
- B. VM1, VM2, and VM4
- C. only VM2
- D. only VM4

Answer: B

Explanation:

To use PowerShell Direct, the host operating system must run at least Windows 10 or Windows Server 2016.

References: <https://docs.microsoft.com/en-us/windows-server/virtualization/hyper-v/manage/manage-windows-virtual-machines-with-powershell-direct#whats-required-to-use-powershell-direct>

NEW QUESTION 343

Note: This question is part of a series of questions that present the same scenario. Each question in the series contains a unique solution that might meet the stated goals. Some question sets might have more than one correct solution, while others might not have a correct solution.

After you answer a question in this section, you will NOT be able to return to it. As a result, these questions will not appear in the review screen.

You network contains an Active Directory forest named contoso.com. The forest contains a child domain named eu.contoso.com.

You plan to implement live migration between two Hyper-V hosts that run Windows Server 2016. The hosts are configured as shown in the following table.

Host name	Configuration
Host1	<ul style="list-style-type: none"> Is a member of the contoso.com domain Uses an Intel Xeon processor released in 2012 Has an external virtual switch named Switch1 Hosts a virtual machine named VM1 that connects to Switch1
Host2	<ul style="list-style-type: none"> Is a member of the eu.contoso.com domain Uses an Intel Xeon processor released in 2016 Has an external virtual switch named Switch1

You need to ensure that you can perform a live migration of VM1 from Host1 to Host2.

Solution: You shut down VM1, configure the processor compatibility settings, and then start VM1. Does meet the goal?

- A. Yes
- B. No

Answer: A

NEW QUESTION 344

Note: This question is part of a series of questions that present the same scenario. Each question in the series contains a unique solution that might meet the stated goals. Some question sets might have more than one correct solution, while others might not have a correct solution.

After you answer a question in this section, you will NOT be able to return to it. As a result, these questions will not appear in the review screen.

You network contains an Active Directory forest named contoso.com. The forest contains a child domain named eu.contoso.com.

You plan to implement live migration between two Hyper-V hosts that run Windows Server 2016. The hosts are configured as shown in the following table.

Host name	Configuration
Host1	<ul style="list-style-type: none">• Is a member of the contoso.com domain• Uses an Intel Xeon processor released in 2012• Has an external virtual switch named Switch1• Hosts a virtual machine named VM1 that connects to Switch1
Host2	<ul style="list-style-type: none">• Is a member of the eu.contoso.com domain• Uses an Intel Xeon processor released in 2016• Has an external virtual switch named Switch1

You need to ensure that you can perform a live migration of VM1 from Host1 to Host2.

Solution: On Host1 and Host2, you create a private switch named Priv1, and then you connect VM1 to Priv1.

Does meet the goal?

- A. Yes
B. No

Answer: B

NEW QUESTION 346

Note: This question is part of a series of questions that present the same scenario. Each question in the series contains a unique solution that might meet the stated goals. Some question sets might have more than one correct solution, while others might not have a correct solution.

After you answer a question in this section, you will NOT be able to return to it. As a result, these questions will not appear in the review screen.

You have an Exchange Server 2016 organization.

Some users access the mailbox on their mobile device by using Exchange ActiveSync.

You need to prevent the users from synchronizing more than one month of email or calendar data to their device.

Solution: You deploy an Allow/Block/Quarantine policy. Does this meet the goal?

- A. Yes
B. No

Answer: B

NEW QUESTION 349

You have two servers named Server1 and Server2 that run Windows Server 2016.

You plan to implement Storage Replica to replicate the contents of volumes on Server1 to Server2. You need to ensure that the replication traffic between the servers is limited to a maximum of 100 Mbps.

Which cmdlet should you run?

- A. New-NetQosPolicy
B. Set-NetworkController
C. New-NetTransportFilter
D. New-StorageQosPolicy
E. Set-NetTCPSetting
F. Set-NetUDPSetting

Answer: A

Explanation:

References: <https://docs.microsoft.com/en-us/powershell/module/netqos/new-netqospolicy?view=win10-ps>

NEW QUESTION 351

Note: This question is part of a series of questions that use the same scenario. For your convenience, the scenario is repeated in each question. Each question presents a different goal and answer choices, but the text of the scenario is exactly the same in each question in this series.

A company named Contoso, Ltd. has several servers that run Windows Server 2016. Contoso has a Hyper-V environment that uses failover clustering and Windows Server Update Services (WSUS). The environment contains several Windows containers and several virtual machines.

The WSUS deployment contains one upstream server that is located on the company's perimeter network and several downstream servers located on the internal network. A firewall separates the upstream server from the downstream servers.

You plan to deploy a human resources application to a new server named HRServer5. HRServer5 contains a FAT32-formatted data volume.

The CIO of Contoso identifies the following requirements for the company's IT department:

Which two actions should you perform to meet the encryption requirement for WSUS? Each correct answer presents part of the solution.

- A. Require SSL on the Inventory virtual directory.
B. Require SSL on the ClientWebService virtual directory.
C. Create a firewall rule to allow TCP port 443.
D. Create a firewall rule to allow TCP port 8531.

Answer: BC

Explanation:

References:

<https://technet.microsoft.com/en-us/library/bb633246.aspx> https://en.wikipedia.org/wiki/List_of_TCP_and_UDP_port_numbers

NEW QUESTION 354

You have Nano Server image named Disk1.vhdx. You mount Disk1.vhdx.

You need to add a folder that contains several files to the image. Which tool or cmdlet you should use?

- A. File Explore.
- B. Add-Windows Image
- C. Nano Server Image Builder
- D. Dism

Answer: D

NEW QUESTION 359

Note: This question is part of a series of questions that present the same scenario. Each question in the series contains a unique solution that might meet the stated goals. Some question sets might have more than one correct solution, while others might not have a correct solution.

After you answer a question in this section, you will NOT be able to return to it. As a result, these questions will not appear in the review screen.

You network contains an Active Directory forest named contoso.com. The forest contains a child domain named eu.contoso.com.

You plan to implement live migration between two Hyper-V hosts that run Windows Server 2016. The hosts are configured as shown in the following table.

Host name	Configuration
Host1	<ul style="list-style-type: none"> Is a member of the contoso.com domain Uses an Intel Xeon processor released in 2012 Has an external virtual switch named Switch1 Hosts a virtual machine named VM1 that connects to Switch1
Host2	<ul style="list-style-type: none"> Is a member of the eu.contoso.com domain Uses an Intel Xeon processor released in 2016 Has an external virtual switch named Switch1

You need to ensure that you can perform a live migration of VM1 from Host1 to Host2.

Solution: You replace the processor in Host1 with a processor that is identical to the processor in Host2.

Does meet the goal?

- A. Yes
- B. No

Answer: B

NEW QUESTION 363

You have a server named Server1 that runs Windows Server 2016. Server1 has two network adapters that support single root I/O virtualization (SR-IOV). The network adapters are from two different vendors.

You plan to install the Hyper-V server role on Server1, and then to create a virtual machine named VM1 that runs Windows Server 2016. VM1 will use SR-IOV.

You need to ensure that VM1 can use both network adapters for load balancing and failover. What should you do?

- A. On Server1, create two virtual switches without embedded teamin
- B. On VM1, create one NIC team.
- C. On Server1, create one virtual switch without embedded teamin
- D. On VM1, create one NIC team.
- E. On Server1, create one NIC tea
- F. On VM1, create one NIC team.
- G. On Server1, create one virtual switch that has embedded teamin
- H. On VM1, create two NIC teams.

Answer: A

NEW QUESTION 365

You have a Network Load Balancing (NLB) cluster that contains two nodes named Server1 and Server2. The nodes run Windows Server 2016.

The NLB cluster has the following configuration.

```
ClusterName      :
IPAddress        : 172.16.4.1
Name             :
ClusterIPAddress : 172.16.4.1
ClusterNetworkMask : 255.255.0.0
ClusterMacAddress : 02-bf-ac-10-04-01
OperationMode    : UNICAST
BdaReverseHash   : False
BdaTeamActive    : False
BdaTeamId        :
BdaTeamMaster    : False

IPAddress State Start End Protocol Mode Affinity Timeout
-----
All Enabled 0 65535 Both Multiple Single 0
```

You deploy the Web Server (IIS) server role identically to both servers.
You need to configure NLB to load balance requests between the web servers. HTTP requests must be stateless. HTTPS requests must be stateful.
What should you do? Each correct answer presents part of the solution.

- A. Modify the Cluster operation mode.
- B. Suspend the cluster.
- C. Drainstop the cluster.
- D. Add a new port rule.
- E. Edit the existing port rule.

Answer: CD

Explanation:

References:

<https://www.ntweekly.com/2017/09/04/failover-nlb-cluster-host-member/> <https://docs.microsoft.com/en-us/windows-server/networking/technologies/network-load-balancing>

NEW QUESTION 366

You have a Hyper-V host named Server1 that runs Windows Server 2016. Server1 hosts a virtual machine named VM1 that runs Windows Server 2012. VM1 has the following configuration.

```
C:\>Get-VM VM1 | fl Version, HardDrives, DynamicMemoryEnabled, Generation, MemoryStartup

Version           : 5.0
HardDrives         : {Hard drive on IDE controller number 0 at location 0}
DynamicMemoryEnabled : False
Generation         : 1
MemoryStartup      : 536870912

C:\>Get-VMIntegrationService VM1

VMName Name Enabled PrimaryStatusDescription SecondaryStatusDescription
-----
VM1 Guest Service Interface False OK
VM1 Heartbeat False OK
VM1 Key-Value Pair Exchange False OK
VM1 Shutdown False OK
VM1 Time Synchronization False OK
VM1 VSS False OK
```

You discover that when you back up Server1, VM1 temporarily pauses.

You need to ensure that you can back up Server1 without causing downtime on VM1. What should you do?

- A. Increase the memory on VM1
- B. Connect the hard disk drive of VM1 to an SCSI controller
- C. Update the virtual machine version of VM1
- D. Upgrade VM1 to Windows Server 2016
- E. Enable the VSS integration service on VM1

Answer: E

Explanation:

References:

<https://www.starwindsoftware.com/blog/hyper-v-backup-challenges-windows-server-2016-needs-to-address>

NEW QUESTION 370

.....

THANKS FOR TRYING THE DEMO OF OUR PRODUCT

Visit Our Site to Purchase the Full Set of Actual 70-740 Exam Questions With Answers.

We Also Provide Practice Exam Software That Simulates Real Exam Environment And Has Many Self-Assessment Features. Order the 70-740 Product From:

<https://www.2passeasy.com/dumps/70-740/>

Money Back Guarantee

70-740 Practice Exam Features:

- * 70-740 Questions and Answers Updated Frequently
- * 70-740 Practice Questions Verified by Expert Senior Certified Staff
- * 70-740 Most Realistic Questions that Guarantee you a Pass on Your FirstTry
- * 70-740 Practice Test Questions in Multiple Choice Formats and Updatesfor 1 Year