



Microsoft

Exam Questions 98-361

Microsoft MTA Software Development Fundamentals

NEW QUESTION 1

- (Topic 1)

This question requires that you evaluate the underlined text to determine if it is correct.

The duplication of code so that modifications can happen in parallel is known as separating.

Select the correct answer if the underlined text does not make the statement correct. Select "No change is needed" if the underlined text makes the statement correct.

- A. No change is needed
- B. branching
- C. merging
- D. splitting

Answer: B

Explanation:

When you develop applications in a team-based environment, you might need to access multiple versions of your application at the same time. If you copy one or more areas of your code into a separate branch, you can update one copy while you preserve the original version, or you can update both branches to meet different needs. Depending on your development goals, you can later merge the changes from multiple branches to create a single version that reflects all changes.

NEW QUESTION 2

- (Topic 1)

A class named Manager is derived from a parent class named Employee. The Manager class includes characteristics that are unique to managers.

Which term is used to describe this object-oriented concept?

- A. Encapsulation
- B. Data modeling
- C. Inheritance
- D. Data hiding

Answer: C

Explanation:

Classes (but not structs) support the concept of inheritance. A class that derives from another class (the base class) automatically contains all the public, protected, and internal members of the base class except its constructors and destructors.

Incorrect:

not A: Encapsulation is sometimes referred to as the first pillar or principle of object-oriented programming. According to the principle of encapsulation, a class or struct can specify how accessible each of its members is to code outside of the class or struct. Methods and variables that are not intended to be used from outside of the class or assembly can be hidden to limit the potential for coding errors or malicious exploits.

NEW QUESTION 3

- (Topic 1)

All objects in .NET inherit from which item?

- A. the System.Object class
- B. a value type
- C. a reference type
- D. the System.Type class

Answer: A

Explanation:

The System.Object class supports all classes in the .NET Framework class hierarchy and provides low-level services to derived classes. This is the ultimate base class of all classes in the .NET Framework; it is the root of the type hierarchy.

NEW QUESTION 4

- (Topic 1)

You are creating an application that presents users with a graphical interface in which they can enter data. The application must run on computers that do not have network connectivity.

Which type of application should you choose?

- A. Console-based
- B. Windows Forms
- C. Windows Service
- D. ClickOnce

Answer: B

Explanation:

Use Windows Forms when a GUI is needed.

NEW QUESTION 5

- (Topic 1)

You are writing a Web application that processes room reservation requests. You need to verify that the room that a guest has selected is not already reserved by another guest.

Which type of programming should you use to determine whether the room is still available when the request is made?

- A. client-side
- B. server-side
- C. multithreaded
- D. batch processing

Answer: B

Explanation:

For room availability we need to check a database located on a server.

NEW QUESTION 6

HOTSPOT - (Topic 1)

You are reviewing the following code that saves uploaded images.

```
struct ImageInfo
{
    public byte[] Data;
    public int Length;
    public Guid Id;
}

void Post()
{
    var uploaded = PostedImage();
    var newImage = new ImageInfo();
    newImage.Data = uploaded;
    newImage.Length = uploaded.Length;
    newImage.Id = Guid.NewGuid();
}
```

For each of the following statements, select Yes if the statement is true. Otherwise, select No. Each correct selection is worth one point.

Answer Area

Description of Behavior	Yes	No
The bytes that comprise the image are stored on the stack	<input type="radio"/>	<input type="radio"/>
The length of the image data is stored on the heap.	<input type="radio"/>	<input type="radio"/>
The Id of the image is stored on the stack.	<input type="radio"/>	<input type="radio"/>

- A. Mastered
- B. Not Mastered

Answer: A

Explanation:

Answer Area

Description of Behavior	Yes	No
The bytes that comprise the image are stored on the stack	<input type="radio"/>	<input checked="" type="radio"/>
The length of the image data is stored on the heap.	<input type="radio"/>	<input checked="" type="radio"/>
The Id of the image is stored on the stack.	<input checked="" type="radio"/>	<input type="radio"/>

NEW QUESTION 7

- (Topic 1)

A data warehouse database is designed to:

- A. Enable business decisions by collecting, consolidating, and organizing data.
- B. Support a large number of concurrent users.
- C. Support real-time business operations.
- D. Require validation of incoming data during real-time business transactions.

Answer: A

NEW QUESTION 8

- (Topic 1)

You are creating a variable for an application.

You need to store data that has the following characteristics in this variable:

- ? Consists of numbers and characters
- ? Includes numbers that have decimal points

Which data type should you use?

- A. String
- B. Float
- C. Char
- D. Decimal

Answer: A

Explanation:

Need a string to store characters.

NEW QUESTION 9

- (Topic 1)

You have a class with a property.

You need to ensure that consumers of the class can write to the value of the property. Which keyword should you use?

- A. value
- B. add
- C. get
- D. set

Answer: D

Explanation:

Set:

The set { } implementation receives the implicit argument "value." This is the value to which the property is assigned.

* Property. On a class, a property gets and sets values. A simplified syntax form, properties are implemented in the IL as methods (get, set).

NEW QUESTION 10

- (Topic 1)

This question requires that you evaluate the underlined text to determine if it is correct. Converting an object to a more general type is called upcasting.

Select the correct answer if the underlined text does not make the statement correct. Select "No change is needed" if the underlined text makes the statement correct.

- A. No change is needed
- B. downcasting
- C. interfacing

D. flexing

Answer: :A

Explanation:

Casting up a hierarchy means casting from a derived object reference to a base object reference.

NEW QUESTION 10

- (Topic 1)

You are creating the necessary variables for an application. The data you will store in these variables has the following characteristics:

- ? Consists of numbers
- ? Includes numbers that have decimal points
- ? Requires more than seven digits of precision

You need to use a data type that will minimize the amount of memory that is used. Which data type should you use?

- A. decimal
- B. double
- C. byte
- D. float

Answer: B

Explanation:

The double keyword signifies a simple type that stores 64-bit floating-point values.

Precision: 15-16 digits

Incorrect:

Not D: The float keyword signifies a simple type that stores 32-bit floating-point values. Precision: 7 digits

NEW QUESTION 15

- (Topic 1)

You are creating a database for a student directory. The Students table contains the following fields:

```
firstName
lastName
emailAddress
telephoneNumber
```

Which statement will retrieve only the first name, last name, and telephone number for every student listed in the directory?

- A. WHERE Students SELECT *
- B. SELECT firstName, lastName, telephoneNumber FROM Students
- C. SELECT firstName, lastName, telephoneNumber IN Students
- D. SELECT * FROM Students
- E. WHERE Students SELECT firstName, lastName, telephoneNumber

Answer: B

Explanation:

Use SELECT??FROM and list the fields you want to retrieve.

NEW QUESTION 19

HOTSPOT - (Topic 1)

For each of the following statements, select Yes if the statement is true. Otherwise, select No. Each correct selection is worth one point.

Answer Area

Test Behavior	Yes	No
The primary goal of unit testing is to take the smallest piece of testable software in the application, isolate it from the remainder of the code, and determine whether it behaves exactly as expected.	<input type="radio"/>	<input type="radio"/>
In unit testing, each unit is tested separately before integrating the units into modules to test the interfaces between modules.	<input type="radio"/>	<input type="radio"/>
The driver that you use in unit testing simulates a calling unit and the stub simulates a called unit.	<input type="radio"/>	<input type="radio"/>

- A. Mastered
- B. Not Mastered

Answer: A

Explanation:
Answer Area

Test Behavior	Yes	No
The primary goal of unit testing is to take the smallest piece of testable software in the application, isolate it from the remainder of the code, and determine whether it behaves exactly as expected.	<input checked="" type="radio"/>	<input type="radio"/>
In unit testing, each unit is tested separately before integrating the units into modules to test the interfaces between modules.	<input checked="" type="radio"/>	<input type="radio"/>
The driver that you use in unit testing simulates a calling unit and the stub simulates a called unit.	<input checked="" type="radio"/>	<input type="radio"/>

NEW QUESTION 23

- (Topic 1)
This question requires that you evaluate the underlined text to determine if it is correct.
The bubble sort algorithm steps through the list to be sorted, comparing adjacent items and swapping them if they are in the wrong order
Select the correct answer if the underlined text does not make the statement correct. Select "No change is needed" if the underlined text makes the statement correct.

A. No change is needed
B. merge
C. library
D. insertion

Answer: :A

NEW QUESTION 26

- (Topic 1)
How should you configure an application to consume a Web service?

A. Add the Web service to the development computer.
B. Add a reference to the Web service in the application.
C. Add a reference to the application in the Web service.
D. Add the Web service code to the application.

Answer: B

Explanation:
Start by adding a Service Reference to the project. Right-click the ConsoleApplication1 project and choose ??Add Service Reference??:

NEW QUESTION 30

- (Topic 1)
You execute the following code.


```
bool beakerFull = true;
bool flameOn = false;
int iResult;

switch (beakerFull)
{
    case true:
        switch (flameOn)
        {
            case true:
                iResult = 1;
                break;
            case false:
                iResult = 2;
                break;
        }
        break;
    case false:
        switch (flameOn)
        {
            case false:
                iResult = 3;
                break;
            case true:
                iResult = 4;
                break;
        }
        break;
}
```

What will the variable result be?

- A. 1
- B. 2
- C. 3
- D. 4

Answer: B

NEW QUESTION 32

- (Topic 1)

You are writing a Web application that processes room reservation requests. You need to verify that the room that a guest has selected is not already reserved by another guest.

Which type of programming should you use to determine whether the room is still available when the request is made?

- A. functional
- B. dynamic
- C. in-browser
- D. server-side

Answer: D

NEW QUESTION 33

DRAG DROP - (Topic 1)

You are extending an application that stores and displays the results of various types of foot races. The application contains the following definitions:

```
public interface IDisplayResult
{
    void Display();
}

public class Race
{
    public int Seconds;

    public virtual void Display()
    {
        Console.WriteLine(Seconds);
    }
}
```

The following code is used to display the result for a race:

```
var r1 = new FootRace();
var r2 = r1 as IDisplayResult;
r1.Seconds = 99;

r1.Display();
r2.Display();
r1.DisplayRaw();
```

The contents of the console must be as follows:

- ? 99 seconds
- ? 1.65 minutes
- ? 99

You need to implement the FootRace class.

Match the method declaration to the method body, (To answer, drag the appropriate declaration from the column on the left to its body on the right. Each declaration may be used once, more than once, or not at all. Each correct match is worth one point.)

Code Segments

public override void Display()

public void DisplayRaw()

void IDisplayResult.Display()

private void Display()

Answer Area

public class FootRace : Race, IDisplayResult

{

Code Segment

{

Console.WriteLine(Seconds + " seconds");

}

Code Segment

{

base.Display();

}

Code Segment

{

Console.WriteLine(Seconds / 60d + " minutes");

}

}

- A. Mastered
- B. Not Mastered

Answer: A

Explanation:

Code Segments

public override void Display()

public void DisplayRaw()

void IDisplayResult.Display()

private void Display()

Answer Area

public class FootRace : Race, IDisplayResult

{

public override void Display()

{

Console.WriteLine(Seconds + " seconds");

}

public void DisplayRaw()

{

base.Display();

}

void IDisplayResult.Display()

{

Console.WriteLine(Seconds / 60d + " minutes");

}

}

NEW QUESTION 35

- (Topic 1)

You are reviewing a design for a database. A portion of this design is shown in the exhibits. Note that you may choose either the Crow's Foot Notation or Chen Notation version of the design. (To view the Crow's Foot Notation, click the Exhibit A button. To view the Chen Notation, click the Exhibit B button.)

Exhibit A



Exhibit B



Which term is used to describe the Customer component?

- A. Field
- B. Attribute
- C. Property
- D. Entity

Answer: D

Explanation:

Customer is a table (entity).

NEW QUESTION 39

- (Topic 1)

What does the Console.Error property do within a console-based application?

- A. sets the standard error input stream
- B. gets the standard error output stream
- C. gets the standard error input stream
- D. sets the standard error output stream

Answer: B

Explanation:

The Console.Error property gets the standard error output stream.

NEW QUESTION 41

- (Topic 1)

You are reviewing a design for a database. A portion of this design is shown in the exhibit. Note that you may choose to view either the Crow's Foot Notation or Chen Notation version of the design. (To view the Crow's Foot Notation, click the Exhibit A button. To view the Chen Notation, click the Exhibit B button.)

Exhibit A



Exhibit B



Which term is used to describe the relationship between Customer and Order?

- A. many-to-many
- B. one-to-many
- C. one-dimensional
- D. one-to-one
- E. multi-dimensional

Answer: B

Explanation:

A customer can have many orders.

NEW QUESTION 46

- (Topic 1)

What are two methods that can be used to evaluate the condition of a loop at the start of each iteration? (Each correct answer presents a complete solution. Choose two.)

- A. If
- B. D
- C. . . While
- D. For
- E. While

Answer: CD

Explanation:

For and While constructs check at the start of each iteration.

NEW QUESTION 47

- (Topic 1)

Which function does Simple Object Access Protocol (SOAP) provide when using Web services?

- A. directory of registered Web services
- B. communications protocol
- C. security model
- D. model for describing Web services

Answer: B

Explanation:

SOAP, originally defined as Simple Object Access Protocol, is a protocol specification for exchanging structured information in the implementation of web services in computer networks. It relies on XML Information Set for its message format, and usually relies on other application layer protocols, most notably Hypertext Transfer Protocol (HTTP) or Simple Mail Transfer Protocol (SMTP), for message negotiation and transmission.

NEW QUESTION 51

HOTSPOT - (Topic 1)

You are reviewing the following class that is used to manage the results of a 5K race:

```
public class Player
{
    private string _name;
    public const string Key = "player";

    public bool MatchName(string searchTerm)
    {
        return _name.ToLower() == searchTerm;
    }

    public void SetResult(int rank, string name)
    {
        if (_name != null)
            return;

        Ranking = rank;
        _name = name;
    }

    public int Ranking { get; private set; }
}
```

For each of the following statements, select Yes if the statement is true. Otherwise, select No. Each correct selection is worth one point.

Answer Area

Description of Behavior	Yes	No
You can only set the player’s ranking once.	<input type="radio"/>	<input type="radio"/>
If you call the MatchName method, the code will throw an exception.	<input type="radio"/>	<input type="radio"/>
You can change Key from “player” to “racer”.	<input type="radio"/>	<input type="radio"/>

- A. Mastered
- B. Not Mastered

Answer: A

Explanation:

Answer Area

Description of Behavior	Yes	No
You can only set the player's ranking once.	<input checked="" type="radio"/>	<input type="radio"/>
If you call the MatchName method, the code will throw an exception.	<input checked="" type="radio"/>	<input type="radio"/>
You can change Key from "player" to "racer".	<input type="radio"/>	<input checked="" type="radio"/>

NEW QUESTION 55

- (Topic 1)

You need to create an application that processes data on a last-in, first-out (LIFO) basis. Which data structure should you use?

- A. Queue
- B. Tree
- C. Stack
- D. Array

Answer: C

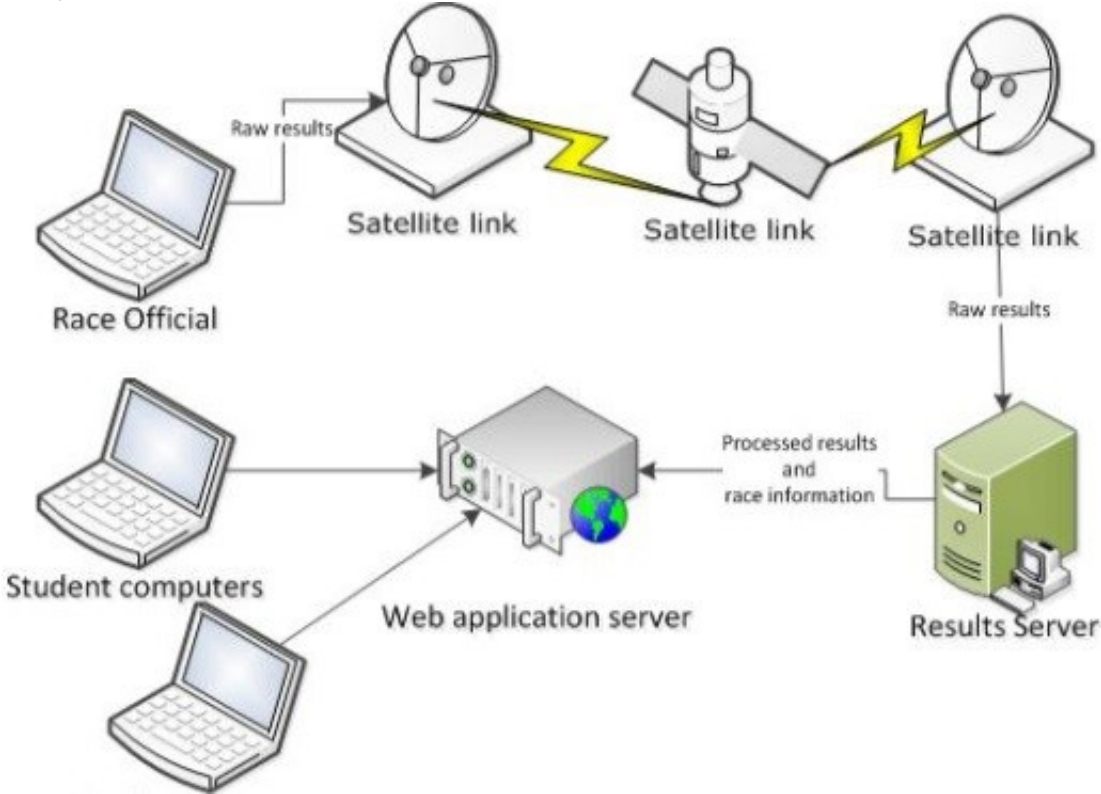
Explanation:

A stack implements LIFO.

NEW QUESTION 56

HOTSPOT - (Topic 1)

You are reviewing the architecture for a system that allows race officials to enter the results of 5K race results. The results are then made available to students using a web application. The architecture is shown below:



Use the drop-down menus to select the answer choice that answers each question. Each correct selection is worth one point.

Answer Area

To minimize the time between when a race official records the results and when the results are available on the web, which part of the system is critical?

To increase the number of students that can access race results, what element should be added to the system?

Answer Area

To minimize the time between when a race official records the results and when the results are available on the web, which part of the system is critical?

▼

satellite link
student computer
race official computer
web application server

To increase the number of students that can access race results, what element should be added to the system?

▼

satellite link
race officials
results servers
web application servers

- A. Mastered
- B. Not Mastered

Answer: A

Explanation:

Answer Area

To minimize the time between when a race official records the results and when the results are available on the web, which part of the system is critical?

▼

satellite link
student computer
race official computer
web application server

To increase the number of students that can access race results, what element should be added to the system?

▼

satellite link
race officials
results servers
web application servers

NEW QUESTION 57

HOTSPOT - (Topic 1)

For each of the following statements, select Yes if the statement is true. Otherwise, select No. Each correct selection is worth one point.

Answer Area

Description of Behavior	Yes	No
A queue’s items are stored in the order they were added.	<input type="radio"/>	<input type="radio"/>
A queue is a first in, first out (FIFO) data structure.	<input type="radio"/>	<input type="radio"/>
A queue has a limited number of items.	<input type="radio"/>	<input type="radio"/>

- A. Mastered
- B. Not Mastered

Answer: A

Explanation:

Answer Area

Description of Behavior	Yes	No
A queue’s items are stored in the order they were added.	<input checked="" type="radio"/>	<input type="radio"/>
A queue is a first in, first out (FIFO) data structure.	<input checked="" type="radio"/>	<input type="radio"/>
A queue has a limited number of items.	<input type="radio"/>	<input checked="" type="radio"/>

NEW QUESTION 60

- (Topic 1)

You need to ensure the data integrity of a database by resolving insertion, update, and deletion anomalies. Which term is used to describe this process in relational database design?

- A. Isolation
- B. Normalization
- C. Integration
- D. Resolution

Answer: B

Explanation:

Database normalization is the process of organizing the fields and tables of a relational database to minimize redundancy. Normalization usually involves dividing large tables into smaller (and less redundant) tables and defining relationships between them. The objective is to isolate data so that additions, deletions, and modifications of a field can be made in just one table and then propagated through the rest of the database using the defined relationships.

NEW QUESTION 64

- (Topic 1)

You have a stack that contains integer values. The values are pushed onto the stack in the following order: 2,4,6,8.

The following sequence of operations is executed:

Pop Push 3 Pop Push 4

Push 6

Push 7 Pop Pop Pop

What is the value of the top element after these operations are executed?

- A. 2
- B. 3
- C. 6
- D. 7

Answer: B

NEW QUESTION 65

- (Topic 1)

This question requires that you evaluate the underlined text to determine if it is correct.

The benefit of using a transaction when updating multiple tables is that the update cannot fail.

Select the correct answer if the underlined text does not make the statement correct. Select "No change is needed" if the underlined text makes the statement correct.

- A. No change is needed
- B. succeeds or fails as a unit
- C. finishes as quickly as possible
- D. can be completed concurrently with other transactions

Answer: B

Explanation:

The benefit of using a transaction when updating multiple tables is that the update succeeds or fails as a unit.

NEW QUESTION 66

- (Topic 1)

The Dog class and the Cat class inherit from the Animal class. The Animal class includes a breathe() method and a speak() method. If the speak() method is called from an object of type Dog, the result is a bark. If the speak() method is called from an object of type Cat, the result is a meow.

Which term is used to describe this object-oriented concept?

- A. multiple inheritance
- B. polymorphism
- C. data hiding
- D. encapsulation

Answer: A

Explanation:

Polymorphism is often referred to as the third pillar of object-oriented programming, after encapsulation and inheritance. Polymorphism is a Greek word that means "many-shaped" and it has two distinct aspects:

* At run time, objects of a derived class may be treated as objects of a base class in places

* such as method parameters and collections or arrays. When this occurs, the object's declared type is no longer identical to its run-time type.

* Base classes may define and implement virtual methods, and derived classes can override them, which means they provide their own definition and implementation. At run-time, when client code calls the method, the CLR looks up the run-time type of the object, and invokes that override of the virtual method.

Thus in your source code you can call a method on a base class, and cause a derived class's version of the method to be executed.

NEW QUESTION 71

- (Topic 1)

This question requires that you evaluate the underlined text to determine if it is correct.

The Response.Redirect method is used to transfer processing of the current page to a new page, and then return processing back to the calling page once processing of the new page has completed.

Select the correct answer if the underlined text does not make the statement correct. Select "No change is needed" if the underlined text makes the statement correct.

- A. No change is needed
- B. Server.Transfer method
- C. Server.Execute method
- D. meta http-equiv="refresh" tag

Answer: C

Explanation:

The Execute method calls an .asp file, and processes it as if it were part of the calling ASP script. The Execute method is similar to a procedure call in many programming languages.

Incorrect:

* Response.Redirect Method

The Redirect method causes the browser to redirect the client to a different URL.

* The Server.Transfer method sends all of the information that has been assembled for processing by one .asp file to a second .asp file.

NEW QUESTION 76

- (Topic 1)

This question requires that you evaluate the underlined text to determine if it is correct. To improve performance, a SQL SELECT statement should use indexes. Select the correct answer if the underlined text does not make the statement correct. Select "No change is needed" if the underlined text makes the statement correct.

- A. No change is needed
- B. joins
- C. grouping
- D. ordering

Answer: A

NEW QUESTION 77

- (Topic 1)

You have a table named ITEMS with the following fields:

? ID (integer, primary key, auto generated)

? Description (text)

? Completed (Boolean)

You need to insert the following data in the table:

"Cheese", False

Which statement should you use?

- A. INSERT INTO ITEMS (ID, Description, Completed) VALUES (1, 'Cheese', 0)
- B. INSERT INTO ITEMS (Description, Completed) VALUES ('Cheese', 1)
- C. INSERT INTO ITEMS (10, Description, Completed) VALUES (NEWID(), 'Cheese', 6)
- D. INSERT INTO ITEMS (Description, Completed) VALUES ('Cheese', 0)

Answer: D

Explanation:

The string values TRUE and FALSE can be converted to bit values: TRUE is converted to 1 and FALSE is converted to 0.

Incorrect:

Not A, not C: ID is autogenerated and should not be specified.

NEW QUESTION 80

- (Topic 1)

You have a server that limits the number of data connections.

What should you use to optimize connectivity when the number of users exceeds the number of available connections?

- A. Connection timeouts
- B. Named pipes
- C. Normalization
- D. Connection pooling

Answer: D

Explanation:

In software engineering, a connection pool is a cache of database connections maintained so that the connections can be reused when future requests to the database are required.

NEW QUESTION 84

- (Topic 1)

The purpose of a constructor in a class is to:

- A. Initialize an object of that class.
- B. Release the resources that the class holds.
- C. Create a value type.
- D. Inherit from the base class.

Answer: A

Explanation:

Each value type has an implicit default constructor that initializes the default value of that type.

NEW QUESTION 85

- (Topic 1)
You are developing a database that other programmers will query to display race results.
You need to provide the ability to query race results without allowing access to other information in the database.
What should you do?

- A. Disable implicit transactions.
- B. place the query into a stored procedure.
- C. Create an index on the result table.
- D. Add an AFTER UPDATE trigger on the result table to reject updates.

Answer: B

NEW QUESTION 86

HOTSPOT - (Topic 1)
You have a base class named Tree with a friend property named color and a protected property named NumberOfLeaves. In the same project, you also have a class named Person.
For each of the following statements, select Yes if the statement is true. Otherwise, select No. Each correct selection is worth one point.

Answer Area

Description of Behavior	Yes	No
Methods in the Person class can access the color property.	<input type="radio"/>	<input type="radio"/>
Methods in the Person class can access the NumberOfLeaves property.	<input type="radio"/>	<input type="radio"/>
Methods in the Tree class can access all private properties in Person.	<input type="radio"/>	<input type="radio"/>

- A. Mastered
- B. Not Mastered

Answer: A

Explanation:

Answer Area

Description of Behavior	Yes	No
Methods in the Person class can access the color property.	<input checked="" type="radio"/>	<input type="radio"/>
Methods in the Person class can access the NumberOfLeaves property.	<input type="radio"/>	<input checked="" type="radio"/>
Methods in the Tree class can access all private properties in Person.	<input type="radio"/>	<input checked="" type="radio"/>

NEW QUESTION 90

HOTSPOT - (Topic 1)
For each of the following statements, select Yes if the statement is true. Otherwise, select No. Each correct selection is worth one point.

Answer Area

Description of Behavior	Yes	No
An entity relationship diagram (ERD) is designed for an object-oriented database.	<input type="radio"/>	<input type="radio"/>
An entity relationship diagram (ERD) contains entities, relationships, and attributes.	<input type="radio"/>	<input type="radio"/>
Cardinality refers to how one table is linked to another table; as one-to-many.	<input type="radio"/>	<input type="radio"/>

- A. Mastered
 B. Not Mastered

Answer: A

Explanation:
Answer Area

Description of Behavior	Yes	No
An entity relationship diagram (ERD) is designed for an object-oriented database.	<input type="radio"/>	<input checked="" type="radio"/>
An entity relationship diagram (ERD) contains entities, relationships, and attributes.	<input checked="" type="radio"/>	<input type="radio"/>
Cardinality refers to how one table is linked to another table; as one-to-many.	<input checked="" type="radio"/>	<input type="radio"/>

NEW QUESTION 94

- (Topic 1)
 You need to evaluate the following expression: (A>B) AND (C<D)
 What is the value of this expression if A=3, B=4, C=4, and D=5?

- A. 4
 B. 5
 C. False
 D. Null
 E. True

Answer: D

Explanation:
 A>B is false.

NEW QUESTION 95

- (Topic 1)
 You have a class named Glass that inherits from a base class named Window. The Window class includes a protected method named break().
 How should you call the Glass class implementation of the break() method?

- A. Window.break();
 B. Glass.break();
 C. this.break();
 D. base.break();

Answer: A

NEW QUESTION 98

- (Topic 1)
 You are creating an ASP. NET Web application.
 Which line of code should you use to require a control to process on the computer that hosts the application?

- A. defaultRedirect="ServerPag
 B. htm"
 C. redirect="HostPag
 D. htm"
 E. AutoEventWireup="true"
 F. runat="server"

Answer: D

NEW QUESTION 101

- (Topic 1)

You are creating a Web application. The application will be consumed by client computers that run a variety of Web browsers. Which term is used to describe the process of making the application available for client computers to access?

- A. Casting
- B. Deploying
- C. Hosting
- D. Virtualization

Answer: C

Explanation:

You host web applications.

NEW QUESTION 102

- (Topic 1)

You are creating an application that accepts input and displays a response to the user. You cannot create a graphical interface for this application. Which type of application should you create?

- A. Windows Forms
- B. Windows Service
- C. Web-based
- D. Console-based

Answer: C

NEW QUESTION 106

- (Topic 1)

In the application life cycle, the revision of an application after it has been deployed is referred to as:

- A. Unit testing
- B. Integration
- C. Maintenance
- D. Monitoring

Answer: C

NEW QUESTION 110

- (Topic 1)

An application presents the user with a graphical interface. The interface includes buttons that the user clicks to perform tasks. Each time the user clicks a button, a method is called that corresponds to that button. Which term is used to describe this programming model?

- A. Functional
- B. Service oriented
- C. Structured
- D. Event driven

Answer: D

NEW QUESTION 113

- (Topic 1)

This question requires that you evaluate the underlined text to determine if it is correct.

When a base class declares a method as virtual, the method is hidden from implementation by a derived class.

Select the correct answer if the underlined text does not make the statement correct. Select "No change is needed" if the underlined text makes the statement correct.

- A. No change is needed
- B. can be overridden with its own implementation by a derived class
- C. must be overridden in any non-abstract class that directly inherits from that class
- D. cannot be overridden with its own implementation by a derived class

Answer: B

Explanation:

The implementation of a non-virtual method is invariant: The implementation is the same whether the method is invoked on an instance of the class in which it is declared or an instance of a derived class. In contrast, the implementation of a virtual method can be superseded by derived classes. The process of superseding the implementation of an inherited virtual method is known as overriding that method.

NEW QUESTION 118

- (Topic 1)

You are building a web application that enables international exchange students to schedule phone calls with their prospective schools.

The application allows students to indicate a preferred date and time for phone calls. Students may indicate no preferred time by leaving the date and time field empty. The application must support multiple time zones.

Which data type should you use to record the student's preferred date and time?

- A. uLong?

- B. DateTime
- C. SByte
- D. DateTimeOffset?

Answer: D

Explanation:

datetimeoffset: Defines a date that is combined with a time of a day that has time zone awareness and is based on a 24-hour clock.

Incorrect:

DateTime: Defines a date that is combined with a time of day with fractional seconds that is based on a 24-hour clock.

sByte: The sbyte keyword indicates an integral type that stores values in the range of -128 to 127.

NEW QUESTION 120

- (Topic 1)

This question requires that you evaluate the underlined text to determine if it is correct. Converting a value type to a reference type in an object is called boxing. Select the correct answer if the underlined text does not make the statement correct. Select "No change is needed" if the underlined text makes the statement correct.

- A. No change is needed
- B. unboxing
- C. interfacing
- D. mapping

Answer: A

Explanation:

Boxing is an implicit conversion of a Value Types (C# Reference) to the type object or to any interface type implemented by this value type.

NEW QUESTION 125

- (Topic 1)

Which three phrases are advantages of connection pooling? (Choose three.)

- A. reduces time to create a connection
- B. requires no configuration
- C. reduces load on the server
- D. improved scalability
- E. improved performance

Answer: ADE

Explanation:

E: In connection pooling, after a connection is created, it is placed in the pool and it is used over again so that a new connection does not have to be established.

D: Connection pooling often improves application performance, concurrency and scalability.

A: Connection pooling also cuts down on the amount of time a user must wait to establish a connection to the database.

NEW QUESTION 130

- (Topic 1)

Two classes named Circle and Square inherit from the Shape class. Circle and Square both inherit Area from the Shape class, but each computes Area differently. Which term is used to describe this object-oriented concept?

- A. polymorphism
- B. encapsulation
- C. superclassing
- D. overloading

Answer: A

Explanation:

You can use polymorphism to in two basic steps:

Create a class hierarchy in which each specific shape class derives from a common base class.

Use a virtual method to invoke the appropriate method on any derived class through a single call to the base class method.

NEW QUESTION 134

- (Topic 1)

This question requires that you evaluate the underlined text to determine if it is correct.

When creating a site to utilize message queuing, the "IP address" must be configured to MSMQ.

Select the correct answer if the underlined text does not make the statement correct. Select "No change is needed" if the underlined text makes the statement correct.

- A. No change is needed
- B. protocol
- C. host header
- D. port

Answer: B

Explanation:

MSMQ is a messaging protocol that allows applications running on separate servers/processes to communicate in a failsafe manner.

NEW QUESTION 139

HOTSPOT - (Topic 1)

For each of the following statements, select Yes if the statement is true. Otherwise, select No. Each correct selection is worth one point.

Answer Area

Description of Behavior	Yes	No
A linked list has a maximum of 100 nodes.	<input type="radio"/>	<input type="radio"/>
You can add new nodes anywhere in a linked list.	<input type="radio"/>	<input type="radio"/>
A linked list can be sorted.	<input type="radio"/>	<input type="radio"/>

- A. Mastered
- B. Not Mastered

Answer: A

Explanation:

Answer Area

Description of Behavior	Yes	No
A linked list has a maximum of 100 nodes.	<input type="radio"/>	<input checked="" type="radio"/>
You can add new nodes anywhere in a linked list.	<input checked="" type="radio"/>	<input type="radio"/>
A linked list can be sorted.	<input checked="" type="radio"/>	<input type="radio"/>

NEW QUESTION 142

- (Topic 1)

Which service can host an ASP.NET application?

- A. Internet Information Services
- B. Cluster Services
- C. Remote Desktop Services
- D. Web Services

Answer: A

Explanation:

Using Internet Information Services (IIS) Manager, you can create a local Web site for hosting an ASP.NET Web application.

NEW QUESTION 147

- (Topic 1)

This question requires that you evaluate the underlined text to determine if it is correct.

A table whose attributes depend only on the primary key must be at least second normal form.

Select the correct answer if the underlined text does not make the statement correct. Select "No change is needed" if the underlined text makes the statement correct.

- A. No change is needed
- B. first
- C. third
- D. fourth

Answer: A

Explanation:

2nd Normal Form Definition

A database is in second normal form if it satisfies the following conditions: It is in first normal form
 All non-key attributes are fully functional dependent on the primary key

NEW QUESTION 148

- (Topic 1)

You need to create a property in a class. Consumers of the class must be able to read the values of the property. Consumers of the class must be prevented from writing values to the property.

Which property procedure should you include?

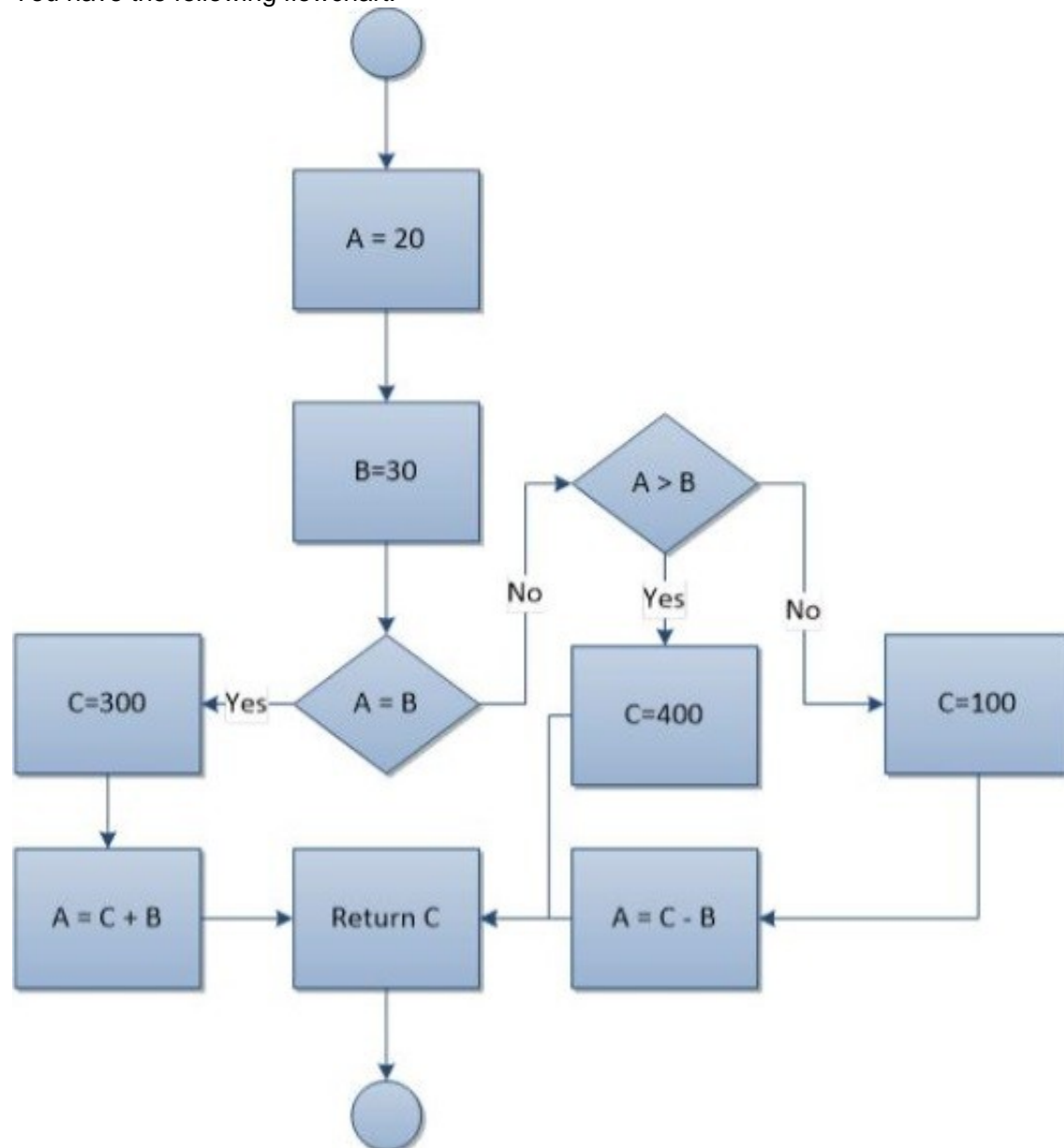
- A. Return
- B. Get
- C. Set
- D. Let

Answer: B

NEW QUESTION 153

HOTSPOT - (Topic 1)

You have the following flowchart:



Use the drop-down menus to select the answer choice that completes each statement Each correct selection is worth one point.

Answer Area

The value that is returned is [answer choice].

The value of A is [answer choice].

Answer Area

The value that is returned is [answer choice].

20
 100
 300
 400

The value of A is [answer choice].

20
 30
 70
 330

- A. Mastered
- B. Not Mastered

Answer: A

Explanation:

Answer Area

The value that is returned is [answer choice].

▼

20
100
300
400

The value of A is [answer choice].

▼

20
30
70
330

NEW QUESTION 157

- (Topic 1)

You need to create a stored procedure that passes in a person's name and age. Which statement should you use to create the stored procedure?

- A.

```
CREATE PROCEDURE StoreData (@UserName, @Age)
```
- B.

```
CREATE PROCEDURE StoreData
@UserName nvarchar(255),
@Age int
```
- C.

```
CREATE PROCEDURE StoreData
@UserName char,
@Age double
```
- D.

```
UPDATE PROCEDURE StoreData
@UserName nvarchar(255),
@Age int
```

- A. Option A
- B. Option B
- C. Option C
- D. Option D

Answer: B

Explanation:

Example (nvarchar and int are best here):

The following example creates a stored procedure that returns information for a specific employee by passing values for the employee's first name and last name.

This procedure accepts only exact matches for the parameters passed.

```
CREATE PROCEDURE HumanResources.uspGetEmployees
```

```
@LastName nvarchar(50),
```

```
@FirstName nvarchar(50) AS
```

```
SET NOCOUNT ON;
```

```
SELECT FirstName, LastName, JobTitle, Department FROM HumanResources.vEmployeeDepartment
```

```
WHERE FirstName = @FirstName AND LastName = @LastName; GO
```

NEW QUESTION 160

- (Topic 1)

Which language uses Data Definition Language (DDL) and Data Manipulation Language (DML)?

- A. SQL
- B. C++
- C. Pascal
- D. Java

Answer: A

Explanation:

SQL uses DDL and DML.

NEW QUESTION 163

- (Topic 1)

In which order do the typical phases of the Software Development Life Cycle occur?

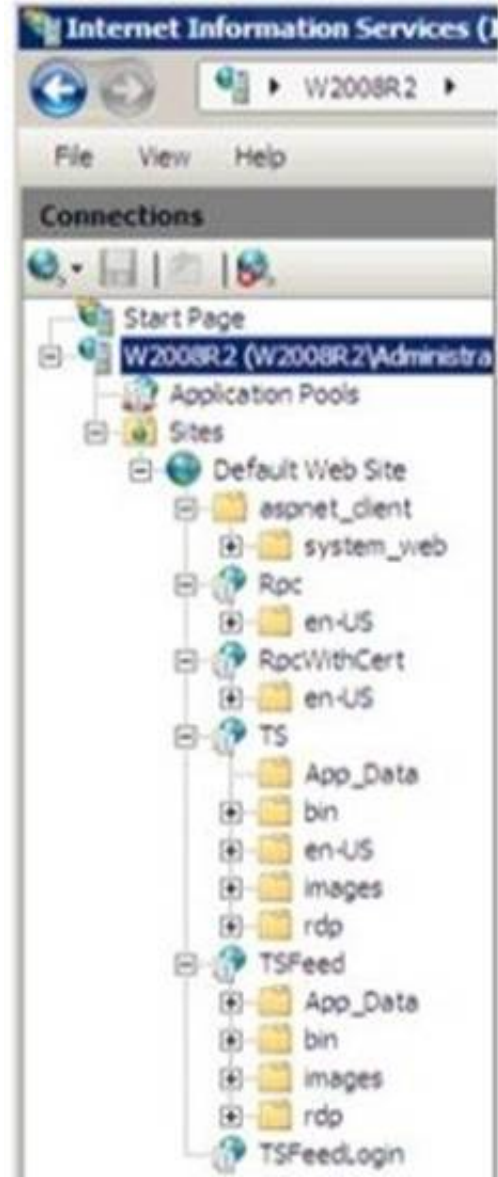
- A. Development, design, requirements gathering, and testing
- B. Design, requirements gathering, development, and testing
- C. Design, development, requirements gathering, and testing
- D. Requirements gathering, design, development, and testing

Answer: D

NEW QUESTION 167

HOTSPOT - (Topic 1)

You open the Internet Information Services 7.5 Manager console as shown in the following exhibit:



You need to examine the current configuration of the server W2008R2.

Use the drop-down menus to select the answer choice that answers each question. Each correct selection is worth one point.

Answer Area

How many sites are configured on server W2008R2?

How many applications are configured on server W2008R2?

Answer Area

How many sites are configured on server W2008R2?

0
1
5
13

How many applications are configured on server W2008R2?

0
1
5
13

- A. Mastered
- B. Not Mastered

Answer: A

Explanation:

Answer Area

How many sites are configured on server W2008R2?

0
1
5
13

How many applications are configured on server W2008R2?

0
1
5
13

NEW QUESTION 169

HOTSPOT - (Topic 1)

You are developing a web application.

You need to create the following graphic by using Cascading Style Sheets (CSS):



Use the drop-down menus to select the answer choice that completes each statement. Each correct selection is worth one point.

Answer Area

For the CSS Style **background-image**, you should use the value [answer choice]

For the CSS Style **border-radius**, you should use the value [answer choice]

Answer Area

For the CSS Style **background-image**, you should use the value [answer choice]

linear-gradient(to top, green, black);
linear-gradient(to bottom, green, black);
radial-gradient(green, black);
repeating-linear-gradient(green, black);

For the CSS Style **border-radius**, you should use the value [answer choice]

10px;
10px, 10px, 10px;
inherit;
initial;

- A. Mastered
- B. Not Mastered

Answer: A

Explanation:

Answer Area

For the CSS Style **background-image**, you should use the value [answer choice]

linear-gradient(to top, green, black);
linear-gradient(to bottom, green, black);
radial-gradient(green, black);
repeating-linear-gradient(green, black);

For the CSS Style **border-radius**, you should use the value [answer choice]

10px;
10px, 10px, 10px;
inherit;
initial;

NEW QUESTION 173

DRAG DROP - (Topic 1)

You are developing an application that displays a list of race results. The race results are stored in the following class:


```
public class RaceSpeedRecord
{
    public RaceSpeedRecord Faster;
    public RaceSpeedRecord Slower;

    public string Race;
    public double Time;
}
```

The code that manages the list is as follows:

```
public class Results
{
    public Results()
    {
        CurrentOlympicRecord = new RaceSpeedRecord();
    }

    public RaceSpeedRecord CurrentOlympicRecord;

    public void AddRace(string raceName, double time)
    {
    }
}
```

You need to implement the Add Race method.
Match the code segment to its location. (To answer, drag the appropriate code segment from the column on the left to its location on the right, Each code segment may be used once, more than once, or not at all. Each correct match is worth one point.)

Code Segments

current.Faster

current.Slower

current.Time

current.Race

Answer Area

```
public void AddRace(string raceName, double time)
{
    var current = CurrentOlympicRecord;

    while ( 

Code Segment

 > time)
        current = 

Code Segment

 ;

    var race = new RaceSpeedRecord
    {
        Race = raceName,
        Time = time,

        Faster = 

Code Segment


        Slower = 

Code Segment


    }

    current.Faster.Slower = race;
    current.Slower.Faster = race;
}
```

- A. Mastered
- B. Not Mastered

Answer: A

Explanation:

Code Segments

current.Faster

current.Slower

current.Time

current.Race

Answer Area

```

public void AddRace(string raceName, double time)
{
    var current = CurrentOlympicRecord;

    while (  > time)
        current =  ;

    var race = new RaceSpeedRecord
    {
        Race = raceName,
        Time = time,

        Faster = 
        Slower = 
    }

    current.Faster.Slower = race;
    current.Slower.Faster = race;
}
                
```

NEW QUESTION 175

- (Topic 1)

Where must Internet Information Services (IIS) be installed in order to run a deployed ASP. NET application?

- A. on the computer that you plan to deploy from
- B. on the computer that hosts the application
- C. on the Application Layer Gateway Service
- D. on the client computers

Answer: B

Explanation:

IIS is run on the web server. The web server is hosting the application.

NEW QUESTION 179

- (Topic 1)

You run the following code:

```

int a = 10;
int b = 20;
int c = 30;
int result = 0;

if (a <= b || c > a)
    result = 10;
else if (a <= b || c <= a)
    result = 20;
else
    result = 30;
                
```

What is the value of result when the code has completed?

- A. 10
- B. 20
- C. 30

Answer: B

Explanation:

The conditional-OR operator (||) performs a logical-OR of its bool operands. If the first operand evaluates to true, the second operand isn't evaluated. If the first operand evaluates to false, the second operator determines whether the OR expression as a whole evaluates to true or false.

NEW QUESTION 182

- (Topic 1)

You execute the following code.

```
bool beakerFull = true;
bool flameOn = false;
int iResult = 0;
if (beakerFull)
{
    if (flameOn)
    {
        iResult = 1;
    }
    else
    {
        iResult = 2;
    }
}
else
{
    iResult = 3;
}
```

What will the variable result be?

- A. 1
- B. 2
- C. 3

Answer: C

NEW QUESTION 184

- (Topic 1)

You need to allow a consumer of a class to modify a private data member. What should you do?

- A. Assign a value directly to the data member.
- B. Provide a private function that assigns a value to the data member.
- C. Provide a public function that assigns a value to the data member.
- D. Create global variables in the class.

Answer: C

Explanation:

In this example (see below), the Employee class contains two private data members, name and salary. As private members, they cannot be accessed except by member methods. Public methods named GetName and Salary are added to allow controlled access to the private members. The name member is accessed by way of a public method, and the salary member is accessed by way of a public read-only property.

Note: The private keyword is a member access modifier. Private access is the least permissive access level. Private members are accessible only within the body of the class or the struct in which they are declared

Example:

```
class Employee2
{
    private string name = "FirstName, LastName"; private double salary = 100.0;
    public string GetName()
    {
        return name;
    }
    public double Salary
    {
        get { return salary; }
    }
}
```

NEW QUESTION 189

- (Topic 1)

You have a Microsoft ASP.NET web application.

You need to store a value that can be shared across users on the server. Which type of state management should you use?

- A. Session
- B. ViewState
- C. Application
- D. Cookies

Answer: C

Explanation:

Application state is a data repository available to all classes in an ASP.NET application. Application state is stored in memory on the server and is faster than storing and retrieving information in a database. Unlike session state, which is specific to a single user session, application state applies to all users and sessions. Therefore, application state is a useful place to store small amounts of often-used data that does not change from one user to another.

Incorrect:

not A: Session State contains information that is pertaining to a specific session (by a particular client/browser/machine) with the server. It's a way to track what the user is doing on the site.. across multiple pages...amid the statelessness of the Web. e.g. the contents of a particular user's shopping cart is session data. Cookies can be used for session state. Not B: Viewstate is a state management technique in asp.net. ASP.NET Viewstate is preserving the data between the requests or postbacks and stored in hidden fields on the page.

NEW QUESTION 191

- (Topic 1)

Which term is used to describe small units of text that are stored on a client computer and retrieved to maintain state?

- A. trace
- B. cookie
- C. server transfer
- D. cross-page post

Answer: B

Explanation:

HTTP is a stateless protocol. This means that user data is not persisted from one Web page to the next in a Web site. One way to maintain state is through the use of cookies. Cookies store a set of user specific information, such as a reference identifier for a database record that holds customer information.

NEW QUESTION 193

- (Topic 2)

Simulating the final design of an application in order to ensure that the development is progressing as expected is referred to as:

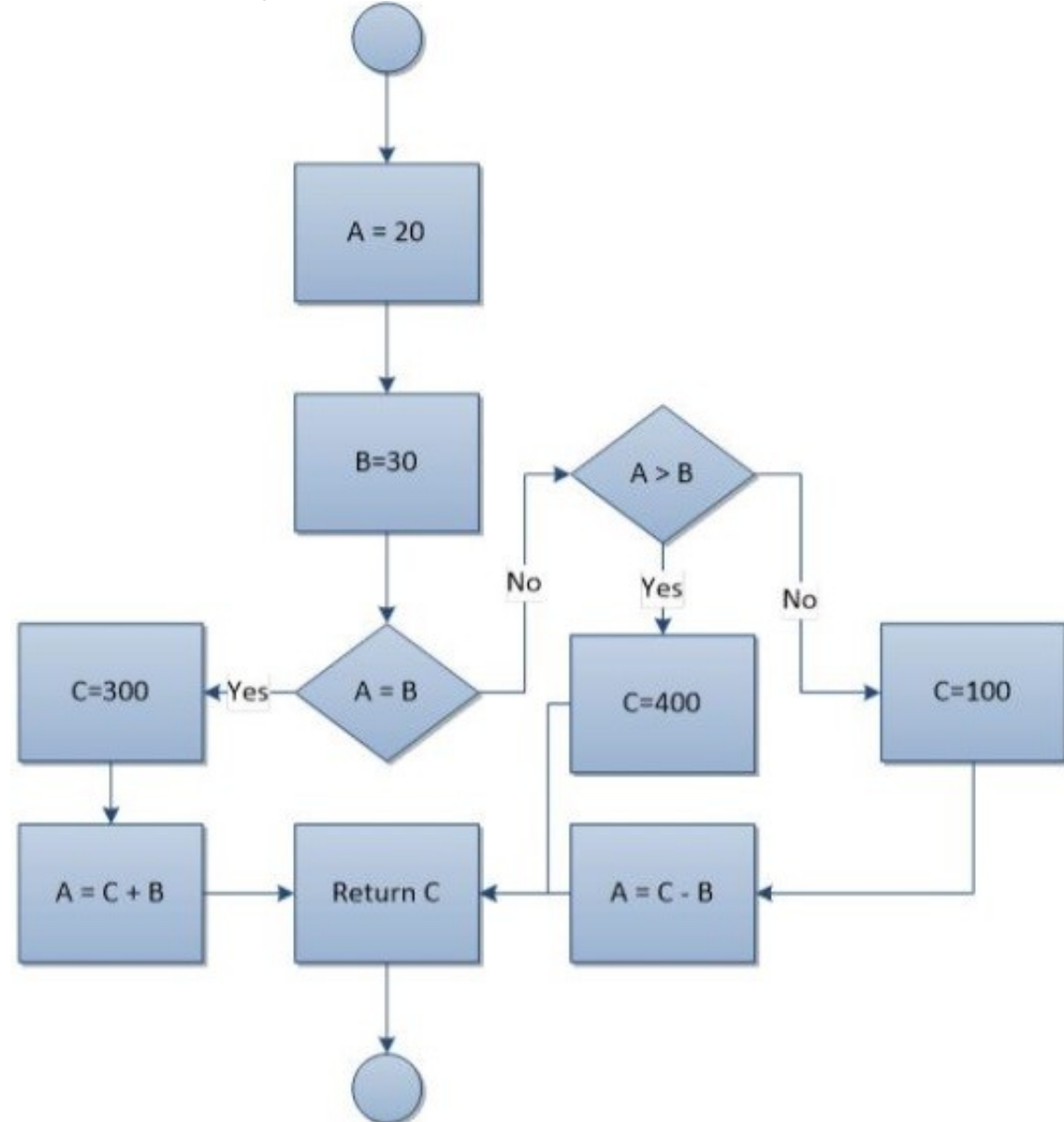
- A. Software testing
- B. Prototyping
- C. Flowcharting
- D. Analyzing requirements

Answer: A

NEW QUESTION 196

HOTSPOT - (Topic 2)

You have the following flowchart:



Use the drop-down menus to select the answer choice that completes each statement Each correct selection is worth one point.

Answer Area

The value that is returned is [answer choice].

The value of A is [answer choice].

Answer Area

The value that is returned is [answer choice].

20

100

300

400

The value of A is [answer choice].

20

30

70

330

- A. Mastered
- B. Not Mastered

Answer: A

Explanation:

Answer Area

The value that is returned is [answer choice].

20

100

300

400

The value of A is [answer choice].

20

30

70

330

NEW QUESTION 199

HOTSPOT - (Topic 2)

For each of the following statements, select Yes if the statement is true. Otherwise, select No. Each correct selection is worth one point.

Answer Area

Statement	Yes	No
XHTML attribute names must be in uppercase.	<input type="radio"/>	<input type="radio"/>
XHTML attribute values must be in quotation marks.	<input type="radio"/>	<input type="radio"/>
XHTML attribute minimization is forbidden.	<input type="radio"/>	<input type="radio"/>

- A. Mastered
- B. Not Mastered

Answer: A

Explanation:

Answer Area

Statement	Yes	No
XHTML attribute names must be in uppercase.	<input type="radio"/>	<input checked="" type="radio"/>
XHTML attribute values must be in quotation marks.	<input checked="" type="radio"/>	<input type="radio"/>
XHTML attribute minimization is forbidden.	<input checked="" type="radio"/>	<input type="radio"/>

NEW QUESTION 203

- (Topic 2)
The purpose of a constructor in a class is to:

- A. Initialize an object of that class.
- B. Inherit from the base class.
- C. Release the resources that the class holds.
- D. Create a value type.

Answer: A

Explanation:
Each value type has an implicit default constructor that initializes the default value of that type.

NEW QUESTION 204

- (Topic 2)
Which of the following must exist to inherit attributes from a particular class?

- A. Public properties
- B. A has-a relationship
- C. Static members
- D. An is-a relationship

Answer: A

Explanation:
There must be some public properties that can be inherited.

NEW QUESTION 206

- (Topic 2)
In the application life cycle, the revision of an application after it has been deployed is referred to as:

- A. Monitoring
- B. Maintenance
- C. Unit testing
- D. Integration

Answer: B

NEW QUESTION 210

HOTSPOT - (Topic 2)
You are creating a Windows Store application that uses the following gesture:



Use the drop-down menus to select the answer choice that completes each statement. Each correct selection is worth one point.

Answer Area

The gesture shown in the graphic is called [answer choice].

The surface displayed after the gesture has been completed is the [answer choice].

Answer Area

The gesture shown in the graphic is called [answer choice].

moving
pushing
sliding
swiping

The surface displayed after the gesture has been completed is the [answer choice].

app bar
canvas
charms
context menu

- A. Mastered
B. Not Mastered

Answer: A

Explanation:

Answer Area

The gesture shown in the graphic is called [answer choice].

moving
pushing
sliding
swiping

The surface displayed after the gesture has been completed is the [answer choice].

app bar
canvas
charms
context menu

NEW QUESTION 212

- (Topic 2)

You are creating an application that presents the user with a Windows Form. Which event is triggered each time the Windows Form receives focus?

- A. Load
B. Enter
C. Activated
D. paint

Answer: B

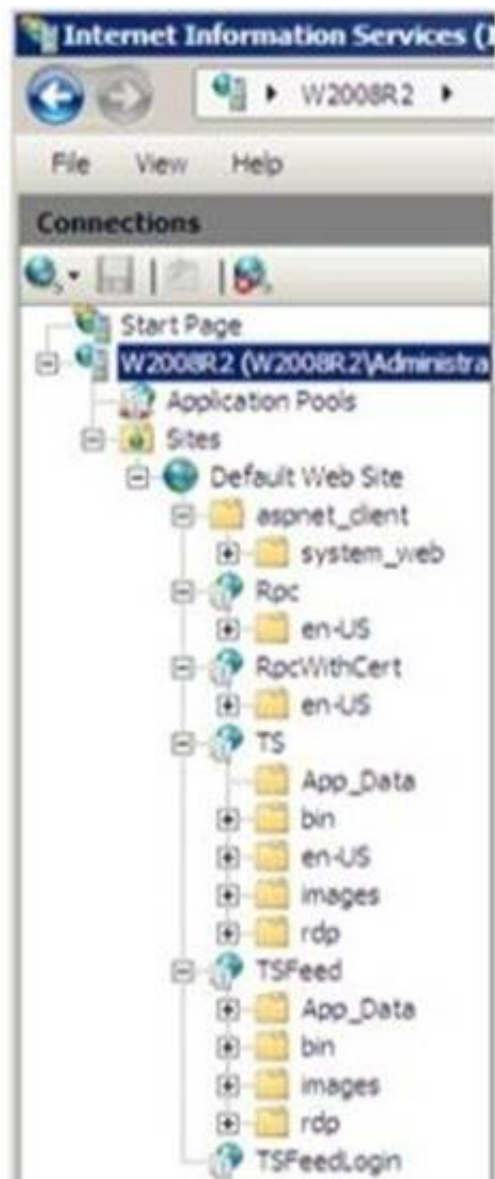
Explanation:

When you change the focus by using the mouse or by calling the Focus method, focus events of the Control class occur in the following order:
Enter GotFocus LostFocus Leave Validating Validated

NEW QUESTION 216

HOTSPOT - (Topic 2)

You open the Internet Information Services 7.5 Manager console as shown in the following exhibit:



You need to examine the current configuration of the server W2008R2.
Use the drop-down menus to select the answer choice that answers each question. Each correct selection is worth one point.

Answer Area

How many sites are configured on server W2008R2?	<input type="text"/>
How many applications are configured on server W2008R2?	<input type="text"/>

Answer Area

How many sites are configured on server W2008R2?	<input type="text"/> 0 1 5 13
How many applications are configured on server W2008R2?	<input type="text"/> 0 1 5 13

- A. Mastered
- B. Not Mastered

Answer: A

Explanation:

Answer Area

How many sites are configured on server W2008R2?	<input type="text"/> 0 1 5 13
How many applications are configured on server W2008R2?	<input type="text"/> 0 1 5 13

NEW QUESTION 219

HOTSPOT - (Topic 2)

For each of the following statements, select Yes if the statement is true. Otherwise, select No. Each correct selection is worth one point.

Answer Area

Description of Behavior	Yes	No
A linked list has a maximum of 100 nodes.	<input type="radio"/>	<input type="radio"/>
You can add new nodes anywhere in a linked list.	<input type="radio"/>	<input type="radio"/>
A linked list can be sorted.	<input type="radio"/>	<input type="radio"/>

- A. Mastered
- B. Not Mastered

Answer: A

Explanation:

Answer Area

Description of Behavior	Yes	No
A linked list has a maximum of 100 nodes.	<input type="radio"/>	<input checked="" type="radio"/>
You can add new nodes anywhere in a linked list.	<input checked="" type="radio"/>	<input type="radio"/>
A linked list can be sorted.	<input checked="" type="radio"/>	<input type="radio"/>

NEW QUESTION 224

DRAG DROP - (Topic 2)

You are extending an application that stores and displays the results of various types of foot races. The application contains the following definitions:

```
Public Interface IDisplayResult
    Sub Display()
End Interface
```

```
Public Class Race
    Public Seconds As Integer

    Public Overridable Sub Display()
        Console.WriteLine(Seconds)
    End Sub
End Class
```

The following code is used to display the result for a race:

```
Dim r1 = New FootRace()
Dim r2 = TryCast(r1, IDisplayResult)
r1.Seconds = 99

r1.Display()
r2.Display()
r1.DisplayRaw()
```

The contents of the console must be as follows:

- ? 99 seconds
- ? 1.65 minutes
- ? 99

You need to implement the FootRace class.

Match the method declaration to the method body. (To answer, drag the appropriate declaration from the column on the left to its body on the right. Each declaration may be used once, more than once, or not at all. Each correct match is worth one point.)

Code Segments

```
Public Overrides Sub Display()
```

```
Public Sub DisplayRaw()
```

```
Public Sub Display() Implements IDisplayResult.Display
```

```
Private Sub Display()
```

Answer Area

```
Public Class FootRace
    Inherits Race
    Implements IDisplayResult
```

Code Segment

```
    Console.WriteLine(Seconds & "seconds")
End Sub
```

Code Segment

```
    MyBase.Display()
End Sub
```

Code Segment

```
    Console.WriteLine(Seconds / 60 & " minutes")
End Sub
End Class
```

- A. Mastered
- B. Not Mastered

Answer: A

Explanation:

Code Segments

```
Public Overrides Sub Display()
```

```
Public Sub DisplayRaw()
```

```
Public Sub Display() Implements IDisplayResult.Display
```

```
Private Sub Display()
```

Answer Area

```
Public Class FootRace
    Inherits Race
    Implements IDisplayResult
```

```
Public Overrides Sub Display()
```

```
    Console.WriteLine(Seconds & "seconds")
End Sub
```

```
Public Sub DisplayRaw()
```

```
    MyBase.Display()
End Sub
```

```
Public Sub Display() Implements IDisplayResult.Display
```

```
    Console.WriteLine(Seconds / 60 & " minutes")
End Sub
End Class
```

NEW QUESTION 228

- (Topic 2)

You are creating a Web application. The application will be consumed by client computers that run a variety of Web browsers. Which term is used to describe the process of making the application available for client computers to access?

- A. Deploying
- B. Hosting
- C. Virtualization
- D. Casting

Answer: B

Explanation:

You host web applications.

NEW QUESTION 231

- (Topic 2)

You are writing a Web application that processes room reservation requests. You need to verify that the room that a guest has selected is not already reserved by another guest.

Which type of programming should you use to determine whether the room is still available when the request is made?

- A. client-side
- B. batch processing
- C. server-side
- D. multithreaded

Answer: C

Explanation:

For room availability we need to check a database located on a server.

NEW QUESTION 232

- (Topic 2)

You have a table named ITEMS with the following fields:

? ID (integer, primary key. auto generated)

? Description (text)

? Completed (Boolean)

You need to insert the following data in the table: "Cheese", False

Which statement should you use?

- A. INSERT INTO ITEMS (Description, Completed) VALUES ('Cheese', 1)
- B. INSERT INTO ITEMS (ID, Description, Completed) VALUES (NEWID(), 'Cheese', 0)
- C. INSERT INTO ITEMS (ID, Description, Completed) VALUES (1, 'Cheese', 0)
- D. INSERT INTO ITEMS (Description, Completed) VALUES ('Cheese', 0)

Answer: D

Explanation:

The string values TRUE and FALSE can be converted to bit values: TRUE is converted to 1 and FALSE is converted to 0.

Incorrect:

Not B, not C: ID is autogenerated and should not be specified.

NEW QUESTION 235

- (Topic 2)

This question requires that you evaluate the underlined text to determine if it is correct. Converting an object to a more general type is called upcasting.

Select the correct answer if the underlined text does not make the statement correct. Select "No change is needed" if the underlined text makes the statement correct.

- A. No change is needed
- B. downcasting
- C. interfacing
- D. flexing

Answer: A

Explanation:

Casting up a hierarchy means casting from a derived object reference to a base object reference.

NEW QUESTION 239

- (Topic 2)

What are two advantages of normalization in a database? (Choose two.)

- A. reduces schema limitations
- B. minimizes impact of data corruption
- C. decreases space used on disk
- D. prevents data inconsistencies

Answer: CD

NEW QUESTION 243

- (Topic 2)

A class named Manager is derived from a parent class named Employee. The Manager class includes characteristics that are unique to managers.

Which term is used to describe this object-oriented concept?

- A. inheritance
- B. data modeling
- C. data hiding
- D. encapsulation

Answer: A

Explanation:

Classes (but not structs) support the concept of inheritance. A class that derives from another class (the base class) automatically contains all the public, protected, and internal members of the base class except its constructors and destructors.

Incorrect:

not D: Encapsulation is sometimes referred to as the first pillar or principle of object- oriented programming. According to the principle of encapsulation, a class or struct can specify how accessible each of its members is to code outside of the class or struct. Methods and variables that are not intended to be used from outside of the class or assembly can be hidden to limit the potential for coding errors or malicious exploits.

NEW QUESTION 248

- (Topic 2)

You need to create a property in a class. Consumers of the class must be able to read the values of the property. Consumers of the class must be prevented from writing values to the property.

Which property procedure should you include?

- A. Set
- B. Get
- C. Let
- D. Return

Answer: B

NEW QUESTION 249

- (Topic 2)

This question requires that you evaluate the underlined text to determine if it is correct.

The bubble sort algorithm steps through the list to be sorted, comparing adjacent items and swapping them if they are in the wrong order.

Select the correct answer if the underlined text does not make the statement correct. Select "No change is needed" if the underlined text makes the statement correct.

- A. No change is needed
- B. merge
- C. library
- D. insertion

Answer: A

NEW QUESTION 253

HOTSPOT - (Topic 2)

For each of the following statements, select Yes if the statement is true. Otherwise, select No. Each correct selection is worth one point.

Answer Area

Description of Behavior	Yes	No
The "is a" relationship between classes refers to composition.	<input type="radio"/>	<input type="radio"/>
The "has a" relationship between classes refers to inheritance.	<input type="radio"/>	<input type="radio"/>
Both composition and inheritance allow you to create sub-objects.	<input type="radio"/>	<input type="radio"/>

- A. Mastered
- B. Not Mastered

Answer: A

Explanation:

Answer Area

Description of Behavior	Yes	No
The "is a" relationship between classes refers to composition.	<input type="radio"/>	<input checked="" type="radio"/>
The "has a" relationship between classes refers to inheritance.	<input type="radio"/>	<input checked="" type="radio"/>
Both composition and inheritance allow you to create sub-objects.	<input checked="" type="radio"/>	<input type="radio"/>

NEW QUESTION 255

HOTSPOT - (Topic 2)

For each of the following statements, select Yes if the statement is true. Otherwise, select No. Each correct selection is worth one point.

Answer Area

Description of Behavior	Yes	No
A queue's items are stored in the order they were added.	<input type="radio"/>	<input type="radio"/>
A queue is a first in, first out (FIFO) data structure.	<input type="radio"/>	<input type="radio"/>
A queue has a limited number of items.	<input type="radio"/>	<input type="radio"/>

- A. Mastered
- B. Not Mastered

Answer: A

Explanation:

Answer Area

Description of Behavior	Yes	No
A queue's items are stored in the order they were added.	<input checked="" type="radio"/>	<input type="radio"/>
A queue is a first in, first out (FIFO) data structure.	<input checked="" type="radio"/>	<input type="radio"/>
A queue has a limited number of items.	<input type="radio"/>	<input checked="" type="radio"/>

NEW QUESTION 260

- (Topic 2)

A table named Student has columns named ID, Name, and Age. An index has been created on the ID column. What advantage does this index provide?

- A. It reorders the records alphabetically.
- B. It reorders the records numerically.
- C. It speeds up query execution.
- D. It minimizes storage requirements.

Answer: C

Explanation:

Faster to access an index table.

NEW QUESTION 262

- (Topic 2)

You are creating a database for a student directory. The Students table contains the following fields:

```
firstName
lastName
emailAddress
telephoneNumber
```

Which statement will retrieve only the first name, last name, and telephone number for every student listed in the directory?

- A. `SELECT firstName, lastName, telephoneNumber FROM Students`
- B. `WHERE Students SELECT firstName, lastName, telephoneNumber`
- C. `WHERE Students SELECT *`
- D. `SELECT firstName, lastName, telephoneNumber IN Students`
- E. `SELECT * FROM Students`

A. Option A

B. Option B

C. Option C

D. Option D

Answer: A

Explanation:

Use SELECT??FROM and list the fields you want to retrieve.

NEW QUESTION 263

- (Topic 2)

This question requires that you evaluate the underlined text to determine if it is correct.

To minimize the amount of storage used on the hard drive by an application that generates many small files, you should make the partition as small as possible.

Select the correct answer if the underlined text does not make the statement correct. Select "No change is needed" if the underlined text makes the statement correct.

A. No change is needed

B. file allocation table

C. block size

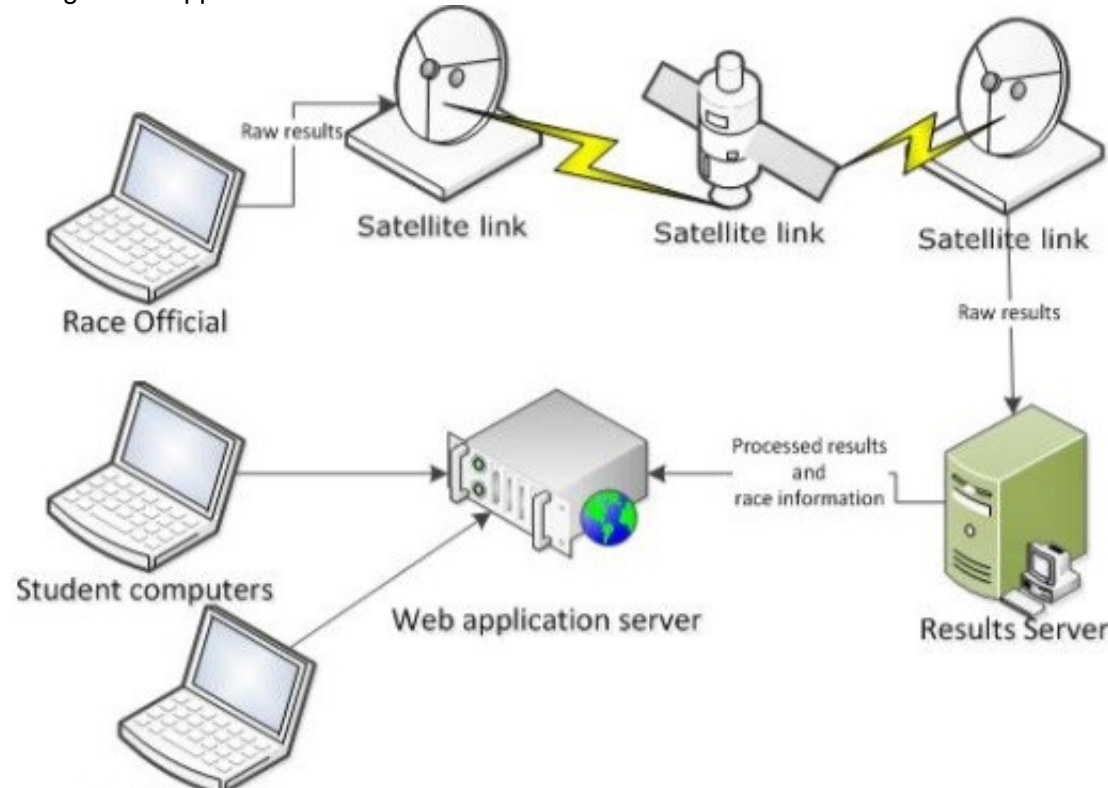
D. folder and file names

Answer: C

NEW QUESTION 265

HOTSPOT - (Topic 2)

You are reviewing the architecture for a system that allows race officials to enter the results of 5K race results. The results are then made available to students using a web application. The architecture is shown below:



Use the drop-down menus to select the answer choice that answers each question. Each correct selection is worth one point.

Answer Area

To minimize the time between when a race official records the results and when the results are available on the web, which part of the system is critical?

To increase the number of students that can access race results, what element should be added to the system?

Answer Area

To minimize the time between when a race official records the results and when the results are available on the web, which part of the system is critical?

satellite link

student computer

race official computer

web application server

To increase the number of students that can access race results, what element should be added to the system?

satellite link

race officials

results servers

web application servers

- A. Mastered
- B. Not Mastered

Answer: A

Explanation:

Answer Area

To minimize the time between when a race official records the results and when the results are available on the web, which part of the system is critical?

satellite link

student computer

race official computer

web application server

To increase the number of students that can access race results, what element should be added to the system?

satellite link

race officials

results servers

web application servers

NEW QUESTION 270

- (Topic 2)

You are designing a Windows Store application.

You need to design the application so that users can share content by connecting two or more devices by physically tapping the devices together.

Which user experience (UX) guideline for Windows Store applications should you use?

- A. share and data exchange
- B. device-awareness
- C. location-awareness
- D. proximity gestures

Answer: A

NEW QUESTION 271

- (Topic 2)

Which language allows you to dynamically create content on the client side?

- A. Cascading Style Sheets (CSS)
- B. JavaScript (JS)
- C. Extensible Markup Language (XML)
- D. Hypertext Markup Language (HTML)

Answer: B

Explanation:

JavaScript (JS) is a dynamic computer programming language. It is most commonly used as part of web browsers, whose implementations allow client-side scripts to interact with the user, control the browser, communicate asynchronously, and alter the document content that is displayed.

NEW QUESTION 272

HOTSPOT - (Topic 2)

You are developing a web application.

You need to create the following graphic by using Cascading Style Sheets (CSS):



Use the drop-down menus to select the answer choice that completes each statement. Each correct selection is worth one point.

Answer Area

For the CSS Style **background-image**, you should use the value
[answer choice]

For the CSS Style **border-radius**, you should use the value **[answer choice]**

Answer Area

For the CSS Style **background-image**, you should use the value
[answer choice]

linear-gradient(to top, green, black);
 linear-gradient(to bottom, green, black);
 radial-gradient(green, black);
 repeating-linear-gradient(green, black);

For the CSS Style **border-radius**, you should use the value **[answer choice]**

10px;
 10px, 10px, 10px;
 inherit;
 initial;

- A. Mastered
- B. Not Mastered

Answer: A

Explanation:

Answer Area

For the CSS Style **background-image**, you should use the value
[answer choice]

linear-gradient(to top, green, black);
 linear-gradient(to bottom, green, black);
 radial-gradient(green, black);
 repeating-linear-gradient(green, black);

For the CSS Style **border-radius**, you should use the value **[answer choice]**

10px;
 10px, 10px, 10px;
 inherit;
 initial;

NEW QUESTION 273

- (Topic 2)

You execute the following code.

```
Dim beakerFull As Boolean = True
Dim flameOn As Boolean = False
Dim iResult As Integer

Select Case beakerFull
    Case True
        Select Case flameOn
            Case True
                iResult = 1
            Case False
                iResult = 2
        End Select
    Case False
        Select Case flameOn
            Case False
                iResult = 3
            Case True
                iResult = 4
        End Select
End Select
```

What will the variable result be?

- A. 1
- B. 2
- C. 3
- D. 4

Answer: :B

NEW QUESTION 277

- (Topic 2)

Which programming language is characterized as client-side, dynamic and weakly typed?

- A. ASP.NET
- B. C#
- C. JavaScript
- D. HTML

Answer: C

Explanation:

JavaScript is characterized as a dynamic, weakly typed, prototype-based language with first-class functions. It is primarily used in the form of client-side JavaScript for the development of dynamic websites.

NEW QUESTION 282

- (Topic 2)

Which type of function can a derived class override?

- A. A Protected Overridable member function
- B. A Shared function
- C. A Private Overridable function
- D. A non-overridable public member function

Answer: A

Explanation:

The Overridable modifier allows a property or method in a class to be overridden in a derived class. You cannot specify Overridable on a Private method.

NEW QUESTION 287

- (Topic 2)

You need to evaluate the following expression:

$(A > B) \text{ AND } (C < D)$

What is the value of this expression if $A=3$, $B=4$, $C=4$, and $D=5$?

- A. 4
- B. 5
- C. False
- D. Null
- E. True

Answer: D

Explanation:

$A > B$ is false.

NEW QUESTION 289

- (Topic 2)

How does a console-based application differ from a Windows Forms application?

- A. Windows Forms applications can access network resources.
- B. Console-based applications do not display a graphical interface.
- C. Console-based applications require the XNA Framework to run.
- D. Windows Forms applications do not provide a method for user input.

Answer: B

NEW QUESTION 292

- (Topic 2)

This question requires that you evaluate the underlined text to determine if it is correct.

A table whose attributes depend only on the primary key must be at least second normal form.

Select the correct answer if the underlined text does not make the statement correct. Select "No change is needed" if the underlined text makes the statement correct.

- A. No change is needed
- B. first
- C. third
- D. fourth

Answer: A

Explanation:

2nd Normal Form Definition

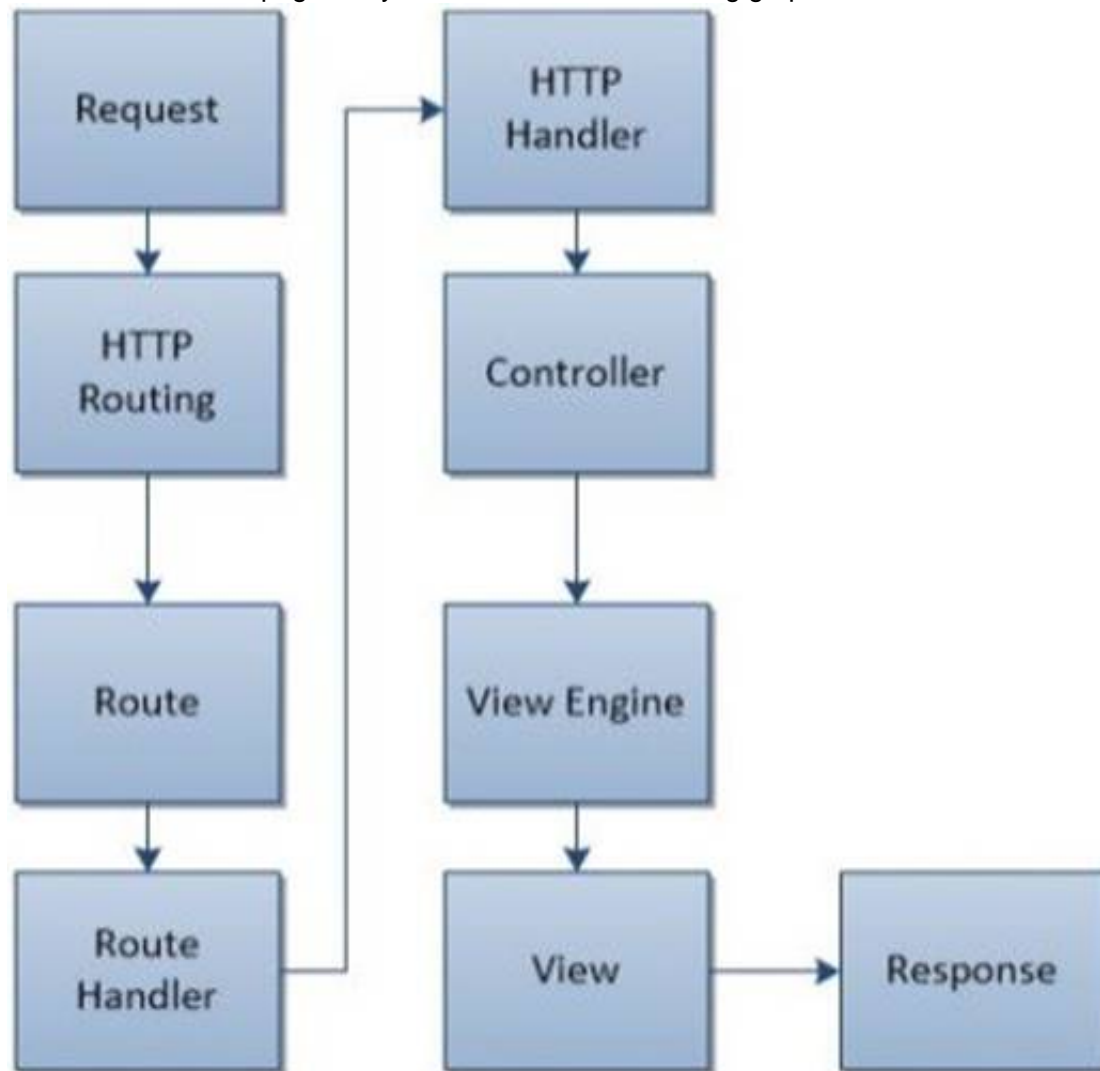
A database is in second normal form if it satisfies the following conditions: It is in first normal form

All non-key attributes are fully functional dependent on the primary key

NEW QUESTION 296

HOTSPOT - (Topic 2)

The ASP.NET MVC page lifecycle is shown in the following graphic:



Use the drop-down menus to select the answer choice that completes each statement Each correct selection is worth one point.

Answer Area

The [answer choice] event determines which action method is needed and then calls that method.

The URL pattern is matched during the [answer choice] event.

Answer Area

The [answer choice] event determines which action method is needed and then calls that method.

View
Route
Controller
HTTP Handler

The URL pattern is matched during the [answer choice] event.

View
Route
Controller
HTTP Handler

- A. Mastered
- B. Not Mastered

Answer: A

Explanation:

Answer Area

The [answer choice] event determines which action method is needed and then calls that method.

View
Route
Controller
HTTP Handler

The URL pattern is matched during the [answer choice] event.

View
Route
Controller
HTTP Handler

NEW QUESTION 301

HOTSPOT - (Topic 2)

For each of the following statements, select Yes if the statement is true. Otherwise, select No. Each correct selection is worth one point.

Answer Area

Test Behavior	Yes	No
The primary goal of unit testing is to take the smallest piece of testable software in the application, isolate it from the remainder of the code, and determine whether it behaves exactly as expected.	<input type="radio"/>	<input type="radio"/>
In unit testing, each unit is tested separately before integrating the units into modules to test the interfaces between modules.	<input type="radio"/>	<input type="radio"/>
The driver that you use in unit testing simulates a calling unit and the stub simulates a called unit.	<input type="radio"/>	<input type="radio"/>

- A. Mastered
B. Not Mastered

Answer: A

Explanation:

Answer Area

Test Behavior	Yes	No
The primary goal of unit testing is to take the smallest piece of testable software in the application, isolate it from the remainder of the code, and determine whether it behaves exactly as expected.	<input checked="" type="radio"/>	<input type="radio"/>
In unit testing, each unit is tested separately before integrating the units into modules to test the interfaces between modules.	<input checked="" type="radio"/>	<input type="radio"/>
The driver that you use in unit testing simulates a calling unit and the stub simulates a called unit.	<input checked="" type="radio"/>	<input type="radio"/>

NEW QUESTION 306

- (Topic 2)

You are migrating several HTML pages to your website. Many of these pages contain HTML <center> and tags. Which XHTML document type declaration should you use?

A.

<!DOCTYPE html PUBLIC "-//W3C//DTD XHTML 1.0 Strict//EN" "http://www.w3.org/TR/xhtml1/DTD/xhtml1-strict.dtd">

B.

<!DOCTYPE html PUBLIC "-//W3C//DTD XHTML 1.0 Frameset//EN" "http://www.w3.org/TR/xhtml1/DTD/xhtml1-frameset.dtd">

C.

<!DOCTYPE HTML PUBLIC "-//W3C//DTD HTML 4.01 Transitional//EN" "http://www.w3.org/TR/html4/loose.dtd">

D.

<!DOCTYPE html>

- A. Option A
- B. Option B
- C. Option C
- D. Option D

Answer: C

Explanation:

The <!DOCTYPE> declaration is not an HTML tag; it is an instruction to the web browser about what version of HTML the page is written in. XHTML 1.0 Transitional

This DTD contains all HTML elements and attributes, INCLUDING presentational and deprecated elements (like font). Framesets are not allowed. The markup must also be written as well-formed XML.

```
<!DOCTYPE html PUBLIC "-//W3C//DTD XHTML 1.0 Transitional//EN" "http://www.w3.org/TR/xhtml1/DTD/xhtml1-transitional.dtd">
```

NEW QUESTION 309

- (Topic 2)

You are creating an ASP. NET Web application.

Which line of code should you use to require a control to process on the computer that hosts the application?

- A. runat= "server"
- B. redirect*="HostPag
- C. htm"
- D. AutoEventWireup="true"
- E. defaultRedirect="ServerPag
- F. htm"

Answer: A

NEW QUESTION 310

- (Topic 2)

This question requires that you evaluate the underlined text to determine if it is correct. The default entry point for a console application is the Class method.

Select the correct answer if the underlined text does not make the statement correct. Select "No change is needed" if the underlined text makes the statement correct.

- A. No change is needed
- B. Main
- C. Program
- D. Object

Answer: B

Explanation:

The default entry point for a console application is the Class Main.

NEW QUESTION 311

- (Topic 2)

Which two types of information should you include in an effective test case? (Choose two.)

- A. any pre-conditions necessary to test the case
- B. the expected result from testing the case
- C. multiple actions combined as a single step to test the case
- D. the stakeholders who originated the test case

Answer: BC

Explanation:

You can create manual test cases using Microsoft Test Manager that have both action and validation test steps. You can also share a set of common test steps between multiple test cases called shared steps. This simplifies maintenance of test steps if your application under test changes.

NEW QUESTION 312

- (Topic 2)

You execute the following code.


```
Dim beakerFull As Boolean = True
Dim flameOn As Boolean = False
Dim iResult As Integer = 0

If beakerFull = True Then
    If flameOn = True Then
        iResult = 1
    Else
        iResult = 2
    End If
Else
    iResult = 3
End If
```

What will the variable result be?

- A. 1
- B. 2
- C. 3

Answer: C

NEW QUESTION 317

HOTSPOT - (Topic 2)

For each of the following statements, select Yes if the statement is true. Otherwise, select No. Each correct selection is worth one point.

Answer Area

Statement	Yes	No
Within an XHTML document, the XHTML DOCTYPE declaration is mandatory.	<input type="radio"/>	<input type="radio"/>
Within an XHTML document, the XML namespace attribute in the html tag is mandatory.	<input type="radio"/>	<input type="radio"/>
Within an XHTML document, the html, head, title, and body tags are mandatory.	<input type="radio"/>	<input type="radio"/>

- A. Mastered
- B. Not Mastered

Answer: A

Explanation:

Answer Area

Statement	Yes	No
Within an XHTML document, the XHTML DOCTYPE declaration is mandatory.	<input checked="" type="radio"/>	<input type="radio"/>
Within an XHTML document, the XML namespace attribute in the html tag is mandatory.	<input checked="" type="radio"/>	<input type="radio"/>
Within an XHTML document, the html, head, title, and body tags are mandatory.	<input checked="" type="radio"/>	<input type="radio"/>

NEW QUESTION 321

- (Topic 2)

This question requires that you evaluate the underlined text to determine if it is correct. The Response.Redirect method is used to transfer processing of the current page to a new

page, and then return processing back to the calling page once processing of the new page has completed.

Select the correct answer if the underlined text does not make the statement correct. Select "No change is needed" if the underlined text makes the statement correct.

- A. No change is needed
- B. Server.Transfer method
- C. Server.Execute method
- D. meta http-equiv="refresh" tag

Answer: C

Explanation:

The Execute method calls an .asp file, and processes it as if it were part of the calling ASP script. The Execute method is similar to a procedure call in many programming languages.

Incorrect:

* Response.Redirect Method

The Redirect method causes the browser to redirect the client to a different URL.

* The Server.Transfer method sends all of the information that has been assembled for processing by one .asp file to a second .asp file.

NEW QUESTION 323

- (Topic 2)

You run the following code:

```
Dim a As Integer = 10
Dim b As Integer = 20
Dim c As Integer = 30
Dim result As Integer = 0

If a <= b Or c > a Then
    result = 10
ElseIf a <= b Or c <= a Then
    result = 20
Else
    result = 30
End If
```

What is the value of result when the code has completed?

- A. 10
- B. 20
- C. 30

Answer: B

Explanation:

The conditional-OR operator (||) performs a logical-OR of its bool operands. If the first operand evaluates to true, the second operand isn't evaluated. If the first operand evaluates to false, the second operator determines whether the OR expression as a whole evaluates to true or false.

NEW QUESTION 328

- (Topic 2)

In the life cycle of an ASP. NET Web page, which phase follows the SaveStateComplete phase?

- A. Load
- B. Render
- C. PostInit
- D.PostBack

Answer: B

Explanation:

The SaveStateComplete event is raised after the view state and control state of the page and controls on the page are saved to the persistence medium. This is the last event raised before the page is rendered to the requesting browser.

NEW QUESTION 331

- (Topic 2)

Your application must pull data from a database that resides on a separate server. Which action must you perform before your application can retrieve the data?

- A. Establish a connection to the database by using the appropriate data provider.
- B. Create a routine that bypasses firewalls by using Windows Management Instrumentation (WMI).
- C. Install the database on each client computer.
- D. Configure the network routers to allow database connections.

Answer: A

NEW QUESTION 333

- (Topic 2)

What is displayed when you attempt to access a Web service by using a Web browser?

- A. a visual depiction of your preliminary connection to the Web service
- B. a listing of methods that are available in the Web service
- C. an error page explaining that you have accessed the Web service incorrectly
- D. a directory listing of the Web services application structure

Answer: B

Explanation:

The server, in response to this request, displays the Web service's HTML description page.

The Web service's HTML description page shows you all the Web service methods supported by a particular Web service. Link to the desired Web service method and enter the necessary parameters to test the method and see the XML response.

NEW QUESTION 335

- (Topic 2)

An application presents the user with a graphical interface. The interface includes buttons that the user clicks to perform tasks. Each time the user clicks a button, a method is called that corresponds to that button.

Which term is used to describe this programming model?

- A. Event driven
- B. Structured
- C. Service oriented
- D. Functional

Answer: A

NEW QUESTION 336

- (Topic 2)

This question requires that you evaluate the underlined text to determine if it is correct.

The duplication of code so that modifications can happen in parallel is known as separating.

Select the correct answer if the underlined text does not make the statement correct. Select "No change is needed" if the underlined text makes the statement correct.

- A. No change is needed
- B. branching
- C. merging
- D. splitting

Answer: B

Explanation:

When you develop applications in a team-based environment, you might need to access multiple versions of your application at the same time. If you copy one or more areas of your code into a separate branch, you can update one copy while you preserve the original version, or you can update both branches to meet different needs. Depending on your development goals, you can later merge the changes from multiple branches to create a single version that reflects all changes

NEW QUESTION 337

- (Topic 2)

Your database administrators will not allow you to write SQL code in your application. How should you retrieve data in your application?

- A. Reference an index in the database.
- B. Call a stored procedure.
- C. Query a database view.
- D. Script a SELECT statement to a file.

Answer: B

Explanation:

The SQL will only be inside the stored procedure.

NEW QUESTION 342

- (Topic 2)

You are creating an application for a help desk center. Calls must be handled in the same order in which they were received.

Which data structure should you use?

- A. Queue
- B. Hashtable
- C. Stack
- D. Binary tree

Answer: :A

NEW QUESTION 344

- (Topic 2)

The purpose of the Finally section in an exception handler is to:

- A. Execute code only when an exception is thrown.
- B. Break out of the error handler.
- C. Execute code regardless of whether an exception is thrown.
- D. Conclude the execution of the application.

Answer: C

Explanation:

By using a finally block, you can clean up any resources that are allocated in a try block, and you can run code even if an exception occurs in the try block. Typically, the statements of a finally block run when control leaves a try statement. The transfer of control can occur as a result of normal execution, of execution of a break, continue, goto, or return statement, or of propagation of an exception out of the try statement.

NEW QUESTION 348

- (Topic 2)

When a web service is referenced from a client application in Microsoft Visual Studio, which two items are created? (Choose two.)

- A. a stub
- B. a proxy
- C. a.disco file
- D. a.wsdlfile

Answer: CD

Explanation:

A .wsdl file that references the Web service is created, together with supporting files, such as discovery (.disco and .discomap) files, that include information about where the Web service is located.

NEW QUESTION 349

- (Topic 2)

Class C and Class D inherit from Class B. Class B inherits from Class A. The classes have the methods shown in the following table.

Class	Method
A	m1
B	m2
C	m3
D	m4

All methods have a protected scope.

Which methods does Class C have access to?

- A. only m1, m3
- B. only m2, m3
- C. m1, m3, m4
- D. m1, m2, m3
- E. m2, m3, m4
- F. only m3, m4

Answer: D

NEW QUESTION 351

DRAG DROP - (Topic 2)

You are developing an application to display track and field race results.

The application must display the race results twice. The first time it must display only the winner and runner-up. The second time it must display all participants.

The code used to display results is shown below.

```
Public Sub Display()
    For Each ranking In Rankings(True)
        DisplayName(ranking)
    Next

    For Each ranking In Rankings(False)
        Displayname(ranking)
    Next
End Sub
```

You need to implement the Rankings() function.

Complete the function to meet the requirements. (To answer, drag the appropriate code segment from the column on the left to its location on the right. Each code segment may be used once, more than once, or not at all. Each correct match is worth one point.)

Code Segments	Answer Area
<div>Exit For</div>	<pre>Private Iterator Function Rankings(top2Only As Boolean) _ As IEnumerable(Of String)</pre>
<div>Exit Function</div>	<div>Code Segment "John"</div>
<div>Return</div>	<div>Code Segment "Nancy"</div>
<div>Yield</div>	<pre> If (top2Only) Then</pre>
	<div>Code Segment</div>
	<pre> End If</pre>
	<div>Code Segment "Chris"</div>
	<pre>End Function</pre>

- A. Mastered
B. Not Mastered

Answer: A

Explanation:

Code Segments	Answer Area
<div>Exit For</div>	<pre>Private Iterator Function Rankings(top2Only As Boolean) _ As IEnumerable(Of String)</pre>
<div>Exit Function</div>	<div>Yield "John"</div>
<div>Return</div>	<div>Yield "Nancy"</div>
<div>Yield</div>	<pre> If (top2Only) Then</pre>
	<div>Exit Function</div>
	<pre> End If</pre>
	<div>Yield "Chris"</div>
	<pre>End Function</pre>

NEW QUESTION 355

- (Topic 2)

Which three are valid SQL keywords? (Choose three.)

- A. GET
B. FROM
C. SELECT
D. WHAT
E. WHERE

Answer: BCE

Explanation:

Example:
SELECT * FROM Customers WHERE Country='Mexico';

NEW QUESTION 358

- (Topic 2)

Which three items are benefits of encapsulation? (Choose three.)

- A. restricted access
B. flexibility
C. maintainability
D. performance
E. inheritance

Answer: ABC

Explanation:

Encapsulation is the packing of data and functions into a single component. In programming languages, encapsulation is used to refer to one of two related but distinct notions, and sometimes to the combination thereof:

* A language mechanism for restricting access to some of the object's components.

* A language construct that facilitates the bundling of data with the methods (or other functions) operating on that data.

Incorrect:

not E: Encapsulation is one of the four fundamental OOP concepts. The other three are inheritance, polymorphism, and abstraction.

NEW QUESTION 360

- (Topic 2)

You need to allow a consumer of a class to modify a private data member. What should you do?

- A. Provide a public function that assigns a value to the data member.
- B. Create global variables in the class.
- C. Assign a value directly to the data member.
- D. Provide a private function that assigns a value to the data member.

Answer: A

Explanation:

In this example (see below), the Employee class contains two private data members, name and salary. As private members, they cannot be accessed except by member methods. Public methods named GetName and Salary are added to allow controlled access to the private members. The name member is accessed by way of a public method, and the salary member is accessed by way of a public read-only property.

Note: The private keyword is a member access modifier. Private access is the least permissive access level. Private members are accessible only within the body of the class or the struct in which they are declared

Example:

```
class Employee2
{
private string name = "FirstName, LastName"; private double salary = 100.0;
public string GetName()
{
return name;
}
public double Salary
{
get { return salary; }
}
}
```

NEW QUESTION 361

- (Topic 2)

You are creating an application that presents the user with a Windows Form. You need to configure the application to display a message box to confirm that the user wants to close the form.

Which event should you handle?

- A. Deactivate
- B. FormClosed
- C. Leave
- D. FormClosing

Answer: D

Explanation:

The Closing event occurs as the form is being closed.

NEW QUESTION 362

- (Topic 2)

How does a console-based application differ from a Windows Store app?

- A. Windows Store apps do not provide a method for user input
- B. Console-based applications do not display a graphical interface.
- C. Windows Store apps can access network resources.
- D. Console-based applications require the XNA Framework to run.

Answer: B

NEW QUESTION 363

- (Topic 2)

You create an object of type ANumber. The class is defined as follows.

```
Public Class ANumber
    Private _number As Integer = 3

    Public Sub New()
    End Sub

    Public Sub New(number As Integer)
        _number = number
    End Sub

End Class
```

The code is executed as follows.

```
Dim myNumber As New ANumber(7)
```

What is the value of number after the code is executed?

- A. Null
- B. 3
- C. 7

Answer: D

NEW QUESTION 365

- (Topic 2)

You need to create a stored procedure that passes in a person's name and age. Which statement should you use to create the stored procedure?

- A.

```
UPDATE PROCEDURE StoreData
@UserName nvarchar(255),
@Age int
```
- B.

```
CREATE PROCEDURE StoreData
@UserName char,
@Age double
```
- C.

```
CREATE PROCEDURE StoreData
@UserName nvarchar(255),
@Age int
```
- D.

```
CREATE PROCEDURE StoreData (@UserName, @Age)
```

- A. Option A
- B. Option B
- C. Option C
- D. Option D

Answer: C

Explanation:

Example (nvarchar and int are best here):

The following example creates a stored procedure that returns information for a specific

employee by passing values for the employee's first name and last name. This procedure accepts only exact matches for the parameters passed.

```
CREATE PROCEDURE HumanResources.uspGetEmployees
```

```
@LastName nvarchar(50),
```

```
@FirstName nvarchar(50) AS
```

```
SET NOCOUNT ON;
```

```
SELECT FirstName, LastName, JobTitle, Department FROM HumanResources.vEmployeeDepartment
```

```
WHERE FirstName = @FirstName AND LastName = @LastName; GO
```

NEW QUESTION 370

- (Topic 2)

You have a SQL Server database named MyDB that uses SQL Server Authentication. Which connection string should you use to connect to MyDB?

- A. Data Source=MyDB; Integrated Security=SSPf; Initial Catalog=Sales
- B. Data Source=MyDB; Trusted_Connection=True; MultipleActiveResultSets=True; Initial Catalog=Sales
- C. Data Source=MyDB; Integrated Security=True; Initial Catalog=Sales
- D. Data Source=MyDB; UserID=username; Password=P@sswOrd; Initial Catalog=Sales

Answer: D

Explanation:

Integrated Security Integrated Security is by default set to false.

When false, User ID and Password are specified in the connection.

Incorrect:

not C: Windows Authentication (Integrated Security = true) remains the most secure way to log in to a SQL Server database.

NEW QUESTION 371

- (Topic 2)

You need to debug a Windows Service application by using breakpoints. What should you do?

- A. Write all events to an event log.
- B. Set the Windows Service status to Paused.
- C. Implement the Console.WriteLine method throughout the Windows Service.
- D. use the Attach to Process menu in Microsoft Visual Studio.

Answer: D

Explanation:

* Because a service must be run from within the context of the Services Control Manager rather than from within Visual Studio, debugging a service is not as straightforward as debugging other Visual Studio application types. To debug a service, you must start the service and then attach a debugger to the process in which it is running.

* To debug a service Install your service.

Start your service, either from Services Control Manager, Server Explorer, or from code. In Visual Studio, choose Attach to Process from the Debug menu. Etc.

NEW QUESTION 375

- (Topic 2)
Which language uses Data Definition Language (DDL) and Data Manipulation Language (DML)?

- A. Java
- B. C+ +
- C. SQL
- D. Pascal

Answer: C

Explanation:
SQL uses DDL and DML.

NEW QUESTION 377

- (Topic 2)
You have a class named Glass that inherits from a base class named Window. The Window class includes a protected method named break(). How should you call the Glass class implementation of the break() method?

- A. Glass.break()
- B. Window.break()
- C. Me.break()
- D. MyBase.break()

Answer: B

NEW QUESTION 379

HOTSPOT - (Topic 2)
You have a base class named Tree with a friend property named color and a protected property named NumberOfLeaves. In the same project, you also have a class named Person.
For each of the following statements, select Yes if the statement is true. Otherwise, select No. Each correct selection is worth one point.

Answer Area

Description of Behavior	Yes	No
Methods in the Person class can access the color property.	<input type="radio"/>	<input type="radio"/>
Methods in the Person class can access the NumberOfLeaves property.	<input type="radio"/>	<input type="radio"/>
Methods in the Tree class can access all private properties in Person.	<input type="radio"/>	<input type="radio"/>

- A. Mastered
- B. Not Mastered

Answer: A

Explanation:
Answer Area

Description of Behavior	Yes	No
Methods in the Person class can access the color property.	<input checked="" type="radio"/>	<input type="radio"/>
Methods in the Person class can access the NumberOfLeaves property.	<input type="radio"/>	<input checked="" type="radio"/>
Methods in the Tree class can access all private properties in Person.	<input type="radio"/>	<input checked="" type="radio"/>

NEW QUESTION 381

.....

Thank You for Trying Our Product

We offer two products:

1st - We have Practice Tests Software with Actual Exam Questions

2nd - Questons and Answers in PDF Format

98-361 Practice Exam Features:

- * 98-361 Questions and Answers Updated Frequently
- * 98-361 Practice Questions Verified by Expert Senior Certified Staff
- * 98-361 Most Realistic Questions that Guarantee you a Pass on Your FirstTry
- * 98-361 Practice Test Questions in Multiple Choice Formats and Updatesfor 1 Year

100% Actual & Verified — Instant Download, Please Click
[Order The 98-361 Practice Test Here](#)