

Microsoft

Exam Questions 98-349

Windows Operating System Fundamentals



NEW QUESTION 1

- (Exam Topic 1)

Which two versions of Windows 7 support the Encrypting File System (EFS) functionality? (Each correct answer presents a complete solution. Chose two.)

- A. Ultimate Edition
- B. Home Premium Edition
- C. Professional Edition
- D. Starter Edition

Answer: AC

Explanation:

EFS is not fully supported on Windows 7 Starter, Windows 7 Home Basic, and Windows 7 Home Premium.

NEW QUESTION 2

- (Exam Topic 1)

Which describes the purpose of Power Saver mode for a portable computer?

- A. To lock the computer when it is idle
- B. To prevent unauthorized programs from consuming resources
- C. To protect the display from burned-in images
- D. To shut down idle devices to conserve battery charge

Answer: D

NEW QUESTION 3

- (Exam Topic 1)

You need to configure a folder that allows everyone in your group to view and modify files. Which item in the Share With menu should you use?

- A. Specific People
- B. Nobody
- C. Homegroup (Read/Write)
- D. Homegroup (Read)

Answer: C

NEW QUESTION 4

- (Exam Topic 1)

A Windows 7 library:

- A. Organizes user files from disparate locations.
- B. Makes copies of user files in a central location.
- C. Encrypts files by using the Encrypting File System (EFS).
- D. Restores files from system backup.

Answer: A

NEW QUESTION 5

- (Exam Topic 1)

Windows hides some files by default to:

- A. Avoid accidental modification or deletion of system files.
- B. Protect the confidentiality of the contents of files.
- C. Improve access to system files.
- D. Save disk space.

Answer: A

NEW QUESTION 6

- (Exam Topic 1)

Your computer is running slower than usual.

Where should you look to find out which applications are consuming the maximum number of resources?

- A. Administrative Tools
- B. Device Manager
- C. System Tray
- D. Task Manager
- E. Network and Sharing Center

Answer: D

NEW QUESTION 7

- (Exam Topic 1)

You need to configure a mouse for a left-handed user. What should you do?

- A. Configure alternate input devices.
- B. Use Device Manager to modify settings in the Mouse Properties dialog box.
- C. Use Control Panel to modify settings in the Mouse Properties dialog box.
- D. Use the manufacturer's website to update the mouse driver.

Answer: C

NEW QUESTION 8

- (Exam Topic 1)

Which prevents you from establishing a Remote Desktop connection to a remote computer?

- A. Incorrect monitor settings in Device Manager.
- B. Incorrect screen resolution in the Display Properties dialog box.
- C. Incorrect port settings in Windows Firewall.
- D. Incorrect security settings in Internet Explorer.

Answer: C

NEW QUESTION 9

- (Exam Topic 1)

You need to migrate files and settings from a Windows XP computer to another computer that runs Windows 7. Which tool should you use?

- A. Windows Easy Transfer
- B. Windows 7 Compatibility Checker
- C. Windows Upgrade Advisor
- D. Application Compatibility Toolkit

Answer: A

NEW QUESTION 10

- (Exam Topic 1)

Which Windows feature should you use to assign a drive letter to a shared folder on the network?

- A. Public Folder Sharing
- B. Computer Management Console
- C. Advanced Sharing
- D. Map Network Drive

Answer: D

NEW QUESTION 10

- (Exam Topic 1)

You need to find out whether your computer can run a program that performs resource-intensive tasks. Which Windows feature should you use?

- A. System Configuration Utility
- B. Memory Diagnostics Tool
- C. Reliability and Performance Monitor
- D. Windows Experience Index

Answer: D

NEW QUESTION 15

- (Exam Topic 1)

You need to prevent specific users from logging on to a computer from 24:00 hours to 07:00 hours. Which Control Panel feature should you use?

- A. User Account Control
- B. Administrative Tools
- C. Clock, Language, and Region
- D. Parental Controls

Answer: D

Explanation:

Ref: <http://windows.microsoft.com/en-us/windows/control-when-children-use-computer#1TC=windows-7>

NEW QUESTION 16

- (Exam Topic 1)

Which feature allows you to change the display resolution of a computer monitor?

- A. Computer Management Console
- B. System Configuration Tool
- C. Appearance and Personalization
- D. Device Manager

Answer: C

NEW QUESTION 19

- (Exam Topic 1)

Which Windows feature should you use to protect a computer against spyware?

- A. Group Policy
- B. User Account Control
- C. Windows Defender
- D. Encrypting File System

Answer: C

NEW QUESTION 22

- (Exam Topic 1)

You attempt to print to a network printer, but you are unable to find the printer when you search for available printers. What is a reason that you might not be able to find the printer?

- A. Windows Firewall is blocking network discovery.
- B. The computer that the printer is connected to is turned off.
- C. The printer does not have the Plug and Play functionality.
- D. The printer is out of paper.

Answer: A

NEW QUESTION 25

- (Exam Topic 1)

You attempt to install Windows 7 on your personal computer. You receive an error message stating that your product key is not valid. What is causing the error?

- A. You accidentally entered the product key in lower case.
- B. Your product key does not match the version of Windows that you are installing.
- C. The product key you are trying to use has expired.
- D. You reformatted your hard disk drive before you installed Windows.

Answer: B

NEW QUESTION 30

- (Exam Topic 1)

The purpose of a Public folder is to:

- A. share files with only one person on a network.
- B. share files with everyone on a network.
- C. share files with a selected group of people on a network.
- D. back up files to a location on a network.

Answer: B

NEW QUESTION 35

- (Exam Topic 1)

Where should you view the list of services on your Windows 7 computer?

- A. From the Windows Task Manager dialog box
- B. From the Windows Registry
- C. From the System Properties dialog box
- D. From the Windows Action Center

Answer: A

NEW QUESTION 36

- (Exam Topic 1)

You want to change the default printer used by the Quick Print feature in some applications. Where should you change the Windows default printer?

- A. In the printer's Properties window
- B. In the print queue
- C. Within the Print Setup page
- D. Within the Devices and Printers user interface

Answer: D

NEW QUESTION 37

- (Exam Topic 1)

BitLocker prevents:

- A. The operating system from overwriting protected sectors on the hard disk drive.
- B. Unauthorized users from accessing the Internet.
- C. Unauthorized access to files.
- D. Programs from accessing the memory of other programs.

Answer:

C

NEW QUESTION 39

- (Exam Topic 1)

You have a document that you update regularly. To access it directly from a/an:

- A. folder.
- B. icon.
- C. library.
- D. shortcut.

Answer: D

NEW QUESTION 41

- (Exam Topic 1)

Which Windows feature allows you to request that someone else control your computer from their computer?

- A. Remote Assistance
- B. Action Center
- C. Sync Center
- D. Connect Now

Answer: A

NEW QUESTION 44

- (Exam Topic 1)

The Windows Action Center allows you to:

- A. Choose options during system startup.
- B. View alerts and take appropriate actions to keep Windows running smoothly.
- C. View and modify settings of installed programs.
- D. Manage the documents in the print queue.

Answer: B

NEW QUESTION 46

- (Exam Topic 1)

Which feature allows you to run applications hosted on network file servers or web servers?

- A. Windows Virtual PC
- B. Remote Desktop Connection
- C. Windows Installer
- D. Application Virtualization Client

Answer: D

NEW QUESTION 51

- (Exam Topic 1)

Which Windows 7 feature should you use to ensure that only administrators can install new software?

- A. Network and Sharing Center
- B. User Account Control
- C. Microsoft Management Console
- D. Ease of Access

Answer: B

NEW QUESTION 52

- (Exam Topic 1)

Where will you find information about removing computer viruses?

- A. Help and Support
- B. System Restore
- C. Disk Cleanup
- D. System Information

Answer: A

NEW QUESTION 57

- (Exam Topic 1)

You need to manage service dependencies on your Windows 7 computer. Which feature should you use?

- A. Action Center
- B. Event Viewer
- C. Task Scheduler
- D. Computer Management Console

Answer: D

NEW QUESTION 59

- (Exam Topic 1)

Which Windows feature allows you to manually control another Windows computer?

- A. Remote Control Monitor
- B. Remote Desktop Connection
- C. Remote Power Management
- D. Remote Procedure Call

Answer: B

NEW QUESTION 61

- (Exam Topic 1)

Your computer is slow to start, and file access in Windows is slow. Which Windows feature should you use to improve performance?

- A. System Restore
- B. windows Defender
- C. Disk Defragmenter
- D. Disk Format

Answer: C

NEW QUESTION 63

- (Exam Topic 2)

Which name is a default library name in Windows 7?

- A. Music
- B. Downloads
- C. Desktop
- D. Favorites

Answer: A

NEW QUESTION 68

- (Exam Topic 2)

Which two versions of Windows 7 support the Windows Anytime Upgrade functionality? (Choose two.)

- A. Professional
- B. Ultimate
- C. Enterprise
- D. Starter

Answer: AD

NEW QUESTION 72

- (Exam Topic 2)

You need to find out whether a computer is running a 32-bit or 64-bit version of the Windows operating system. What should you do?

- A. From the Start menu, type 64-bit in the Search programs and files field.
- B. From Control Panel, select System.
- C. Open Device Manager and select Processors.
- D. From the Windows Help and Support feature, type 64-bit system in the Search field.

Answer: B

NEW QUESTION 74

- (Exam Topic 2)

Which task can be accomplished by a standard user, regardless of the system security settings?

- A. Installing a program
- B. Changing an account name or type
- C. Changing their own password
- D. Adding a driver for new hardware

Answer: D

NEW QUESTION 77

- (Exam Topic 2)

This question requires that you evaluate the underlined text to determine if it is correct. Public folders are located in the My Documents directory.

Select the correct answer if the underlined text does not make the statement correct. Select "No change is needed" if the underlined text makes the statement correct.

- A. Documents Library

- B. Windows Directory
- C. Downloads Directory
- D. No change is needed
- E. User Directory

Answer: E

NEW QUESTION 81

- (Exam Topic 2)

You are an intern for Tailspin Toys and are creating a slideshow that shows pictures of certain new products that your company is working on. You are accessing the network using a Windows 7 laptop, and the pictures are located on several different network shares.

You need to be able to perform a rich content search on all of the network shares at the same time. What should you do?

- A. Enable file and printer sharing on the laptop.
- B. Copy all of the pictures to a folder on your laptop and search that folder.
- C. Add the network shares to your Pictures Library
- D. Then perform a search on your Pictures Library.
- E. Access the network shares via the Network link in Windows 7 Explore
- F. Then search each share individually.

Answer: C

NEW QUESTION 86

- (Exam Topic 2)

What are three functions of Windows 7 Upgrade Advisor? (Choose three.)

- A. Determines if your computer is capable of running Windows 7
- B. Obtains any drivers necessary to perform a Windows 7 upgrade
- C. Gives you the option to run an installation wizard
- D. Determines if there are any compatibility issues
- E. Determines which Windows 7 editions work on your computer
- F. Helps with the installation of a new Windows 7 system

Answer: ADE

NEW QUESTION 90

- (Exam Topic 2)

This question requires that you evaluate the underlined text to determine if it is correct. By default, Windows 7 allows users with any user account to install manual updates.

Select the correct answer if the underlined text does not make the statement correct. Select "No change is needed" if the underlined text makes the statement correct.

- A. administrator user accounts
- B. standard user accounts
- C. guest user accounts
- D. No change is needed.

Answer: A

NEW QUESTION 93

- (Exam Topic 2)

Which two versions of Windows 7 support the Encrypting File System (EFS) functionality? (Each correct answer presents a complete solution. Choose two.)

- A. Professional Edition
- B. Ultimate Edition
- C. Home Premium Edition
- D. Starter Edition

Answer: BD

NEW QUESTION 98

- (Exam Topic 2)

You are setting up accounts on your computer so your roommates can log on to your computer and browse the web.

You decide to use the graphical Local Users and Groups tool to configure the user account on your computer. What does the Action display when you select a user name?

- A. A history of all actions you have performed on that user
- B. All pending actions the computer will execute
- C. Buttons to record the action you take on that user
- D. Available actions based on that user

Answer: D

NEW QUESTION 100

- (Exam Topic 2)

Which Windows feature allows you to confirm that a program should run with elevated permissions?

- A. Parental Controls
- B. Group Policy
- C. Device Manager
- D. User Account Control

Answer: D

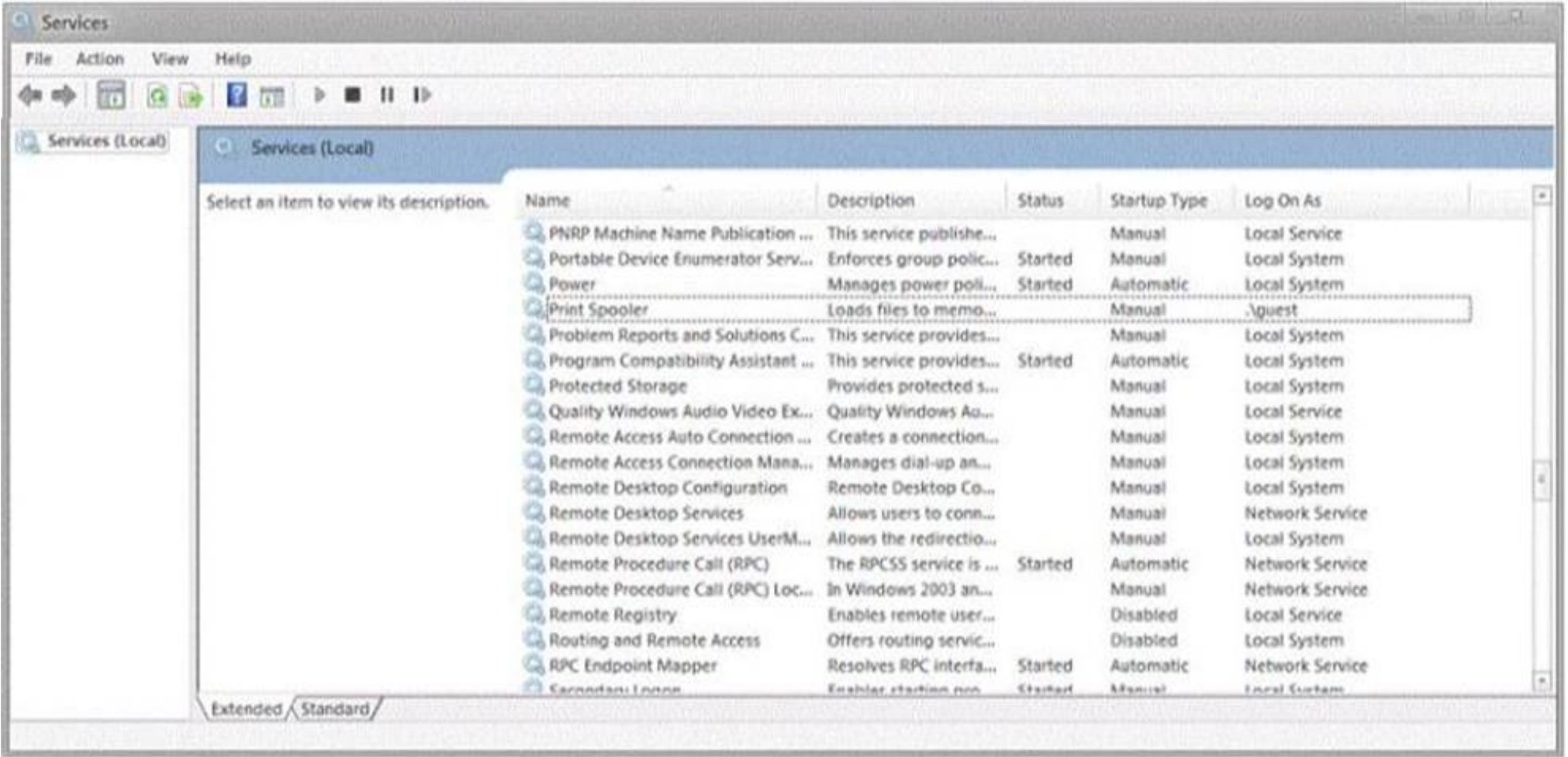
Explanation:

References:http://www.dummies.com/computers/operating-systems/windows-7/how-to-run-a-program-withelevpermissions/

NEW QUESTION 105

- (Exam Topic 2)

During your summer job at Lucerne Publishing, an employee's computer is infected by a virus, which is then removed. However, this virus made changes to a service on the computer, and now the employee is unable to print or even see networked printers. The employee's services are shown in the following image:



Use the drop-down menus to select the answer choice that completes each statement. Each correct selection is worth one point.

Answer Area

Set the Print Spooler service to a startup type of [answer choice]

Set the Print Spooler service to the [answer choice] level of privileges.

Answer Area

Set the Print Spooler service to a startup type of [answer choice]

Set the Print Spooler service to the [answer choice] level of privileges.

- A. Mastered
- B. Not Mastered

Answer: A

Explanation:

Answer Area

Set the Print Spooler service to a startup type of [answer choice]

▼

Automatic.
Manual.
Disabled.

Set the Print Spooler service to the [answer choice] level of privileges.

▼

Local System
Local Service
Network Service

NEW QUESTION 108

- (Exam Topic 2)

You need to find out the speed of the processor that your Windows 7 computer is running. What should you do?

- A. From Hardware and Sound, select Devices and Printers
- B. From System and Security, select System.
- C. From Administrative Tools, select Event Viewer.
- D. From Administrative Tools, select Services.

Answer: B

NEW QUESTION 113

- (Exam Topic 2)

Where should you configure settings to allow Workgroup users to use a printer connected to your computer?

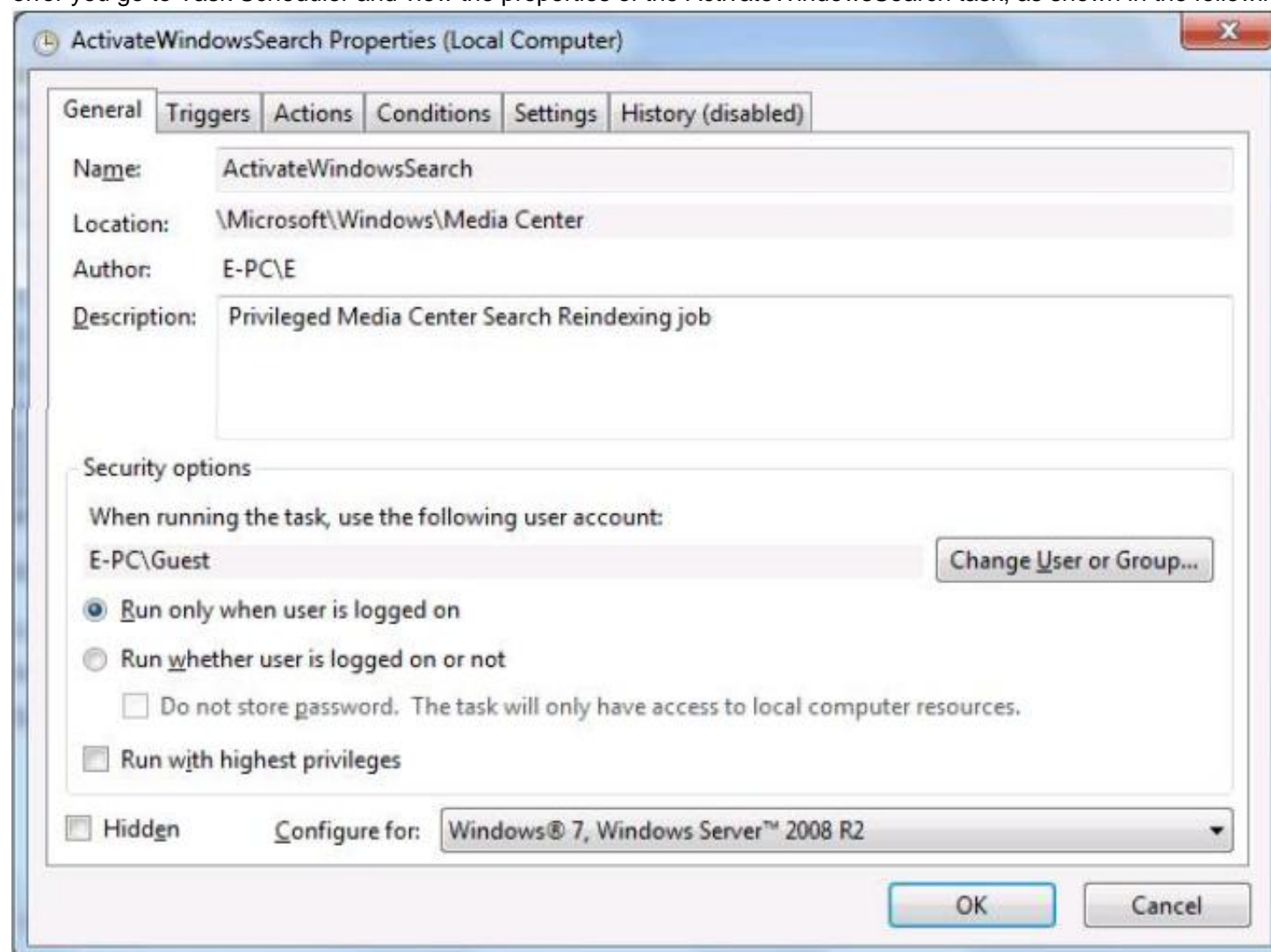
- A. In the System Configuration Utility
- B. In the Computer Management console
- C. In the Network and Sharing Center
- D. In the Local Security Policy editor

Answer: C

NEW QUESTION 116

- (Exam Topic 2)

Your roommate complains that her computer is showing an error message that says ActivateWindowsSearch scheduled task failed to run. To troubleshoot the error you go to Task Scheduler and view the properties of the ActivateWindowsSearch task, as shown in the following image:



Use the drop-down menus to select the answer choice that completes each statement. Each correct selection is worth one point.

Answer Area

To resolve the issue, the first task to complete is [answer choice]

To resolve the issue, the second task to complete is [answer choice]

Answer Area

To resolve the issue, the first task to complete is [answer choice]

 set the task to run as SYSTEM.
 set the task to run as LOCAL SERVICE.
 set the task to run as NETWORK SERVICE.

To resolve the issue, the second task to complete is [answer choice]

 set the task to run whether the user is logged on or not.
 set the task to run with highest privileges.
 set the task to "Configure" for Windows Vista.

- A. Mastered
- B. Not Mastered

Answer: A

Explanation:

Answer Area

To resolve the issue, the first task to complete is [answer choice]

 set the task to run as SYSTEM.
 set the task to run as LOCAL SERVICE.
 set the task to run as NETWORK SERVICE.

To resolve the issue, the second task to complete is [answer choice]

 set the task to run whether the user is logged on or not.
 set the task to run with highest privileges.
 set the task to "Configure" for Windows Vista.

NEW QUESTION 121

- (Exam Topic 2)

Which three methods can be used to unlock files on a BitLocker-protected drive? (Each correct answer presents a complete solution. Choose three.)

- A. Automatically unlocking by logging in as the authorized user
- B. Decompressing the files
- C. Using a Smartcard and a PIN
- D. Copying the files into another folder
- E. Unhiding the files
- F. Using a password

Answer: BCF

NEW QUESTION 122

- (Exam Topic 2)

This question requires that you evaluate the underlined text to determine if it is correct.

You can export information to a text file by using the msconfig command from a command prompt. Select the correct answer if the underlined text does not make the statement correct. Select "No change is needed" if the underlined text makes the statement correct.

- A. msinfo32
- B. perfmon
- C. taskmgr
- D. No change is needed

Answer: A

NEW QUESTION 125

- (Exam Topic 2)

Which Windows 7 edition is NOT available through retail and requires special Microsoft licensing?

- A. Windows 7 Ultimate
- B. Windows 7 Professional
- C. Windows 7 Premium
- D. Windows 7 Enterprise

Answer: D

NEW QUESTION 129

- (Exam Topic 2)

The owner of a bookstore asks you to help her set up a printer in exchange for a discount on purchases. She has three Windows 7 computers networked through a wireless router and connected through a HomeGroup. She also has a new USB printer and wants to be able to print from any of the three computers.

First, you install the printer on one of the three computers.

What should you do next to share this printer with the HomeGroup?

- A. Connect the printer directly to the network and share it with the HomeGroup.
- B. From Control Panel, select the HomeGroup featur
- C. Make sure that the Printers checkbox is enabled.
- D. Connect to the printer over TCP/IP and then share it with the HomeGroup.
- E. Configure each computer's firewall to allow port 631 because HomeGroup's printer sharing feature uses the IPP protocol.

Answer: B

NEW QUESTION 131

- (Exam Topic 2)

This question requires that you evaluate the underlined text to determine if it is correct.

FAT32 is the preferred file system for Windows 7.

Select the correct answer if the underlined text does not make the statement correct. Select "No change is needed" if the underlined text makes the statement correct.

- A. NTFS
- B. FAT16
- C. EFS
- D. No change is needed

Answer: A

NEW QUESTION 135

- (Exam Topic 2)

For each of the following statements, select Yes if the statement is true. Otherwise, select No. Each correct selection is worth one point.

Answer Area

	Yes	No
Users logged in to Windows 7 as administrators are given a standard user token in addition to their administrator token.	<input type="radio"/>	<input type="radio"/>
A standard user account is able to make changes to services or drivers that affect other users of the computer.	<input type="radio"/>	<input type="radio"/>
To make changes to how UAC operates, you must be logged in as an administrator.	<input type="radio"/>	<input type="radio"/>

- A. Mastered
- B. Not Mastered

Answer: A

Explanation:

Answer Area

	Yes	No
Users logged in to Windows 7 as administrators are given a standard user token in addition to their administrator token.	<input checked="" type="radio"/>	<input type="radio"/>
A standard user account is able to make changes to services or drivers that affect other users of the computer.	<input type="radio"/>	<input checked="" type="radio"/>
To make changes to how UAC operates, you must be logged in as an administrator.	<input checked="" type="radio"/>	<input type="radio"/>

NEW QUESTION 136

- (Exam Topic 2)

This question requires that you evaluate the underlined text to determine if it is correct.

You need to install Windows 7 on a computer using a USB drive. You need to use a ZIP to create that drive. Select the correct answer if the underlined text does not make the statement correct. Select "No change is needed" if the underlined text makes the statement correct.

- A. an iso
- B. apx
- C. azn
- D. No change is needed.

Answer: A

NEW QUESTION 137

- (Exam Topic 2)

Instructions: For each of the following statements, select Yes if the statement is true. Otherwise, select No. NOTE: Each correct selection is worth one point.

Answer Area

	Yes	No
Launch Action Center from the System Tray to troubleshoot the system problems.	<input type="radio"/>	<input type="radio"/>
Use the System option in the Control Panel System and Security area to defragment.	<input type="radio"/>	<input type="radio"/>
Use the Folder Options selection in the Control Panel Appearance and personalization area to have file extensions appear in Windows Explorer.	<input type="radio"/>	<input type="radio"/>

- A. Mastered
- B. Not Mastered

Answer: A

Explanation:

Answer Area

	Yes	No
Launch Action Center from the System Tray to troubleshoot the system problems.	<input checked="" type="radio"/>	<input type="radio"/>
Use the System option in the Control Panel System and Security area to defragment.	<input checked="" type="radio"/>	<input type="radio"/>
Use the Folder Options selection in the Control Panel Appearance and personalization area to have file extensions appear in Windows Explorer.	<input checked="" type="radio"/>	<input type="radio"/>

NEW QUESTION 142

- (Exam Topic 2)

Your aunt uses her new Windows 10 laptop to read articles. However, she finds that reading for long periods strains her eyes. You want to adjust the text on the screen to make it easier for your aunt to read for long periods without experiencing eye strain. Which option should you select?

- A. Custom Scaling
- B. Screen Resolution

- C. Clear Type
- D. Change Text Size of Menus

Answer: B

NEW QUESTION 145

- (Exam Topic 2)

This question requires that you evaluate the underlined text to determine if it is correct.

To change a file system from FAT32 to NTFS, you should run the fdisk command at the command prompt. Select the correct answer if the underlined text does not make the statement correct. Select "No change is needed" if the underlined text makes the statement correct.

- A. convert
- B. diskpart
- C. change
- D. No change is needed.

Answer: A

NEW QUESTION 148

- (Exam Topic 2)

A classmate upgraded her laptop from Windows 8.1 to Windows 10. She wants more information about customizing the Start Menu.

Instructions: For each of the following statements, select Yes if the statement is true?

NOTE: Each correct selection is worth one point.

	Yes	No
The Windows 10 Start Menu can be made larger or smaller by dragging the edges of the menu.	<input type="radio"/>	<input type="radio"/>
Pressing the Windows logo key + G creates a new group on the Windows 10 Start Menu.	<input type="radio"/>	<input type="radio"/>
Selecting a group name in the Windows 10 Start Menu allows you to change its name.	<input type="radio"/>	<input type="radio"/>

- A. Mastered
- B. Not Mastered

Answer: A

Explanation:

	Yes	No
The Windows 10 Start Menu can be made larger or smaller by dragging the edges of the menu.	<input checked="" type="radio"/>	<input type="radio"/>
Pressing the Windows logo key + G creates a new group on the Windows 10 Start Menu.	<input type="radio"/>	<input checked="" type="radio"/>
Selecting a group name in the Windows 10 Start Menu allows you to change its name.	<input type="radio"/>	<input checked="" type="radio"/>

NEW QUESTION 151

- (Exam Topic 2)

This QUESTION NO: requires that you evaluate the underlined text to determine if it is correct.

You can set Windows to automatically install updates for other Microsoft products through Windows Update. Instructions: Review the underlined text. If it makes the statement correct, select "No change is needed." If the statement is incorrect, select the answer choice that makes the statement correct.

- A. No change is needed.
- B. Critical updates only
- C. Third-party updates
- D. Optional updates only

Answer: A

NEW QUESTION 155

- (Exam Topic 2)

You are preparing to install Windows 7 on a new computer. You need to enable BitLocker for encryption. What is required in order to enable BitLocker?

- A. FAT32 system drive
- B. Smart card
- C. NTFS system drive
- D. Trusted Platform Module (TPM)

Answer: C

NEW QUESTION 160

- (Exam Topic 2)

Instructions: For each of the following statements, select Yes if the statement is true. Otherwise, select No. NOTE: Each correct selection is worth one point.

	Yes	No
The Hyper-V role can be installed on Windows 10 Home.	<input type="radio"/>	<input type="radio"/>
Hyper-V virtual machines can only run Microsoft operating systems.	<input type="radio"/>	<input type="radio"/>
A private, virtual network can be created among virtual machines.	<input type="radio"/>	<input type="radio"/>

- A. Mastered
B. Not Mastered

Answer: A

Explanation:

References: <https://docs.microsoft.com/en-us/virtualization/hyper-v-on-windows/quick-start/enable-hyper-v> <https://docs.microsoft.com/en-us/windows-server/virtualization/hyper-v/Supported-Linux-and-FreeBSD-virtual-for-Hyper-V-on-Windows>
<https://docs.microsoft.com/en-us/virtualization/hyper-v-on-windows/quick-start/connect-to-network>

NEW QUESTION 164

- (Exam Topic 2)

For each of the following statements, select Yes if the statement is true. Otherwise, select No. Each correct selection is worth one point.

Answer Area	Yes	No
Installing Windows XP Mode requires a separate license for Windows XP.	<input type="radio"/>	<input type="radio"/>
Programs from an XP Mode installation display in both the Windows 7 list of programs and the XP Mode list of programs.	<input type="radio"/>	<input type="radio"/>
Windows XP Mode is available for Windows 7 Home.	<input type="radio"/>	<input type="radio"/>

- A. Mastered
B. Not Mastered

Answer: A

Explanation:

Answer Area	Yes	No
Installing Windows XP Mode requires a separate license for Windows XP.	<input type="radio"/>	<input checked="" type="radio"/>
Programs from an XP Mode installation display in both the Windows 7 list of programs and the XP Mode list of programs.	<input checked="" type="radio"/>	<input type="radio"/>
Windows XP Mode is available for Windows 7 Home.	<input type="radio"/>	<input checked="" type="radio"/>

NEW QUESTION 167

- (Exam Topic 2)

Which two system requirements allow Windows 7 to take advantage of 64-bit processing? (Choose two.)

- A. A minimum of 2 GB of RAM
B. A minimum of 4 GB of RAM
C. A minimum of 16 GB of available hard disk space
D. A minimum of 20 GB of available hard disk space

Answer: AD

NEW QUESTION 169

- (Exam Topic 2)

For each of the following statements, select Yes if the statement is true. Otherwise, select No. Each correct selection is worth one point.

Answer Area

	Yes	No
Restore deleted data files by using the System Restore Wizard.	<input type="radio"/>	<input type="radio"/>
Restore registry settings by using the System Restore Wizard.	<input type="radio"/>	<input type="radio"/>
Restore data files from a system image backup.	<input type="radio"/>	<input type="radio"/>

- A. Mastered
- B. Not Mastered

Answer: A

Explanation:

Answer Area

	Yes	No
Restore deleted data files by using the System Restore Wizard.	<input type="radio"/>	<input checked="" type="radio"/>
Restore registry settings by using the System Restore Wizard.	<input checked="" type="radio"/>	<input type="radio"/>
Restore data files from a system image backup.	<input checked="" type="radio"/>	<input type="radio"/>

NEW QUESTION 170

- (Exam Topic 2)

Your computer starts slowly, and Windows accesses files slowly.

Which two Windows features should you use to improve performance? (Choose two.)

- A. Disk Defragmenter
- B. Disk Format
- C. System Restore
- D. Disk Cleanup

Answer: AD

NEW QUESTION 174

- (Exam Topic 2)

For each of the following statements, select Yes if the statement is true. Otherwise, select No. Each correct selection is worth one point.

Answer Area

	Yes	No
Installing Windows XP Mode requires a separate license for Windows XP.	<input type="radio"/>	<input type="radio"/>
Programs from an XP Mode installation display in both the Windows 7 list of programs and the XP Mode list of programs.	<input type="radio"/>	<input type="radio"/>
Windows XP Mode is available for Windows 7 Home.	<input type="radio"/>	<input type="radio"/>

- A. Mastered
- B. Not Mastered

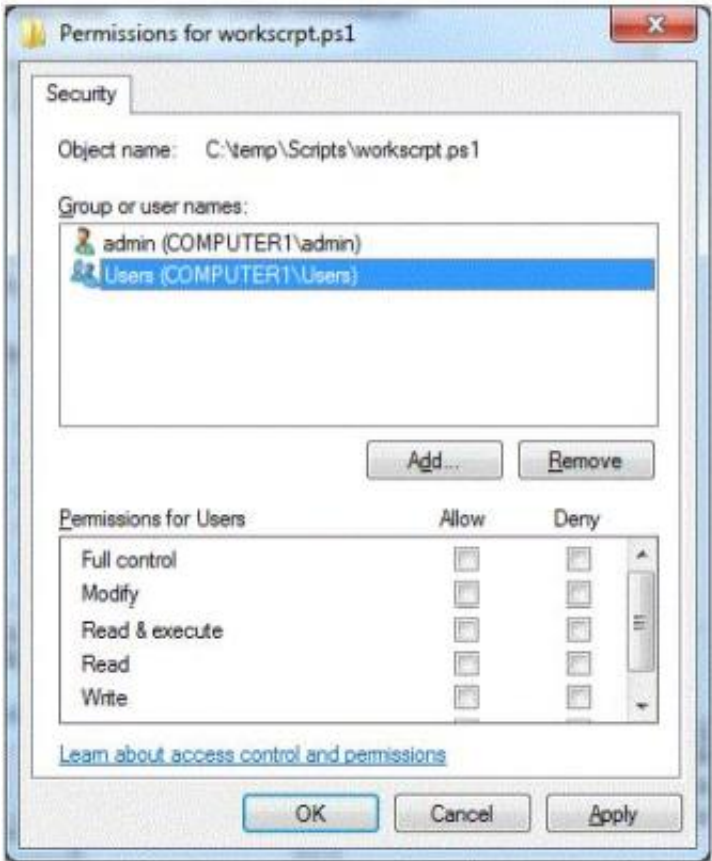
Answer: A

Explanation:
Answer Area

	Yes	No
Installing Windows XP Mode requires a separate license for Windows XP.	<input type="radio"/>	<input checked="" type="radio"/>
Programs from an XP Mode installation display in both the Windows 7 list of programs and the XP Mode list of programs.	<input checked="" type="radio"/>	<input type="radio"/>
Windows XP Mode is available for Windows 7 Home.	<input type="radio"/>	<input checked="" type="radio"/>

NEW QUESTION 179

- (Exam Topic 2)
You have a file on your Windows 7 workstation located at c:\temp\Scripts\. The file name is workscrtps1. You need to allow all users who log in to the workstation the ability to run the script and make changes to it.
You do not want the users to delete the file shown in the following image:



Use the drop-down menus to select the answer choice that completes each statement. Each correct selection is worth one point.

Answer Area

In order for all users to make changes without deleting the file, the [answer choice] permission is required.	<div></div>
In order for all users to run the script, the [answer choice] permission is required.	<div></div>

Answer Area

In order for all users to make changes without deleting the file, the [answer choice] permission is required.	<div>Modify Read Write</div>
In order for all users to run the script, the [answer choice] permission is required.	<div>Write Full Control Read and execute</div>

- A. Mastered
- B. Not Mastered

Answer: A

Explanation:

In order for all users to make changes without deleting the file, the [answer choice] permission is required.

Modify

In order for all users to run the script, the [answer choice] permission is required.

Read and execute

NEW QUESTION 181

- (Exam Topic 2)

You have a Windows 7 Enterprise workstation that is used by multiple users. You need to allow each of them to encrypt their own files on this workstation. Which tool should you use?

A. EFS

B. BitLocker

C. ZIP

D. Convert

Answer: A

NEW QUESTION 185

.....

Thank You for Trying Our Product

We offer two products:

1st - We have Practice Tests Software with Actual Exam Questions

2nd - Questions and Answers in PDF Format

98-349 Practice Exam Features:

- * 98-349 Questions and Answers Updated Frequently
- * 98-349 Practice Questions Verified by Expert Senior Certified Staff
- * 98-349 Most Realistic Questions that Guarantee you a Pass on Your First Try
- * 98-349 Practice Test Questions in Multiple Choice Formats and Updates for 1 Year

100% Actual & Verified — Instant Download, Please Click
[Order The 98-349 Practice Test Here](#)