

Exam Questions 98-367

MTA Security Fundamentals Practice Test

<https://www.2passeasy.com/dumps/98-367/>



NEW QUESTION 1

Passwords that contain recognizable words are vulnerable to a:

- A. Denial of Service attack
- B. Hashing attack
- C. Dictionary attack
- D. Replay attack

Answer: C

Explanation: A dictionary attack is a method of breaking into a password-protected computer or server by systematically entering every word in a dictionary as a password. A dictionary attack can also be used in an attempt to find the key necessary to decrypt an encrypted message or document.

Dictionary attacks work because many computer users and businesses insist on using ordinary words as passwords. Dictionary attacks are rarely successful against systems that employ multiple-word phrases, and unsuccessful against systems that employ random combinations of uppercase and lowercase letters mixed up with numerals.

Reference: <http://searchsecurity.techtarget.com/definition/dictionary-attack>

NEW QUESTION 2

Your company requires that users type a series of characters to access the wireless network.

The series of characters must meet the following requirements:

- ? Contains more than 15 characters
- ? Contains at least one letter
- ? Contains at least one number
- ? Contains at least one symbol

Which security technology meets these requirements?

- A. WEP
- B. WPA2 PSK
- C. WPA2 Enterprise
- D. MAC filtering

Answer: B

Explanation: Pre-shared key mode (PSK, also known as Personal mode) is designed for home and small office networks that don't require the complexity of an 802.1X authentication server.[9] Each wireless network device encrypts the network traffic using a 256 bit key. This key may be entered either as a string of 64 hexadecimal digits, or as a passphrase of 8 to 63 printable ASCII characters

NEW QUESTION 3

You are an intern at Wide World Importers and help manage 1000 workstations. All the workstations are members of an Active Domain.

You need to push out an internal certificate to Internet Explorer on all workstations. What is the quickest method to do this?

- A. Local policy
- B. Logon script
- C. Windows Update
- D. Group policy

Answer: A

NEW QUESTION 4

The Active Directory controls, enforces, and assigns security policies and access rights for all users.

Select the correct answer if the underlined text does not make the statement correct. Select "No change is needed" if the underlined text makes the statement correct.

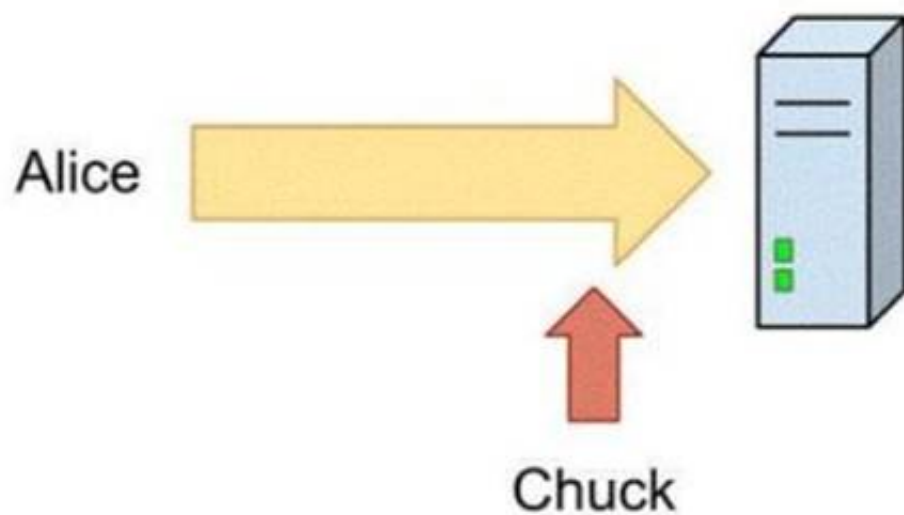
- A. NTFS permissions
- B. User Account Control
- C. Registry
- D. No change is needed

Answer: D

NEW QUESTION 5

HOTSPOT

Alice sends her password to the game server in plaintext. Chuck is able to observe her password as shown in the following image:



Use the drop-down menus to select the answer choice that completes each statement.
 Each correct selection is worth one point.

Answer Area

The scenario demonstrated is a(n) attack.

Alice should to avoid this type of attack.

Answer Area

The scenario demonstrated is a(n) attack.

man in the middle
 eavesdropping
 denial of service

Alice should to avoid this type of attack.

never send a plaintext password
 only send passwords in plaintext to well-known companies
 only send passwords in plaintext over the local network

Answer:

Explanation: Answer Area

The scenario demonstrated is a(n) attack.

man in the middle
 eavesdropping
 denial of service

Alice should to avoid this type of attack.

never send a plaintext password
 only send passwords in plaintext to well-known companies
 only send passwords in plaintext over the local network

NEW QUESTION 6

HOTSPOT

For each of the following statements, select Yes if the statement is true. Otherwise, select No. Each correct selection is worth one point.

Answer Area

	Yes	No
Honey pots are primarily used to attract potential attackers or hackers.	<input type="radio"/>	<input type="radio"/>
By setting up a honey pot, an administrator can get insightful information about the attacker, such as the IP address.	<input type="radio"/>	<input type="radio"/>
A honey pot is an appliance or piece of software that allows or denies network access based on a preconfigured set of rules.	<input type="radio"/>	<input type="radio"/>

Answer:

Explanation: Answer Area

	Yes	No
Honey pots are primarily used to attract potential attackers or hackers.	<input checked="" type="radio"/>	<input type="radio"/>
By setting up a honey pot, an administrator can get insightful information about the attacker, such as the IP address.	<input checked="" type="radio"/>	<input type="radio"/>
A honey pot is an appliance or piece of software that allows or denies network access based on a preconfigured set of rules.	<input type="radio"/>	<input checked="" type="radio"/>

NEW QUESTION 7

Dumpster diving refers to a physical threat that a hacker might use to look for information about a computer network. Select the correct answer if the underlined text does not make the statement correct. Select "No change is needed" if the underlined text makes the statement correct.

- A. Phishing
- B. Malware
- C. Reverse Social engineering
- D. No change is needed

Answer: D

NEW QUESTION 8

HOTSPOT

For each of the following statements, select Yes if the statement is true. Otherwise, select No. Each correct selection is worth one point.

Answer Area

	Yes	No
BitLocker to Go Reader allows you to encrypt drives.	<input type="radio"/>	<input type="radio"/>
BitLocker to Go Reader requires drives that are encrypted using a password.	<input type="radio"/>	<input type="radio"/>
BitLocker to Go works on Windows Vista and Windows XP.	<input type="radio"/>	<input type="radio"/>

Answer:

Explanation: Answer Area

	Yes	No
BitLocker to Go Reader allows you to encrypt drives.	<input type="radio"/>	<input checked="" type="radio"/>
BitLocker to Go Reader requires drives that are encrypted using a password.	<input checked="" type="radio"/>	<input type="radio"/>
BitLocker to Go works on Windows Vista and Windows XP.	<input checked="" type="radio"/>	<input type="radio"/>

NEW QUESTION 9

You want to make your computer resistant to online hackers and malicious software. What should you do?

- A. Configure a forward proxy.
- B. Install anti-virus software.
- C. Enable spam filtering.
- D. Turn on Windows Firewall.

Answer: B

NEW QUESTION 10

What is the standard or basic collection of NTFS permissions?

- A. Read and execute, read, write, full control, modify, list folder contents
- B. Change permissions, read permissions, write permissions
- C. Read attributes, list folder/read data, traverse folder/execute file
- D. Create files/write data, create folders/append data, take ownership

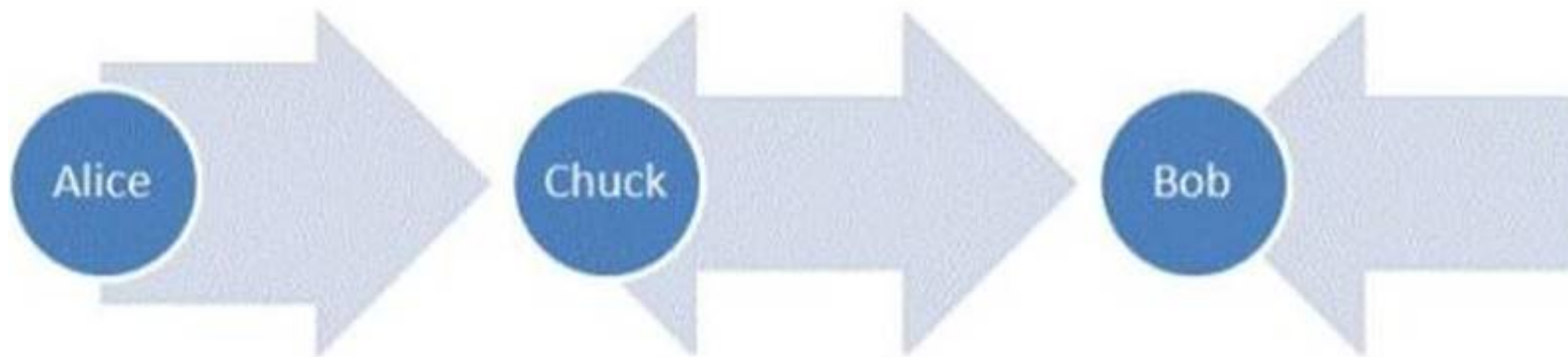
Answer: A

Explanation: Reference: <http://technet.microsoft.com/en-us/library/bb727008.aspx>

NEW QUESTION 10

HOTSPOT

Alice and Bob are exchanging messages with each other. Chuck modifies the messages sent between Alice and Bob as shown in the following image:



Use the drop-down menus to select the answer choice that completes each statement. Each correct selection is worth one point.

Answer Area

The scenario demonstrated is a [answer choice] attack.

Alice and Bob could add a [answer choice] to avoid this type of attack.

Answer Area

The scenario demonstrated is a [answer choice] attack.

Alice and Bob could add a [answer choice] to avoid this type of attack.

Answer:

Explanation: **Answer Area**

The scenario demonstrated is a [answer choice] attack.

Alice and Bob could add a [answer choice] to avoid this type of attack.

NEW QUESTION 13

The company that you work for wants to set up a secure network, but they do not have any servers. Which three security methods require the use of a server? (Choose three.)

- A. 802.1x
- B. WPA2 Personal
- C. WPA2 Enterprise
- D. RADIUS
- E. 802.11ac

Answer: ACD

NEW QUESTION 17

E-mail spoofing:

- A. Forwards e-mail messages to all contacts
- B. Copies e-mail messages sent from a specific user
- C. Obscures the true e-mail sender
- D. Modifies e-mail routing logs

Answer: C

Explanation: Reference: <http://www.microsoft.com/mscorp/safety/technologies/senderid/technology.msp>x

NEW QUESTION 18

You are an intern at Litware, Inc. Your manager asks you to make password guess attempts harder by limiting login attempts on company computers. What should you do?

- A. Enforce password sniffing.
- B. Enforce password history.
- C. Make password complexity requirements higher.
- D. Implement account lockout policy.

Answer: D

Explanation: Reference: <http://technet.microsoft.com/en-us/library/dd277400.aspx>

NEW QUESTION 21

What are three major attack vectors that a social engineering hacker may use? (Choose three.)

- A. Telephone
- B. Reverse social engineering
- C. Waste management
- D. Honey pot systems
- E. Firewall interface

Answer: ABC

NEW QUESTION 26

Which of the following describes a VLAN?

- A. It connects multiple networks and routes data packets.
- B. It is a logical broadcast domain across physical subnets.
- C. It is a subnetwork that reveals a company's externally facing resources to the public network.
- D. It allows different network protocols to communicate between different network segments.

Answer: B

Explanation: VLAN (Virtual Local Network) is a logically separate IP subnetwork which allow multiple IP networks and subnets to exist on the same-switched network.

VLAN is a logical broadcast domain that can span multiple physical LAN segments. It is a modern way administrators configure switches into virtual local-area networks (VLANs) to improve network performance by separating large Layer 2 broadcast domains into smaller ones.

NEW QUESTION 27

Which enables you to change the permissions on a folder?

- A. Take ownership
- B. Extended attributes
- C. Auditing
- D. Modify

Answer: D

NEW QUESTION 28

Which password attack uses all possible alpha numeric combinations?

- A. Social engineering
- B. Brute force attack
- C. Dictionary attack
- D. Rainbow table attack

Answer: C

NEW QUESTION 31

The Windows Firewall protects computers from unauthorized network connections.

Select the correct answer if the underlined text does not make the statement correct. Select "No change is needed" if the underlined text makes the statement correct.

- A. Email viruses
- B. Phishing scams
- C. Unencrypted network access
- D. No change is needed

Answer: D

NEW QUESTION 35

Which enables access to all of the logged-in user's capabilities on a computer?

- A. Java applets
- B. ActiveX controls
- C. Active Server Pages (ASP)
- D. Microsoft Silverlight

Answer: B

NEW QUESTION 37

You suspect a user's computer is infected by a virus. What should you do first?

- A. Restart the computer in safe mode
- B. Replace the computer's hard disk drive
- C. Disconnect the computer from the network
- D. Install antivirus software on the computer

Answer: D

NEW QUESTION 38

Which technology enables you to filter communications between a program and the Internet?

- A. RADIUS server
- B. Antivirus software
- C. Software firewall
- D. BitLocker To Go

Answer: C

Explanation: There are two types of firewalls the Hardware Firewall and the Software Firewall. A Software Firewall is a software program and a Hardware Firewall is a piece of hardware. Both have the same objective of filtering communications over a system.

NEW QUESTION 41

What is a common method for password collection?

- A. Email attachments
- B. Back door intrusions
- C. SQL Injection
- D. Network sniffers

Answer: D

NEW QUESTION 44

HOTSPOT

For each of the following statements, select Yes if the statement is true. Otherwise, select No. Each correct selection is worth one point.

Answer Area

	Yes	No
Tools like Microsoft Security Compliance Manager and Microsoft Baseline Security Analyzer can assist with server hardening.	<input type="radio"/>	<input type="radio"/>
Administrator passwords may contain ASCII characters generated by a combination of the ALT key and three digits on the numeric keypad.	<input type="radio"/>	<input type="radio"/>
The removal of unused registry entries and executables increases the surface vulnerability of the server.	<input type="radio"/>	<input type="radio"/>

Answer:

Explanation:

Answer Area

	Yes	No
Tools like Microsoft Security Compliance Manager and Microsoft Baseline Security Analyzer can assist with server hardening.	<input checked="" type="radio"/>	<input type="radio"/>
Administrator passwords may contain ASCII characters generated by a combination of the ALT key and three digits on the numeric keypad.	<input checked="" type="radio"/>	<input type="radio"/>
The removal of unused registry entries and executables increases the surface vulnerability of the server.	<input type="radio"/>	<input checked="" type="radio"/>

NEW QUESTION 49

The primary method of authentication in an SSL connection is passwords.

To answer, choose the option "No change is needed" if the underlined text is correct. If the underlined text is not correct, choose the correct answer.

- A. No change is needed
- B. Certificates
- C. IPsec
- D. Biometrics

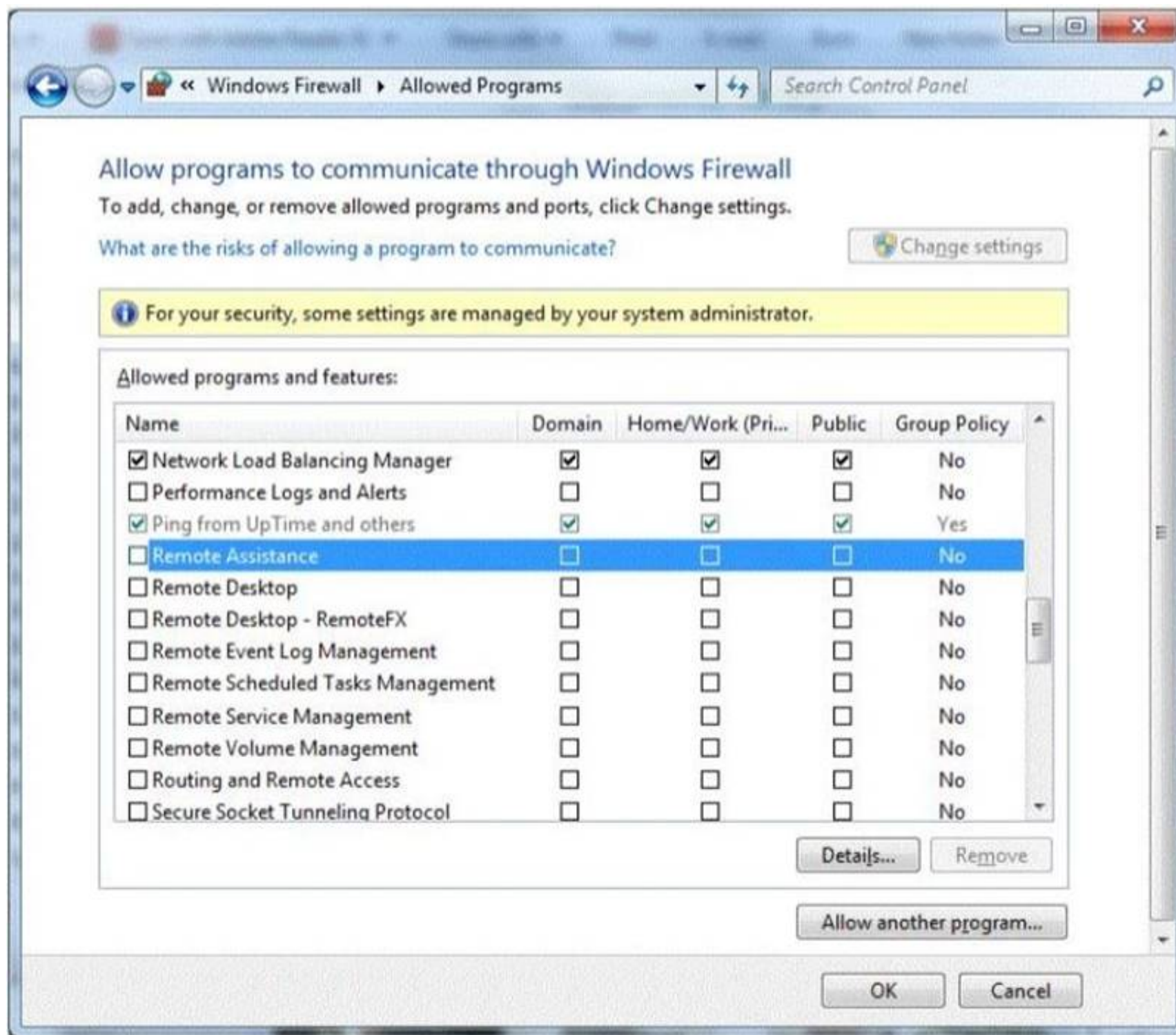
Answer: B

Explanation: Reference: https://www.geocerts.com/ssl/understanding_authentication

NEW QUESTION 51

You are setting up Remote Desktop on your computer. Your computer is a member of a domain.

Your firewall configuration is shown in the following image:



You need to allow Remote Desktop to be able to get through your firewall for users on your company's network. Which settings should you enable?

- A. Remote Assistance: Home/Work (Private)
- B. Remote Desktop: Public
- C. Remote Desktop: Home/Work (Private)
- D. Remote Assistance: Domain

Answer: A

NEW QUESTION 53

HOTSPOT

For each of the following statements, select Yes if the statement is true. Otherwise, select No. Each correct selection is worth one point.

Answer Area

	Yes	No
FAT32 has built-in security features that control user access.	<input type="radio"/>	<input type="radio"/>
NFTS has built-in security features that control file access.	<input type="radio"/>	<input type="radio"/>
All users on the same FAT32 file system have access rights to all files.	<input type="radio"/>	<input type="radio"/>

Answer:

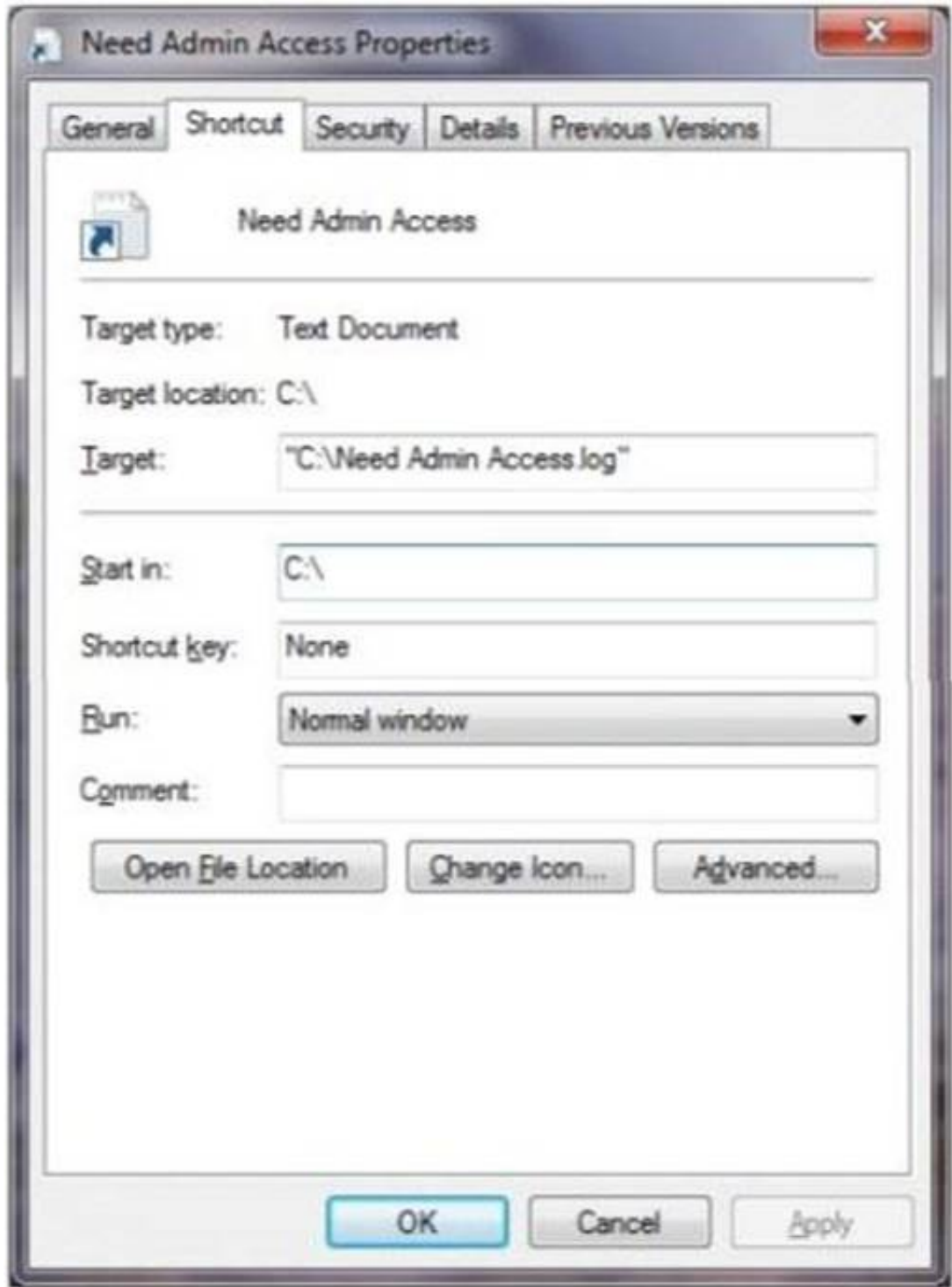
Explanation: Answer Area

	Yes	No
FAT32 has built-in security features that control user access.	<input type="radio"/>	<input checked="" type="radio"/>
NFTS has built-in security features that control file access.	<input checked="" type="radio"/>	<input type="radio"/>
All users on the same FAT32 file system have access rights to all files.	<input checked="" type="radio"/>	<input type="radio"/>

NEW QUESTION 58

HOTSPOT

You are at school and logged in to a Windows 7 computer using a standard user account. You need to change some of the properties of a desktop icon for an assignment. Your instructor provides you with an administrator username and password and asks you to do two tasks. When you open the Need Admin Access Properties window, you see the following image:



Use the drop-down menus to select the answer choice that completes each statement. Each correct selection is worth one point.

Answer Area

To allow this log file to be opened as an administrator, you should [answer choice]

To allow this log file to be opened in a maximized window, you should [answer choice]

Answer Area

To allow this log file to be opened as an administrator, you should [answer choice]

click Advanced and choose "run as administrator."
 click Run and choose "run as administer."
 click the Security tab and give admin rights to your standard account.

To allow this log file to be opened in a maximized window, you should [answer choice]

click Run and choose "maximized window."
 click the General tab and click "change to open the document as a maximized window."
 click Change Icon to choose "run as a maximized window."

Answer:

Explanation: Answer Area

To allow this log file to be opened as an administrator, you should [answer choice]

click Advanced and choose "run as administrator."
 click Run and choose "run as administer."
 click the Security tab and give admin rights to your standard account.

To allow this log file to be opened in a maximized window, you should [answer choice]

click Run and choose "maximized window."
 click the General tab and click "change to open the document as a maximized window."
 click Change Icon to choose "run as a maximized window."

NEW QUESTION 59

Which is a special folder permission?

- A. Read
- B. Modify
- C. Write
- D. Delete

Answer: D

Explanation: Reference: <http://support.microsoft.com/kb/308419>

NEW QUESTION 61

Where should you lock up the backup tapes for your servers?

- A. The server room
- B. A filing cabinet
- C. The tape library
- D. An offsite fire safe

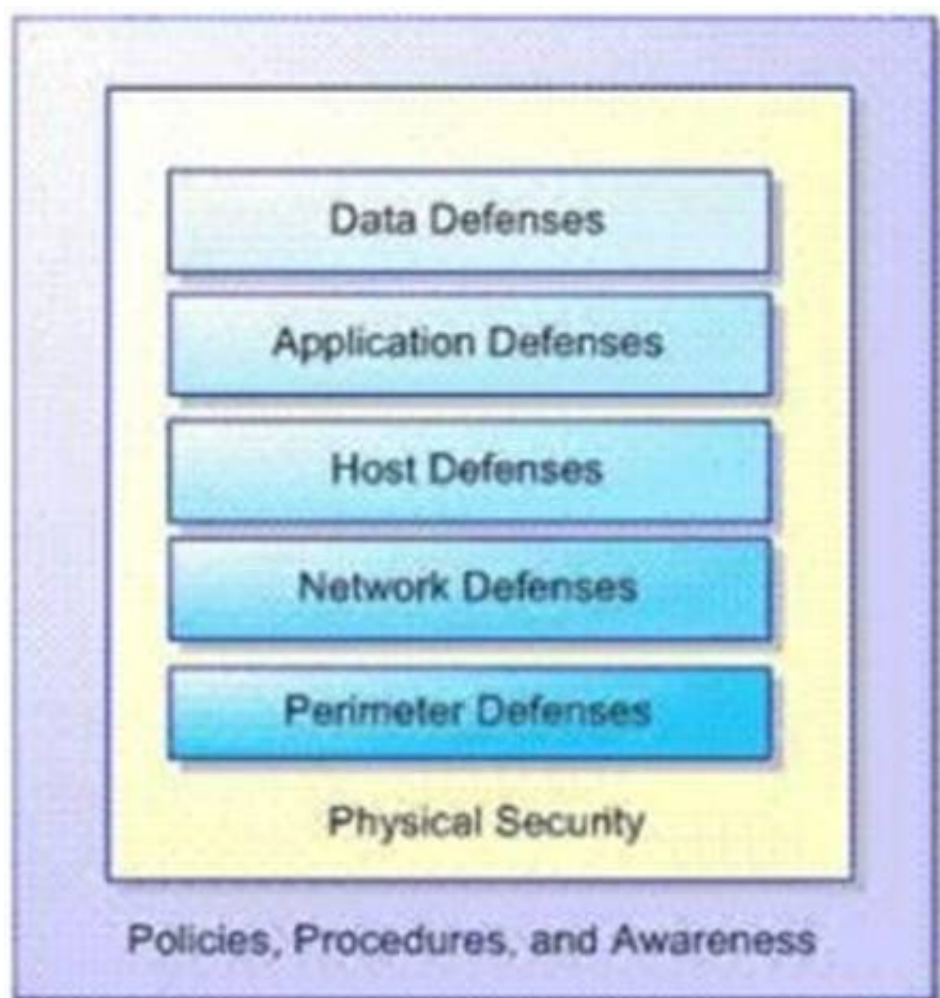
Answer: D

Explanation: Backup tapes should be stored off site, preferably in a fire safe, so that the data is available should a fire, flood, or other disaster affect the location where the servers are.

NEW QUESTION 66

HOTSPOT

You are an intern for a company where your manager wants to be sure you understand the social engineering threats that may occur. Your manager emphasizes the principles of the Microsoft Defense-in-Depth Security Model shown in the following image:



Use the drop-down menus to select the answer choice that completes each statement. Each correct selection is worth one point.

Answer Area

The **[answer choice]** defense targets staff within an organization, explaining what to do, when, why, and by whom.

The overarching defense of the Microsoft Defense-in-Depth Security Model is **[answer choice]**

Answer Area

The **[answer choice]** defense targets staff within an organization, explaining what to do, when, why, and by whom.

Policies, Procedures, and Awareness
 Data Defenses
 Physical Security

The overarching defense of the Microsoft Defense-in-Depth Security Model is **[answer choice]**

Policies, Procedures, and Awareness.
 Network Defenses.
 Data Defenses.

Answer:

Explanation:

Answer Area

The **[answer choice]** defense targets staff within an organization, explaining what to do, when, why, and by whom.

Policies, Procedures, and Awareness
Data Defenses
Physical Security

The overarching defense of the Microsoft Defense-in-Depth Security Model is **[answer choice]**

Policies, Procedures, and Awareness.
Network Defenses.
Data Defenses.

NEW QUESTION 67

Phishing is an attempt to:

- A. Obtain information by posing as a trustworthy entity.
- B. Limit access to e-mail systems by authorized users.
- C. Steal data through the use of network intrusion.
- D. Corrupt e-mail databases through the use of viruses.

Answer: A

Explanation: Phishing is the act of attempting to acquire sensitive information such as usernames, passwords, and credit card details (and sometimes, indirectly, money) by masquerading as a trustworthy entity in an electronic communication.

NEW QUESTION 70

Windows Firewall is a built-in, host-based, stateless firewall.

Select the correct answer if the underlined text does not make the statement correct. Select "No change is needed" if the underlined text makes the statement correct.

- A. Stateful
- B. Network layer
- C. Packet filter
- D. No change is needed

Answer: A

NEW QUESTION 74

Shredding documents helps prevent:

- A. Man-in-the-middle attacks
- B. Social engineering
- C. File corruption
- D. Remote code execution
- E. Social networking

Answer: B

Explanation: Reference: <http://technet.microsoft.com/en-us/library/cc875841.aspx>

NEW QUESTION 76

Before you deploy Network Access Protection (NAP), you must install:

- A. Internet Information Server (IIS)
- B. Network Policy Server (NPS)
- C. Active Directory Federation Services
- D. Windows Update Service

Answer: B

Explanation: Reference: <http://technet.microsoft.com/en-us/library/bb681008.aspx>

NEW QUESTION 78

A user who receives a large number of emails selling prescription medicine is probably receiving pharming mail.

Select the correct answer if the underlined text does not make the statement correct. Select "No change is needed" if the underlined text makes the statement correct.

- A. Malware
- B. Spoofed mail
- C. Spam
- D. No change is needed.

Answer: C

NEW QUESTION 81

A network sniffer is software or hardware that:

- A. Records user activity and transmits it to the server
- B. Captures and analyzes network communication
- C. Protects workstations from intrusions
- D. Catalogs network data to create a secure index

Answer: B

Explanation: A network sniffer is a computer tool that captures network data in the form of low-level packets. Network sniffers can be used for technical troubleshooting and analyzing the communication.

NEW QUESTION 82

You have two servers that run Windows Server. All drives on both servers are formatted by using NTFS. You move a file from one server to the other server. The file's permissions in the new location will:

- A. Enable full access to the everyone group
- B. Restrict access to the Administrators group
- C. Inherit the destination folder's permissions
- D. Retain the original folder's permissions

Answer: C

Explanation: You can modify how Windows Explorer handles permissions when objects are copied or moved to another NTFS volume. When you copy or move an object to another volume, the object inherits the permissions of its new folder.

NEW QUESTION 83

What is a service set identifier (SSID)?

- A. A wireless encryption standard
- B. The wireless LAN transmission type
- C. The broadcast name of an access point
- D. A wireless security protocol

Answer: C

Explanation: SSID (service set identifier) is a function performed by an Access Point that transmits its name so that wireless stations searching for a network connection can 'discover' it. It's what allows your wireless adapter's client manager program or Windows built-in wireless software to give you a list of the Access Points in range.

NEW QUESTION 86

An attorney hires you to increase the wireless network security for the law firm's office. The office has a very basic network, with just a modem and a router. Which of these security modes offers the highest security?

- A. WPA-Personal
- B. WEP
- C. WPA2-Personal
- D. WPA-Enterprise

Answer: C

NEW QUESTION 90

HOTSPOT

For each of the following statements, select Yes if the statement is true. Otherwise, select No. Each correct selection is worth one point.

Answer Area

	Yes	No
Biometrics are used to authenticate users.	<input type="radio"/>	<input type="radio"/>
Biometric data is usually encrypted when it is gathered.	<input type="radio"/>	<input type="radio"/>
An example of a biometric device is a fingerprint scanner.	<input type="radio"/>	<input type="radio"/>

Answer:

Explanation: Answer Area

	Yes	No
Biometrics are used to authenticate users.	<input checked="" type="radio"/>	<input type="radio"/>
Biometric data is usually encrypted when it is gathered.	<input checked="" type="radio"/>	<input type="radio"/>
An example of a biometric device is a fingerprint scanner.	<input checked="" type="radio"/>	<input type="radio"/>

NEW QUESTION 93
The default password length for a Windows Server domain controller is:

A. 5
B. 7
C. 14

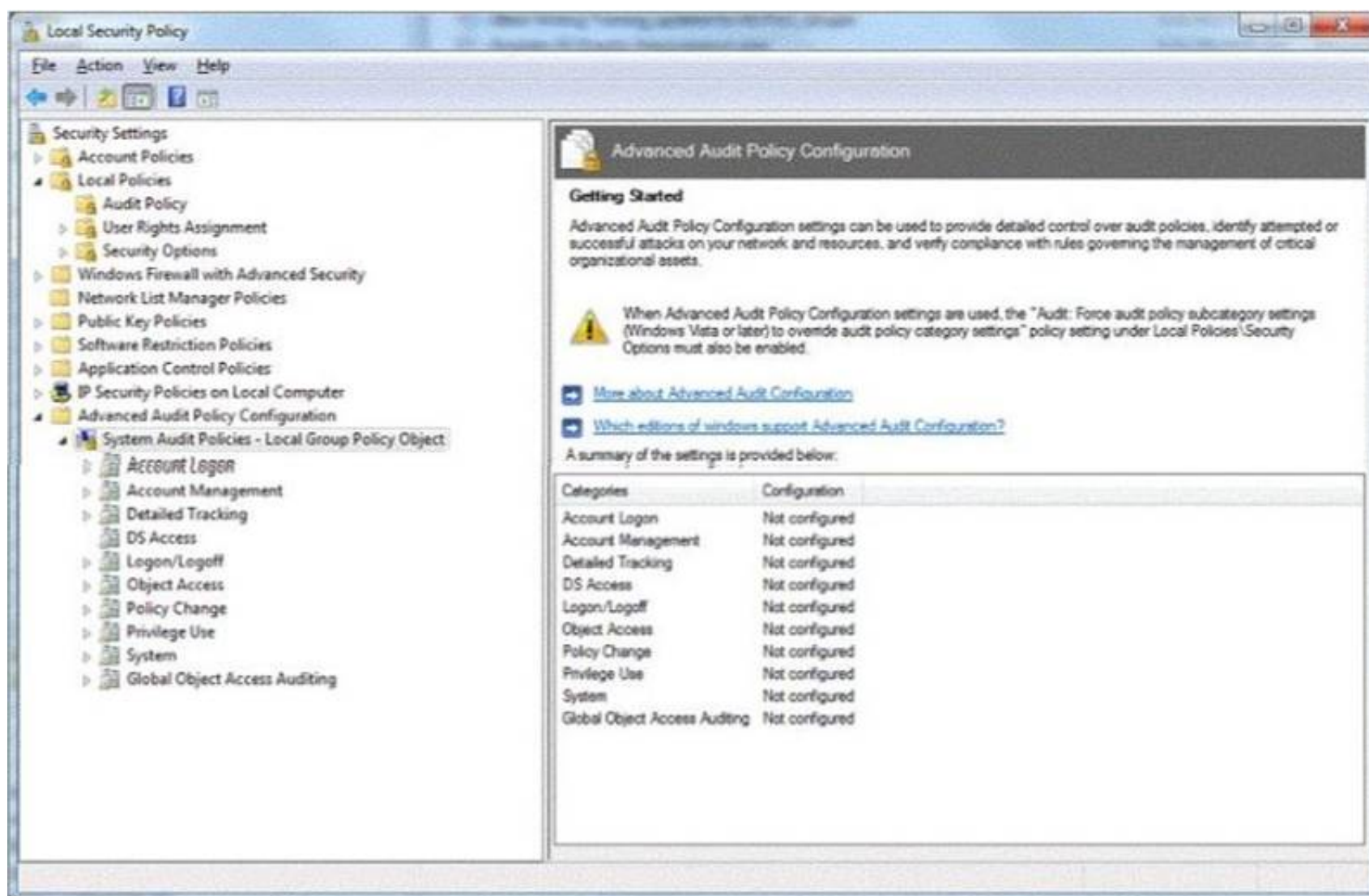
Answer: C

NEW QUESTION 97
You are trying to connect to an FTP server on the Internet from a computer in a school lab. You cannot get a connection. You try on another computer with the same results. The computers in the lab are able to browse the Internet. You are able to connect to this FTP server from home. What could be blocking the connection to the server?

- A. A layer-2 switch
B. A wireless access point
C. A firewall
D. A layer-2 hub

Answer: C

NEW QUESTION 101
HOTSPOT
You are preparing an audit policy for the workstations at Contoso, Ltd. Currently, no advanced auditing is enabled. The workstations are not members of the domain. The settings of your Advanced Audit Policy Configuration are shown in the following image:



Use the drop-down menus to select the answer choice that completes each statement. Each correct selection is worth one point.

Answer Area

To enable auditing of all local login events, you need to turn on the [answer choice] Advanced Audit Policy.

You need to know when someone accesses files in the c:\temp directory. Auditing is turned on for this directory. You need to enable the [answer choice] Advanced Audit Policy to log these events.

Answer Area

To enable auditing of all local login events, you need to turn on the [answer choice] Advanced Audit Policy.

Logon/Logoff
Account Logon
System

You need to know when someone accesses files in the c:\temp directory. Auditing is turned on for this directory. You need to enable the [answer choice] Advanced Audit Policy to log these events.

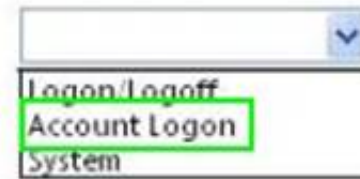
Object Access
Privilege Use
System

Answer:

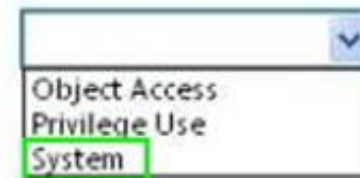
Explanation:

Answer Area

To enable auditing of all local login events, you need to turn on the **[answer choice]** Advanced Audit Policy.



You need to know when someone accesses files in the c:\temp directory. Auditing is turned on for this directory. You need to enable the **[answer choice]** Advanced Audit Policy to log these events.



NEW QUESTION 102

To prevent users from copying data to removable media, you should:

- A. Lock the computer cases
- B. Apply a group policy
- C. Disable copy and paste
- D. Store media in a locked room

Answer: B

Explanation: Reference: <http://blogs.technet.com/b/askds/archive/2008/08/25/removable-storage-group-policy-and-windows-server-2008-and-windows-vista.aspx>

NEW QUESTION 103

You need to limit the programs that can run on client computers to a specific list. Which technology should you implement?

- A. Windows Security Center
- B. Security Accounts Manager
- C. System Configuration Utility
- D. AppLocker group policies

Answer: A

NEW QUESTION 104

Which two security settings can be controlled by using group policy? (Choose two.)

- A. Password complexity
- B. Access to the Run... command
- C. Automatic file locking
- D. Encrypted access from a smart phone

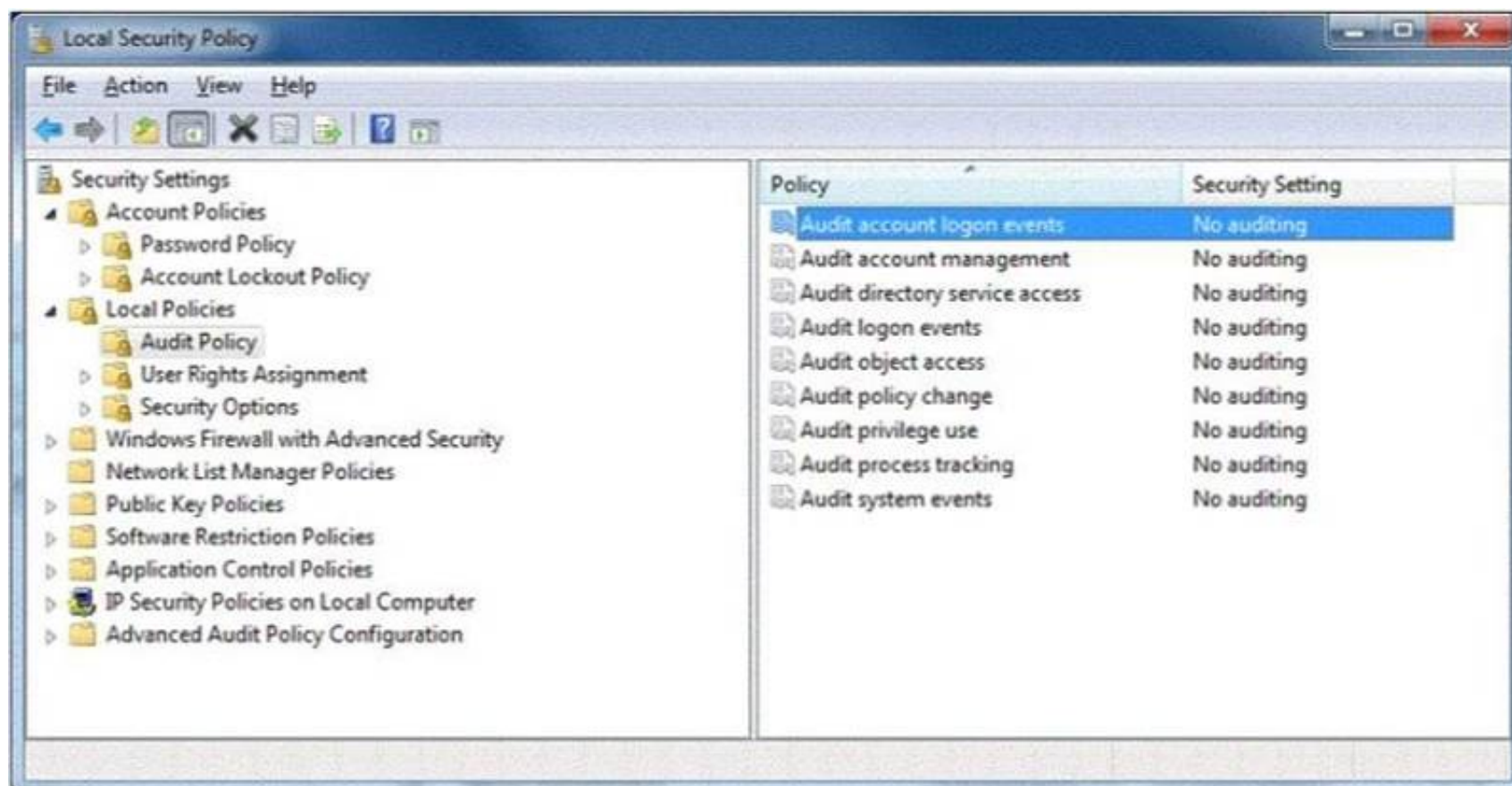
Answer: AB

Explanation: Reference: <http://technet.microsoft.com/en-us/library/cc875814.aspx>

NEW QUESTION 105

HOTSPOT

You are preparing a local audit policy for your workstation. No auditing is enabled. The settings of your policy are shown in the following image:



Use the drop-down menus to select the answer choice that completes each statement. Each correct selection is worth one point.

Answer Area

In order to log each time the computer validates account credentials, the **[answer choice]** policy needs to be enabled.

You need to log each time someone reboots the workstation. The **[answer choice]** policy will log a reboot of the computer.

Answer Area

In order to log each time the computer validates account credentials, the **[answer choice]** policy needs to be enabled.

- Audit account logon events
- Audit logon events
- Audit object access

You need to log each time someone reboots the workstation. The **[answer choice]** policy will log a reboot of the computer.

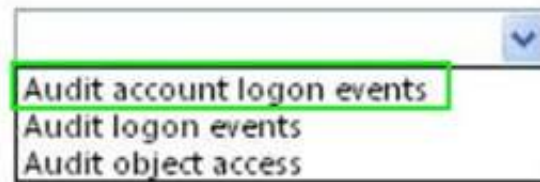
- Audit system events
- Audit process tracking
- Audit logon events

Answer:

Explanation:

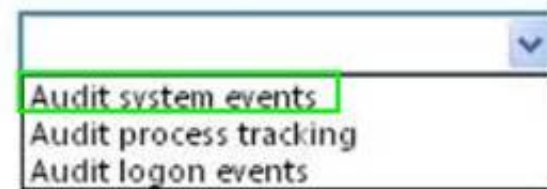
Answer Area

In order to log each time the computer validates account credentials, the **[answer choice]** policy needs to be enabled.



A screenshot of a Windows Event Viewer policy selection dropdown. The dropdown is open, showing three options: 'Audit account logon events' (highlighted with a green box), 'Audit logon events', and 'Audit object access'.

You need to log each time someone reboots the workstation. The **[answer choice]** policy will log a reboot of the computer.



A screenshot of a Windows Event Viewer policy selection dropdown. The dropdown is open, showing three options: 'Audit system events' (highlighted with a green box), 'Audit process tracking', and 'Audit logon events'.

NEW QUESTION 106

Creating MD5 hash for files is an example of ensuring what?

- A. Confidentiality
- B. Availability
- C. Least privilege
- D. Integrity

Answer: D

Explanation: The MD5 message-digest algorithm is a widely used cryptographic hash function producing a 128-bit (16-byte) hash value, typically expressed in text format as a 32 digit hexadecimal number. MD5 has been utilized in a wide variety of cryptographic applications, and is also commonly used to verify data integrity.

NEW QUESTION 110

The manager of a coffee shop hires you to securely set up WiFi in the shop.
 To keep computer users from seeing each other, what should you use with an access point?

- A. Client bridge mode
- B. Client isolation mode
- C. MAC address filtering
- D. Client mode

Answer: B

Explanation: Wireless Client Isolation is a unique security feature for wireless networks. When Client Isolation is enabled any and all devices connected to the wireless LAN will be unable to talk to each other.

NEW QUESTION 115

The client computers on your network are stable and do not need any new features. Which is a benefit of applying operating system updates to these clients?

- A. Keep the software licensed
- B. Keep the server ports available
- C. Update the hardware firewall
- D. Close existing vulnerabilities

Answer: D

NEW QUESTION 117

Network Access Protection (NAP) enables administrators to control access to network resources based on a computer's:

- A. Encryption level
- B. Warranty
- C. Physical location
- D. Configuration

Answer: D

Explanation: Network Access Protection (NAP) is a new set of operating system components included with the Windows Server® 2008 and Windows Vista® operating systems that provides a platform to help ensure that client computers on a private network meet administrator-defined requirements for system health. NAP policies define the required configuration and update status for a client computer's operating system and critical software. For example, computers might be required to have antivirus software with the latest signatures installed, current operating system updates installed, and a host-based firewall enabled. By enforcing compliance with health requirements, NAP can help network administrators mitigate some of the risk caused by improperly configured client computers that might be exposed to viruses and other malicious software.

NEW QUESTION 118

HOTSPOT

For each of the following statements, select Yes if the statement is true. Otherwise, select No. Each correct selection is worth one point.

Answer Area

	Yes	No
By using NAP, administrators can place non-compliant computers onto restricted networks.	<input type="radio"/>	<input type="radio"/>
All computers that are not in compliance with NAP policies require manual intervention to be brought into compliance.	<input type="radio"/>	<input type="radio"/>
NAP can enforce that client computers are running a firewall.	<input type="radio"/>	<input type="radio"/>

Answer:

Explanation: Answer Area

	Yes	No
By using NAP, administrators can place non-compliant computers onto restricted networks.	<input checked="" type="radio"/>	<input type="radio"/>
All computers that are not in compliance with NAP policies require manual intervention to be brought into compliance.	<input type="radio"/>	<input checked="" type="radio"/>
NAP can enforce that client computers are running a firewall.	<input checked="" type="radio"/>	<input type="radio"/>

NEW QUESTION 122

What is the primary advantage of using Active Directory Integrated Zones?

- A. Zone encryption
- B. Password protection
- C. Non-repudiation
- D. Secure replication

Answer: D

Explanation: Reference: <http://books.google.com/books?id=CXy-2LBZCVgC&pg=PA201&dq=%22Active+Directory+Integrated+Zones%22,+Secure+replication&hl=en&sa=X&ei=9s92U-v1KI-zyASjzILIDg&ved=0CE0Q6AEwAQ#v=onepage&q=%22Active%20Directory%20Integrated%20Zones%22%2C%20Secure%20replication&f=false>

NEW QUESTION 127

Which three elements does HTTPS encrypt? (Choose three.)

- A. Browser cookies
- B. Server IP address
- C. Port numbers
- D. Website URL
- E. Login information

Answer: ADE

Explanation: Reference: <http://stackoverflow.com/questions/499591/are-https-urls-encrypted>

NEW QUESTION 132

Which two characteristics should you recommend for a user's domain password? (Choose two.)

- A. Hard to guess
- B. Includes Unicode characters
- C. Easy to remember
- D. Easy to increment

Answer: AC

Explanation: Reference: <http://www.usewisdom.com/computer/passwords.html>

NEW QUESTION 137

You sign up for an online bank account. Every 6 months, the bank requires you to change your password. You have changed your password 5 times in the past. Instead of coming up with a new password, you decide to use one of your past passwords, but the bank's password history prevents you on doing so. Select the correct answer if the underlined text does not make the statement correct Select "No change is needed" if the underlined text makes the statement correct.

- A. Minimum password age
- B. Maximum password duration
- C. Password complexity
- D. No change is needed.

Answer: D

NEW QUESTION 140

HOTSPOT

For each of the following statements, select Yes if the statement is true. Otherwise, select No. Each correct selection is worth one point.

Answer Area

	Yes	No
To protect users from untrusted browser pop-ups, you may set a default browser configuration that blocks all pop-ups and automated downloads.	<input type="radio"/>	<input type="radio"/>
Online pop-ups and dialog boxes can display a realistic operating system or application error messages.	<input type="radio"/>	<input type="radio"/>
Protecting users from untrusted pop-up applications is mostly a function of awareness.	<input type="radio"/>	<input type="radio"/>

Answer:

Explanation: **Answer Area**

	Yes	No
To protect users from untrusted browser pop-ups, you may set a default browser configuration that blocks all pop-ups and automated downloads.	<input type="radio"/>	<input checked="" type="radio"/>
Online pop-ups and dialog boxes can display a realistic operating system or application error messages.	<input checked="" type="radio"/>	<input type="radio"/>
Protecting users from untrusted pop-up applications is mostly a function of awareness.	<input checked="" type="radio"/>	<input type="radio"/>

NEW QUESTION 143

HOTSPOT

For each of the following statements, select Yes if the statement is true. Otherwise, select No. Each correct selection is worth one point.

Answer Area

	Yes	No
If your computer is on a domain, your network administrator can reset your password.	<input type="radio"/>	<input type="radio"/>
An administrator account can reset a password for a standard user account.	<input type="radio"/>	<input type="radio"/>
There is a risk of losing access to encrypted files if a password is reset.	<input type="radio"/>	<input type="radio"/>

Answer:
Explanation: Answer Area

	Yes	No
If your computer is on a domain, your network administrator can reset your password.	<input checked="" type="radio"/>	<input type="radio"/>
An administrator account can reset a password for a standard user account.	<input checked="" type="radio"/>	<input type="radio"/>
There is a risk of losing access to encrypted files if a password is reset.	<input checked="" type="radio"/>	<input type="radio"/>

NEW QUESTION 146
You need to grant a set of users write access to a file on a network share. You should add the users to:

- A. A security group
- B. The Authenticated Users group
- C. The Everyone group
- D. A distribution group

Answer: B

NEW QUESTION 149
This question requires that you evaluate the underlined text to determine if it is correct. The first line of defense against attacks from the Internet is a software firewall.
Select the correct answer if the underlined text does not make the statement correct. Select "No change is needed" if the underlined text makes the statement correct.

- A. hardware firewall
- B. virus software
- C. radius server
- D. No change is needed

Answer: A

NEW QUESTION 150
To keep third-party content providers from tracking your movements on the web, enable InPrivate Browsing.
Select the correct answer if the underlined text does not make the statement correct. Select "No change is needed" if the underlined text makes the statement correct.

- A. InPrivate Filtering
- B. SmartScreen Filter
- C. Compatibility Mode
- D. No change is needed

Answer: A

NEW QUESTION 155

HOTSPOT

For each of the following statements, select Yes if the statement is true. Otherwise, select No. Each correct selection is worth one point.

Answer Area

	Yes	No
You can view audit logs in the Event Viewer.	<input type="radio"/>	<input type="radio"/>
Audit logs have a set size limit and cannot be adjusted.	<input type="radio"/>	<input type="radio"/>
You can configure an email event notification for an audited activity.	<input type="radio"/>	<input type="radio"/>

Answer:

Explanation: **Answer Area**

	Yes	No
You can view audit logs in the Event Viewer.	<input checked="" type="radio"/>	<input type="radio"/>
Audit logs have a set size limit and cannot be adjusted.	<input type="radio"/>	<input checked="" type="radio"/>
You can configure an email event notification for an audited activity.	<input checked="" type="radio"/>	<input type="radio"/>

NEW QUESTION 156

What is an example of non-propagating malicious code?

- A. A back door
- B. A hoax
- C. A Trojan horse
- D. A worm

Answer: A

NEW QUESTION 158

Which is the minimum requirement to create BitLocker-To-Go media on a client computer?

- A. Windows XP Professional Service Pack 3
- B. Windows Vista Enterprise Edition
- C. Windows 7 Enterprise Edition
- D. Windows 2000 Professional Service Pack 4

Answer: A

NEW QUESTION 159

A brute force attack:

- A. Uses response filtering
- B. Tries all possible password variations
- C. Uses the strongest possible algorithms

D. Targets all the ports

Answer: B

NEW QUESTION 163

Bridging is a process of sending packets from source to destination on OSI layer 3.

Select the correct answer if the underlined text does not make the statement correct. Select "No change is needed" if the underlined text makes the statement correct.

- A. Routing
- B. Switching
- C. Repeating
- D. No change is needed.

Answer: A

NEW QUESTION 165

In Internet Explorer 8, the InPrivate Browsing feature prevents:

- A. Unauthorized private data input.
- B. Unencrypted communication between the client computer and the server.
- C. User credentials from being sent over the Internet.
- D. Any session data from being stored on the computer.

Answer: D

Explanation: Reference: <http://windows.microsoft.com/en-us/windows/what-is-inprivate-browsing>

NEW QUESTION 167

Which two are included in an enterprise antivirus program? (Choose two.)

- A. Attack surface scanning
- B. On-demand scanning
- C. Packet scanning
- D. Scheduled scanning

Answer: BD

NEW QUESTION 169

HOTSPOT

For each of the following statements, select Yes if the statement is true. Otherwise, select No. Each correct selection is worth one point.

Answer Area

	Yes	No
An intruder can spoof MAC addresses to get around MAC address filtering.	<input type="radio"/>	<input type="radio"/>
Intruders can find a wireless network if the Service Set Identifier (SSID) is hidden.	<input type="radio"/>	<input type="radio"/>
WEP security is strong as long as it has a 128-bit key.	<input type="radio"/>	<input type="radio"/>

Answer:

Explanation:

Answer Area

	Yes	No
An intruder can spoof MAC addresses to get around MAC address filtering.	<input checked="" type="radio"/>	<input type="radio"/>
Intruders can find a wireless network if the Service Set Identifier (SSID) is hidden.	<input checked="" type="radio"/>	<input type="radio"/>
WEP security is strong as long as it has a 128-bit key.	<input type="radio"/>	<input checked="" type="radio"/>

NEW QUESTION 170

HOTSPOT

An employee where you work is unable to access the company message board in Internet Explorer. You review her Internet Options dialog box, as shown in the following image:



Use the drop-down menus to select the answer choice that completes each statement. Each correct selection is worth one point.

Answer Area

The message board, <http://mkteam/>, would be affected by settings under the **[answer choice]** security zone.

The employee can see the site, but ActiveX controls will not load. You have to **[answer choice]**

Answer Area

The message board, <http://mkteam/>, would be affected by settings under the **[answer choice]** security zone.

Internet
Local Intranet
Restricted Sites

The employee can see the site, but ActiveX controls will not load. You have to **[answer choice]**

change the security level on Local Intranet.
change the security level on Internet.
uncheck Enable Protected Mode.

Answer:

Explanation: **Answer Area**

The message board, <http://mkteam/>, would be affected by settings under the **[answer choice]** security zone.

Internet
Local Intranet
Restricted Sites

The employee can see the site, but ActiveX controls will not load. You have to **[answer choice]**

change the security level on Local Intranet.
change the security level on Internet.
uncheck Enable Protected Mode.

NEW QUESTION 173

Keeping a server updated:

- A. Maximizes network efficiency
- B. Fixes security holes
- C. Speeds up folder access
- D. Synchronizes the server

Answer: B

NEW QUESTION 177

HOTSPOT

For each of the following statements, select Yes if the statement is true. Otherwise, select No. Each correct selection is worth one point.

Answer Area

	Yes	No
DNSSEC prevents spoofing of query responses.	<input type="radio"/>	<input type="radio"/>
Clients can verify that the DNS server that they are communicating with is legitimate.	<input type="radio"/>	<input type="radio"/>
DNSSEC prevents man-in-the-middle attacks for DNS queries.	<input type="radio"/>	<input type="radio"/>

Answer:

Explanation: Answer Area

	Yes	No
DNSSEC prevents spoofing of query responses.	<input checked="" type="radio"/>	<input type="radio"/>
Clients can verify that the DNS server that they are communicating with is legitimate.	<input checked="" type="radio"/>	<input type="radio"/>
DNSSEC prevents man-in-the-middle attacks for DNS queries.	<input checked="" type="radio"/>	<input type="radio"/>

NEW QUESTION 182
A mail system administrator scans for viruses in incoming emails to increase the speed of mail processing.
Select the correct answer if the underlined text does not make the statement correct. Select "No change is needed" if the underlined text makes the statement correct.

A. Decrease the chances of a virus getting to a client machine
B. Verify that the senders of the messages are legitimate
C. Ensure that all links in the messages are trustworthy
D. No change is needed.

Answer: A

NEW QUESTION 186
HOTSPOT
For each of the following statements, select Yes if the statement is true. Otherwise, select No. Each correct selection is worth one point.

Answer Area

	Yes	No
There are several built-in basic audit policies and advanced audit policies in Windows.	<input type="radio"/>	<input type="radio"/>
Advanced audit policies applied by a Group Policy are compatible with a basic audit policy.	<input type="radio"/>	<input type="radio"/>
A system access control list (SACL) enables administrators to log attempts to access a secured object.	<input type="radio"/>	<input type="radio"/>

Answer:

Explanation: **Answer Area**

	Yes	No
There are several built-in basic audit policies and advanced audit policies in Windows.	<input checked="" type="radio"/>	<input type="radio"/>
Advanced audit policies applied by a Group Policy are compatible with a basic audit policy.	<input type="radio"/>	<input checked="" type="radio"/>
A system access control list (SACL) enables administrators to log attempts to access a secured object.	<input checked="" type="radio"/>	<input type="radio"/>

NEW QUESTION 191

Humongous Insurance needs to set up a domain controller in a branch office. Unfortunately, the server cannot be sufficiently secured from access by employees in that office, so the company is installing a Primary Domain Controller. Select the correct answer if the underlined text does not make the statement correct. Select "No change is needed" if the underlined text makes the statement correct.

- A. Read-Only Domain Controller
- B. Backup Domain Controller
- C. Active Directory Server
- D. No change is needed.

Answer: A

NEW QUESTION 193

What does NAT do?

- A. It encrypts and authenticates IP packets.
- B. It provides caching and reduces network traffic.
- C. It translates public IP addresses to private addresses and vice versa.
- D. It analyzes incoming and outgoing traffic packets.

Answer: C

Explanation: Reference: http://en.wikipedia.org/wiki/Network_address_translation

NEW QUESTION 196

Setting a minimum password age restricts when users can:

- A. Request a password reset
- B. Change their passwords

- C. Log on by using their passwords
- D. Set their own password expiration

Answer: B

Explanation: Configure the minimum password age to be more than 0 if you want Enforce password history to be effective. Without a minimum password age, users can cycle through passwords repeatedly until they get to an old favorite.

NEW QUESTION 199

You would implement a wireless intrusion prevention system to:

- A. Prevent wireless interference
- B. Detect wireless packet theft
- C. Prevent rogue wireless access points
- D. Enforce SSID broadcasting

Answer: C

Explanation: Reference: http://en.wikipedia.org/wiki/Wireless_intrusion_prevention_system

NEW QUESTION 201

You are trying to establish communications between a client computer and a server. The server is not responding. You confirm that both the client and the server have network connectivity. Which should you check next?

- A. Microsoft Update
- B. Data Execution Prevention
- C. Windows Firewall
- D. Active Directory Domains and Trusts

Answer: D

NEW QUESTION 203

.....

THANKS FOR TRYING THE DEMO OF OUR PRODUCT

Visit Our Site to Purchase the Full Set of Actual 98-367 Exam Questions With Answers.

We Also Provide Practice Exam Software That Simulates Real Exam Environment And Has Many Self-Assessment Features. Order the 98-367 Product From:

<https://www.2passeasy.com/dumps/98-367/>

Money Back Guarantee

98-367 Practice Exam Features:

- * 98-367 Questions and Answers Updated Frequently
- * 98-367 Practice Questions Verified by Expert Senior Certified Staff
- * 98-367 Most Realistic Questions that Guarantee you a Pass on Your FirstTry
- * 98-367 Practice Test Questions in Multiple Choice Formats and Updatesfor 1 Year