

## 98-365 Dumps

### Windows Server Administration Fundamentals

<https://www.certleader.com/98-365-dumps.html>



### NEW QUESTION 1

Users report that they are unable to print. You verify that the print spooler service is running. What should you do next?

- A. Purge the service
- B. Disable the service
- C. Pause the service
- D. Restart the service

**Answer:** D

### NEW QUESTION 2

To convert a disk from dynamic to basic, you must first:

- A. Mirror all disk volumes.
- B. Connect the disk to a different controller.
- C. Delete all disk volumes.
- D. Format all disk volumes in the NTFS file system.

**Answer:** C

#### Explanation:

To change a dynamic disk back to a basic disk using the Windows interface

? Back up all volumes on the disk you want to convert from dynamic to basic.

? In Disk Management, right-click each volume on the dynamic disk you want to convert to a basic disk, and then click Delete Volume for each volume on the disk.

? When all volumes on the disk have been deleted, right-click the disk, and then click Convert to Basic Disk.

### NEW QUESTION 3

#### HOTSPOT

For each of the following statements, select Yes if the statement is true. Otherwise, select No. Each correct selection is worth one point.

#### Answer Area

	Yes	No
A 32-bit client machine can use the 64-bit version of a printer driver.	<input type="radio"/>	<input type="radio"/>
A server can have multiple driver types installed for a single printer.	<input type="radio"/>	<input type="radio"/>
The print server must be 64-bit to support 64-bit and 32-bit clients.	<input type="radio"/>	<input type="radio"/>

- A. Mastered
- B. Not Mastered

**Answer:** A

#### Explanation:

#### Answer Area

	Yes	No
A 32-bit client machine can use the 64-bit version of a printer driver.	<input type="radio"/>	<input checked="" type="radio"/>
A server can have multiple driver types installed for a single printer.	<input checked="" type="radio"/>	<input type="radio"/>
The print server must be 64-bit to support 64-bit and 32-bit clients.	<input checked="" type="radio"/>	<input type="radio"/>

### NEW QUESTION 4

Which type of additional drivers does the Windows 7 installation phase prompt for?

- A. Video
- B. Network
- C. Use
- D. Storage

**Answer:** D

#### Explanation:

You might be prompted for the mass storage device driver. When installing Windows 7, you might see one of the following error messages:

\* No drives were found. Click Load Driver to provide a mass storage driver for installation.

\* Windows Setup could not configure Windows to run on this computer's hardware.

Reference: <http://windows.microsoft.com/en-us/windows7/windows-7-installation-problem-hard-drive-not-found>

#### NEW QUESTION 5

Disk mirroring occurs when data is:

- A. Duplicated on the same disk.
- B. Backed up by using parity.
- C. Duplicated on separate disks.
- D. Split between disks.

**Answer:** C

#### NEW QUESTION 6

By default, group policies are first applied to networked computers when the:

- A. Computer is backed up.
- B. Computer starts up.
- C. User accesses a shared drive.
- D. User runs gpresult.exe.

**Answer:** B

#### NEW QUESTION 7

You notice frequent writes to the page file.

Which should you monitor to determine the cause?

- A. CPU
- B. RAM
- C. Network
- D. Hard disk

**Answer:** B

#### Explanation:

When the RAM is full the page file is used as virtual RAM.

#### NEW QUESTION 8

You need to find a list of specific events. What should you do?

- A. Export the events to a .doc file.
- B. Clear the log by saving it.
- C. Filter by creating a custom view.
- D. Use the Search menu option.

**Answer:** C

#### Explanation:

Quickly Filter Event Logs in Windows Server 2008

The Event Viewer automatically creates several filtered views of the event logs. Filtered views are listed under the Custom Views node.

#### NEW QUESTION 9

Which disk types can be used for internal storage?

- A. SAN/iSCSI
- B. NFS/Distributed File System (DFS)
- C. PATA/SATA/SCSI
- D. NAS/Fiber-channel

**Answer:** C

#### NEW QUESTION 10

Which technology is designed to help teams collaborate?

- A. Microsoft SharePoint Server
- B. Microsoft System Center Operations Manager
- C. Microsoft Forefront Identity Manager
- D. Microsoft BizTalk Server

**Answer:** A

#### Explanation:

\* Organizations use SharePoint to create websites. You can use it as a secure place to store, organize, share, and access information from almost any device. All you need is a web browser, such as Internet Explorer, Chrome, or Firefox.

\* SharePoint Workspace A desktop program that you can use to take SharePoint site content offline and collaborate on the content with others while you are disconnected from the network. While you and other team members are offline, you can make changes to

\* SharePoint content that will eventually synchronize back to the SharePoint site.

Incorrect:

not B: System Center 2012 – Operations Manager provides infrastructure monitoring that is flexible and cost-effective, helps ensure the predictable performance and availability of vital applications, and offers comprehensive monitoring for your datacenter and cloud, both private and public.

Not C: Microsoft Forefront Identity Manager 2010 R2 delivers self-service identity management for users, automates lifecycle management across heterogeneous platforms for administrators, and provides a rich policy framework for enforcing corporate security policies.

Not D: Microsoft BizTalk Server (or simply "BizTalk") enables companies to automate business processes, through the use of adapters which are tailored to communicate with different software systems used in an enterprise.

#### NEW QUESTION 10

You often stop by Fourth Coffee before class. The owner knows you are studying computer networking. One morning, the owner asks for your help with a file server because it is running slower than usual.

Which two tools should you use to diagnose the problem with this server? (Choose two.)

- A. Task Manager
- B. Share & Storage Management
- C. Device Manager
- D. Perfmon
- E. Profiler

**Answer:** AD

#### Explanation:

A: The Performance tab of the Task Manager could be checked. D: Perfmon is the performance monitor in Windows.

#### NEW QUESTION 12

The owner of Fourth Coffee wants to add a new computer to the company network. The owner configures the Host Address for the computer but still cannot connect to the network.

Which component should the owner use to connect to the network?

- A. DNS Server
- B. DHCP address
- C. Subnet mask
- D. Domain name

**Answer:** C

#### Explanation:

The second item the subnet mask is missing here. It is required for TCP/IP to work.

Reference: Understanding TCP/IP addressing and subnetting basics <https://support.microsoft.com/en-us/kb/164015>

#### NEW QUESTION 17

This question requires that you evaluate the underlined text to determine if it is correct. The "Security" log in Event Viewer shows information regarding server reboots.

Select the correct answer if the underlined text does not make the statement correct. Select "No change is needed" if the underlined text makes the statement correct.

- A. Application
- B. Setup
- C. System
- D. No change is needed

**Answer:** C

#### Explanation:

System logs include system events such as server reboots.

#### NEW QUESTION 18

This question requires that you evaluate the underlined text to determine if it is correct.

Active Directory "Distribution groups" can only be assigned permissions to resources within the same domain but can have members from other domains.

Select the correct answer if the underlined text does not make the statement correct. Select "No change is needed" if the underlined text makes the statement correct.

- A. Global groups
- B. Universal groups
- C. Domain local groups
- D. No change is needed

**Answer:** C

#### Explanation:

Distributions groups are used as recipients of email messages.

Domain local groups:

\* Member permissions can be assigned only within the same domain as the parent domain local group

\* Group can include as member: Accounts from any domain Global groups from any domain

Universal groups from any domain

Reference: Group scope

<https://technet.microsoft.com/en-us/library/cc755692%28v=ws.10%29.aspx>

Domain local groups but only from the same domain as the parent domain local group

**NEW QUESTION 21**

Running a system in safe mode:

- A. protects the system from viruses.
- B. protects the system from data loss.
- C. loads a minimum number of drivers.
- D. prevents unauthorized access.

**Answer:** C

**NEW QUESTION 26**

You need to grant a set of users permissions to a specific folder. Where should you place the user accounts?

- A. Domain root
- B. Security group
- C. Shared folder
- D. Organizational Unit

**Answer:** :D

**Explanation:**

Place the users in an OU. Assign permissions to the OU for the specific folder.

**NEW QUESTION 29**

Which provides centralized management of users and computers?

- A. Active Directory
- B. Windows Internet Name Service (WINS)
- C. Dynamic Host Configuration Protocol (DHCP)
- D. Remote Access

**Answer:** A

**Explanation:**

Active Directory (AD) is a directory service implemented by Microsoft for Windows domain networks. It is included in most Windows Server operating systems. An AD domain controller authenticates and authorizes all users and computers in a Windows domain type network—assigning and enforcing security policies for all computers and installing or updating software.

**NEW QUESTION 31**

Which technology provides both e-mail and database services?

- A. Windows Server Enterprise Edition
- B. Microsoft Office Communications Server
- C. Windows Small Business Server
- D. Microsoft Project Server

**Answer:** C

**Explanation:**

Windows Small Business Server is available in Essentials, Standard, and Premium editions. Essentials is a scaled down version for 1-25 users, both the other editions are based on the Windows Server codebase and include Microsoft Exchange Server mail server, Internet Information Services (IIS) web server, Windows SharePoint Services for collaboration, Microsoft Office Outlook 2003 email client (not included in 2008), Routing and Remote Access Service (RRAS), Windows Server Update Services for update management across the network, and a Fax server. Up to SBS 2003, the Premium edition also included Microsoft SQL Server, Microsoft Internet Security and Acceleration Server and Microsoft Office FrontPage 2003.

**NEW QUESTION 36**

**HOTSPOT**

For each of the following statements, select Yes if the statement is true. Otherwise, select No. Each correct selection is worth one point.

**Answer Area**

	Yes	No
An organizational unit can only contain objects within its parent domain.	<input type="radio"/>	<input type="radio"/>
Two organizational units from different domains can share objects.	<input type="radio"/>	<input type="radio"/>
An organizational unit administrator requires domain administrator rights.	<input type="radio"/>	<input type="radio"/>

- A. Mastered
- B. Not Mastered

**Answer:** A



**Explanation:**

**Answer Area**

	Yes	No
An organizational unit can only contain objects within its parent domain.	<input checked="" type="radio"/>	<input type="radio"/>
Two organizational units from different domains can share objects.	<input type="radio"/>	<input checked="" type="radio"/>
An organizational unit administrator requires domain administrator rights.	<input type="radio"/>	<input checked="" type="radio"/>

**NEW QUESTION 41**

What is the name for a stand-alone digital storage system connected directly to a server or workstation HBA?

- A. Small Computer System Interface (SCSI)
- B. Direct Attached Storage (DAS)
- C. Network Attached Storage (NAS)
- D. Storage Area Network (SAN)

**Answer:** A

**Explanation:**

The term HBA applies to a variety of interconnects, it is most commonly used with storage protocols such as Fibre Channel (FC) and serial-attached SCSI (SAS). Note: A host bus adapter (HBA) is a circuit board and/or integrated circuit adapter that provides input/output (I/O) processing and physical connectivity between a host system, or server, and a storage and/or network device.

Reference: <http://searchstorage.techtarget.com/definition/host-bus-adapter>

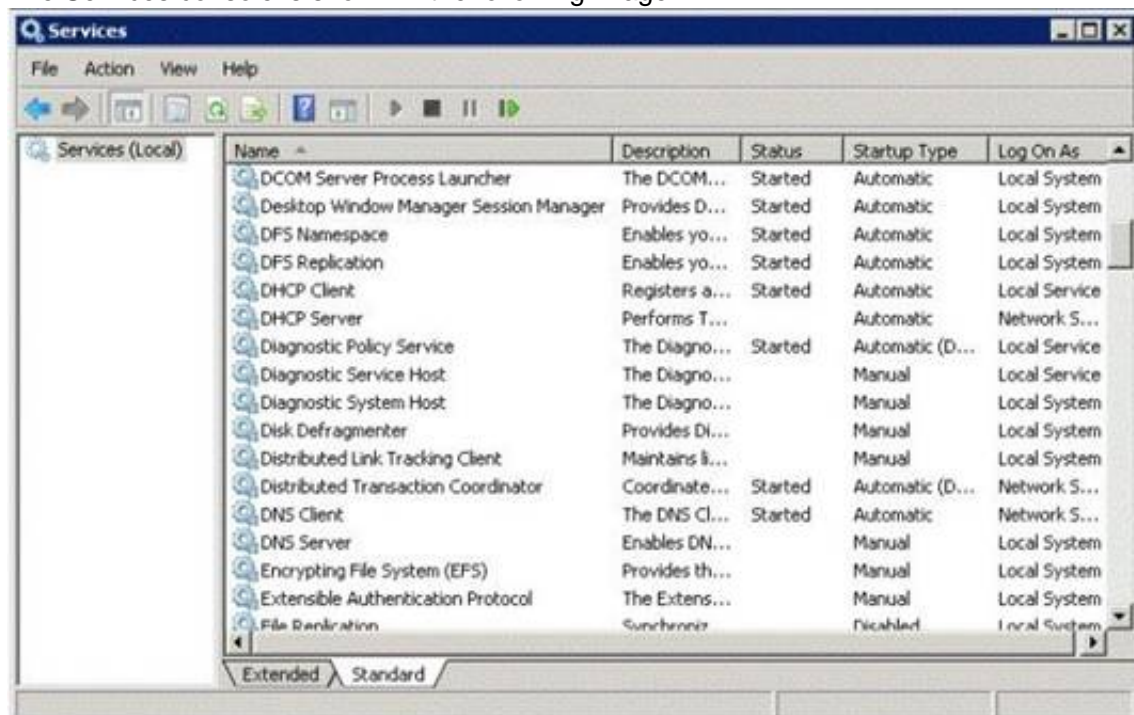
**NEW QUESTION 46**

**HOTSPOT**

You restart the Windows Server 2008 R2 server for your computer lab.

After the restart, a workstation cannot connect to any local network resource. Other workstations in the lab can connect to local network resources, but cannot browse the Internet.

The Services console is shown in the following image:



Use the drop-down menus to select the answer choice that completes each statement. Each correct selection is worth one point.

**Answer Area**

Changing the status of the DHCP Server service to **[answer choice]** allows the users to receive working IP addresses.

Resume  
Automatic  
Started

Setting the DNS Server service startup type to **[answer choice]** restores name resolution services when the server is rebooted.

Manual  
Automatic  
Started

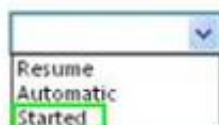
- A. Mastered
- B. Not Mastered

**Answer:** A

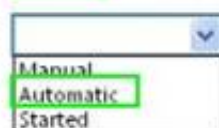
**Explanation:**

**Answer Area**

Changing the status of the DHCP Server service to **[answer choice]** allows the users to receive working IP addresses.



Setting the DNS Server service startup type to **[answer choice]** restores name resolution services when the server is rebooted.

**NEW QUESTION 49**

What is the minimum number of disks required for RAID 5?

- A. 1
- B. 2
- C. 3
- D. 5

**Answer:** :C

**Explanation:**

You would need two disks for data and one for parity.

**NEW QUESTION 53**

This question requires that you evaluate the underlined text to determine if it is correct.

The minimum permission needed to delete other users' documents from a print queue is "Print".

Select the correct answer if the underlined text does not make the statement correct. Select 'No change is needed' if the underlined text makes the statement correct.

- A. Manage Documents
- B. Manage Printers
- C. Deny
- D. No change is needed

**Answer:** A

**Explanation:**

Manage documents. If you have this permission, you can manage all jobs for a printer that are waiting in the print queue, including documents or files that are being printed by other users.

Incorrect:

Not D: With print permissions you can only delete your own documents.

Reference: <http://windows.microsoft.com/en-us/windows-vista/what-are-printer-permissions>

**NEW QUESTION 57**

The manager at the coffee house where you work asks for advice on adding storage to the store's server to perform backups.

The additional storage must meet the following requirements:

? Hold at least 600 GB

? Be reasonably priced

? Be reasonably fast

Which solution should you recommend?

- A. USB hard drive
- B. USB flash drive
- C. SCSI tape backup system
- D. External SCSI hard drive

**Answer:** C

**NEW QUESTION 62**

Which type of folder permissions takes precedence?

- A. Explicit Deny permissions
- B. Explicit Allow permissions
- C. Inherited Deny permissions
- D. Inherited Allow permissions

**Answer:** A

**Explanation:**

Here are some rules for resolving permissions conflicts:

"Deny" permissions generally take precedence over "allow" permissions. Permissions applied directly to an object (explicit permissions) take precedence over permissions inherited from a parent (for example from a group).

Permissions inherited from near relatives take precedence over permissions inherited from distant predecessors. So permissions inherited from the object's parent folder take precedence over permissions inherited from the object's "grandparent" folder, and so on.

Permissions from different user groups that are at the same level (in terms of being directly-set or inherited, and in terms of being "deny" or "allow") are cumulative. So if a user is a member of two groups, one of which has an "allow" permission of "Read" and the other has an "allow" of "Write", the user will have both read and write permission--depending on the other rules above, of course.

**NEW QUESTION 63**

**HOTSPOT**

For each of the following statements, select Yes if the statement is true. Otherwise, select No. Each correct selection is worth one point.

Answer Area

	Yes	No
Active Directory groups can be used to assign permissions on a shared folder on a member server.	<input type="radio"/>	<input type="radio"/>
Active Directory groups can be linked to Active Directory group policies.	<input type="radio"/>	<input type="radio"/>
Local groups on a member server can be members of global groups in a domain.	<input type="radio"/>	<input type="radio"/>

- A. Mastered
- B. Not Mastered

Answer: A

**Explanation:**

Answer Area

	Yes	No
Active Directory groups can be used to assign permissions on a shared folder on a member server.	<input checked="" type="radio"/>	<input type="radio"/>
Active Directory groups can be linked to Active Directory group policies.	<input checked="" type="radio"/>	<input type="radio"/>
Local groups on a member server can be members of global groups in a domain.	<input type="radio"/>	<input checked="" type="radio"/>

**NEW QUESTION 67**

By default, which group can create and link Group Policy Objects?

- A. Authenticated Users
- B. Domain Users
- C. Domain Administrators
- D. Local Administrators

Answer: :C

**Explanation:**

The Domain Administrators are the only people who can create GPOs by default.

**NEW QUESTION 72**

You are an IT intern for Tailspin Toys.

Your manager attends a conference out of town and wants you to perform routine maintenance directly on a Windows 2008 R2 server console.

Because you have restricted access, you need your manager to enter credentials at a UAC prompt in your session.

What should you do?

- A. Have your manager use Server Manager to connect to the server.
- B. Have your manager use Remote Administration to connect to the server.
- C. Send a Remote Assistance request to your manager.
- D. Have your manager use Remote Desktop to connect to the server.

Answer: C

**Explanation:**

With Remote Assistance the manager can take control of your computer and enter the password.

Note: Remote Assistance enables a trusted person (a friend, support person, or IT administrator) to remotely and actively assist someone with a computer problem. The helper (also called an expert) can view the screen of the user requesting assistance and offer advice. With the permission of the user, the helper can take control of the user's computer and perform tasks remotely.

Reference: Administering Remote Assistance <https://technet.microsoft.com/en-us/library/bb456978.aspx>

**NEW QUESTION 75**

You need to make a share hidden. Which symbol should you append to the share name?

- A. \_
- B. !
- C. @
- D. #
- E. \$

Answer: E



**Explanation:**

The "\$" appended to the end of the share name means that it is a hidden share. Windows will not list such shares among those it defines in typical queries by remote clients to obtain the list of shares. One needs to know the name of an administrative share in order to access it. Not every hidden share is administrative share; in other words, ordinary hidden shares may be created at user's discretion.

**NEW QUESTION 79**

You enable Remote Desktop. Which group will be granted access by default?

- A. Domain users group
- B. Remote access security group
- C. Local administrators group
- D. Local users group

**Answer:** :C

**Explanation:**

Configure Remote Desktop Access on Windows 7 Systems

Remote Desktop is not enabled by default. You must specifically enable it to allow remote access to the workstation. When it is enabled, any member of the [local] Administrators group can connect to the workstation. Other users must be placed on a remote access list to gain access to the workstation.

**NEW QUESTION 80**

What is required to create a volume mount point?

- A. A dynamic disk
- B. RAID 1 implementation
- C. An NTFS file system volume or partition
- D. Extended volumes

**Answer:** C

**Explanation:**

A volume mount point can be placed in any empty folder of the host NTFS volume.

**NEW QUESTION 83**

You need to install a driver. Where should you get the driver?

- A. The Task Manager
- B. The device manufacturer
- C. The system firmware
- D. The Hardware Compatibility List

**Answer:** B

**Explanation:**

The device manufacturer should provide a driver.

**NEW QUESTION 87**

This question requires that you evaluate the underlined text to determine if it is correct. Settings from the "Local" Group Policy Object are processed last during logon.

Select the correct answer if the underlined text does not make the statement correct. Select 'No change is needed' if the underlined text makes the statement correct.

- A. Site
- B. Organizational Unit
- C. Domain
- D. No change is needed.

**Answer:** B

**Explanation:**

Group Policy settings are processed in the following order:

? Local Group Policy object

2. Site

3. Domain

4. Organizational Unit

Reference: Group Policy processing and precedence <https://technet.microsoft.com/en-us/library/cc785665%28v=ws.10%29.aspx>

**NEW QUESTION 91**

You need to apply a Windows Server 2008 group policy. You also need to prevent policies that are applied at lower levels from affecting this new policy. What should you do?

- A. Set the policy to Loopback
- B. Set the permission to Full Control
- C. Select the Enforced policy link setting
- D. Select the Enabled policy link setting

**Answer:** C

**Explanation:**

Example:

To enforce a Group Policy object link

? In the Group Policy Management Console (GPMC) console tree, double-click the

forest containing the domain, site, or organizational unit (OU) containing the link you want to enforce, and then do one of the following:

? Right-click the GPO link, and then click Enforced to enable or disable enforcing the

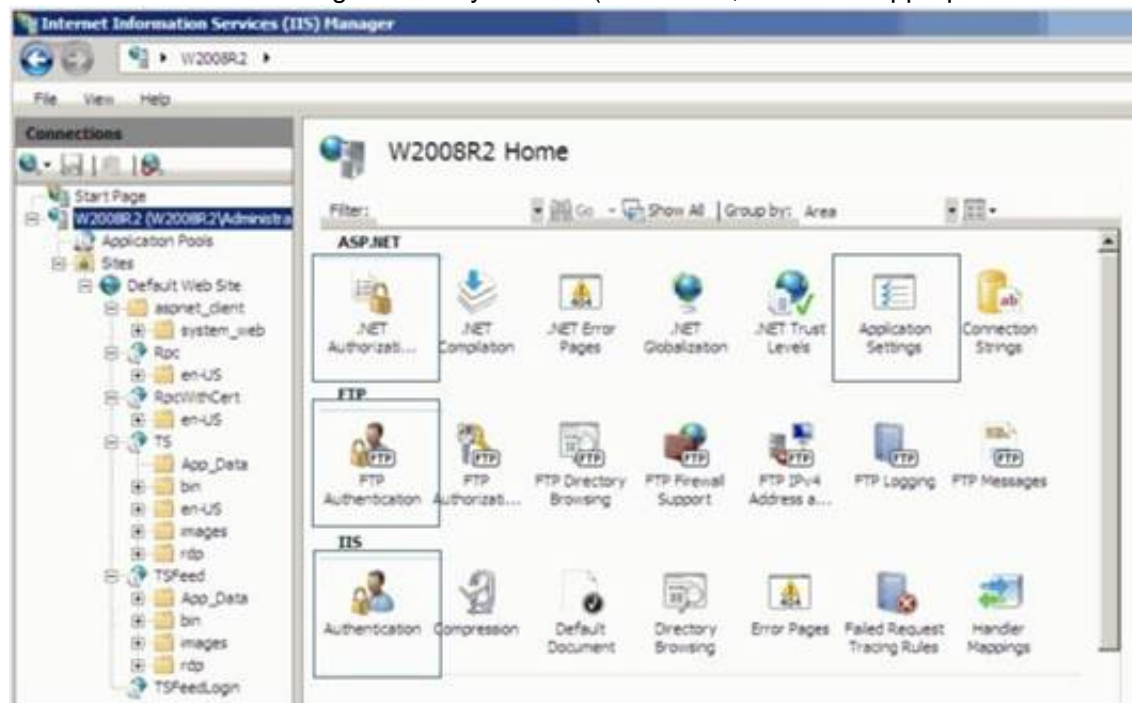
link. A check mark next to Enforced indicates that the link is enforced.

**NEW QUESTION 92****HOTSPOT**

You are configuring a web server for your school newspaper. The computer is running Windows Server 2008 R2 and Internet Information Services (OS).

You need to disable the ability for anonymous users to connect to the web server.

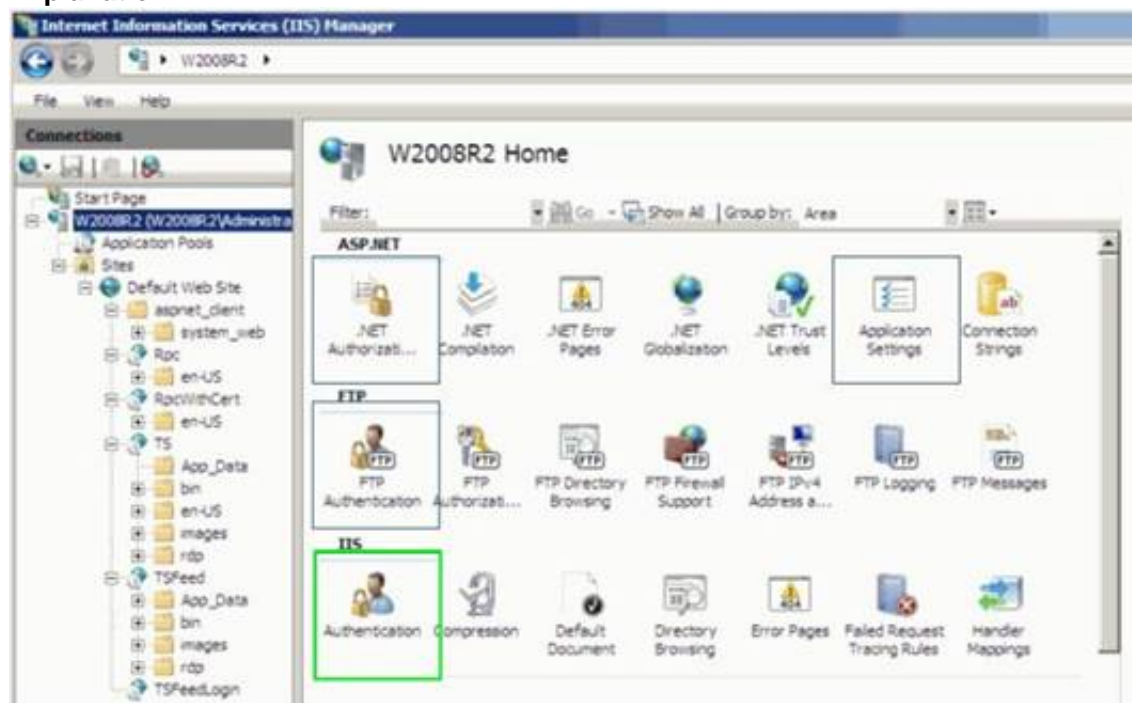
Which feature in IIS Manager should you use? (To answer, select the appropriate feature in the IIS Manager window in the answer area.)



A. Mastered

B. Not Mastered

**Answer: A**

**Explanation:****NEW QUESTION 96**

You need to manage your server remotely as if you were seated in front of it. Which tool should you use?

A. Remote Desktop Client

B. Remote Desktop Session Host

C. Remote Desktop Gateway

D. Remote Server Administration Tools

**Answer: D**

**Explanation:**

Example: Remote Server Administration Tools for Windows 8.1 enables IT administrators to manage roles and features that are installed on computers that are running Windows Server 2012 or Windows Server 2012 R2 from a remote computer that is running Windows 8.1 Pro or Windows 8.1 Enterprise.

**NEW QUESTION 100**

Which tool would you use to retrieve detailed information about a significant occurrence in a computer system?

- A. Event Viewer
- B. System Information
- C. System Monitor
- D. Resource Monitor

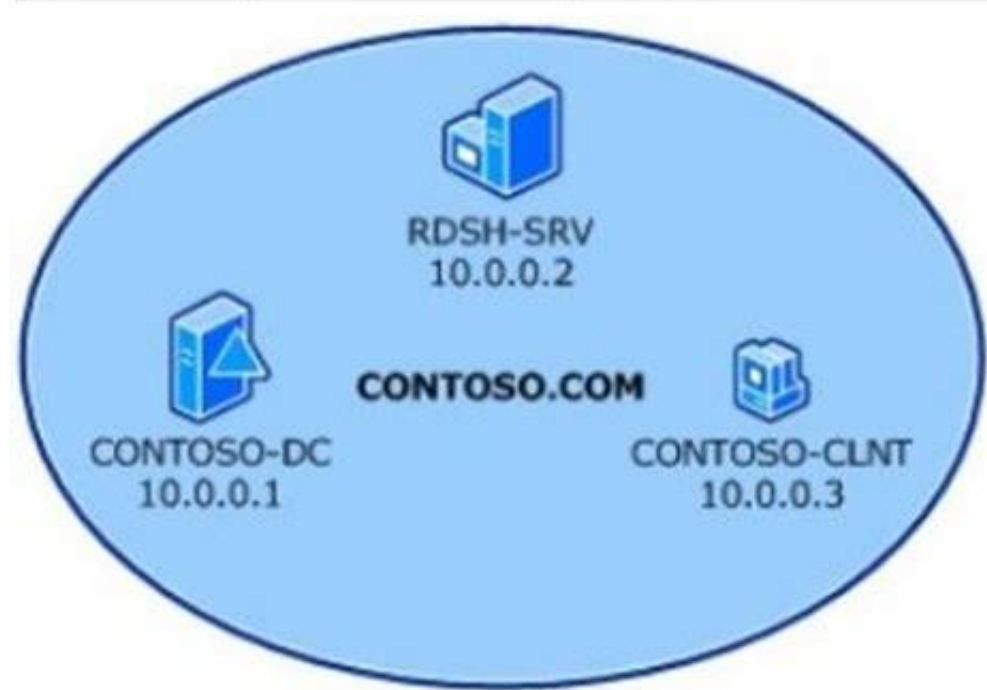
Answer: A

NEW QUESTION 104

HOTSPOT

You create a user account named user1 and an Active Directory Domain Services group named RDGroup in Active Directory Domain Services. The lab environment is shown in the following image:

Computer name	Operating system	Applications and services
RDSH-SRV	Windows Server 2008 R2	RD Session Host
CONTOSO-DC	Windows Server 2008 R2	Active Directory Domain Services, Domain Name System (DNS)
CONTOSO-CLNT	Windows® 7	Remote Desktop Connection



Use the drop-down menus to select the answer choice that completes each statement. Each correct selection is worth one point.

Answer Area

To enable only remote desktop access to the RDSH-SRV server for RDGroup, add RDGroup to the [answer choice] group on the host.

Remote Desktop Users  
Users  
Administrators

To enable restricted access to the RDSH-SRV server for user1, add user1 to the [answer choice] group in Active Directory.

RDGroup  
Users  
Administrators

- A. Mastered
- B. Not Mastered

Answer: A

Explanation:

Answer Area

To enable only remote desktop access to the RDSH-SRV server for RDGroup, add RDGroup to the [answer choice] group on the host.

Remote Desktop Users  
Users  
Administrators

To enable restricted access to the RDSH-SRV server for user1, add user1 to the [answer choice] group in Active Directory.

RDGroup  
Users  
Administrators

NEW QUESTION 107

Disk striping occurs when data is:

- A. Duplicated on separate disks
- B. Duplicated on the same disk
- C. Shared between disks
- D. Written across multiple disks

Answer: D

NEW QUESTION 108

Which should you use to manage the working environments of users and computers in an Active Directory infrastructure?

- A. Active Directory Domains and Trusts
- B. Group Policy Objects
- C. Builtin containers
- D. Global security groups

**Answer:** B

**Explanation:**

A Group Policy Object (GPO) is a collection of settings that define what a system will look like and how it will behave for a defined group of users or computers.

**NEW QUESTION 113**

Users report that they are unable to print. What should you do first?

- A. Verify that the Print Spooler Service is running.
- B. Pause the Print Spooler service.
- C. Restart the Print Spooler service.
- D. Disable the Print Spooler Service.

**Answer:** C

**Explanation:**

Try to restart the Print Spooler.

**NEW QUESTION 116**

You need to secure a server that you have been working on without disrupting the work of other employees in your company. What should you do?

- A. Log off the server
- B. Hibernate the server
- C. Restart the server
- D. Shut down the server

**Answer:** A

**NEW QUESTION 120**

You need to see what effect the applied group policies are having on an individual user or computer. What should you use?

- A. Local Users and Groups
- B. Resultant Set of Policy
- C. Local Security Policy
- D. Effective Permissions

**Answer:** D

**Explanation:**

If you would like to find out what permissions a user or group has on an object, you can use the Effective Permissions tool. It calculates the permissions that are granted to the specified user or group. The calculation takes the permissions in effect from group membership into account, as well as any permissions inherited from the parent object. It looks up all domain and local groups in which the user or group is a member.

**NEW QUESTION 121**

What is required for a computer to print to either a local or a network printer?

- A. 500 GB of free hard disk space
- B. Printer Device Drivers
- C. 1 GB of RAM
- D. Administration tools

**Answer:** B

**NEW QUESTION 126**

This question requires that you evaluate the underlined text to determine if it is correct. "Hardware-based RAID" uses system processing resources. Select the correct answer if the underlined text does not make the statement correct. Select "No change is needed" if the underlined text makes the statement correct.

- A. Windows-based RAID
- B. RAID 10
- C. RAID 6
- D. No change is needed.

**Answer:** A

**NEW QUESTION 129**

You create a new domain. Which two Active Directory objects will be available by default? (Choose two)



- A. Computer
- B. Employee
- C. User
- D. Device
- E. Server

**Answer:** AC

**Explanation:**

An Active Directory structure is an arrangement of information about objects. The objects fall into two broad categories: resources (e.g., printers) and security principals (user or computer accounts and groups). Security principals are assigned unique security identifiers (SIDs).

Note:

\* Install-ADDSDomain

Installs a new Active Directory domain configuration.

**NEW QUESTION 131**

What must you install in order to host a Web site on a Windows Server?

- A. Active Directory Sites and Services
- B. Windows Internet Naming Service (WINS)
- C. Fully Qualified Domain Name (FQDN)
- D. Internet Information Server (IIS)

**Answer:** D

**NEW QUESTION 135**

A record of specific aspects of system performance over time is referred to as a/an:

- A. Threshold
- B. Log
- C. Event
- D. Alert

**Answer:** B

**Explanation:**

Working with Performance Logs

Applies To: Windows 7, Windows Server 2008 R2, Windows Server 2012, Windows Vista You can view log files or log data provided by a database in Performance Monitor to see a visual representation of performance data collected by Data Collector Sets.

**NEW QUESTION 137**

You need to install storage device drivers for a Windows boot partition. When should you do this?

- A. After you have started Windows for the first time
- B. Before creation of the RAID array
- C. During the post-boot phase
- D. During the installation phase

**Answer:** D

**Explanation:**

Example:

During the first phase of the Windows XP installation, Setup displays the following message at the bottom of the screen:

Press F6 if you have to install a third-party SCSI or RAID driver.

Press F6 and then follow the instructions to install a mass-storage device driver from your Original Equipment Manufacturer (OEM).

**NEW QUESTION 142**

Your network includes Windows Server 2003 and Windows Server 2008 domain controllers. You need to ensure that group policy change are applied immediately. Which tool should you use on the client computer?

- A. Groupware
- B. Windows update
- C. GPUpdate
- D. Policy Editor

**Answer:** C

**Explanation:**

GPUpdate

Refreshes local and Active Directory-based Group Policy settings, including security settings.

**NEW QUESTION 144**

Enabling additional users to handle administrative tasks for a particular object is referred to as:

- A. Redirection
- B. Assignment
- C. Targeting



D. Delegation

Answer: D

Explanation:

In computing Delegation of Control is assigning a person or group specific administrative permissions for an Organizational Unit.

NEW QUESTION 146

Which technology uses digital certificates for secure communications over the Internet?

- A. Fully Qualified Domain Name (FQDN)
- B. Internet Service Manager (ISM)
- C. Secure Sockets Layer (SSL)
- D. File Transfer Protocol (FTP)

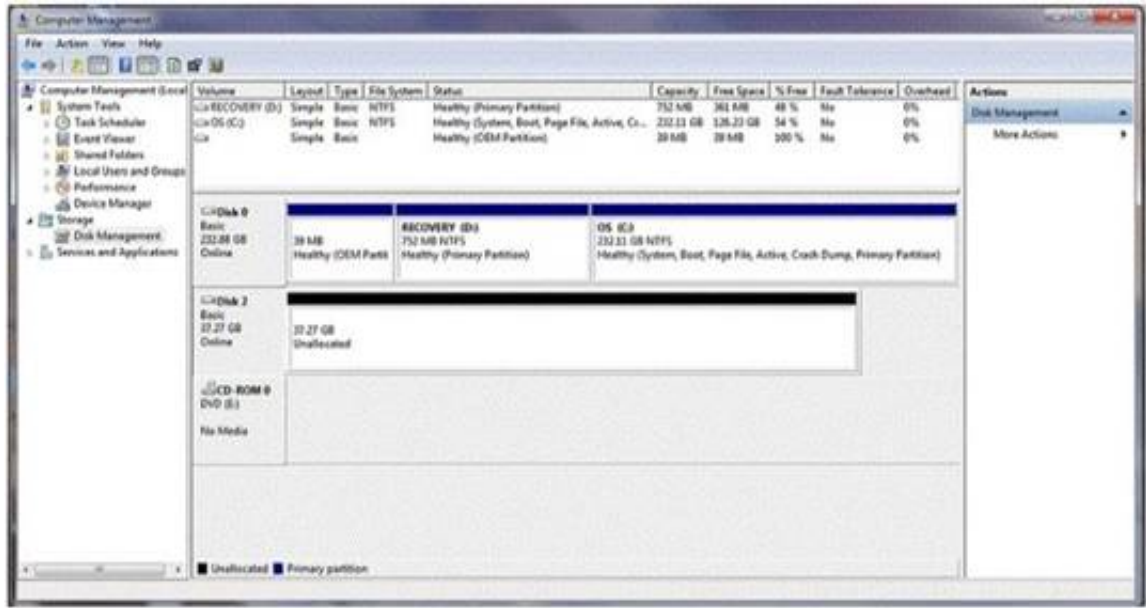
Answer: C

NEW QUESTION 149

HOTSPOT

You buy a new USB hard drive for your server. After connecting the drive, you need to make this drive available to Windows.

In Computer Management Disk Management you see the drive, but it is not visible in Explorer's Computer view, as shown in the following image:



Use the drop-down menus to select the answer choice that completes each statement. Each correct selection is worth one point.

Answer Area

You should create a [answer choice] volume on Disk 2.

simple  
spanned  
striped

You should format Disk 2 as [answer choice] to support compression.

exFAT  
FAT32  
NTFS

- A. Mastered
- B. Not Mastered

Answer: A

Explanation:

Answer Area

You should create a [answer choice] volume on Disk 2.

simple  
spanned  
striped

You should format Disk 2 as [answer choice] to support compression.

exFAT  
FAT32  
NTFS

NEW QUESTION 150

Which should you use to monitor server performance and resource utilization?

- A. Memory
- B. Counters
- C. Boot logs

D. RAM

**Answer:** B

**Explanation:**

Performance Counters, Purpose

Counters are used to provide information as to how well the operating system or an application, service, or driver is performing. The counter data can help determine system bottlenecks and fine-tune system and application performance. The operating system, network, and devices provide counter data that an application can consume to provide users with a graphical view of how well the system is performing.

**NEW QUESTION 152**

This question requires that you evaluate the underlined text to determine if it is correct.

The default security permission assigned to Everyone when a new share is created is "change".

Select the correct answer if the underlined text does not make the statement correct. Select "No change is needed" if the underlined text makes the statement correct.

- A. Read
- B. Full control
- C. None
- D. No change is needed.

**Answer:** A

**NEW QUESTION 157**

You manage a company's Active Directory. You need to delegate the control of a branch office to a set of administrators. Where would you place the users and computers that belong to the branch office?

- A. In a distribution group
- B. In an Organizational Unit
- C. In the root of the domain
- D. In the Built-in container

**Answer:** B

**NEW QUESTION 160**

What should you use to prevent power spikes from harming a server?

- A. Power supply unit
- B. Hot-swappable power supply
- C. Dedicated surge protector
- D. Line conditioner

**Answer:** C

**Explanation:**

Dedicated surge protectors protect specific items, such as servers, from surges.

A surge occurs when too much electricity (technically too much voltage) flows through to the item.

Reference: <http://romitti.com/2015/02/dedicated-surge-protectors/>

**NEW QUESTION 162**

You need to automate the installation of Windows Server 2008 on several servers. What should you use?

- A. unattendinstall.exe
- B. Microsoft Software Installer (MSI)
- C. Windows Installer Service
- D. Windows Deployment Services (WDS)

**Answer:** D

**Explanation:**

Windows Deployment Services is the updated and redesigned version of Remote Installation Services (RIS). Windows Deployment Services enables you to deploy Windows operating systems over the network, which means that you do not have to install each operating system directly from a CD or DVD.

**NEW QUESTION 165**

What is the default port for HTTPS?

- A. 21
- B. 80
- C. 135
- D. 443

**Answer:** D

**Explanation:**

43, TCP, Hypertext Transfer Protocol over TLS/SSL (HTTPS)

**NEW QUESTION 170**

DRAG DROP

In which order are group policies applied?

(To answer, move the appropriate scopes from the list of scopes to the answer area and arrange them from first applied to last applied)

Scopes	Answer Area
Domain	
Local	
Organizational Unit	
Site	

- A. Mastered
- B. Not Mastered

**Answer:** A

**Explanation:**

Scopes	Answer Area
Domain	Local
Local	Site
Organizational Unit	Domain
Site	Organizational Unit

**NEW QUESTION 171**

You configure Volume Shadow Copy Service (VSS) to save previous versions of a shared folder. By default, the copies of shared folders are stored in:

- A. A Network Attached Storage (NAS) device.
- B. A Distributed File System (DFS) share.
- C. A failover cluster.
- D. A local volume.

**Answer:** D

**Explanation:**

Shadow Copy technology requires the file system to be NTFS to be able to create and store shadow copies. Shadow Copies can be created on local and external (removable or network) volumes by any Windows component that uses this technology, such as when creating a scheduled Windows Backup or automatic System Restore point.

**NEW QUESTION 176**

Which two locations can a Windows Server be backed up to? (Choose two)

- A. Network router
- B. Local drive
- C. Local DFS root share
- D. Remote share folder

**Answer:** BD

**NEW QUESTION 181**

What is the default location for a new user account in Active Directory?

- A. The Users Organizational Unit
- B. The Accounts container
- C. The Accounts Organizational Unit
- D. The Users container

**Answer:** D

**Explanation:**

In a default installation of an Active Directory domain, user accounts, computer accounts, and groups are put in CN=objectclass containers instead of being put in a more desirable organizational unit class container. Similarly, user accounts, computer accounts, and groups that were created by using earlier-version APIs are put in the CN=Users and CN=computers containers.

**NEW QUESTION 183**

.....

## Thank You for Trying Our Product

\* 100% Pass or Money Back

All our products come with a 90-day Money Back Guarantee.

\* One year free update

You can enjoy free update one year. 24x7 online support.

\* Trusted by Millions

We currently serve more than 30,000,000 customers.

\* Shop Securely

All transactions are protected by VeriSign!

**100% Pass Your 98-365 Exam with Our Prep Materials Via below:**

<https://www.certleader.com/98-365-dumps.html>