

## Exam Questions 010-151

Cisco Certified Technician (CCT) for Data Center

<https://www.2passeasy.com/dumps/010-151/>



#### NEW QUESTION 1

Which method is a TCP/IP-based protocol for establishing and managing connections between IP-based storage devices, hosts, and clients?

- A. FCIP
- B. iFCP
- C. iSCSI
- D. FCoE

**Answer:** C

#### NEW QUESTION 2

Which two statements about the Ethernet media are true? (Choose two.)

- A. A twisted-pair cable system has each pair of wires twisted together to reduce electromagnetic interferenc
- B. Compared to multimode fiber, the single-mode fiber is designed for shorter distances with higher cos
- C. 40 Gigabit Ethernet twinax cables deploy Enhanced Quad Small Form Factor Pluggable (QSFP+) connector
- D. The twinax cables can be found in either a shielded twisted-pair or an unshielded twisted-pair variatio

**Answer:** AC

#### NEW QUESTION 3

Which two statements about PCIe are true? (Choose two.)

- A. The PCIe link is built around dedicated unidirectional couples of serial, point-to-point connections known as lane
- B. You can install a PCI Express x8 adapter into an x4 slo
- C. The PCIe standard is a bus-based system in which all the devices share the same bidirectional, 32-bit or 64-bit, parallel signal pat
- D. The PCIe 1.0 standard doubles the transfer rate compared to PCIe 2.0.
- E. A link that is composed of four lanes is called an x4 lin

**Answer:** AE

#### NEW QUESTION 4

What does the system status LED look like when an over temperature or major alarm occurs on the Cisco UCS 6120XP Fabric Interconnect?

- A. Amber
- B. Red
- C. Blinking amber
- D. Blinking red

**Answer:** C

#### NEW QUESTION 5

Which Cisco MDS model supports the most Fibre Channel ports per chassis?

- A. MDS 9513
- B. MDS 9509
- C. MDS 9506
- D. MDS 9250i

**Answer:** A

#### NEW QUESTION 6

Refer to the exhibit.



Which Cisco MDS chassis supports the 48-Port 16-Gbps Fibre Channel Switching Module?

- A. MDS 9509
- B. MDS 9513
- C. MDS 9710
- D. MDS 9506

**Answer:** C

#### NEW QUESTION 7

Which command-line interface mode is best described by this prompt?

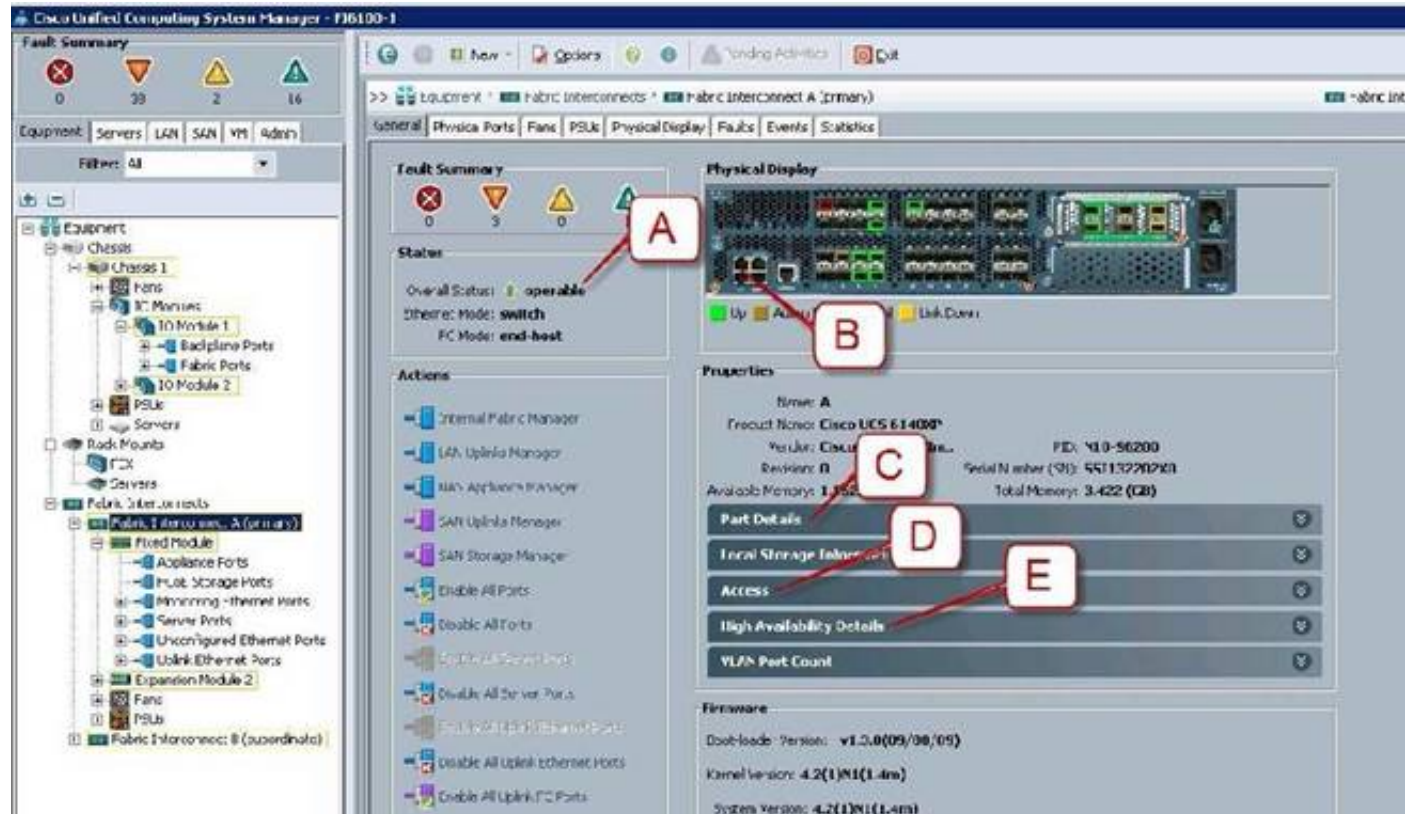
UCS-switch-A (nxos)#

- A. maintenance mode
- B. EXEC mode
- C. local management mode
- D. global configuration mode
- E. Cisco IOS mode

Answer: B

### NEW QUESTION 8

Refer to the exhibit.



Where is the best place to see whether the system is ready for a Fabric Interconnect failover?

- A. A - Overall Status operable
- B. B - L1 Connection
- C. C - Part Details
- D. D - Access
- E. E - High Availability Details

Answer: E

### NEW QUESTION 9

Which command syntax is correct to reset the admin password when the switch is in the kickstart prompt "switch(boot) #"?

- A. exec -> admin-password <password>
- B. connect local-mgmt -> admin-password <password>
- C. configure terminal -> admin-password <password>
- D. connect nxos -> admin-password <password>
- E. admin-password <password>

Answer: C

### NEW QUESTION 10

Which three options are the minimum browser requirements to log into the Cisco CIMC GUI? (Choose three.)

- A. Java 1.6 or higher
- B. HTTP and HTTPS enabled
- C. Adobe Flash Player 10 or higher
- D. Internet Explorer version 10
- E. Firefox 26.0
- F. Adobe Shockwave Player 11 or higher

Answer: ABC

### NEW QUESTION 10

Which tool does a network administrator not need when installing hardware?

- A. cable tester
- B. wrench set
- C. cable wraps
- D. needle-nose pliers
- E. PCMCIA memory
- F. soldering iron with grounded tip

Answer: F

#### NEW QUESTION 13

What is the correct path to verify the Overall Status of Chassis 1 | Server 3?

- A. Equipment Tab > Chassis > Chassis 1 > Servers > Server 3 Status tab
- B. Equipment Tab > Chassis > Chassis 1 > Servers > Server 3 General tab
- C. Equipment Tab > Chassis > Chassis 1 > Servers > Server 3 FSM tab
- D. Servers Tab > Chassis > Server 3 General tab
- E. Status Tab > Chassis > Chassis 1 > Servers > Server 3
- F. Admin Tab > Chassis > Chassis 1 > Servers > Server 3 General tab

Answer: B

#### NEW QUESTION 16

Which two statements about DIMM replacement in Cisco UCS Servers are true? (Choose two.)

- A. In blade servers, DIMMs can be installed in either 1, 2, 4, or 8 DIMMs per channe
- B. Rack-mount and blade servers have memory fault LEDs that indicate which DIMM requires attentio
- C. In servers that require pairs of DIMMs, the pairs must be identical (manufacturer, size, part #, and so on).
- D. If the memory in a server is not fully populated, you can install DIMMs in any open slo

Answer: AC

#### NEW QUESTION 20

Which two remote file system methods are used in the training material to transfer firmware to the Fabric Interconnect? (Choose two.)

- A. FTPS
- B. FTP
- C. TFTP
- D. RSH

Answer: BC

#### NEW QUESTION 22

What is the maximum distance that the 40GBASE-LR4 Ethernet standard can span?

- A. 550 m
- B. 10 km
- C. 40 km
- D. 80 km

Answer: B

#### NEW QUESTION 23

.....

## THANKS FOR TRYING THE DEMO OF OUR PRODUCT

Visit Our Site to Purchase the Full Set of Actual 010-151 Exam Questions With Answers.

We Also Provide Practice Exam Software That Simulates Real Exam Environment And Has Many Self-Assessment Features. Order the 010-151 Product From:

<https://www.2passeasy.com/dumps/010-151/>

## Money Back Guarantee

### 010-151 Practice Exam Features:

- \* 010-151 Questions and Answers Updated Frequently
- \* 010-151 Practice Questions Verified by Expert Senior Certified Staff
- \* 010-151 Most Realistic Questions that Guarantee you a Pass on Your FirstTry
- \* 010-151 Practice Test Questions in Multiple Choice Formats and Updatesfor 1 Year