



**Cisco**

## **Exam Questions 350-901**

Developing Applications using Cisco Core Platforms & APIs

#### NEW QUESTION 1

An organization manages a large cloud-deployed application that employs a microservices architecture. No notable issues occur with downtime because the services of this application are redundantly deployed over three or more data center regions. However, several times a week reports are received about application slowness. The container orchestration logs show faults in a variety of containers that cause them to fail and then spin up brand new. Which action must be taken to improve the resiliency design of the application while maintaining current scale?

- A. Update the base image of the containers.
- B. Test the execution of the application with another cloud services platform.
- C. Increase the number of containers running per service.
- D. Add consistent "try/catch(exception)" clauses to the code.

**Answer: D**

#### NEW QUESTION 2

Which two situations are flagged by software tools designed for dependency checking in continuous integration environments, such as OWASP? (Choose two.)

- A. publicly disclosed vulnerabilities related to the included dependencies
- B. mismatches in coding styles and conventions in the included dependencies
- C. incompatible licenses in the included dependencies
- D. test case failures introduced by bugs in the included dependencies
- E. buffer overflows to occur as the result of a combination of the included dependencies

**Answer: AE**

#### NEW QUESTION 3

A network operations team is using the cloud to automate some of their managed customer and branch locations. They require that all of their tooling be ephemeral by design and that the entire automation environment can be recreated without manual commands. Automation code and configuration state will be stored in git for change control and versioning. The engineering high-level plan is to use VMs in a cloud-provider environment then configure open source tooling onto these VMs to poll, test, and configure the remote devices, as well as deploy the tooling itself. Which configuration management and/or automation tooling is needed for this solution?

- A. Ansible
- B. Ansible and Terraform
- C. NSO
- D. Terraform
- E. Ansible and NSO

**Answer: B**

#### NEW QUESTION 4

Which statement about microservices architecture is true?

- A. Applications are written in a single unit.
- B. It is a complex application composed of multiple independent parts.
- C. It is often a challenge to scale individual parts.
- D. A single faulty service can bring the whole application down.

**Answer: B**

#### NEW QUESTION 5

DRAG DROP

Drag and drop the characteristics from the left onto the correct data processing techniques on the right, in the context of GDPR. Select and Place:

#### Answer Area

- processing of personal data in such a manner that the personal data can no longer be attributed to a specific data subject without the use of additional information
- data stripped of sufficient elements such that the data subject can no longer be identified
- can be re-identified
- cannot be re-identified

Data anonymization

Data pseudonymization

- A. Mastered
- B. Not Mastered

Answer: A

Explanation:

Answer Area

processing of personal data in such a manner that the personal data can no longer be attributed to a specific data subject without the use of additional information

data stripped of sufficient elements such that the data subject can no longer be identified

can be re-identified

cannot be re-identified

Data anonymization

can be re-identified

data stripped of sufficient elements such that the data subject can no longer be identified

Data pseudonymization

cannot be re-identified

processing of personal data in such a manner that the personal data can no longer be attributed to a specific data subject without the use of additional information

NEW QUESTION 6

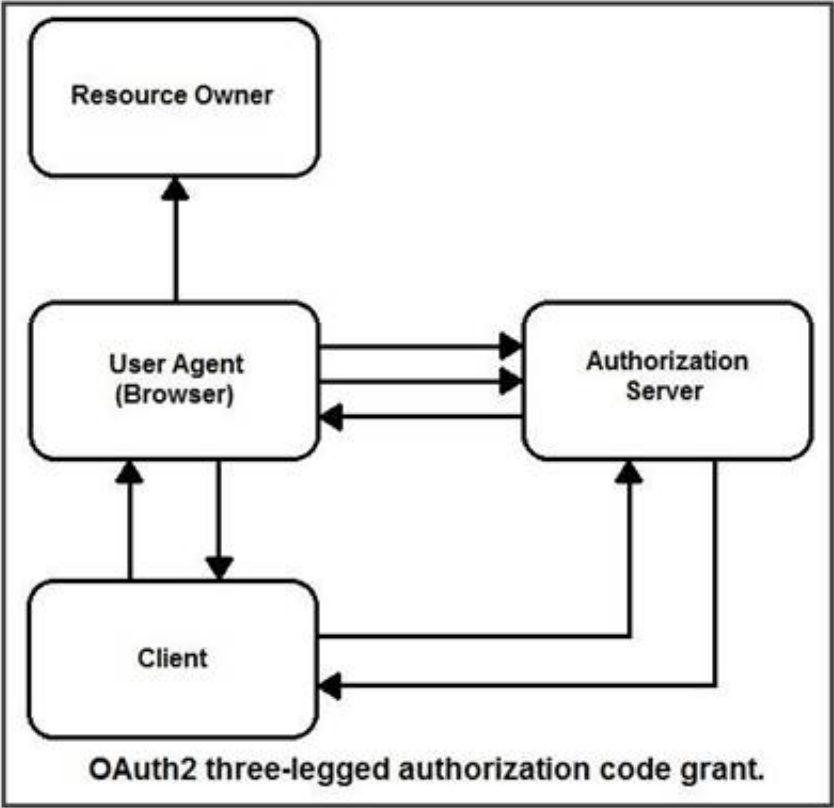
Which transport protocol is used by gNMI?

- A. HTTP/2
- B. HTTP 1.1
- C. SSH
- D. MQTT

Answer: A

NEW QUESTION 7

DRAG DROP



Refer to the exhibit. Drag and drop the steps from the left into the correct order of operation on the right for a successful OAuth2 three-legged authorization code grant flow.

Select and Place:

Answer Area

Client initiates the flow.

The authorization server authenticates the client, validates details sent, and responds with an access token.

The authorization server redirects the user-agent back to the client using the redirection URI provided.

The authorization server authenticates the resource owner.

The client requests an access token from the authorization server's token endpoint.

step 1

step 2

step 3

step 4

step 5

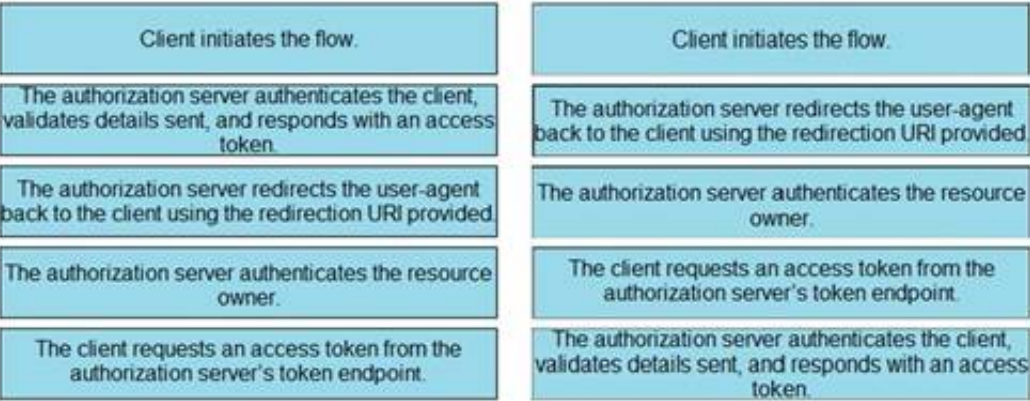
A. Mastered

B. Not Mastered

Answer: A

Explanation:

Answer Area



NEW QUESTION 8

Which two methods are API security best practices? (Choose two.)

- A. Use tokens after the identity of a client has been established.
- B. Use the same operating system throughout the infrastructure.
- C. Use encryption and signatures to secure data.
- D. Use basic auth credentials over all internal API interactions.
- E. Use cloud hosting services to manage security configuration.

Answer: AC

NEW QUESTION 9

A developer has completed the implementation of a REST API, but when it is executed, it returns a 401 error message. What must be done on the API to resolve the issue?

- A. Access permission to the resource must be granted, before the request.
- B. Configure new valid credentials.
- C. The requested API endpoint does not exist, and the request URL must be changed.
- D. Additional permission must be granted before the request can submitted.

Answer: D

NEW QUESTION 10

**Paginating the Results**

By adding the `page-size` operator to the query URI you can divide the query results into groups (pages) of objects using the following syntax. The operand specifies the number of objects in each group.

`page-size = number-of-objects-per-page`

By adding the `page` operator in the query URI, you can specify a single group to be returned using the following syntax. The pages start from number 0.

`page = page-number`

This example shows you how to specify 15 fault instances per page in descending order, returning only the first page:

Refer to the exhibit. Many faults have occurred in the ACI environment and a sample of them needs to be examined. Which API call retrieves faults 30 through 45?

- A. GET <https://apic-ip-address/api/class/faultInfo.json?order-by=faultinst.severity|desc&page=1&page-size=15>
- B. GET <https://apic-ip-address/api/class/faultInfo.json?order-by=faultinst.severity|desc&page=2&page-size=15>
- C. GET <https://apic-ip-address/api/class/faultInfo.json?order-by=faultinst.severity|desc&page=30>
- D. GET <https://apic-ip-address/api/class/faultInfo.json?order-by=faultinst.severity|desc&page=2&page-size=30>

Answer: D

NEW QUESTION 10

User report that they can no longer process transactions with the online ordering application, and the logging dashboard is displaying these messages.  
Fri Jan 10 19:37:31.123 EST 2020 [FRONTEND] INFO: Incoming request to add item to cart from user 45834534858  
Fri Jan 10 19:37:31 247 EST 2020 [BACKEND] INFO: Attempting to add item to cart  
Fri Jan 10 19:37:31 250 EST 2020 [BACKEND] ERROR: Failed to add item: MYSQLDB ERROR: Connection refused  
What is causing the problem seen in these log messages?

- A. The database server container has crashed.



- B. The backend process is overwhelmed with too many transactions.
- C. The backend is not authorized to commit to the database.
- D. The user is not authorized to add the item to their cart.

Answer: A

#### NEW QUESTION 14

\$filter { string }	query
<p>Filter criteria for documents to return. A URI with a \$filter System Query Option identifies a subset of the Entries from the Collection of Entries identified by the Resource Path section of the URI. The subset is determined by selecting only the Entries that satisfy the predicate expression specified by the query option. The expression language that is used in \$filter operators supports references to properties and literals. The literal values can be strings enclosed in single quotes, numbers and boolean values (true or false) or any of the additional literal representations shown in the Abstract Type System section. Query examples: \$filter=Name eq 'Bob' \$filter=Tags/any(t: t/Key eq 'Site') \$filter=Tags/any(t: t/Key eq 'Site' and t/Value eq 'London')</p>	
<p>GET /api/v1/compute/RackUnits?\$filter=Tags/any (t:t/Key eq 'Site')</p>	

Refer to the exhibit. An Intersight API is being used to query RackUnit resources that have a tag keyword set to "Site". What is the expected output of this command?

- A. list of all resources that have a tag with the keyword "Site"
- B. error message because the Value field was not specified
- C. error message because the tag filter should be lowercase
- D. list of all sites that contain RackUnit tagged compute resources

Answer: A

#### NEW QUESTION 19

```
import request
import json

meraki_api_key = "<api key>"
url =
"https://api.meraki.com/api/v0/organizations/1234567890/devices"
headers = {
    "X-Cisco-Meraki-API-Key": meraki_api_key,
}
params = {
    "perPage": 3
}
res = requests.get(url, headers=headers, params=params)
formatted_message = """
Meraki Dashboard API Response
-----
Response Status Code : {}
Response Link Header : {}
Response Body         : {}
-----
""".format(res.status_code, res.headers.get('Link'),
json.dumps(res.json(), indent=4))
print(formatted_message)
```

```
<https://n6.meraki.com/api/v0/organizations/1234567890/devices?perPage=
3&startingAfter=0000-0000-0000>; rel=first,
<https://n6.meraki.com/api/v0/organizations/1234567890/devices?perPage=
3&startingAfter=Q2EK-3UBE-RRUY>; rel=next,
<https://n6.meraki.com/api/v0/organizations/1234567890/devices?
endingBefore=zzzz-zzzz-zzzz&perPage=3>; rel=last
```

Refer to the exhibit. Which line of code must be added to this code snippet to allow an application to pull the next set of paginated items?

- A. requests.get(url, links=['next']['url'])
- B. requests.get(url, headers=links['next']['url'])
- C. requests.get(res.links['next']['url'], headers=headers)
- D. requests.get(res.headers.get('Link')['next']['url'], headers=headers)

Answer: C

#### NEW QUESTION 24

Which RFC5988 (Web Linking) relation type is used in the Link header to control pagination in APIs?

- A. rel="index"
- B. rel="page"
- C. rel="next"
- D. rel="section"

Answer: C

#### NEW QUESTION 29

```
response = requests.get(url)
if response.status_code != 200:
    error_message = "Unexpected HTTP Response code: {}".format(response.status_code)
    raise Exception(error_message)
data = response.json()
```

Refer to the exhibit. This snippet of a script has recently started exiting abnormally with an exception stating "Unexpected HTTP Response code: 429". Which solution handles rate limiting by the remote API?

- A.
- ```
response = requests.get(url)
if response.status_code == 429:
    backoff_seconds = int(response.headers['Retry-After'])
    sleep(backoff_seconds)
elif response.status_code != 200:
    error_message = "Unexpected HTTP Response code: {}".format(response.status_code)
    raise Exception(error_message)
data = response.json()
```
- B.
- ```
response = requests.get(url)
if response.status_code != 200 and response.status_code != 429:
    error_message = "Unexpected HTTP Response code: {}".format(response.status_code)
    raise Exception(error_message)
data = response.json()
```
- C.
- ```
response = requests.get(url)
if response.status_code != 200 and response.status_code != 429:
    backoff_seconds = int(response.headers['Retry-After'])
    sleep(backoff_seconds)
    error_message = "Unexpected HTTP Response code: {}".format(response.status_code)
    raise Exception(error_message)
data = response.json()
```
- D.
- ```
response = requests.get(url)
if response.status_code == 429:
    backoff_seconds = int(response.headers['Retry-After'])
    sleep(backoff_seconds)
    response = requests.get(url)
elif response.status_code != 200:
    error_message = "Unexpected HTTP Response code: {}".format(response.status_code)
    raise Exception(error_message)
data = response.json()
```

Answer: D

#### NEW QUESTION 32

An application uses OAuth to get access to several API resources on behalf of an end user. What are two valid parameters to send to the authorization server as part of the first step of an authorization code grant flow? (Choose two.)

- A. URI to which the authorization server will send the user-agent back when access is granted or denied
- B. list of the API resources that the application is requesting to access
- C. secret that was generated by the authorization server when the application registered as an OAuth integration
- D. list of scopes that correspond to the API resources to which the application is requesting to access
- E. name of the application under which the application registered as an OAuth integration

Answer: AC

#### NEW QUESTION 37

Refer to the exhibit. Which set of API requests must be executed by a Webex Teams bot after receiving a webhook callback to process messages in a room and reply with a new message back to the same room?

- A. **GET /message&roomId=<ROOM\_ID>**
- POST /messages**  
 { "roomId": "<ROOM\_ID>", "text": "<MESSAGE>" }



B. **GET /messages&mentionedPeople=me&roomId=<ROOM\_ID>**

```
PUT /messages
{ "roomId : "<ROOM_ID>" , "text" :<MESSAGE>"}
```

C. **GET /message&roomId=<ROOM\_ID>**

```
PUT /messages
{ "roomId : "<ROOM_ID>" , "text" :<MESSAGE>"}
```

D. **GET /messages&mentionedPeople=me&roomId=<ROOM\_ID>**

```
POST /messages
{ "roomId : "<ROOM_ID>" , "text" :<MESSAGE>"}
```

**Answer:** B

#### NEW QUESTION 42

The UCS Python SDK includes modules for Service Profile template creation. Which two UCS Service Profile template types are supported? (Choose two.)

- A. initial-template
- B. updating-template
- C. abstract-template
- D. attached-template
- E. base-template

**Answer:** AB

#### NEW QUESTION 47

Click on the GET Resource button above to view resources that will help with this question.

An engineer is managing a DC with 6000 Cisco UCS servers installed and running. The engineer has been asked to identify all resources where the model is in the UCSB family and the available memory is less than or equal to 5 GB.

Which REST API call accomplishes this task?

- A. GET/api/v1/compute/RackUnits?\$select=Vendor,Model,Serial&\$filter=not(Model eq 'UCSC') and AvailableMemory le 5000
- B. GET/api/v1/compute/RackUnits?\$select=Vendor,Model,Serial&\$filter=Model eq 'UCSB' and AvailableMemory lt 5000
- C. GET/api/v1/compute/RackUnits?\$select=Vendor,Model,Serial&\$filter=contains(Model, UCSB') and AvailableMemory lt 5000
- D. GET/api/v1/compute/RackUnits?\$select=Vendor,Model,Serial&\$filter=contains(Model, UCSB') and AvailableMemory le 5000

**Answer:** D

#### NEW QUESTION 50

On a Cisco Catalyst 9300 Series Switch, the guest shell is being used to create a service within a container. Which change is needed to allow the service to have external access?

- A. Apply ip nat overload on VirtualPortGroup0.
- B. Apply ip nat inside on Interface VirtualPortGroup0.
- C. Apply ip nat outside on Interface VirtualPortGroup0.
- D. Apply ip nat inside on Interface GigabitEthernet1.

**Answer:** B

#### NEW QUESTION 53

Into which two areas are AppDynamics APIs categorized? (Choose two.)

- A. application-centric
- B. analytics-events
- C. database-visibility
- D. platform-side
- E. agent-side

**Answer:** DE

#### NEW QUESTION 56

```
node 'default' {
  cisco_yang_netconf { 'my-config':
    target => '<vrf xmlns='http://cisco.com/ns/yang/Cisco-IOS-XR-infra-rsi-cfg'>',
    source => '<vrf xmlns='http://cisco.com/ns/yang/Cisco-IOS-XR-infra-rsi-cfg'>
      <vrf>
        <vrf-name>VOIP</vrf-name>
        <create/>
        <description>Voice over IP</description>
        <vpn-id>
          <vpn-oui>875</vpn-oui>
          <vpn-index>3</vpn-index>
        </vpn-id>
      </vrf>
      <vrf>
        <vrf-name>INTERNET</vrf-name>
        <create/>
        <description>Generic external traffic</description>
        <vpn-id>
          <vpn-oui>875</vpn-oui>
          <vpn-index>22</vpn-index>
        </vpn-id>
      </vrf>
    </vrf>
  }
  mode => ,
  force => ,
}
```

Refer to the exhibit. This script uses ciscoyang to configure two VRF instances on a Cisco IOS-XR device using the Yang NETCONF type. Which two words are required to complete the script? (Choose two.)

- A. ensure
- B. commit
- C. false
- D. replace
- E. none

**Answer:** CD

#### NEW QUESTION 58

There is a requirement to securely store unique usernames and passwords. Given a valid username, it is also required to validate that the password provided is correct. Which action accomplishes this task?

- A. Encrypt the username, hash the password, and store these values.
- B. Hash the username, hash the password, and store these values.
- C. Encrypt the username, encrypt the password, and store these values.
- D. Hash the username, encrypt the password, and store these values.

**Answer:** A

#### NEW QUESTION 61

An application has initiated an OAuth authorization code grant flow to get access to an API resource on behalf of an end user. Which two parameters are specified in the HTTP request coming back to the application as the end user grants access? (Choose two.)

- A. access token and a refresh token with respective expiration times to access the API resource
- B. access token and expiration time to access the API resource
- C. redirect URI a panel that shows the list of permissions to grant
- D. code that can be exchanged for an access token
- E. state can be used for correlation and security checks

**Answer:** AB

#### NEW QUESTION 62

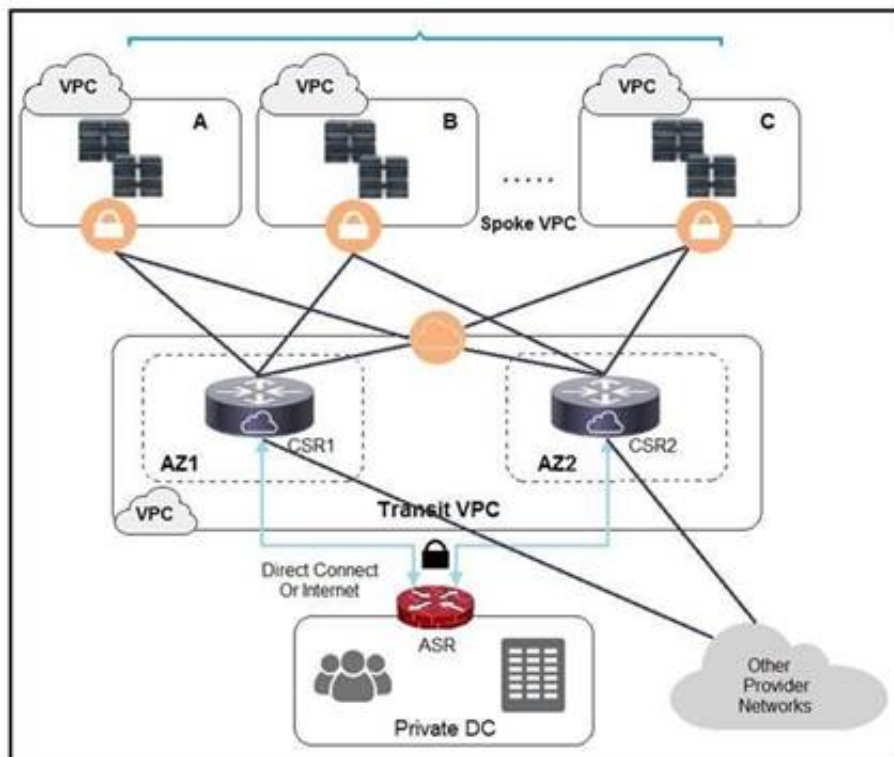
A web application is susceptible to cross-site scripting. Which two methods allow this issue to be mitigated? (Choose two.)

- A. Use only drop downs.
- B. Limit user input to acceptable characters.
- C. Encrypt user input on the client side.
- D. Use AES encryption to secure the script.
- E. Remove all HTML/XML tags from user input.

**Answer:** BD

#### NEW QUESTION 63





Refer to the exhibit. A company has extended networking from the data center to the cloud through Transit VPC. Which two statements describe the benefits of this approach? (Choose two.)

- A. Dynamic routing combined with multi-AZ- deployment creates a robust network infrastructure.
- B. VPC virtual gateways provide highly available connections to virtual networks.
- C. Dedicated VPC simplifies load balancing by combining internal and external web services.
- D. VPC virtual gateways provide more secure connections to virtual networks.
- E. Dedicated VPC simplifies routing by not combining this service with other shared services.

**Answer:** BD

#### NEW QUESTION 67

What is submitted when an SSL certificate is requested?

- A. PEM
- B. CRT
- C. DER
- D. CSR

**Answer:** D

#### NEW QUESTION 68

Which tow actions must be taken when an observable microservice application is developed? (Choose two.)

- A. Know the state of a single instance of a single service.
- B. Place "try/except" statement in code.
- C. Place log statements in the code.
- D. Use distributed tracing techniques.
- E. Deploy microservice to multiple datacenters.

**Answer:** BC

#### NEW QUESTION 69

Which two techniques protect against injection attacks? (Choose two.)

- A. input validation
- B. trim whitespace
- C. limit text areas to 255 characters
- D. string escaping of user free text and data entry
- E. only use dropdown, checkbox, and radio button fields

**Answer:** AE

#### NEW QUESTION 74

```
apiVersion: v1
clusters:
- cluster:
  certificate-authority: fake-ca-file
  server: https://1.2.3.4
  name: development
- cluster:
  insecure-skip-tls-verify: true
  server: https://5.6.7.8
  name: scratch
contexts:
- context:
  cluster: development
  namespace: frontend
  user: developer
  name: dev-frontend
- context:
  cluster: development
  namespace: storage
  user: developer
  name: dev-storage
- context:
  cluster: scratch
  namespace: default
  user: experimenter
  name: exp-scratch
current context: ""
kind: Config
preferences: {}
users:
- name: developer
  user:
    client-certificate: fake-cert-file
    client-key: fake-key-file
- name: experimenter
  user:
    password: some-password
    username: exp
```

Refer to the exhibit. A kubeconfig file to manage access to clusters is provided. How many clusters are defined and which of them are accessed using username/password authentication versus certificate?

- A. two clusters; scratch
- B. three clusters; scratch
- C. three clusters; development
- D. two clusters; development

**Answer: C**

#### NEW QUESTION 79

Which two strategies are used to protect personally identifiable information? (Choose two.)

- A. Encrypt data in transit.
- B. Encrypt hash values of data.
- C. Encrypt data at rest.
- D. Only hash usernames and passwords for efficient lookup.
- E. Only encrypt usernames and passwords for efficient lookup.

**Answer: AB**

#### NEW QUESTION 84

Which database type should be used to store data received from model- driven telemetry?

- A. BigQuery database
- B. Time series database
- C. NoSQL database
- D. PostgreSQL database

**Answer: B**

#### NEW QUESTION 89

```
- name: Configure Interfaces
  with_items: "{{interfaces}}"
  netconf_config:
    <<: *host_info
    xml: |
      <config>
        <interfaces xmlns="urn:ietf:params:xml:ns:yang:ietf-interfaces">
          <interface>
            <name>{{item.interface_type}}{{item.interface_id}}</name>
            <description>{{item.description}}</description>
            <type xmlns:ianaift="urn:ietf:params:xml:ns:yang:iana-if-type">ianaift:ethernetCsmacd</type>
            <enabled>true</enabled>
            <ipv4 xmlns="urn:ietf:params:xml:ns:yang:ietf-ip">
              <address>
                <ip>{{item.ip_address}}</ip>
                <netmask>{{item.subnet_mask}}</netmask>
              </address>
            </ipv4>
          </interface>
        </interfaces>
      </config>
```

Refer to the exhibit. The Ansible playbook is using the netconf\_module to configure an interface using a YANG model. As part of this workflow, which YANG models augment the interface?

- A. ietf-interfaces and ietf-ip
- B. iana-if-type and ietf-interfaces
- C. ietf-ip and openconfig-interface
- D. ietf-ip and iana-if-type

**Answer: B**

#### NEW QUESTION 91

```
name: VRFs
ios_vrf:
  vrf: "{{ local_vrf }}"
  state: present
  purge: yes
```

Refer to the exhibit. The YAML represented is using the ios\_vrf module. As part of the Ansible playbook workflow, what is the result when this task is run?

- A. VRFs not defined in the host\_vars file are removed from the device.
- B. VRFs not defined in the host\_vars file are added to the device, and any other VRFs on the device remain.
- C. VRFs defined in the host\_vars file are removed from the device.
- D. VRFs are added to the device from the host\_vars file, and any other VRFs on the device are removed.

**Answer: D**

#### NEW QUESTION 92

Application sometimes store configuration as constants in the code, which is a violation of strict separation of configuration from code. Where should application configuration be stored?

- A. environment variables
- B. YAML files
- C. Python libraries
- D. Dockerfiles
- E. INI files

**Answer: B**

#### NEW QUESTION 93

.....



## Thank You for Trying Our Product

### We offer two products:

1st - We have Practice Tests Software with Actual Exam Questions

2nd - Questions and Answers in PDF Format

### 350-901 Practice Exam Features:

- \* 350-901 Questions and Answers Updated Frequently
- \* 350-901 Practice Questions Verified by Expert Senior Certified Staff
- \* 350-901 Most Realistic Questions that Guarantee you a Pass on Your First Try
- \* 350-901 Practice Test Questions in Multiple Choice Formats and Updates for 1 Year

**100% Actual & Verified — Instant Download, Please Click**  
**[Order The 350-901 Practice Test Here](#)**