

Cisco

Exam Questions 352-001

CCDE Written Exam



NEW QUESTION 1

Which load balancing option for IP-only traffic is the least efficient in terms of EtherChannel physical links utilization?

- A. On a per source IP address basis
- B. On a per destination MAC address basis
- C. On a per destination IP address basis
- D. On a per port number basis

Answer: B

NEW QUESTION 2

ACME Corporation is integrating IPv6 into their network, which relies heavily on multicast distribution of data. Which two IPv6 integration technologies support IPv6 multicast? (Choose two.)

- A. 6VPE
- B. 6PE
- C. dual stack
- D. ISATAP
- E. 6to4
- F. IPv6INIP

Answer: CE

NEW QUESTION 3

Which three options are important design functions of IPv6 first-hop security? (Choose three)

- A. It prevents rogue DHCP servers from assigning IPv6 addresses.
- B. It prevents IPv6 packets fragmentation.
- C. It limits IPv6 route advertisement in the network.
- D. It implements a broadcast-control mechanism.
- E. It suppresses excessive multicast neighbor discovery.
- F. It implements multihoming security.

Answer: ACE

NEW QUESTION 4

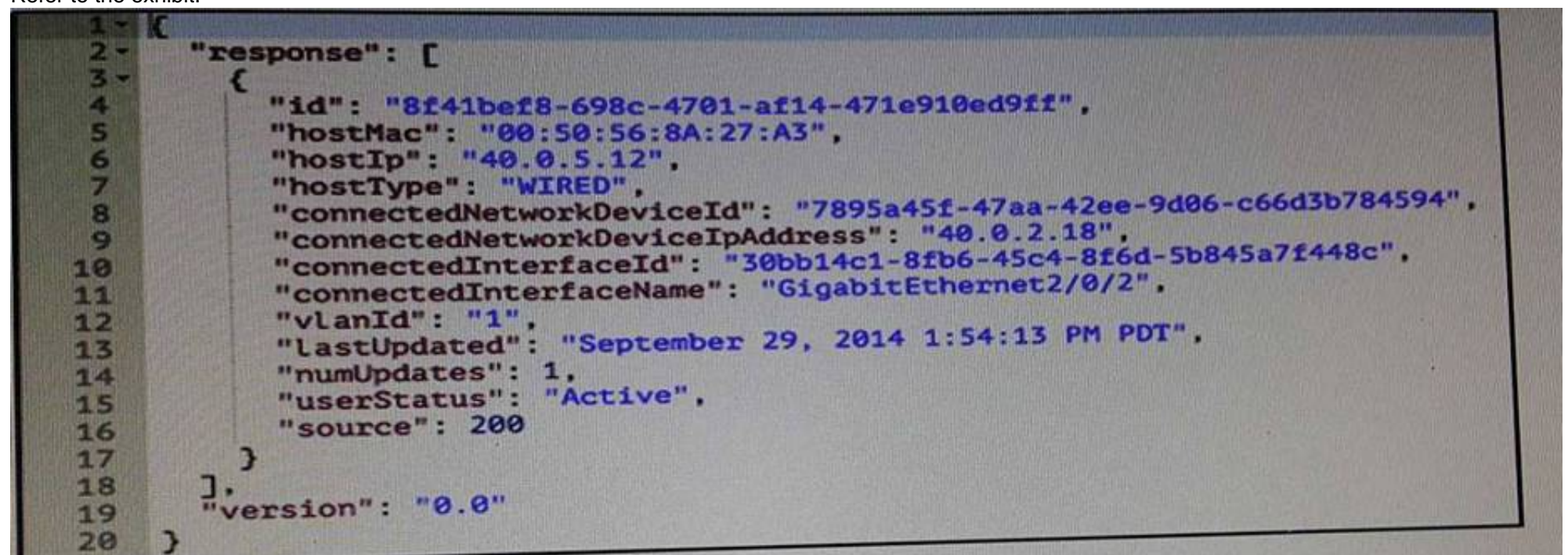
You have been asked to design a wireless network solution that will implement context-aware services on an existing network that was initially deployed for data traffic only. Which two design principles would you follow to increase the location accuracy with the least possible impact on the current setup? (Choose two.)

- A. Use directional antennas to provide better cell separation.
- B. Add access points along the perimeter of the coverage area.
- C. Install additional APs in monitor mode where the co-channel interference would otherwise be affected.
- D. Increase the AP density to create an average inter-access point distance of less than 40 ft. | 12.2 meters
- E. Fine tune the access point's radio configuration to have a higher average transmission power to achieve better coverage.

Answer: AD

NEW QUESTION 5

Refer to the exhibit.



```

1- {
2-   "response": [
3-     {
4-       "id": "8f41bef8-698c-4701-af14-471e910ed9ff",
5-       "hostMac": "00:50:56:8A:27:A3",
6-       "hostIp": "40.0.5.12",
7-       "hostType": "WIRED",
8-       "connectedNetworkDeviceId": "7895a45f-47aa-42ee-9d06-c66d3b784594",
9-       "connectedNetworkDeviceIpAddress": "40.0.2.18",
10-      "connectedInterfaceId": "30bb14c1-8fb6-45c4-8f6d-5b845a7f448c",
11-      "connectedInterfaceName": "GigabitEthernet2/0/2",
12-      "vlanId": "1",
13-      "lastUpdated": "September 29, 2014 1:54:13 PM PDT",
14-      "numUpdates": 1,
15-      "userStatus": "Active",
16-      "source": 200
17-    }
18-  ],
19-   "version": "0.0"
20- }
  
```

Which data format is used in this REST API call?

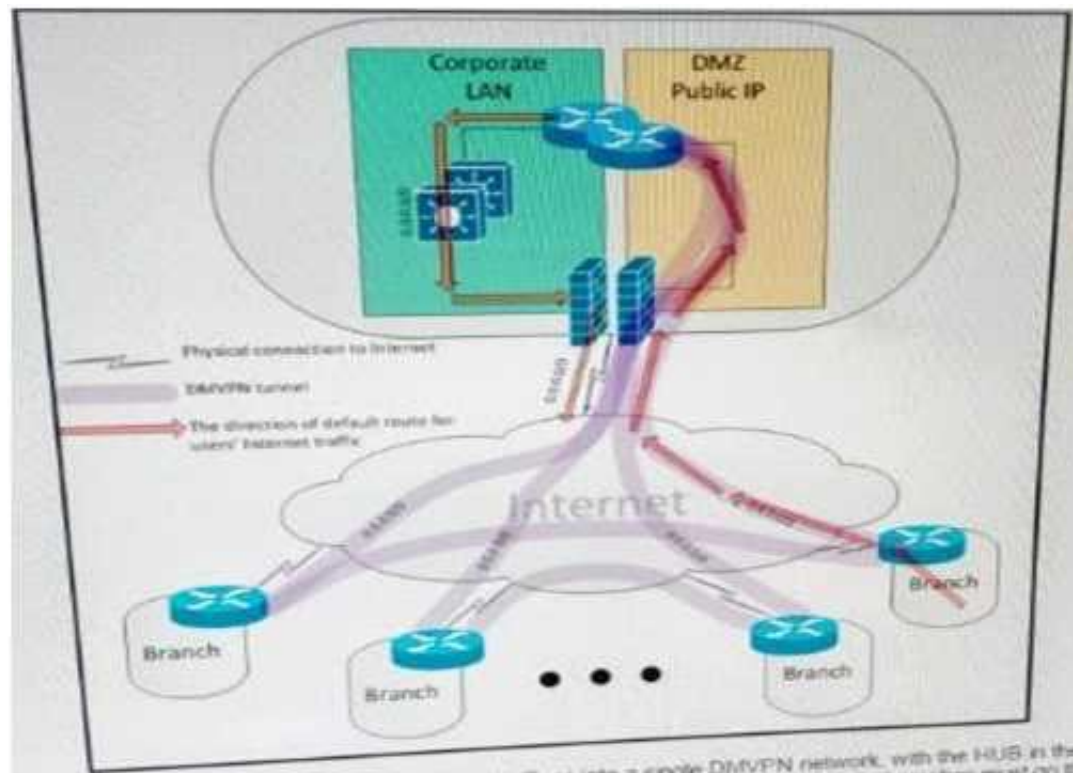
- A. JSON
- B. HTMLv5
- C. HTML

- D. XML
- E. BASH

Answer: A

NEW QUESTION 6

Refer to the exhibit.



A customer interconnected hundreds of branch offices into a single DMVPN network, with the HUB in the main data center. Due to security policies, the customer requires that the default route for all Internet traffic from the users at the branches must go through the tunnel and the only connections that are allowed to and from the branch router over the local internet circuit are the DMVPN tunnels. Which two combined actions must you take on the branch router to address these security requirements and keep the solution scalable? (Choose two)

- A. Place the WAN interface in a front-door VRF, leaving the tunnel interface in the default routing instance
- B. Protect the WAN interface by an inbound ACL that permits only IPsec-related traffic
- C. Implement a zone-based firewall that allows only IPsec-related traffic from zone UNTRUSTED to zone TRUSTED
- D. Add a host route for the public IP address of each remote branch and HUB routers that points directly to the local ISP, and add a default route that points to the tunnel
- E. Use a floating default route with the preferred path over the tunnel and a backup path over the Internet natively

Answer: AB

NEW QUESTION 7

Which reason prevents a designer from using a GDOI-based VPN to secure traffic that traverses the Internet?

- A. Enterprise host IP addresses are typically not routable.
- B. GDOI is less secure than traditional IPsec.
- C. Network address translation functions interfere with tunnel header preservation.
- D. The use of public addresses is not supported with GDOI.

Answer: C

NEW QUESTION 8

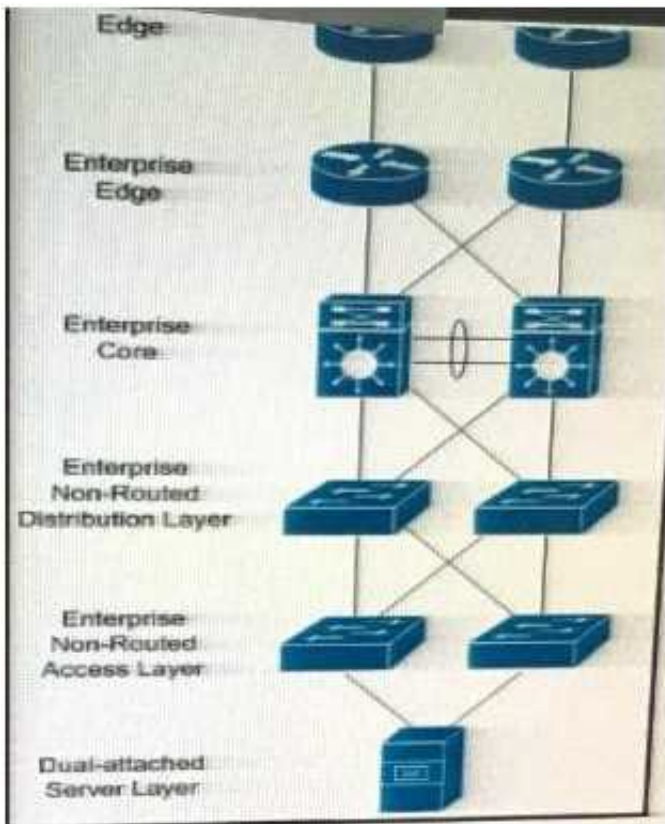
What are two possible drawbacks of ending Loop-Free Alternate to support fast convergence for most destination IGP prefixes? (Choose two)

- A. The IGP topology might need to be adjust
- B. Loop-free alternate's convergence in less than 100 milliseconds is not possible
- C. Loop-free alternate's are supported only for prefixes that are considered external tot the IGP
- D. Loop-free alternates are not supported in global VPN VRF OSPF instances
- E. Additional path computations are needed

Answer: AE

NEW QUESTION 9

Refer to the Exhibit.



In which three Layers should you use nonstop Forwarding to reduce service impact in case of failure? (Choose three)

- A. Enterprise Edge
- B. Enterprise Core
- C. Service provider Edge
- D. Dual-attached sever Layer
- E. Enterprise Non-Routed Access Layer
- F. Enterprise Non-Routed Distribution Layer.

Answer: ABC

NEW QUESTION 10

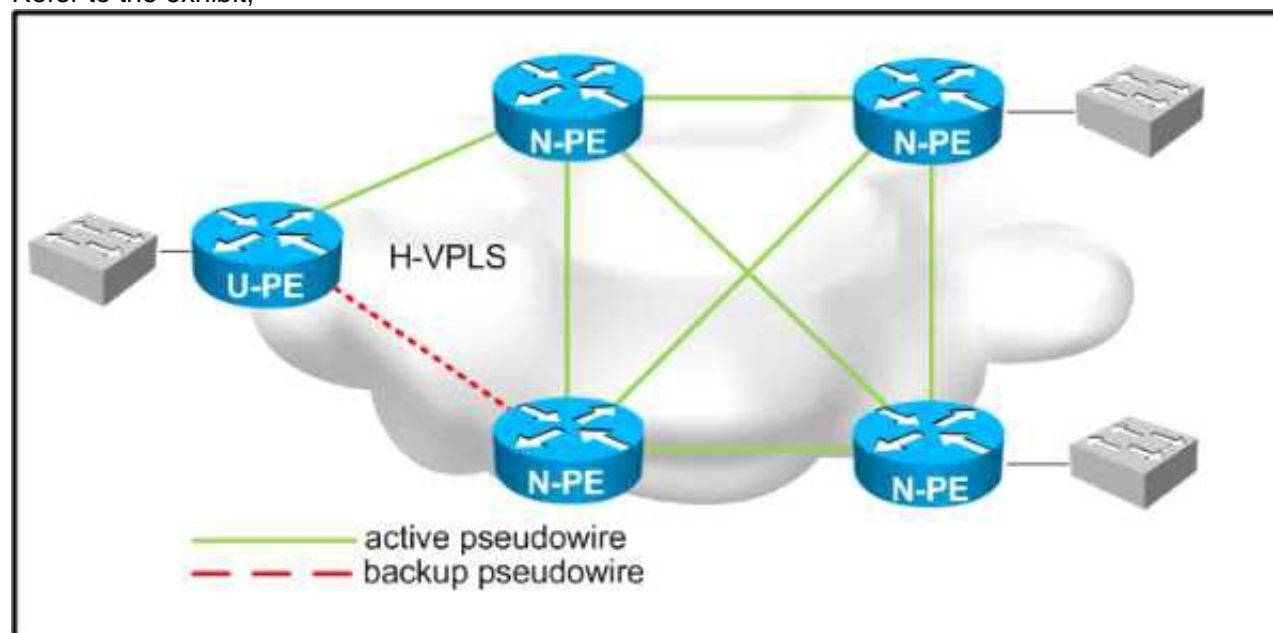
What is the definition of TOGAF framework?

- A. A framework for enterprise IP address management (IPAM) based on the IANA trusted IP lease allocation scheme.
- B. A series of tools for process improvement that uses statistical method to reduce defect in process and manufacturing.
- C. A framework for enterprise architecture that provides a comprehensive approach for designing planning implementing and governing enterprise information architecture.
- D. A five-volume framework for service management that covers design transition and delivery of service and from which the ISO 20000 was developed.
- E. An ISO framework that establishes a module for network management and contains guidelines for managing object the management database and the application entity.

Answer: C

NEW QUESTION 10

Refer to the exhibit,



Which two design considerations should be implemented on the pseudowire between N-PE and U-PE routers for a loop-free hierarchical VPLS service? (Choose two)

- A. Disable split horizon towards the U-PE router.
- B. Disable MAC learning on the U-PE router.
- C. Enable split horizon towards the N-PE routers.
- D. Disable MAC learning on the U-PE routers.
- E. Disable MAC learning on the U-PE routers.
- F. Enable split horizon towards the U-PE routers.
- G. Disable split horizon toward the N-PE routers.

Answer: AC

NEW QUESTION 15

You are designing a WAN network solution with EIGRP based on VPLS. The interface speed is 10Mb/s, but the access rate of the WAN connection is 256 Kb/s. What should you include in the network design, in order to avoid potential issues with EIGRP?

- A. Limit EIGRP traffic to the access rate with a policer.
- B. Tag outbound EIGRP traffic and have the WAN provider add it to the priority queue.
- C. Limit traffic to the access rate with interface traffic shaping.
- D. Set the interface bandwidth to match the access rate.

Answer: D

NEW QUESTION 20

A company would like to distribute a virtual machine (VM) hosting cluster between three data centers with the capability to move VMs between sites. The connectivity between data centers is IP only and the new design should use the existing WAN. Which Layer 2 tunneling technology do you recommend?

- A. ATOM
- B. L2TPv3
- C. OTV
- D. VPLS

Answer: C

NEW QUESTION 25

Which multicast technology provides a large, many-to-many connectivity for a new application while minimizing load on the existing network infrastructure?

- A. PIM Sparse Mode
- B. Bidirectional PIM
- C. Any-Source Multicast
- D. Source Specific Multicast

Answer: B

NEW QUESTION 27

At which two networks points is route summarization supported? (Choose two)

- A. At EIGRP AS boundaries
- B. At EIGRP interface boundaries
- C. At OSPF virtual-link boundaries
- D. At EIGRP area boundaries
- E. At OSPF area boundaries
- F. At EIGRP stub interface boundaries

Answer: BE

NEW QUESTION 30

You are designing a data center migration from one location to another, which requires all existing VLANs spanned to the new data center to maintain host IP addressing. Two temporary Gigabit Ethernet circuits are available to extend the VLANs at Layer 2 to the location as trunk links between core switches in each location. Which solution provides maximum fault isolation between the two data centers to ensure a Layer Issue in one data center does not affect the other during the migration?

- A. Perform BPDU filtering over the trunk links
- B. Enable STP PortFast on host ports within each data center
- C. Run the dual links as multichassis Etherchannel trunk between core switches within each location
- D. Perform HSRP filtering over the trunk links to maintain active HSRP gateways within each data center for each VLAN

Answer: A

NEW QUESTION 35

When designing a network .Which method can be used to control the exit point for traffic an autonomous system, at the layer 3 control plane?

- A. Prepending AS path.
- B. Tuning the multi-exit discriminator.
- C. Setting the site of Origin extended community.
- D. Tuning the metric of the under-tying IGP.

Answer: D

NEW QUESTION 37

A switched network is being designed to support a manufacturing factory. Due to cost constraints, fiber-based connectivity is not an option. Which design allows for a stable network when there is a risk of interference from the manufacturing hardware in use on the factory floor?

- A. Design the network to include UDLD to detect unidirectional links and take them out of service.
- B. Design the network to include Ether Channel bundles to prevent a single-link failure from taking down a switch interconnection point.
- C. Design the network to include loop guard to prevent a loop in the switched network when a link has too much interference.
- D. Design the network to include Backbone Fast on all devices to accelerate failure convergence times.

Answer: B

NEW QUESTION 40

An network is designed to use OSPF to reach eBGP peers. Which condition should be avoided in the design to potentially prevent the eBGP peers do not flap continuously in case of link failure?

- A. Disable BGP synchronization.
- B. Advertise IP addresses used on eBGP peer statement via a non-backbone OSPF area.
- C. Advertise via eBGP IP addresses used on eBGP peer statements.
- D. Use an ACL to block BGP in one direction.

Answer: C

NEW QUESTION 45

Which two options are design considerations when introducing FCoE into an existing network? (Choose two)

- A. The FCoE QoS markings may overlap with call signaling QoS markings
- B. Optical cabling is needed to transmit FCoE traffic between a server and its directly connected Ethernet switch
- C. The existing network must support a MTU of 3280 bytes
- D. Twinaxial cabling can be used to transmit FCoE traffic between a server and its directly connected Ethernet switch, if it is less than 10 meters
- E. All the servers in the data center must be retrofitted with converged Network Adapters

Answer: AE

NEW QUESTION 47

Which option is a critical mechanism to optimize convergence speed when using MPLS FRR?

- A. IGP timers
- B. Bandwidth reservation
- C. Shared risk link groups
- D. Down detection

Answer: D

NEW QUESTION 51

You are asked to design an RSVP-TEL LSP protection solution for a large service provider network .Which traffic protection mechanism is highly scalable and ensure that multiple LPS always terminate at the same merge point?

- A. Shared explicit protection.
- B. Detour LSPs.
- C. 1:N protection.
- D. 1:1 protection.

Answer: C

NEW QUESTION 54

Which two options are Loop-Free Alternate design considerations? (Choose two)

- A. MPLS TE must be enabled because it is used for building the backup paths
- B. Backup coverage and effectiveness is dependent on the network topology
- C. It can simplify the capacity planning by matching the backup path with the post-convergence path
- D. It provides an optional backup path by avoiding low bandwidth and edge links
- E. It can impact SLA-sensitive appliance by routing traffic to low bandwidth links while IGP convergence is in progress

Answer: BE

NEW QUESTION 56

An enterprise customer A with provider-independent address space is dual-homed to two ISP. Which two options , when combined, allow for customer A to efficiently achieve out-bond traffic load- balancing? (Choose two)

- A. Advertise Customer A subnets with a shorter AS path prepend to one of the ISPs than to the other
- B. Advertise Customer A subnets with different MED values to the two ISPs
- C. Accept a default route from both ISPs
- D. Make the CE connected to both ISPs route reflector
- E. Accept the routes originated on both ISPs and their direct peers

Answer: CE

NEW QUESTION 58

What two options are significant drivers for 5G in IoT networks? (Choose two)

- A. Energy Efficiency
- B. Lower Latency
- C. Mass Connectivity
- D. Programmability

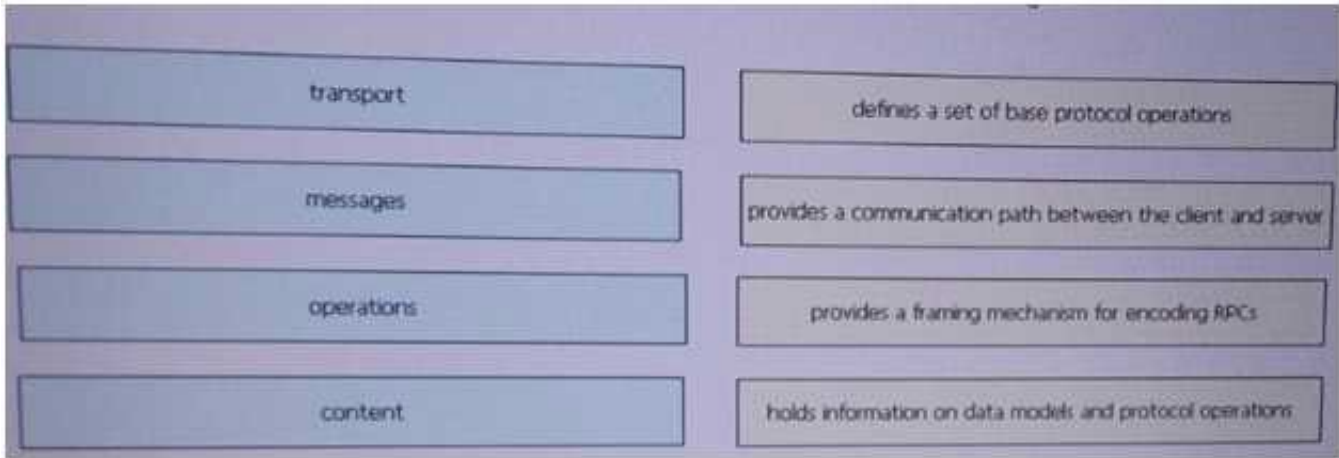
E. Higher data rates

Answer: BC

NEW QUESTION 60

DRAG DROP

Drag and drop the NETCONF layers on the left onto their appropriate description on the left.



- A. Mastered
- B. Not Mastered

Answer: A

Explanation:



NEW QUESTION 65

As a part of a network design, you should tighten security to prevent man-in-the-middle. Which two security options ensure that authorized ARP responses take place according to know IP-to-MAC address mapping? (Choose two)

- A. DHCP snooping
- B. ARP spoofing
- C. ARP rate limiting
- D. Dynamic ARP Inspection
- E. Port security

Answer: AD

NEW QUESTION 70

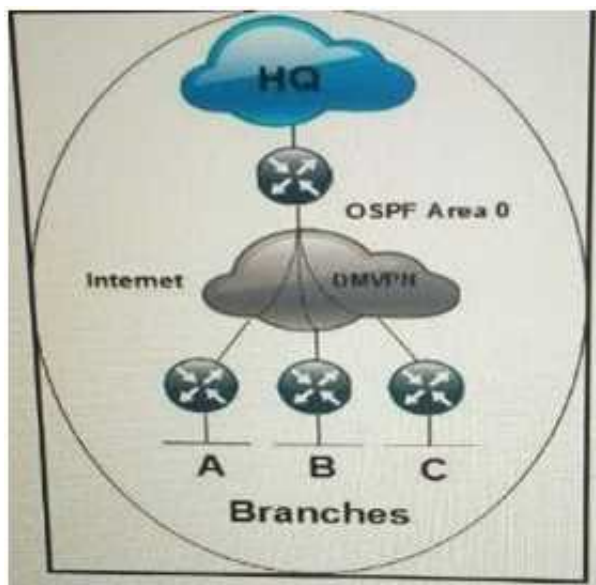
A customer requests that you determine how much of their remote branch traffic into a central data center is related to a call manager that resides in the data center. Which solution do you recommend?

- A. Enable NetFlow on branch routers
- B. Enable netFlow on central data center routers
- C. Perform SNMP polling of central data center routers
- D. Perform SNMP polling of branch routers
- E. Create an ACL on the local call manager switch with logging enabled
- F. Span traffic from the switch port on the call manager to a data analyzer

Answer: B

NEW QUESTION 72

Refer to the exhibit.



Each branch network must connect to the HQ and other branch networks over the phase 2 DMVPN network using a single tunnel interface. OSPF is running over the DMVPN network. Which network type is compatible with the DMVPN tunnel and ensures that the next hop of any route is unchanged?

- A. Point-to-point
- B. Point-to-multipoint
- C. Broadcast
- D. Nonbroadcast

Answer: C

NEW QUESTION 75

As network designer, which option is your main concern with regards to virtualizing multiple network zones into a single hardware device?

- A. Fate sharing
- B. CPU resource allocation
- C. Congestion control
- D. Security
- E. Bandwidth allocation

Answer: A

NEW QUESTION 76

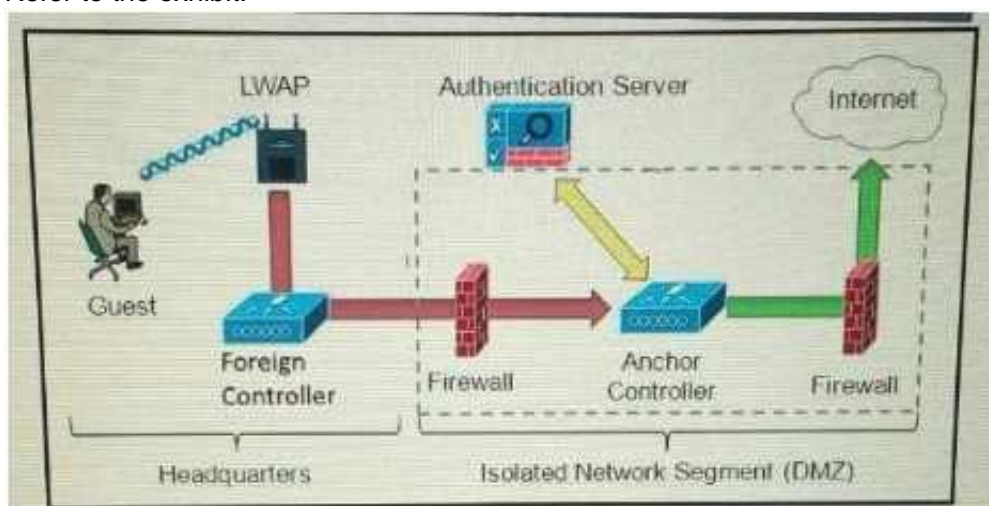
Which two options are two advantages of summarizing networks at the aggregation layer rather than at the core? (Choose two.)

- A. It prevents the core from having unnecessary routes.
- B. It no longer needs a core layer.
- C. It prevents black hole routing.
- D. It avoids network-wide impact upon VLAN changes local to the aggregation devices.
- E. it allows for optimal routing

Answer: AD

NEW QUESTION 77

Refer to the exhibit.



Which solution must be used to send traffic from the foreign wireless LAN controller to the anchor wireless LAN controller?

- A. Encapsulate packets into an EoIP tunnel and send them to the anchor controller
- B. Send packets from the foreign controller to the anchor controller via Layer 3 MPLS VPN or VRF-Lite
- C. Send packets from the foreign controller to the anchor controller via IPinIP or IPsec tunnel
- D. Send packets without encapsulation to the anchor controller over the routed network

Answer: A

NEW QUESTION 81

Which native mechanism does OSPF use to prevent loops in MPLS VPNs?

- A. CE devices that run OSPF set the DN bit toward the PE router
- B. PE devices that run OSPF clear the DN bit toward the CE router
- C. CE devices that run OSPF clear the DN bit toward the PE router
- D. Creation of PE to PE OSPF sham link across the MPLS-created super backbone
- E. PE routers verify OSPF domain IDs used by CE OSPF processes
- F. PE devices that run OSPF set the DN bit toward the CE router

Answer: F

NEW QUESTION 84

Which two functions are performed at the distribution layer of the three-layer hierarchical network design model? (Choose two).

- A. Fault isolation
- B. QoS classification and marking boundary
- C. Fast transport
- D. Reliability
- E. Load balancing

Answer: AE

NEW QUESTION 87

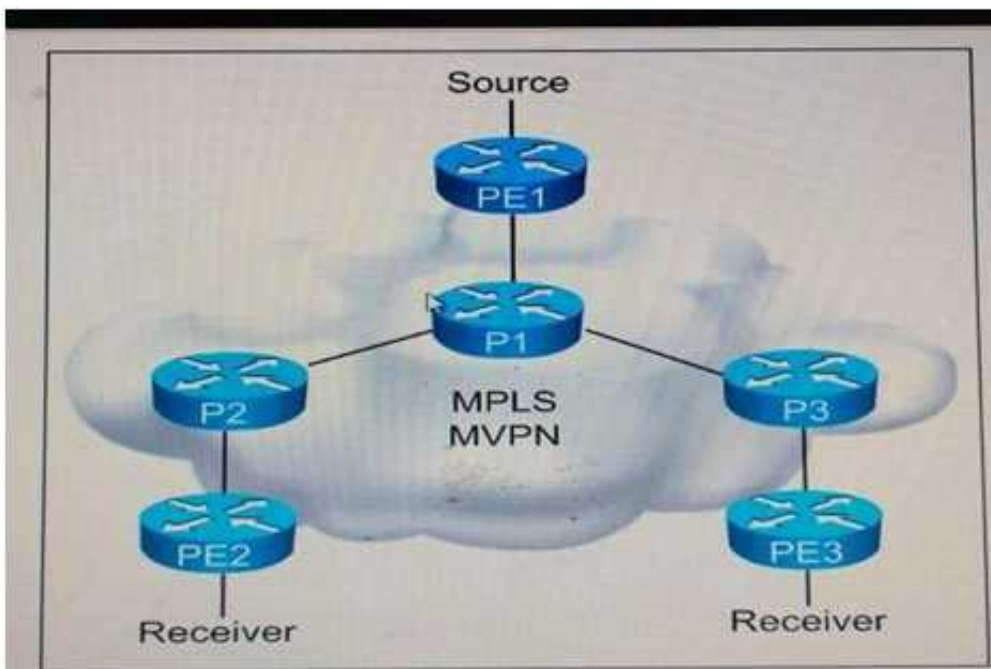
Which three options are IS-IS design considerations when connecting two Layer 3 switches directly using a 10 GBASE-T cabling and formatting an IS-IS neighbor adjacency?

- A. The default IS-IS network type is point-to-point so a DIS is not elected
- B. A DIS is elected between the IS-IS neighbors and the elected DIS is pre-empted if router with a higher system ID is connected
- C. The area, levels, and interface MTU parameters must match, and system MTU must be unique for two IS-IS routers to become adjacent
- D. Faster IS-IS hello and dead timers increase bandwidth and CPU use, and may cause instability
- E. The IS-IS hello and dead timers should be tuned to detect failures as quickly as possible
- F. A DIS is elected between the IS-IS neighbors and the elected Dis is pre-empted if a router with a lower system ID is connected
- G. The hello and dead timers must match for two IS-IS routers to become adjacent

Answer: CDF

NEW QUESTION 92

Refer to the exhibit.



You are a network designer who is given these design requirements: Multicast services must be provided for Layer 3 VPN customers
 The same forwarding technology must be used as Layer 3 VPN unicast packets
 Replication of multicast traffic is not allowed on the ingress PE
 Which multicast VPN technology conforms to the design requirements?

- A. Multipoint-to-point LDP
- B. MSDP
- C. MLDP VPN
- D. Rosen Draft using LDP

Answer: C

NEW QUESTION 95

Which two items are required for data plane hardening of an infrastructure device? (Choose two)

- A. Disable unused services
- B. Routing protocol authentication
- C. SNMPv3
- D. Redundant AAA servers
- E. Infrastructure ACLs
- F. Warning banners
- G. Control Plane Policing

Answer: AE

NEW QUESTION 96

Which effect of designing a Layer 2 network using the PortFast fast feature with PVST+ is true?

- A. It shuts down the port when receiving the superior BPDU
- B. It accelerates the network convergence on the trunk uplinks
- C. In combination with BPDU filtering, it causes the switch port to stay in the forwarding state
- D. It moves the switch port directly to the forwarding state

Answer: D

NEW QUESTION 98

Your customer asked you to redesign there is-IS network to reduce to a minimum the number of adjacencies because the network has several routers running L1/L2 mode on the sme Ethernet segment. Which action do you recommend?

- A. Define only one router on the segment to be DIS
- B. Make the interface priority on the backup DIS lower than the primary DIS
- C. Change half the routers to L1 routers and half to L2 routers
- D. Change all routers to a single-level area

Answer: D

NEW QUESTION 102

Which MPLS attribute is required for links to carry a given MPLSTE tunnel?

- A. TE tunnel destination address
- B. Tunnel path-selection metric
- C. Affinity
- D. Next-hop backup tunnel

Answer: A

NEW QUESTION 103

A service provider must provide Internet connectivity to an MPLS Layer 3 VPN customer. Which solution allows this customer to have Internet access?

- A. Implement a global default route with a next hop in the VRF late on PE
- B. Implement policy-based routing between PE and CE
- C. Implement a default route in the VRF with a next hop in the global routing table of PE
- D. Implement destination NAT between the VRF and the global RIB of PE

Answer: C

NEW QUESTION 107

How can jitter be compensated on an IP network that carries real-time VoIP traffic with acceptable voice transmission quality?

- A. Set up VAD to replace gaps on speech with comfort noise
- B. Change CODEC from G.729 to G.711
- C. Deploy RSVP for dynamic VoIP packet classification
- D. Set up a playout buffer to play back the voice stream

Answer: D

NEW QUESTION 112

On a large enterprise security solution, which two options are IDS or IPS modes of operation? (Choose two)

- A. Transparent mode
- B. Routed mode
- C. Inline mode
- D. Traffic discovery mode
- E. Promiscuous mode

Answer: C&E

NEW QUESTION 115

In a network with dynamic mutual redistribution between multiple OSPFv2 and EIGRP boundaries, which two mechanisms avoid suboptimal routing? (Choose two)

- A. Route filtering
- B. AD manipulation
- C. Matching EIGRP process ID
- D. Matching OSPF external routes
- E. Route tagging

Answer: AE

NEW QUESTION 120

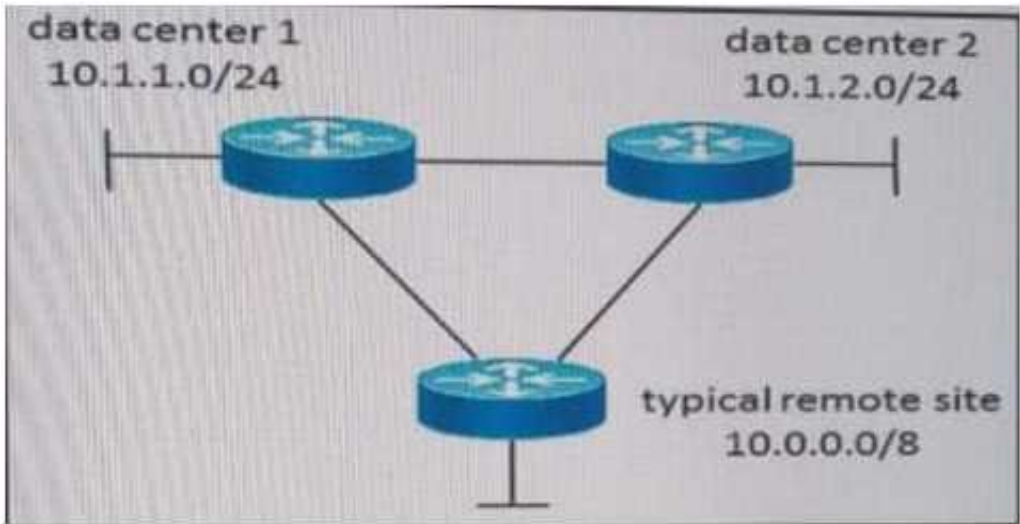
Which two conditions are required for successful route aggregation? (Choose two)

- A. Contiguous prefix allocation
- B. Logical separation between zones or layers within networks
- C. Matching traffic aggregation with route aggregation locations
- D. Consistent prefix allocations per network
- E. Physical separation between zones or layers within networks

Answer: BD

NEW QUESTION 123

Refer to the exhibit.



A customer currently has a large EIGRP-based network with several remote sites attached. All remote sites connect to the two corporate data centers, depicted as 10.1.1.0 and 10.1.2.0. The customer has experienced several network-wide failures where neighbors were stuck-in-active and had other network stability issues due to some links flapping. Which two redesign options increase stability and reduce the load on the remote site routers, still maintaining optimal routing between remote sites and the two data centers? (Choose two)

- A. Set the data center routers as stub-routers
- B. Perform summarization at the data centers, selectively leaking routes sent to the remote sites
- C. Perform summarization at the remote sites, selectively leaking routes sent to the data centers
- D. Set the hello interval timer to be larger than the hold interval
- E. Increase the hold interval to accommodate lost hello packets on error-prone links

Answer: AB

NEW QUESTION 126

What is an effect of using ingress filtering to prevent spoofed addresses on a network design?

- A. It reduces the effect of DDoS attacks when associated with DSCP remarking to Scavenger
- B. It protects the network infrastructure against spoofed DDoS attacks
- C. It filters RFC 1918 addresses
- D. It classifies bogon traffic and remarks it with DSCP bulk

Answer: B

NEW QUESTION 129

DRAG DROP

Drag the QoS tools on the left and drop each into its corresponding function on the right.	
Policing	Addresses congestion that is due to speed mismatches when CIR is not exceeded.
Marking	Drops traffic to ensure that the committed or offered rate are not exceeded.
Buffering	Allows drops to be minimized based on traffic classification when CIR is exceeded.
WRED	Allows for consistent classification within a DiffServ domain.
Shaping	Avoids congestion via selective traffic dropping within the network.
ECN	Avoids congestion by end hosts reducing their traffic rates when congestion is detected.

- A. Mastered
- B. Not Mastered

Answer: A

Explanation:

Buffering
Policing
Shaping
Marking
WRED
ECN

NEW QUESTION 132

DRAG DROP

Drag and drop the technology details or features support on the left into the corresponding Layer 2 multipath technologies on the right. Not all options will be used.

IETF standard
vPC+ supported
FHRP active/active supported
shared interswitch links supported
extension of OSPF
multiple topologies supported

TRILL
Target 1
Target 2
FabricPath
Target 3
Target 4
Target 5

- A. Mastered
- B. Not Mastered

Answer: A

Explanation:

TRILL

IETF standard

shared interswitch links supported

FabricPath

vPC+ supported

FHRP active/active supported

multiple topologies supported

NEW QUESTION 136

.....

Thank You for Trying Our Product

We offer two products:

1st - We have Practice Tests Software with Actual Exam Questions

2nd - Questions and Answers in PDF Format

352-001 Practice Exam Features:

- * 352-001 Questions and Answers Updated Frequently
- * 352-001 Practice Questions Verified by Expert Senior Certified Staff
- * 352-001 Most Realistic Questions that Guarantee you a Pass on Your First Try
- * 352-001 Practice Test Questions in Multiple Choice Formats and Updates for 1 Year

100% Actual & Verified — Instant Download, Please Click
[Order The 352-001 Practice Test Here](#)