

# Cisco

## Exam Questions 352-001

CCDE Written Exam



#### NEW QUESTION 1

The cloud service provider CSP is planning to launch five data centers in Egypt, United Arab Emirates, Saudi Arabia, Qatar and Turkey. CSP is looking for VLAN extension and DCIs between these five data centers to allow for software replication, where original and backup VMs must be on the same subnet. Which tunneling technology must they use?

- A. VPLS
- B. IPsec VPN
- C. VPWS
- D. L2TPv3

**Answer:** A

#### NEW QUESTION 2

Which load balancing option for IP-only traffic is the least efficient in terms of EtherChannel physical links utilization?

- A. On a per source IP address basis
- B. On a per destination MAC address basis
- C. On a per destination IP address basis
- D. On a per port number basis

**Answer:** B

#### NEW QUESTION 3

What are two benefits of following a structured hierarchical and modular design? (Choose two.)

- A. Each component can be designed independently for its role.
- B. Each component can be managed independently based on its role.
- C. Each component can be funded by different organizations based on its role.
- D. Each component can support multiple roles based on the requirements.
- E. Each component can provide redundancy for applications and services.

**Answer:** AB

#### NEW QUESTION 4

Which three options are important design functions of IPv6 first-hop security? (Choose three)

- A. It prevents rogue DHCP servers from assigning IPv6 addresses.
- B. It prevents IPv6 packets fragmentation.
- C. It limits IPv6 route advertisement in the network.
- D. It implements a broadcast-control mechanism.
- E. It suppresses excessive multicast neighbor discovery.
- F. It implements multihoming security.

**Answer:** ACE

#### NEW QUESTION 5

You have been asked to design a wireless network solution that will implement context-aware services on an existing network that was initially deployed for data traffic only. Which two design principles would you follow to increase the location accuracy with the least possible impact on the current setup? (Choose two.)

- A. Use directional antennas to provide better cell separation.
- B. Add access points along the perimeter of the coverage area.
- C. Install additional APs in monitor mode where the co-channel interference would otherwise be affected.
- D. Increase the AP density to create an average inter-access point distance of less than 40 ft. | 12.2meters
- E. Fine tune the access point's radio configuration to have a higher average transmission power to achieve better coverage.

**Answer:** AD

#### NEW QUESTION 6

Refer to the exhibit.

```

1 {
2   "response": [
3     {
4       "id": "8f41bef8-698c-4701-af14-471e910ed9ff",
5       "hostMac": "00:50:56:8A:27:A3",
6       "hostIp": "40.0.5.12",
7       "hostType": "WIRED",
8       "connectedNetworkDeviceId": "7895a45f-47aa-42ee-9d06-c66d3b784594",
9       "connectedNetworkDeviceIpAddress": "40.0.2.18",
10      "connectedInterfaceId": "30bb14c1-8fb6-45c4-8f6d-5b845a7f448c",
11      "connectedInterfaceName": "GigabitEthernet2/0/2",
12      "vlanId": "1",
13      "lastUpdated": "September 29, 2014 1:54:13 PM PDT",
14      "numUpdates": 1,
15      "userStatus": "Active",
16      "source": 200
17    }
18  ],
19  "version": "0.0"
20 }

```

Which data format is used in this REST API call?

- A. JSON
- B. HTMLv5
- C. HTML
- D. XML
- E. BASH

**Answer:** A

#### NEW QUESTION 7

DRAG DROP

Drag and drop the design characteristics of GET VPN from the left to the right. Not all options are used.

It simplifies encryption key management while supporting routing, QoS, and multicast.	Target 1
It provides encryption, but not authentication.	Target 2
It supports native multicast across MPLS and private IP networks.	Target 3
It offers scalable, full meshing for IPsec VPNs.	

- A. Mastered
- B. Not Mastered

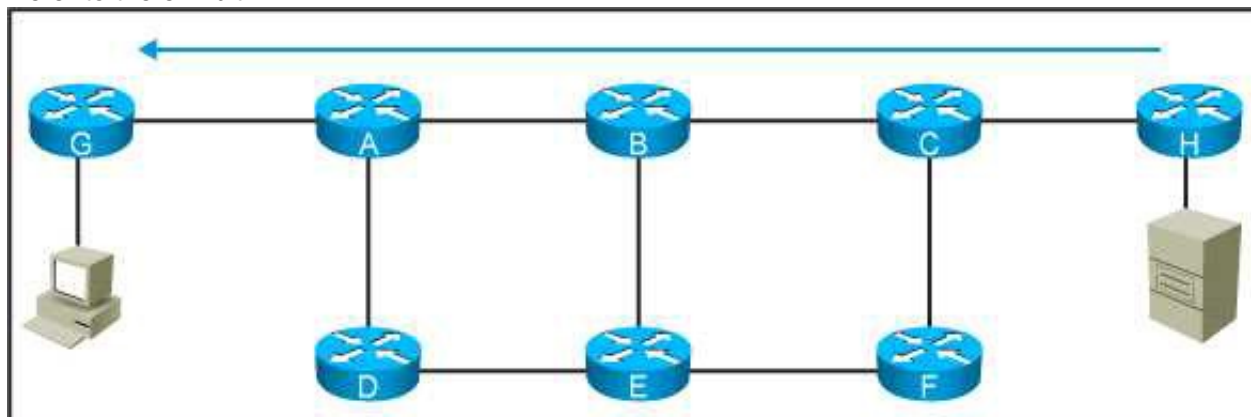
**Answer:** A

**Explanation:**

A, C, D

#### NEW QUESTION 8

Refer to the exhibit.



This network is running IS-IS as the single routing protocol and the LSP and SPF timers are aggressively configured so the network converges in subsecond. The customer reports that router B had a memory crash and reloaded. Which resulted in some packets from the application being lost. The application servers are behind router G and the end users are behind router H, which design change should be made to prevent this packet-loss problem from reoccurring?

- A. Use asymmetric carrier delay timer
- B. Deploy all links as point-to-point



- C. Redesign the network as a flat level 2
- D. Optimize the LSP/SPF timers to send LSPs immediately after a topology change
- E. Enable the advertisement of the overload bit for a specific amount of time after reload on router B

**Answer: E**

#### NEW QUESTION 9

What is a design application of control plane policing?

- A. CPP protects the control plane from reconnaissance and or denial-of-service attacks
- B. CPP protects the forwarding plane by rate –limiting excessive routing protocol traffic
- C. CPP protects the forwarding plane by allowing legitimate traffic and dropping excessive traffic
- D. CPP drop malformed packet that are sent to the CPU

**Answer: A**

#### NEW QUESTION 10

Which reason prevents a designer from using a GDOI-based VPN to secure traffic that traverses the Internet?

- A. Enterprise host IP addresses are typically not routable.
- B. GDOI is less secure than traditional IPsec.
- C. Network address translation functions interfere with tunnel header preservation.
- D. The use of public addresses is not supported with GDOI.

**Answer: C**

#### NEW QUESTION 10

In a routed access hierarchical campus design, the access-to-distribution Layer 2 uplink trunks are replaced with Layer 3 point-to-point routed links. Why is it recommended that VLANs are confined on a single access switch rather than span across multiple access switches?

- A. to allow for better convergence time
- B. to prevent the occurrence of Layer 2 loops
- C. to allow for fault isolation
- D. to prevent routing black holes

**Answer: D**

#### NEW QUESTION 14

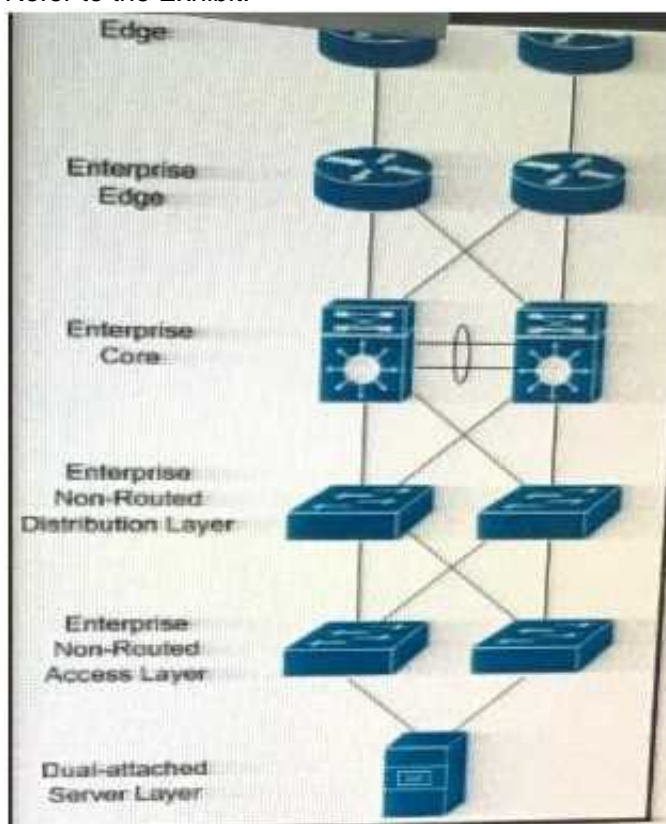
Which option is a design consideration when using routers in a distributed hardware architecture?

- A. Routing information is stored in the RIB and the FIB makes forwarding decisions as programmed on the line card hardware
- B. After a link failure occurs in the core, the RIB continues to forward the traffic while FIB convergence is in progress
- C. BGP routes are stored in the RIB and IGP routes are stored in the FIB
- D. IP routes are stored in the RIB and MPLS labels are stored in the FIB

**Answer: A**

#### NEW QUESTION 19

Refer to the Exhibit.



In which three Layers should you use nonstop Forwarding to reduce service impact in case of failure? (Choose three)

- A. Enterprise Edge

- B. Enterprise Core
- C. Service provider Edge
- D. Dual-attached sever Layer
- E. Enterprise Non-Routed Access Layer
- F. Enterprise Non-Routed Distribution Layer.

**Answer:** ABC

#### NEW QUESTION 21

Which option is a benefit of using N-Port Virtualization?

- A. reduces the amount of domain IDs that are used in the fabric
- B. does not need to create zoning
- C. reduces latency when using local switching on Fibre Channel ports
- D. allows trunking to the upstream switch
- E. does not need to configure the upstream switches

**Answer:** A

#### NEW QUESTION 23

You are implementing a one-to-many multicast solution for a large service provider network. Which technology offers optimal routing of multicast traffic?

- A. PIM sparse mode
- B. PIM SSM
- C. Anycast RP
- D. MSDP
- E. Bidirectional PIM.

**Answer:** B

#### NEW QUESTION 24

What is the definition of TOGAF framework?

- A. A framework for enterprise IP address management (IPAM) based on the IANA trusted IP lease allocation scheme.
- B. A series of tools for process improvement that uses statistical method to reduce defect in process and manufacturing.
- C. A framework for enterprise architecture that provides a comprehensive approach for designing planning implementing and governing enterprise information architecture.
- D. A five-volume framework for service management that covers design transition and delivery ofservice and from which the ISO 20000 was developed.
- E. An ISO framework that establishes a module for network management and contains guidelines for managing object the management database and the application entity.

**Answer:** C

#### NEW QUESTION 29

Which two components are the responsibility of the customers in a platform as a Service offering?  
(Choose two)

- A. Applications
- B. Infrastructure connectivity
- C. Hardware
- D. Data
- E. APIs

**Answer:** AD

#### NEW QUESTION 32

An ISP provides VoIP and internet services to its customers. For security reasons, these services must be transported in different MPLS Layer 3 VPNs over the ISP core network. The customer CEs do not have the ability to segment the services using different VLANs and have only one uplink interface that does not support VLAN tagging. How should you design the network to ensure that VoIP traffic that is received from the CE goes in the VoIP VPN, and that Internet traffic goes into the Internet VPN on the ISP PE devices?

- A. Use a secondary interface IP address to differentiate between VoIP and Internet traffic
- B. Extend the Layer 3 VPN toward the CE
- C. Enable NBAR on the PE to direct the traffic into the correct VRF
- D. Use a subinterface on the PE for each service, VoIP and Internet, with different subnets
- E. Use policy-based routing to direct traffic into the correct VRF

**Answer:** E

#### NEW QUESTION 35

In an OSPF network, users in a particular OSPF non-backbone area are complaining about slow access speeds to a shared corporate resource in another OSPF area. Traceroutes show that the users are taking a suboptimal default route to the destinations. Which solution will improve access speed?

- A. Make the area totally stubby so that the default can be followed along the best path
- B. Create a virtual link between the areas so that traffic can shortcut directly between them

- C. Leak specific summaries on the ABRs for the remote subnets in addition to the default
- D. Implement policy routing to channel the traffic in the optimal direction

**Answer:** C

#### NEW QUESTION 37

When designing a network .Which method can be used to control the exit point for traffic an autonomous system, at the layer 3 control plane?

- A. Prepending AS path.
- B. Tuning the multi-exit discriminator.
- C. Setting the site of Origin extended community.
- D. Tuning the metric of the under-tying IGP.

**Answer:** D

#### NEW QUESTION 41

Why is a redundant PIM stub router topology a bad network design decision?

- A. Multicast convergence takes long
- B. Multicast traffic duplication will occur
- C. It interferes with IGMP snooping
- D. It interfaces with PIM snooping

**Answer:** B

#### NEW QUESTION 43

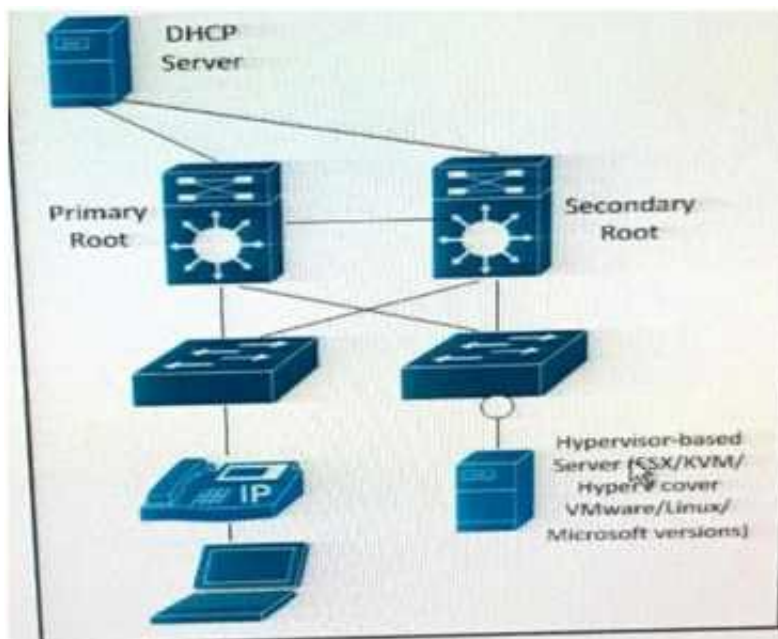
A switched network is being designed to support a manufacturing factory. Due to cost constraints, fiber-based connectivity is not an option. Which design allows for a stable network when there is a risk of interference from the manufacturing hardware in use on the factory floor?

- A. Design the network to include UDLD to detect unidirectional links and take them out of service.
- B. Design the network to include Ether Channel bundles to prevent a single-link failure from taking down a switch interconnection point.
- C. Design the network to include loop guard to prevent a loop in the switched network when a link has too much interference.
- D. Design the network to include Backbone Fast on all devices to accelerate failure convergence times.

**Answer:** B

#### NEW QUESTION 45

Refer to the Exhibit.



The server is running multiple VLANs on its NIC. Which two Layer 2 features should be applied to the network location identified by a circle? (Choose two)

- A. UDLD
- B. BPDU guard
- C. BPDU filtering
- D. Port Fast
- E. Loop guard
- F. PortFast trunk

**Answer:** BF

#### NEW QUESTION 46

An network is designed to use OSPF to reach eBGP peers. Which condition should be avoided in the design to potentially prevent the eBGP peers do not flap continuously in case of link failure?

- A. Disable BGP synchronization.
- B. Advertise IP addresses used on eBGP peer statement via a non-backbone OSPF area.
- C. Advertise via eBGP IP addresses used on eBGP peer statements.
- D. Use an ACL to block BGP in one direction.



Answer: C

#### NEW QUESTION 51

You work as a network designer for a company that is replacing their Frame Relay WAN with an MPLS VPN service, where the PE-to-CE routing protocol is BGP. The company has 3000 routes in their distribution routers, and they would like to advertise their access routers through the MPLS network. Their service provider, however, only supports 1000 prefixes per VRF. Which two design solutions can be applied to ensure that your access routers will be able to reach all devices in your network? (Choose two.)

- A. Configure the distribution routers to send a default route to the MPLS network
- B. Configure null routes and aggregate routes for the prefixes in your network on the distribution routers
- C. Summarize the routes on MPLS WAN interfaces of the distribution routers
- D. Use prefix lists on the distribution routers to control which routes are sent to MPLS network
- E. Configure the access routers to send a default route to the MPLS network

Answer: AC

#### NEW QUESTION 53

You are designing a new multisite data center network within the same city. You are using the newest routers that run OSPF and DWDM point-to-point interfaces for site-to-site connectivity. Your primary objective is to use the fastest possible method for interface failure detection. Which method achieves this objective?

- A. UDLD
- B. Interface event dampening
- C. LoS/AIS event faults
- D. Fast-hello timers

Answer: C

#### NEW QUESTION 54

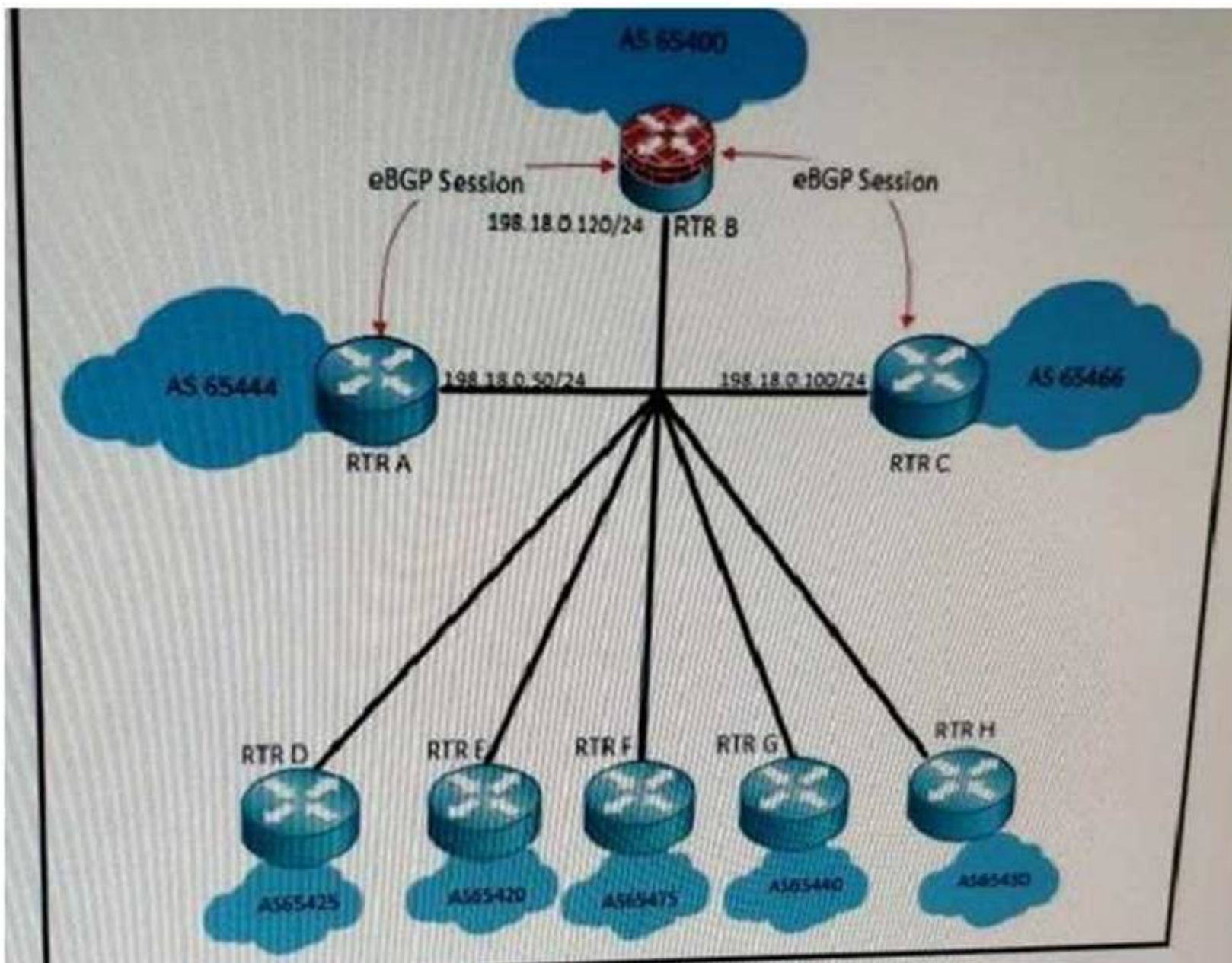
Which three network management requirements are common practices in network design? (Choose three)

- A. Ensure that all network devices have their clocks synchronized.
- B. Collect SNMP poll information for future regression analysis.
- C. Capture both ingress and egress flow-based packets, while avoiding duplication of flows.
- D. Look at average counters instead of instantaneous counters for inconsistent and bursty KPIs, such as CPU utilization and interface utilization.
- E. Validate data plane health, and application and services availability, with synthetic traffic.

Answer: ABD

#### NEW QUESTION 56

Refer to the exhibit.



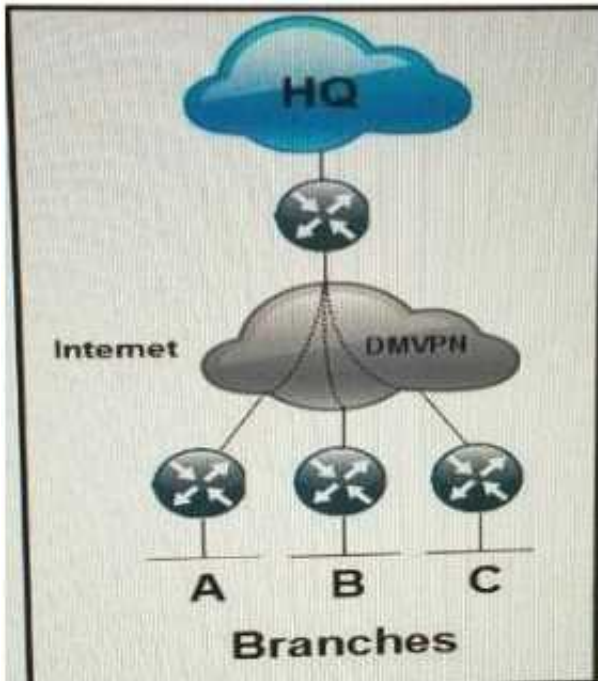
Transit traffic in this large enterprise campus network passes the eBGP core. Per security policy, traffic coming from AS 65444 destined for AS 65466 and vice-versa must pass through AS 65400. An audit discovers that traffic between 65444 and 65466 did not pass through 65400, instead it is communicating directly. How must you design BGP to ensure that the traffic from AS 65444 destined for AS 65466 passes through AS65400 on this broadcast network?

- A. Apply an ACL on AS 65466 to drop the direct traffic between AS 65444 and AS 65466
- B. Apply AS-path prepending on AS 65466 and AS 65444
- C. Apply next-hop self on both BGP neighbors on AS 65400
- D. Apply the MED attribute on the BGP session for AS 65444

**Answer: C**

#### NEW QUESTION 61

Refer to the exhibit.



Which routing solution is the most scalable to connect the branches to the HQ and to connect the branches together over the internet using DMVPN?

- A. EIGRP
- B. EIGRP with the branch routers setup as stubs
- C. OSPF with each branch router as an ABR
- D. IS-IS L2 in all locations
- E. OSPF Area 0 in all locations

**Answer: B**

#### NEW QUESTION 64

Which OSPF design consideration, with regards to simplicity and address preservation, must be considered when connecting two Layer 3 switches directly using 10 GBASE-T cabling and formatting an OSPF neighbor adjacency?

- A. Mesh groups must be included in the design
- B. The OSPF Hello and Dead timers must be tuned to detect failures as quickly as possible
- C. The OSPF network type must be set to point-to-multipoint
- D. An OSPF neighbor adjacency formed over loopback interfaces must be placed in Area 0
- E. The OSPF network type must be set to point-to-point

**Answer: E**

#### NEW QUESTION 69

Which two options are Loop-Free Alternate design considerations? (Choose two)

- A. MPLS TE must be enabled because it is used for building the backup paths
- B. Backup coverage and effectiveness is dependent on the network topology
- C. It can simplify the capacity planning by matching the backup path with the post-convergence path
- D. It provides an optional backup path by avoiding low bandwidth and edge links
- E. It can impact SLA-sensitive appliance by routing traffic to low bandwidth links while IGP convergence is in progress

**Answer: BE**

#### NEW QUESTION 70

You are hired to assist an enterprise customer to design their global WAN network. A protected DWDM circuit with disjoint fiber routes and guaranteed restoration times is ordered to connect two hub sites. Which option is a BFD design consideration in relation to protected DWDM?

- A. BFD failure detection must be faster than DWDM restoration time
- B. The BFD hello timer must match the DWDM circuit restoration time
- C. BFD failure detection must be longer than DWDM restoration time
- D. BFD cannot be used with protected DWDM

**Answer: C**



NEW QUESTION 72

Across a large WAN network, there will be new video traffic being distributed from a single source at any given time however, the video source might originate from different parts of the multicast domain at different times . Which multicast technology provides for this multicast traffic to be distributed with optimal path selection to the source?

- A. Any source Multicast.
- B. PIM sparse mode.
- C. Bidirectional PIM.
- D. Source Specific Multicast.

Answer: D

NEW QUESTION 74

DRAG DROP

Drag and drop the NETCONF layers on the left onto their appropriate description on the left.

transport	defines a set of base protocol operations
messages	provides a communication path between the client and server
operations	provides a framing mechanism for encoding RPCs
content	holds information on data models and protocol operations

- A. Mastered
- B. Not Mastered

Answer: A

Explanation:

operations
transport
messages
content

NEW QUESTION 78

DRAG DROP

An enterprise customer has a national WAN network based on DMVPN over the Internet, with sites located throughout the country. The customer has recently deployed VoIP throughout the entire network , and users report that it takes up to 2 seconds to establish a telephone call to an IP telephone at another office network. Drag and drop the root cause and the corresponding design solution from the left onto the correct targets on the right Not all options are used

VoIP is not supported over the Internet.	Root Cause
DMVPN spoke-to-spoke tunnels take a few seconds to establish the encryption.	
DMVPN does not support per-tunnel QoS.	Corresponding Solution
The network is using DMVPN Phase 2.	
Replace DMVPN on the WAN with Layer 3 VPN.	
Replace DMVPNs on the WAN with an ELAN solution.	
Use DMVPNs to set up the tunnels and GETVPN inside the tunnels to maintain the encryption.	
Per-tunnel QoS must be enabled at the DMVPN hub site.	
Migrate from DMVPN Phase 2 to DMVPN Phase 3.	

- A. Mastered

B. Not Mastered

**Answer:** A

**Explanation:**

DMVPN spoke to spoke tunnels take a few second  
 Use DMVPN to set up tunnels and GETVPN for encryption

**NEW QUESTION 83**

A DMVPN network is being deployed for 10 branch sites to connect to the central headquarters over the Internet. Each branch site connects to the internet via a 1.5 Mb/s ADSL line, and the headquarters connects to the Internet over a 100Mb/s circuit limited to 20 Mb/s by the service provider. Which QoS mechanism if any, do you recommend at the headquarters location?

- A. Rate-limiting the 100 Mb/s circuit to 20 Mb/s
- B. Applying hierarchical QoS with parent policy for the overall circuit and child policy for the spokes
- C. Traffic shaping the 100 Mb/s circuit to 20 Mb/s
- D. QoS is not required in this instance due to maximum traffic being received by the branches being 15 Mb/s

**Answer:** B

**NEW QUESTION 85**

Which three network management requirements are common practices in network design? (Choose three)

- A. Collect RMON poll information for future regression analysis
- B. Ensure that all network devices have their clocks synchronized
- C. Look at average counters instead of instantaneous counters for inconsistent and bursty KPIs, such as CPU utilization and interface utilization.
- D. Collect SNMP poll information for future regression analysis
- E. Validate data plane health, application and services availability with synthetic traffic
- F. Capture both ingress and egress flow-based packet
- G. While avoiding duplications of flows

**Answer:** BCD

**NEW QUESTION 86**

Refer to the exhibit.



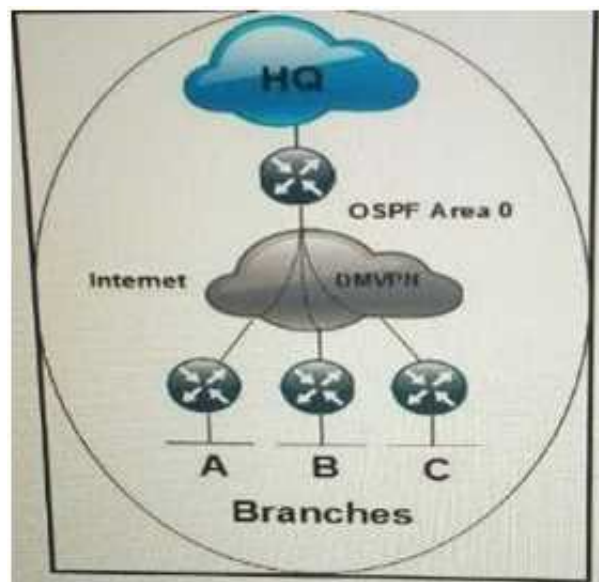
This enterprise customer wants to stream one-way video from their head office to eight branch offices using multicast. Their current service provider provides a Layer 3VPN solution and manages the CE routers, but they do not currently multicast. Which solution quickly allows this multicast traffic to go through while allowing for future scalability?

- A. Enable a GRE tunnel between nodes C1 and C4
- B. Enable a GRE tunnel between nodes CE1 and CE2
- C. Enable a GRE tunnel between nodes C2 and C4
- D. Implement hub and spoke MPLS VPN over DMVPN(also known as 2547oDMVPN) between CE1 and CE2
- E. The service provider must provide a Draft Rosen Solution to enable a GRE tunnel node PE1 and PE2

**Answer:** B

**NEW QUESTION 87**

Refer to the exhibit.



Each branch network must connect to the HQ and other branch networks over the phase 2 DMVPN network using a single tunnel interface. OSPF is running over the DMVPN network. Which network type is compatible with the DMVPN tunnel and ensures that the next hop of any route is unchanged?

- A. Point-to-point
- B. Point-to-multipoint
- C. Broadcast
- D. Nonbroadcast

**Answer: C**

**NEW QUESTION 90**

The service provider that you work for wants to offer IPv6 internet service to its customers without upgrading all of its access equipment to support IPv6, which transition technology do you recommend?

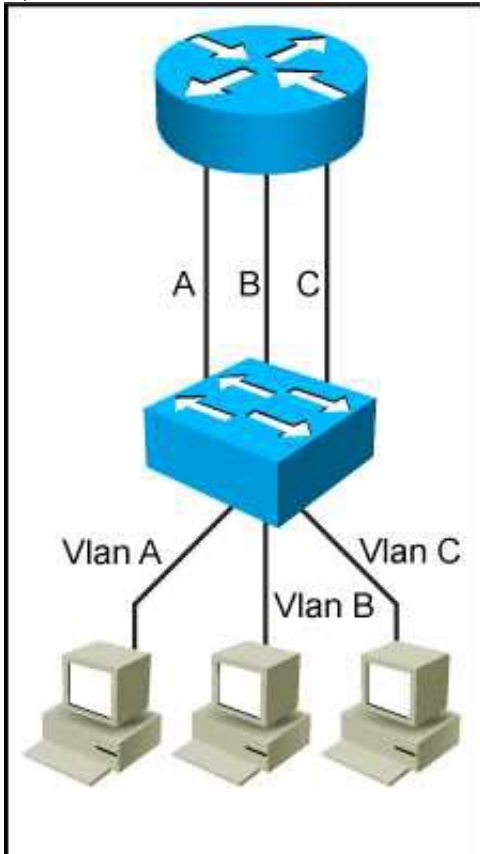
- A. NAT64
- B. CGN
- C. Dual-stack CPE
- D. 6RD

**Answer: D**

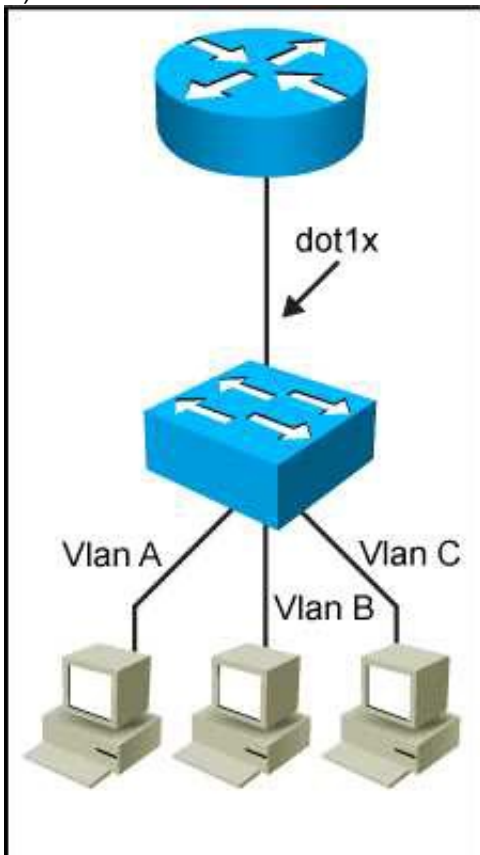
**NEW QUESTION 92**

Which network topology is characterized by a link fate-sharing situation?

A)

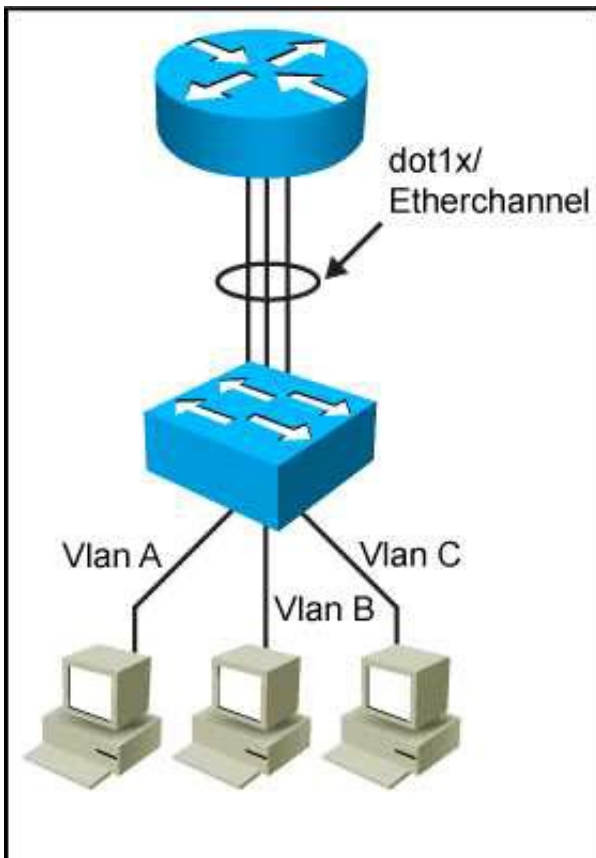


B)

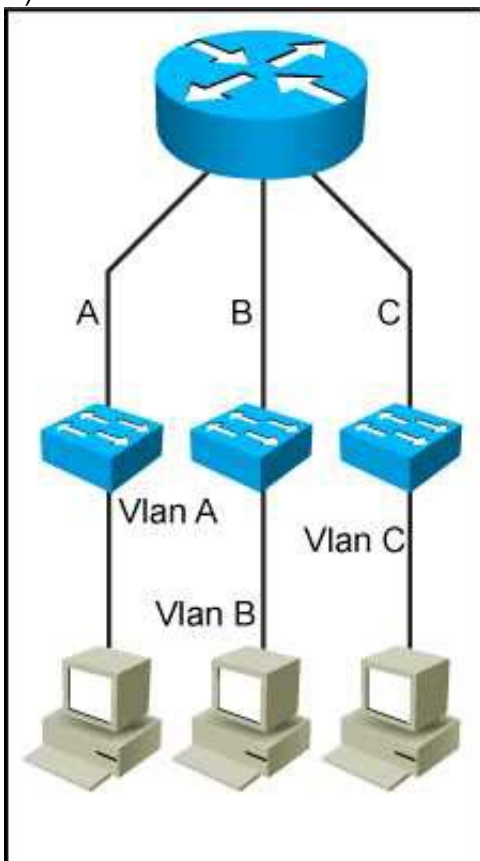


C)





D)

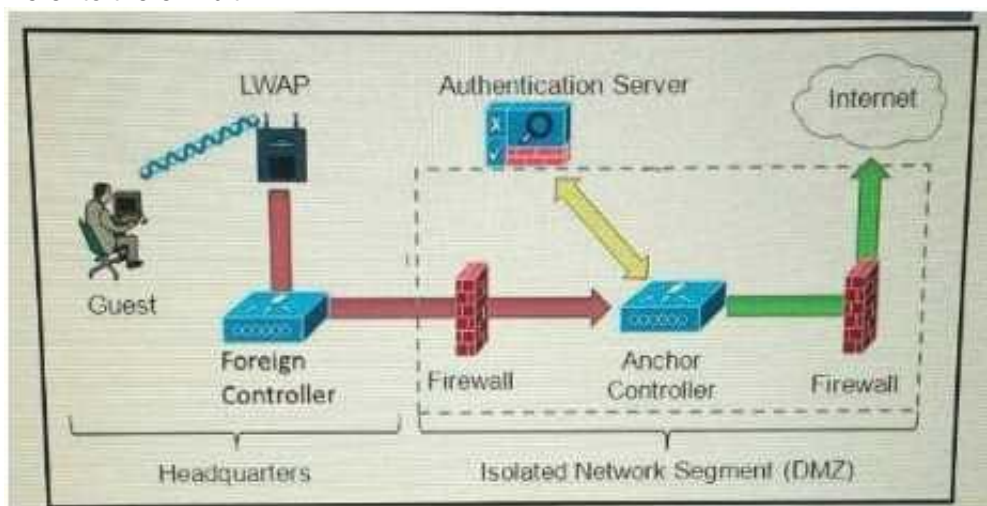


- A. Exhibit A
- B. Exhibit B
- C. Exhibit C
- D. Exhibit D

**Answer: B**

#### NEW QUESTION 96

Refer to the exhibit.



Which solution must be used to send traffic from the foreign wireless LAN controller to the anchor wireless LAN controller?

- A. Encapsulate packets into an EoIP tunnel and send them to the anchor controller
- B. Send packets from the foreign controller to the anchor controller via Layer 3 MPLS VPN or VRF-Lite
- C. Send packets from the foreign controller to the anchor controller via IPinIP or IPsec tunnel
- D. Send packets without encapsulation to the anchor controller over the routed network

**Answer:** A

**NEW QUESTION 98**

Which three items do you recommend for control plane hardening of an infrastructure device?  
(Choose three)

- A. To enable unused services
- B. Warning banners
- C. Routing protocol authentication
- D. Control Plane Policing
- E. Redundant AAA servers
- F. SNMPv3

**Answer:** CDF

**NEW QUESTION 103**

Which native mechanism does OSPF use to prevent loops in MPLS VPNs?

- A. CE devices that run OSPF set the DN bit toward the PE router
- B. PE devices that run OSPF clear the DN bit toward the CE router
- C. CE devices that run OSPF clear the DN bit toward the PE router
- D. Creation of PE to PE OSPF sham link across the MPLS-created super backbone
- E. PE routers verify OSPF domain IDs used by CE OSPF processes
- F. PE devices that run OSPF set the DN bit toward the CE router

**Answer:** F

**NEW QUESTION 108**

An enterprise network has two core routers that connect to 200 distribution routers and uses full-mesh iBGP peering between these routers as its routing method. The distribution routers are experiencing high CPU utilization due to the BGP process. Which design solution is the most effective?

- A. Increase the memory on the distribution routers
- B. Increase the memory on the core routers
- C. Implement route reflectors on the two core routers
- D. Increase bandwidth between the core routers
- E. Implement eBGP between the core and distribution routers

**Answer:** C

**NEW QUESTION 111**

Which two application requirements are mandatory for traffic to receive proper treatment when placed in the priority queue? (Choose two)

- A. WRED drop treatment
- B. Small transactions (HTTP – like behavior)
- C. Tolerance to packet loss
- D. Intolerance to jitter
- E. TCP based application

**Answer:** CD

**NEW QUESTION 114**

Which two functions are performed at the distribution layer of the three-layer hierarchical network design model? (Choose two).

- A. Fault isolation
- B. QoS classification and marking boundary
- C. Fast transport
- D. Reliability
- E. Load balancing

**Answer:** AE

**NEW QUESTION 115**

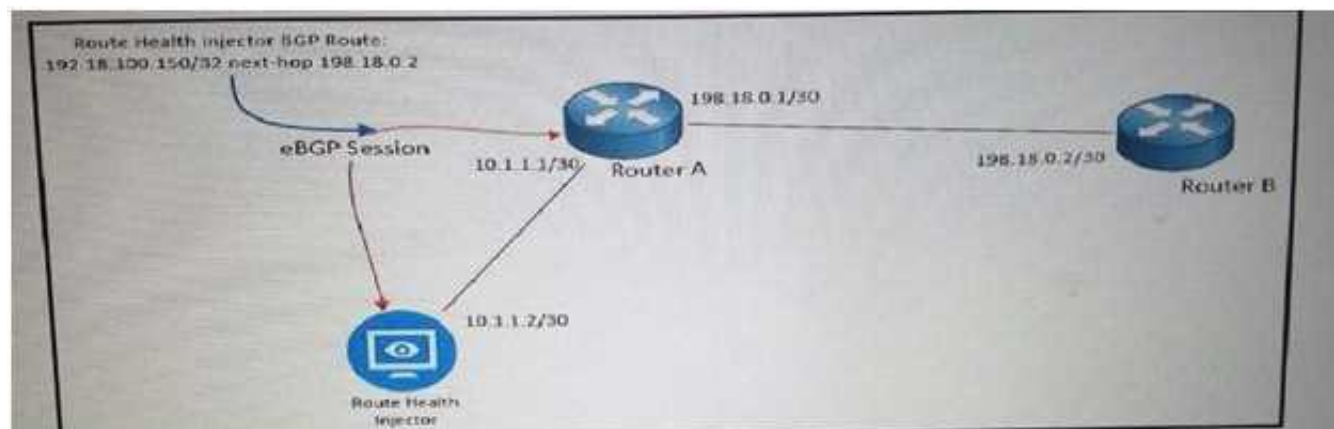
Which mechanism enables small, unmanaged switches to plug into ports of access switches without risking switch loops?

- A. PortFast
- B. UDLD
- C. Root guard
- D. BPDU guard

**Answer:** C

**NEW QUESTION 118**

Refer to the exhibit.



As part of your design to monitor reachable services, a route health injector has just been deployed on the network. The route health injector injects /32 host routes into BGP with the next hop of 192.18.0.2, but the /32 routes are not being installed into the RIB or FIB of Router

- A. Which BGP feature must be deployed to make be deployed to make the design to work?
- B. BGP community attributes
- C. MP-BGP
- D. BGP AS-Path prepending
- E. eBGP multihop attribute

**Answer:** A

#### NEW QUESTION 122

Which main IoT migration aspect should be reviewed for a manufacturing plant?

- A. Sensors
- B. Security
- C. Applications
- D. Wi-Fi Infrastructure
- E. Ethernet Switches

**Answer:** A

#### NEW QUESTION 125

What is design considerations of policy-based routing?

- A. It decreases failure detection time
- B. It can create microloops during network reconvergence
- C. It routes traffic destined to a set of users through different exit points
- D. It uses RSVP to differentiate traffic flows, so queuing mechanisms can prioritize them

**Answer:** B

#### NEW QUESTION 128

Which interconnectivity method offers the fastest convergence in the event of a unidirectional issue between three Layer 3 switches connected together with routed links in the same rack in a data center?

- A. Fiber Ethernet connectivity with UDLD enabled
- B. Copper Ethernet connectivity with BFD enabled
- C. Fiber Ethernet connectivity with BFD enabled
- D. Copper Ethernet connectivity with UDLD enabled

**Answer:** C

#### NEW QUESTION 130

Which four resources does Cisco Cloud Center provision in an ACL environment? (Choose four)

- A. VLAN Pool
- B. Contracts
- C. End point Group (EPG)
- D. VRF
- E. Subject/Filters
- F. Application Network Profile (ANP)

**Answer:** BCEF

#### NEW QUESTION 133

Which effect of designing a Layer 2 network using the PortFast fast feature with PVST+ is true?

- A. It shuts down the port when receiving the superior BPDU
- B. It accelerates the network convergence on the trunk uplinks
- C. In combination with BPDU filtering, it causes the switch port to stay in the forwarding state
- D. It moves the switch port directly to the forwarding state

**Answer:** D



#### NEW QUESTION 137

Your customer asked you to redesign there is-IS network to reduce to a minimum the number of adjacencies because the network has several routers running L1/L2 mode on the sme Ethernet segment. Which action do you recommend?

- A. Define only one router on the segment to be DIS
- B. Make the interface priority on the backup DIS lower than the primary DIS
- C. Change half the routers to L1 routers and half to L2 routers
- D. Change all routers to a single-level area

**Answer: D**

#### NEW QUESTION 138

After a large EIGRP network had automatic summarization enabled throughout, it started experiencing routing loops. Which action should you take to quickly resolve the routing loops yet to perform summarization?

- A. Redistribute connected routes at major IP networks boundaries
- B. Redesign the IP addressing scheme
- C. Increase the AD of the automatically summarized routes
- D. Replace the automatic summarization with more specific summary routes

**Answer: D**

#### NEW QUESTION 140

Assume that no multicast optimization is done on LAN switches A and B. Which two features can be used to optimize multicast traffic forwarding in this situation? (Choose two.)

- A. Enable IGMP snooping querier on both switches.
- B. Configure a static MAC entry for the multicast server.
- C. Disable IGMP snooping on both switches.
- D. Disable the IGMP query election process.
- E. Enable PIM snooping on both switches.

**Answer: AC**

#### NEW QUESTION 142

Which two IoT use cases require the low latency and high reliability that 5G networks provide?

- A. Smart Home
- B. Automotive
- C. Health and Wellness
- D. Smart Cities
- E. Sports and Fitness

**Answer: BC**

#### NEW QUESTION 147

Which two conditions must be met for EIGRP to maintain an alternate loop-free path to a remote network? (Choose two)

- A. The Reported Distance from a successor is lower than the local Feasible Distance
- B. The Reported Distance from a successor is higher than the local Feasible Distance
- C. A feasible successor must be present
- D. The feasible Distance from a successor is lower than the local Reported Distance
- E. The feasibility condition do not need to be met

**Answer: AC**

#### NEW QUESTION 152

When designing fast convergence on a network using loop-free alternate, on which two basis can the next-hop routes be precomputed? (Choose two)

- A. Per neighbor
- B. Per network type
- C. Per link
- D. Per prefix
- E. Per failure type

**Answer: CD**

#### NEW QUESTION 156

What is a design benefit of PortFast?

- A. PortFast allows small, unmanaged switches to be plugged into ports of access switches without risking switch loops
- B. PortFast disables spanning-tree on the port, which puts the port into the forwarding state immediately after it is connected
- C. Portfast does not generate a spanning-tree topology change when a station on a port is connected or disconnected
- D. PortFast detects one-way communications on the physical port, when prevents switch loops
- E. PortFast prevents switched traffic from traversing suboptimal paths on the network
- F. PortFast prevents switch loops that are caused by a unidirectional point-to-point link condition on Rapid PVST+ and MST

Answer: B

#### NEW QUESTION 160

A service provider must provide Internet connectivity to an MPLS Layer 3 VPN customer. Which solution allows this customer to have Internet access?

- A. Implement a global default route with a next hop in the VRF late on PE
- B. Implement policy-based routing between PE and CE
- C. Implement a default route in the VRF with a next hop in the global routing table of PE
- D. Implement destination NAT between the VRF and the global RIB of PE

Answer: C

#### NEW QUESTION 161

When a multiprotocol routing environment is designed to have several routers redistributing among the routing domains, how can routing loops be avoided?

- A. By implementing spanning tree
- B. By activating split horizon
- C. By using the AS-path attribute
- D. By using route tags

Answer: D

#### NEW QUESTION 163

As part of network design, two geographically separated data centers must be interconnected using Ethernet-over-MPLS pseudowire. The link between the sites is stable, the topology has no apparent loops, and the root bridges for the respective VLANs are stable and unchanging. Which aspect must be the part of the design to mitigate the risk of connectivity issues between the data centers?

- A. Enable Spanning Tree on one data center, and Rapid Reconfiguration of Spanning tree on the other
- B. Ensure that the spanning tree diameter for one or more VLANs is not too large.
- C. Enable UDLD on the link between the data centers.
- D. Enable root guard on the link between the data centers.

Answer: B

#### NEW QUESTION 165

Which are two data plane hardening techniques? (Choose two)

- A. Infrastructure ACLs
- B. Control Plane Policing
- C. Redundant AAA servers
- D. Disable unused services
- E. Routing protocol authentication
- F. SNMPv3
- G. Warning banners

Answer: AB

#### NEW QUESTION 167

Which two conditions are required for successful route aggregation? (Choose two)

- A. Contiguous prefix allocation
- B. Logical separation between zones or layers within networks
- C. Matching traffic aggregation with route aggregation locations
- D. Consistent prefix allocations per network
- E. Physical separation between zones or layers within networks

Answer: BD

#### NEW QUESTION 168

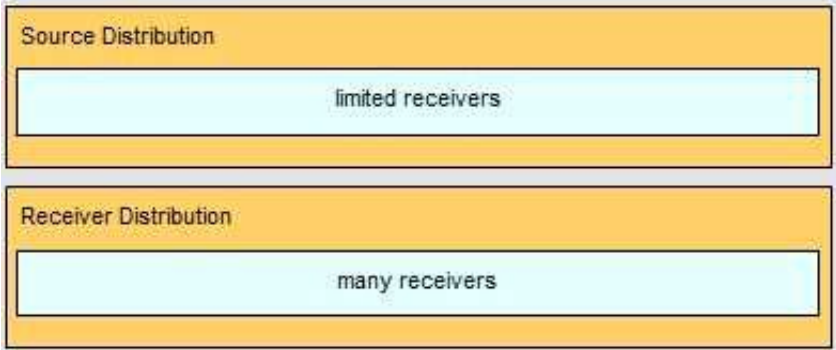
DRAG DROP

When developing a multicast network design, SSM should be used for which type of source and receiver distribution?	
limited sources	Source Distribution
many sources	Target
limited receivers	Receiver Distribution
many receivers	Target

- A. Mastered
- B. Not Mastered

Answer: A

Explanation:



NEW QUESTION 169

DRAG DROP

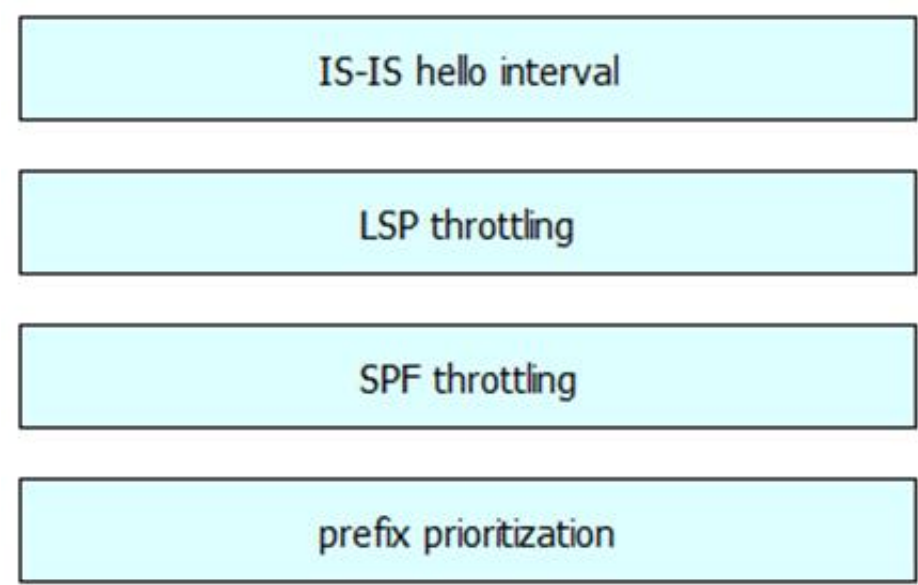
As a network designer for a major multiservice network, your first assignment is to improve the IS-IS convergence to meet application requirements. Drag and drop the convergence tools or techniques to be used on your proposal from the left into the corresponding convergence phase on the right.

SPF throttling	event detection
LSA throttling	event propagation
LSP throttling	event processing
IS-IS hello interval	RIB updating
limit LSP flooding	
prefix prioritization	

- A. Mastered
- B. Not Mastered

Answer: A

Explanation:



A vertical list of four light blue rectangular boxes containing the following text from top to bottom: 'IS-IS hello interval', 'LSP throttling', 'SPF throttling', and 'prefix prioritization'.

NEW QUESTION 172

.....



## Thank You for Trying Our Product

### We offer two products:

1st - We have Practice Tests Software with Actual Exam Questions

2nd - Questions and Answers in PDF Format

### 352-001 Practice Exam Features:

- \* 352-001 Questions and Answers Updated Frequently
- \* 352-001 Practice Questions Verified by Expert Senior Certified Staff
- \* 352-001 Most Realistic Questions that Guarantee you a Pass on Your First Try
- \* 352-001 Practice Test Questions in Multiple Choice Formats and Updates for 1 Year

**100% Actual & Verified — Instant Download, Please Click**  
**[Order The 352-001 Practice Test Here](#)**