

## 350-901 Dumps

### Developing Applications using Cisco Core Platforms & APIs

<https://www.certleader.com/350-901-dumps.html>



**NEW QUESTION 1**

Which two situations are flagged by software tools designed for dependency checking in continuous integration environments, such as OWASP? (Choose two.)

- A. publicly disclosed vulnerabilities related to the included dependencies
- B. mismatches in coding styles and conventions in the included dependencies
- C. incompatible licenses in the included dependencies
- D. test case failures introduced by bugs in the included dependencies
- E. buffer overflows to occur as the result of a combination of the included dependencies

**Answer:** AE

**NEW QUESTION 2**

Which database type should be used with highly structured data and provides support for ACID transactions?

- A. time series
- B. document
- C. graph
- D. relational

**Answer:** D

**NEW QUESTION 3**

Which two statements about a stateless application are true? (Choose two.)

- A. Different requests can be processed by different servers.
- B. Requests are based only on information relayed with each request.
- C. Information about earlier requests must be kept and must be accessible.
- D. The same server must be used to process all requests that are linked to the same state.
- E. No state information can be shared across servers.

**Answer:** AB

**NEW QUESTION 4****Paginating the Results**

By adding the `page-size` operator to the query URI you can divide the query results into groups (pages) of objects using the following syntax. The operand specifies the number of objects in each group.

**`page-size = number-of-objects-per-page`**

By adding the `page` operator in the query URI, you can specify a single group to be returned using the following syntax. The pages start from number 0.

**`page = page-number`**

This example shows you how to specify 15 fault instances per page in descending order, returning only the first page:

Refer to the exhibit. Many faults have occurred in the ACI environment and a sample of them needs to be examined. Which API call retrieves faults 30 through 45?

- A. GET `https://apic-ip-address/api/class/faultInfo.json?order-by=faultinst.severity|desc&page=1&page-size=15`
- B. GET `https://apic-ip-address/api/class/faultInfo.json?order-by=faultinst.severity|desc&page=2&page-size=15`
- C. GET `https://apic-ip-address/api/class/faultInfo.json?order-by=faultinst.severity|desc&page=30`
- D. GET `https://apic-ip-address/api/class/faultInfo.json?order-by=faultinst.severity|desc&page=2&page-size=30`

**Answer:** D

**NEW QUESTION 5**

Refer to the exhibit. The cURL POST request creates an OAuth access token for authentication with FDM API requests. What is the purpose of the file “@token\_data” that cURL is handling?

- A. This file is a container to log possible error responses in the request.
- B. This file is given as input to store the access token received from FDM.
- C. This file is used to send authentication related headers.
- D. This file contains raw data that is needed for token authentication.

**Answer:** B

**NEW QUESTION 6**

User report that they can no longer process transactions with the online ordering application, and the logging dashboard is displaying these messages.

Fri Jan 10 19:37:31.123 EST 2020 [FRONTEND] INFO: Incoming request to add item to cart from user 45834534858 Fri Jan 10 19:37:31 247 EST 2020

[BACKEND] INFO: Attempting to add item to cart

Fri Jan 10 19:37:31 250 EST 2020 [BACKEND] ERROR: Failed to add item: MYSQLDB ERROR: Connection refused What is causing the problem seen in these log messages?

- A. The database server container has crashed.
- B. The backend process is overwhelmed with too many transactions.
- C. The backend is not authorized to commit to the database.
- D. The user is not authorized to add the item to their cart.

**Answer:** A

#### NEW QUESTION 7

An Etag header is included in the HTTP response for an API resource. What are two benefits of using the value of the Etag for future interactions involving the same API resource? (Choose two.)

- A. caching and optimization of response payloads
- B. creating conditional requests
- C. categorizing and comparing this API resource with others
- D. checking the integrity of the resource
- E. requesting the list of operations authorized for this resource

**Answer:** AB

#### NEW QUESTION 8

```
response = requests.get(url)
if response.status_code != 200:
    error_message = "Unexpected HTTP Response code: {}".format(response.status_code)
    raise Exception(error_message)
data = response.json()
```

Refer to the exhibit. This snippet of a script has recently started exiting abnormally with an exception stating "Unexpected HTTP Response code: 429". Which solution handles rate limiting by the remote API?

- A.
- ```
response = requests.get(url)
if response.status_code == 429:
    backoff_seconds = int(response.headers['Retry-After'])
    sleep(backoff_seconds)
elif response.status_code != 200:
    error_message = "Unexpected HTTP Response code: {}".format(response.status_code)
    raise Exception(error_message)
data = response.json()
```
- B.
- ```
response = requests.get(url)
if response.status_code != 200 and response.status_code != 429:
    error_message = "Unexpected HTTP Response code: {}".format(response.status_code)
    raise Exception(error_message)
data = response.json()
```
- C.
- ```
response = requests.get(url)
if response.status_code != 200 and response.status_code != 429:
    backoff_seconds = int(response.headers['Retry-After'])
    sleep(backoff_seconds)
    error_message = "Unexpected HTTP Response code: {}".format(response.status_code)
    raise Exception(error_message)
data = response.json()
```
- D.
- ```
response = requests.get(url)
if response.status_code == 429:
    backoff_seconds = int(response.headers['Retry-After'])
    sleep(backoff_seconds)
    response = requests.get(url)
elif response.status_code != 200:
    error_message = "Unexpected HTTP Response code: {}".format(response.status_code)
    raise Exception(error_message)
data = response.json()
```

**Answer:** D

#### NEW QUESTION 9



An application uses OAuth to get access to several API resources on behalf of an end user. What are two valid parameters to send to the authorization server as part of the first step of an authorization code grant flow? (Choose two.)

- A. URI to which the authorization server will send the user-agent back when access is granted or denied
- B. list of the API resources that the application is requesting to access
- C. secret that was generated by the authorization server when the application registered as an OAuth integration
- D. list of scopes that correspond to the API resources to which the application is requesting to access
- E. name of the application under which the application registered as an OAuth integration

**Answer:** AC

#### NEW QUESTION 10

Which snippet presents the correct API call to configure, secure, and enable an SSID using the Meraki API?

- A. 

```
curl -X PUT \
--url 'https://api.meraki.com/api/v0/networks/:networkId/ssids/2' \
-H 'X-Cisco-Meraki-API-Key: 15da0c6ffff295f16267f88f98694cf29a86ed87' \
-H 'Accept: application/json' \
-H 'Content-type: application/json' \
--data-raw '{
"name": "My SSID",
"enabled": false,
"authMode": "psk",
"encryptionMode": "wpa",
"psk": "meraki123",
"wpaEncryptionMode": "WPA1 and WPA2"
}'
```
- B. 

```
curl -X PUT \
--url 'https://api.meraki.com/api/v0/networks/:networkId/ssids/2' \
-H 'X-Cisco-Meraki-API-Key: 15da0c6ffff295f16267f88f98694cf29a86ed87' \
-H 'Accept: application/json' \
-H 'Content-type: application/json' \
--data-raw '{
"name": "My SSID",
"enabled": true,
"authMode": "psk",
"encryptionMode": "wpa",
"psk": "meraki123",
"wpaEncryptionMode": "WPA1 and WPA2"
}'
```
- C. 

```
curl -X PUT \
--url 'https://api.meraki.com/api/v0/networks/:networkId/ssids/2' \
-H 'X-Cisco-Meraki-API-Key:
15da0c6ffff295f16267f88f98694cf29a86ed87' \
-H 'Accept: application/json' \
-H 'Content-type: application/json' \
--data-raw '{
"enabled": true,
"useVlanTagging": true
}'
```
- D. 

```
curl -X PUT \
--url 'https://api.meraki.com/api/v0/networks/:networkId/ssids/2' \
-H 'X-Cisco-Meraki-API-Key: 15da0c6ffff295f16267f88f98694cf29a86ed87' \
-H 'Accept: application/json' \
-H 'Content-type: application/json' \
--data-raw '{
"name": "My SSID",
"enabled": true,
}'
```

**Answer:** B

#### NEW QUESTION 10

The UCS Python SDK includes modules for Service Profile template creation. Which two UCS Service Profile template types are supported? (Choose two.)

- A. initial-template
- B. updating-template
- C. abstract-template
- D. attached-template

E. base-template

**Answer:** AB

#### NEW QUESTION 13

A container running a Python script is failing when it reaches the integration testing phase of the CI/CD process. The code has been reviewed thoroughly and the build process works on this container and all other containers pass unit and integration testing. What should be verified to resolve the issue?

- A. that the correct port is exposed in the Dockerfile
- B. that the necessary modules and packages are installed on build
- C. that the script is running from the right directory
- D. that the Python version of the container image is correct

**Answer:** B

#### NEW QUESTION 14

On a Cisco Catalyst 9300 Series Switch, the guest shell is being used to create a service within a container. Which change is needed to allow the service to have external access?

- A. Apply ip nat overload on VirtualPortGroup0.
- B. Apply ip nat inside on Interface VirtualPortGroup0.
- C. Apply ip nat outside on Interface VirtualPortGroup0.
- D. Apply ip nat inside on Interface GigabitEthernet1.

**Answer:** B

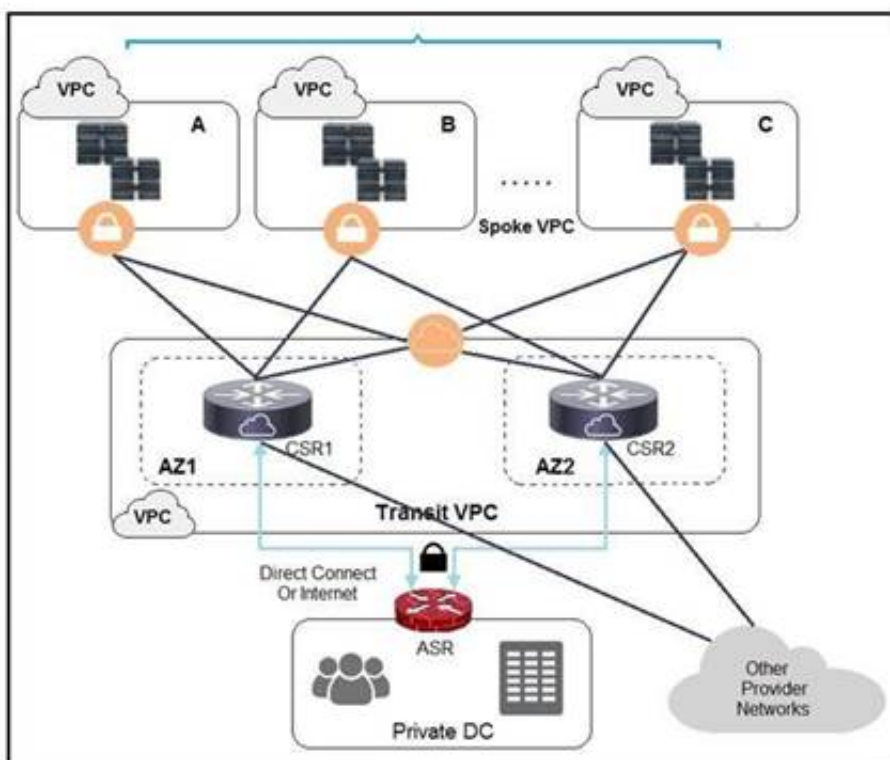
#### NEW QUESTION 16

An application has initiated an OAuth authorization code grant flow to get access to an API resource on behalf of an end user. Which two parameters are specified in the HTTP request coming back to the application as the end user grants access? (Choose two.)

- A. access token and a refresh token with respective expiration times to access the API resource
- B. access token and expiration time to access the API resource
- C. redirect URI a panel that shows the list of permissions to grant
- D. code that can be exchanged for an access token
- E. state can be used for correlation and security checks

**Answer:** AB

#### NEW QUESTION 20



Refer to the exhibit. A company has extended networking from the data center to the cloud through Transit VPC. Which two statements describe the benefits of this approach? (Choose two.)

- A. Dynamic routing combined with multi-AZ- deployment creates a robust network infrastructure.
- B. VPC virtual gateways provide highly available connections to virtual networks.
- C. Dedicated VPC simplifies load balancing by combining internal and external web services.
- D. VPC virtual gateways provide more secure connections to virtual networks.
- E. Dedicated VPC simplifies routing by not combining this service with other shared services.

**Answer:** BD

#### NEW QUESTION 22

Which two countermeasures help reduce the risk of playback attacks? (Choose two.)

- A. Store data in a NoSQL database.

- B. Implement message authentication (HMAC).
- C. Enable end-to-end encryption.
- D. Remove stack traces from errors.
- E. Use short-lived access tokens.

**Answer:** BE

#### NEW QUESTION 26

Which type of file is created from issued intermediate, root, and primary certificates for SSL installation on a server?

- A. DER
- B. CSR
- C. PEM
- D. CRT

**Answer:** C

#### NEW QUESTION 28

```
apiVersion: v1
clusters:
- cluster:
  certificate-authority: fake-ca-file
  server: https://1.2.3.4
  name: development
- cluster:
  insecure-skip-tls-verify: true
  server: https://5.6.7.8
  name: scratch
contexts:
- context:
  cluster: development
  namespace: frontend
  user: developer
  name: dev-frontend
- context:
  cluster: development
  namespace: storage
  user: developer
  name: dev-storage
- context:
  cluster: scratch
  namespace: default
  user: experimenter
  name: exp-scratch
current context: ""
kind: Config
preferences: {}
users:
- name: developer
  user:
    client-certificate: fake-cert-file
    client-key: fake-key-file
- name: experimenter
  user:
    password: some-password
    username: exp
```

Refer to the exhibit. A kubeconfig file to manage access to clusters is provided. How many clusters are defined and which of them are accessed using username/password authentication versus certificate?

- A. two clusters; scratch
- B. three clusters; scratch
- C. three clusters; development
- D. two clusters; development

**Answer:** C

#### NEW QUESTION 29

A heterogeneous network of vendors and device types needs automating for better efficiency and to enable future automated testing. The network consists of switches, routers, firewalls and load balancers from different vendors, however they all support the NETCONF/RESTCONF configuration standards and the YAML models with every feature the business requires. The business is looking for a buy versus build solution because they cannot dedicate engineering resources, and they need configuration diff and rollback functionality from day 1.

Which configuration management for automation tooling is needed for this solution?

- A. Ansible
- B. Ansible and Terraform
- C. NSO
- D. Terraform
- E. Ansible and NSO

**Answer:** E

**NEW QUESTION 32**

Application sometimes store configuration as constants in the code, which is a violation of strict separation of configuration from code. Where should application configuration be stored?

- A. environment variables
- B. YAML files
- C. Python libraries
- D. Dockerfiles
- E. INI files

**Answer:** B

**NEW QUESTION 33**

.....



## Thank You for Trying Our Product

\* 100% Pass or Money Back

All our products come with a 90-day Money Back Guarantee.

\* One year free update

You can enjoy free update one year. 24x7 online support.

\* Trusted by Millions

We currently serve more than 30,000,000 customers.

\* Shop Securely

All transactions are protected by VeriSign!

**100% Pass Your 350-901 Exam with Our Prep Materials Via below:**

<https://www.certleader.com/350-901-dumps.html>