

Exam Questions 300-425

Designing Cisco Enterprise Wireless Networks (ENWLSD)

<https://www.2passeasy.com/dumps/300-425/>



NEW QUESTION 1

Which UDP port numbers are used for exchange mobility packets in an AireOS wireless deployment?

- A. UDP 16666 for control plane, EoIP (IP protocol 97) for data plane
- B. UDP 16668 for control plane, UDP 16667 for data plane
- C. UDP 16667 for control plane, UDP 16666 for data plane
- D. UDP 16666 for control plane, UDP 16667 for data plane

Answer: D

NEW QUESTION 2

An engineer is designing a wireless deployment for a university auditorium. Which two features can be used to help deal with the issues introduced by high AP count? (Choose two.)

- A. TSPEC
- B. RXSOP
- C. TPC
- D. LSS
- E. DFS

Answer: CE

NEW QUESTION 3

A network administrator of a global organization is collapsing all controllers to a single cluster located in central Europe. Which concern must addressed?

- A. Some channels may not be available consistently across the organization.
- B. Different RF policies per office are not available in this configuration.
- C. Syslog must be configured to the time-zone of the NMS platform.
- D. Centralized controllers cannot uniformly authenticate global users.

Answer: C

NEW QUESTION 4

A high-density wireless network is designed. Which Cisco WLC configuration setting must be incorporated in the design to encourage clients to use the 5 GHz spectrum?

- A. Band Select
- B. RRM
- C. Cisco Centralized Key Management
- D. load balancing

Answer: A

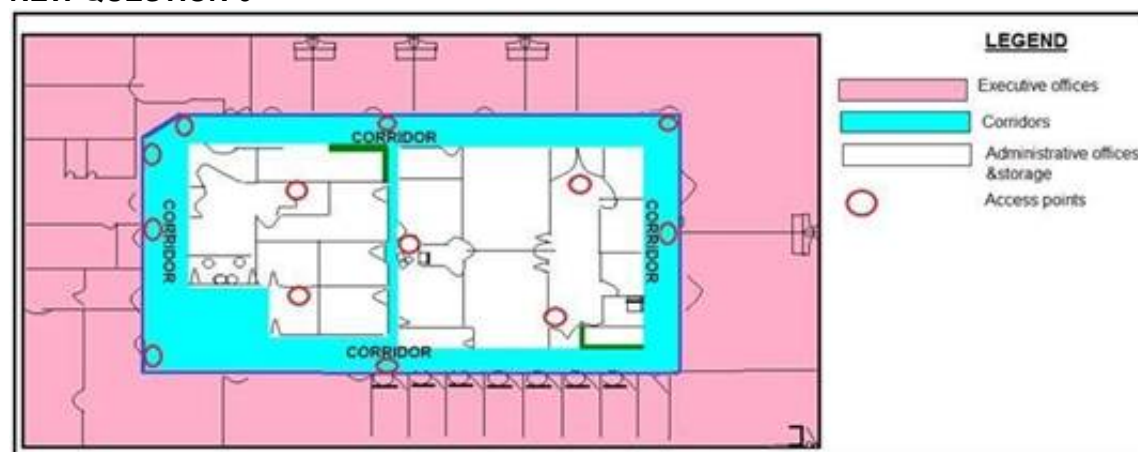
NEW QUESTION 5

A wireless engineer is hired to design a network for a technology company. The company campus has four buildings and a warehouse with access points that provide full wireless coverage as well as a pair of WLCs located in the core of the network. Which type of wireless architecture is being used?

- A. unified deployment
- B. autonomous deployment
- C. centralized deployment
- D. distributed deployment

Answer: C

NEW QUESTION 6



Refer to the exhibit. What is the main reason why the Wi-Fi design engineer took a different approach than installing the APs in the offices, even though that installation provides better coverage?

- A. aesthetics
- B. transmit power considerations
- C. antenna gain
- D. power supply considerations

Answer: B

NEW QUESTION 7

A rapidly expanding company has tasked their network engineer with wirelessly connecting a new cubicle area with Cisco workgroup bridges until the wired network is complete. Each of 42 new users has a computer and VoIP phone. How many APs for workgroup bridging must be ordered to keep cost at a minimum while connecting all devices?

- A. 4
- B. 5
- C. 6
- D. 7

Answer: A

NEW QUESTION 8

An engineer has performed a predictive site survey for high-speed data and voice in an indoor office. What is the recommended data rate with -67 dBm signal level for optimal VoWLAN design?

- A. 6 Mbps on 802.11 bgn
- B. 24 Mbps on 802.11 bgn
- C. 12 Mbps on 802.11 an
- D. 24 Mbps on 802.11 an

Answer: B

NEW QUESTION 9

An engineer has configured guest anchoring for a newly created SSD however, the mobility tunnels are not up, and EPING is failing from the foreign WLC to the anchor WLC. Which traffic flow must be allowed at the firewall to enable the communication?

- A. UDP port 16666
- B. IP protocol 97
- C. UDP port 97
- D. TCP port 97

Answer: A

NEW QUESTION 10

A wireless network consultant must assess an existing wireless LAN controller. Which section must the consultant check before replacing the old APs with APs that are IEEE 802.11ac-capable?

- A. number of AP licenses
- B. controller PSU
- C. throughput capacity
- D. software version

Answer: A

NEW QUESTION 10

Clustering Cisco WLCs into a single RF group enables the RRM algorithms to scale beyond the capabilities of a single Cisco WLC. How many WLC and APs in an RF group can the controller software scale up to in WLC release 8.9 depending on the platform?

- A. up to 20 WLCs and 1000 APs
- B. up to 20 WLCs and 3000 APs
- C. up to 20 WLCs and 4000 APs
- D. up to 20 WLCs and 6000 APs

Answer: D

NEW QUESTION 12

An engineer must create data link redundancy for the company's Cisco Wireless LAN controller. The engineer has decided to configure LAG-based redundancy instead of port-based redundancy. Which three features of LAG-based redundancy influenced this decision? (Choose three.)

- A. Packets are always sent out on the same port they are received on.
- B. All interface traffic passes as long as one port is up.
- C. The same port has multiple untagged dynamic interfaces.
- D. Interface connection to two separate nonstacked switches is available.
- E. Full bandwidth of all links is available.
- F. Ports are grouped into multiple LAGs.

Answer: ABF

NEW QUESTION 17

A customer is running a guest WLAN with a foreign/export-anchor setup. There is one anchor WLC in the US and two in Europe. Anchor WLC priorities are used to prefer local anchors. During a routine network audit, it is discovered that a large number of guest client sessions in the US are anchored to the WLCs in Europe. Which reason explains this behavior?

- A. The foreign WLC failed and recovered.
- B. The US anchor WLC failed and recovered.
- C. The US anchor WLC is anchored to itself with a priority value of zero.
- D. The anchor WLC is in the same mobility group.

Answer: B

NEW QUESTION 18

An engineer has successfully configured high availability and SSO using two Cisco 5508 Wireless LAN Controllers. The engineer can access the Active Primary WLC, but the Secondary Standby WLC is not accessible. Which two methods allow access to the standby unit? (Choose two.)

- A. via the console connection
- B. SSH to the redundancy management interface of the primary WLC
- C. SSH to the service port interface
- D. SSH to the virtual interface of the secondary WLC
- E. SSH to the management interface of the primary WLC

Answer: AC

NEW QUESTION 22

Which statement about AP failover priority for access points when configured with priority 1 or 4 is true?

- A. When configured with priority 1, the access point is assigned with the highest priority level and it is marked as critical.
- B. This access point fails over before other access points with the lower priority when there is primary controller failure.
- C. When configured with priority 4, the access point is assigned with the highest priority level and it is marked as critical.
- D. This access point fails over before other access points with the lower priority when there is primary controller failure.
- E. When configured with priority 4, the access point is assigned with the lowest priority level and it is marked as low.
- F. This access point fails over after other access points with the higher priority when there is primary controller failure.
- G. When configured with priority 1, the access point is assigned with the medium priority level and it is marked as medium.
- H. This access point fails over after other access points with the higher priority when there is primary controller failure.

Answer: B

NEW QUESTION 26

An engineer must ensure that the wireless network can accomplish fast secure roaming by way of caching keys on the access points. Which key caching mechanism is enabled by default on a Cisco AireOS WLC?

- A. SKC
- B. OKC
- C. 802.11r
- D. CCKM

Answer: D

NEW QUESTION 31

A customer has noticed that Client Band Select is enabled and no clients are utilizing the 5 GHz band. Which three parameters must be met to ensure that wireless clients use the 5 GHz band? (Choose three.)

- A. Ensure that channel bonding is enabled on the WLAN.
- B. Ensure that the co-channel interference has not exceeded -85 dBm.
- C. Ensure that the UNII-2 extended channels are enabled on the 802.11a radios.
- D. Ensure that the client is receiving RSSI above the minimum band select RSSI threshold.
- E. Ensure that the client is dual-band capable.
- F. Ensure that the WLAN has 802.11a enabled.

Answer: CDE

NEW QUESTION 35

A customer has determined that aesthetics is a primary concern for their upcoming guest deployment. Which design consideration can be leveraged to address this concern?

- A. Paint the access point to cover the LED from being noticeable.
- B. Use enclosures to hide the wireless infrastructure in the surrounding environment.
- C. Use AIR-AP-BRACKET-1 to allow for greater mounting locations.
- D. Deploy environmentally friendly cabling components to blend into the environment.

Answer: D

NEW QUESTION 38

A wireless deployment in a high-density environment is being used by vendors to process credit card payment transactions via handheld mobile scanners. The scanners are having problems roaming between access points in the environment. Which feature on the wireless controller should have been incorporated in the design?

- A. RX SOP
- B. 802.11w
- C. AP Heartbeat Timeout
- D. Application Visibility Control

Answer: A

NEW QUESTION 42

During a client roaming event, which device is responsible for communicating the new Layer 2 EID mapping of a wireless supplicant to the fabric domain?

- A. WLC
- B. BN
- C. CP2
- D. CP1

Answer: A

NEW QUESTION 46

Multiple WLCs are implemented in a high-availability configuration in a mobility group. APs are deployed with only a primary controller assigned. By default, which mobility group member controller do the orphaned APs join in the event of a failed controller?

- A. controller with the most available AP free license capacity
- B. controller with the lowest percent of associated APs per license capacity
- C. controller with the least CPU utilization over the last reporting period
- D. controller with the least number of associated APs

Answer: D

NEW QUESTION 51

A customer has two Cisco 550B WLCs that manage all the access points in their network and provide N+1 redundancy and load balancing. The primary Cisco WLC has 60 licenses and the secondary Cisco WLC has 40. The customer wants to convert the N+1 model to an HA model and provide SSO. Configuration must be performed during a maintenance window. After performing all the configurations on both controllers, the config redundancy unit secondary command is issued on the secondary Cisco WLC and it fails. Which parameter needs to be in place to complete the configuration?

- A. A cable in the RP port
- B. The secondary Cisco WLC needs a minimum of 50 base licenses
- C. The primary Cisco WLC is already set as the secondary unit.
- D. SSO needs to be enabled

Answer: B

NEW QUESTION 56

.....

THANKS FOR TRYING THE DEMO OF OUR PRODUCT

Visit Our Site to Purchase the Full Set of Actual 300-425 Exam Questions With Answers.

We Also Provide Practice Exam Software That Simulates Real Exam Environment And Has Many Self-Assessment Features. Order the 300-425 Product From:

<https://www.2passeasy.com/dumps/300-425/>

Money Back Guarantee

300-425 Practice Exam Features:

- * 300-425 Questions and Answers Updated Frequently
- * 300-425 Practice Questions Verified by Expert Senior Certified Staff
- * 300-425 Most Realistic Questions that Guarantee you a Pass on Your FirstTry
- * 300-425 Practice Test Questions in Multiple Choice Formats and Updatesfor 1 Year