



**Cisco**

## **Exam Questions 300-615**

Troubleshooting Cisco Data Center Infrastructure (DCIT)

#### NEW QUESTION 1

A mission-critical server is connected to site A. Connectivity to this server is lost from site B because the MAC route is missing in the OTV VDC of the Nexus 7000 in site B due to MAC aging. Which action allows the flooding of the unknown unicast MAC on the Nexus 7000 in the OTV VDC?

- A. Use route-map to advertise this MAC statically and redistribute with ISIS.
- B. Unknown unicast flooding is not allowed.
- C. Use the otv flood mac <> command to selectively flood traffic for a given MAC.
- D. Use the otv isis bfd <> command to configure BFD protocol.

Answer: B

#### NEW QUESTION 2

Refer to the exhibit. After a failover occurs, which two actions must be performed on Switch-B to manually preempt the operational primary role back to Switch-A? (Choose two.) A. Configure the local vPC role priority to have a lower value than Switch-A.

- A. Configure the local vPC role priority to have a higher value than Switch-A.
- B. Disable and then re-enable the vPC peer-keepalive link.
- C. Configure the local vPC role priority to have the same value as Switch-A.
- D. Disable and then re-enable the vPC peer link.

Answer: BE

#### NEW QUESTION 3

##### Debug messages from Router-A

```
OSPF: Rcv DBD from 10.100.1.2 on GigabitEthernet0/1 seq 0x2124 opt 0x52 flag 0x2
      len 1452 mtu 2000 state EXSTART
OSPF: Nbr 10.100.1.2 has larger interface MTU
SPF: Send DBD to 10.100.1.2 on GigabitEthernet0/1 seq 0x9E6 opt 0x52 flag 0x7
      len 32
OSPF: Retransmitting DBD to 10.100.1.2 on GigabitEthernet0/1 [10]
OSPF: Send DBD to 10.100.1.2 on GigabitEthernet0/1 seq 0x9E6 opt 0x52 flag 0x7
      len 32
OSPF Retransmitting DBD to 10.100.1.2 on GigabitEthernet0/1[11]
%OSPF-5-ADJCHG: Process 1, Nbr 10.100.1.2 on GigabitEthernet0/1 from EXSTART to
      DOWN, Neighbor Down: Too many retransmissions
```

##### Debug messages from Router-B

```
OSPF: Rev DBD from 10.100.100.1 on GigabitEthernet0/1 seq 0x89E opt 0x52 flag 0x7
      len 32 mtu 1600 state EXCHANGE
OSPF: Nbr 10.100.100.1 has smaller interface MTU
```

Refer to the exhibit. An OSPF adjacency between Router-A and Router-B cannot reach the FULL state. Which action resolves the issue?

- A. Adjust the MTU on Router-A to 1600.
- B. Disable the check of the MTU value.
- C. Set the OSPF media type to point-to-point.
- D. Adjust the MTU on Router-B to 1604.

Answer: B

#### NEW QUESTION 4

```

N9K-A
interface Vlan100
ip address 10.10.100.194/26
ip router eigrp 50
ip passive-interface eigrp 50
hsrp 100
authentication text pa$$word
preempt
priority 150
timers msec 500 msec 1000
ip 10.10.100.193
no shutdown

N9K-B
interface Vlan100
ip address 10.10.100.195/26
ip router eigrp 50
ip passive-interface eigrp 50
hsrp 100
authentication text pa$$word
preempt
priority 120
timers msec 300 msec 1500
ip 10.10.100.193
no shutdown

N9K-A# sh hsrp brief
*:IPv6 group  #:group belongs to a bundle
                P indicates configured to preempt.
Interface  Grp  Prio  P State  Active addr  Standby  addr  Group addr
Vlan100    100  150  P Active local          unknown  10.10.100.193  (conf)

N9K-B# sh hsrp brief
*:IPv6 group  #:group belongs to a bundle
                P indicates configured to preempt.
Interface  Grp  Prio  P State  Active addr  Standby  addr  Group addr
Vlan100    100  120  P Active local          unknown  10.10.100.193  (conf)

```

Refer to the exhibit. The HSRP instance on both switches is showing as active. Which action resolves the issue?

- A. Configure the HSRP timers to be the same.
- B. Allow VLAN 100 between the switches.
- C. Configure the IP address of N9K-B on the same subnet as N9K-A.
- D. Configure preempt on only one of the switches.

**Answer: B**

#### NEW QUESTION 5

An engineer is troubleshooting a fabric discovery failure. Which two requirements must an engineer verify about switch connectivity to solve the problem? (Choose two.)

- A. A Cisco APIC must be attached to a spine node only.
- B. A Cisco APIC must be attached to leaf nodes.
- C. Spine nodes must connect to other spine nodes.
- D. A Cisco APIC must be dual-attached to two separate spine nodes.
- E. Leaf nodes must connect to spine nodes only.

**Answer: BE**

#### NEW QUESTION 6

A customer configures HSRP between two data centers that are interconnected with OTV. The configuration succeeds, but traffic between two ESXi virtual hosts on the same site is routed suboptimally through the OTV overlay. Which two actions optimize the traffic? (Choose two.)

- A. Disable first-hop redundancy.
- B. Filter HSRP traffic by using a Layer 3 VACL on the OTV edge devices.
- C. Filter HSRP by using a Layer 2 MAC-list on the ESXi vSwitch.
- D. Filter HSRP traffic by using a Layer 3 VACL on the ESXi vSwitch.
- E. Filter HSRP by using a Layer 2 MAC-list on the OTV edge devices.

**Answer: AB**

#### NEW QUESTION 7

An engineer is troubleshooting a packet flow from an access leaf to spine. Which EVPN routes are expected on this connection?

- A. EVPN Type 1-5
- B. EVPN Type 0,9,15
- C. EVPN Type 9-15
- D. EVPN Type 0,16

**Answer: A**

#### NEW QUESTION 8



```
switch# show interface fc1/5
fc1/5 is down (NPV upstream port not available)
Hardware is Fibre Channel, SFP is short wave laser w/o OFC (SN)
Port WWN is 20:47:00:0d:ac:a4:3b:83
Admin port mode is F, turnk mode is off
snmp link state traps are enabled
Port vsan is 100
Receive data field Size is 2112
```

Refer to the exhibit. Interface fc1/5 is offline. Which action should be taken to troubleshoot the issue?

- A. Activate the correct zoneset for VSAN 100.
- B. Update the FLOGI database to contain the FLOGI entries for interface fc1/5 in VSAN 100.
- C. Update the FCNs database to contain names for VSAN 100.
- D. Configure the upstream ports and the server ports to be in VSAN 100.

**Answer: D**

#### NEW QUESTION 9

An engineer must replace a failed memory on a Cisco UCS B-Series Blade Server. After the replacement was done, the server has a “resolve slot” warning. Which server maintenance action resolves the issue?

- A. Perform diagnostic interrupt on the server.
- B. Re-acknowledgement the server.
- C. Reset the server.
- D. Decommission the server.

**Answer: B**

#### NEW QUESTION 10

```
leaf1# show interface ethernet 1/11
Ethernet1/11 is up (out-of-service)
admin state is up, Dedicated Interface
  Hardware: 1000/10000 Ethernet, address: e4aa/5d94.a2b5 (bia e4aa.5d94.a2b5)
  MTU 9000 bytes, BW 10000000 Kbit, DLY 1 usec
  reliability 255/255, txload 1/255, rxload 1/255
  Encapsulation ARPA, medium is broadcast
  Port mode is trunk
  full-duplex, 10 Gb/s, media type is 10G
  FEC (forward-error-correction) : disable-fec
  Beacon is turned off
  Auto-Negotiation is turned on
  Input flow-control is off, output flow-control is off
  Auto-mdix is turned off
  Rate mode is dedicated
  Switchport monitor is off
  EtherType is 0x8100
  EEE (efficient-ethernet) : n/a
  Last link flapped 4d06h
  Last clearing of "show interface" counters never
  1 interface resets
  30 seconds input rate 0 bits/sec, 0 packets/sec
  30 seconds output rate 0 bits/sec, 0 packets/sec
```

Refer to the exhibit. An engineer is performing a health check on ACI. Which statement about interface Ethernet 1/11 is true?

- A. The interface is working correctly and fully operational, but it is not in use.
- B. The interface policy is misconfigured.
- C. “out-of-service” is the default interface status in ACI.
- D. “out-of-service” indicates that no service graph is in use for this interface.

**Answer: B**

#### NEW QUESTION 10

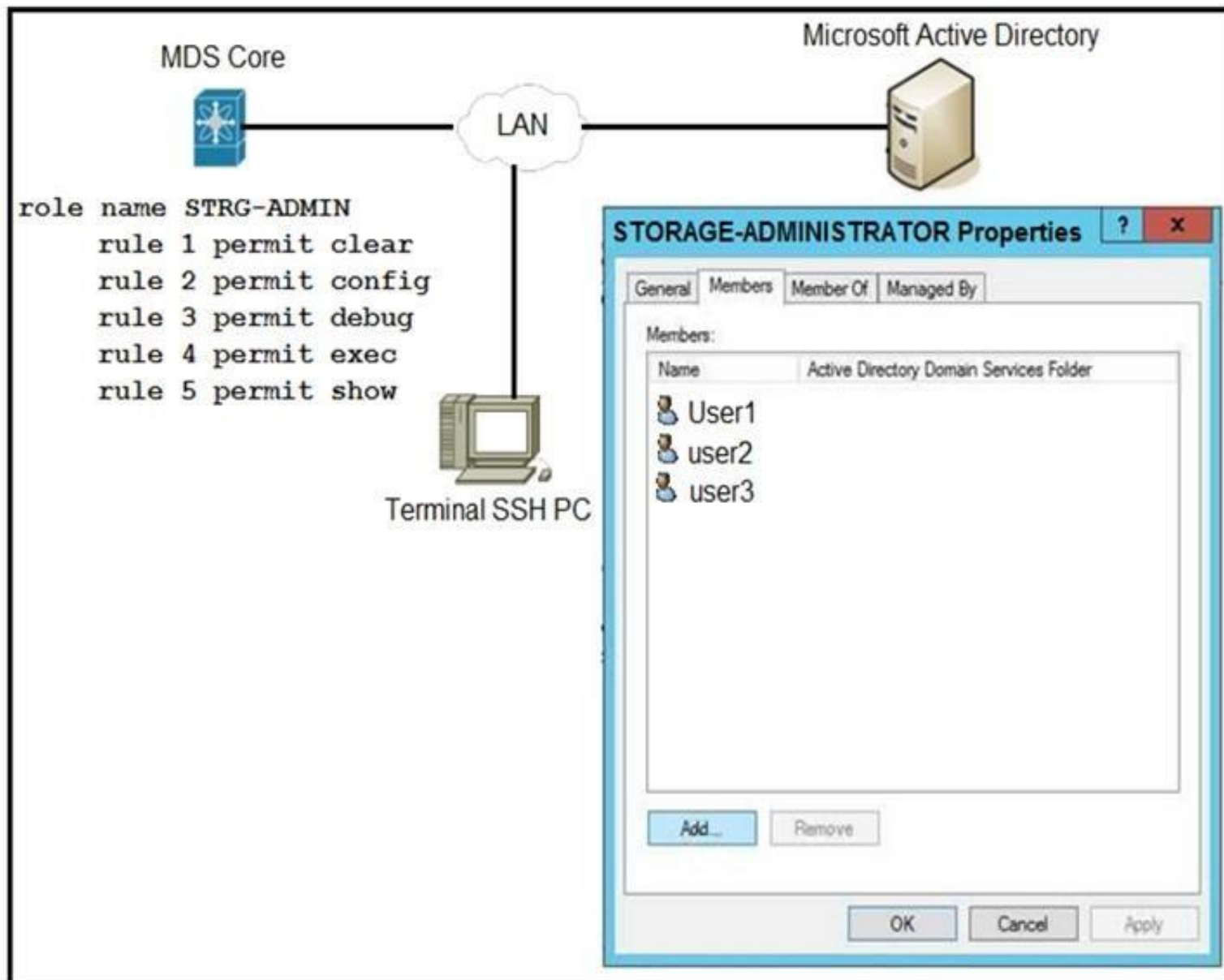
An engineer is implementing a storage VDC, but fails. Which two prerequisites must be in place before a storage VDC is implemented? (Choose two.)

- A. M-Series module
- B. ESSENTIALS license

- C. STORAGE-ENT license
- D. FCoE license
- E. F-Series module

Answer: DE

#### NEW QUESTION 14



Refer to the exhibit. An engineer is troubleshooting why user1, user2, and user3 from group STORAGE-ADMINISTRATOR in Microsoft Active Directory cannot log in to the Cisco MDS SSH CLI. Which action resolves the issue?

- A. Configure the role name to match the group name on Microsoft Active Directory.
- B. Include specific users into MDS role configuration.
- C. Configure SSH logins on Cisco MDS switch.
- D. Integrate Cisco MDS with Microsoft Active Directory.

Answer: A

#### NEW QUESTION 18

A server fails to boot from the operating system after a RAID1 cluster migration. The RAID remains in an inactive state during and after a service profile association. Which action resolves the issue?

- A. Configure the SAN boot target in the service profile.
- B. Configure the SAN boot target to any configuration mode.
- C. Use a predefined local disk configuration policy.
- D. Remove the local disk configuration policy.

Answer: C

#### NEW QUESTION 20

An engineer discovers that an NPV/NPIV uplink experiences a heavy load and plans to add more uplinks. Which statement about what occurs when the new uplinks are added is true?

- A. Only new connections use the new uplinks automatically.
- B. Paths must be defined before new connections can use the new uplinks.
- C. All connections must be reset before the new uplinks can be used.
- D. New and existing connections use the new uplinks automatically.

Answer: D

#### NEW QUESTION 24

```
FC0001# show zone active
zone name hba1_VN0001 vsan 3201
  fcid 0x970209 [pwwn 50:ab:0b:00:00:c2:8f:de]
* fcid 0x970102 [pwwn 20:ba:00:a0:98:3b:6f:d8]

zone name hba1_VN0002 vsan 3201
* fcid 0x970200 [pwwn 50:ab:0b:00:00:c2:8a:67]
  fcid 0x9700c2 [pwwn 20:ba:00:a0:98:3b:61:99]
```

Refer to the exhibit. The initiator that has FC ID 0x970102 fails to communicate with the target that has FC ID 0x970200. What action resolves the issue?

- A. Reconfigure the initiator and the target to be in the same zones.
- B. Reactivate the zoneset.
- C. Reset the port for FC ID 0x970102 and FC ID 0x970200 to log in to the fabric.
- D. Reset the port for FC ID 0x970209 and FC ID 0x9700c2 to log in to the fabric.

**Answer: B**

#### NEW QUESTION 26

A fabric interconnect fails to start and the console displays the loader prompt. Which two actions resolve the issue? (Choose two.)

- A. Load an uncorrupt bootloader image.
- B. Load an uncorrupt kickstart image.
- C. Reconnect L1/L2 cables between the Fis.
- D. Reformat the fabric interconnect.
- E. Load the correct version of the boot image.

**Answer: BE**

#### NEW QUESTION 29

DRAG DROP

Drag and drop the commands from the left onto the correct categories on the right.

Select and Place:

- A. Mastered
- B. Not Mastered

**Answer: A**

#### NEW QUESTION 31

A network administrator attempts to install an application in the Cisco NX-OS Guest shell and receives an error that there is not enough space on the disk. Which command must the administrator run to increase the disk space available in the Guest shell?

- A. guestshell growdisk rootfs [size-in-MB]
- B. guestshell pvextend rootfs [size-in-MB]
- C. guestshell resize rootfs [size-in-MB]
- D. guestshell resize2fs rootfs [size-in-MB]

**Answer: C**

#### NEW QUESTION 34

An engineer is troubleshooting a custom AV pair that was created by a client on an external authentication server to map a read-only role for a specific security domain. Which AV pair solves the problem?

- A. shell:domains=Security\_Domain\_1//Read\_Role\_1|Read\_Role\_2
- B. shell:domains=Security\_Domain\_1/Write\_Role\_1|Read\_Role\_2
- C. shell=Security\_Domain\_1/Read\_Role\_1|Read\_Role\_2
- D. shell:domains=Security\_Domain\_1/Read\_Role\_1|Read\_Role\_2

**Answer: A**

#### NEW QUESTION 37

.....

## Thank You for Trying Our Product

### We offer two products:

1st - We have Practice Tests Software with Actual Exam Questions

2nd - Questions and Answers in PDF Format

### 300-615 Practice Exam Features:

- \* 300-615 Questions and Answers Updated Frequently
- \* 300-615 Practice Questions Verified by Expert Senior Certified Staff
- \* 300-615 Most Realistic Questions that Guarantee you a Pass on Your First Try
- \* 300-615 Practice Test Questions in Multiple Choice Formats and Updates for 1 Year

**100% Actual & Verified — Instant Download, Please Click**  
**[Order The 300-615 Practice Test Here](#)**