

Microsoft

Exam Questions 70-532

Developing Microsoft Azure Solutions



NEW QUESTION 1

You are deploying the web-based solution in the West Europe region.

You need to copy the repository of existing works that the plagiarism detection service uses. You must achieve this goal by using the least amount of time. What should you do?

- A. Copy the files from the source file share to a local hard dis
- B. Ship the hard disk to the West Europe data center by using the Azure Import/Export service.
- C. Create an Azure virtual network to connect to the West Europe regio
- D. Then use Robocopy to copy the files from the current region to the West Europe region.
- E. Provide access to the blobs by using the Microsoft Azure Content Delivery(CDN). Modify the plagiarism detection service so that the files from the repository are loaded from the CDN.
- F. Use the Asynchronous Blob Copy API to copy the blobs from the source storage account to a storage account in the West Europe region.

Answer: D

Explanation: Ref: <http://blogs.msdn.com/b/windowsazurestorage/archive/2012/06/12/introducing-asynchronous-cross-account-copy-blob.aspx>

NEW QUESTION 2

DRAG DROP

You need insert code at line WR16 to implement the GetWork method.

How should you complete the relevant code? To answer, drag the appropriate code segment to the correct location. Each code segment may be used once, more than once, or not at all. You may need to drag the split bar between panes or scroll to view content.

Code Segments

numOfMessages:4

numOfMessages:8

GetMessages

PeekMessages

visibilityTimeout:

operationContext:

Answer Area

```
while (true)
{
    var messages = queue.
    (
        TimeSpan.FromHours(1));
    foreach (var message in messages)
        yield return message;
}
```

Answer:

Explanation: **Answer Area**

```
while (true)
{
    var messages = queue. GetMessages
    (
        numOfMessages:8 , visibilityTimeout:
    TimeSpan.FromHours(1));
    foreach (var message in messages)
        yield return message;
}
```

NEW QUESTION 3

HOTSPOT

You need to configure scaling for the plagiarism detection

What should you do? To answer, select the appropriate values in the dialog box in the answer area.

Answer Area

SCALE BY METRIC

NONE CPU **QUEUE**

INSTANCE RANGE
A1 (1 CORE, 1.75 GB MEMORY)

1

1
3
5
10

QUEUE NAME

checkwork
input
ready
submitted

TARGET PER MACHINE

100
300
500
1000

Answer:

Explanation: **Answer Area**

SCALE BY METRIC

NONE CPU **QUEUE**

INSTANCE RANGE
A1 (1 CORE, 1.75 GB MEMORY)

1

1
3
5
10

QUEUE NAME

checkwork
input
ready
submitted

TARGET PER MACHINE

100
300
500
1000

NEW QUESTION 4

HOTSPOT

You run the following PowerShell script. Line numbers are included for reference only.

```
01 Get-AzureSubscription -SubscriptionName ContosoPt1
02 Switch-AzureWebsiteSlot -Name ContosoPt1_2
03 Remove-AzureWebsite -Name ContosoPt1_2 -Slot staging
04 Get-AzureDeployment -ServiceName ContosoPt1_2 -Slot Production | Get-AzureDNS
05 $MyAzureCert = Get-AzureCertificate -ServiceName ContosoPT | Remove-AzureCertificate
```

For each of the following statements, select Yes if the statement is true. Otherwise, select No.

Answer Area

	Yes	No
After you run this script, a new certificate will be applied to the web site.	<input type="radio"/>	<input type="radio"/>
After you run this script, you must update the custom domain names.	<input type="radio"/>	<input type="radio"/>
After you run this script, you must recreate the staging slot.	<input type="radio"/>	<input type="radio"/>

Answer:

Explanation: Answer Area

	Yes	No
After you run this script, a new certificate will be applied to the web site.	<input type="radio"/>	<input checked="" type="radio"/>
After you run this script, you must update the custom domain names.	<input type="radio"/>	<input checked="" type="radio"/>
After you run this script, you must recreate the staging slot.	<input checked="" type="radio"/>	<input type="radio"/>

NEW QUESTION 5

You need to implement data storage for patient information.
What should you do?

- A. Use the Update Entity operation of the Table Service REST API.
- B. Use the Put Blob operation of the Blob Service REST API.
- C. Use the Put Message operation of the Create Queue REST API.
- D. Use the Set Share operation of the File Service REST API.

Answer: A

NEW QUESTION 6

You create a VM named cVM_005 for a newly hired contractor.
The contractor reports that the VM runs out of memory when the contractor attempts to test the mobile applications.
You need to double the memory that is available for the VM. Which Windows PowerShell command should you use?

- ☒ A. `SetAzureVMSize -ServiceName "cVM_005" -VMSize "A4"`
- ☐ B. `Add-DataDisksToVM.ps1 -ServiceName "cVM_005" -VMName "MyVM" -Location "West US" -NumberOfDisks 2 -DiskSizeInGB 16`
- ☐ C. `SetAzureVMSize -ServiceName "cVM_005" -VMSize "Medium"`
- ☐ D. `SetAzureVMSize -ServiceName "cVM_005" -VMSize "A6"`

- A. Option A
- B. Option B
- C. Option C
- D. Option D

Answer: A

NEW QUESTION 7

You need to implement error logging.
Which code segment should you insert at line CF13?


```
A. System.Diagnostics.Trace.WriteIf(false, "A user is on page at " +  
DateTime.UtcNow.ToShortDateString(), "Error");  
  
B. System.Diagnostics.Trace.WriteLineIf(false, "A user is on page at "  
+ DateTime.UtcNow.ToShortDateString(), "Verbose");  
  
C. System.Diagnostics.Trace.Assert(false, "A user is on page at " +  
DateTime.UtcNow.ToShortDateString());  
  
D. System.Diagnostics.Trace.TraceError("A user is on page at " +  
DateTime.UtcNow.ToShortDateString());
```

- A. Option A
- B. Option B
- C. Option C
- D. Option D

Answer: D

NEW QUESTION 8

You need to implement data storage for patient information. What should you do?

- A. Use the Set Blob Properties operation of the Blob Service REST API.
- B. Use the Insert Entity operation of the Table Service REST API.
- C. Use the Set Queue Metadata operation of the Create Queue REST API.
- D. Use the Query Entities operation of the Table Service REST API.

Answer: A

NEW QUESTION 9

There is a lengthy delay between the time an alert is sent and when it is received by the Web App. You need to resolve the issue. What should you do?

- A. Increase the amount of swap memory for the VM instance.
- B. Enable automatic scaling for the Web App.
- C. Decrease the instance count for the worker role.
- D. Enable automatic scaling for the worker role.
- E. Set monitoring level to Verbose for the worker role.

Answer: C

Explanation: From scenario: The data collection service runs Node.js in a worker role.

All deployed instances must scale up to the next available CPU instance at a CPU usage threshold of 90 percent and scale down when the usage is below 10 percent.

Case Study: 3 Mortgage Loan

Background

A company is developing a website that supports mortgage loan processing. You use the Azure management portal to create a website. You initially configure the website to use the Basic hosting plan. You register a custom domain for the website with a valid registrar. Customers complete mortgage applications and upload supporting documents to the website. A custom executable named FileProcessor.exe processes all of the information received. An on-premises server that runs Windows Server hosts the executable.

You create a virtual hard disk (VHD) image of the on-premises server. You plan to use this VHD to replace the on-premises server with a new virtual machine (VM) that is hosted in Azure.

Business Requirements

Business stakeholders have identified the following requirements for the mortgage loan processing website:

- ? The website must provide a secure mortgage application process for the customer.
- ? Business users must validate new versions of the website before you publish them to the production site. You must be able to revert to the previous version easily when issues arise.
- ? The website must remain available to users while new features and bug fixes are deployed.
- ? Network traffic must be monitored on all ports that the website uses.

General:

- ? You must develop the website by using Microsoft Visual Studio 2013.
- ? The website must be stateless. Subsequent requests from a user might or might not be routed back to the website instance that the user initially connected to.

Security:

You must secure the custom domain and all subdomains by using SSL.

Storage:

- ? The custom executable must use native file system APIs to share data between different parts of the website.
- ? The custom executable must continue to use a network file share to access files.

Monitoring:

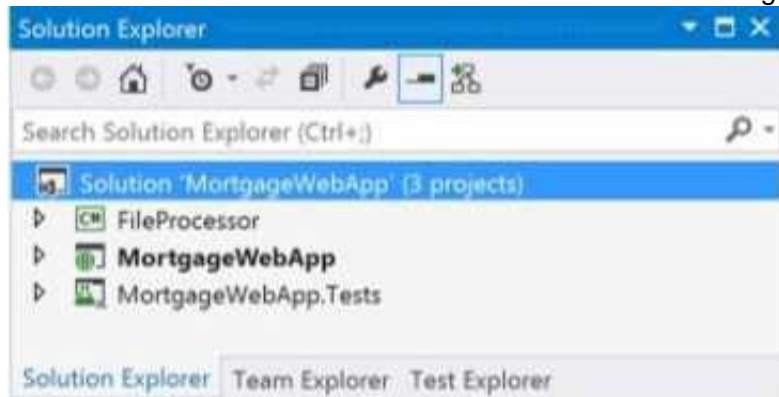
The website must use port 6000 with UDP to submit information to another process. This

port must be actively monitored by using the same external port number.

Deployment:

- ? You must the VM and the associated VHD. You will need to move this VM to a different Azure subscription after deployment.
- ? You must establish a continuous deployment process that uses staged publishing.
- ? The custom domain must handle requests for multiple subdomains.
- ? The custom domain must use a www CNAME record that points to the domain's @ A record.
- ? The custom executable must run continuously and must be deployed as an Azure web job named FileProcessor

? Application Request Routing (ARR) affinity must be disabled for the website. Solution Structure
 The solution structure for the website is shown in the following exhibit.



NEW QUESTION 10

You need to move the VM. What should you do?

- A. Use the Blob Service REST API
- B. Use the Service Management REST API
- C. Run the Azure Convert-VHD cmdlet.
- D. Run the Azure PowerShell New-AzureVMcmdlet

Answer: A

NEW QUESTION 10

You need to configure session affinity for the website.

Which two actions will achieve the goal? Each correct answer presents a complete solution.

- ☐ A. In the Azure management portal, create a new traffic manager. Configure the traffic manager to use round-robin load balancing and the HTTP monitoring protocol. Add a new service endpoint to the traffic manager. Configure the endpoint to use the **Web Site** service type. Configure the website to use the endpoint.

- ☐ B. Add the following code to the Global.asax.cs file:

```
protected void Application_PreSendRequestHeaders()
{
    Response.Headers.Add("Arr-Disable-Session-Affinity", "True");
}
```

- ☐ C. Add the following code to the Global.asax.cs file:

```
protected void Application_Start()
{
    ...
    var affinityCookie = new HttpCookie("Arr-Disable-Session-Affinity")
    {
        Value = "True",
        HttpOnly = true
    };
    Response.Cookies.Add(affinityCookie);
}
```

- ☐ D. Add the following markup to the web.config file:

```
<system.webServer>
  <httpProtocol>
    <customHeaders>
      <add name="Arr-Disable-Session-Affinity" value="true" />
    </customHeaders>
  </httpProtocol>
</system.webServer>
```

- A. Option A
- B. Option B
- C. Option C
- D. Option D

Answer: BD

NEW QUESTION 13

DRAG DROP

You need to complete the domain configuration for the website.

Which four actions should you perform in sequence? To answer, move the appropriate actions from the list of actions to the answer area and arrange them in the correct order.

Actions	Answer Area
Create a CNAME resource record that points from the custom domain to: <websiteName>.azurewebsites.net.	
In the Azure management portal, create a new virtual network.	
Point the DNS root domain record IP address to the website.	
In the Azure management portal, configure the website to use the custom domain.	
On the Azure dashboard page for websites, obtain the IP address.	

Answer:

Explanation:

Ref: <http://azure.microsoft.com/en-gb/documentation/articles/web-sites-custom-domain-name/>

NEW QUESTION 18

DRAG DROP

You need to secure the website.

Which three actions should you perform in sequence? To answer, move the appropriate actions from list of actions to the answer area and arrange them in the correct order.

Actions	Answer Area
Configure the website to use the Standard hosting plan.	
Add the SSL settings to the web.config file of the website.	
Configure the website to use the Shared hosting plan.	
Select the name of the domain that the SSL certificate secures.	
Upload a wildcard SSL certificate.	
Upload a basic SSL certificate.	

Answer:

Explanation:

Ref: <http://azure.microsoft.com/en-us/documentation/articles/web-sites-configure-ssl-certificate/>

NEW QUESTION 22

HOTSPOT

You need to deploy the FileProcessor.exe program.

How should you update the project configuration file for the program? To answer, select the appropriate option or options in the answer area.

Answer Area

```
<Target Name=" " >
  <Copy
    AfterBuild
    BeforeBuild
    BeforeCompile
    AfterCompile

    DestinationFolder="
      ..\MortgageWebApp\App_Data\jobs\continuous\FileProcessor
      ..\MortgageWebApp\App_Data\jobs\continuous\FileProcessorWebJob
      ..\MortgageWebApp\App_Data\jobs\triggered\FileProcessor
      ..\MortgageWebApp\App_Data\jobs\triggered\FileProcessorWebJob

    SourceFiles="$(OutputPath)\FileProcessor.exe"

  />
</Target>
```

Answer:

Explanation: **Answer Area**

```
<Target Name=" " >
  <Copy
    AfterBuild
    BeforeBuild
    BeforeCompile
    AfterCompile

    DestinationFolder="
      ..\MortgageWebApp\App_Data\jobs\continuous\FileProcessor
      ..\MortgageWebApp\App_Data\jobs\continuous\FileProcessorWebJob
      ..\MortgageWebApp\App_Data\jobs\triggered\FileProcessor
      ..\MortgageWebApp\App_Data\jobs\triggered\FileProcessorWebJob

    SourceFiles="$(OutputPath)\FileProcessor.exe"

  />
</Target>
```

NEW QUESTION 25

You need to configure role instances. Which size should you specify for the VM?

- A. Use Small for Off-Peak mode.
- B. Use Large for On-Peak mode.
- C. Use Extra Large for On-Peak mode.
- D. Use Extra Small for Off-Peak mode.

Answer: B

NEW QUESTION 29

DRAG DROP

You need to insert markup at line SD22 to install the software that generates PDF documents.

How should you complete the relevant markup? To answer, drag the appropriate code segments to the correct locations. Each code segment may be used once, more than once, not at all. You may need to drag the split bar between panes or scroll to view content.

Code Segments

Startup

Runtime

msiexec.exe /i pdfwriter.msi /qb

InstallPrereqs.cmd

elevated

limited

simple

background

Answer Area

<

>

<Task

commandLine="

"

taskType="

"

executionContext="

"

/>

</

>

Answer:

Explanation: Answer Area

< Startup >

<Task

commandLine=" InstallPrereqs.cmd "

taskType=" simple "

executionContext=" elevated "

/>

</ Startup >

NEW QUESTION 33

HOTSPOT

You need to insert code at line SB11 to apply the storage access policy.
How should you complete the relevant code segment? To answer, select the appropriate option or options in the answer area.

Answer Area

```
private SharedAccessBlobPolicy GetSharedAccessBlobPolicy()
{
    SharedAccessBlobPolicy policy = new SharedAccessBlobPolicy()
    {
        SharedAccessStartTime =  ,

        SharedAccessExpiryTime =  ,

        Permissions = SharedAccessBlobPermissions.List | 

    };
    return policy;
}
private void ApplySharedAccessPolicy(CloudBlobContainer blobContainer)
{
    SharedAccessBlobPolicy sharedAccessPolicy = this.GetSharedAccessBlobPolicy();
    BlobContainerPermissions permissions = new BlobContainerPermissions();
    permissions.SharedAccessPolicies.Add("DocumentBlob", sharedAccessPolicy);

    permissions.PublicAccess =  ;
}
```

Answer:

Explanation:

Answer Area

```
private SharedAccessBlobPolicy GetSharedAccessBlobPolicy()
{
    SharedAccessBlobPolicy policy = new SharedAccessBlobPolicy()
    {
        SharedAccessStartTime =  ,

        SharedAccessExpiryTime =  ,

        Permissions = SharedAccessBlobPermissions.List | 

    };
    return policy;
}
private void ApplySharedAccessPolicy(CloudBlobContainer blobContainer)
{
    SharedAccessBlobPolicy sharedAccessPolicy = this.GetSharedAccessBlobPolicy();
    BlobContainerPermissions permissions = new BlobContainerPermissions();
    permissions.SharedAccessPolicies.Add("DocumentBlob", sharedAccessPolicy);

    permissions.PublicAccess =  ;
}
```

NEW QUESTION 36

DRAG DROP

You need to insert code at line SB17 to create the hyperlink that customers use to upload additional necessary documents. How should you complete the relevant code? To answer, drag the appropriate code segments to the correct locations. Each code segment may be used once, more than once, or not at all. You may need to drag the split bar between panes or scroll to view content.

Code Segments

GetSharedAccessSignature

CreateCloudBlobClient

CreateIfNotExists

blobContainer.Uri, token

Token, blobContainer.Uri

GetSharedAccessBlobPolicy

Answer Area

```
private string GetSASContainerURI(CloudBlobContainer blobContainer)
{
    string token = blobContainer.  (null, "DocumentBlob");
    return String.Format("{0}{1}",  );
}
private CloudBlobContainer GetBlobContainer()
{
    CloudStorageAccount storageAccount =
        CloudStorageAccount.Parse (CloudConfigurationManager.GetSetting("StorageConnectionString"));

    CloudBlobClient blobClient = storageAccount.  ();

    CloudBlobContainer blobContainer
        = blobClient.GetContainerReference("blobContainerSAS");

    blobContainer.  ();
}
```

Answer:

Explanation:

worker role instances named FabrikamFundingPayment Processor.

Application Structure

Relevant portions of the app files are shown below. Line numbers are included for reference only and include a two-character prefix that denotes the specific file to which they belong.

CustomRetryPolicy.cs

```
CR01 public class CustomRetryPolicy : IRetryPolicy
CR02 {
CR03     int _retryCount = 0;
CR04     readonly TimeSpan _baseInterval= TimeSpan.FromSeconds(1);
CR05     readonly string _poisonPaymentQueueName;
CR06     private readonly CloudQueueClient _queueClient;
CR07     private readonly EventPayment _eventPayment;
CR08     public CustomRetryPolicy(string poisonPaymentQueueName, CloudQueueClient
queueClient, EventPayment eventPayment)
CR09     {
CR10         _poisonPaymentQueueName = poisonPaymentQueueName;
CR11         _queueClient = queueClient;
CR12         _eventPayment = eventPayment;
CR13     }
CR14     public IRetryPolicy CreateInstance()
CR15     {
CR16         return new CustomRetryPolicy(_poisonPaymentQueueName, _queueClient,
_eventPayment);
CR17     }
CR18 }
```

Event.cs

```
EV01 public class Event : TableEntity
EV02 {
EV03     public int AvailableTickets { get; set; }
EV04 }
```

EventPayment.cs

```
EP01 [DataContract]
EP02 public class EventPayment
EP03 {
EP04     [DataMember]
EP05     public int EventId { get; set; }
EP06     [DataMember]
EP07     public string Email { get; set; }
EP08     [DataMember]
EP09     public string Notes { get; set; }
EP10     [DataMember]
EP11     public int TicketCount { get; set; }
EP12     [DataMember]
EP13     public DateTime OrderDate { get; set; }
EP14     [DataMember]
EP15     public Guid EventPaymentId { get; set; }
EP16 }
```


QueueManager.cs

```

QM01 public class QueueManager
QM02 {
QM03     private readonly CloudQueueClient _queueClient;
QM04     private readonly CloudTableClient _tableClient;
QM05     private const string PaymentQueueName = "paymentqueue";
QM06     private const string PoisonPaymentQueueName = "poisonpaymentqueue";
QM07     public QueueManager()
QM08     {
QM09         var storageAccount = CloudStorageAccount.Parse(
QM10             CloudConfigurationManager.GetSetting("StorageConnectionString"));
QM11         _queueClient = storageAccount.CreateCloudQueueClient();
QM12         _tableClient = storageAccount.CreateCloudTableClient();
QM13     }
QM14     public async Task SendMessageAsync(EventPayment eventPayment)
QM15     {
QM16         ...
QM17     }
QM18     public async Task ProcessMessagesAsync()
QM19     {
QM20         ...
QM21     }
QM22     public async Task ProcessPayment(EventPayment eventPayment)
QM23     {
QM24         var events = _tableClient.GetTableReference("events");
QM25         var key = eventPayment.EventId.ToString();
QM26         var operation = await events.ExecuteAsync(TableOperation.Retrieve<Event>(key, key));
QM27         var @event = operation.Result as Event;
QM28         @event.AvailableTickets = @event.AvailableTickets - eventPayment.TicketCount;
QM29         var requestOptions = new TableRequestOptions
QM30         {
QM31             RetryPolicy = new CustomRetryPolicy(
QM32                 PoisonPaymentQueueName,
QM33                 _queueClient,
QM34                 eventPayment),
QM35         };
QM36         var context = new OperationContext
QM37         {
QM38             StartTime = DateTime.Now,
QM39         };
QM40         await events.ExecuteAsync(TableOperation.Replace(@event),
requestOptions, context);
QM41     }
QM42 }

```

NEW QUESTION 43

HOTSPOT

You need to implement the SendMessageAsync method in the QueueManager class.

How should you complete the relevant code? To answer, select the appropriate code segment from each list in the answer area.

Answer Area

```
public async Task SendMessageAsync(EventPayment eventPayment)
{
    var queue = _queueClient.GetQueueReference(PaymentQueueName);
    await queue.CreateIfNotExistsAsync();

    await queue.ClearAsync();
    queue.EncodeMessage = true;
    var eventPaymentMessage = new XmlSerializer(typeof(EventPayment)).Serialize(eventPayment);
    var eventPaymentMessage = JsonConvert.SerializeObject(eventPayment);

    await queue.PeekMessageAsync();
    queue.Metadata.Add("message", eventPaymentMessage);
    var message = new CloudQueueMessage(eventPaymentMessage);
    var message = CloudConfigurationManager.GetSetting("eventPaymentMessage");

    queue.AddMessage(message);
    queue.DeleteMessage(message);
    await queue.AddMessageAsync(message);
    await queue.DeleteMessageAsync(message);
}
```

Answer:

Explanation:

Answer Area

```
public async Task SendMessageAsync(EventPayment eventPayment)
{
    var queue = _queueClient.GetQueueReference(PaymentQueueName);
    await queue.CreateIfNotExistsAsync();

    await queue.ClearAsync();
    queue.EncodeMessage = true;
    var eventPaymentMessage = new XmlSerializer(typeof(EventPayment)).Serialize(eventPayment);
    var eventPaymentMessage = JsonConvert.SerializeObject(eventPayment);

    await queue.PeekMessageAsync();
    queue.Metadata.Add("message", eventPaymentMessage);
    var message = new CloudQueueMessage(eventPaymentMessage);
    var message = CloudConfigurationManager.GetSetting("eventPaymentMessage");

    queue.AddMessage(message);
    queue.DeleteMessage(message);
    await queue.AddMessageAsync(message);
    await queue.DeleteMessageAsync(message);
}
```

NEW QUESTION 45

You need to diagnose the of the performance issues when preparing concert tickets.

Which two actions should you perform? Each correct answer presents a complete solution. NOTE: Each correct selection is worth one point.

- A. Examine the Storage Logging logs for any queue operations that have higher than expected latency.
- B. Examine the Storage Client Library logs to determine whether there is a decrease in the total number of requests for storage operations.
- C. Examine the diagnostic message logs for the worker role to determine whether the worker role is failing to process messages.
- D. Examine the Storage Client Library logs to determine whether there are repeated retries for storage operations.

Answer: AD

Explanation: References: <https://docs.microsoft.com/en-us/azure/storage/storage-monitoring-diagnosing-troubleshooting#you-are-experiencing-unexpected-delays-in-message->

NEW QUESTION 47

Note: This question is part of a series of questions that present the same scenario. Each question in the series contains a unique solution that might meet the stated goals. Some question sets might have more than one correct solution, while others might not have a correct solution.

After you answer a question in this section, you will NOT be able to return to it. As a result, these questions will not appear in the review screen.

You need to ensure that moderators can be added to the system. Which authentication approach should you use?

- A. Microsoft Office 365 directory
- B. Azure AD self-service signup
- C. Azure AD Organizational Units (OU)
- D. Active Directory Federation

Answer: C

NEW QUESTION 48

Note: This question is part of a series of questions that present the same scenario. Each question in the series contains a unique solution that might meet the stated goals. Some question sets might have more than one correct solution, while others might not have a correct solution.

After you answer a question in this section, you will NOT be able to return to it. As a result, these questions will not appear in the review screen.

You need to implement the infrastructure for the Interaction Agents.

Solution: Create a set of Azure virtual machines (VMs) using Azure Resource Manager (ARM) templates, and use Chef to install the Service Fabric runtime.

Does the solution meet the goal?

- A. Yes
- B. No

Answer: B

NEW QUESTION 52

You need to write an Azure Search Query to return data for the first subsection of the Daily Sponsor Report.

Which query string should you use?

- A. facets=currentOwner&sort=dateLastClaimed
- B. \$filter=sponsor&sort=dateLastClaimed
- C. search=currentOwner&sort=dateLastClaimed
- D. group=sponsor&sort=dateLastClaimed
- E. facets=sponsor&sort=dateLastClaimed

Answer: C

NEW QUESTION 54

DRAG DROP

You need to ensure that sponsors can interact the GamerData service by using the same credentials as they use for other LitWare, Inc. services.

Which three actions should you perform in sequence? To answer, move the appropriate actions from the list of actions to the answer area and arrange them in the correct order.

Actions

- Create a new Azure AD named litware.onmicrosoft.com.
- Enable OAuth 2.0 user authorization in Azure AD.
- Configure an API Management OAuth 2.0 authorization server.
- Configure an Azure AD OAuth 2.0 authorization server.
- Enable OAuth 2.0 user authorization in API Management.
- Register the API Management developer portal as an Azure AD application in litware.onmicrosoft.com.
- Register the API Management developer portal as an Azure AD application in litware2.onmicrosoft.com.
- Register the API Management developer portal as an Azure AD application in litwaregamedata.onmicrosoft.com.

Answer Area



Answer:

Explanation:

Actions

- Create a new Azure AD named litware.onmicrosoft.com.
- Enable OAuth 2.0 user authorization in Azure AD.
- Configure an API Management OAuth 2.0 authorization server.
- Configure an Azure AD OAuth 2.0 authorization server.
- Enable OAuth 2.0 user authorization in API Management.
- Register the API Management developer portal as an Azure AD application in litware.onmicrosoft.com.
- Register the API Management developer portal as an Azure AD application in litware2.onmicrosoft.com.
- Register the API Management developer portal as an Azure AD application in litwaregamedata.onmicrosoft.com.

Answer Area

- Enable OAuth 2.0 user authorization in Azure AD.
- Register the API Management developer portal as an Azure AD application in litwaregamedata.onmicrosoft.com.
- Configure an Azure AD OAuth 2.0 authorization server.



HOTSPOT

You need to write a method to return the email address for a given sponsor.

What should you do? To answer, drag the appropriate code segment to the correct location. Each code segment may be used once, more than once, or not at all.

You may need to drag the split bar between panes or scroll to view content.

Code segments

`https://graph.windows.net/litwaregamerdata`

`https://litwaregamerdata.onmicrosoft.com/graph`

`https://graph.windows.net/litwareinc`

`https://litwareinc.onmicrosoft.com/graph`

`/users?api-version=1.6&$filter=displayName eq \' {pg.Sponsor} \'`

`/users?api-version=1.6&$filter=displayName eq \' {pg.CurrentOwner} \'`

`result.value[0].mail`

`result.value[0].sipProxyAddress`

• • • • •

Answer Area

```
private async Task<string> getEmail(PointGenerator pg, string accessToken)
{
    var url = "";
    url += $" ";

    var http = new HttpClient ();
    var request = new HttpRequestMessage(HttpMethod .Get, url);
    request.Headers.Authorization =
        new AuthenticationHeaderValue("Bearer", accessToken);
    var response = await http.SendAsync(request);
    dynamic result =
        JsonConvert.DeserializeObject(await response.Content.ReadAsStringAsync());

    return ;
}
```

Answer:

Explanation:

Code segments

https://graph.windows.net/litwaregamerdata

https://litwaregamerdata.onmicrosoft.com/graph

https://graph.windows.net/litwareinc

https://litwareinc.onmicrosoft.com/graph

/users?api-version=1.6&\$filter=displayName eq \' {pg.Sponsor}\'

/users?api-version=1.6&\$filter=displayName eq \' {pg.CurrentOwner}\'

result.value[0].mail

result.value[0].sipProxyAddress

•••••

Answer Area

```
private async Task<string> getEmail(PointGenerator pg, string accessToken)
{
    var url = "https://graph.windows.net/litwaregamerdata";
    url += $" /users?api-version=1.6&$filter=displayName eq \' {pg.Sponsor}\'";

    var http = new HttpClient ();
    var request = new HttpRequestMessage(HttpMethod .Get, url);
    request.Headers.Authorization =
        new AuthenticationHeaderValue("Bearer", accessToken);
    var response = await http.SendAsync(request);
    dynamic result =
        JsonConvert.DeserializeObject(await response.Content.ReadAsStringAsync());

    return result.value[0].mail;
}
```

NEW QUESTION 62

HOTSPOT
 You need to create the Azure Search index.
 How should you configure the Azure Search index? To answer, select the appropriate options in the answer area.
 NOTE: Each correct selection is worth one point.

FIELD NAME	TYPE	RETRIEVABLE	FILTERABLE	SORTABLE
currentOwner	Edm.String	<input checked="" type="checkbox"/>	<input type="checkbox"/>	<input checked="" type="checkbox"/>
sponsor	Edm.String	<input checked="" type="checkbox"/>	<input type="checkbox"/>	<input checked="" type="checkbox"/>
dateLastClaimed	Edm.DateTimeOffset	<input checked="" type="checkbox"/>	<input type="checkbox"/>	<input checked="" type="checkbox"/>

Answer:
Explanation:

FIELD NAME	TYPE	RETRIEVABLE	FILTERABLE	SORTABLE
currentOwner	Edm.String	<input checked="" type="checkbox"/>	<input type="checkbox"/>	<input checked="" type="checkbox"/>
sponsor	Edm.String	<input checked="" type="checkbox"/>	<input type="checkbox"/>	<input checked="" type="checkbox"/>
dateLastClaimed	Edm.DateTimeOffset	<input checked="" type="checkbox"/>	<input type="checkbox"/>	<input checked="" type="checkbox"/>

Case Study: 8

Fourth Coffee

Background

You are a developer working for Fourth Coffee, a company that sells coffee and coffee accessories through an Azure-based website and retail locations. Features of the website include the ability to write product reviews, comment on reviews and find whether a particular product is available a specific retail location.

Fourth Coffee licenses a product from Contoso, Ltd, that provides an Azure-based website for users in Japan. The website includes reviews and comments. All comments and product reviews are shared between Fourth Coffee's website and the Japanese website.

Business Requirements

Product Reviews

User-submitted product reviews are provided by Contoso and are stored in the Japanese language in an HTML file format. When a review is submitted, you must remove specific keywords from the review and translate the review to the English language before you load the review onto the Fourth Coffee website. Translation processing and migration must occur with a minimum delay.

Product reviews can be loaded by third party websites, but only after they are processed and reviewed by Fourth Coffee employees. Reviews can be loaded up to one year after they are made public on the Fourth Coffee website.

Comments

Users can post comments about product reviews. After a comment is posted, all other users who comment on that product receive a notification on their Android or Windows Phone device.

Requirements

Product Reviews

The product reviews from Contoso are stored as HTML files in BLOB storage with the format "/reviews/<guid>.html".

Fourth Coffee stores reviews in BLOB storage, with the format "/users/reviews/<guid>.md" where <guid> matches the file name of the review. After a Fourth Coffee employee approves the review, a metadata property named Reviewed with the value true is set on the BLOB. Some product reviews contain language-specific terms that require additional processing. The additional processing is done by a python script named cleanup.py. The script relies on a data file names term.data that contains terms and their replacement values. All running instances of the script must use the same instance of the data file.

Security

To simplify the security configuration, Contoso and Fourth Coffee agree to configure the website and services to allow for communication between the services without the traffic being visible on the public Internet.

To prevent third parties from harvesting review data, whenever the system returns public reviews, it records the IP address of the request and increments a count of the times that data is retrieved from a particular IP address. If an IP address makes more than 10 requests a minute, the client must be redirected to a static page named ratelimit.html.

Azure

The Fourth Coffee website and related services that run on Azure are located in the US West region and are on a single virtual network named Main with the address 10.1.0.0/16.

The Contoso website and related services that run on Azure are located in the Japan West region and are on a single virtual network named CT with the address 10.2.0.0/24.

Product review comments must be processed, at most, one time. When a comment is posted, it must be associated with the identity of the user who posted the comment. Product review comments are indexed by a web service that accepts the body of the comment in an HTTP POST. When comments are ported, they must be indexed for search within 15 minutes. Each comment must be indexed exactly once. All mobile device notifications are sent by using the Azure Notification Hub service.

Application Structure

CommentIndexer.cs

Relevant portions of the CommentIndexer.cs file are shown below. Line numbers are included for reference only and include a two-character prefix that denotes the specific file to which the code belongs.

```
CI01 public class CommentIndexer
CI02 {
CI03     public static void ProcessQueueMessage (
CI04         [ServiceBusTrigger("comments")] BrokeredMessage message)
CI05     {
CI06         var searchRequest = WebRequest.Create("http://10.1.1.24/search");
CI07         searchRequest.Method = "POST";
CI08
CI09         var comment = message.GetBody<string>();
CI10         using (var req = searchRequest.GetRequestStream())
CI11         {
CI12             using (var tw = new StreamWriter(req))
CI13                 tw.Write(message.SessionId + comment)
CI14         }
CI15
CI16         foreach (var user in usersForCommentNotifications(comment))
CI17         {
CI18             sendNotification(user, comment);
CI19         }
CI20     }
CI21
CI22     private static void sendNotification(User user, string comment)
CI23     {
CI24         ...
CI25     }
CI26
CI27     private static string buildCommentJson(string comment)
CI28     {
CI29         ...
CI30     }
CI31
CI32     private static User[] usersForCommentNotifications(string comment)
CI33     {
CI34         ...
CI35     }
CI36 }
```

ReviewController.cs

Relevant portions of the ReviewController.cs file are shown below. Line numbers are included for reference only and include a two-character prefix that denotes specific file to which the code belongs.

```
RC01 public class ReviewController : Controller
RC02 {
RC03     public void AddComment(string product, string comment)
RC04     {
RC05         var connectionString = CloudConfigurationManager.GetSetting
RC06         ("Microsoft.ServiceBus.ConnectionString");
RC07         var client = QueueClient.CreateFromConnectionString(connectionString, "comments");
RC08     }
RC09     [AccessRateFilter]
RC10     public IEnumerable<Uri> PublicReviews()
RC11     {
RC12     }
RC13 }
RC14 }
```

TranslateJob.cs

Relevant portions of the TranslateJob.cs file shown below. Line numbers are included for reference only and include a two-character prefix that denotes the specific file to which the code belongs.

```
TJ01 public class TranslateJob
TJ02 {
TJ03     ...
TJ04     public class Translator
TJ05     {
TJ06         public string Translate(string input)
TJ07         {
TJ08             ...
TJ09         }
TJ10     }
TJ11 }
```

AccessRateFilter.cs

Relevant portions of the AccessRateFilter.cs file are shown below. Line numbers are included for reference only and include a two-character prefix that denotes the specific file to which the code belongs.

```
AR01 public class AccessRateFilter : ActionFilterAttribute
AR02 {
AR03     public override void OnActionExecuting(ActionExecutingContext filterContext)
AR04     {
AR05
AR06     }
AR07
AR08     private static IDatabase getDatabase()
AR09     {
AR10         var connStr = CloudConfigurationManager.GetSetting("Microsoft.Redis.ConnectionString");
AR11         var connection = ConnectionMultiplexer.Connect(connStr);
AR12         var db = connection.GetDatabase();
AR13         return db;
AR14     }
AR15
AR16     private static string getIPAddress(ActionExecutingContext filterContext)
AR17     {
AR18         return filterContext.RequestContext.HttpContext.Request.UserHostAddress;
AR19     }
AR20 }
```

NEW QUESTION 63

HOTSPOT

You need to add code after line RC06 to complete the implementation of the AddComment method.

How should you complete the relevant code segment? To answer, select the appropriate code segment from each list in the answer area.

```
var sessionId = 
client.Send()
{
    SessionId = sessionId,
};
client.Send()
{
    SessionId = sessionId,
};
```


Answer:

Explanation:

```
var sessionId = 

product;  
User.Identity.Name;  
Guid.NewGuid().ToString();

  
  
client.Send(

new QueueMessage(comment)  
new BrokeredMessage(comment)

  
  
{  
    SessionId = sessionId,  
  
});  
  
client.Send(

new QueueMessage(User.Identity.Name)  
new BrokeredMessage(User.Identity.Name)

  
  
{  
    SessionId = sessionId,  
  
});
```

NEW QUESTION 66

You need to create a web job that performs post processing for reviews.
 What should you do?

- A. Rename the post-processing file to action.py, and add a file named settings.job that includes the following content:{"is_in_place": false}
- B. Rename the post-processing file to run.exe, and add a file named settings.job that includes the following content:{"is_in_place": false}
- C. Rename the post-processing file to run.py, and add file named settings.job that includes the following content:{"is_in_place": true}
- D. Rename the post-processing file to action.exe, and add a file named settings.job that includes the following content:{"is_in_place": true}

Answer: C

Explanation: Some product reviews contain language specific terms that require additional processing. The additional processing is done by a python script named cleanup.py. The script relies on a data file names term.data that contains terms and their replacement values. All running instances of the script must use the same instance of the data file.

You need to implement the OnActionExecuting method of the AccessRateFilter class.

How should you complete the relevant code segment? To answer, select the appropriate code segment from each list in the answer area.

NOTE: Each correct selection is worth one point.


```
var db = getDatabase();
var ipaddress = getIPAddress(filterContext);

var count =
    db.StringGet(ipaddress)
    db.HashGet(ipaddress, null)
    db.StringGetSet(ipaddress, 10);

var requests = 0;
if (count.IsInteger && count.TryParse(out requests))
{
    if (requests > 10)
    {
        filterContext.Result =
            new RedirectResult("/ratelimit.html");
            new HttpStatusCodeResult(500, "/ratelimit.html");
            new FilePathResult("/ratelimit.html", "Rate Limit");

        return;
    }
}
```

```
db.StringIncrement(ipaddress);
db.HashIncrement(ipaddress, 1);
db.SortedSetIncrement(ipaddress, "count", 1);
```

Answer:

```
var db = getDatabase();
var ipaddress = getIPAddress(filterContext);

var count =
    db.StringGet(ipaddress)
    db.HashGet(ipaddress, null)
    db.StringGetSet(ipaddress, 10);

var requests = 0;
if (count.IsInteger && count.TryParse(out requests))
{
    if (requests > 10)
    {
        filterContext.Result =
            new RedirectResult("/ratelimit.html");
            new HttpStatusCodeResult(500, "/ratelimit.html");
            new FilePathResult("/ratelimit.html", "Rate Limit");

        return;
    }
}
```

```
db.StringIncrement(ipaddress);
db.HashIncrement(ipaddress, 1);
db.SortedSetIncrement(ipaddress, "count", 1);
```

NEW QUESTION 69

You need to enable monitoring and diagnostic logging for the VMs.

Solution: Run the command-line interface (CLI) command `azure insights diagnostic set` and include the resource identifier for the storage account and VM.

Does the solution meet the goal?

- A. Yes
- B. No

Answer: B

NEW QUESTION 74

You need to enable monitoring and diagnostic logging for the VMs.

Solution: Run the Azure PowerShell command `Set-AzureRmDiagnosticSetting` and include the resource identifier for the storage account and VM.

Does the solution meet the goal?

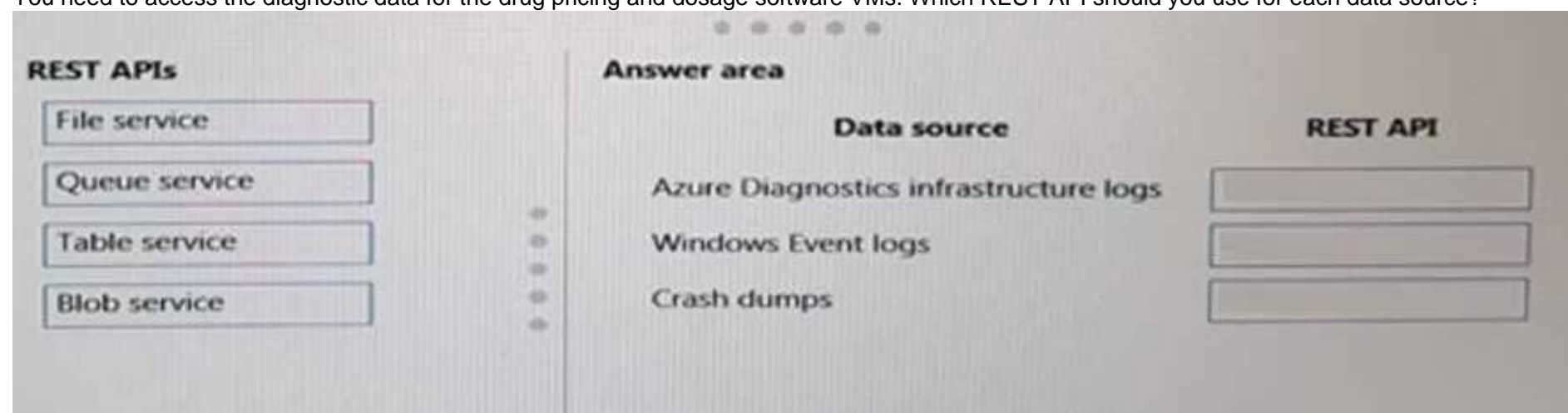
- A. Yes
- B. No

Answer: B

NEW QUESTION 76

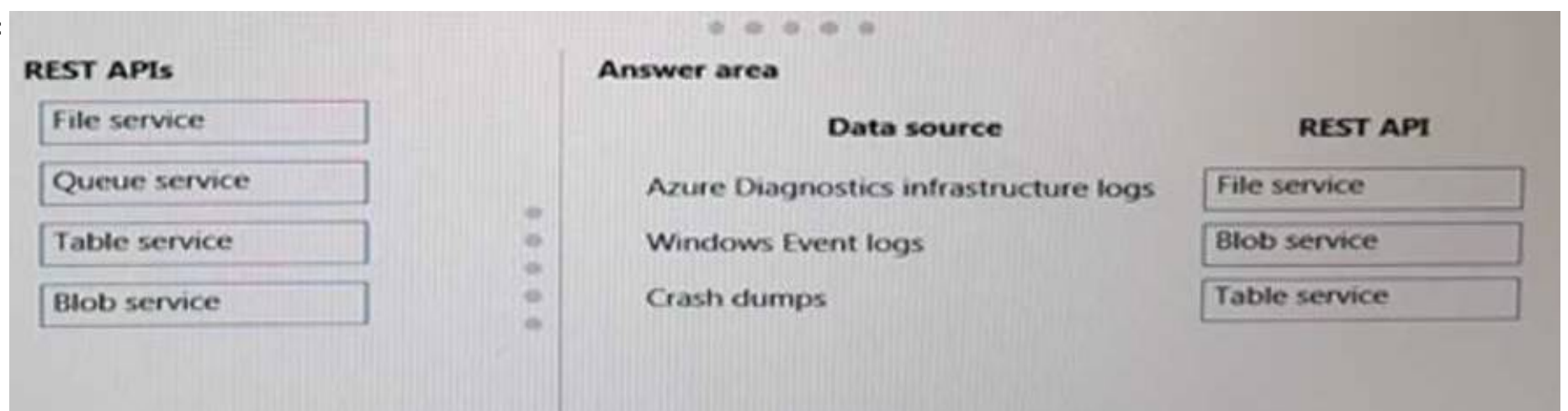
DRAG DROP

You need to access the diagnostic data for the drug pricing and dosage software VMs. Which REST API should you use for each data source?



Answer:

Explanation:



NEW QUESTION 79

You need to update the Swagger API metadata to support all drug pricing and dosage software API

What are two possible ways to achieve the goal?

- A. Update the Network Security Group security rules.
- B. Update all methods with XML documentation comments and update the Swashbuckle configuration to use the XML documentation.
- C. Update all controller methods by giving the methods unique names.
- D. Create a custom `IOperatunel` filter and cause swashbucke to use the implementation
- E. Add the `SaggerResponse` attribute to the Web API action method.

Answer: BD

NEW QUESTION 83

You need to secure all patient data stored in persistent storage. What should you do?

- A. Enable Transparent Data Encryption (TDE) for all database instances.
- B. Use Azure Disk Encryption and a Key Fncryption Key (KEK) to enable and deploy Azure disk encryption for Azure VMs.

- C. Use the Azure Security Center to define policies for the Azure subscription and resource groups to include daily scanning of all VMs.
- D. Use the Azure Storage Client Library and the Azure Key Vault to enable client-side encryption by using a content encryption key (CEK).

Answer: A

NEW QUESTION 87

DRAG DROP

You need to ensure that the drug dosage endpoint is always resolved and accessible. Which three actions should you perform in sequence?

Actions

Setup the Azure Load Balancer rules with the proper port.

Update the Service Fabric cluster Azure Resource Manager template to include a reverse proxy.

Configure a new state provider.

Modify the service manifest to include a stateful endpoint.

Run the Azure PowerShell cmdlet `Remove-ServiceFabricNodeState` with the appropriate node name.

Redeploy the Service Fabric cluster.

Update the Network Security Group with the correct inbound rules.

Update the Service Fabric cluster to use OWIN self-hosting.

>

<

Answer area

1

2

3

>

<

Answer:

Explanation:

Actions

Setup the Azure Load Balancer rules with the proper port.

Update the Service Fabric cluster Azure Resource Manager template to include a reverse proxy.

Configure a new state provider.

Modify the service manifest to include a stateful endpoint.

Run the Azure PowerShell cmdlet `Remove-ServiceFabricNodeState` with the appropriate node name.

>

<

Answer area

1

2

3

>

<

Redeploy the Service Fabric cluster.

Update the Service Fabric cluster to use OWIN self-hosting.

Update the Network Security Group with the correct inbound rules.

Case Study: 10
Contoso, Ltd (B)
Background

Contoso, Ltd designs and manufactures medical vaccines. The company has sales and manufacturing facilities in locations all over the world. The company must permanently retain all data from clinical testing of vaccines. is subject to penalties and lawsuits if any data is lost. You maintain an application that allow, medical professionals to manage data about patients, vaccine results, and possible side effects of the vaccines. You host the application in Microsoft Azure and manage the application by using the Azure portal.

Current Environment Application:

You have two on premises applications that conned lo Azure resources. The first application is named Contosol. Contoso uses Windows Identity foundation (WIF) and includes a secured area of the application that is used tor Single sign on with credentials from Azure Active Directory (AD). The second application is an auditing application named ClinicalSearch. It allows you to search for clinical test results. The application resides on an Azure Virtual Machine (VM) and must meet Azure Service Level Agreement (SLAs) for availability Auditors will be given access to the application in 24 hour interval. You have a data collection and distribution service named DataCollect. The service runs Node.js in an Azure cloud service. The service must use a minimum of 2048-bit encryption.

Infrastructure:

You provision the following objects:

- Premium storage
- TwoSQL Azure databases named CONTOSO-SQL1 and CONTOSO-SQL2. CONTOSO-SQL1 will store Current product data and will be scaled up to optimize

performance during peak hours. CONTOSO- SQL2 will store archived product data.

- Table Storage

Deployment

You deploy resources as a resource group by using Azure Resource Manager (ARM). You use templates to deploy resources to different environments. The cloud service is deployed using standard methods. You provide medical professionals and other clients access to the storage resources.

Problem Statements

Users are reporting that during peak hours, it takes a long time to save documents to the environment.

Rrsearchers report that the DataCollect service takes a long time to respond when data is being sent to the service.

Monitoring

You enable minimal monitoring metrics for application. You enable boot diagnostics for all VMs

NEW QUESTION 92

HOTSPOT

You need to configure the solutions.

For each solution, which protocol should you use?

Solution	Protocol
Contoso1	<div><div></div><div>SAML-P</div><div>OAuth</div></div>
ClinicalSearch	<div><div></div><div>SAML-P</div><div>OAuth</div></div>

Answer:

Explanation:

Solution	Protocol
Contoso1	<div><div></div><div>SAML-P</div><div></div></div>
ClinicalSearch	<div><div></div><div>OAuth</div><div></div></div>

NEW QUESTION 93

You need to ensure that users can upload transcripts and notes.

Solution: You use Azure Resource Manager (ARM) to provision a storage account, and then use ARM to provision an Azure Cosmos DB database.

Does the solution meet the goal?

- A. Yes
- B. No

Answer: A

NEW QUESTION 97

DRAG DROP

You need to ensure that operations are billed correctly. Which code should you insert at line AP09?

Code fragments	Answer area
<div><div>ActorServiceSettings</div><div>ActorGarbageCollectionSettings</div><div>ReentrancyMode</div><div>ActorMethodContext</div><div>ActorReentrancyMode.Disallowed</div><div>ActorReentrancyMode.LogicalCallContext</div><div>ActorCallType.ActorInterfaceMethod</div><div>ActorCallType.ReminderMethod</div></div>	<div><div></div> = new <div></div><div>{</div><div><div></div> = <div></div></div><div>}</div></div>

Answer:

Explanation:

Code fragments

ActorServiceSettings

ActorGarbageCollectionSettings

ReentrancyMode

ActorMethodContext

ActorReentrancyMode.Disallowed

ActorReentrancyMode.LogicalCallContext

ActorCallType.ActorInterfaceMethod

ActorCallType.ReminderMethod

Answer area

ActorGarbageCollectionSettings

 = new

ActorReentrancyMode.Disallowed

{

ActorReentrancyMode.LogicalCallContext

 =

ActorServiceSettings

}

NEW QUESTION 100

You need to ensure that users can upload transcripts and notes.
Solution: You create a virtual machine (VM) image that contains a Server Message Block (SMB) share, and then use Azure Resource Manager (ARM) to provision a VM based on the image
Does the solution meet the goal?

- A. Yes
- B. No

Answer: A

NEW QUESTION 105

HOTSPOT
You need to ensure that the Web App scales correctly.
For each option, which value should you use? To answer, select the appropriate value from each list in the answer area.
NOTE: Each correct selection is worth one point.

Answer Area

Option	Value
Hosting plan	<div><div></div><div>Free</div><div>Basic</div><div>Standard</div></div>
Performance metric	<div><div></div><div>CPU</div><div>Instance count</div></div>
Metric value	<div><div></div><div>25%</div><div>50%</div><div>75%</div></div>

Answer:

Explanation:

Answer Area

Option	Value
Hosting plan	<div>▼</div> <div>Free</div> <div>Basic</div> <div>Standard</div>
Performance metric	<div>▼</div> <div>CPU</div> <div>Instance count</div>
Metric value	<div>▼</div> <div>25%</div> <div>50%</div> <div>75%</div>

NEW QUESTION 109

You need to use the least expensive App Service plan tier that will allow you to deploy and roll back the Contoso Web App. Which App Service plan tier should you use?

- A. Shared
- B. Standard
- C. Premium
- D. Free
- E. Basic

Answer: B

NEW QUESTION 110

You have an ASP.NET application that runs in a cloud service. A new version of the application is ready for release. The new version contains code changes and new SSL certificates. The application consists of six instances of a web role and four instances of a worker role. The application performs at or near full capacity. The cloud service uses the default number of fault domains and upgrade domains. You plan to deploy the new version of the application. The performance and capacity of the web roles must not degrade during the deployment. Temporary degradation of the worker roles is acceptable. The deployment must take a maximum of six hours. You need to deploy the new version of the ASP.NET application to the cloud service. Which two approaches will achieve the goal? Each correct answer presents a complete solution.

- A. Increase the number of web role instances to eight, and then deploy the new version of the application by using an in-place update.
- B. Reduce the number of web role instances to six after the upgrade is completed.
- C. Deploy the new version of the application by using an in-place update.
- D. Use upgrade domains to ensure that there is sufficient capacity during the upgrade.
- E. Deploy the new version of the application into the staging slot for the cloud service.
- F. Then activate the new version of the application by swapping virtual IP (VIP) addresses.
- G. Delete the old version of the application, and deploy the new version of the application.

Answer: BC

NEW QUESTION 112

DRAG DROP

The Azure Queue service hosts a queue named userRegistrationQueue. You are developing a web job to process messages from the queue. You create a new console application by using Microsoft Visual Studio. You also create an Azure storage connection string and store the connection string in the application configuration file.

All trigger listeners and jobs must run on the current thread.

You need to ensure that the web job processes the messages from the queue.

How should you complete the relevant code? To answer, drag the appropriate code segments to the correct location or locations. Each code segment may be used once, more than once, or not at all. You may need to drag the split bar between panes or scroll to view content.

Code Segments	Answer Area
<pre>var host = new Microsoft.Azure.Jobs.JobHost();</pre>	<pre>static void Main() { var cloudQueue = CreateCloudQueue(); AddMessageToQueue(cloudQueue); <div></div> <div></div> }</pre>
<pre>var host = new Microsoft.Azure.Jobs.JobHostConfiguration();</pre>	
<pre>host.RunOnBackgroundThread();</pre>	
<pre>host.RunAndBlock();</pre>	
<pre>host.GetService(typeof (CloudQueue));</pre>	
<pre>host.NameResolver.Resolve("userRegistrationQueue");</pre>	

Answer:

Explanation: Code Segments

Code Segments	Answer Area
<pre>var host = new Microsoft.Azure.Jobs.JobHost();</pre>	<pre>static void Main() { var cloudQueue = CreateCloudQueue(); AddMessageToQueue(cloudQueue); <div>var host = new Microsoft.Azure.Jobs.JobHost();</div> <div>host.RunAndBlock();</div> } </pre>
<pre>var host = new Microsoft.Azure.Jobs.JobHostConfiguration();</pre>	
<pre>host.RunOnBackgroundThread();</pre>	
<pre>host.RunAndBlock();</pre>	
<pre>host.GetService(typeof (CloudQueue));</pre>	
<pre>host.NameResolver.Resolve("userRegistrationQueue");</pre>	

NEW QUESTION 113

You have a website that is hosted on Azure. You connect to the site by using the URI <http://www.contoso.com>. You plan to publish a new version of the website. You need to acquire the publishing profile for the website.

Which two actions will achieve the goal? Each correct answer presents a complete solution.

- A. Run the following Windows PowerShell cmdlet: `Get-AzurePublishSettingsFile`
- B. Run the following Windows PowerShell cmdlet: `Get-AzureSubscription`
- C. Navigate to the following URI: <https://www.contoso.com/download/publishprofile.aspx>
- D. Navigate to the following URI: <https://windows.azure.com/download/publishprofile.aspx>

Answer: AD

NEW QUESTION 118

HOTSPOT

You use the storage client library to develop an application that manages Azure table storage data.

The application reports error codes when it saves data. You must use a custom retry policy to handle the error codes. The custom retry policy must meet the following requirements:

You create the following code segment. Line numbers included for reference only.

```
01 public class CustomRetryPolicy : IRetryPolicy
02 {
03     private readonly int _maxRetryAttempts = 10;
04     private readonly TimeSpan _defaultRetryInterval = TimeSpan.FromSeconds(5);
05     public CustomRetryPolicy(TimeSpan deltaBackoff, int retryAttempts)
06     {
07         _maxRetryAttempts = retryAttempts;
08         _defaultRetryInterval = deltaBackoff;
09     }
10     public IRetryPolicy CreateInstance()
11     {
12         return new CustomRetryPolicy(_defaultRetryInterval, _maxRetryAttempts);
13     }
14
15 }
```

You need to insert code at line 14 to implement the retry policy.

How should you complete the relevant code? To answer, select the appropriate option or options in the answer area.

Answer Area

```
public bool ShouldRetry(int currentRetryCount, int statusCode,
    Exception lastException, out TimeSpan retryInterval,
    OperationContext operationContext)
{
    retryInterval = _defaultRetryInterval;

    if (
        _maxRetryAttempts != currentRetryCount
        currentRetryCount &gt;= _maxRetryAttempts
        retryInterval &gt;= _defaultRetryInterval
        retryInterval == _defaultRetryInterval
    )

    {
        return false;
    }

    if (
        (HttpStatusCode) statusCode != HttpStatusCode.Conflict
        (HttpStatusCode) statusCode == HttpStatusCode.Moved
        (HttpStatusCode) statusCode != HttpStatusCode.ExpectationFailed
        (HttpStatusCode) statusCode != HttpStatusCode.Unauthorized
    )

    {
        return false;
    }

    if (
        lastException.GetType() == typeof(AccessViolationException)
        lastException.GetType() == typeof(ContextMarshalException)
        lastException.GetType() != typeof(UnauthorizedAccessException)
        lastException.GetType() != typeof(StorageException)
    )

    {
        return false;
    }
    return true;
}
```

Answer:

Explanation:

Answer Area

```
public bool ShouldRetry(int currentRetryCount, int statusCode,
    Exception lastException, out TimeSpan retryInterval,
    OperationContext operationContext)
{
    retryInterval = _defaultRetryInterval;

    if (
        maxRetryAttempts != currentRetryCount
        currentRetryCount &gt;= _maxRetryAttempts
        retryInterval &gt;= _defaultRetryInterval
        retryInterval == _defaultRetryInterval
    )
    {
        return false;
    }

    if (
        (HttpStatusCode) statusCode != HttpStatusCode.Conflict
        (HttpStatusCode) statusCode == HttpStatusCode.Moved
        (HttpStatusCode) statusCode != HttpStatusCode.ExpectationFailed
        (HttpStatusCode) statusCode != HttpStatusCode.Unauthorized
    )
    {
        return false;
    }

    if (
        lastException.GetType() == typeof(AccessViolationException)
        lastException.GetType() == typeof(ContextMarshalException)
        lastException.GetType() != typeof(UnauthorizedAccessException)
        lastException.GetType() != typeof(StorageException)
    )
    {
        return false;
    }
    return true;
}
```

NEW QUESTION 121

You deploy a website to Azure. When the website starts, it loads and caches common data. Updates to the website must occur without downtime or performance degradation that is noticeable to users.

You need to upgrade to a new version of website code. What should you do?

- ☐ A. Create a staging slot for the new version of the website. Run the following Windows PowerShell command, and then deploy the new code.

```
Switch-AzureWebsiteSlot -Name "MyWebsiteName"
```

- ☐ B. Create a staging slot for the new version of the website. Deploy the new code to that slot. Then run the following Windows PowerShell command:

```
Switch-AzureWebsiteSlot -Name "MyWebsiteName"
```

- ☐ C. Run the following Windows PowerShell command:

```
New-AzureWebsite -Name "Staging" -Location "East US"
```

Deploy the new code to the staging site. Then run the following Windows PowerShell command:

```
Switch-AzureWebsiteSlot -Name "MyWebsiteName"
```

- ☐ D. Create a staging slot for the new version of the website. Run the following Windows PowerShell command:

```
Switch-AzureWebsiteSlot -Name "MyWebsiteName"
```

Then deploy the new code to the staging slot.

- A. Option A
- B. Option B
- C. Option C
- D. Option D

Answer: B

NEW QUESTION 122

HOTSPOT

You plan to migrate a website named Contoso from one hosting plan to another hosting plan. The website is currently in a hosting plan named webhostingplan1. You create a resource group named ContosoGroup. You create the following PowerShell script by using the Azure PowerShell tools. Line numbers are included for reference only.

```
01 $webhostingplan = @{"serverfarm" = "webhostingplan2"}
02 Set-AzureResource -name Contoso -ResourceGroupName ContosoGroup -ResourceType Microsoft.Web/sites `
    -apiversion 2014-04-01 -PropertyObject $webhostingplan
03 Get-AzureResource -name Contoso -ResourceGroupName ContosoGroup -ResourceType Microsoft.Web/sites `
    -apiversion 2014-04-01
```

For each of the following statements, select Yes if the statement is true. Otherwise, select No.

Answer Area

	Yes	No
The command in line 01 defines a variable that stores a hash table.	<input type="radio"/>	<input type="radio"/>
The command in line 02 assigns the website to the ContosoGroup resource group.	<input type="radio"/>	<input type="radio"/>
The command in line 02 assigns the website to a hosting plan named webhostingplan2 .	<input type="radio"/>	<input type="radio"/>

Answer:

Explanation: Answer Area

	Yes	No
The command in line 01 defines a variable that stores a hash table.	<input type="radio"/>	<input checked="" type="radio"/>
The command in line 02 assigns the website to the ContosoGroup resource group.	<input type="radio"/>	<input checked="" type="radio"/>
The command in line 02 assigns the website to a hosting plan named webhostingplan2 .	<input type="radio"/>	<input checked="" type="radio"/>

NEW QUESTION 124

You maintain an application that is used by local food delivery companies. When a customer requests a delivery, the application sends a message to all of the delivery companies. One company accepts the request and fulfills the order. The application currently supports orders of 100 products fewer. Some of the delivery companies can now deliver large orders that contain up to 500 products. You must modify the application so that it supports both small orders and large orders. Messages about large orders should be sent to only delivery companies that can fulfill them. Messages about small orders should be sent to all delivery companies. Which service should you use?

- A. Azure Service Bus Queue
- B. Azure Service Bus Relay
- C. Azure Service Bus Topics
- D. Azure Service Bus Namespace

Answer: C

NEW QUESTION 128

HOTSPOT

You create a cache for a project by using Azure Redis Cache. You are writing test code that verifies that the cache is available. You need to ensure that data can be saved to the cache and retrieved from the cache. How should you complete the relevant code? To answer, select the appropriate option or options in the answer area.

Answer Area

```
using System;
```

```
using StackExchange.Redis;
using Microsoft.WindowsAzure.Caching;
using Microsoft.ApplicationServer.Caching;
```

```
public class RedisCacheTester
{
    public bool TestRedisCache(string name, string key)
    {
        var redisConfiguration = String.Format("{0}.redis.cache.windows.net, password={1}", name, key);
        var redisConnection = ConnectionMultiplexer.Connect(redisConfiguration);

        IDatabase cache = redisConnection.GetDatabase();
        IDatabase cache = redisConnection.GetDatabase(name);
        System.Web.Caching.Cache cache = redisConnection.GetDatabase();
        System.Web.Caching.Cache cache = redisConnection.GetDatabase(name);

        var cacheKey = "test key";
        var cacheValue = "test data";

        cache.SetString(cacheKey, cacheValue);
        cache.SetStringOrUpdate(cacheKey, cacheValue);
        cache.SetString(name, cacheKey, cacheValue);

        return (cacheValue == cache.StringGet(cacheKey));
    }
}
```

Answer:

Explanation: **Answer Area**

```
using System;
```

```
using StackExchange.Redis;
using Microsoft.WindowsAzure.Caching;
using Microsoft.ApplicationServer.Caching;
```

```
public class RedisCacheTester
{
    public bool TestRedisCache(string name, string key)
    {
        var redisConfiguration = String.Format("{0}.redis.cache.windows.net, password={1}", name, key);
        var redisConnection = ConnectionMultiplexer.Connect(redisConfiguration);

        IDatabase cache = redisConnection.GetDatabase();
        IDatabase cache = redisConnection.GetDatabase(name);
        System.Web.Caching.Cache cache = redisConnection.GetDatabase();
        System.Web.Caching.Cache cache = redisConnection.GetDatabase(name);

        var cacheKey = "test key";
        var cacheValue = "test data";

        cache.SetString(cacheKey, cacheValue);
        cache.SetStringOrUpdate(cacheKey, cacheValue);
        cache.SetString(name, cacheKey, cacheValue);

        return (cacheValue == cache.StringGet(cacheKey));
    }
}
```

NEW QUESTION 129

You are maintaining an application that uses the Azure Content Delivery Network (CDN) to serve terabytes of content that is stored in page blobs. Your bill for CDN services is higher than you expect. You need to monitor the application to find issues that increase costs.

Which two operations should you monitor? Each correct answer presents part of the solution.

- A. The Time-To-Live (TTL) of the blobs.
- B. The country of origin for the client computer and the CDN region.
- C. The number of requests that result in an HTTP status code over 400.
- D. The allocated size of page blobs.
- E. The expiration date of the blobs.

Answer: BD

NEW QUESTION 132

You are modifying a web application so that it uses Azure Active Directory to manage users. You create a security group named Users and a security group named Administrators. The Administrators security group is a member of the Users security group. You create the following code segment. Line numbers are included for reference only.

```
01 function canAccessUserResources(userId) {  
02  
03 }  
04 function getGroupId(groupName) {  
05 ...  
06 }  
07 function domain() {  
08 ...  
09 }
```

You need to implement the canAccessUserResources function.
Which code segment should you insert at line 02?

- ☐ A.

```
var groupId = getGroupId("Users");  
var link = domain().concat("/users/", userId, "/memberOf?api-version=2013-04-05");  
var json = $.getJSON(link);  
for (entry in json.Value)  
    if (entry.objectId == groupId)  
        return true;  
return false;
```
- ☐ B.

```
var groupId = getGroupId("Users");  
var link = domain().concat("/isMemberOf?api-version=2013-04-05");  
var json = $.post(link, { groupId: groupId, memberId: userId });  
return json.value;
```
- ☐ C.

```
var groupId = getGroupId("User");  
var link = domain().concat("/roles/", groupId, "?api-version=2013-04-05");  
var json = $.getJSON(link);  
return json.value;
```
- ☐ D.

```
var groupId = getGroupId("Users");  
var link = domain().concat("/groups/", groupId, "/members?api-version=2013-04-05");  
var json = $.getJSON(link);  
for (entry in json.Value)  
    if (entry.objectId == userId)  
        return true;  
return false;
```

- A. Option A
- B. Option B
- C. Option C
- D. Option D

Answer: C

NEW QUESTION 134

You store data by using table storage in Azure. The storage analytics logs do not contain any data. You must configure the Azure storage account retain logs for the maximum length of time that Azure permits. In the Azure management portal, what should you do?

- A. Set the monitoring level to Minimal, and set the number of days the data in the logs is retained to 0.
- B. Set the monitoring level to Verbose, and set the number of days the data in the logs is retained to 365.
- C. Set the monitoring level to Minimal, and set the number of days the data in the logs is retained to 99.
- D. Set the monitoring level to Verbose, and set the number of days the data in the logs is retained to 30.

Answer: A

Explanation:

Ref: <http://azure.microsoft.com/en-gb/documentation/articles/storage-monitor-storage-account/>

NEW QUESTION 137

You host an application on an Azure virtual machine (VM) that uses a data disk. The application performs several input and output operations per second. You need to disable disk caching for the data disk. Which two actions will achieve the goal? Each answer presents a complete solution.

- A. Use the Azure Resource Manager REST API
- B. Use the Service Management REST API.
- C. Run the following Windows PowerShell cmdlet: Remove-AzureDataDisk
- D. Run the following Windows PowerShell cmdlet: Set-AzureDataDisk

Answer: AD

Explanation:

Ref: <http://msdn.microsoft.com/en-us/library/azure/jj157190.aspx>

NEW QUESTION 139

HOTSPOT

Your company runs existing applications on virtual machines (VMs) that are hosted on Azure.

You are preparing additional Azure services to support the existing applications. You run the following script. Line numbers are provided for reference only.

```
01 Add-AzureAccount
02 Select-AzureSubscription -SubscriptionName (Get-AzureSubscription)[0].SubscriptionName
03 New-AzureStorageAccount -Location "East US" -StorageAccountName "store314159265"
04 Set-AzureSubscription -CurrentStorageAccountName "store314159265" -SubscriptionName $subscriptionName
05 $vmImageNameDb = 'c290a6b031d841e09f2da759bbabe71f__Oracle-Database-121010.v3-SE-Lnx'
06 $vmImageNameApp = 'a699494373c04fc0bc8f2bb1389d6106__Windows-Server-2012-R2-201405.01-en.us-127GB.vhd'
07 $scs = New-AzureService -ServiceName "myService27182" -Location "East US"
08 $vmConfigDb = New-AzureVMConfig -Name "MyDb" -InstanceSize Large -ImageName $vmImageNameDb | `
    Add-AzureProvisioningConfig -Linux -LinuxUser 'dbadmin314' -Password 'ou812?_159265' | `
    Add-AzureDataDisk -CreateNew -DiskSizeInGB 250 -DiskLabel 'dbdata' -LUN 0
09 $vmConfigDb | New-AzureVM -ServiceName "myService27182"
10 $vmConfigApp = New-AzureVMConfig -Name "MyApp" -InstanceSize Medium -ImageName $vmImageNameApp | `
    Add-AzureProvisioningConfig -Windows -AdminUsername 'winadm314' -Password 'W!3d03_K05t07'
11 $vmConfigApp | New-AzureVM -ServiceName "myService27182"
```

For each of the following statements, select Yes if the statement is true. Otherwise, select No.

Answer Area

	Yes	No
The command in line 11 creates a new VM that has one local data disk that uses Azure blob storage.	<input type="radio"/>	<input type="radio"/>
The VM that runs Linux and the VM that runs Windows can communicate with each other by using internal IP addresses.	<input type="radio"/>	<input type="radio"/>
The VM that runs Windows can accept HTTP requests from the public Internet.	<input type="radio"/>	<input type="radio"/>

Answer:

Explanation: Answer Area

	Yes	No
The command in line 11 creates a new VM that has one local data disk that uses Azure blob storage.	<input type="radio"/>	<input checked="" type="radio"/>
The VM that runs Linux and the VM that runs Windows can communicate with each other by using internal IP addresses.	<input checked="" type="radio"/>	<input type="radio"/>
The VM that runs Windows can accept HTTP requests from the public Internet.	<input checked="" type="radio"/>	<input type="radio"/>

NEW QUESTION 140

You store data in an Azure blob. Data accumulates at a rate of 0.10 GB per day.

You must use storage analytics data to verify that the service level agreement (SLA) has been met and to analyze the performance of VHDs, including the pattern of usage.

Analytics data must be deleted when it is older than 100 days or when the total amount of data exceeds 10 GB.

You need to configure storage analytics and access the storage analytics data.

Which two approaches will achieve the goal? Each correct answer presents part of the solution.

- A. Disable the data retention policy.
- B. Access analytics data by using the Service Management REST APL
- C. Access analytics data by using the APIs used to read blob and table data.
- D. Configure a data retention policy of 100 days.

Answer: CD

NEW QUESTION 142

HOTSPOT

You store JSON data in a blob by using the Azure Blob service. Web applications access the JSON data by using client-side JavaScript calls. JSON data is stored in a container that is to allow anonymous access. Web applications that are allowed to make updates to the data have access to any necessary shared access signatures (SASs) and storage keys. You configure one -Origin Resource Sharing (CORS) rule for the https://fabrikam.com domain and then run the following method. Line numbers are provided for reference only.

```
01 void ConfigureBlobCorsRules(CloudBlobClient blobClient)
02 {
03     var blobServiceProperties = blobClient.GetServiceProperties();
04     var partnerCorsRule = new CorsRule();
05     partnerCorsRule.AllowedOrigins.Add("https://contoso.com");
06     partnerCorsRule.AllowedMethods = CorsHttpMethods.Post | CorsHttpMethods.Put;
07     partnerCorsRule.ExposedHeaders.Add("*");
08     partnerCorsRule.AllowedHeaders.Add("*");
09     blobServiceProperties.Cors.CorsRules.Add(partnerCorsRule);
10     var publicCorsRule = new CorsRule();
11     publicCorsRule.AllowedOrigins.Add("*");
12     publicCorsRule.AllowedMethods = CorsHttpMethods.Get;
13     publicCorsRule.ExposedHeaders.Add("*");
14     publicCorsRule.AllowedHeaders.Add("*");
15     blobServiceProperties.Cors.CorsRules.Add(publicCorsRule);
16     blobClient.SetServiceProperties(blobServiceProperties);
17 }
```

For each of the following statements, select Yes if the statement is true. Otherwise, select No.

Answer Area

	Yes	No
The CORS rule that was previously configured for https://fabrikam.com is no longer in effect after this method runs.	<input type="radio"/>	<input type="radio"/>
Partners from the https://contoso.com domain can access the configured storage by using the HTTP HEAD operation.	<input type="radio"/>	<input type="radio"/>
Partners from the https://contoso.com domain can access the configured storage service by using the HTTP GET operation.	<input type="radio"/>	<input type="radio"/>

Answer:

Explanation: Answer Area

	Yes	No
The CORS rule that was previously configured for https://fabrikam.com is no longer in effect after this method runs.	<input checked="" type="radio"/>	<input type="radio"/>
Partners from the https://contoso.com domain can access the configured storage by using the HTTP HEAD operation.	<input type="radio"/>	<input checked="" type="radio"/>
Partners from the https://contoso.com domain can access the configured storage service by using the HTTP GET operation.	<input type="radio"/>	<input checked="" type="radio"/>

NEW QUESTION 144

HOTSPOT

Tailspin Toys uses a website to manage its inventory. The website is hosted on Azure. You are writing a Windows Store app that uses data from the blob storage. You need to retrieve an image from the following URI: https://tailspintoys.blob.core.windows.net/Trains/Caboose2jpg. How should you complete the relevant code? To answer, select the appropriate code segments in the answer area.

Answer Area

```
CloudStorageAccount storageAccount = CloudStorageAccount.Parse(
    CloudConfigurationManager.GetSetting("StorageConnectionString"));
CloudBlobClient blobClient = storageAccount. (v) ();
    BlobEndpoint
    FileEndpoint
    CreateCloudBlobClient
    CreateCloudFileClient

CloudBlobContainer blobContainer =
    blobClient. (v) ("trains");
    GetContainerReference
    GetBlobReferenceFromServerAsync

CloudBlockBlob myBlob =
    blobContainer. (v) ("Caboose2.jpg");
    GetBlockBlobReference
    GetDirectoryReference

using (var fileStream = System.IO.File.OpenWrite
(@"path\myfile"))
{
    myBlob.DownloadToStream(fileStream);
}
```

Answer:

Explanation: Answer Area

```
CloudStorageAccount storageAccount = CloudStorageAccount.Parse(
    CloudConfigurationManager.GetSetting("StorageConnectionString"));
CloudBlobClient blobClient = storageAccount. (v) ();
    BlobEndpoint
    FileEndpoint
    CreateCloudBlobClient
    CreateCloudFileClient

CloudBlobContainer blobContainer =
    blobClient. (v) ("trains");
    GetContainerReference
    GetBlobReferenceFromServerAsync

CloudBlockBlob myBlob =
    blobContainer. (v) ("Caboose2.jpg");
    GetBlockBlobReference
    GetDirectoryReference

using (var fileStream = System.IO.File.OpenWrite
(@"path\myfile"))
{
    myBlob.DownloadToStream(fileStream);
}
```

NEW QUESTION 149

You are creating virtual machines (VMs) that are hosted on Azure.

You must be able to change the Remote Desktop access settings for the VMs. You must also be able to change the password for the built-in administrator account on all VMs. You identify the VMAccess VM extensions that have the required capabilities.

You need to enable the VMAccess VM extensions. Which approach should you use?

- A. Download and install the Microsoft Installer file to enable the VM Agent on each VM.
- B. Use the Azure management portal to restart each VM.
- C. When you configure the new VMs, use the Azure management portal to install the VM Agent.
- D. For each VM, use Windows PowerShell cmdlets to enable the VM Agent and the VMAccess VM extensions.

Answer: D

NEW QUESTION 152

HOTSPOT

You use the Windows PowerShell Desired State Configuration (DSC) feature to configure your company's servers. Line numbers are included for reference only.

```
01 $ConfigurationData = @{
02     AllNodes = @(
03         @{NodeName = 'Server1';Role='Web'},
04         @{NodeName = 'Server2';Role='FileShare'}
05         @{NodeName = 'Server3';Role=@('FileShare','Web')}
06     )
07 }
08 configuration RoleConfiguration
09 {
10     param ($Roles)
11     switch ($Roles)
12     {
13         'FileShare'
14         {
15             WindowsFeature FileSharing
16             {
17                 Name = 'FS-FileServer'
18             }
19         }
20         'Web'
21         {
22             WindowsFeature Web
23             {
24                 Name = 'Web-Server'
25                 Ensure = 'Absent'
26             }
27         }
28     }
29 }
30 configuration MyFirstServerConfig
31 {
32     node $allnodes.NodeName
33     {
34         WindowsFeature snmp
35         {
36             Name = 'SNMP-Service'
37         }
38         RoleConfiguration MyServerRoles
39         {
40             Roles = $Node.Role
41             DependsOn = '[WindowsFeature]snmp'
42         }
43     }
44 }
```

For each of the following statements, select Yes if the statement is true. Otherwise, select No.

Answer Area

	Yes	No
The script configures SNMP service on all servers.	<input type="radio"/>	<input type="radio"/>
The script configures the Web Server (IIS) role on Server3.	<input type="radio"/>	<input type="radio"/>
Invoking the script within Windows PowerShell applies the desired state to all servers.	<input type="radio"/>	<input type="radio"/>

Answer:

Explanation: **Answer Area**

	Yes	No
The script configures SNMP service on all servers.	<input type="radio"/>	<input checked="" type="radio"/>
The script configures the Web Server (IIS) role on Server3.	<input type="radio"/>	<input checked="" type="radio"/>
Invoking the script within Windows PowerShell applies the desired state to all servers.	<input checked="" type="radio"/>	<input type="radio"/>

NEW QUESTION 154

HOTSPOT

You have an existing server that runs Windows Server. You plan to create a base image of this server. You will use this base image to prepare several virtual servers for future use. After the base image is prepared, you will capture it by using the management portal. You must use the System Preparation Tool (Sysprep) to prepare the server so that the base image can be captured.

You need to prepare the server so that the base image can be captured.

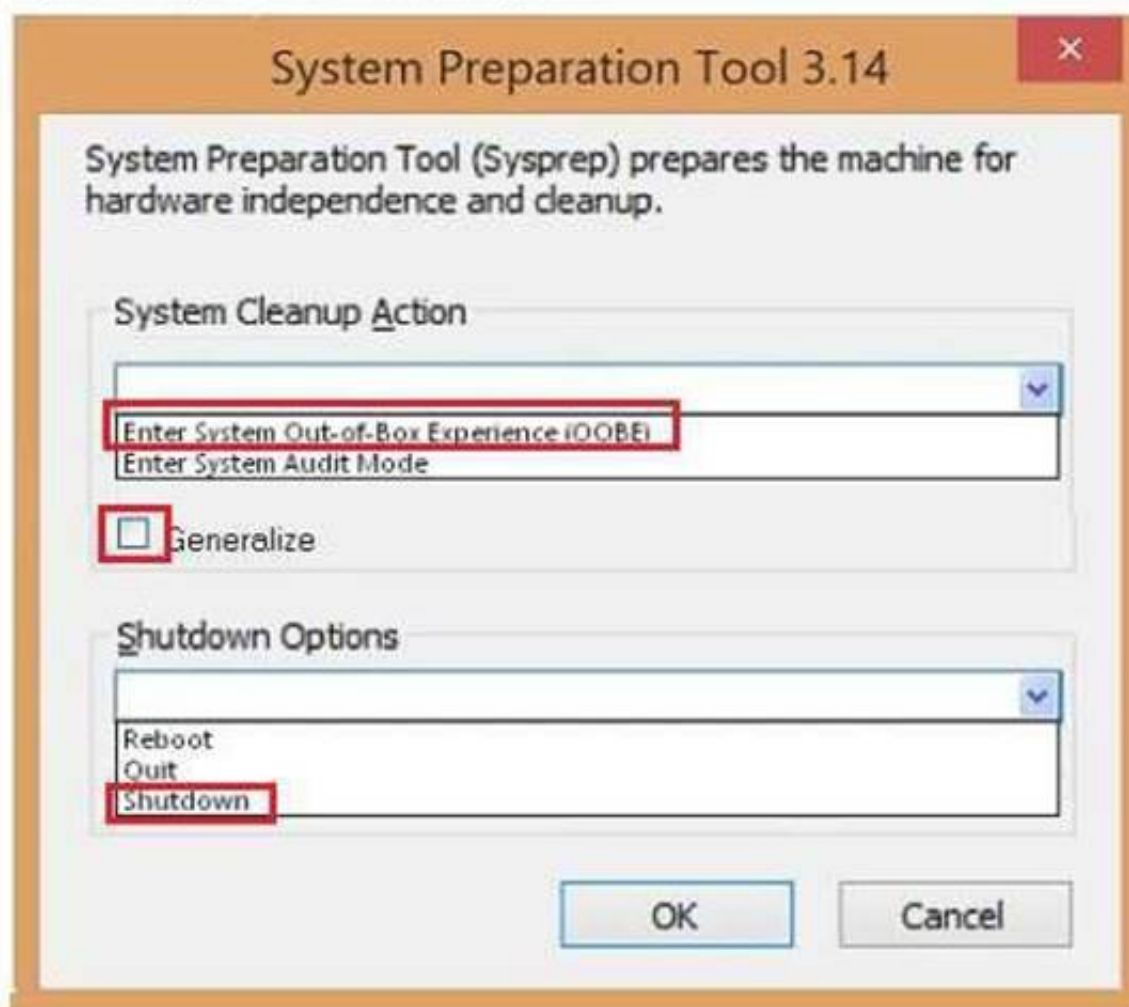
What should you do? To answer, configure the appropriate options in the dialog box in the answer area.

System Preparation Tool dialog box



Answer:

Explanation: **System Preparation Tool dialog box**



NEW QUESTION 156

You connect to an existing service over the network by using HTTP. The service listens on HTTP port 80. You plan to create a test environment for this existing service by using an Azure virtual machine (VM) that runs Windows Server.

The service must be accessible from the public Internet over HTTP port 8080. You need to configure the test environment.

Which two actions should you take? Each correct answer presents part of the solution.

- A. Configure an endpoint to route traffic from port 8080 to port 80.
- B. Configure an endpoint to route traffic from port 80 to port 8080.
- C. Ensure that the public IP address is configured as a static IP address.
- D. Configure the Server firewall to allow incoming and outgoing traffic on port 8080.
- E. Configure the Windows Server firewall to allow incoming and outgoing traffic on port 80.

Answer: AE

NEW QUESTION 160

HOTSPOT

You are developing a messaging solution for a financial services company named Adatum. The solution must integrate an application named Enrollment and an application named Activation.

The Enrollment application is used to enroll new customers. The Activation application is used to activate accounts for new customers.

You need to ensure that each message that the Enrollment application sends is stored in a queue for ten minutes before the Activation application uses the message.

How should you complete the relevant code? To answer, select the appropriate option or options in the answer area.

Answer Area

```
var address =
ServiceBusEnvironment.CreateServiceUri("
sb
nsmq
adatum.servicebus.windows.net/activate
",
"
sb
adatum.activation
adatum.servicebus.windows.net/activate
", string.Empty);

var ns = new
namespace
namespaceManager
ServiceBusNamespaceSettings
(address, new NamespaceManagerSettings())

{
OperationTimeout =
10
10000
new TimeSpan(0,10,0)
});
ns.CreateQueue("ActivationQueue");
```

Answer:

Explanation:

Answer Area

```
var address =
ServiceBusEnvironment.CreateServiceUri("sb",
"adatum.activation", string.Empty);
var ns = new NamespaceManager (address, new NamespaceManagerSettings()
{
    OperationTimeout = new TimeSpan(0,10,0)
});
ns.CreateQueue("ActivationQueue");
```

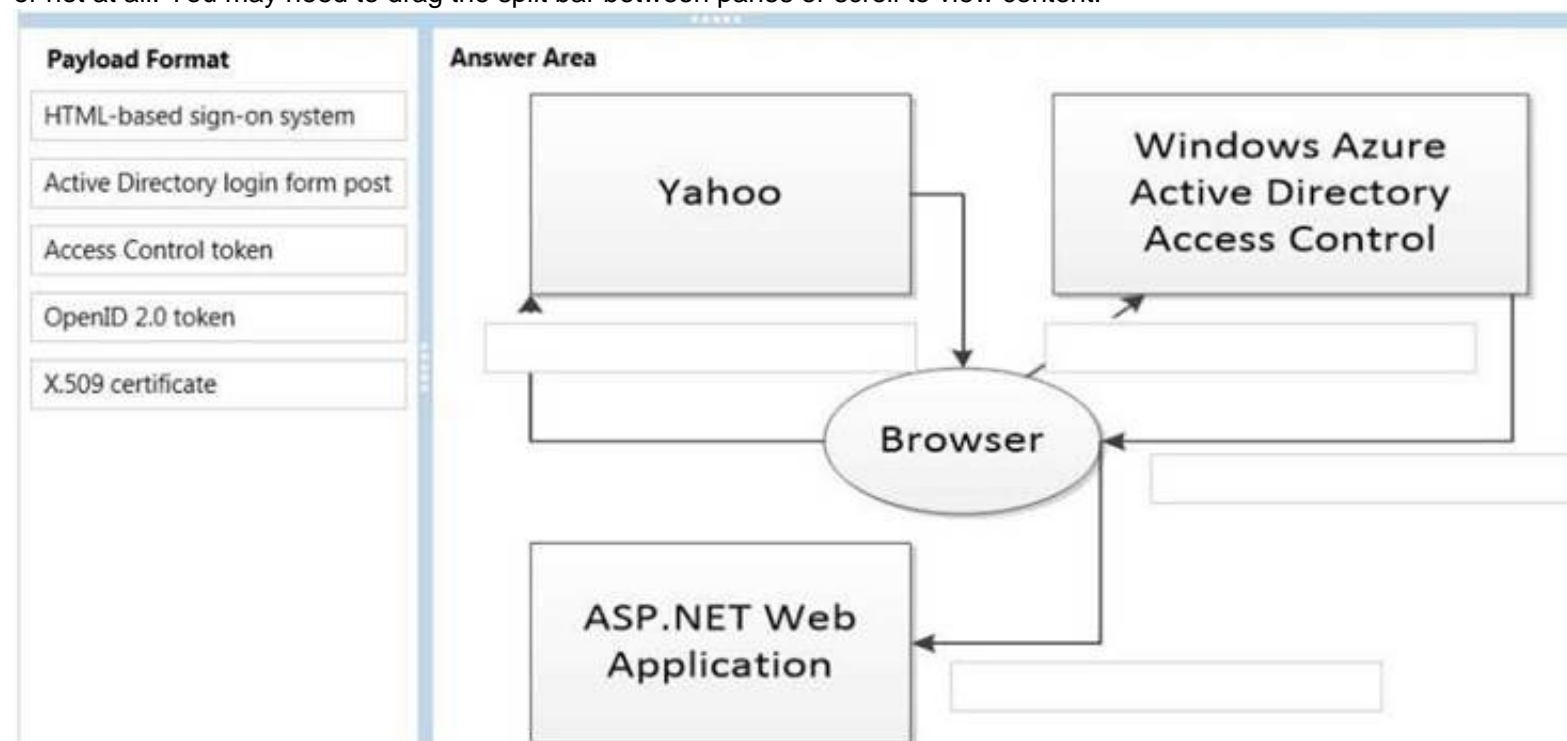
NEW QUESTION 162

DRAG DROP

You are converting an existing ASP.NET web application to use the Azure Active Directory (AD) Access Control service for authentication. The application will authenticate users by using their Yahoo account credentials.

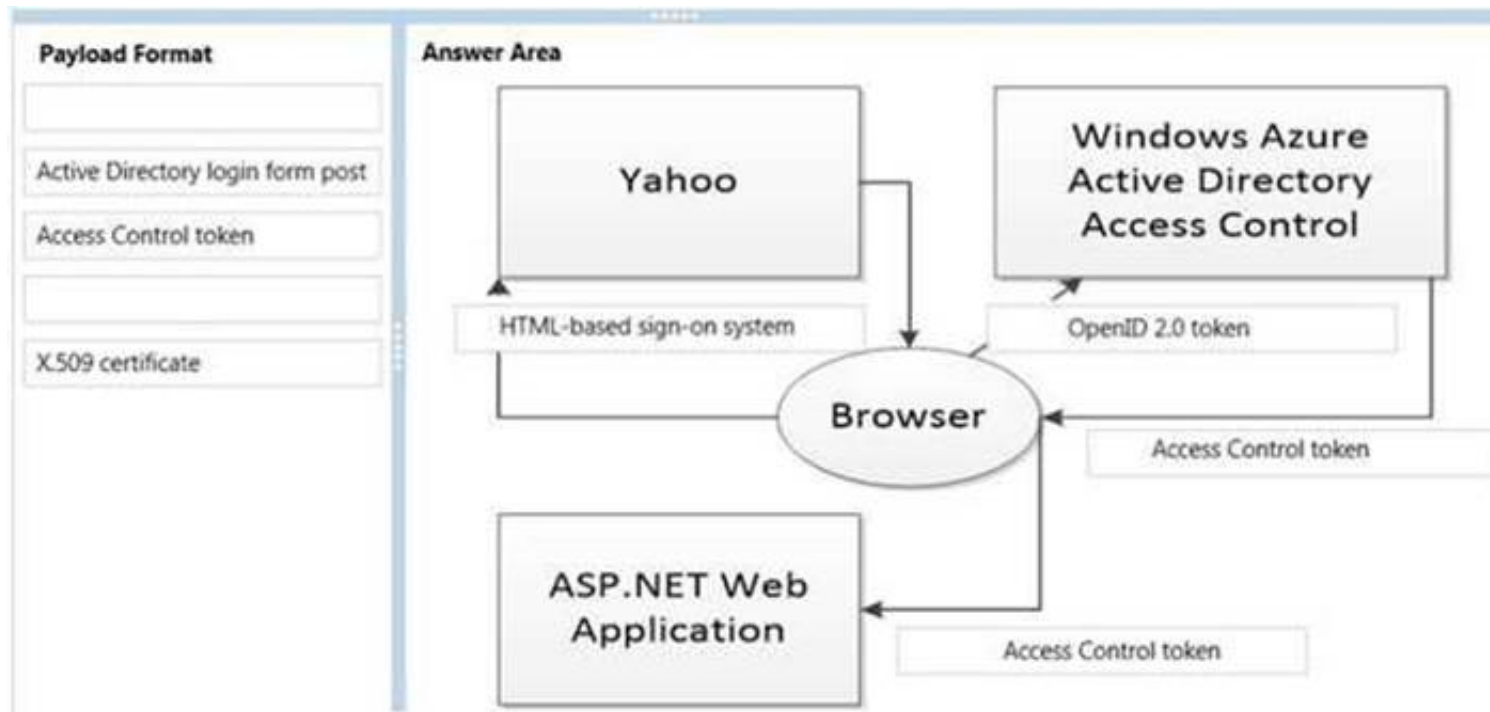
You need to determine the correct payload for each stage of the authentication process.

What should you do? To answer, drag the appropriate payload to the correct location on the dialog box. Each payload format may be used once, more than once, or not at all. You may need to drag the split bar between panes or scroll to view content.



Answer:

Explanation:



NEW QUESTION 167

DRAG DROP

You create a web application. You publish the source code of the web application to a GitHub repository by using Microsoft Visual Studio. You create a website by using the Azure management portal.

You must continuously deploy the web application from the GitHub repository website to the Azure website.

You need to deploy the source code of the web application.

Which four actions should you perform in sequence? To answer, move the appropriate actions from the list of actions to the answer area and arrange them in the correct order.

Actions	Answer Area
Select the repository and the branch from which to deploy the Azure website.	
Select GitHub as the source control method.	
Configure the Azure website to use the Always On option.	
In the Azure management portal, configure web endpoint monitoring.	
In the Azure management portal, choose the option to set up deployment from source control.	
Sign in to GitHub by using your deployment credentials.	

Answer:

Explanation:

Actions	Answer Area
Select the repository and the branch from which to deploy the Azure website.	In the Azure management portal, choose the option to set up deployment from source control.
Select GitHub as the source control method.	Select GitHub as the source control method.
Configure the Azure website to use the Always On option.	Sign in to GitHub by using your deployment credentials.
In the Azure management portal, configure web endpoint monitoring.	Select the repository and the branch from which to deploy the Azure website.
In the Azure management portal, choose the option to set up deployment from source control.	
Sign in to GitHub by using your deployment credentials.	

NEW QUESTION 171

A company creates an API and makes it accessible on an Azure website. External partners use the API occasionally. The website uses the Standard web hosting plan.

Partners report that the first API call in a sequence of API calls occasionally takes longer than expected to run. Subsequent API calls consistently perform as expected.

You need to ensure that API calls perform consistently. What should you do?

- A. Configure the website to use the Basic web hosting plan.
- B. Enable Always On support.
- C. Configure the website to automatically scale.
- D. Add a trigger to the web.config file for the website that causes the website to recycle periodically.

Answer: B

NEW QUESTION 172

HOTSPOT

You have a cloud service that runs an external process that is named MyStartupTask.cmd. The cloud service runs this external process when the web role starts. The external process writes information to the Windows registry. You set the value of an environment variable named MyID to the deployment ID for the current web role instance.

The external process must complete writing the information to the Windows registry before the web role starts to accept web traffic.

You need to configure the cloud service.

How should you complete the relevant markup? To answer, select the appropriate option or options in the answer

Answer Area

```
<Startup>
  <Task commandLine="MyStartupTask.cmd"
    executionContext="elevated" taskType="simple"
    executionContext="limited" taskType="foreground"
    executionContext="elevated" taskType="foreground"
    executionContext="elevated" taskType="background"

  <Environment>
    <Variable name="MyId">
      <RoleInstanceValue xpath="/RoleEnvironment/Deployment/@id"/>
      <RoleInstanceValue xpath="/DeploymentId"/>
      <RoleEnvironment.DeploymentId </Value>
      <Value>@DeploymentId</Value>

    </Variable>
  </Environment>
</Task>
</Startup>
```

Answer:

Explanation:

Answer Area

```
<Startup>
  <Task commandLine="MyStartupTask.cmd"
    executionContext="elevated" taskType="simple"
    executionContext="limited" taskType="foreground"
    executionContext="elevated" taskType="foreground"
    executionContext="elevated" taskType="background"
  >
</Task>
</Startup>

<Environment>
  <Variable name="MyId">
    <RoleInstanceValue xpath="/RoleEnvironment/Deployment/@id"/>
    <RoleInstanceValue xpath="/DeploymentId"/>
    <RoleEnvironment.DeploymentId </Value>
    <Value>@DeploymentId</Value>
  </Variable>
</Environment>
</Startup>
```

NEW QUESTION 174

DRAG DROP

Your team uses a proprietary source control product. You use FTP to manually deploy an Azure Web App.

You must move your source code from the proprietary source control product to a secure on-premises Git versioning system. Instead of deploying the website by using FTP, the website must automatically deploy to Azure each time developers check-in source files.

You need to implement the new deployment strategy.

Which three actions should you perform in sequence? answer, move the appropriate actions from the list of actions to the answer area and arrange them in the correct order.

Actions

- In the Azure management portal, configure Web Apps to support deployment from the local Git repository.
- Commit the website to the Git repository.
- In the Azure portal, configure Web App to support deployment from Microsoft Visual Studio Team Services.
- In the Azure portal, configure Web App to support deployment from external repository sources.
- Create a local Git repository.

Answer Area



Answer:

Explanation: References:

<https://docs.microsoft.com/en-us/aspnet/core/publishing/azure-continuous-deployment>

NEW QUESTION 177

HOTSPOT

You are developing an Azure cloud service for a company. The cloud service monitors a queue for incoming messages and then processes invoices based on the contents of these messages.

Some messages are formed incorrectly and cause exceptions. There no time limit for how long the service takes to process an individual message.

All messages must be processed at least once by using the ProcessMessage method. Messages must not be processed more than twice by using the ProcessMessage method. Messages that fail normal processing must be processed by using the ProcessPoisonMessage method.

You need to configure message processing.

How should you complete the relevant code? To answer, select the appropriate option or options in the answer area.

Answer Area

```
private bool ProcessNextQueueMessage(CloudQueue cloudQueue)
{
    var msg = cloudQueue.GetMessage();

    if (msg == null) return false;
    if (msg.DequeueCount > 0) return false;
    if (msg.PopReceipt == null) return false;
    if (msg.ExpirationTime.HasValue) return false;

    if (msg == null)
    if (msg.DequeueCount > 0)
    if (msg.DequeueCount > 2)
    if (msg.PopReceipt == null)

    ProcessPoisonMessage(msg);
else
    ProcessMessage(msg);

    cloudQueue.Delete();
    cloudQueue.DeleteMessage(msg);
    cloudQueue.EndAddMessage(null);
    cloudQueue.DeleteMessage(null);

    return true;
}
```

Answer:

Explanation: **Answer Area**

```
private bool ProcessNextQueueMessage(CloudQueue cloudQueue)
{
    var msg = cloudQueue.GetMessage();

    if (msg == null) return false;
    if (msg.DequeueCount > 0) return false;
    if (msg.PopReceipt == null) return false;
    if (msg.ExpirationTime.HasValue) return false;

    if (msg == null)
    if (msg.DequeueCount > 0)
    if (msg.DequeueCount > 2)
    if (msg.PopReceipt == null)

    ProcessPoisonMessage(msg);
else
    ProcessMessage(msg);

    cloudQueue.Delete();
    cloudQueue.DeleteMessage(msg);
    cloudQueue.EndAddMessage(null);
    cloudQueue.DeleteMessage(null);

    return true;
}
```

NEW QUESTION 181

Which of the following applications would be a good candidate to move to a cloud- based platform?

A. Mission critical financial data

- B. Customer Relationship Management (CRM)
- C. High-performance computing
- D. Database that requires a low latency for indexing

Answer: B

Explanation: The best place to start is with new applications that are customer-, partner- and employee- facing.

Cloud CRM (or CRM cloud) means any customer relationship management (CRM) technology where the CRM software, CRM tools and the organization's customer data resides in the cloud and is delivered to end-users via the Internet.

Cloud CRM typically offers access to the application via Web-based tools (or browser)

logins where the CRM system administrator has previously defined access levels across the organization. Employees can log in to the CRM system, simultaneously, from any Internet- enabled computer or device. Often, cloud CRM provide users with mobile apps to make it easier to use the CRM on smartphones and tablets.

References:

<https://azure.microsoft.com/en-us/blog/a-key-it-decision-which-apps-to-move-to-the-cloud/> http://www.webopedia.com/TERM/C/crm_cloud.html

NEW QUESTION 184

A private cloud is defined as:

- A. A model that uses an external cloud to provide host application services that are Internet accessible.
- B. A deployment model that partners with other industry related companies to provide infrastructure services.
- C. A deployment model that uses virtualization technologies to provide infrastructure on demand within its network.
- D. A deployment model that uses an external cloud provider to provide host infrastructure services that are Internet accessible.

Answer: C

Explanation: Private cloud is a type of cloud computing that delivers similar advantages to public cloud,

including scalability and self-service, but through a proprietary architecture. Unlike public clouds, which deliver services to multiple organizations, a private cloud is dedicated to a single organization.

Private cloud expenses include virtualization, cloud software and cloud management tools. References:

<http://searchcloudcomputing.techtarget.com/definition/private-cloud>

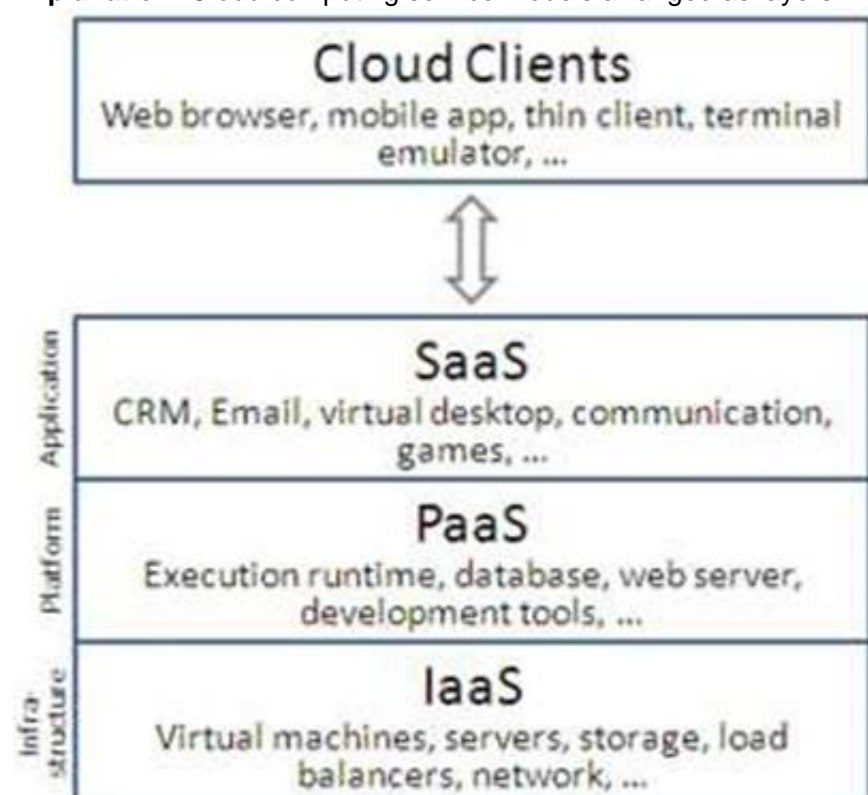
NEW QUESTION 187

Which of the following is the logical progression in internal private cloud adoption?

- A. Virtualize, PaaS, IaaS and SaaS
- B. SaaS, PaaS, IaaS and Virtualize
- C. Virtualize, IaaS, PaaS and SaaS
- D. IaaS, PaaS, Virtualize and SaaS

Answer: C

Explanation: Cloud computing service models arranged as layers in a stack.



References: https://en.wikipedia.org/wiki/Cloud_computing#Service_models

NEW QUESTION 189

A cloud computing vendor is focusing on delivering applications to customers. The goal is to simplify the deployment of database functionality while removing the need for customers to manage the operation system and application patching. Which of the following types of solution is the vendor offering?

- A. IT as a Service
- B. Infrastructure as a Service
- C. Anything as a Service
- D. Platform as a Service

E. Software as a Service

Answer: D

Explanation: PaaS includes infrastructure—servers, storage, and networking—but also middleware, development tools, business intelligence (BI) services, database management systems, and more.

Note:



References: <https://azure.microsoft.com/en-us/overview/what-is-paas/>

NEW QUESTION 190

Which of the following describes what is meant by the ITIL Service Strategy component?

- A. Defining processes required to manage the solution.
- B. Designing the solution to the ITIL specifications.
- C. Ensuring changes are designed to meet customer expectations.
- D. Understanding the intended customer and what services are required.

Answer: D

Explanation: The objective of ITIL Service Strategy is to decide on a strategy to serve customers. Starting from an assessment of customer needs and the market place, the Service Strategy lifecycle stage determines which services the IT organization is to offer and what capabilities need to be developed. Its ultimate goal is to make the IT organization think and act in a strategic manner.

References: http://wiki.en.it-processmaps.com/index.php/ITIL_Service_Strategy

NEW QUESTION 195

Which of the following are the MOST important benefits of a cloud computing solution for an application development provider? (Select two.)

- A. Reduced training time for new developers
- B. Reduced storage requirements.
- C. Reduced complexity for users.
- D. Reduced bandwidth usage.
- E. Reduced cost.
- F. Reduced development timeframe.

Answer: EF

Explanation: The biggest promise of Azure-based applications is the ability to write them to scale as needed in real-time. Customers will therefore only use the amount of resources they need, rather than budgeting a set amount of resources that can overtax or underutilize their current setup.

References: <http://searchcloudcomputing.techtarget.com/tutorial/An-introduction-to-developing-for-Microsoft-Azure>

NEW QUESTION 198

As part of a cloud provider's services, customers can provision a new virtual machine as needed without human interaction with the provider. The scenario is BEST described by which of the following cloud characteristics?

- A. On-demand self-service
- B. Measured service
- C. Broad network access
- D. Rapid elasticity

Answer: A

Explanation: On-demand self service refers to the service provided by cloud computing vendors that enables the provision of cloud resources on demand whenever they are required. In on- demand self service, the user accesses cloud services through an online control panel. On-demand self service resource sourcing is a prime feature of most cloud offerings where the user can scale the required infrastructure up to a substantial level without disrupting the host operations.

References: <https://www.techopedia.com/definition/27915/on-demand-self-service>

NEW QUESTION 201

A business has recently implemented a hybrid cloud federated solution, which will allow it to rapidly and dynamically allocate resources during high demand, and quickly implement its Disaster Recovery Plan (DRP) and Continuity of Operations (COOP). Given this implementation, the IT director is mostly likely concerned about:

- A. maintaining strategic flexibility
- B. reducing OPEX allocations
- C. hiring additional IT staff
- D. eliminating security risks

Answer: D

Explanation: Initially, the differences between Disaster Recover and Business Continuity should be understood. In comparison they are very similar in that they are (or should be) detailed plans to prepare an organization for events in which a situation presents itself which can cause internal systems failures, or a disruption of business systems in which they are no longer able to function to meet the requirements to perform day to day tasks. These situations almost always result in loss of revenue, and in some cases, loss of client base. Where these plans differ is in the main concept topic for which they prepare. Business Continuity Plans generally focus on the continuation of business services in the event of any type of interruptions whether its IT based or other. Disaster Recover Plans often refer to a company's strategy if something happens to crucial business data, and how to restore / recover that data in the shortest amount of time possible).

References: <https://stumpj.wordpress.com/2010/10/18/coop-and-drp-what-is-the-difference/>

NEW QUESTION 203

Which of the following enables hardware independence?

- A. In-sourcing
- B. Outsourcing
- C. Virtualization
- D. Abstraction

Answer: C

Explanation: Virtualization is a conversion process that translates unique IT hardware into emulated and standardized software-based copies. Through hardware independence, virtual servers can easily be moved to another virtualization host, automatically resolving multiple hardware- software incompatibility issues. As a result, cloning and manipulating virtual IT resources is much easier than duplicating physical hardware.

References: http://whatiscloud.com/virtualization_technology/hardware_independence

NEW QUESTION 208

When using SaaS, the cloud computing vendor is responsible to maintain which of the following?

- A. Client infrastructure
- B. Client firewall
- C. Updates and licenses.
- D. Workstation OS version.

Answer: C

NEW QUESTION 210

Which of the following is the MOST significant risk to business continuity when using an external cloud service provider?

- A. Unauthorized access to customer data
- B. Vendor being purchasedC, Virtual server failure
- C. Vendor going out of business

Answer: A

Explanation: If your application stores and retrieves very sensitive data, you might not be able to maintain it in the cloud. Similarly, compliance requirements could also limit your choices.

References: <http://cloudacademy.com/blog/cloud-migration-benefits-risks/>

NEW QUESTION 213

A cloud usage metering scheme allows for which of the following customer chargeback alternatives?

- A. Cost allocation
- B. Cost amortization
- C. Shared cost
- D. Direct cost

Answer: D

Explanation: CHARGEBACK METHODS

A range of approaches have been developed for implementing chargeback in an organization, as summarized in the figure below. The degree of complexity, degree of difficulty, and cost to implement decreases from the top of the chart [service-based pricing (SBP)], to the bottom [high-level allocation (HLA)]. HLA is the simplest method; it uses a straight division of IT costs based on a generic metric such as headcount. Slightly more effort to implement is low-level allocation (LLA), which bases consumer costs on something more related to IT activity such as the number of users or servers. Direct cost (DC) more closely resembles a time and materials charge but is

often tied to headcount as well.
 Figure, Methods for chargeback allocation.

METHOD	DESCRIPTION
Service Based Pricing (SBP)	Charges per a specific measured unit of service
Negotiated Flat Rate (NFR)	Charges based on a negotiated and often projected usage of a service
Tiered Flat Rate (TFR)	Charges based on providing access to a service whether the service is being used or not (fliers or bands pricing)
Measured Resource Usage (MRU)	Charges based on actual measured usage of specific IT resources (e.g., kW consumed, network bandwidth consumed, and storage consumed)
Direct Cost (DC)	Charges based on dedicated ownership of the resource (e.g., time and material based costing)
Low-level Allocation (LLA)	Charges based on simpler user metrics (e.g., user counts and server counts)
High-level Allocation (HLA)	Charges based on user size (e.g., number of employees and amount of revenue)

References: <https://journal.uptimeinstitute.com/it-chargeback-drives-efficiency/>

NEW QUESTION 215

Virtual Desktop Interface (VDI) will present challenges for the network administrator as they move their users to the cloud. Which of the following would be considered a major challenge?

- A. Developing a backup environment for the end user
- B. Troubleshooting the users' applications
- C. Supporting multiple devices (e. tablets, thin clients)
- D. Centralizing the applications

Answer: C

Explanation: References: <https://msdn.microsoft.com/en-us/library/dn903170.aspx>

NEW QUESTION 219

An application development company is considering implementing a cloud solution to help improve time to market with new software upgrades. The existing application has been in use by customers for several years and contains a large amount of code. Which of the following types of clouds would be BEST for this company to implement?

- A. IaaS
- B. XaaS
- C. PaaS
- D. SaaS

Answer: C

Explanation: Platform as a service (PaaS) is a complete development and deployment environment in the cloud, with resources that enable you to deliver everything from simple cloud-based apps to sophisticated, cloud-enabled enterprise applications. You purchase the resources you need from a cloud service provider on a pay-as-you-go basis and access them over a secure Internet connection.

Like IaaS, PaaS includes infrastructure—servers, storage, and networking—but also middleware, development tools, business intelligence (BI) services, database management systems, and more. PaaS is designed to support the complete web application lifecycle: building, testing, deploying, managing, and updating. PaaS allows you to avoid the expense and complexity of buying and managing software licenses, the underlying application infrastructure and middleware or the development tools and other resources. You manage the applications and services you develop, and the cloud service provider typically manages everything else. References: <https://azure.microsoft.com/en-us/overview/what-is-paas/>

NEW QUESTION 221

One of the strategic reasons to source component technology purchases from multiple providers is to:

- A. Avoid vendor lock-in.
- B. Influence governmental organizations.
- C. Keep vendor prices down.
- D. Encourage vendor control.

Answer: A

Explanation: When it comes to building applications for the cloud, John Gossman, an employee of Microsoft, thinks agility and portability are essential. "You don't

want to get locked in too much to a particular vendor, strategy, technology, whatever," he says.
Likewise, he added, you aren't likely to last long if your plan is to pick a single public cloud vendor and host everything there.
References: http://www.theregister.co.uk/2014/12/06/microsoft_linux_and_the_cloud/

NEW QUESTION 225

A graphic design company regularly runs out of storage space on its file servers due to the large size of its customer artwork files. The company is considering migrating to cloud computing to solve this problem. Which of the following characteristics of cloud computing is the MOST beneficial reason the company should implement a cloud solution?

- A. Scalability
- B. Security
- C. Variable costs
- D. Hardware independence

Answer: A

NEW QUESTION 226

Which of the following will allow an organization to integrate internal identity management services with a cloud provider in order to provide single sign on across the internal and cloud-hosted environments?

- A. Virtualization
- B. Federation
- C. Role-based authentication
- D. Outsourcing

Answer: B

Explanation: Azure AD supports three different ways to sign in to applications:

References: <https://azure.microsoft.com/en-us/documentation/articles/active-directory-appssoaccess-what-is/>

NEW QUESTION 227

Locating datacenters close to target markets is the result of which of the following strategic initiatives?

- A. Geoproximity
- B. Geodiversity
- C. Geography
- D. Localization

Answer: A

Explanation: Azure allows specification of geographical regions or affinity groups. Geographical regions are related to the data centers, like North Central US, South Central US, Anywhere US, East Asia, North Europe, and so on. The list of options will grow as more data centers are added. Instead of selecting a region, it is possible to specify an affinity group. Affinity groups are hints to Azure that essentially state that everything within the group should be as close in proximity as Azure will allow. That usually means keeping items within the same data center, which besides having the benefit of geo-location, can sometimes offer performance improvements for communication.

References: <http://gregleventhagen.com/azure-geographical-location-restriction/>

NEW QUESTION 231

A company regularly doubles the number of employees over the summer by hiring on temporary stuff. The company currently pays the same price every month for its email software, equal to the maximum number of employees on staff who have email addresses. The company would like to only pay for the number of active email addresses and is considering migrating to a cloud solution. Which of the following characteristics of cloud computing is the MOST beneficial reason the company should implement a cloud solution?

- A. Scalability
- B. Hardware independence
- C. Variable costs
- D. Security

Answer: C

NEW QUESTION 235

Which of the following is a benefit of public cloud computing?

- A. Enhances fixed expenditures for hardware and software
- B. Contributes to the quality of user input data
- C. Reduces OPEX costs for application and databases
- D. Adds flexibility and agility to enterprise architecture

Answer: D

Explanation: Public cloud computing offers greater flexibility, agility, and scalability.

NEW QUESTION 239

An existing capability is being migrated into the cloud. Capacity management issues have been noticed in the past and an exercise is being performed to calculate current and future volumes. In which of the following lifecycle phases is this likely to be performed?

- A. Operation
- B. Design
- C. Transition
- D. Strategy

Answer: C

NEW QUESTION 240

An entrepreneur has decided to open an e-commerce site to complement their retail store. After researching their options, they decide that a PaaS solution will be sufficient. To reduce upfront cost, the entrepreneur intends to build the site themselves. Which of the following skill-tests will be needed?

- A. Firewall Administration
- B. Web-Server Administration
- C. Security standard development
- D. Application development

Answer: D

Explanation: Platform as a service (PaaS) is a complete development and deployment environment in the cloud, with resources that enable you to deliver everything from simple cloud-based apps to sophisticated, cloud-enabled enterprise applications.

PaaS allows you to avoid the expense and complexity of buying and managing software licenses, the underlying application infrastructure and middleware or the development tools and other resources. You manage the applications and services you develop, and the cloud service provider typically manages everything else.

References: <https://azure.microsoft.com/en-us/overview/what-is-paas/>

NEW QUESTION 244

An organization is planning to host a number of its critical applications in the cloud. Which of the following is the Best way to gain a broad assurance of the cloud provider's security posture?

- A. A review that includes interviewing key security stakeholders and identifying the key controls that they operate.
- B. A review that includes security policies, evidence of the controls, physical site assessments and vulnerability scanning.
- C. A review that includes the right to audit on a yearly basis and review of the security clauses in the contract.
- D. A review that includes security applications, external audits, intrusion detection and firewall policy reviews.

Answer: B

NEW QUESTION 246

One major impact that cloud computing has had on the application development process is the need for greater:

- A. security
- B. speed
- C. isolation
- D. standardization

Answer: A

NEW QUESTION 247

Which of the following should be measured with a direct cost chargeback method?

- A. Power and cooling consumed
- B. CPU cycles used
- C. Technical staff
- D. Square footage cost of the facility

Answer: A

Explanation: CHARGEBACK METHODS

A range of approaches have been developed for implementing chargeback in an organization, as summarized in the figure below. The degree of complexity, degree of difficulty, and cost

to implement decreases from the top of the chart [service-based pricing (SBP)], to the bottom [high-level allocation (HLA)]. HLA is the simplest method; it uses a straight division of IT costs based on a generic metric such as headcount. Slightly more effort to implement is low-level allocation (LLA), which bases consumer costs on something more related to IT activity such as the number of users or servers. Direct cost (DC) more closely resembles a time and materials charge but is often tied to headcount as well.

References: <https://journal.uptimeinstitute.com/it-chargeback-drives-efficiency/>

NEW QUESTION 252

An organization is moving web server clusters to a public IaaS cloud while keeping database servers in the company owned datacenter. The organization will continue utilizing the internal service desk to manage the application. Which of the following ITIL processes will plan the move?

- A. Release Management
- B. Incident Management
- C. Problem Management
- D. Change Management

Answer: D

Explanation: Change Management is an IT service management discipline. The objective of change management in this context is to ensure that standardized methods and procedures are used for efficient and prompt handling of all changes to control IT infrastructure, in order to minimize the number and impact of any related incidents upon service.

References: [https://en.wikipedia.org/wiki/Change_management_\(ITSM\)](https://en.wikipedia.org/wiki/Change_management_(ITSM))

NEW QUESTION 257

Note: question is part of a series of questions that present the same scenario. Each question in the series contains a unique solution that might meet the stated goals. Some question sets might have more than one correct solution, while others might not have a correct solution.

After you answer a question in this section, you will NOT be able to return to it. As a result, these questions will not appear in the review screen.

You are administering an Azure environment for your company. You plan to deploy virtual machines (VMs) for a mobile application. You have the following requirements:

- * Ensure that all VMs use the Standard D3 size.

- * Ensure that at least two of the four servers must be available at all times.

- * Ensure that users of the application do not experience downtime or loss of connection. You need to configure four VMs for application development.

Solution: Create a Virtual Machine Scale Set (VMSS) that has an instance count of 4. Does the solution meet the goal?

A. Yes

B. No

Answer: B

NEW QUESTION 261

Note: This question is part of a series of questions that present the same scenario. Each question in the series contains a unique solution that might meet the stated goals. Some question sets might have more than one correct solution, while others might not have a correct solution.

After you answer a question in this section, you will NOT be able to return to it. As a result, these questions will not appear in the review screen.

You are administering an Azure environment for your company. You plan to deploy virtual machines (VMs) for a mobile application. You have following requirements:

- * Ensure that all VMs use the Standard D3 size.

- * Ensure that at least two of the four servers must be available at all times.

- * Ensure that users of the application do not experience downtime or loss of connection. You need to configure four VMs for application development.

Solution: You create an availability set that has two fault domains and two update domains by using the Azure portal. You create four virtual machines and assign the new availability set to each VM.

Does the solution meet the goal?

Yes

A. No

Answer: A

NEW QUESTION 262

Note: This question is part of a series of questions that present the same scenario. Each question in the series contains a unique solution that might meet the stated goals. Some question sets might have more than one correct solution, while others might not have a correct solution.

After you answer a question in this section, you will NOT be able to return to it. As a result, these questions will not appear in the review screen.

You are administering an Azure environment for your company. You plan to deploy virtual machines (VMs) for a mobile application. You have the following requirements:

- * Ensure that all VMs use the Standard D3 size.

- * Ensure that at least two of the four servers must be available at all times.

- * Ensure that users of the application do not experience downtime or loss of connection. You need to configure four VMs for application development.

Solution: Create two resource groups by using the Azure portal. Create four VMs. Assign two VMs to the first resource group and two to the second resource group.

Does the solution meet the goal?

A. Yes

B. No

Answer: A

NEW QUESTION 263

DRAG DROP

You are developer working on a project that will be deployed to Azure. The project includes a local SQL Server database.

You need to migrate the database to Azure SQL.

How should you complete the code segment? To answer, drag the appropriate code segment to the correct location or locations. Each code segment may be used once, more than once, or not at all. You may need to drag the split bar between panes or scroll to view content.

Code segment	Answer Area
sqlpackage.exe	
dtexec.exe	/a:Export /ssn:devsql /sdn:proddb /tf:C:\Temp\
Start-AzureSqlDatabaseImport	
Start-AzureSqlDatabaseRestore	azure storage blob upload C:\Temp\db.bacpac db db.bacpac \$ctx = New-AzureSqlDatabaseServerContext -ServerName \$ServerName -Credential \$credential
db.bacpac	
db.mdf	-SqlConnectionContext \$ctx -StorageContainer db -DatabaseName proddb -BlobName

Answer:

Explanation:

Code segment	Answer Area
sqlpackage.exe	sqlpackage.exe
dtexec.exe	/a:Export /ssn:devsql /sdn:proddb /tf:C:\Temp\
Start-AzureSqlDatabaseImport	db.bacpac
Start-AzureSqlDatabaseRestore	azure storage blob upload C:\Temp\db.bacpac db db.bacpac \$ctx = New-AzureSqlDatabaseServerContext -ServerName \$ServerName -Credential \$credential
db.bacpac	Start-AzureSqlDatabaseImport
db.mdf	-SqlConnectionContext \$ctx -StorageContainer db -DatabaseName proddb -BlobName db.bacpac

NEW QUESTION 265

Which of the following are valid options for processing queue messages? (Choose Two.)

- A. A single compute instance can process only one message at a time.
- B. A single compute instance can process up to 31 messages at a time.
- C. A single compute instance can retrieve up to 32 messages at a time.
- D. Messages can be read one at a time or in batches of up to 32 messages at a time.
- E. Messages are deleted as soon as they are read.

Answer: CD

NEW QUESTION 268

Which statement is true of Storage Analytics Metrics?

- A. Capacity metrics are recorded only for blobs.
- B. You can set hourly or by minute metrics through the management portal.
- C. By default, metrics are retained for one year.
- D. If you disable metrics, existing metrics are deleted from storage.

Answer: A

NEW QUESTION 270

Which statements are true of Storage Analytics Logging? (Choose Two.)

- A. Logs are stored in the same storage account where they are enabled and are measured as part of your storage quota.
- B. Logs can have duplicate entries.

- C. Logs cannot be deleted.
- D. You can all read, write, and delete requests to blobs, queues, and tables in a storage account.

Answer: BD

NEW QUESTION 271

Which metrics should you add to monitoring that will help you select the appropriate level of SQL Database? (Choose three)

- A. CPU Processor Count
- B. CPU Percentage
- C. Physical Data Reads Percentage
- D. Log Writes Percentage

Answer: BCD

NEW QUESTION 273

DRAG DROP

Your company has a main office and several offices. You create an Azure subscription and you deploy several virtual machines. The virtual machines are located in multiple subnets. You need to provide remote access to the virtual machines to five users in each office by using a VPN connection. The remote access connections will not require a VPN device nor a public-facing IP address in order to work. Which three actions should you perform in sequence before you download the VPN client on each computer? To answer, move the appropriate actions from the list of actions to the answer area and arrange them in the correct order.

Actions

Create a site-to-site VPN.

Generate a self-signed root certificate and upload the certificate to Azure.

Create a point-to-site VPN.

Generate a self-signed computer certificate for each client computer and install the respective certificate on each client computer.

Deploy a VPN appliance to each office and download a configuration script for each appliance.

Generate a self-segned root certificate and install the certificate on each client computer.

Answer Area

⏪

⏩

⏴

⏵

Answer:

Explanation:

Passing Certification Exams Made Easy

visit - <https://www.surepassexam.com>

Actions

- Create a site-to-site VPN.
- Generate a self-signed root certificate and upload the certificate to Azure.
- Create a point-to-site VPN.
- Generate a self-signed computer certificate for each client computer and install the respective certificate on each client computer.
- Deploy a VPN appliance to each office and download a configuration script for each appliance.
- Generate a self-segned root certificate and install the certificate on each client computer.

Answer Area

- Generate a self-signed root certificate and upload the certificate to Azure.
- Generate a self-signed computer certificate for each client computer and install the respective certificate on each client computer.
- Create a point-to-site VPN.

NEW QUESTION 276

You have an Azure subscription.

You create an Azure Active Directory (Azure AD) tenant named Tenant1. You plan to integrate Tenant1 and the on-premises Active Directory.

You need to create a user account that can be used to synchronize changes from the on-

premises Active Directory. The solution must use the principle of least privilege. Which organizational role should you assign to the user account?

- A. Service administrator
- B. Global administrator
- C. Password administrator
- D. User administrator

Answer: B

NEW QUESTION 279

You manage an on-premises monitoring platform. You plan to deploy virtual machines (VMs) in Azure.

You must use existing on-premises monitoring solutions for Azure VMs. You must maximize security for any communication between Azure and the on-premises environment.

You need to ensure that Azure alerts are sent to the on-premises solution. What should you do?

- A. Enable App Service Authentication for the VMs.
- B. Configure a basic authorization webhook.
- C. Deploy an HDInsight cluster.
- D. Configure a token-based authorization webhook.

Answer: D

NEW QUESTION 284

You administer an Azure subscription for your company.

You have an application that updates text files frequently. The text files will not exceed 20 gigabytes (GB) in size. Each write operation must not exceed 4 megabytes (MB).

You need to allocate storage in Azure for the application.

Which three storage types will achieve the goal? Each correct answer presents a complete solution.

- A. page blob
- B. queue
- C. append blob
- D. block blob
- E. file share

Answer: ACD

NEW QUESTION 288

You have an existing classic virtual network.

You need to export the virtual network settings to an XML file to make modifications. Which Azure PowerShell cmdlet should you use?

- A. Get-AzureVNetSite

- B. Get-AzureVNetConnection
- C. Get-AzureVNetGateway
- D. Get-AzureVNetConfig

Answer: D

NEW QUESTION 292

You are migrating a local virtual machine (VM) to an Azure VM. You upload the virtual hard disk (VHD) file to Azure Blob storage as a Block Blob. You need to change the Block blob to a page blob. What should you do?

- A. Delete the Block Blob and re-upload the VHD as a page blob.
- B. Update the type of the blob programmatically by using the Azure Storage .NET SDK.
- C. Update the metadata of the current blob and set the Blob-Type key to Page.
- D. Create a new empty page blob and use the Azure Blob Copy Power Shell cmdlet to copy the current data to the new blob.

Answer: A

Explanation: * To copy the data files to Windows Azure Storage by using one of the following methods: AzCopy Tool, Put Blob (REST API) and Put Page (REST API), or Windows Azure Storage Client Library for .NET or a third-party storage explorer tool.

Important: When using this new enhancement, always make sure that you create a page blob not a block blob.

* Azure has two main files storage format: References:

<http://msdn.microsoft.com/en-us/library/dn466429.aspx>

NEW QUESTION 293

You publish an application named MyApp to Azure Active Directory (Azure AD). You grant access to the web APIs through OAuth 2.0. MyApp is generating numerous user consent prompts. You need to reduce the amount of user consent prompts. What should you do?

- A. Enable Multi-resource refresh tokens.
- B. Enable WS-federation access tokens.
- C. Configure the Open Web Interface for .NET.
- D. Configure SAML 2.0.

Answer: A

Explanation: When using the Authorization Code Grant Flow, you can configure the client to call multiple resources. Typically, this would require a call to the authorization endpoint for each target service. To avoid multiple calls and multiple user consent prompts, and reduce the number of refresh tokens the client needs to cache, Azure Active Directory (Azure AD) has implemented multi-resource refresh tokens. This feature allows you to use a single refresh token to request access tokens for multiple resources.

References: <https://msdn.microsoft.com/en-us/library/azure/dn645538.aspx>

NEW QUESTION 298

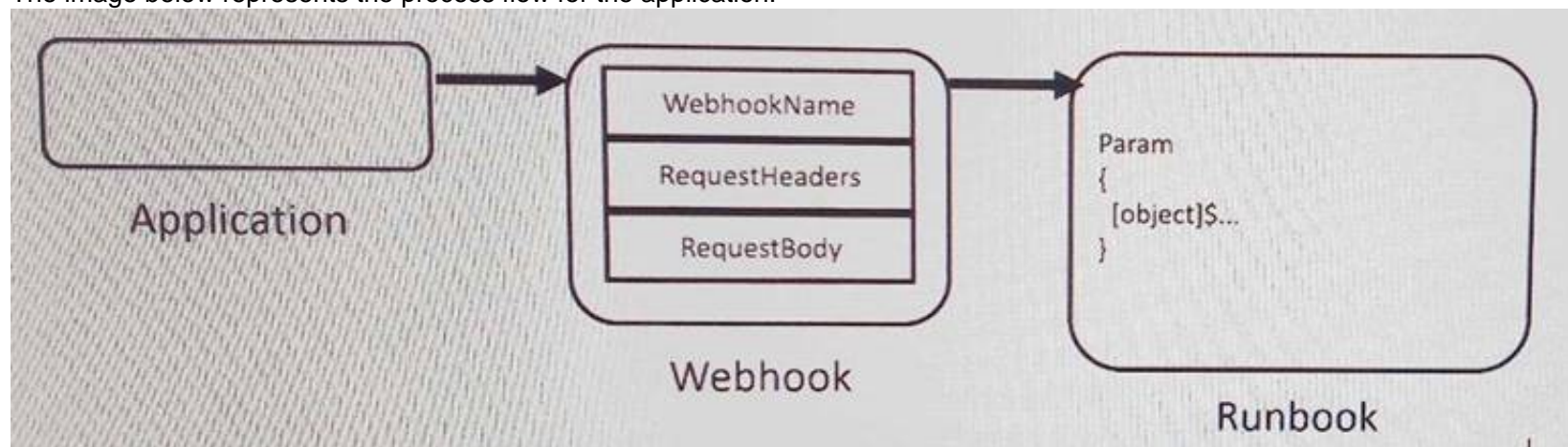
HOTSPOT

Note: This question is part of a series of questions that present the same scenario. Each question in the series contains a unique solution that might meet the stated goals. Some question sets might more than one correct solution, while others might not have a correct solution.

After you answer a question in this sections, you will NOT be able to return to it. As a result, these questions will not appear in the review screen.

You are developing an Azure application.

The image below represents the process flow for the application.



What should you use? To answer, select the appropriate options in the answer area. Each correct selection is worth one point.

Answer Area

Action

Solution

Trigger the webhook.

Azure Alert
HTTP GET
HTTP POST

Select the webhook object for passing data to the runbook.

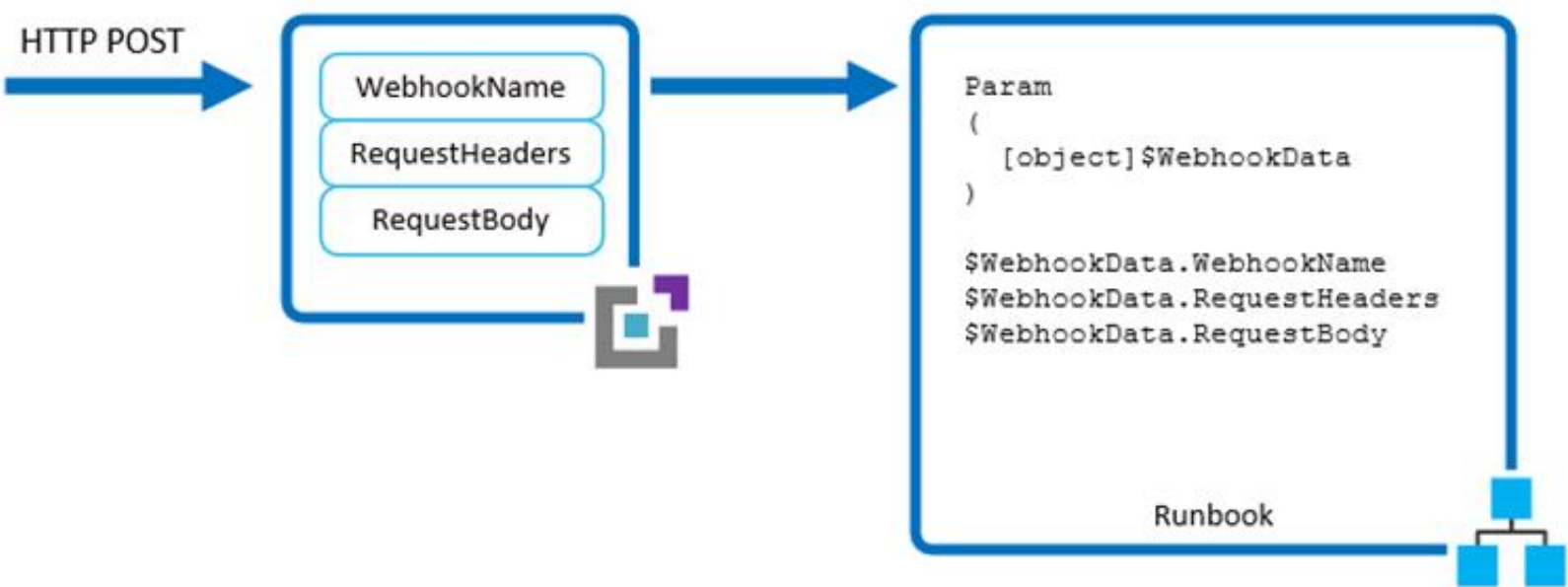
WebhookName
RequestHeaders
RequestBody

Select the object type to use as parameters in the runbook.

Webhook
Request
Webhook Data
Response

Answer:

Explanation: A webhook allows you to start a particular runbook in Azure Automation through a single HTTP request.



Box 1: HTTP Post

To use a webhook after it has been created, your client application must issue an HTTP POST with the URL for the webhook. Box 2: RequestHeaders

Box 3: WebhookData

When a client starts a runbook using a webhook, it cannot override the parameter values defined in the webhook. To receive data from the client, the runbook can accept a single parameter called \$WebhookData of type [object] that will contain data that the client includes in the POST request.

The \$WebhookData object will have the following properties:

References: <https://docs.microsoft.com/en-us/azure/automation/automation-webhooks>

NEW QUESTION 302

Note: This question is part of a series of questions that present the same scenario. Each question in the series contains a unique solution that might meet the stated goals. Some question sets might have more than one correct solution, while others might not have a correct solution.

After you answer a question in this sections, you will NOT be able to return to it. As a result, these questions will not appear in the review screen.

You administer an Azure environment that includes six Azure Resource Manager (ARM) virtual machines (VMs) that support development. The development team uses Azure SQL databases and Azure Queues for application storage. All Azure resources are grouped within a single subscription and resource group. You need to reduce the recurring monthly Azure costs without degrading server performance. You must minimize the administrative effort involved. What should you do?

- A. Configure an auto-shutdown schedule for each VM by using the Azure Portal.
- B. Update the development environment to use Azure Table storage.
- C. Create an Azure Automation runbook that compresses unused virtual hard disk (VHD) files daily.
- D. Create an Azure PowerShell script that backs up and deprovisions all Azure SQL databases daily.

Answer: A

Explanation: You can set any ARM-based Virtual Machines to auto-shutdown with a few simple clicks. This was a feature originally available only to VMs in Azure DevTest Labs: your self-service sandbox environment in Azure to quickly create Dev/Test environments while minimizing waste and controlling costs. In case you haven't heard it before, the goal for this service is to solve the problems that IT and development teams have been facing: delays in getting a working environment, time-consuming environment configuration, production fidelity issues, and high maintenance cost. It has been helping our customers to quickly get "ready to test" with a worry-free self-service environment.

References: <https://azure.microsoft.com/en-us/blog/announcing-auto-shutdown-for-vms- using-azure-resource-manager/>

NEW QUESTION 303

Note: This question is part of a series of questions that present the same scenario. Each question in the series contains a unique solution that might meet the stated goals. Some question sets might have more than one correct solution, while others might not have a correct solution.

After you answer a question in this sections, you will NOT be able to return to it. As a result, these questions will not appear in the review screen.

You develop an enterprise application that will be used only by the employees of a company. The application is not Internet-facing. You deploy instances of the application to Azure datacenters on two continents.

You must implement a load balancing that meets the following requirements:

? Provide network-level distribution of traffic across all instances of the application.

? Support HTTP and HTTPS protocols.

? Manage all inbound and outbound connections.

Any back-end virtual machine (VM) must be able to service requests from the same user or client session.

Solution: You implement Traffic Manager and Application Gateway. Does the solution meet the goal?

A. Yes

B. No

Answer: A

Explanation: Application Gateway works at the application layer (Layer 7 in the OSI network reference stack). It acts as a reverse-proxy service, terminating the client connection and forwarding requests to back-end endpoints. It supports the HTTP, HTTPS, and WebSockets protocols. Application Gateway is useful for applications that require requests from the same user/client session to reach the back-end virtual machine. Examples of these applications would be shopping cart applications and web mail servers.

Traffic Manager works at the DNS level. It uses DNS responses to direct end-user traffic to globally distributed endpoints. Clients then connect to those endpoints directly.

Microsoft Azure Traffic Manager allows you to control the distribution of user traffic for service endpoints in different datacenters

References: <https://docs.microsoft.com/en-us/azure/traffic-manager/traffic-manager-overview>

NEW QUESTION 305

Note: This question is part of a series of questions that present the same scenario. Each question in the series contains a unique solution that might meet the stated goals. Some question sets might have more than one correct solution, while others might not have a correct solution.

After you answer a question in this sections, you will NOT be able to return to it. As a result, these questions will not appear in the review screen.

You develop an enterprise application that will be used only by the employees of a company. The application is not Internet-facing. You deploy instances of the application to Azure datacenters on two continents.

You must implement a load balancing solution that meets the following requirements:

? Provide network-level distribution of traffic across all instances of the application.

? Support HTTP and HTTPS protocols.

? Manage all inbound and outbound connections.

Any back-end virtual machine (VM) must be able to service requests from the same user or client session.

Solution: You implement Traffic Manager.

Does the solution meet the goal?

A. Yes

B. No

Answer: B

Explanation: A Traffic Manager works at the DNS level. It uses DNS responses to direct end-user traffic to globally distributed endpoints. Clients then connect to those endpoints directly.

An application manager, which works at the Application level (Layer 7), is also required. References: <https://docs.microsoft.com/en-us/azure/application-gateway/application-gateway- introduction>

NEW QUESTION 310

You are developing an Azure-hosted application that processes request messages for multiple office locations. You create an Azure Service Bus topic named Requests. The topic has a maximum size of 5 gigabytes (GB) and a default message time to live (TTL) of 5 minutes. You also create subscriptions named PriorityRequest and StandardRequest and include appropriate logic to route the messages.

Users report that the application has not processed messages from PriorityRequest in several days.

You need to retrieve the number of messages the PriorityRequest subscription. Which metric Should you use?

- A. Subscription Length
- B. Subscription Incoming Requests
- C. Topic Incoming Messages
- D. Topic Size

Answer: D

NEW QUESTION 313

DRAG DROP

You are developing a business-to-business (B2B) solution by using an Azure Logic App. You plan to use the Enterprise Integration Pack to allow the exchange of the X12 industry standard message format within your Logic App workflow. You start by creating a new Azure Resource Manager (ARM) resource group and Azure App Service plan.

You need to create the B2B solution.

Which four actions should you perform in sequence? To answer, move the appropriate actions from the list of actions to the answer area and arrange them in the correct order.

Actions

Call the function from the Logic App by using an HTTP trigger.

Create an integration account and the Logic App in the Azure Portal.

Create the Azure Function app.

Add a new function in the Azure Function app.

Add partners, schemas, certificates, maps, and agreements.

In your Logic App, use the partners, schemas, certificates, maps, and agreements.

Link the Logic App to the integration account.

Answer area

Answer:

Explanation: Actions

Answer area

Call the function from the Logic App by using an HTTP trigger.

Create an integration account and the Logic App in the Azure Portal.

Create the Azure Function app.

Add a new function in the Azure Function app.

Add partners, schemas, certificates, maps, and agreements.

In your Logic App, use the partners, schemas, certificates, maps, and agreements.

Link the Logic App to the integration account.

Create an integration account and the Logic App in the Azure Portal.

Add partners, schemas, certificates, maps, and agreements.

Link the Logic App to the integration account.

In your Logic App, use the partners, schemas, certificates, maps, and agreements.

NEW QUESTION 317

HOTSPOT

You deploy an application that uses a secure data storage solution to Azure. You use Redis Cache and select the Premium tier. You have the following requirements:

? Create point-in-time snapshots of the dataset at specific intervals.

? Limit specific clients from using the cache.

? Use primary/replica cache pairs. You need to configure the environment.

Which feature should you implement for each requirement? To answer, select the appropriate

options in the answer area.
NOTE: Each correct selection is worth one point.

Answer area

Requirement	Feature
Create point-in-time snapshots of the dataset at specific intervals.	<div><div></div><div>Redis cluster Redis persistence Azure Virtual Network</div></div>
Limit specific clients from using the cache.	<div><div></div><div>Redis cluster Redis persistence Azure Virtual Network</div></div>
Use primary/replica cache pairs.	<div><div></div><div>Redis cluster Redis persistence Azure Virtual Network</div></div>

Answer:
Explanation: Answer area

Requirement	Feature
Create point-in-time snapshots of the dataset at specific intervals.	<div><div></div><div>Redis cluster Redis persistence Azure Virtual Network</div></div>
Limit specific clients from using the cache.	<div><div></div><div>Redis cluster Redis persistence Azure Virtual Network</div></div>
Use primary/replica cache pairs.	<div><div></div><div>Redis cluster Redis persistence Azure Virtual Network</div></div>

NEW QUESTION 319
DRAG DROP
Contoso has an Azure DocumentDB database that contains contact information for customers. You have a collection named Companies. The collection includes the following data:

```
{
  "id" : "ContosoCompany",
  "name" : "Contoso",
  "contacts" : [
    {
      "giveName" : "Lola",
      "surName" : "Jacobsen",
      "regions" : [
        { "regionName" : "West" },
        { "regionName" : "South" }
      ]
    },
    {
      "giveName" : "David",
      "surName" : "Jones",
      "regions" : [
        { "regionName" : "North" },
        { "regionName" : "South" }
      ]
    }
  ],
  "address" : { "state" : "co", "city" : "Denver" }
}
```

You plan to collect the following information for contacts that are located in the South region only:

- ? Company name
- ? Given name
- ? Surname

You need to create the query.

Which three Transact-SQL segments should you use to develop the solution? To answer, move the appropriate Transact-SQL segments from the list of Transact-SQL segments to the answer area and arrange them in the correct order.

Transact-SQL segments		Answer area
FROM Contoso c		
SELECT Name, givenName, surName		
SELECT contoso.Name, c.contacts.givenName, c.contacts.surName	>	^
WHERE regionName = 'South'	<	v
WHERE c.contacts.regions.regionName = 'South'		
FROM Companies c		
SELECT c.Name, c.contacts.givenName, c.contacts.surName		

Answer:

Explanation:

Transact-SQL segments

FROM Contoso c

SELECT Name, givenName, surName

SELECT contoso.Name, c.contacts.givenName, c.contacts.surName

WHERE regionName = 'South'

WHERE c.contacts.regions.regionName = 'South'

FROM Companies c

SELECT c.Name, c.contacts.givenName, c.contacts.surName

Answer area

SELECT Name, givenName, surName

FROM Contoso c

WHERE c.contacts.regions.regionName = 'South'

NEW QUESTION 322

Note: This question is part of a series of questions that present the same scenario. Each question in the series contains a unique solution that might meet the goals. Some question sets might have more than one correct solution, while others might not have a correct solution. After you answer a question in this section, you will NOT be able to return to it. As a result, these questions will not appear in the review screen. You deploy a Virtual Machine Scale Set (VMSS) named CorpWebVMSS to Azure by using Azure PowerShell and set the instance count to 1. The VMSS includes a storage account, load balancer, public IP address. and six Standard_A1 Windows virtual machines (VMs) that run Internet Information Services (IIS). All components are deployed to a resource group named CorpWebRG. You must increase the instance count to support the increased load on IIS. You need to scale out the number of VMs in the scale set to 5. Solution: You deploy the following JSON template by using Azure PowerShell:

```
{
  "$schema": "http://schema.management.azure.com/schemas/2015-01-01-preview/de-
ploymentTemplate.json",
  "contentVersion": "1.0.0.0",
  "resources": [
    {
      "type": "Microsoft.Compute/virtualMachineScaleSets",
      "apiVersion": "2016-03-30",
      "name": "CorpWebVMSS",
      "location": "[resourceGroup().location]",
      "sku": {
        "name": "Standard_A1",
        "tier": "Standard",
        "capacity": "5"
      }
    }
  ]
}
```

Does the solution meet the goal?

- A. Yes
- B. No

Answer: A

Explanation: References:
<https://docs.microsoft.com/en-us/azure/virtual-machine-scale-sets/virtual-machine-scale-sets-autoscale-overview>

NEW QUESTION 325

Note: This question is part of a series of questions that present the same scenario. Each question in the series contains a unique solution that might meet the stated goals. Some question sets might have more than one correct solution, while others might not have a correct solution. After you answer a question in this section, you will NOT be able to return to it. As a result, these questions will not appear in the review screen. You deploy a Virtual Machine Scale Set (VMSS) named CorpWebVMSS to Azure by using Azure PowerShell and set the instance count to 1. The VMSS includes a storage account, load balancer, public IP address. and six Standard_A1 Windows virtual machines (VMs) that run Internet Information Services (IIS). All components are deployed to a resource group named CorpWebRG. You must increase the instance count to support the increased load on IIS. You need to manually scale out the of VMs in the scale set to 5. Solution: You run the following command by using the Azure Command-Line Interface (CLI): azure vmss scale -g CorpWebRG -n CorpWebVMSS -c 5 Does the solution meet the goal?

- A. Yes
- B. No

Answer: A

NEW QUESTION 328
HOTSPOT

You are developing a multitenant application that uses Azure Search services. You have the following tenants:

Tenant	Requirement
TenantA	The workload and data for this tenant must be isolated from other tenants.
TenantB	The data for this tenant must be isolated from other tenants, but TenantB can share its workload with other tenants.

You must minimize costs associated with implementing any solution. The cost model must be predictable.
You need to design the search experience for the application.
Which Azure Search pattern should you use for each tenant? To answer, select the appropriate options in the answer area.
NOTE: Each correct selection is worth one point.

Answer area

Tenant	Pattern
TenantA	<div><div></div><div><div>index-per-tenant</div><div>service per tenant</div><div>mixed model</div></div></div>
TenantB	<div><div></div><div><div>index-per-tenant</div><div>service per tenant</div><div>mixed model</div></div></div>

Answer:

Explanation:

Answer area

Tenant	Pattern
TenantA	<div><div></div><div><div>index-per-tenant</div><div>service per tenant</div><div>mixed model</div></div></div>
TenantB	<div><div></div><div><div>index-per-tenant</div><div>service per tenant</div><div>mixed model</div></div></div>

NEW QUESTION 332
DRAG DROP

You to add code to CommentController.cs to enable moderation of comments.
How should you complete the code? To answer, drag the appropriate code segments to the correct locations. Each code segment may be used once, more than once, or not at all. You may need to drag the split bar between panes or scroll to view content.
NOTE: Each correct selection is worth point.

Code segments

Authorize

AllowAnonymous

AutoValidateAntiforgeryToken

Headers ["X-MS-CLIENT-PRINCIPAL-NAME"] .First()

Headers ["Proxy-Authorization"] .First()

Headers ["X-Forwarded-For"] .First()

Answer area

[HttpPost]

[Code segment]

public async Task<IActionResult> Moderate([FromBody] Comment comment)

{

var moderatorName = Request.

[Code segment]

await Save(comment, moderatorName);

return Ok();

}

Answer:

Explanation:

Code segments

Authorize

AllowAnonymous

AutoValidateAntiforgeryToken

Headers ["X-MS-CLIENT-PRINCIPAL-NAME"] .First()

Headers ["Proxy-Authorization"] .First()

Headers ["X-Forwarded-For"] .First()

Answer area

[HttpPost]

[Authorize]

public async Task<IActionResult> Moderate([FromBody] Comment comment)

{

var moderatorName = Request.

Headers ["X-MS-CLIENT-PRINCIPAL-NAME"] .First()

await Save(comment, moderatorName);

return Ok();

}

NEW QUESTION 337

DRAG DROP

You need to add code at line CC63 to ensure that the Interaction Agent is invoked.
How should you complete the code? To answer, drag the appropriate code segments to the correct locations. Each code segment may be used once, more than once, or not at all. You may need to drag the split bar between panes or scroll to view content.
NOTE: Each correct selection is worth point.

Code fragments

ActorId.CreateRandom()

new ActorId(comment.UserId)

new ActorId(comment.Id)

ActorProxy

ServiceProxy

ActorServiceProxy

Answer area

var actorId = [Code fragment] ;

var actor = [Code fragment]

.Create<ICommentAgent>(actorId, "...");

await actor.ModifyCommentText(comment.Id, commetn.Body,

commeny.Title);

Answer:

Explanation:

Code fragments

ActorId.CreateRandom()

new ActorId(comment.UserId)

new ActorId(comment.Id)

ActorProxy

ServiceProxy

ActorServiceProxy

Answer area

```

var actorId = ActorId.CreateRandom();

var actor = ActorProxy
    .Create<ICommentAgent>(actorId, "...");

await actor.ModifyCommentText(comment.Id, comment.Body,
    comment.Title);
        
```

NEW QUESTION 342

You are migrating an existing solution to Azure. The solution includes a user interface tier and a database tier. The user interface tier runs on multiple virtual machines (VMs). The user interface tier has a website that uses Node.js. The user interface tier has a background process that uses Python. This background process runs as a scheduled job. The user interface tier is updated frequently. The database tier uses a self-hosted MySQL database. The user interface tier requires up to 25 CPU cores. You must be able to revert the user interface tier to a previous version if updates to the website cause technical problems. The database requires up to 50 GB of memory. The database must run in a single VM. You need to deploy the solution to Azure. What should you do first?

- A. Deploy the entire solution to an Azure Web App
- B. Use a web job that runs continuously to host the database.
- C. Configure Microsoft Visual Team Services to continuously deploy the user interface tier to the Azure Web App service
- D. Deploy the production builds and the staging builds of the user interface tier to separate slots.
- E. Deploy the entire solution to an Azure Web App
- F. Use a web job that runs continuously to host the user interface tier.
- G. Deploy the user interface tier to a VM
- H. Use multiple availability sets to continuously deploy updates from Microsoft Visual Studio Online.

Answer: B

NEW QUESTION 347

Note: This question is part of a series of questions that present the same scenario. Each question in the series contains a unique solution that might meet the stated goals. Some question sets might have more than one correct solution, while others might not have a correct solution.

After you answer a question in this section, you will NOT be able to return to it. As a result, these questions will not appear in the review screen.

You are developing an application that will run as an Azure API App. The application tracks flights between airports, including duration of flight, if the flight was on time, the capacity of the airplane, and the number of seats sold. Queries can be performed to show multiple routes, multi-leg journeys, and filtering based on the attributes of the flight.

Flight information will be used by customers to perform data mining, drive interactive display, perform airspace tracking, and other applications.

Customers require that the response time of the API be as low as possible, both for retrieving information for a single flight, and for queries across flights. To achieve the required level of performance, each API invocation must be satisfied by a single operation against the data store containing flight information.

You need to implement the data store for this application. Solution: You use Azure Search.

Does the solution meet the goal?

- A. Yes
- B. No

Answer: B

NEW QUESTION 348

Note: This question is part of a series of questions that present the same scenario. Each question in the series contains a unique solution that might meet the stated goals. Some question sets might have more than one correct solution, while others might not have a correct solution.

After you answer a question in this section, you will NOT be able to return to it. As a result, these questions will not appear in the review screen.

You are a system administrator at your company. Your company recently acquired two of its competitors, as well as their IT infrastructure. The acquired companies have applications that are written in Java, .NET, Ruby, php, Node.js, and other languages. The applications run on Linux and Windows Server in Amazon Web Services, Azure, and SAP Cloud Platform.

The applications require access to the Azure Service Broker, and must be managed by the PCF Ops Manager.

You need to consolidate the applications onto a single cloud provider in Azure.

Solution: Use the Azure Cloud Shell to install the Cloud Foundry CLI and connect to the Cloud Controller.

Does the solution meet the goal?

- A. Yes
- B. No

Answer: B

NEW QUESTION 350

Note: This question is part of a series of questions that present the same scenario. Each question in the series contains a unique solution that might meet the stated goals. Some question sets might have more than one correct solution, while others might not have a correct solution.

After you answer a question in this section, you will NOT be able to return to it. As a result, these questions will not appear in the review screen.

You are a developer for Consolidated Messenger, a software company that provides applications for manager courier services. You are preparing to release a new version of the flagship application.

The application is comprised of a set of Windows and Linux virtual machines (VMs), and a set of Linux-based Docker containers. The management portion of the application uses Kubernetes for management of containers.

You need to determine a mechanism to deploy the application so that customers can provision the application from the Azure Marketplace.

Solution: Build a custom Azure Resource Manager QuickStart template. Does the solution meet the goal?

- A. Yes
- B. No

Answer: B

NEW QUESTION 352

You are developing an Azure Logic App that summarizes and translates Microsoft Word documents. Clients upload Word documents to an Azure File share, and all documents are processed once per day.

Each document more than 10 minutes to process, and each client processes thousands of documents per day.

You need to ensure that customers can process documents on demand while minimizing costs.

Which two types of Logic App triggers can you use? Each correct answer presents a complete solution.

NOTE: Each correct selection is worth one point.

- A. HTTP
- B. Request
- C. HTTPWebhook
- D. ApiConnection
- E. ApiConnectionWebhook

Answer: BE

NEW QUESTION 357

You are developing a Windows console application that uses a third-party C++ library. The console application is designed to be run as an Azure WebJob that has authentication and authorization enabled.

You need to ensure that the console application can determine the current user identity. What should you do?

- A. Perform an HTTP request to the /.auth/me endpoint.
- B. Call the System.Security.Principal.WindowsIdentity.GetCurrent() method.
- C. Read the X-MS-CLIENT-PRINCIPAL-NAME header.
- D. Read the identity from the UserName environment variable.

Answer: C

NEW QUESTION 361

DRAG DROP

You are developing an ASP.NET Web API that runs as an Azure Web App. The App Azure Active Directory (Azure AD) business-to-business (B2B) for authentication and authorization.

The application contains an ASP.NET Web API controller to retrieve test results. The directory contains the Tester Azure AD group as shown below.

Tester

Group

Overview

MANAGE

Properties

Members

Owners

Delete

Essentials

Display name

Tester

Membership type

Assigned

Source

Cloud

Members

1 User(s), 0 Device(s), 0 Group(s), 0 Other(s)

Type

Security

Object ID

c0842332-4cef-49cf-8e62-c137c67a59d3

You need to ensure that the Get controller method is available only to members of the Tester group.

What should you do? To answer, drag the appropriate code segments to the correct locations. Each code segment may be used once, more than once, or not at all. You may need to drag the split bar between panes or scroll to view content.

NOTE: Each correct selection is worth one point.

Code segments



Answer area

```
public string Get()
{
    var groupClaim = .Current.Claims
        .FirstOrDefault(c => c.Type ==  &&
            c.Value ==  );

    if (groupClaim == null)
    {
        throw new HttpResponseException(new HttpResponseMessage
        {
            StatusCode = HttpStatusCode.Unauthorized,
        });
    }
}
```

Answer:

Explanation:

Code segments

ClaimsPrincipal

ClaimsIdentity

"groups"

"memberof"

"c0842332-4cef-49cf-8e62-c137c67a59d3"

"Tester"



Answer area

```
public string Get()
{
    var groupClaim = ClaimsPrincipal.Current.Claims
        .FirstOrDefault(c => c.Type == "groups"
            c.Value == "c0842332-4cef-49cf-8e62-c137c67a59d3" );

    if (groupClaim == null)
    {
        throw new HttpResponseException(new HttpResponseMessage
        {
            StatusCode = HttpStatusCode.Unauthorized,
        });
    }
}
```

NEW QUESTION 364

You are designing a Windows Azure application that will process images. The maximum size of an image is 10 MB. The application includes a web role that allows users to upload images and a worker role with multiple instances that processes the images. The web role communicates with the worker role by using a Windows Azure Queue. You need to recommend an approach for storing images that minimizes storage transactions. What should you recommend?

- A. Store images in the queue.
- B. Store images in Windows Azure Blob storage.
- C. Store references to the images in the queue.
- D. Store images in local storage on the web role instance.
- E. Store references to the images in the queue.
- F. Store images in Windows Azure Drives attached to the worker role instance.
- G. Store references to the images in the queue.

Answer: B

Explanation: You can store text and binary data in either of two types of blobs: Block blobs, which are optimized for streaming. Page blobs, which are optimized for random read/write operations and which provide the ability to write to a range of bytes in a blob.

NEW QUESTION 368

You are designing a Windows Azure application. The application includes a web role and a worker role that communicate by using a Windows Azure Queue. The worker role processes each message within 10 seconds of retrieving it from the queue. The worker role must process each message exactly one time. If a process does not complete, the worker role must reprocess the message. You need to recommend an approach for the worker role to manage messages in the queue. What should you recommend?

- A. Process the message and then delete it from the queue.
- B. Delete the message from the queue when retrieving the message.
- C. Set the visibility timeout of the message to 1 when the message.
- D. Process the message and then set the visibility timeout of the message to the maximum value.

Answer: A

NEW QUESTION 371

.....

Thank You for Trying Our Product

We offer two products:

1st - We have Practice Tests Software with Actual Exam Questions

2nd - Questions and Answers in PDF Format

70-532 Practice Exam Features:

- * 70-532 Questions and Answers Updated Frequently
- * 70-532 Practice Questions Verified by Expert Senior Certified Staff
- * 70-532 Most Realistic Questions that Guarantee you a Pass on Your First Try
- * 70-532 Practice Test Questions in Multiple Choice Formats and Updates for 1 Year

100% Actual & Verified — Instant Download, Please Click
[Order The 70-532 Practice Test Here](#)